



## *TC Status and Plans*

Jérôme Fulachier, Fabian Lambert

# Plan

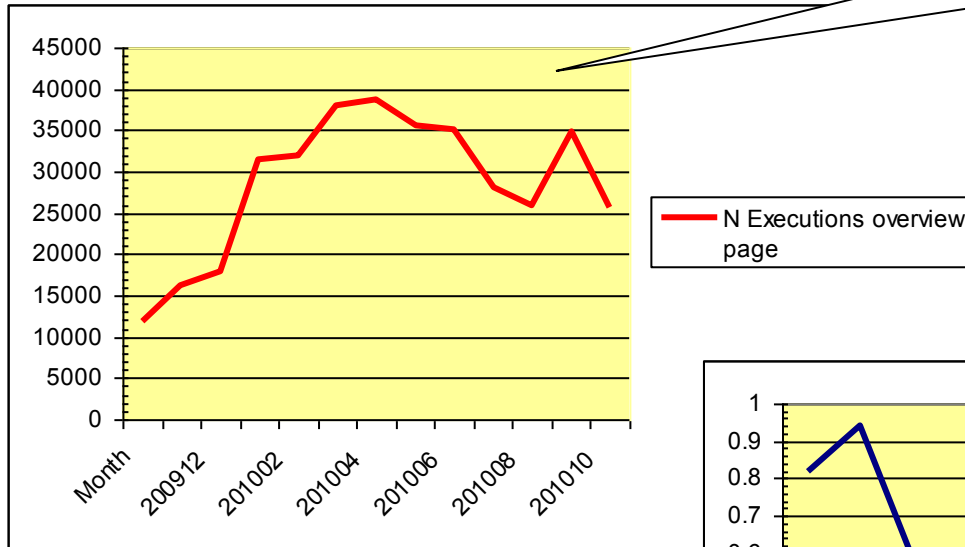
- ⊕ Performances optimisation
- ⊕ Security issue
- ⊕ Production instance migration
- ⊕ AMI/TC RTT Tests
- ⊕ New graphs implemetation
- ⊕ Current Investigations
- ⊕ PyAMI : Client Wrapper for TC
- ⊕ Plans

## *Performances optimisation*

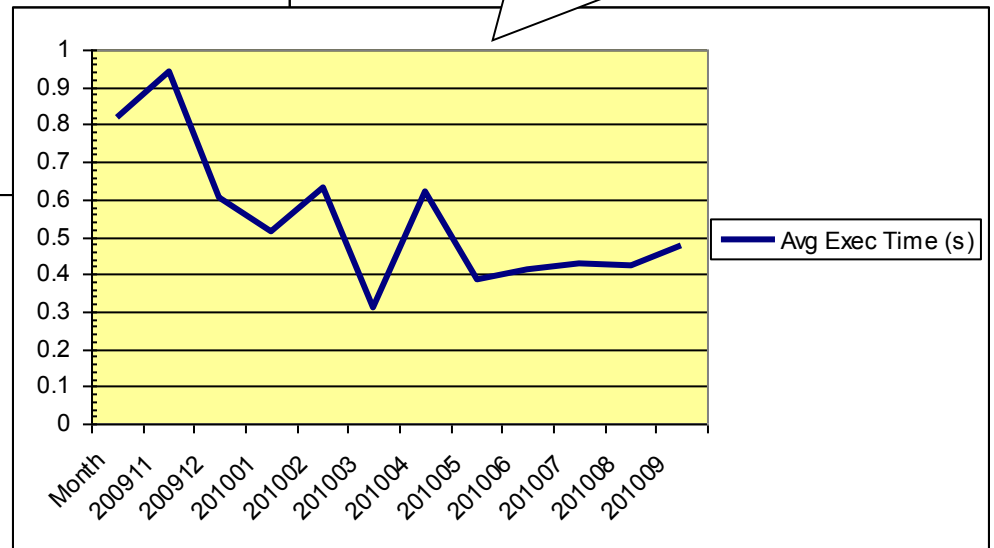
- **XSLT Pooling**
  - We continue to make improvements in the response time of AMI
  - All response time were reduce by  $\sim 0,5$  s by caching XSLT
  - Page generation time (server side)  $< 1$ s for most of TC commands
  - See AMITCEasyView stats next slides

# Response time for AMITCEasyView

Number of Executions



Average Time in seconds



## *Security issue*

- CERN IT tested AMI replica security with Skipfish tool
- Found some low risk issues
- We fixed all concerns
- Now we use the tool regularly now to check TC/AMI

## *TC/AMI migration*

- **Plans for production instance**
  - AMI Tomcat Nodes
    - 2 tomcat nodes behind an apache front end on « old » Pcs
    - We plan to migrate tomcat from SLC4 to SLC5
    - Install new nodes using an AMI RPM
  - TC database
    - We plan to migrate TC database on Lyon mySQL5 cluster

## *TC/AMI RTT Test*

Present in the new pyAMI package version

Thanks to B.Simons who helped us to put it in place

## *New graphs implementation*

We still use graphviz for our graphs

But webdot usage had been replace by our own library

We dont need anymore an apache server coupled with our tomcat nodes

## *Investigating...*

- **SVN problem**
  - When CERN SVN go down, TC stay in a strange state
  - Maybe a SSL socket problem with the SVN Kit library
  - We are currently testing this with our LPSC test instance
- **TC very slow with my browser...**
  - One single user reported problem with recent version of Firefox on SLC5 when displaying TC dev home page
  - Xorg process goes to 95 % CPU, laptop totally frozen
  - For now we cannot reproduce but please report any similar problem



# Plans

- **Authentication: information protection**
  - CERN SSO hard to put in place
    - For web services
    - Support of voms
  - VOMS seems to be the best solution
    - Need all AMI/TC user to have a grid certificate with voms role (ATLAS)
    - Can we ask all developers to have this kind of certificate?
- **SVN**
  - What about this new interface to manage SVN rights
  - We will use it if possible to allow/unallow package manager
- **Documentation**
  - Need help to fill twiki page we have put in place