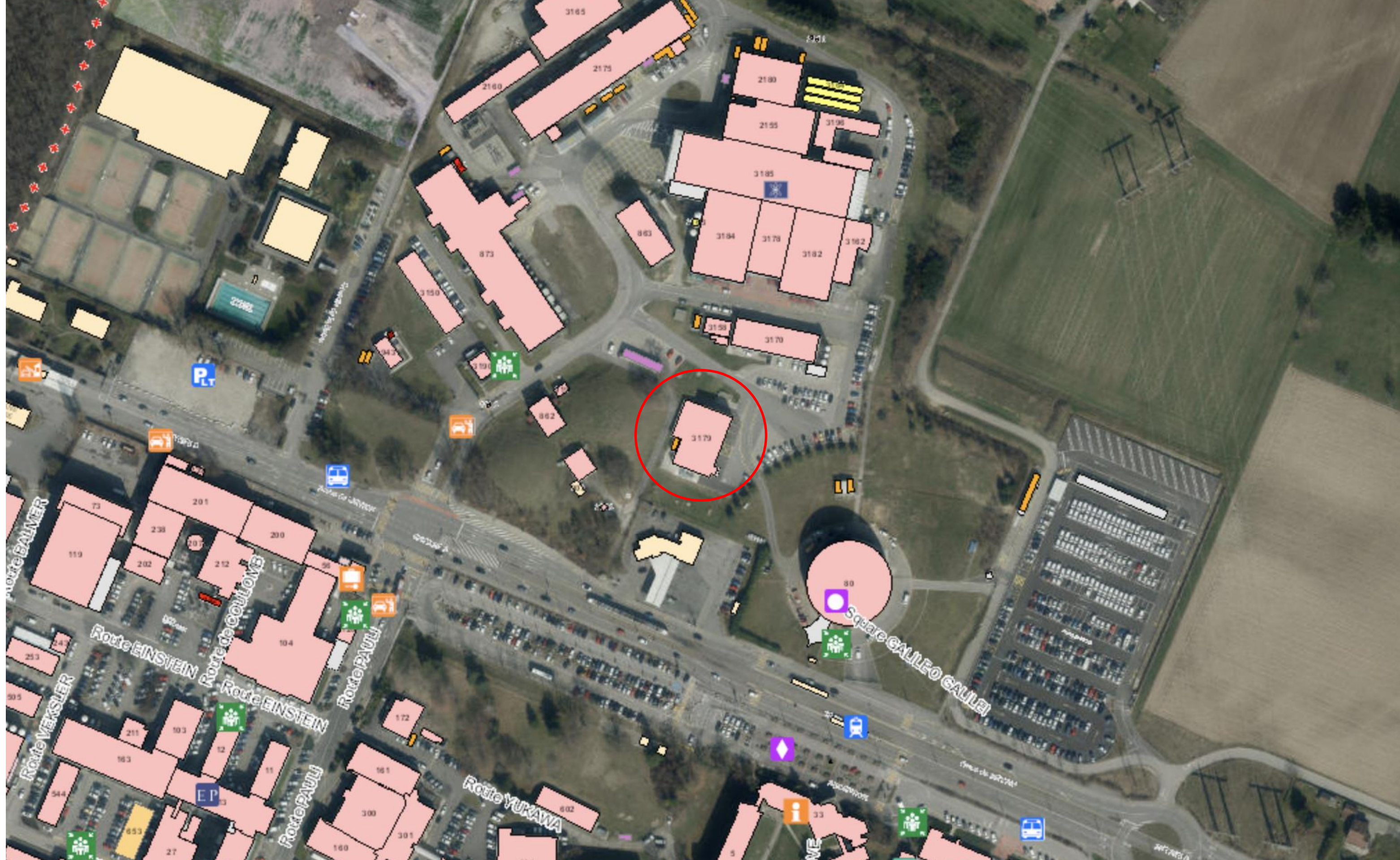


Using Ideasquare spaces for Workshops and Hackathons: Safety



An aerial photograph of a construction site is overlaid with a semi-transparent orange rectangle. Inside the orange area, a technical drawing or site plan is visible, showing various rectangular plots and lines. The text "Safety is first priority." is centered in white, bold font. In the top right corner of the orange area, there is a small black arrow pointing upwards. In the bottom left corner of the orange area, the number "6179" is visible. The background shows a mix of green grass and grey concrete or asphalt.

Safety is first priority.



BUILDING SAFETY B3179

- In all inside areas of Building 3179 smoking is strictly forbidden.
- In Point1 areas (nearby Ideasquare) alcoholic beverages are strictly forbidden.
- Working is possible 24/7 with CERN access card, sleeping is prohibited in all CERN buildings.
- Eating, drinking, coffee breaks are encouraged in the kitchen area.
- Cameras, photos, posting in social media are highly encouraged :)

EVACUATION

 A l'audition du signal
When the alarm rings

 Fermez portes et fenêtres
Close doors and windows

 Suivez le balisage
Follow the signs

 N'utilisez pas l'ascenseur
Do not use the lift

 Se rendre au point de rassemblement
Report to the assembly point




CONSIGNE d'URGENCE / EMERGENCY PROCEDURE


BATIMENT 3179- Etage R / BUILDING 3179 - Floor R





Emergency assembly point is located next to the Point1 access gate.



 Extincteur / Fire Extinguisher

 Alarme d'évacuation
Evacuation alarm

 Voie d'évacuation / Escape route

 Sortie de secours
Emergency exit

INCENDIE/FIRE

 112 ou 7 44 44

 Donnez l'alarme
Set off the alarm

 Prévenez les autres personnes
Inform others

 Fermez portes et fenêtres
Close doors and windows

 N'utilisez pas l'ascenseur
Do not use the lift

 Combattez le feu
Start fighting the fire

In case of an emergency

- If needed, press Fire Alarm (see map on next slide)
- If electric danger present, press Emergency Stop switch - located in each workshop area right next to the door
- Contact Fire Brigade, tel. 74444
- Go to the assembly point next to the Point 1 car gate, stay there until Fire Brigade gives you permission to leave.
- Notify immediately:
 - TSO Johann Poirot, johann.poirot@cern.ch, tel. 168883
 - Markus Nordberg, markus.nordberg@cern.ch, tel. 164452

EVACUATION

- A l'audition du signal
When the alarm rings
- Fermez portes et fenêtres
Close doors and windows
- Suivez le balisage
Follow the signs
- N'utilisez pas l'ascenseur
Do not use the lift
- Se rendre au point de rassemblement
Report to the assembly point



CONSIGNE d'URGENCE / EMERGENCY PROCEDURE

BATIMENT 3179- Etage R / BUILDING 3179 - Floor R



INCENDIE/FIRE

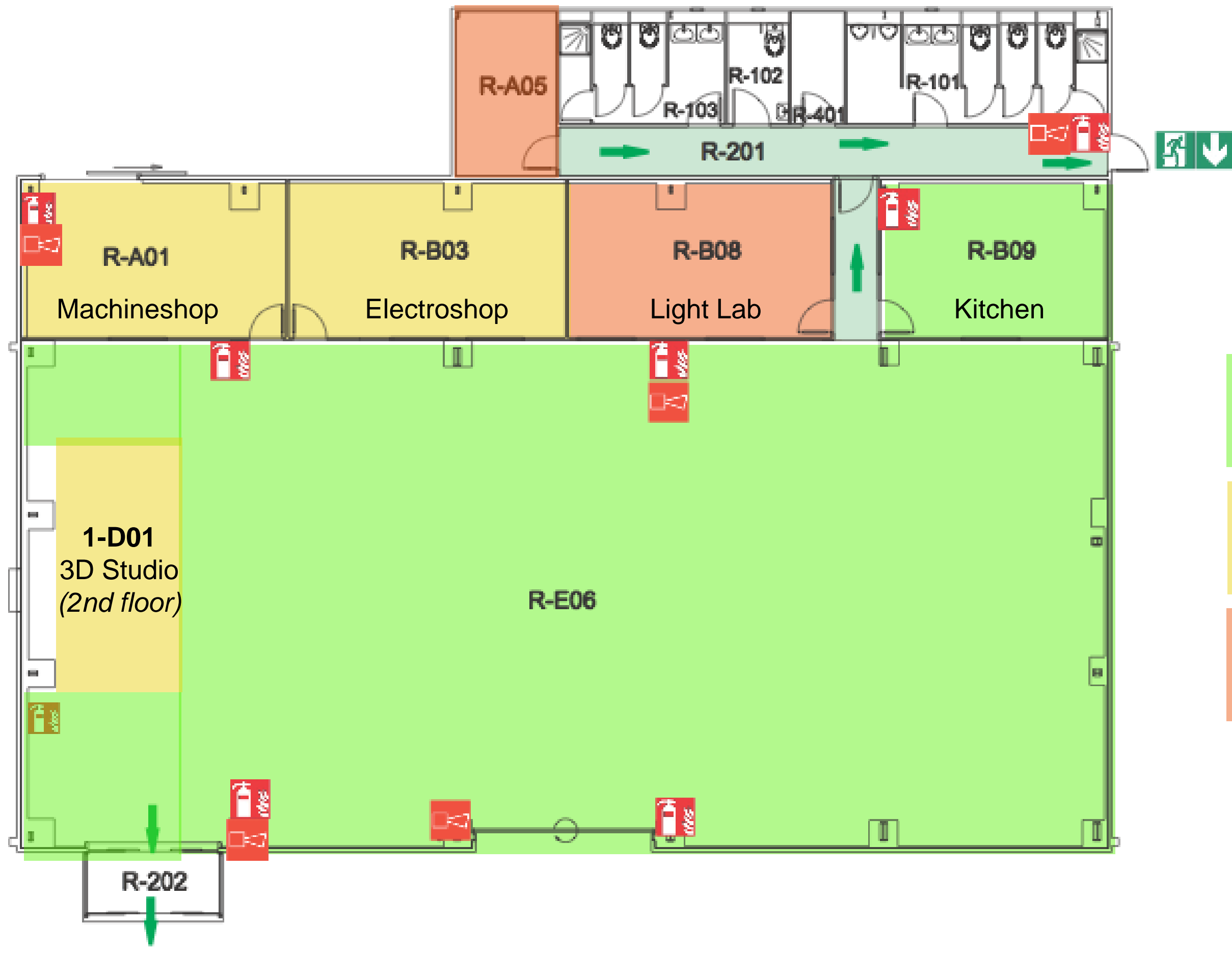
- 112 ou 7 44 44
- Donnez l'alarme
Set off the alarm
- Prévenez les autres personnes
Inform others
- Fermez portes et fenêtres
Close doors and windows
- N'utilisez pas l'ascenseur
Do not use the lift
- Combattez le feu
Start fighting the fire

- Extincteur / Fire Extinguisher
- Alarme d'évacuation
Evacuation alarm
- Voie d'évacuation / Escape route
- Sortie de secours
Emergency exit

Phone First aid & eye wash

WORKING AREAS in B3179

- **Safety is first priority!**
- **In laboratory areas:**
 - **Machinshop 3179-R-A01**
 - **Electroshop 3179-R-B03 and**
 - **3D Studio 3179-1-D01**
- **eating and drinking are strictly forbidden.**
- **For grey room (Light Lab 3179-R-B08) and dark room (3179-R-A06) areas access is restricted to authorised personnel only.**



Free to use

Work under supervision

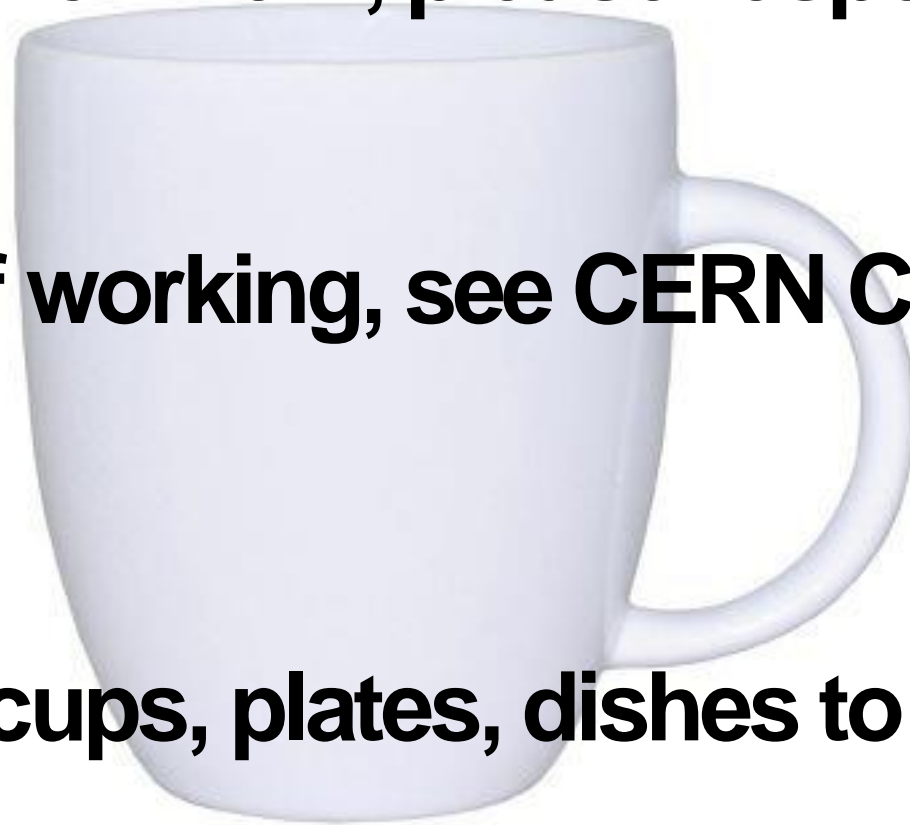
Restricted area

WORKSHOP SAFETY B3179

- Safety is first priority!
- in Machinshop 3179-R-A01, Electroshop 3179-R-B03, 3D Studio 3179-1-D01 working is conducted “under supervision”.
 - i.e. When you want to use the workshops:
 - Come talk to Ramon & Harri what would you like to do and we’ll figure it out together what is the easiest and fastest way to do it safely.

Keeping places tidy

- **This is a work environment, please respect our common workspace.**
- **For CERN ways of working, see CERN Code of Conduct.**
- **Please, please:**
 - **Bring all coffee cups, plates, dishes to kitchen, put them in the machine.**
 - **Help collaboratively to clean up the space at the end of the day.**



All you need is

..Love + PHYSICS

..Design

..Business

..and Engineering.

Take good care of each other,
Ideasquare premises & tools,
and your ideas. Remember to have fun!

Contact info:

+41 75 411 6533

harri.toivonen@cern.ch



Idea^s