



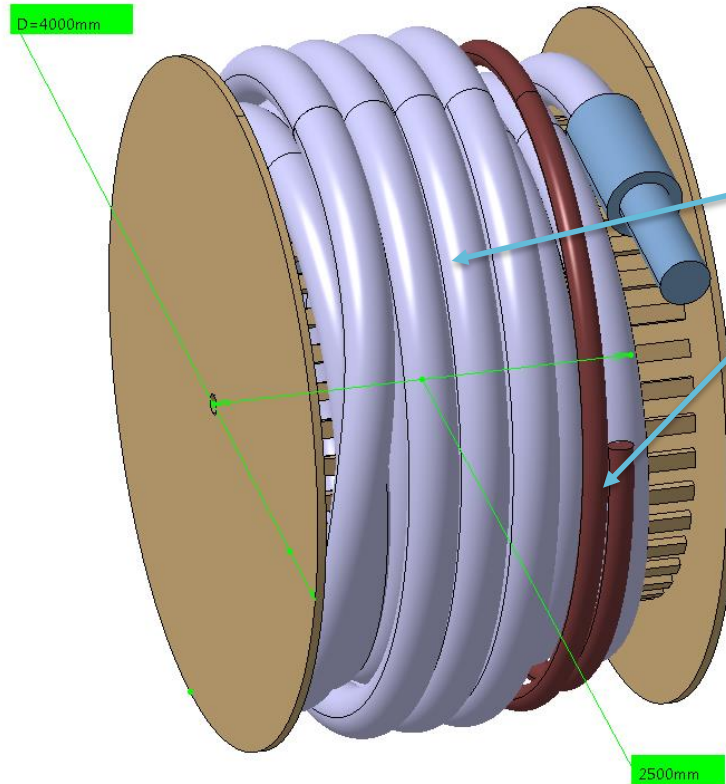
Installation of the SC-Link cryostat at P1

Pre-study for handling and routing

P. Schneider, A. Gharib, Y. Leclercq, R. Betemps

20/11/2018

Real dimensions



DSHx:

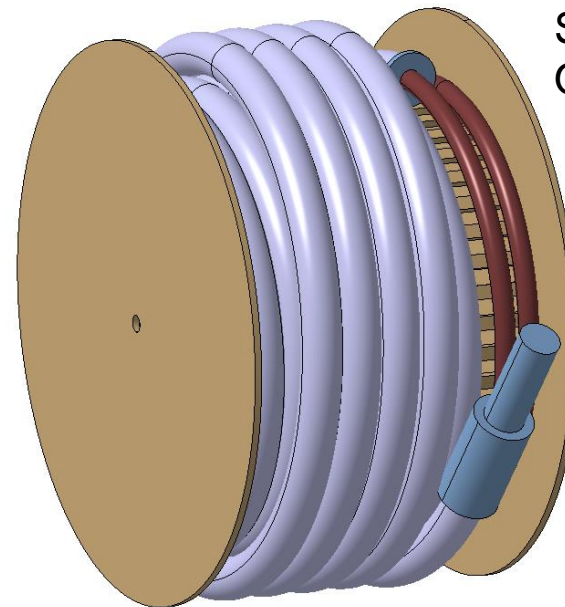
Diameter: 4 m

Width: 2.5 m

Minimum cryostat radius: 1.55 m

Length of cryostat: 110 m

+ 15 m cable

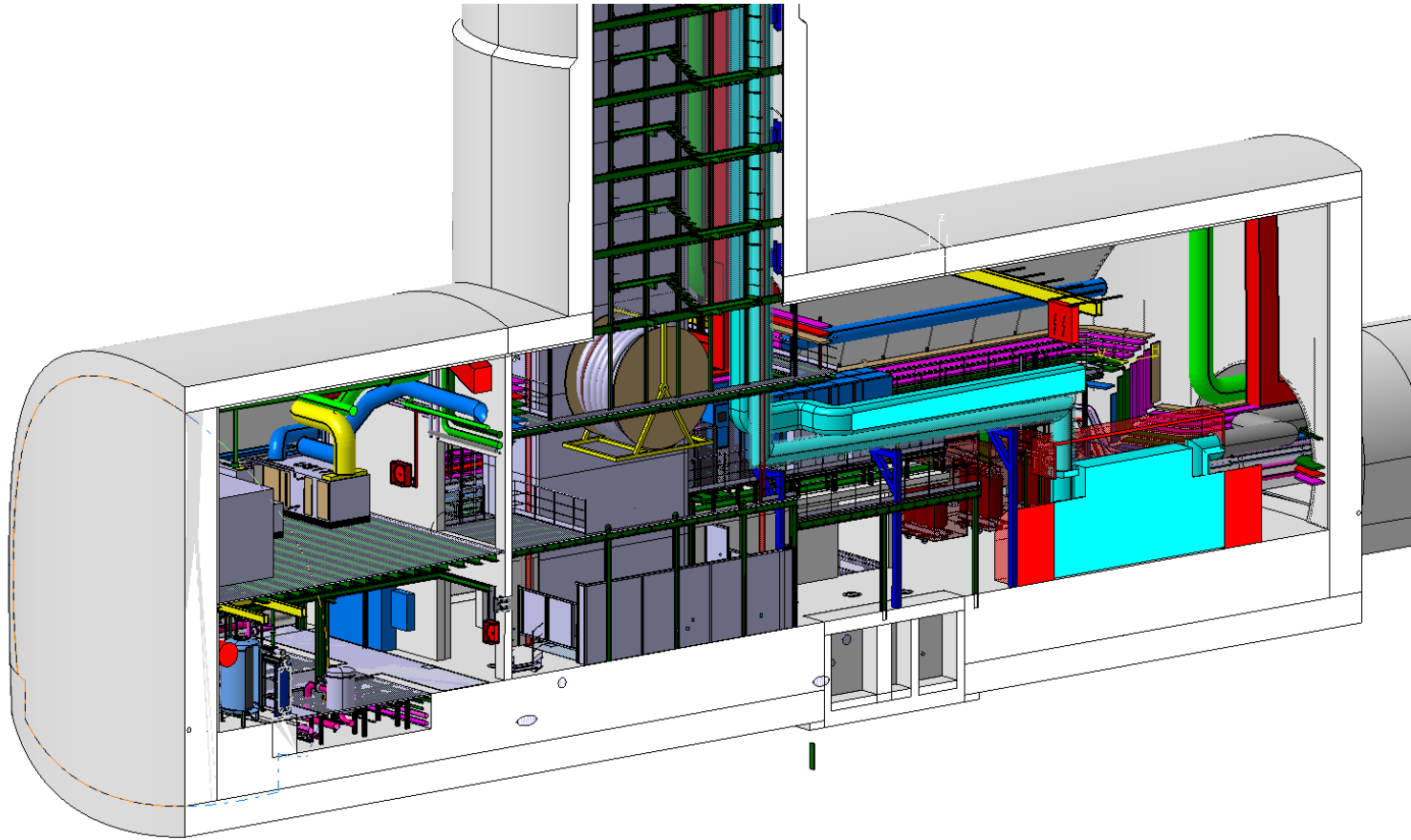


DSHx:

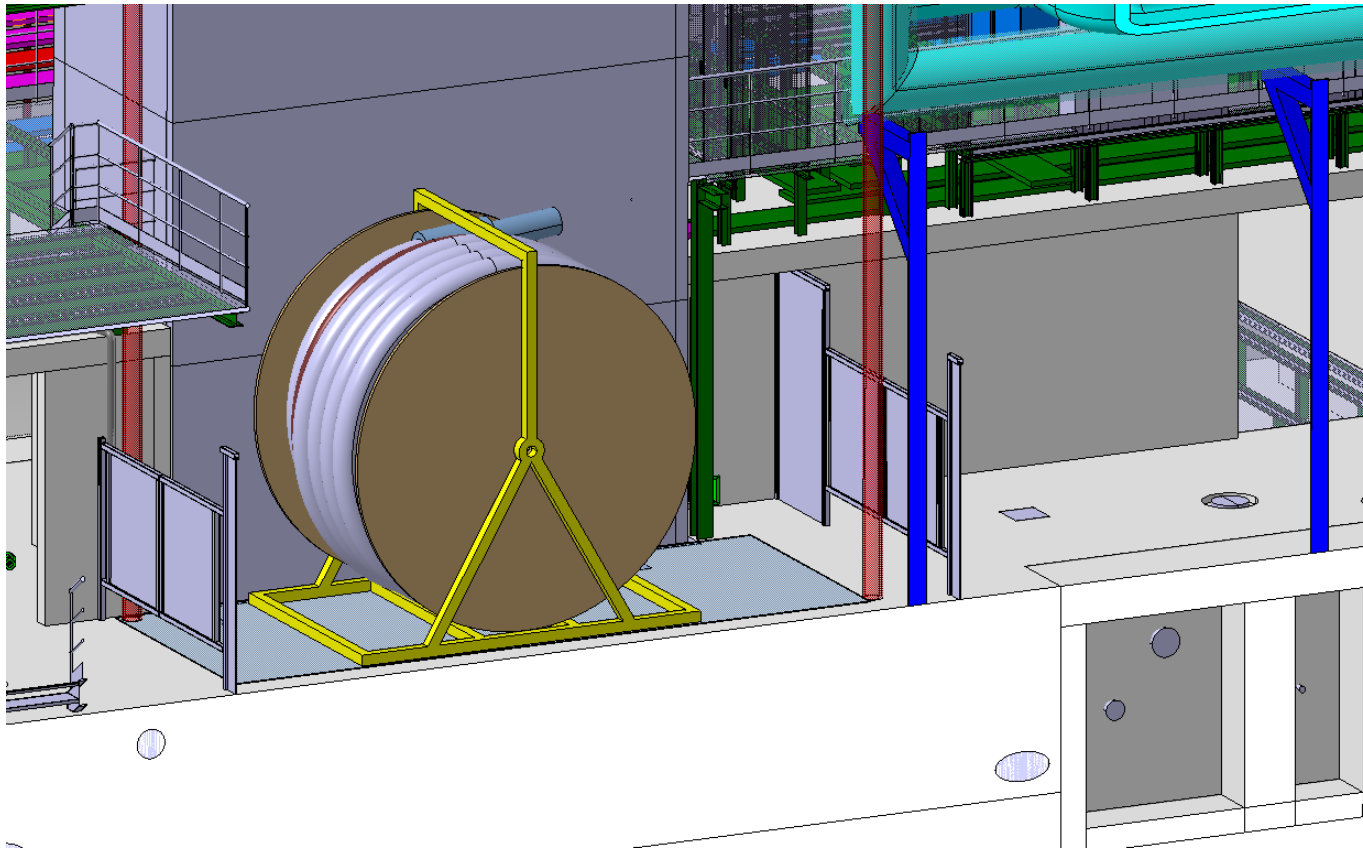
Same dimensions

Opposite winding

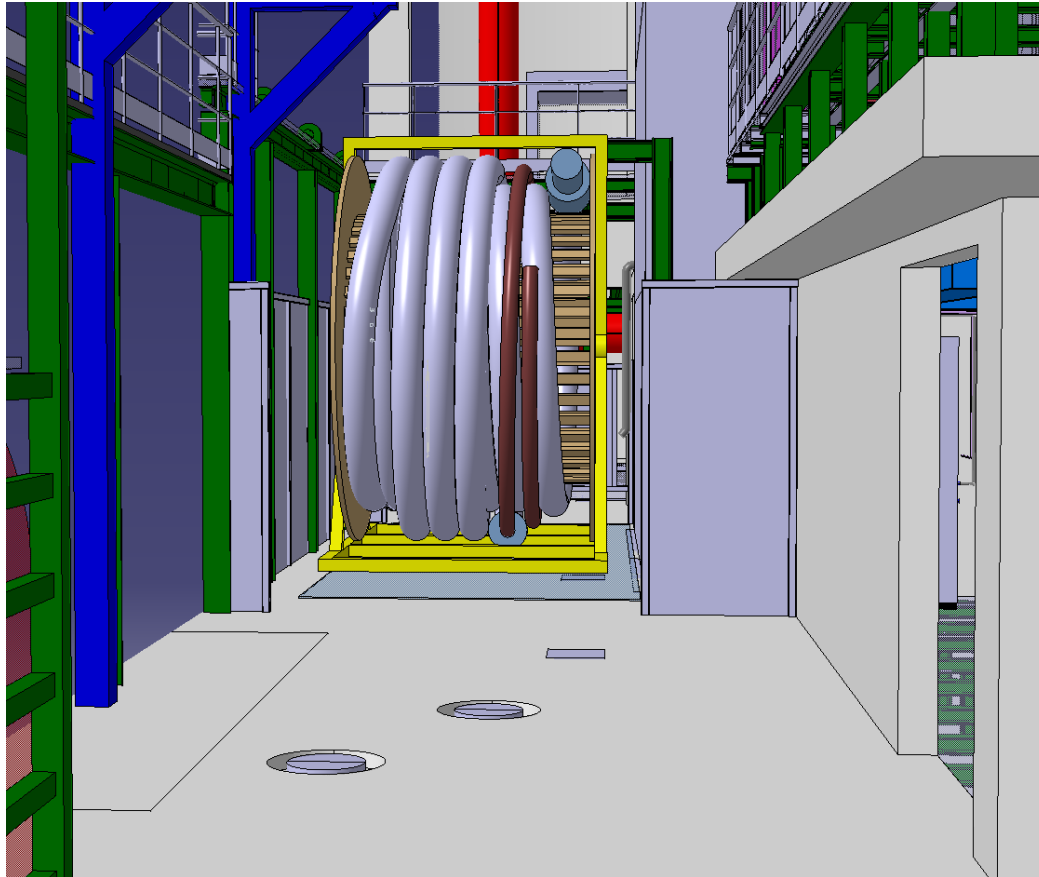
- Down to US17 cavern (with support)



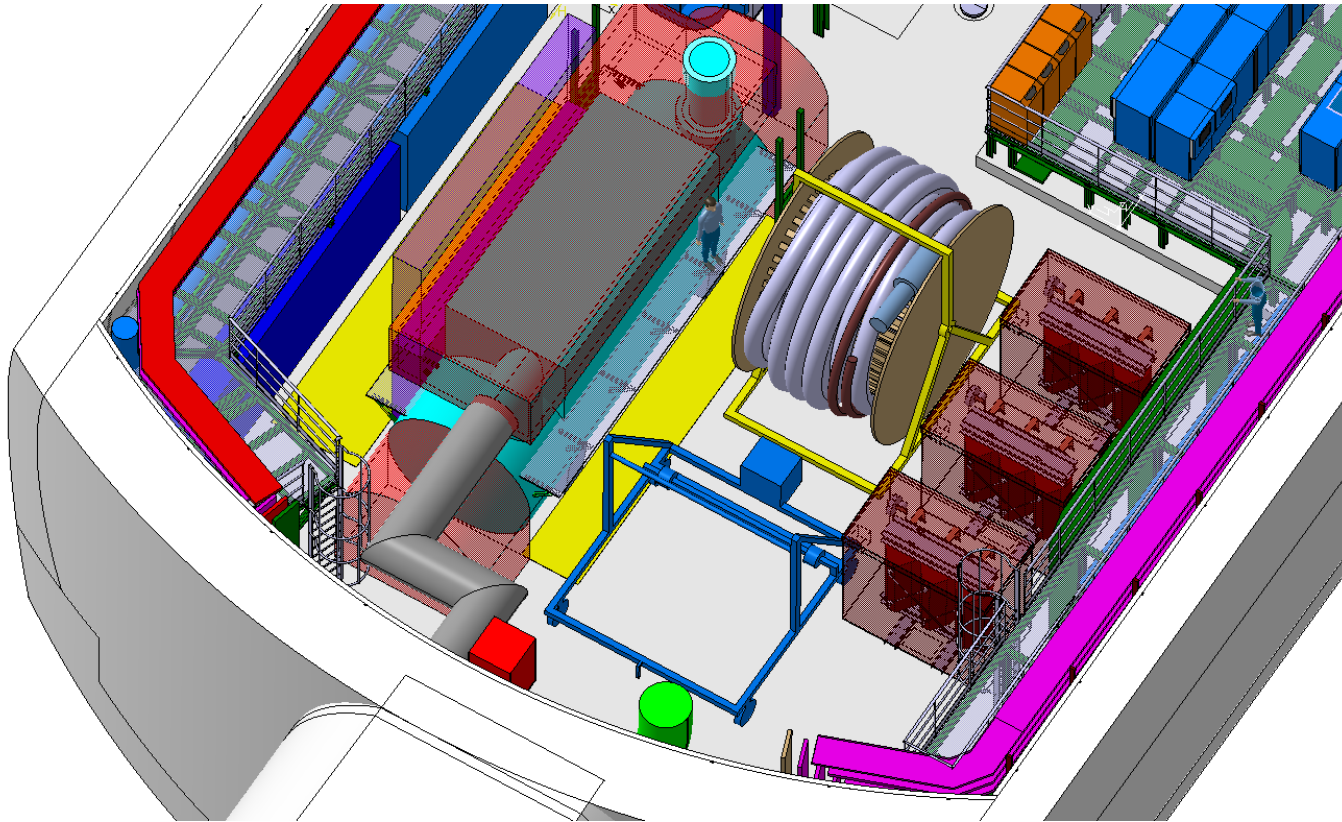
- Down to US17 cavern



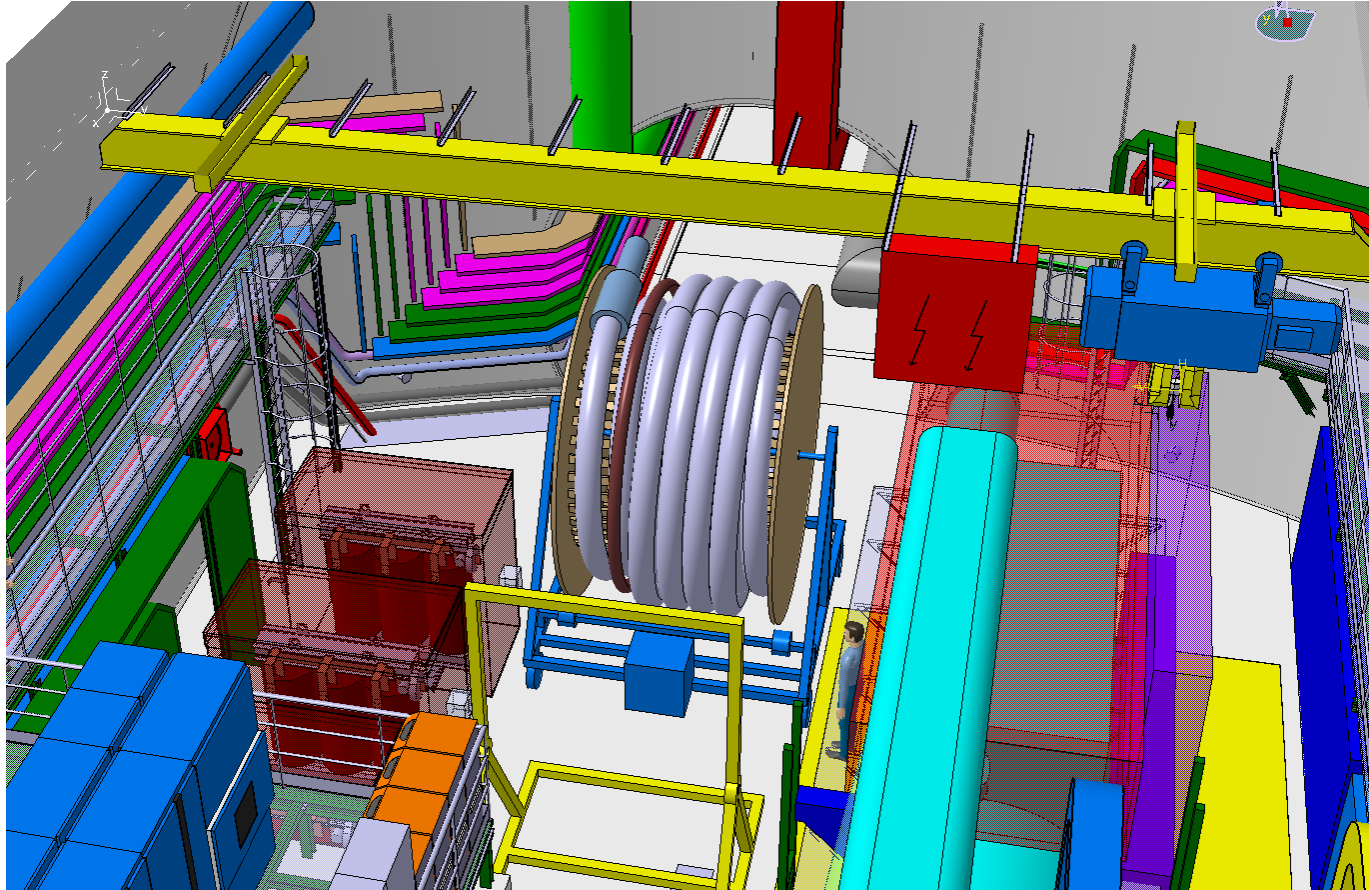
- Arrival in US17 cavern



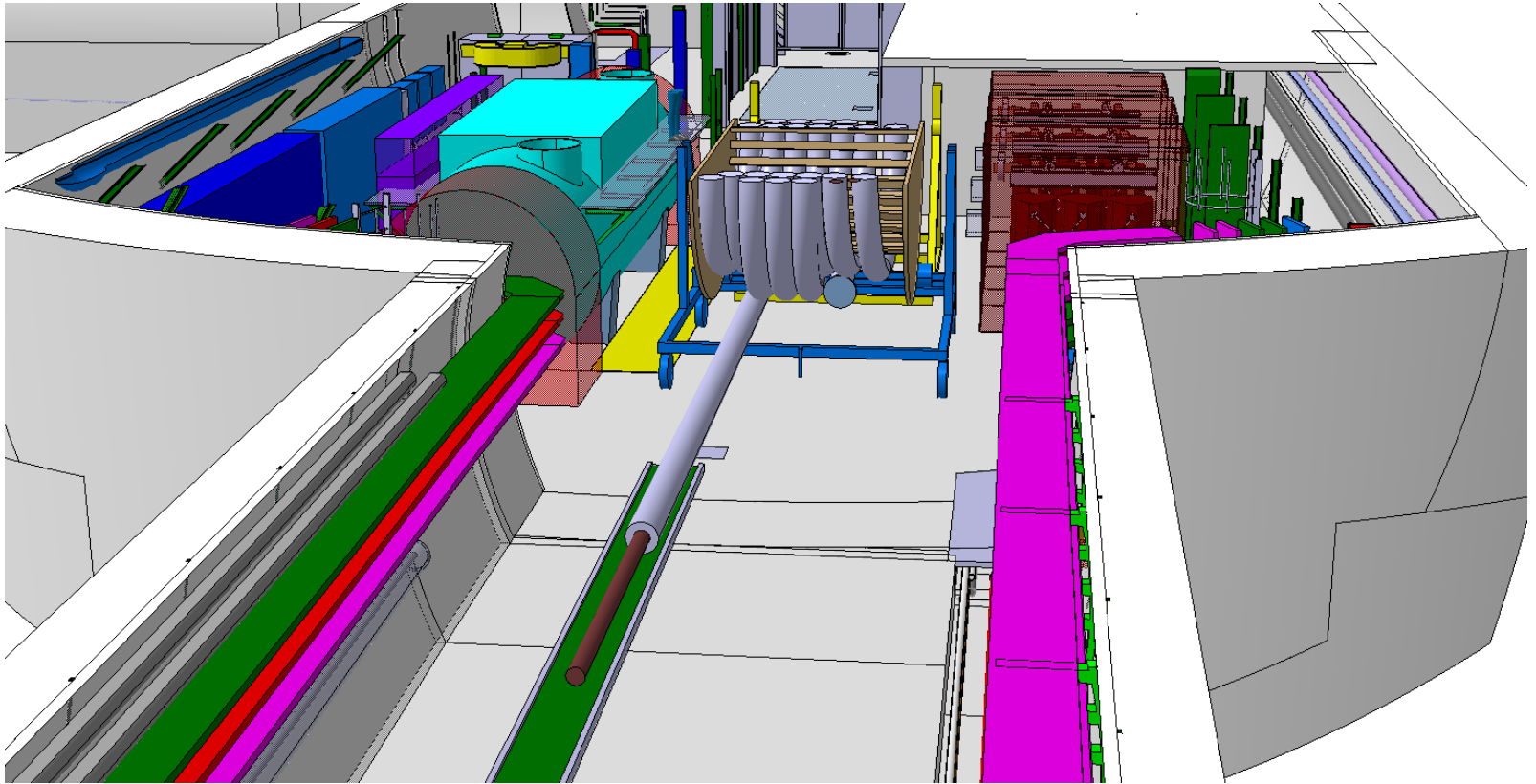
- Move to unroller



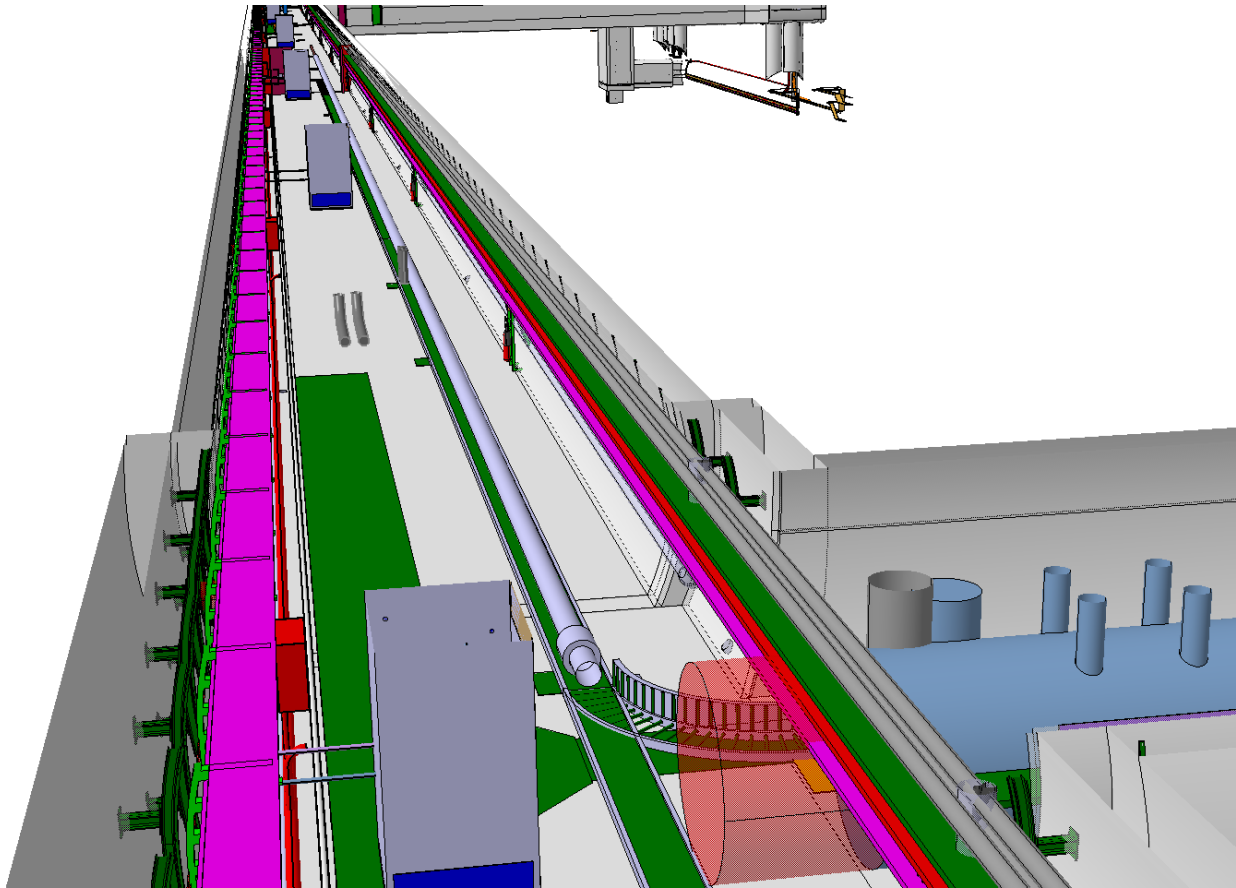
- Installation unroller (5 t crane)



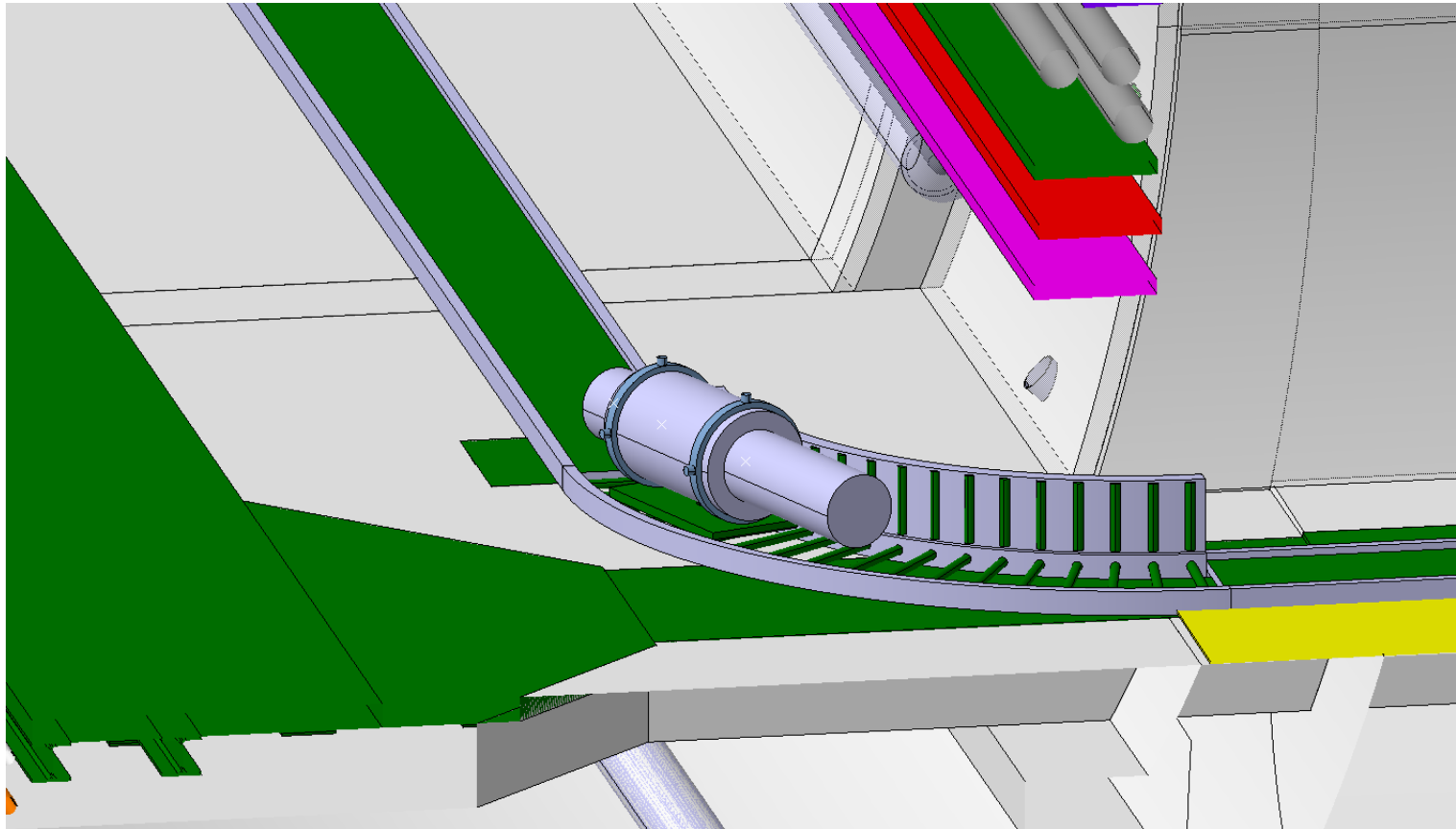
- Unwinding on roller conveyor



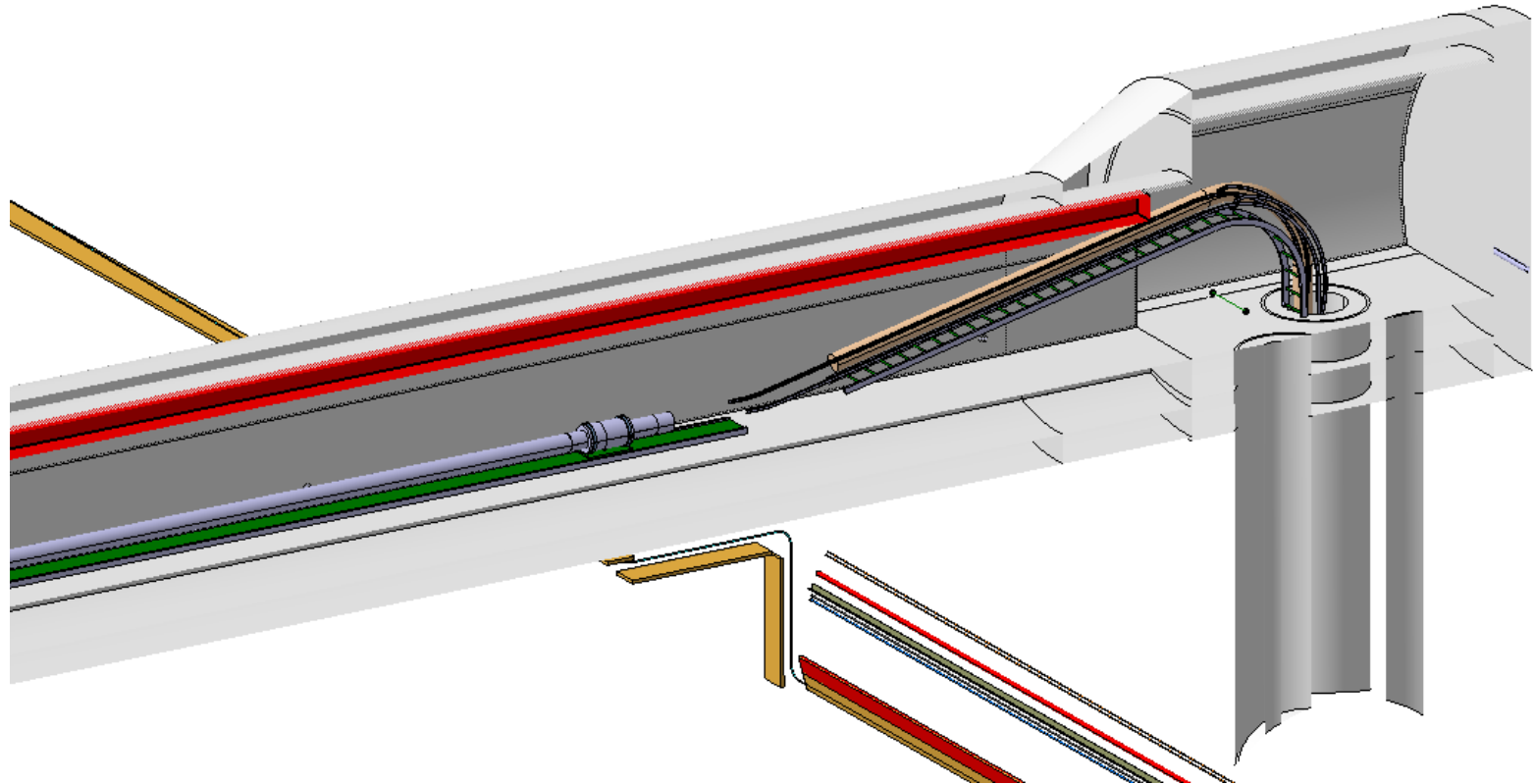
- Unwinding on roller conveyor (≈ 150 m)



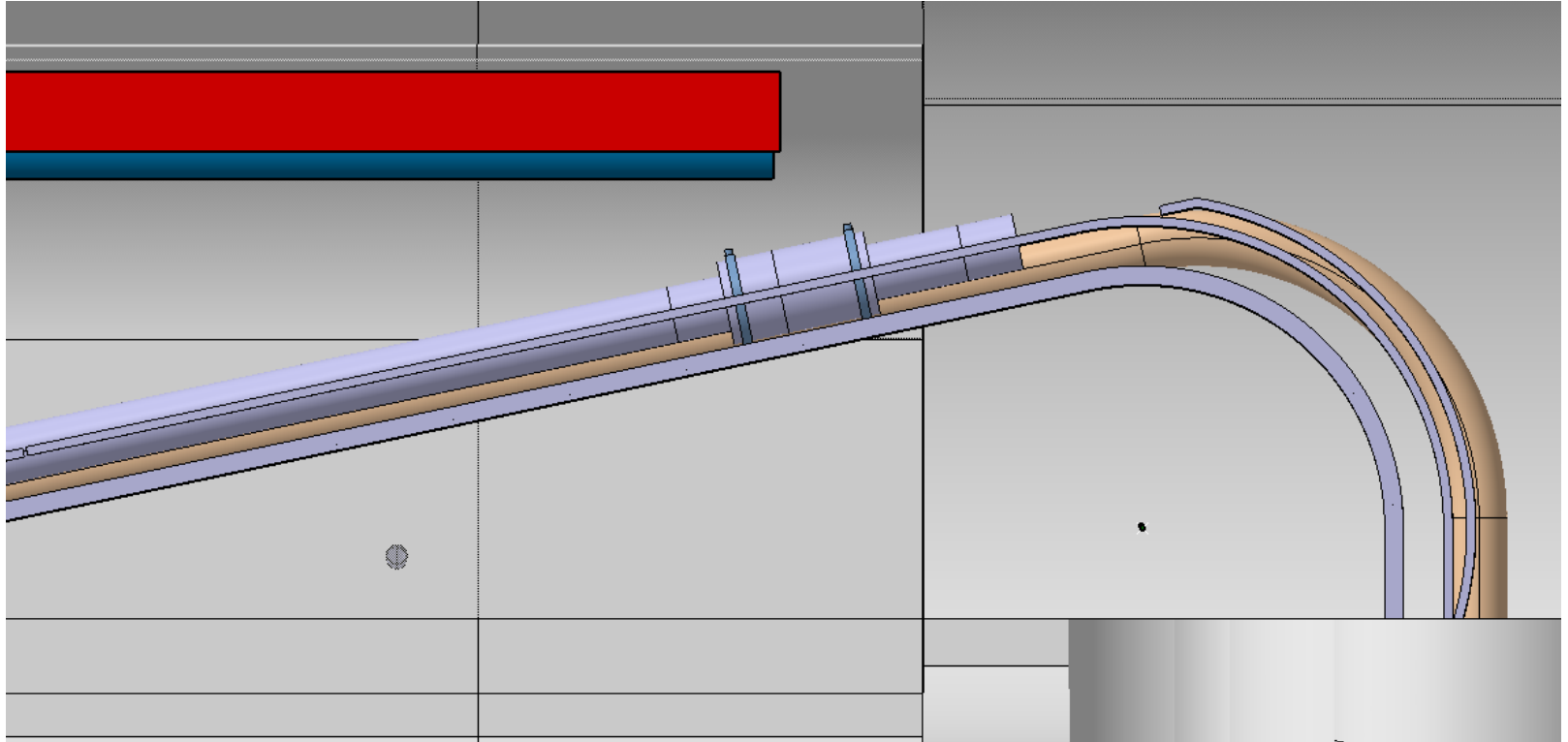
- Transport into the UL tunnel



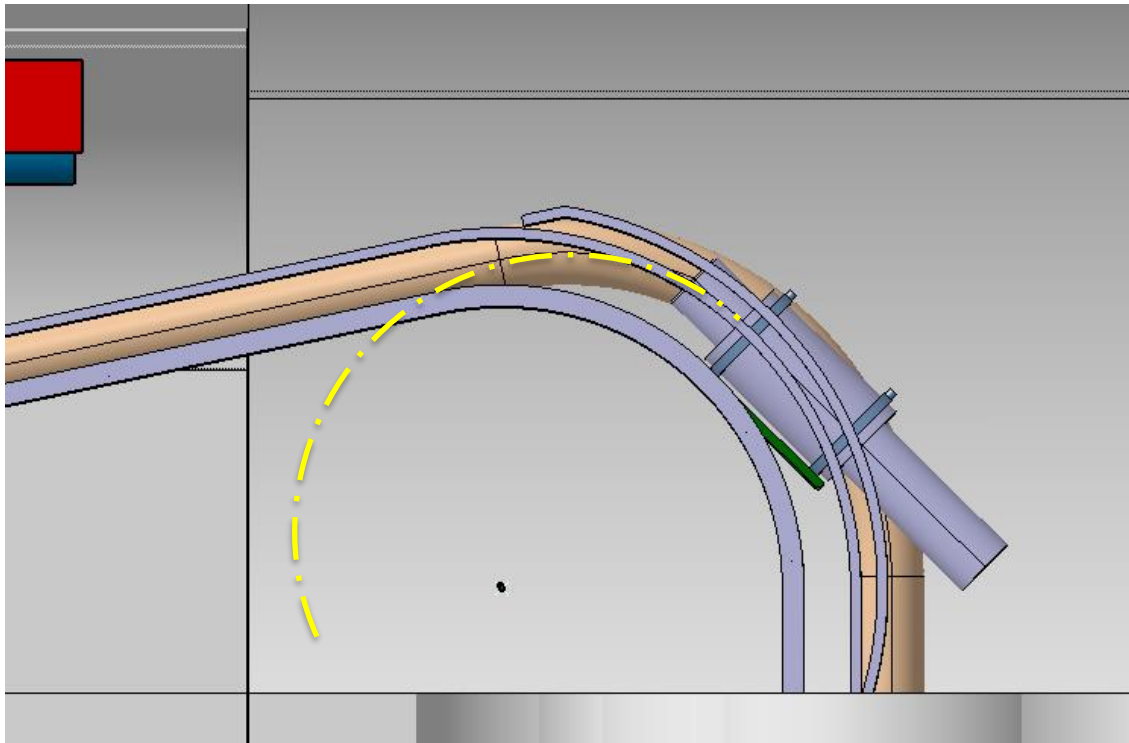
- Towards the vertical shaft



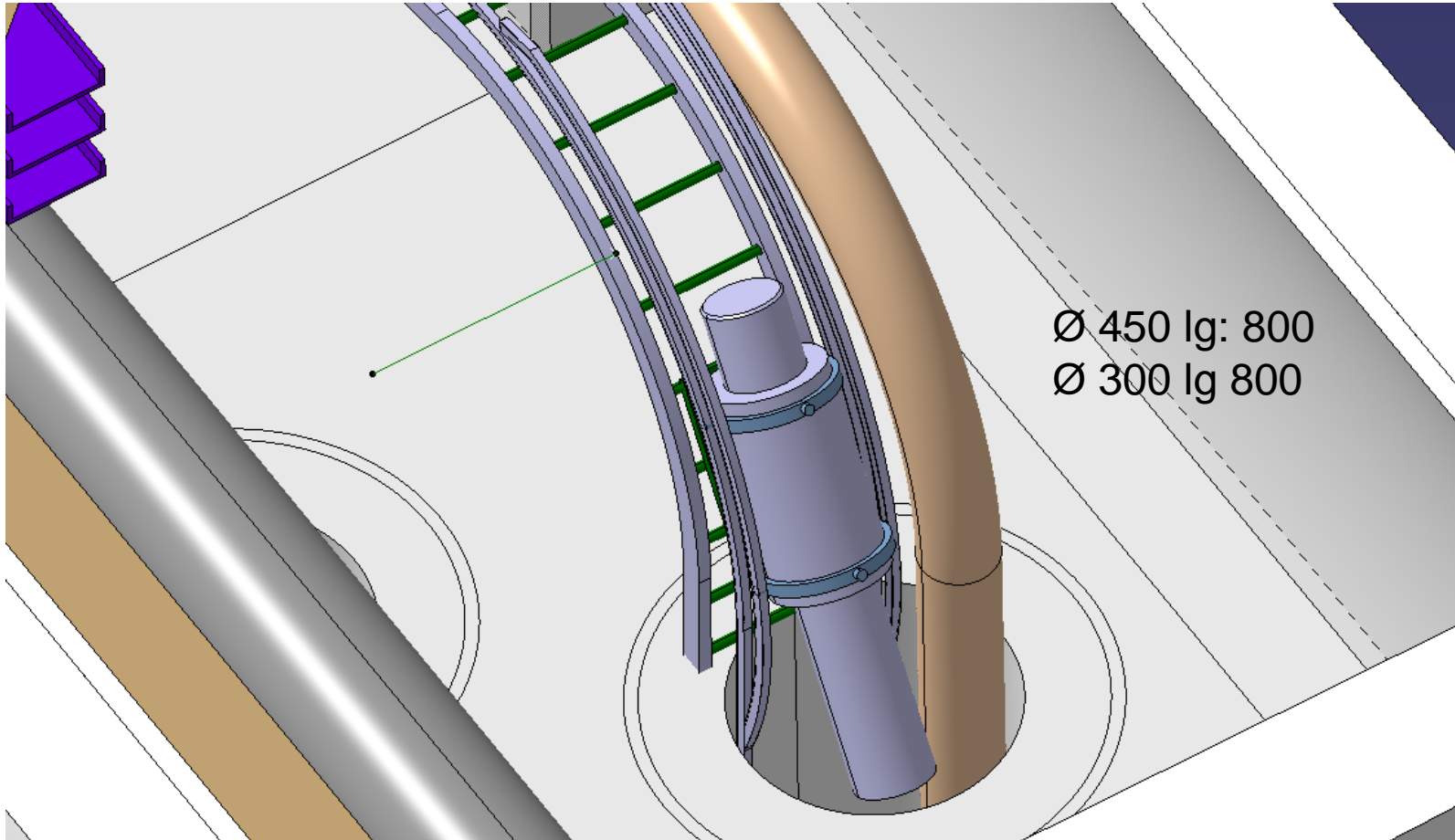
- Guiding rails to maintain the minimal radius...



- ... and prevent overbending at the cryostat / head junction (tangent to guiding)



- Insertion in the vertical shaft



- With previously installed DSHm

