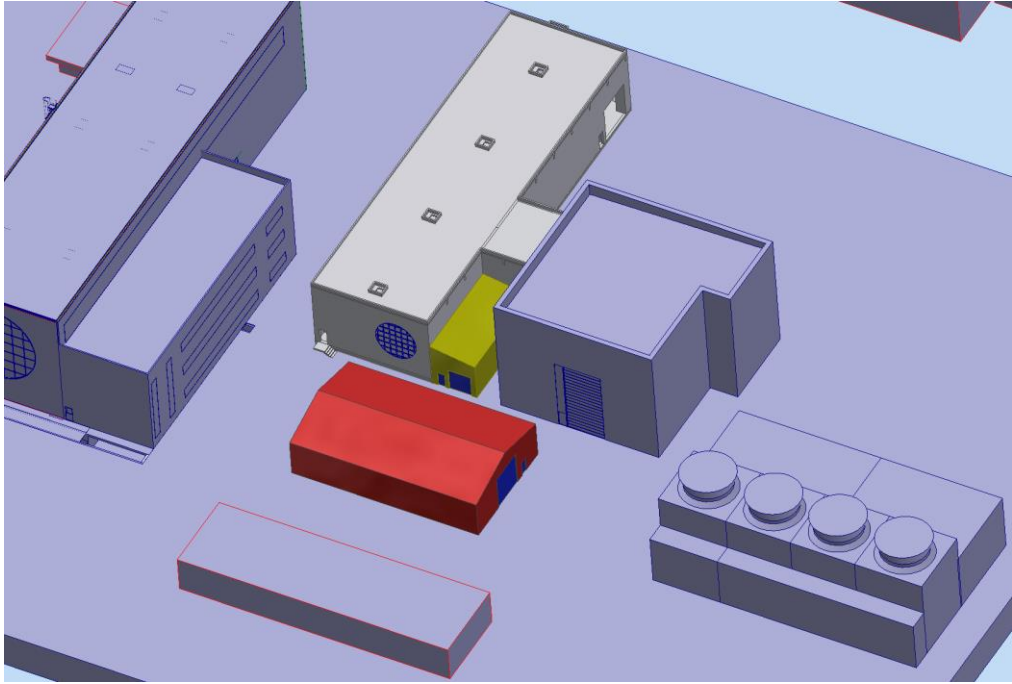


EP/DT

Work for LHCb Technical Coordination in 2018
(Olivier Jamet & Mark Hatch)



Tender documentation and contract follow-up for two storage facilities to be used for LS2.
The **large** one for the buffer storage of parts removed from the cavern during LS2.
The **small** one for the storage of cable drums for the new cable installation.



LHCb TC has:

- Planned in advance for LS2:
 - to try and be ready at the start of LS2 for the work that is to be done in a safe approved manner.
 - to try and respect the schedule
- Worked in close collaboration with CERN-HSE & HSE-RP and produced work procedures and safety document templates specifically for LS2.
- Collaborated with LHCb experiment teams:
 - On outstanding Work Package Procedure documents
 - On the Work Safety Plan documents, RP measures and PPE requirements
 - Develop the overall Safety training needs and inform HSE-Safety Training.

3 Documents that cover the overall **work plan/context**, the **work procedure** description followed by the related **safety plan**.

1

Work and Safety Coordination Plan (WSCP) LHCb upgrade LS2
Specifications and requirements

This 'Work and Safety Coordination Plan (WSCP)' describes the minimum safety requirements that are to be followed by all 'operating entities' (CERN groups, institutes, contractors) during the upgrade work operations for LHCb during the long shut-down (LS2). This document is 3 of 3.

Prepared by : Mark Hatch	Checked by : Eric Thomas (GLIMOS), Olivier Bernard Prostreau (HSE-SEE-SV).	Approved by : Rolf Linder (TC)
------------------------------------	--	--

2

Work Package Procedure (WPP)
Document 2 of 3.
Template

Abstract
Type here: Short description of your work package.

Distribution: Please add the relevant names, including: All participants in the work package, Technical Coordinator, GLIMOS, Safety coordinator, Radiation Safety Officer (RSO).

Template Prepared by : Mark Hatch Enter here name of work package leader	Template Checked by : Eric Thomas (GLIMOS) Olivier Bernard Prostreau (HSE-SEE-SV).	Template Approved by : Rolf Linder
---	--	--

3

Work Package Safety Plan (WPSP)
Document 3 of 3
Template

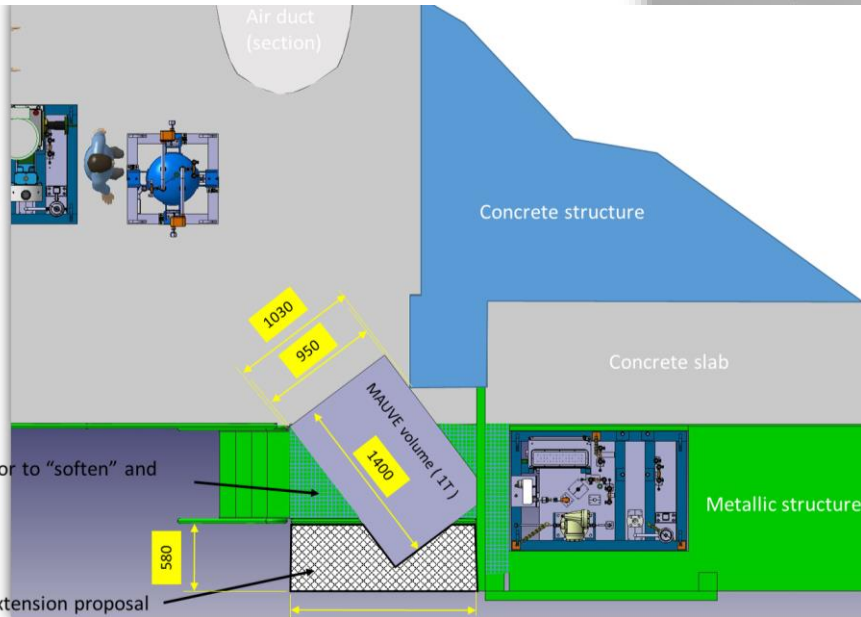
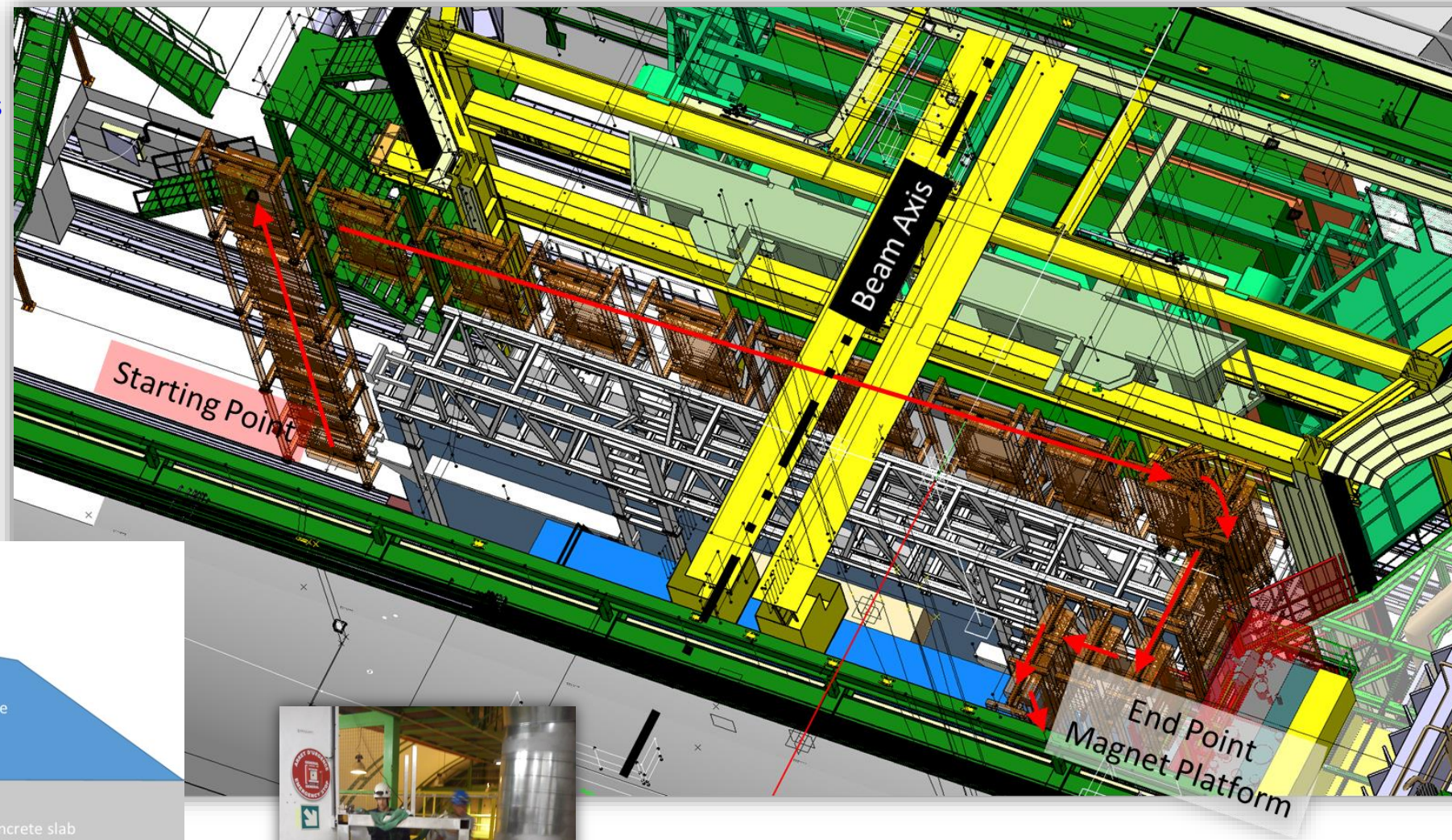
Abstract
Type here: Short description of your work package.

Distribution: Please add the relevant names, including: All participants in the work package, Technical Coordinator, GLIMOS, Safety coordinator.

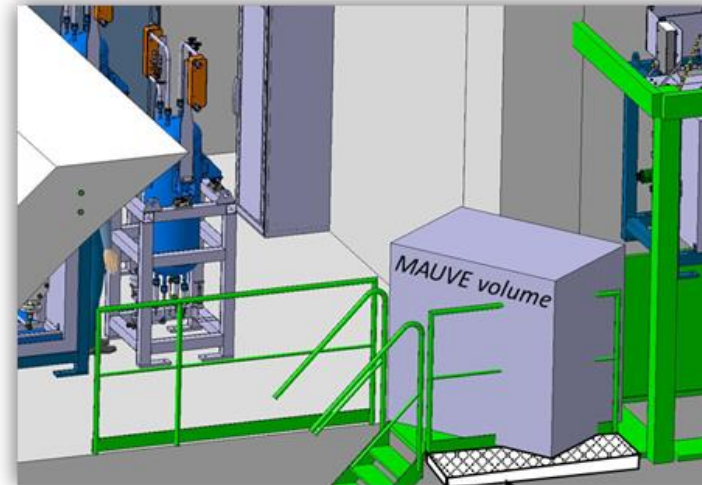
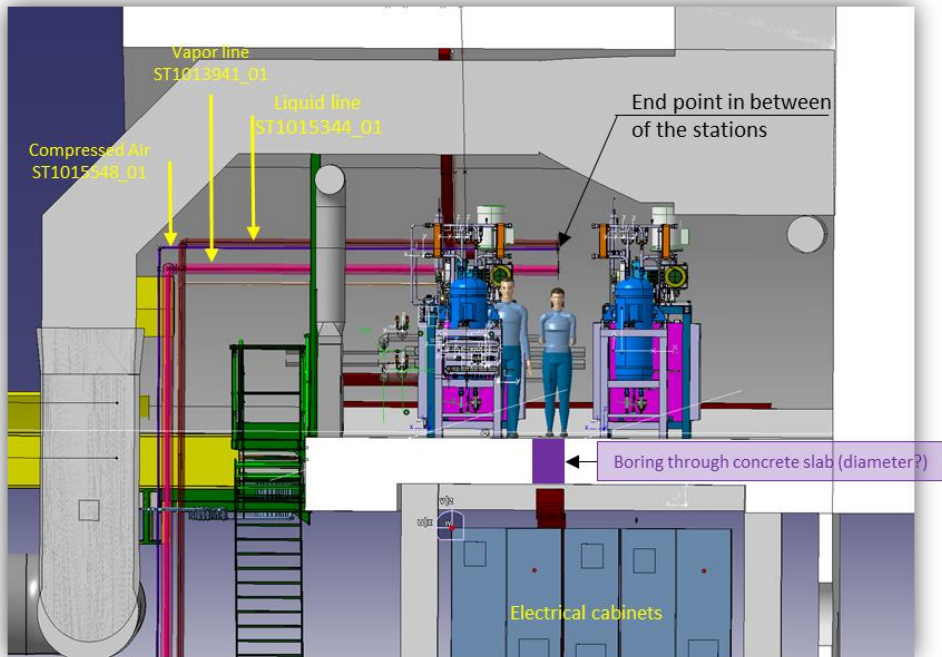
Template prepared by : Mark Hatch	Template checked by : Eric Thomas (GLIMOS) Gloria Corti (RSO) Olivier Bernard Prostreau (HSE-SEE-SV).	Template approved by : Rolf Linder
---	---	--

LHCb TC has:

- Planned in advance for LS2:
 - Integration works for sub detectors installation scenario (ex: UT)



- Planned in advance for LS2:
 - Integration works for tooling, services (cooling) and access structure



Platform above RICH2

Platform extension "proposal"

