

SPS final week (49) of Run II

Availability

85.3%

Blocking Faults

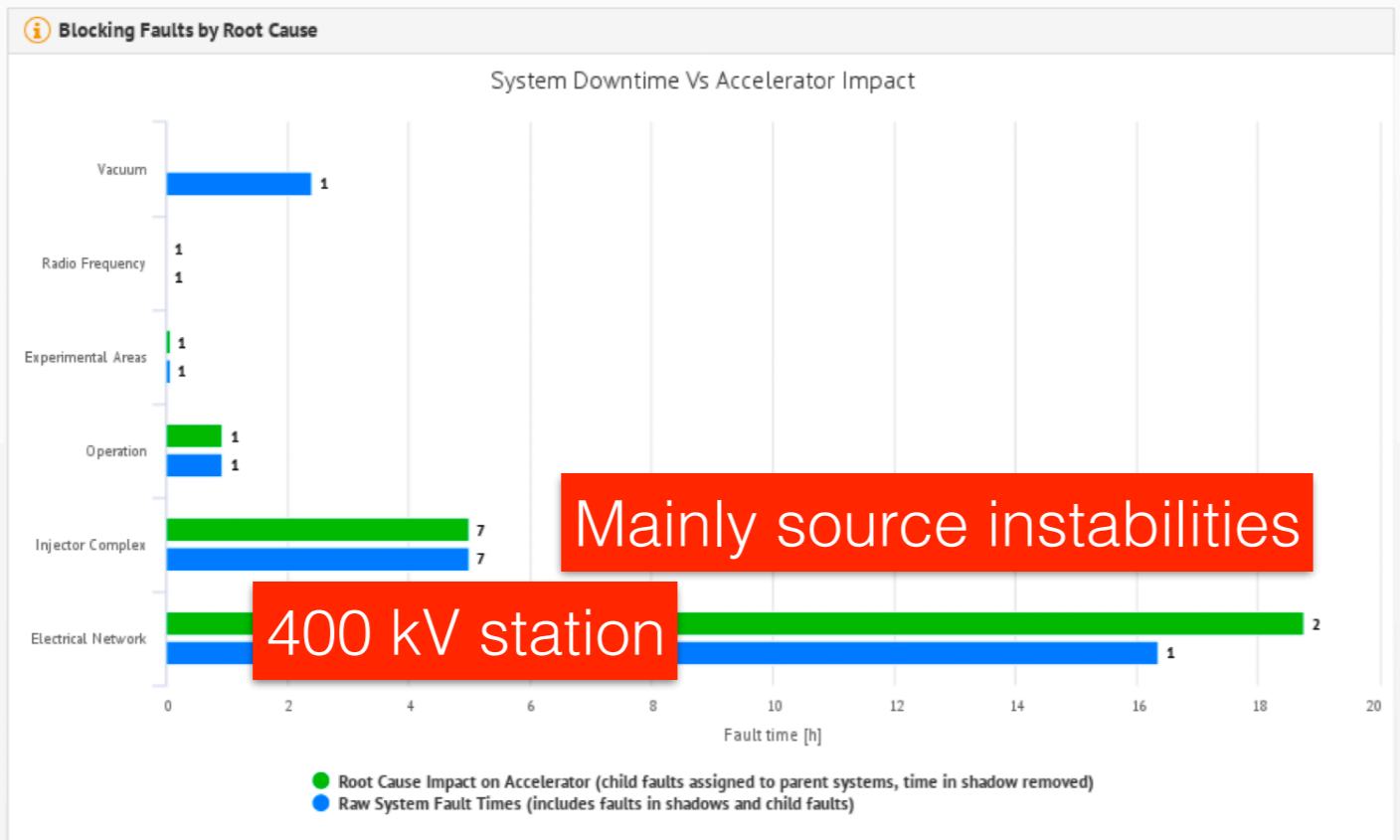
12

Total Faults

12

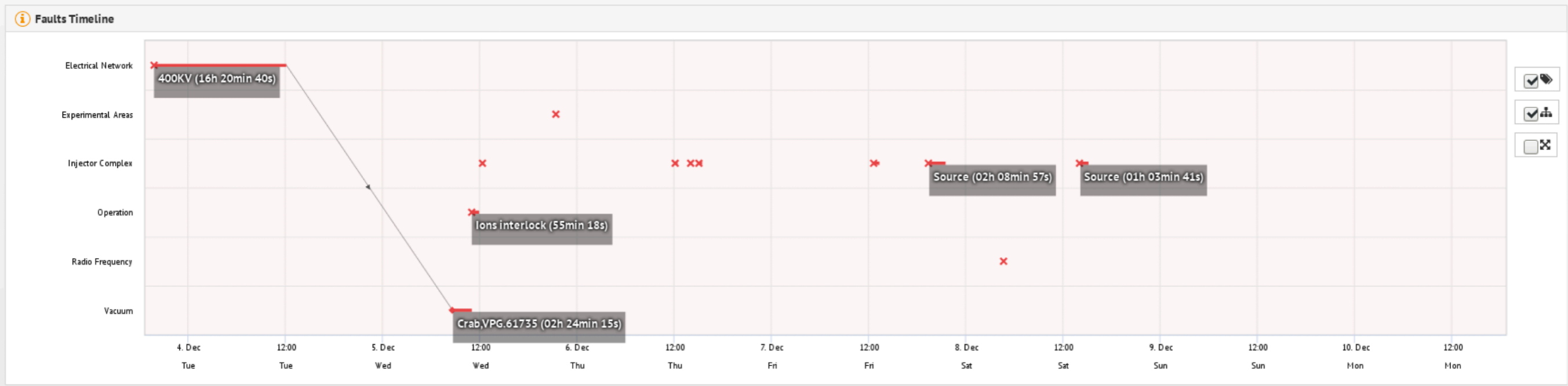
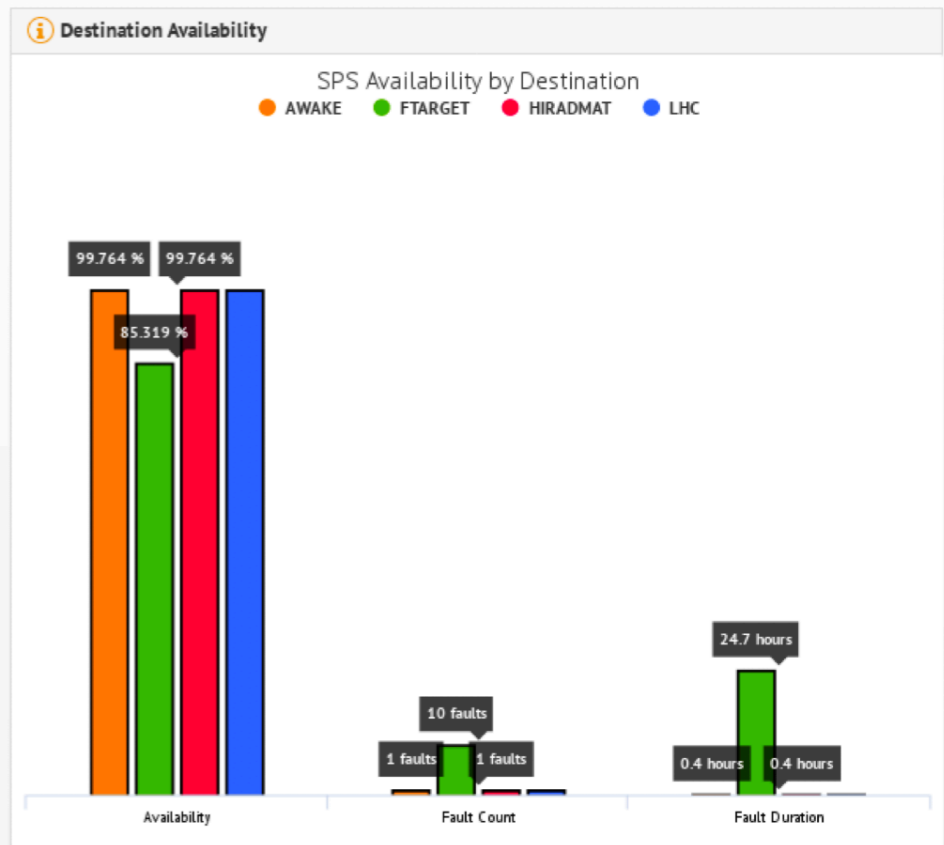
Fault Duration (overlap excluded)

24.8h



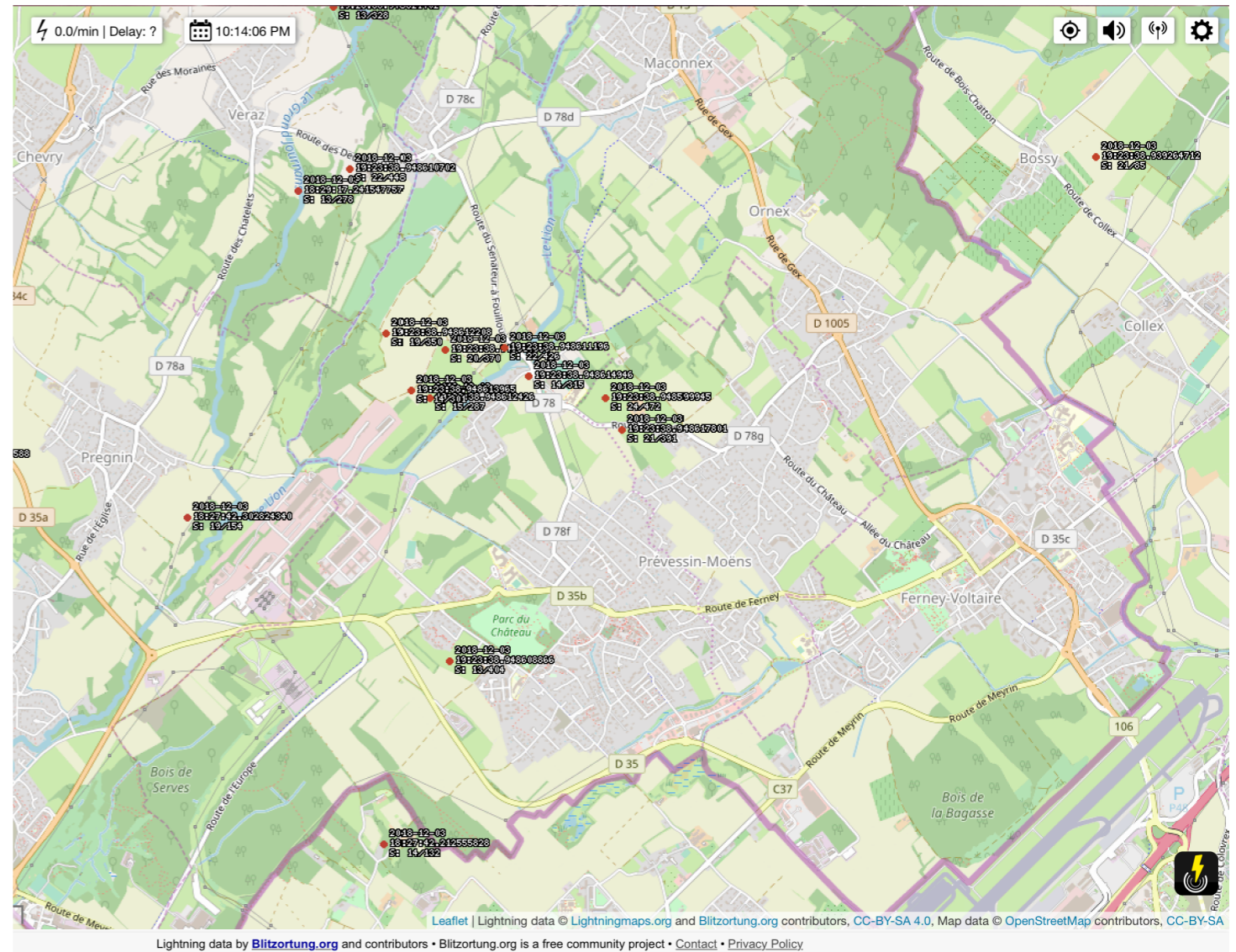
Mainly source instabilities

400 kV station



SPS final week (49) of Run II

- Last week of physics for NA
 - ↳ 36.8 ZGeV/c beam delivered
- Week started with quick and efficient energy change...
 - ↳ ...but then a lightning stroke very close to the 400/66kV transformer EHT5
 - ↳ Power limited but anyway running with very low energy cycle
- That provoked the need for an access for the crab cavities the same day and also the day after
- Source unstable Saturday - expert worked for the whole day to stabilise it



Linac3 Sat Dec 08 18:52:10 CET 2018

