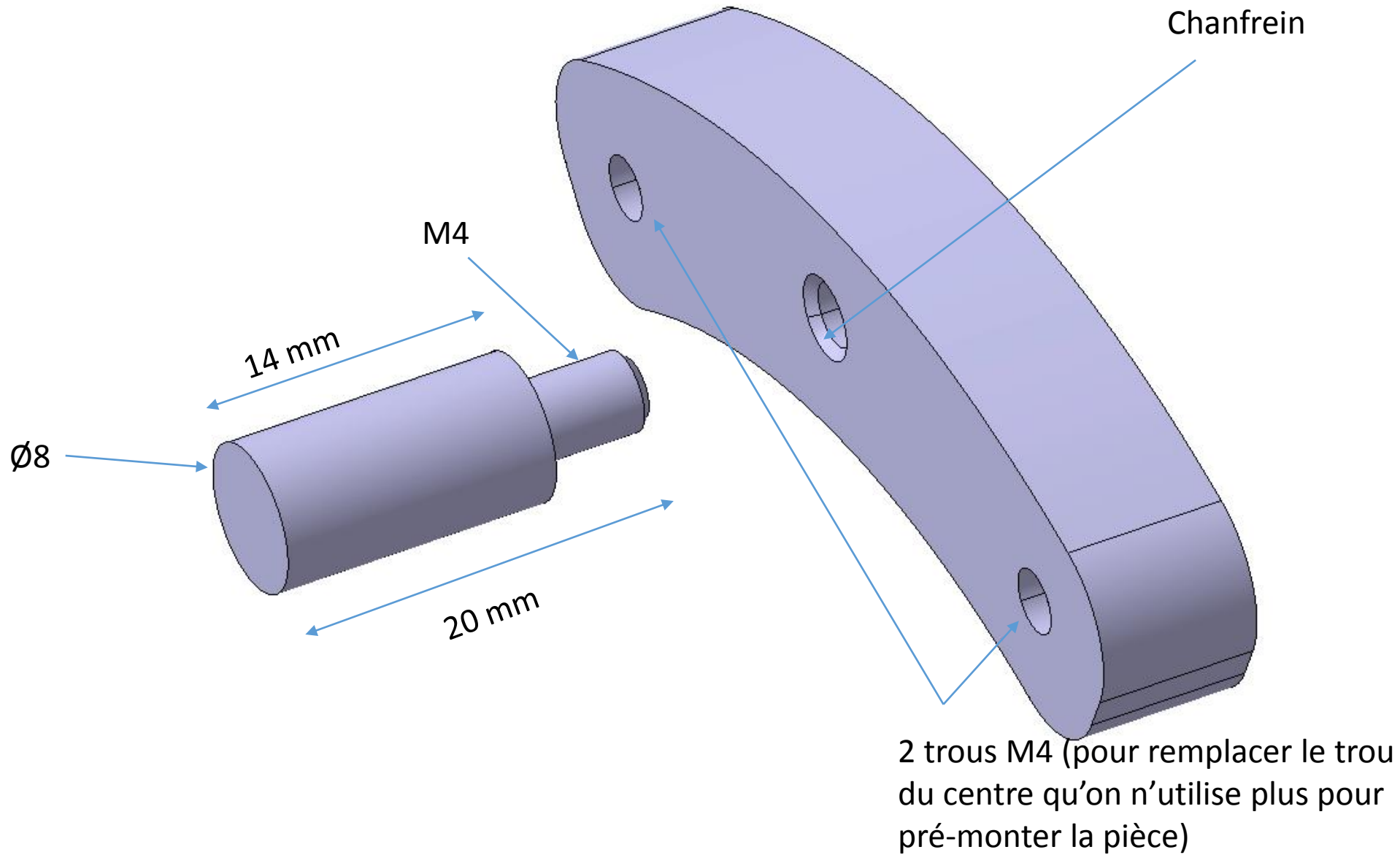
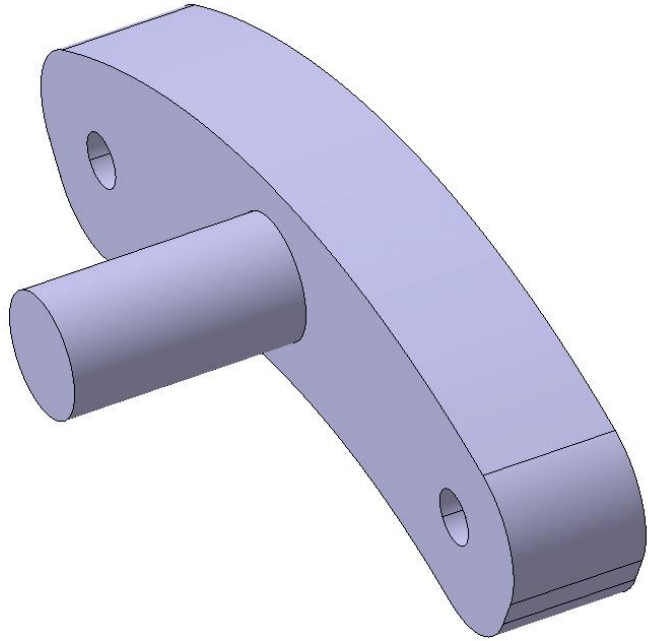
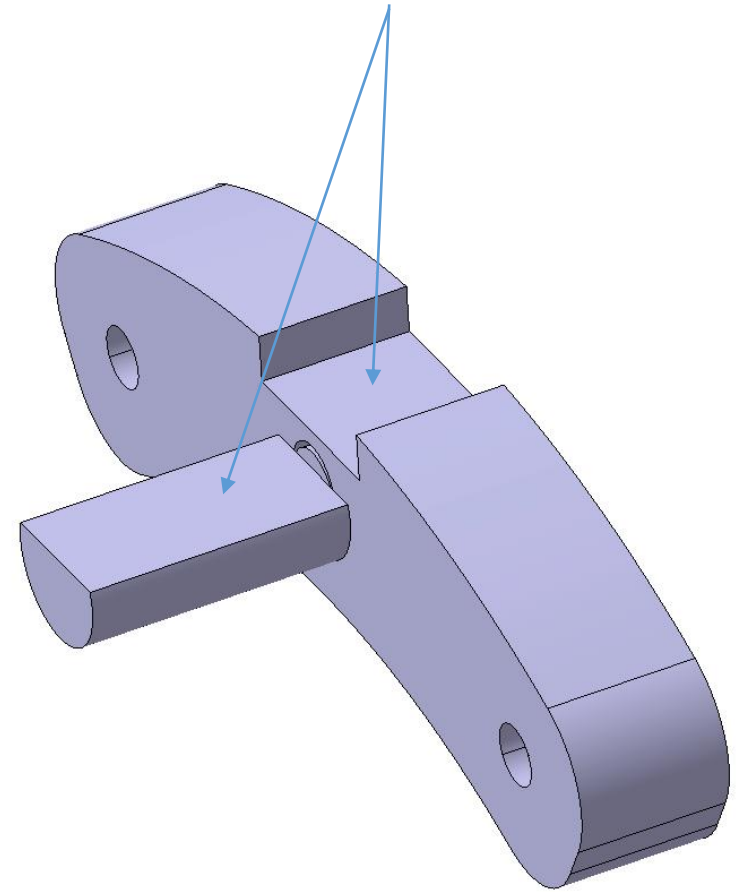


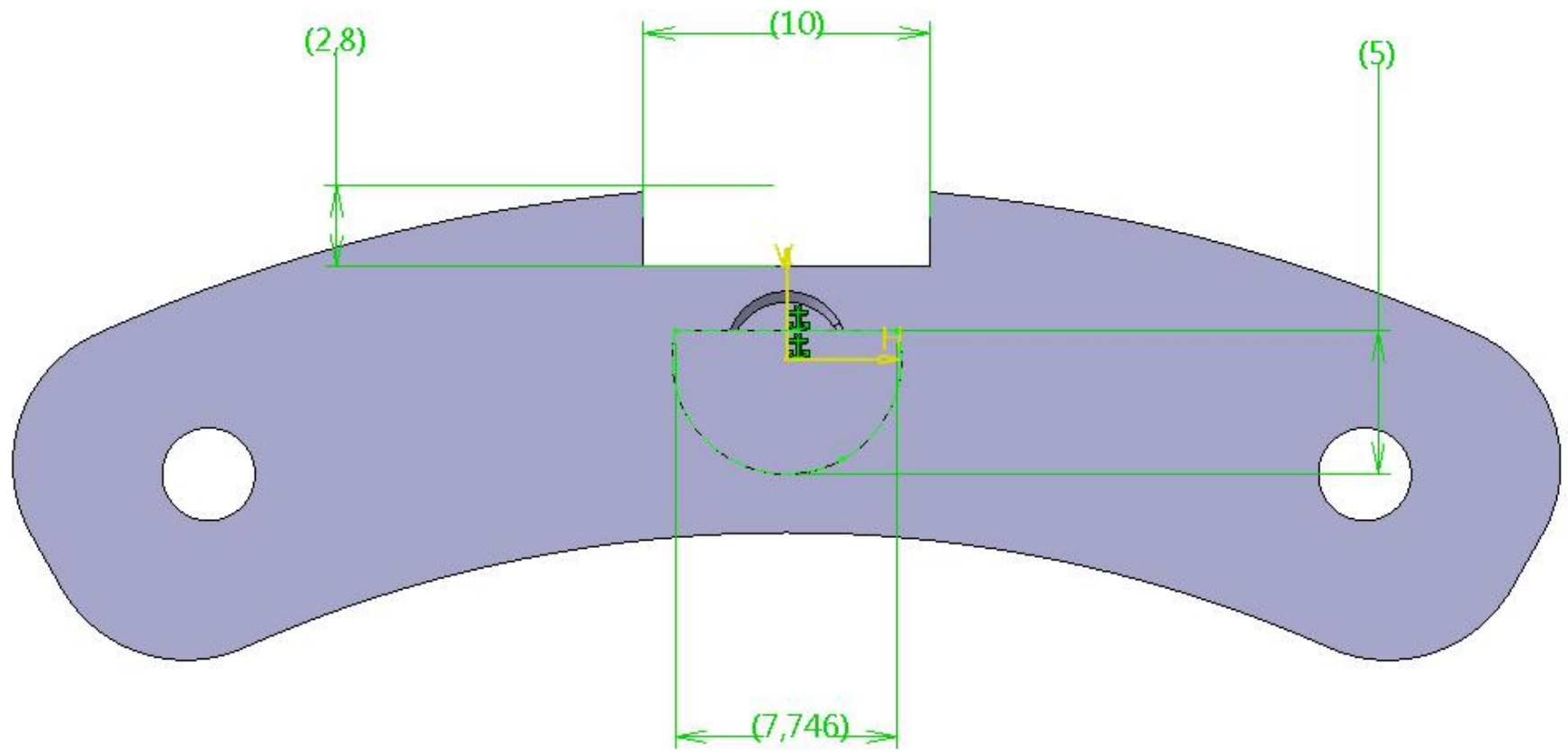
Assemblage vissé (+frein filet ou soudure ?)



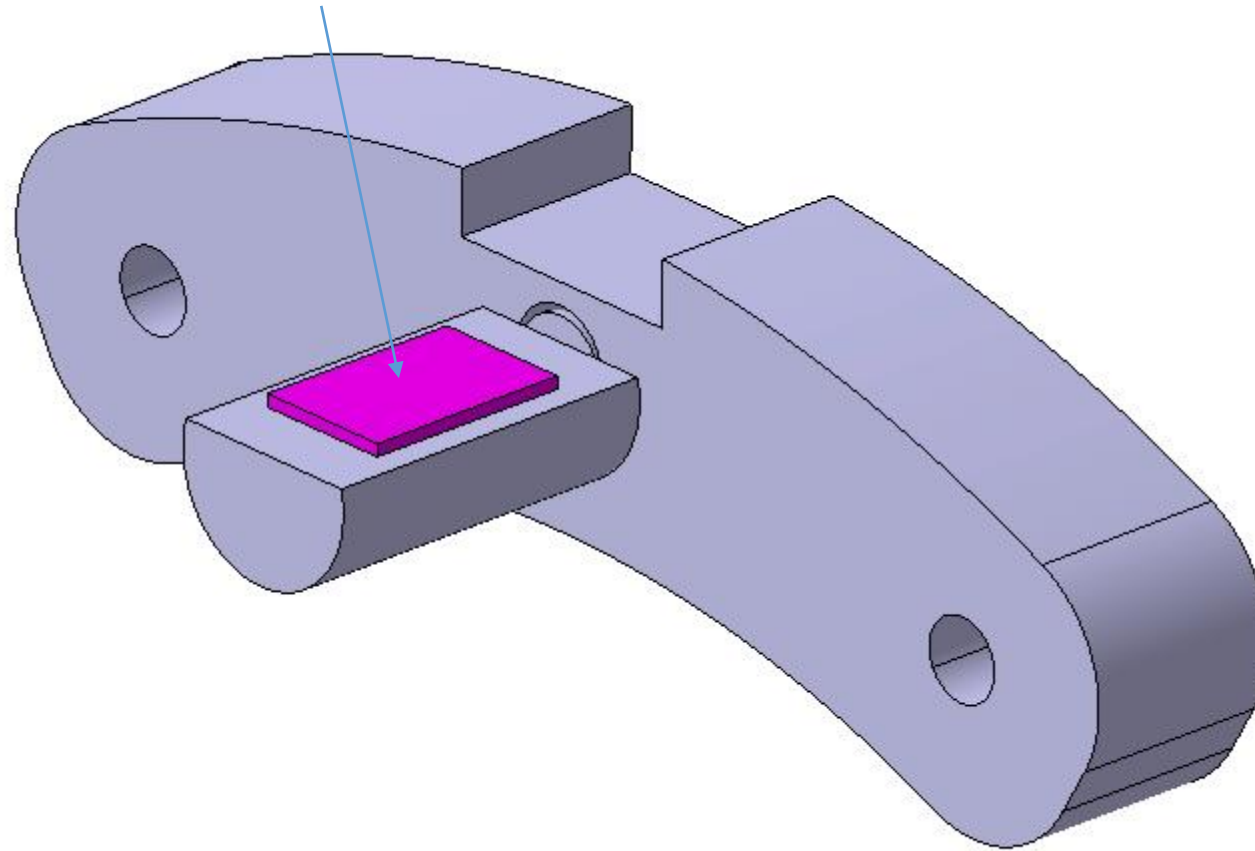


Usinage des deux face //



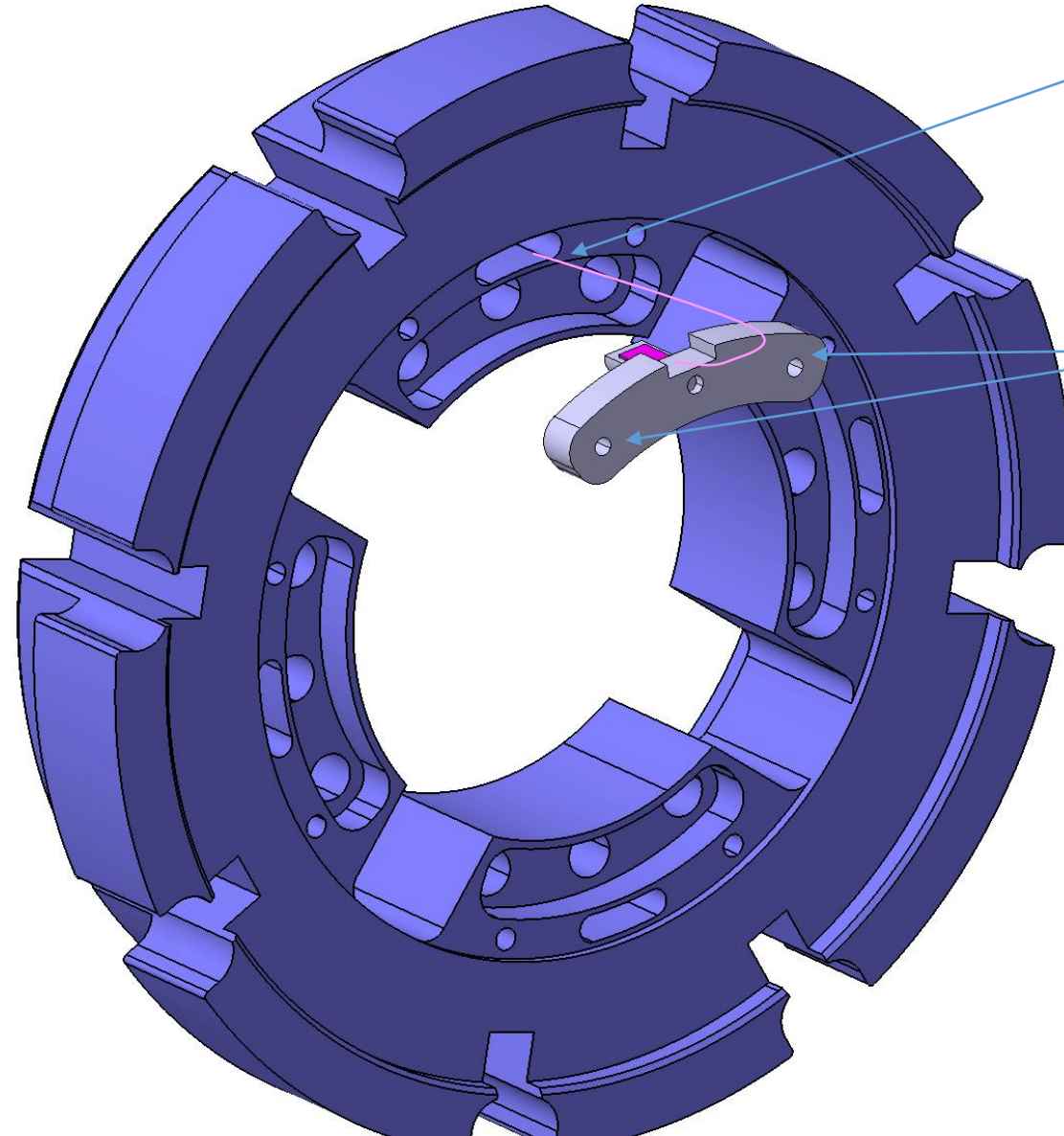


Jauge 8,5 x 5,5 x 0,5
(1-LC11-3/120)



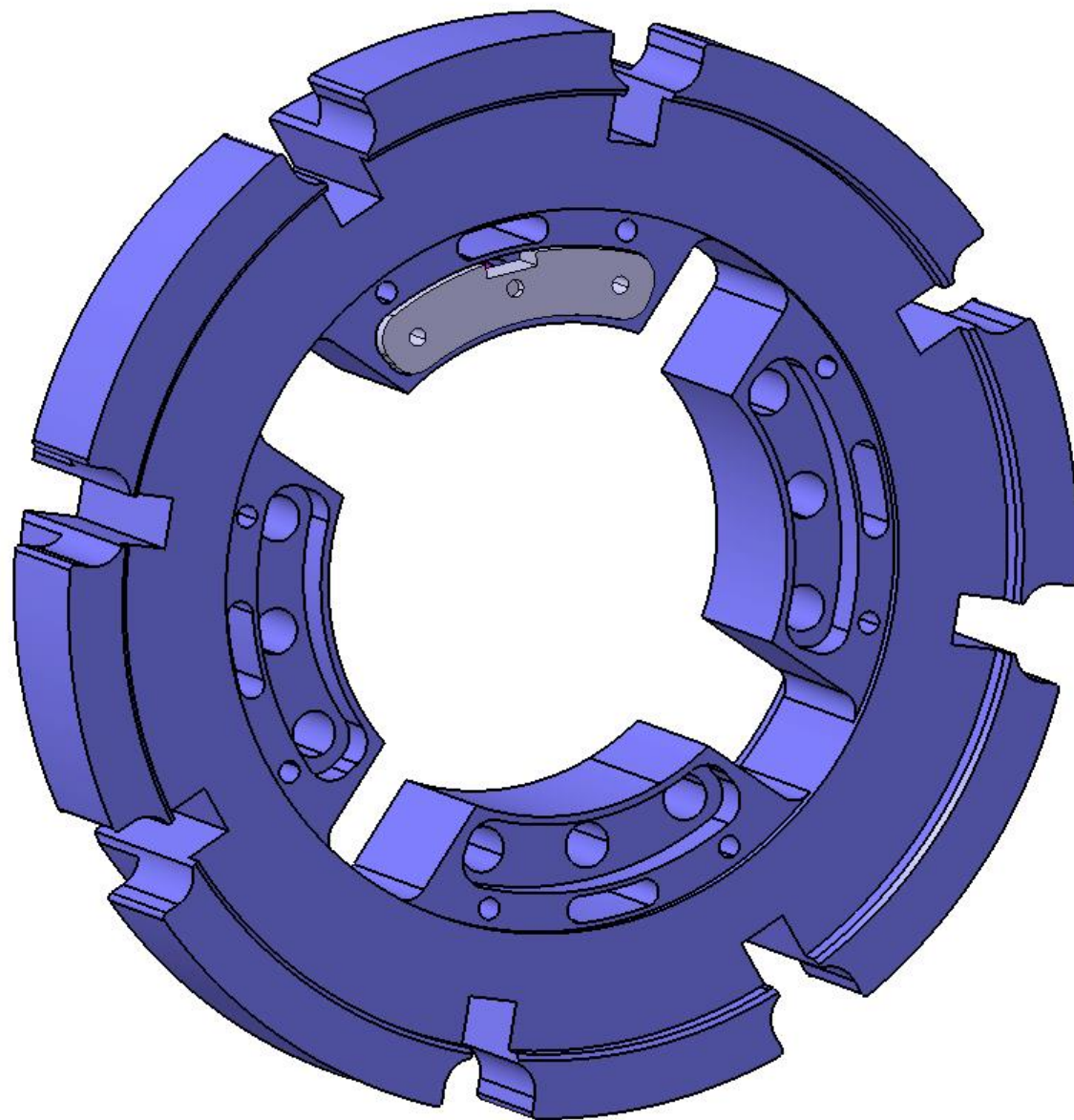
Mise en place dans la bride

Passage du fil de la jauge
dans le oblong de la bride

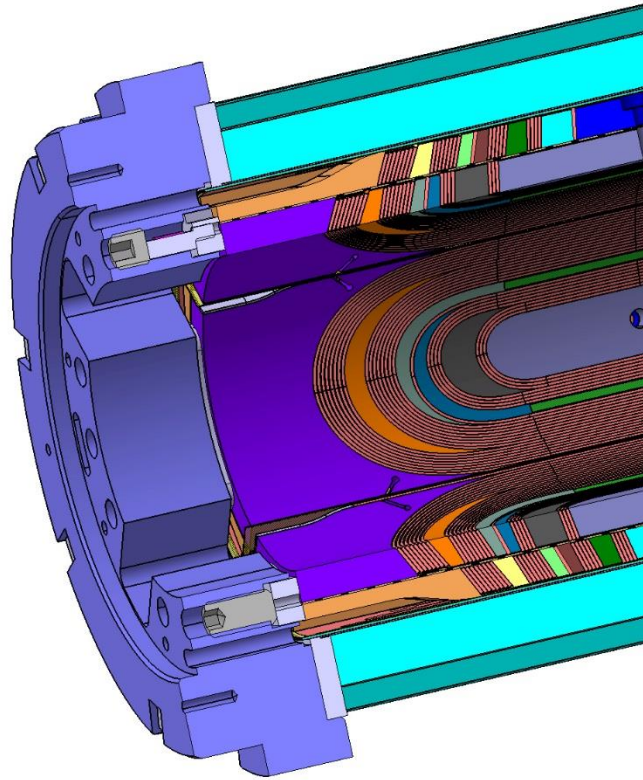


Trous M4 pour pré montage

Fin de l'assemblage dans la bride (a répéter 4 fois)



Assemblage dans l'aimant



Vis M10x10 (frein filet ?)

