

# Tier-1 CPU Usage - December 2018

Alastair Dewhurst

# Introduction

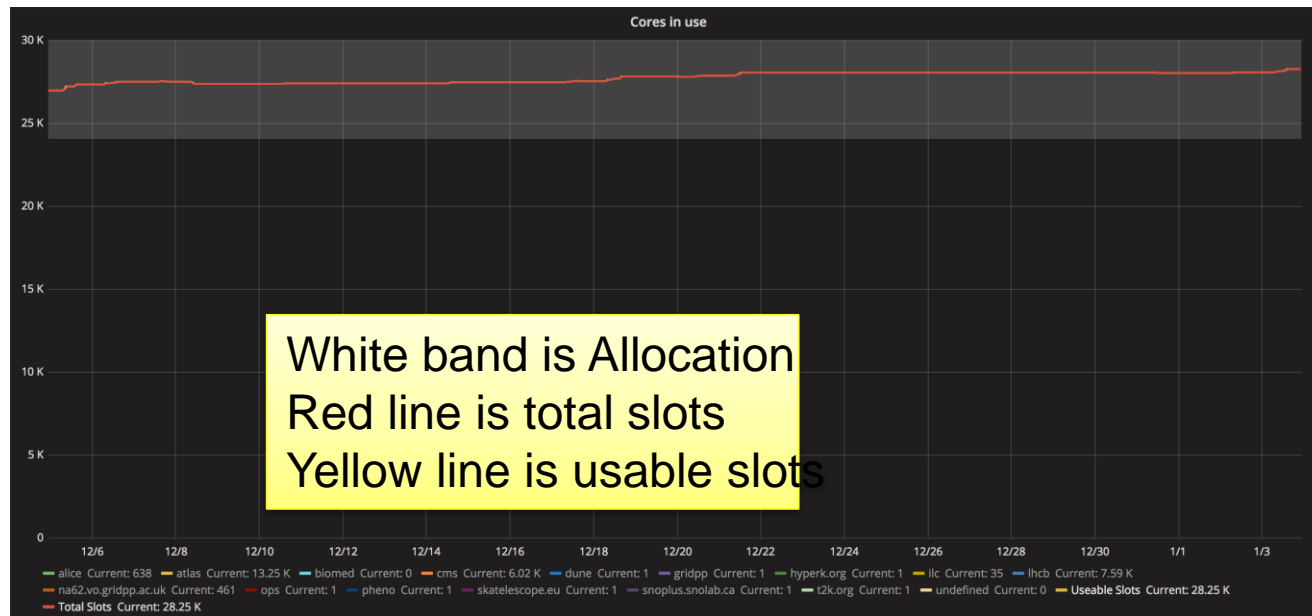
These slides are designed to give the VOs an understanding of their batch farm usage for the month.

- There are two separate questions that need answering:
  - Is sufficient capacity deployed?
  - Is the VO getting its fair share of resources?
- Deploying a sufficient amount of capacity is entirely a Tier-1 problem.
- Historically if a VO didn't get its fairshare it was assumed they hadn't submitted enough jobs for whatever reason.
- More complicated brokerage (e.g. Multi-Core) means that it might be a Tier-1 issue.



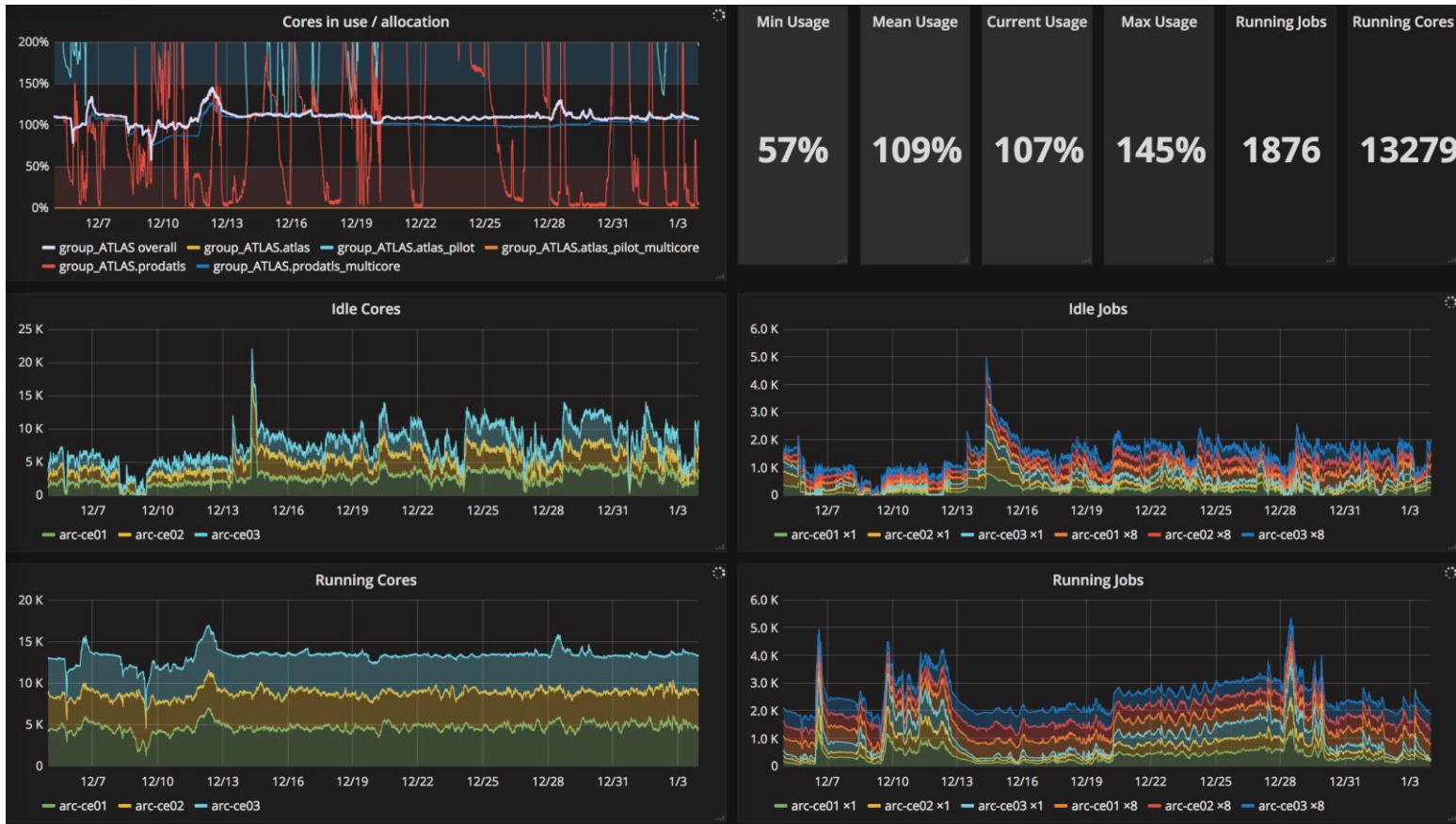
# Deployed Capacity

- Allocation for 2018 is 245196 HS06
- Average usable for December was 293680 HS06.



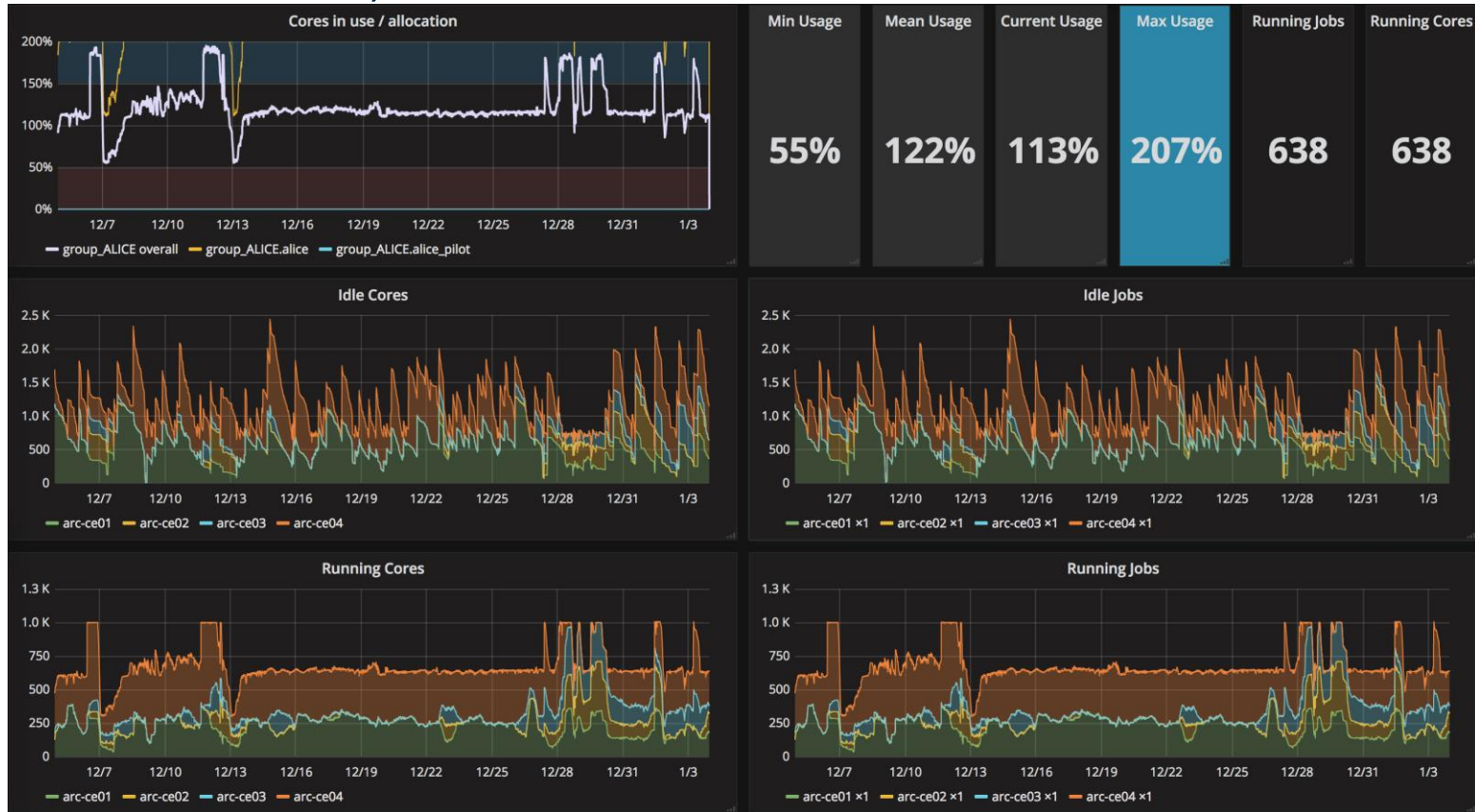
# ATLAS

- All OK.



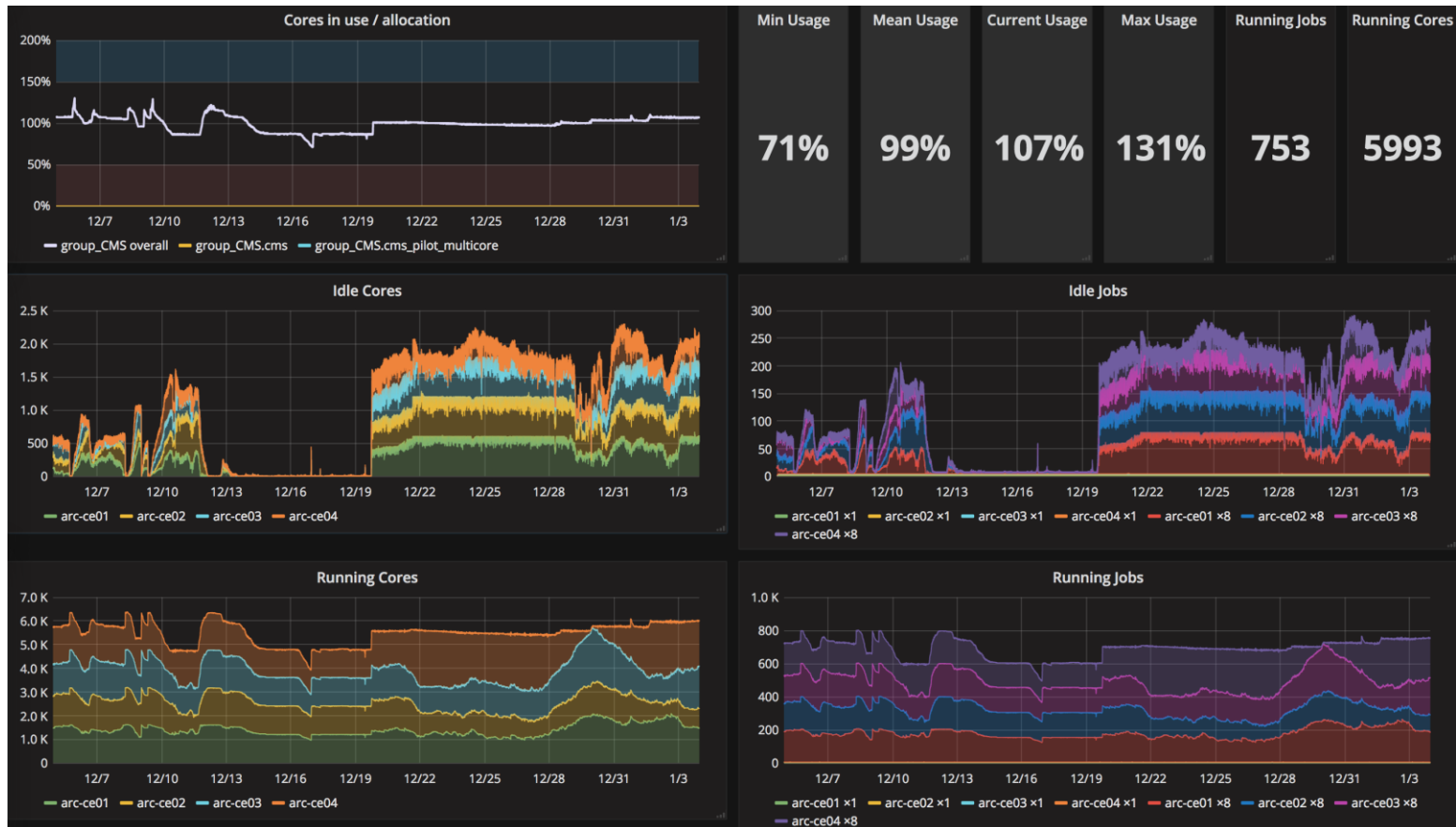
# ALICE

- Cap of 1000 jobs was put in place to stop ALICE taking too many slots (and not giving them back for 96hours).



# CMS

- CMS ran low on jobs from 12<sup>th</sup> - 19<sup>th</sup> December.
- Echo was experiencing transfer failures from 5<sup>th</sup> - 10<sup>th</sup> December, but we don't believe this related.



# LHCb

- All OK.

