

Tier-1 CPU Usage - November 2018

Alastair Dewhurst

Introduction

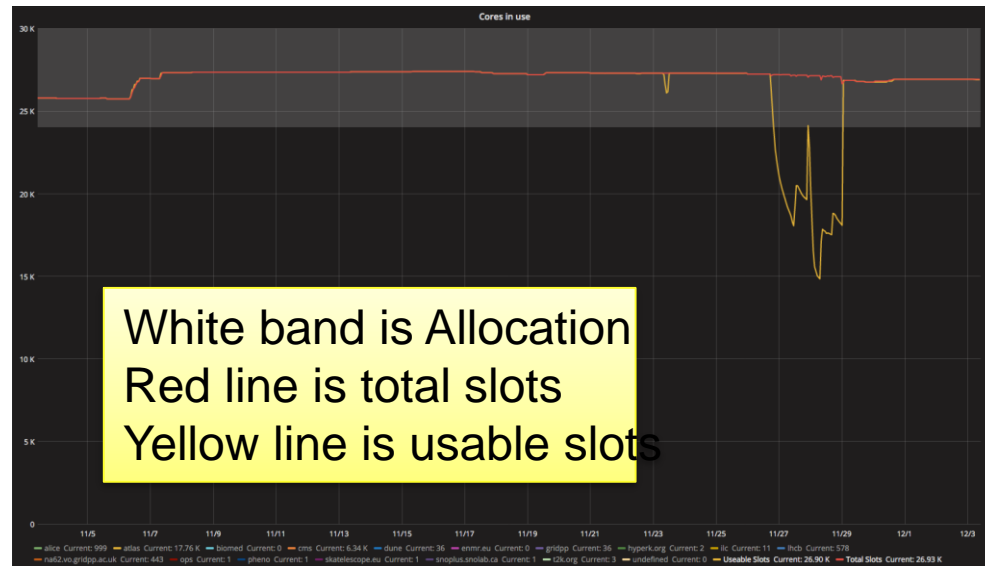
These slides are designed to give the VOs an understanding of their batch farm usage for the month.

- There are two separate questions that need answering:
 - Is sufficient capacity deployed?
 - Is the VO getting its fair share of resources?
- Deploying a sufficient amount of capacity is entirely a Tier-1 problem.
- Historically if a VO didn't get its fairshare it was assumed they hadn't submitted enough jobs for whatever reason.
- More complicated brokerage (e.g. Multi-Core) means that it might be a Tier-1 issue.



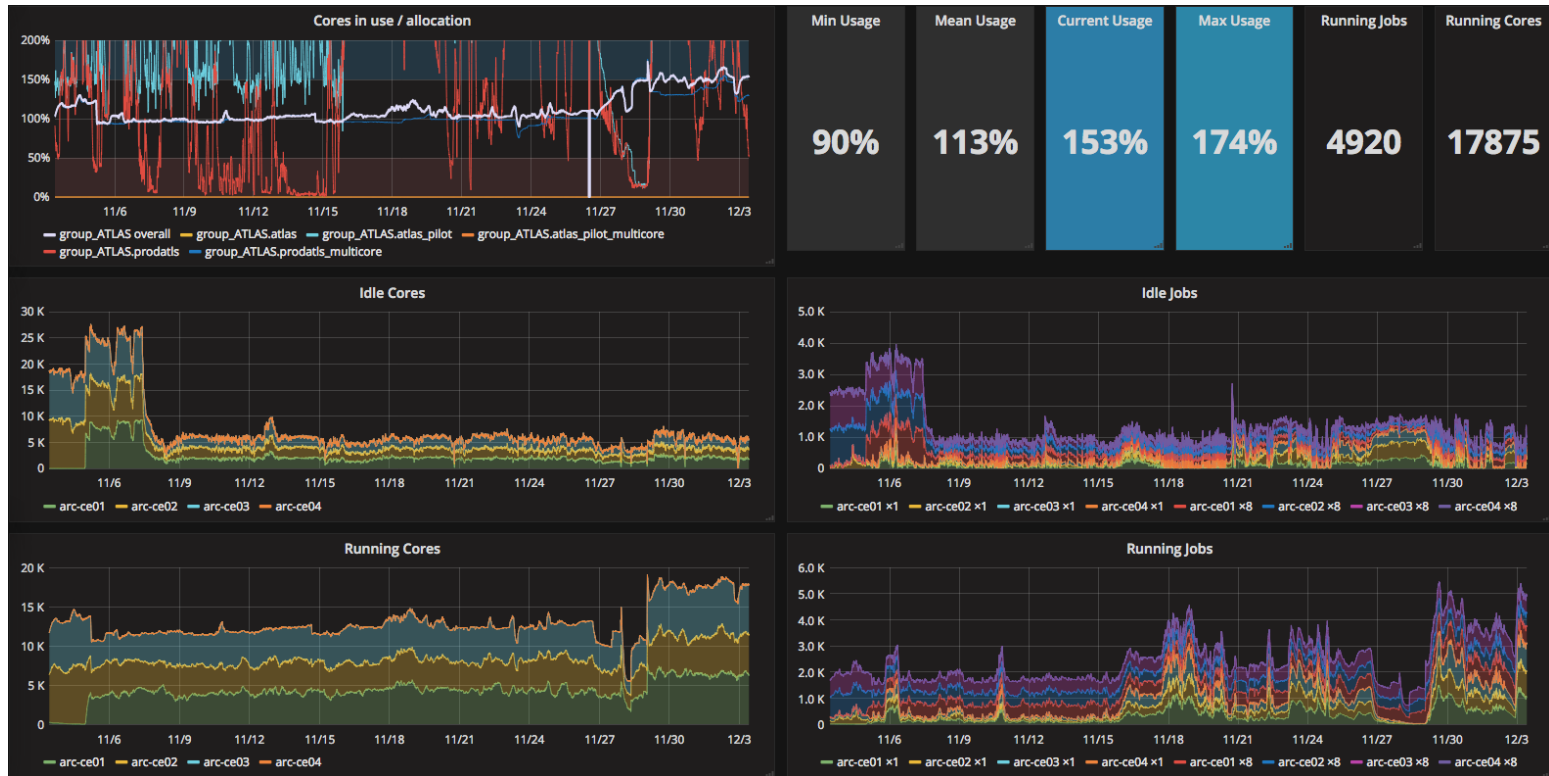
Deployed Capacity

- Allocation for 2018 is 245196 HS06
- Average usable for October was 280514 HS06.
- Drain + reboot of nodes on 27th - 28th November for Security patching (CVE-2018-18955).



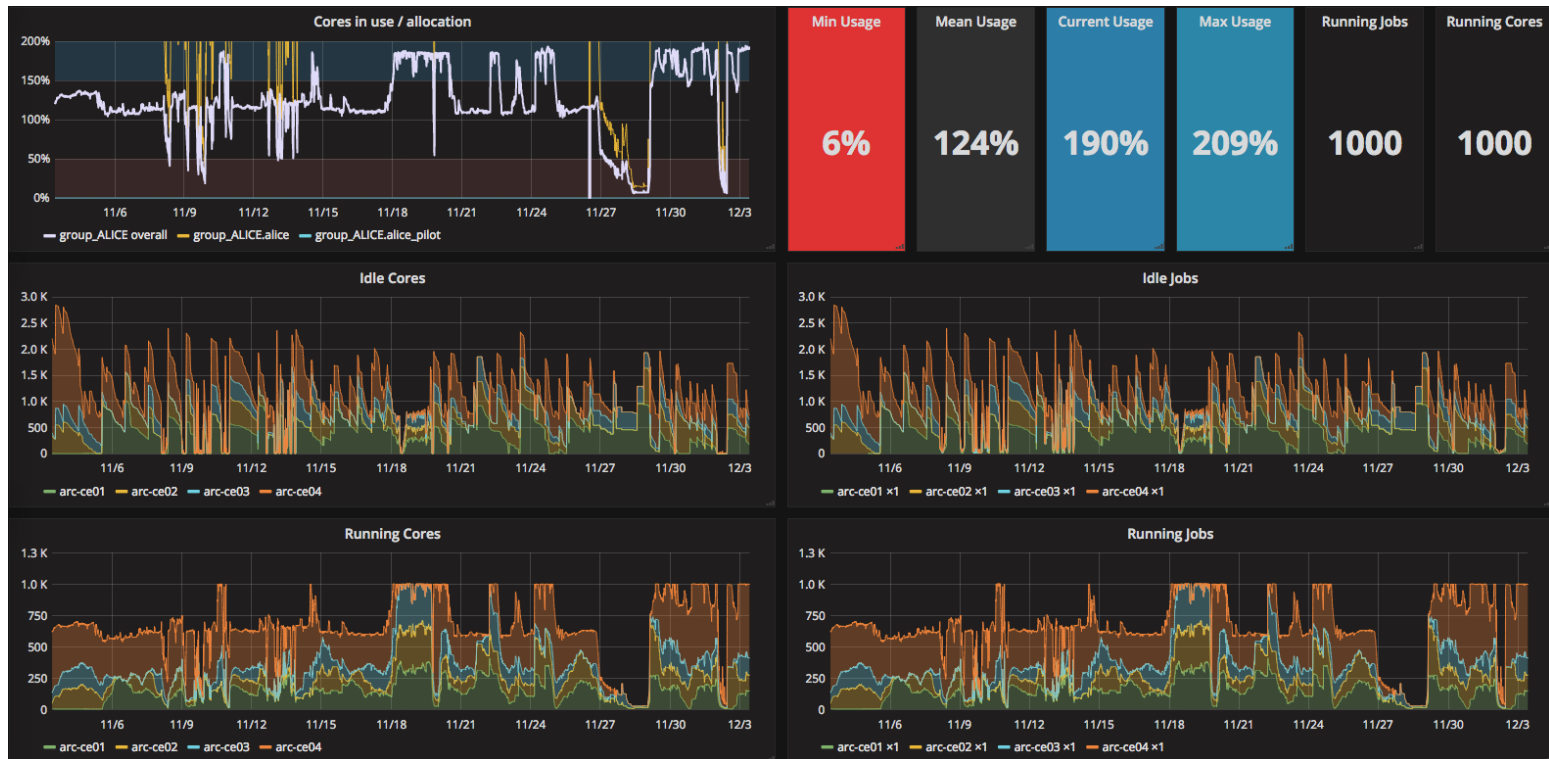
ATLAS

- All OK.



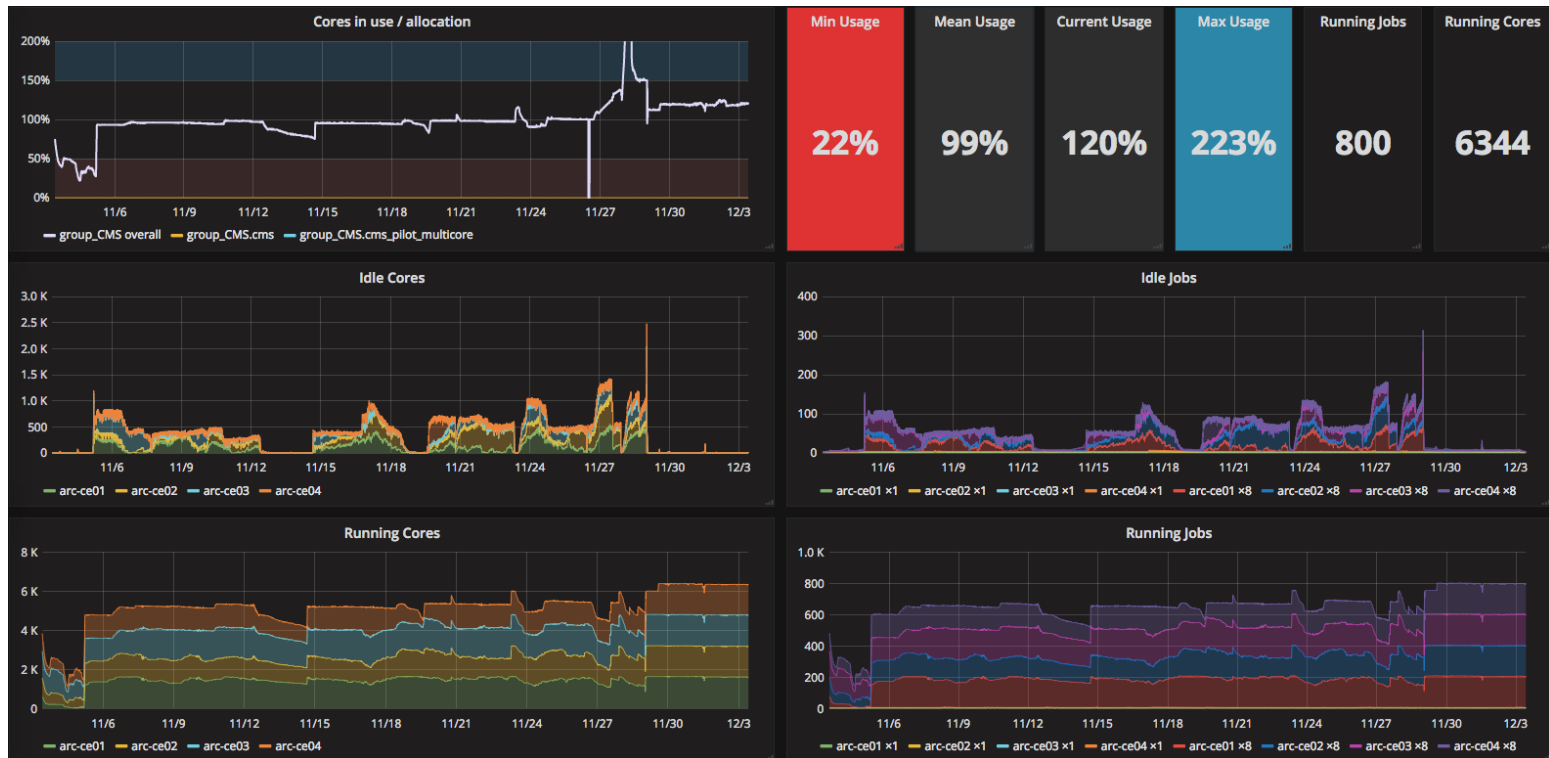
ALICE

- All OK.



CMS

- CMS are using their fairshare
- Slight concern that CMS aren't submitting enough as there are periods with very few idle jobs.



LHCb

- LHCb are investigating problems with their job submission since 27th November.

