

Tier-1 CPU Usage - October 2018

Alastair Dewhurst

Introduction

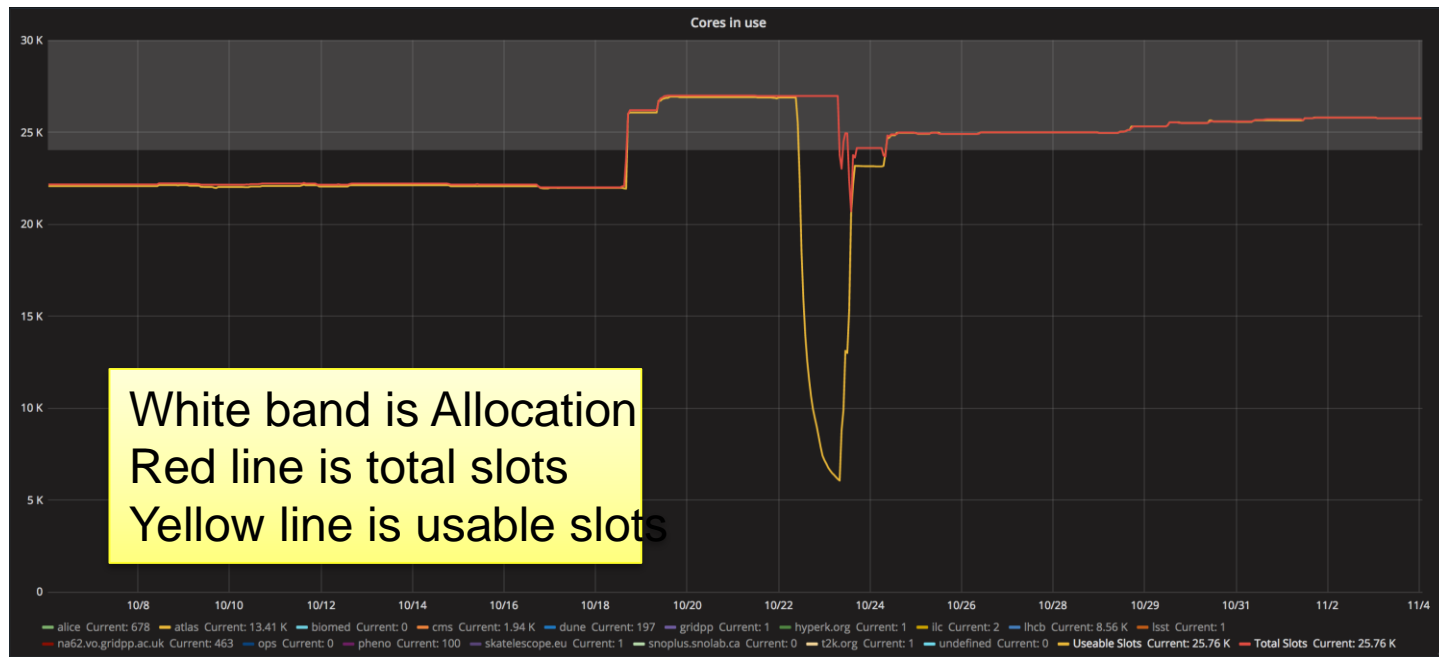
These slides are designed to give the VOs an understanding of their batch farm usage for the month.

- There are two separate questions that need answering:
 - Is sufficient capacity deployed?
 - Is the VO getting its fair share of resources?
- Deploying a sufficient amount of capacity is entirely a Tier-1 problem.
- Historically if a VO didn't get its fairshare it was assumed they hadn't submitted enough jobs for whatever reason.
- More complicated brokerage (e.g. Multi-Core) means that it might be a Tier-1 issue.



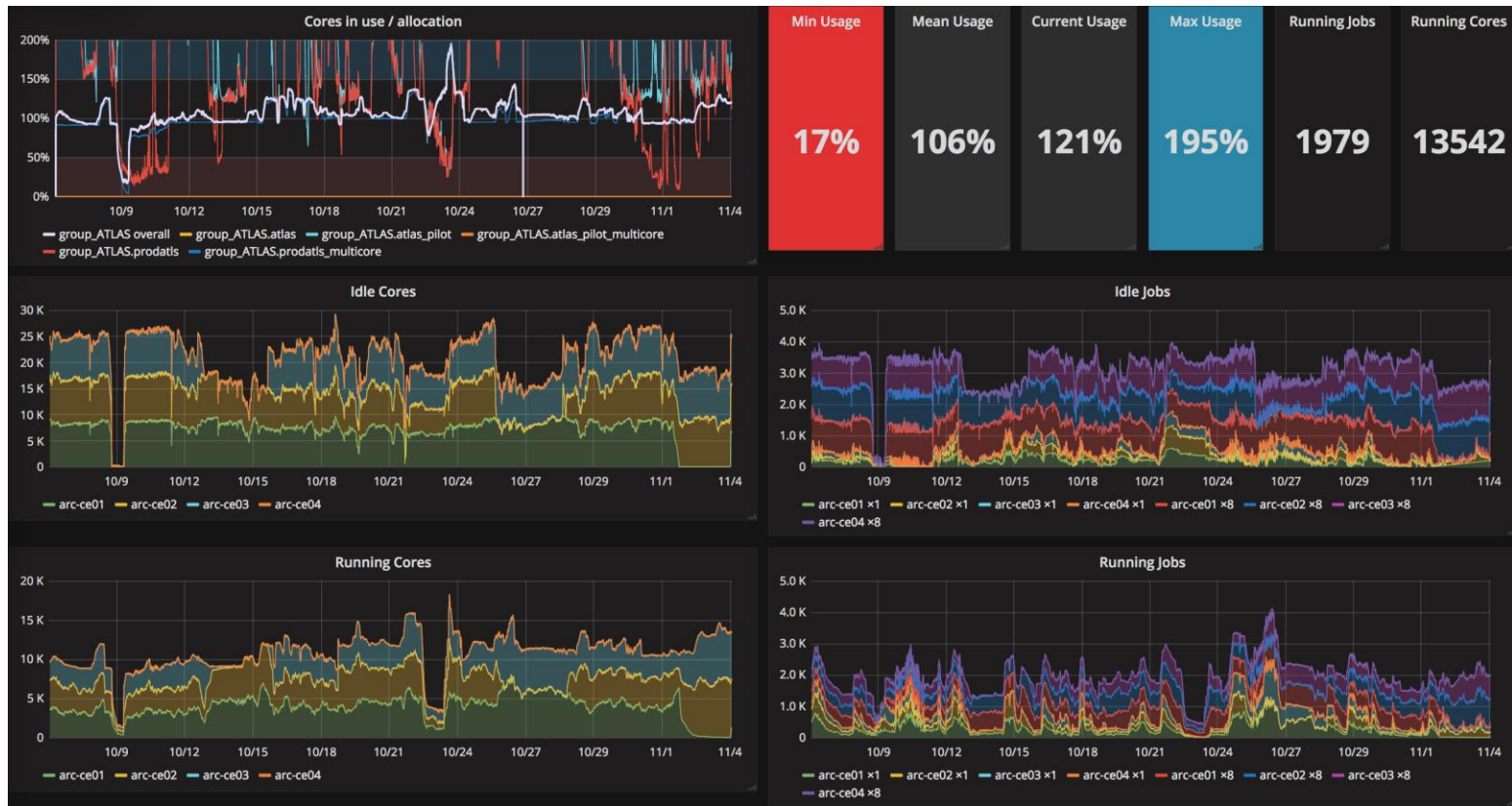
Deployed Capacity

- Allocation for 2018 is 245196 HS06
- Average usable for October was 243905 HS06.
- HPE15 WN have been returned to production.
- Major drain + reboot of nodes on 23rd October for Security patching.



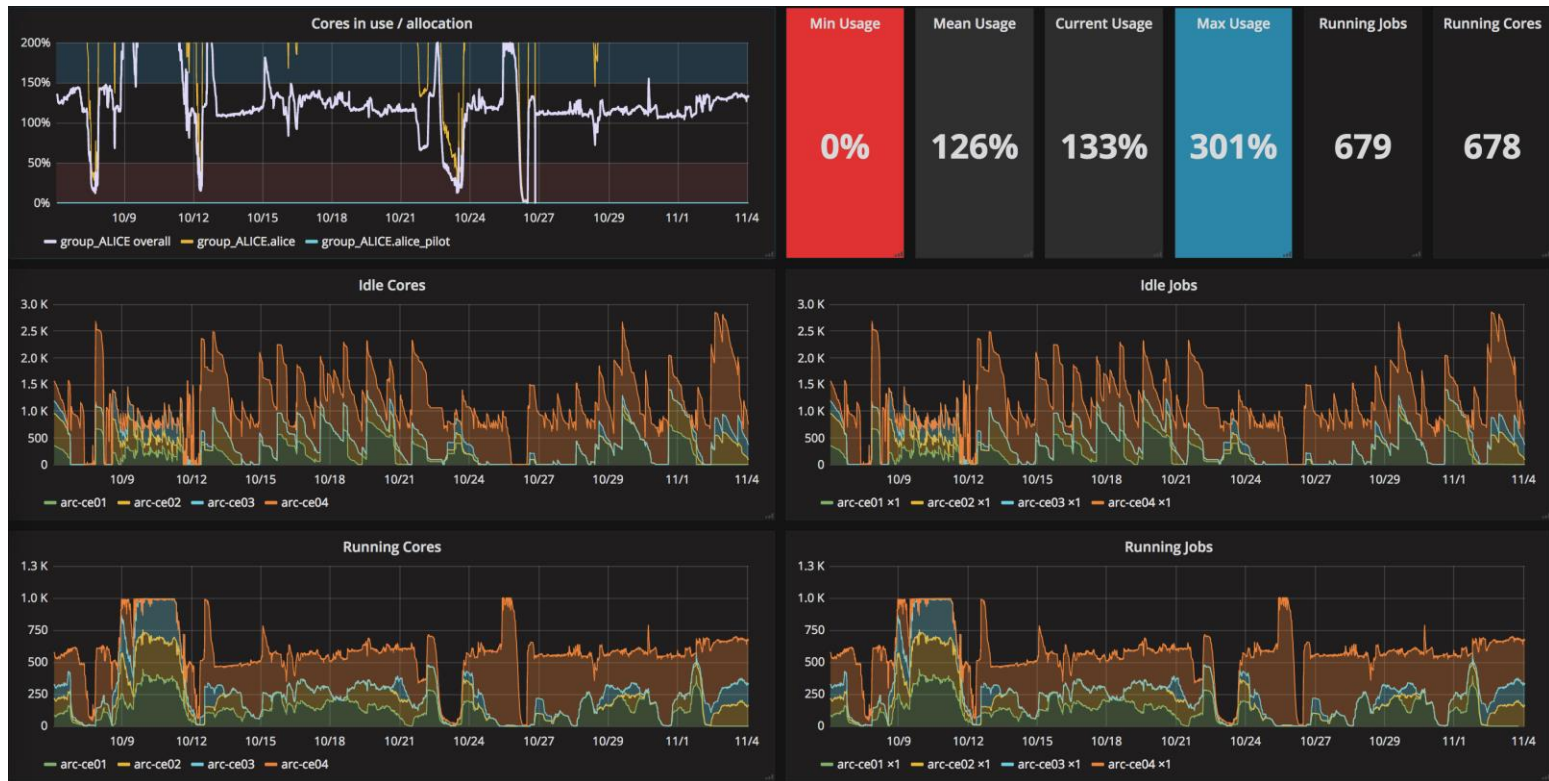
ATLAS

- All OK.



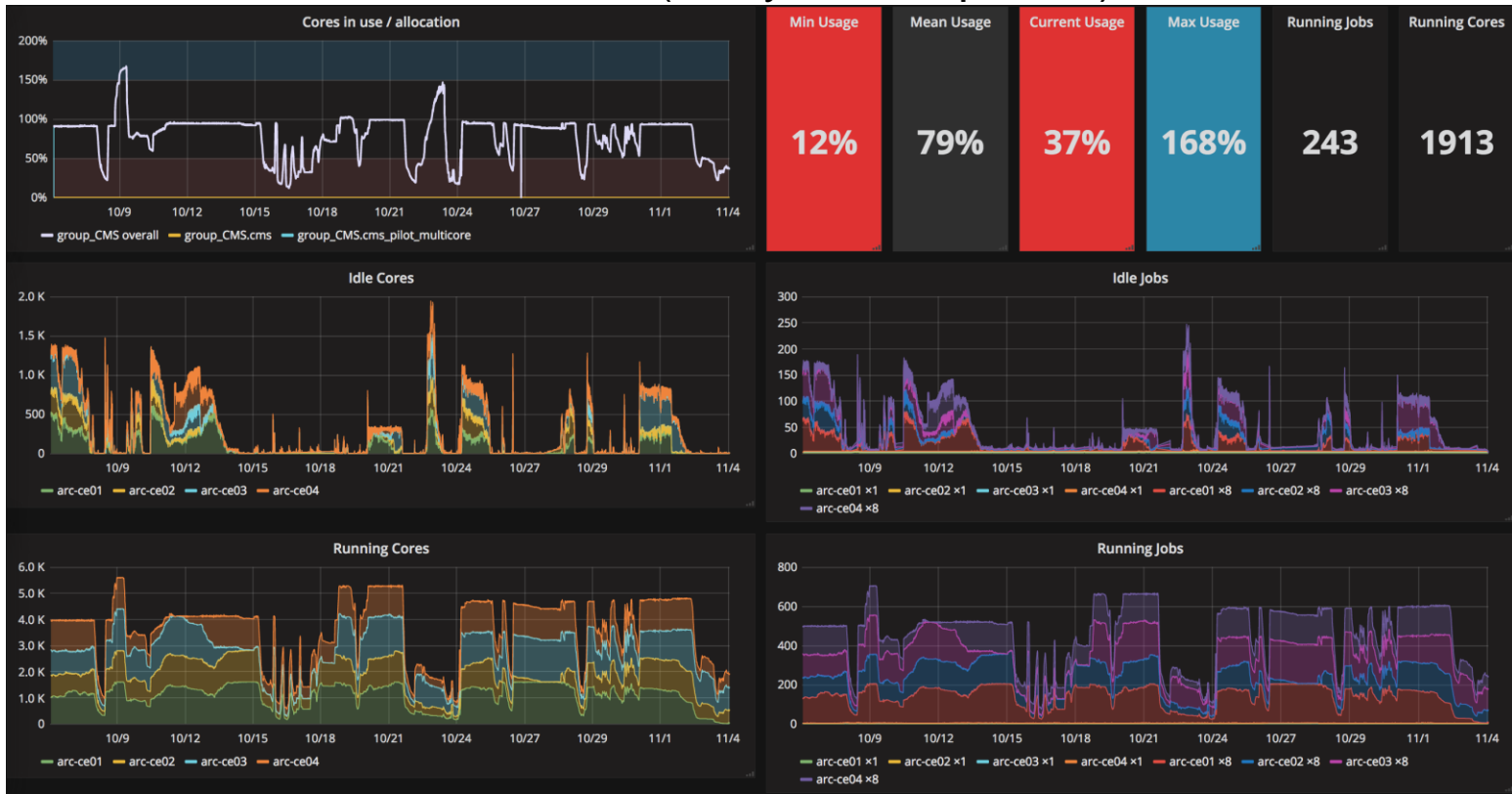
ALICE

- All OK.



CMS

- CMS have have not used their fairshare as they have not submitted enough jobs.
- Central CMS issue (many sites impacted).



LHCb

- All OK.

