

LS2 planning meeting

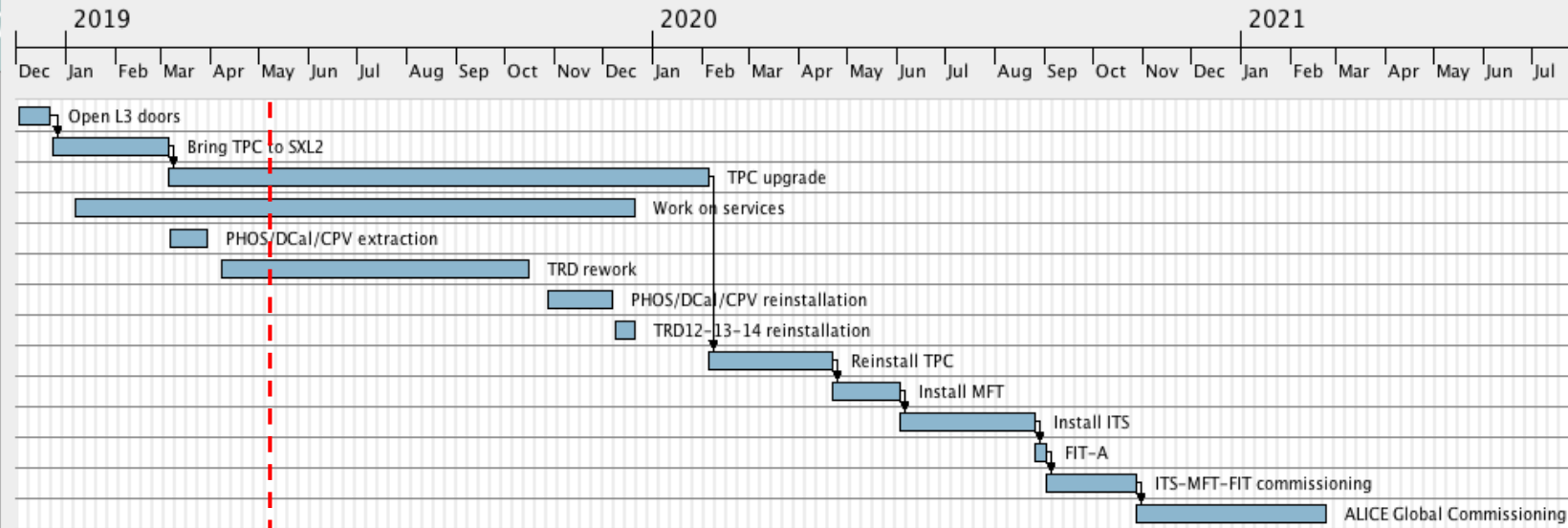
A.Tauro



LS2 master plan

Gantt project

Begin date	End date
3/12/18	21/12/18
24/12/18	5/3/19
6/3/19	4/2/20
7/1/19	20/12/19
7/3/19	29/3/19
8/4/19	15/10/19
28/10/19	6/12/19
9/12/19	20/12/19
5/2/20	21/4/20
22/4/20	2/6/20
3/6/20	25/8/20
26/8/20	1/9/20
2/9/20	27/10/20
28/10/20	22/2/21



EN-EL interventions

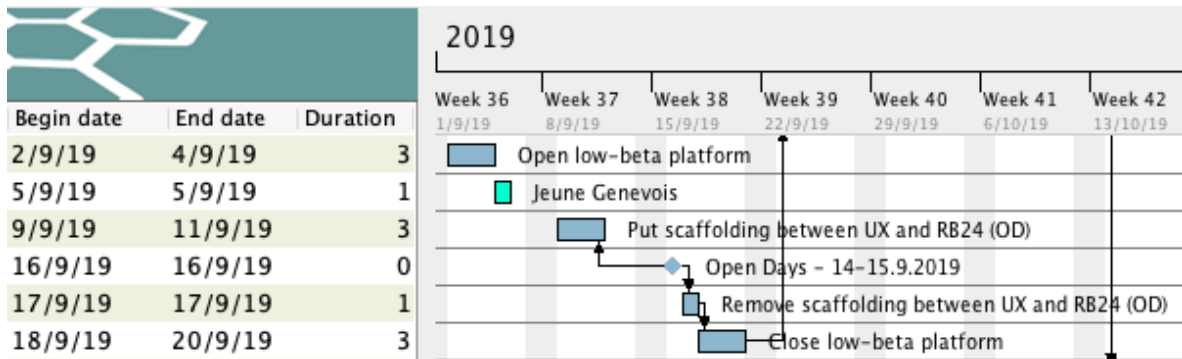
- ~~AUG on Monday 25 March 2019 – no access on site (both surface and underground)~~
- Diesel maintenance: 1 Apr 2019 - Done
- CERN wide 66kV maintenance: 28 May 2019 to 19 July 2019 – reduced consumption (i.e. no magnets)
- Test secours (10 min): 19 Dec 2019 from 8:00 AM to 11:00 AM
- 18kV, 3.3kV and LV network maintenance:
 - Mon 20 to Wed 22 Jan 2020: 3 days no general services - no access on site (both surface and underground)
 - Thu 23 to Fri 24 Jan 2020: 2 days “Limited access” → details being worked out
- AUG on Monday 27 January 2020 - no access on site (both surface and underground)
- Auto transfer test: 27-29 Apr 2020
- BIW test: 5 and 6 Oct 2020 from 18:00 to 00:00 – no access underground

EN-CV interventions

- **Big maintenance:**
 - SF: from Nov 2019 to mid Jan 2020. NO impact on ALICE as both magnets will be OFF.
 - UW: **stop UX mixed water** for 2 days in week 40/2019 (October).
 - SU: various small perturbations + 1 day **stop all cooling UX** + 1 day **stop all cooling SXL2** in week 16/2020 (April).
- **Small maintenance:**
 - UW: from mid Aug 2020 to mid Sep 2020. **Stop mixed water UX** for 1 day in week 37/2020 (September).
 - SF+SU: weeks 45-47/2020: cleaning towers (stop SF 1 week) + 1 day **stop all cooling UX**.
- **Ventilation:**
 - SG2: w7/2019 - Done
 - Gas extraction: w8/2019 - Done
 - UX25 cavern: May 2020 (tbc)
 - MCH and MTG: Apr 2020 (tbc)
 - L3: Apr 2020 (tbc)
 - ITS: Apr 2020 (tbc)
- **Raw water:**
 - Test after Apr 2019. Short interruption (1 day), can be used tap water during the test.

CERN Open Days

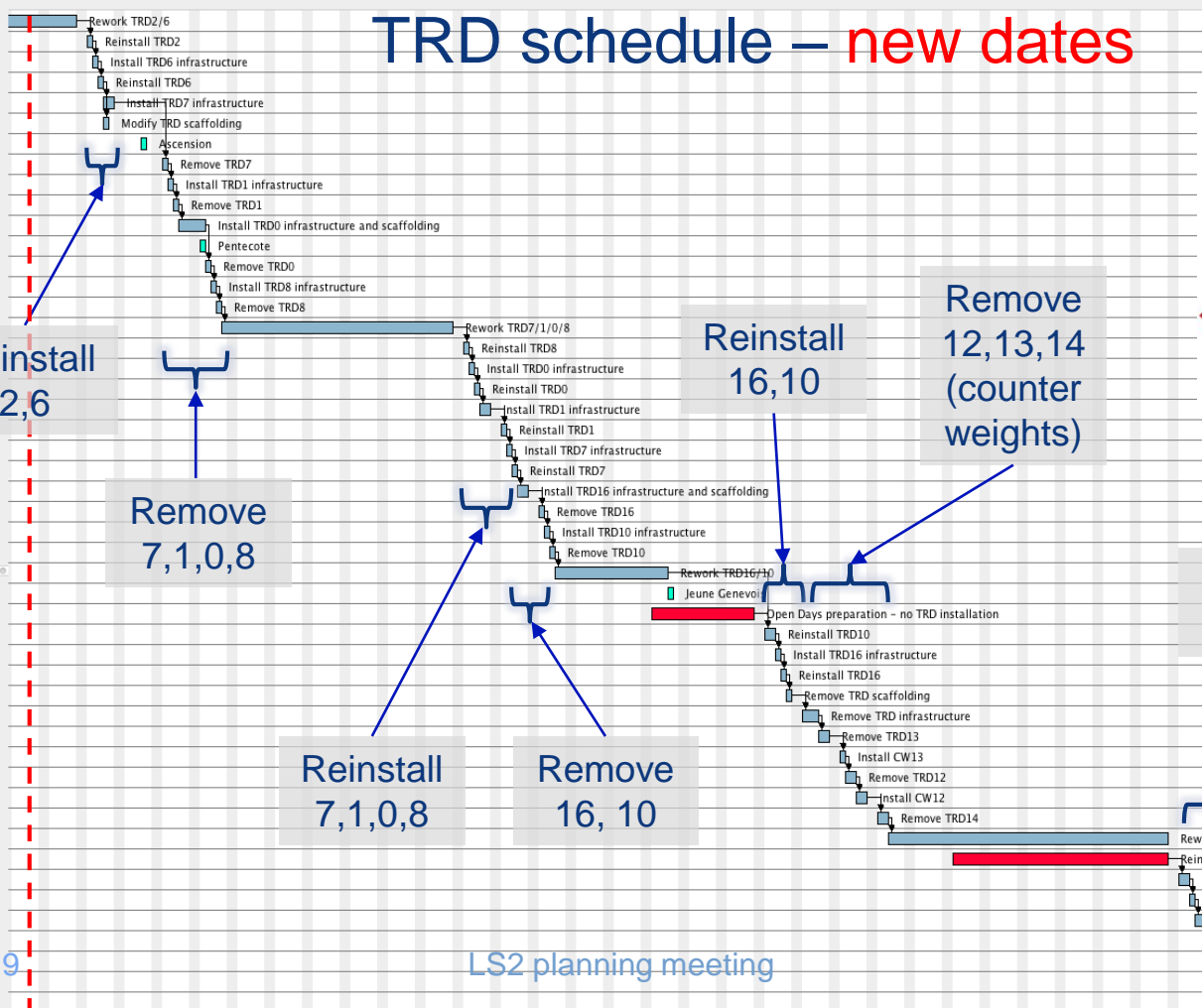
- Sat 14 and Sun 15 September 2019
- Open Low-Beta platform and put scaffolding





TRD schedule – new dates

Begin date	End date	Duration
11/4/19	17/5/19	27
20/5/19	20/5/19	1
21/5/19	21/5/19	1
22/5/19	22/5/19	1
23/5/19	24/5/19	2
23/5/19	23/5/19	1
30/5/19	30/5/19	1
3/6/19	3/6/19	1
4/6/19	4/6/19	1
5/6/19	5/6/19	1
6/6/19	10/6/19	3
10/6/19	10/6/19	1
11/6/19	11/6/19	1
12/6/19	12/6/19	1
13/6/19	13/6/19	1
14/6/19	26/7/19	31
29/7/19	29/7/19	1
30/7/19	30/7/19	1
31/7/19	31/7/19	1
1/8/19	2/8/19	1
5/8/19	5/8/19	1
6/8/19	6/8/19	1
7/8/19	7/8/19	1
8/8/19	9/8/19	2
12/8/19	12/8/19	1
13/8/19	13/8/19	1
14/8/19	14/8/19	1
15/8/19	4/9/19	15
5/9/19	5/9/19	1
2/9/19	20/9/19	15
23/9/19	24/9/19	2
25/9/19	25/9/19	1
26/9/19	26/9/19	1
27/9/19	27/9/19	1
30/9/19	2/10/19	3
3/10/19	4/10/19	2
7/10/19	7/10/19	1
8/10/19	9/10/19	2
10/10/19	11/10/19	2
14/10/19	15/10/19	2
16/10/19	6/12/19	38
28/10/19	6/12/19	30
9/12/19	10/12/19	2
11/12/19	11/12/19	1
12/12/19	13/12/19	2
16/12/19	16/12/19	1
17/12/19	18/12/19	2
19/12/19	20/12/19	2
23/12/19	3/1/20	10



Reinstall 2,6

Remove 7,1,0,8

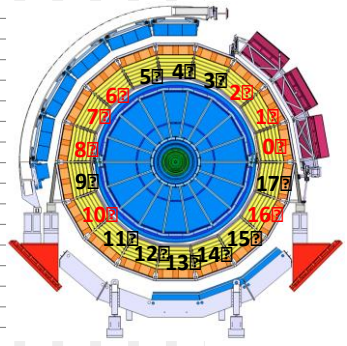
Reinstall 16,10

Remove 12,13,14 (counter weights)

Reinstall 7,1,0,8

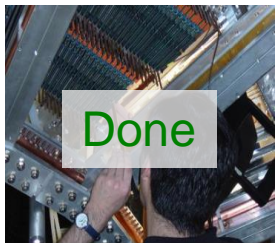
Remove 16, 10

Reinstall 12,13,14



LS2 planning meeting

TPC upgrade sequence



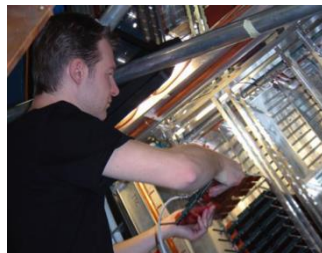
**Remove FEE
outside cleanroom**



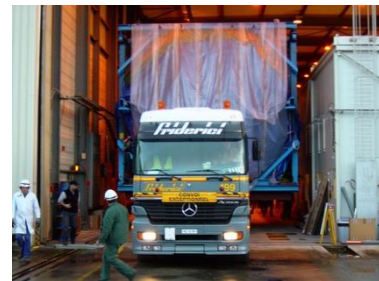
Remove ROC



**Survey, sealing,
OVP test**



**Install new FEC +
test**



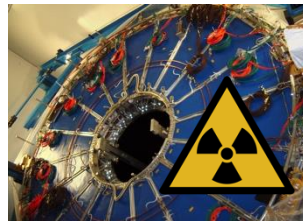
**TPC ready for
transportation**



**TPC in cleanroom
Irradiation tests**



Install new ROC



Irradiation tests

7 Mar '19

5 Apr

24 Apr (A)
1 Jul (C)

10 May (A)
12 Jul (C)

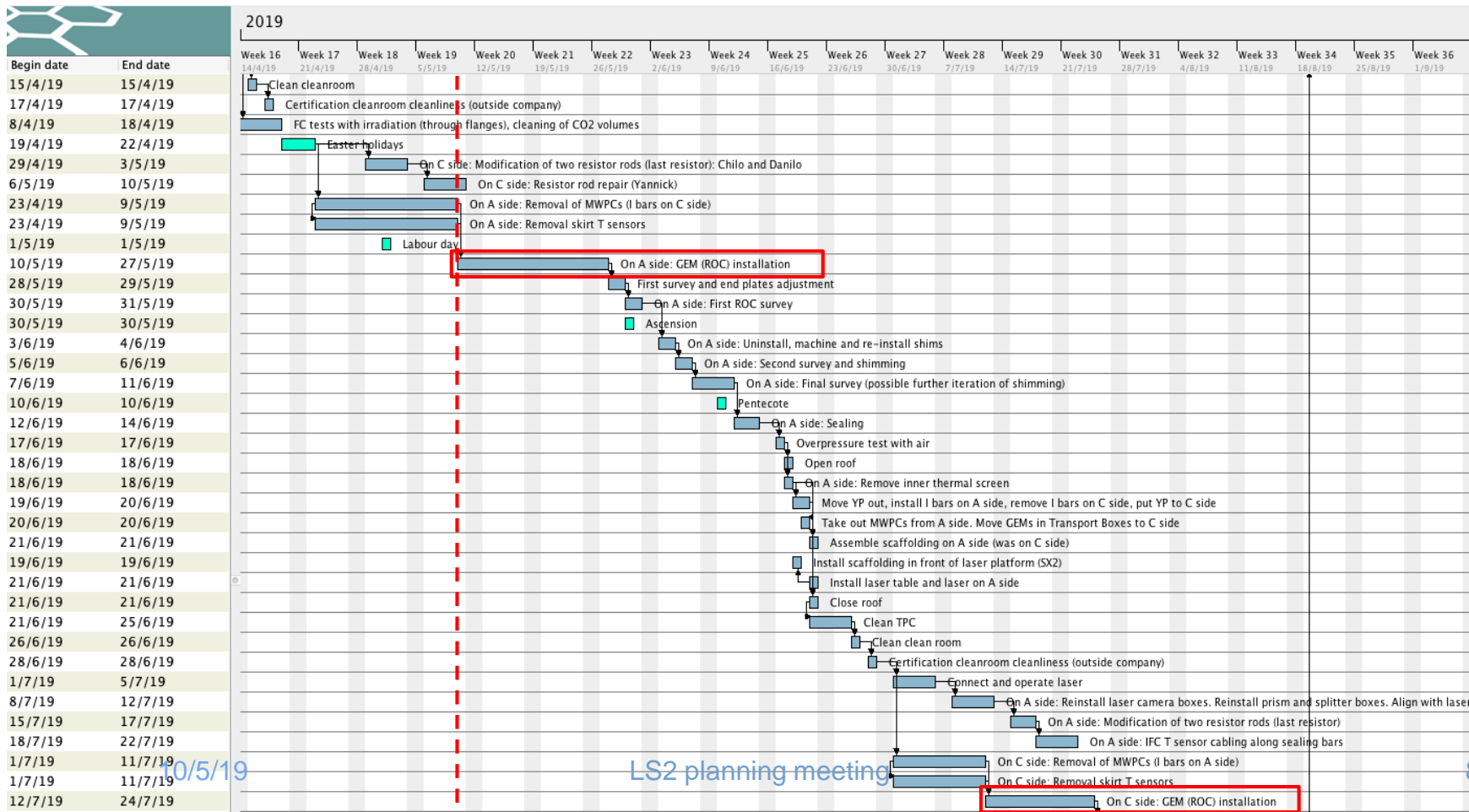
28 May – 17 Jun (A)
23 Jul – 8 Aug (C)

11 Sep (A)
26 Sep (C)

19 Dec

4 Feb '20

TPC schedule – Apr-Jul



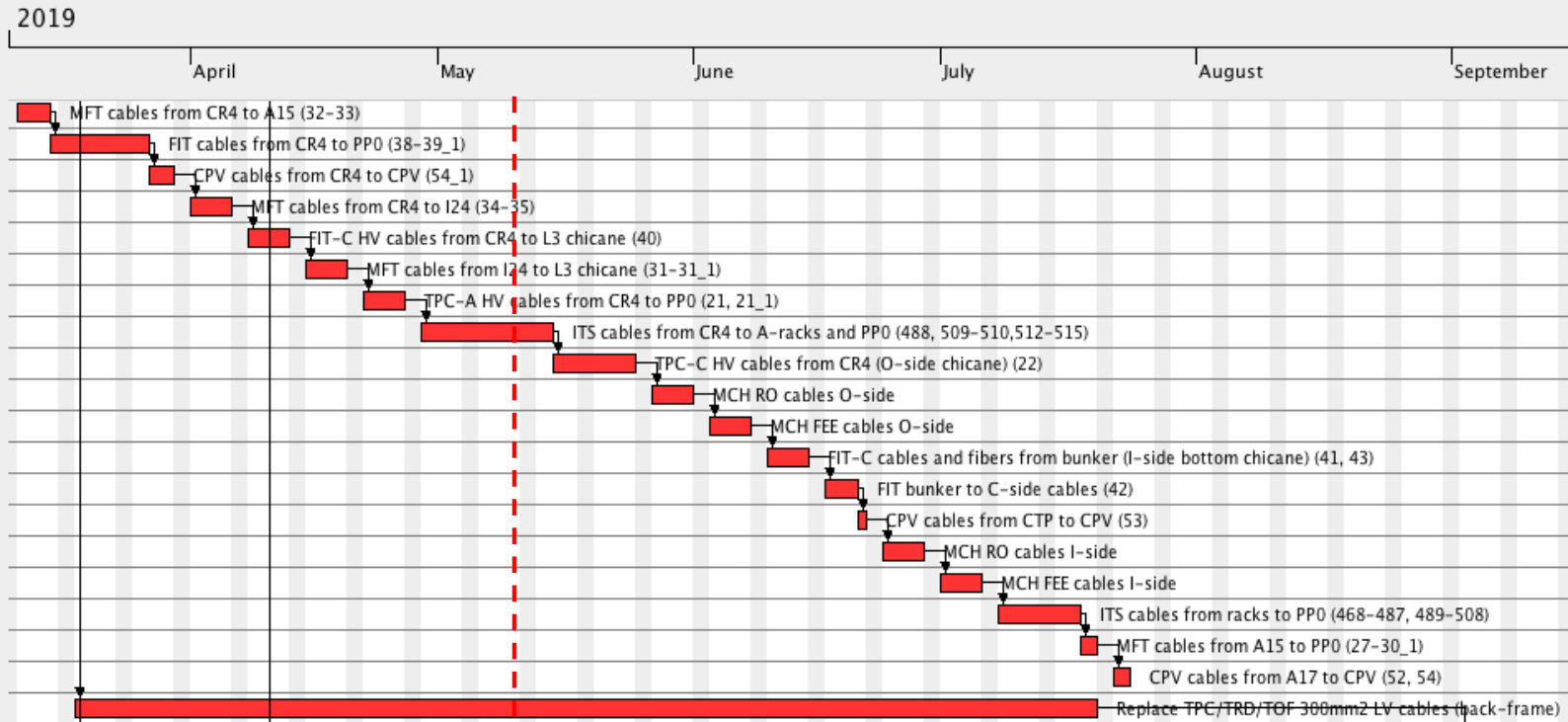
00/5/19

LS2 planning meeting

Copper cables (EN-EA)



Begin date	End date	Dura...
11/3/19	14/3/19	4
15/3/19	26/3/19	8
27/3/19	29/3/19	3
1/4/19	5/4/19	5
8/4/19	12/4/19	5
15/4/19	19/4/19	5
22/4/19	26/4/19	5
29/4/19	14/5/19	12
15/5/19	24/5/19	8
27/5/19	31/5/19	5
3/6/19	7/6/19	5
10/6/19	14/6/19	5
17/6/19	20/6/19	4
21/6/19	21/6/19	1
24/6/19	28/6/19	5
1/7/19	5/7/19	5
8/7/19	17/7/19	8
18/7/19	19/7/19	2
22/7/19	23/7/19	2
18/3/19	19/7/19	90



Copper cable - status

ALICE LS2 - EN-EA cabling control follow-up



Copper cables – dates completion connectors + test (EN-EA)

Cavern:

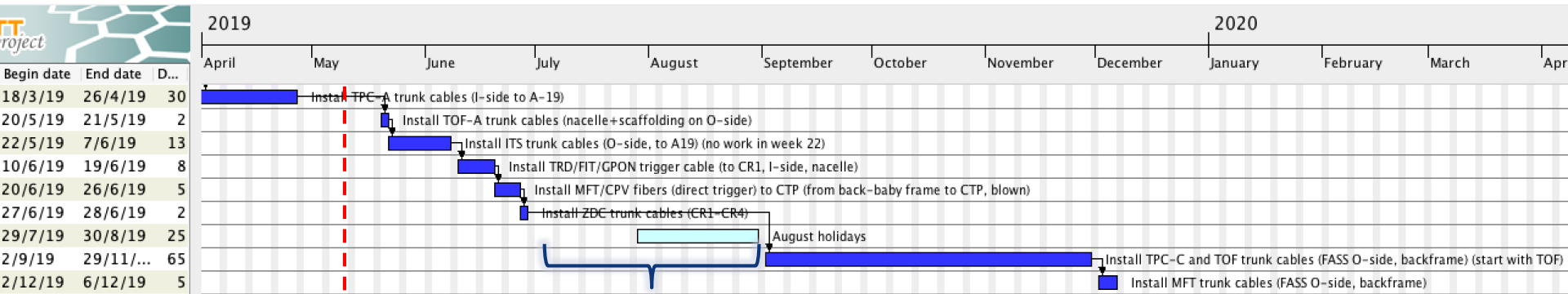
- TPC : 29/10/2019
- ITS : 19/11/2019
- MFT : 27/11/2019
- FIT : 3/12/2019
- CPV : 21/10/2019
- MCH : 10/07/2019

This is a proposal, please check these dates

Miniframe:

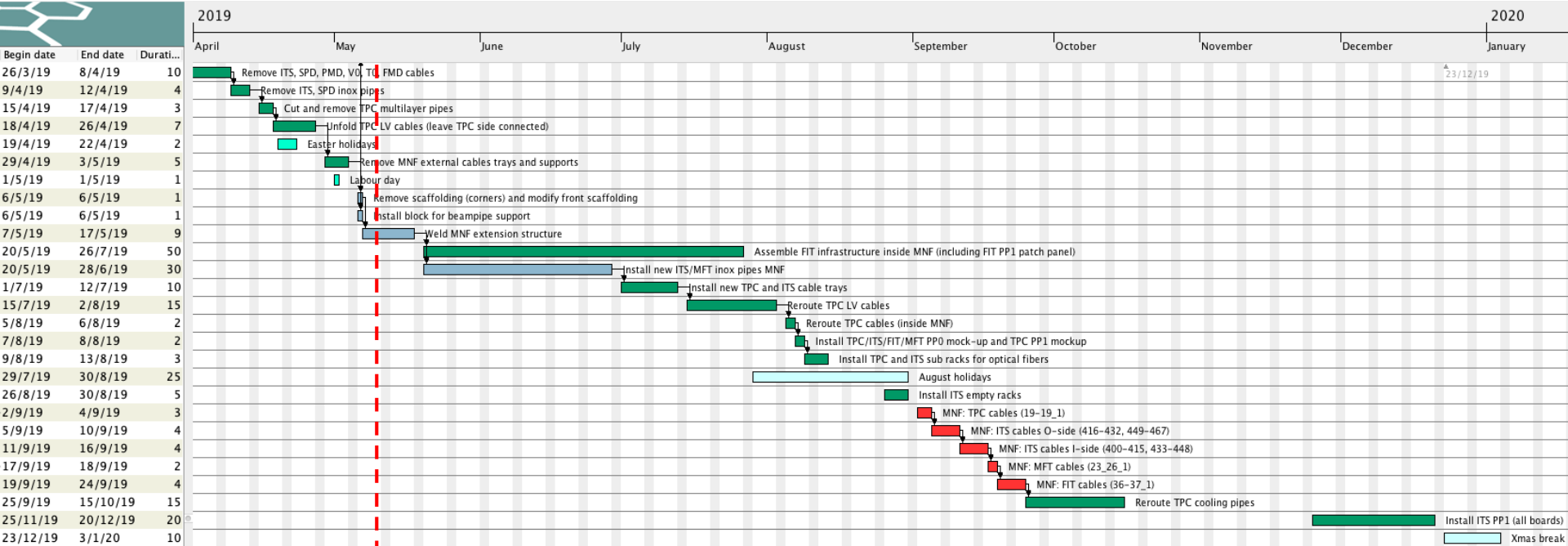
- TPC : 03/02/2020
- ITS : 04/03/2020
- MFT : 11/03/2020
- FIT : 03/03/2020

Optical fibers (EN-EL)

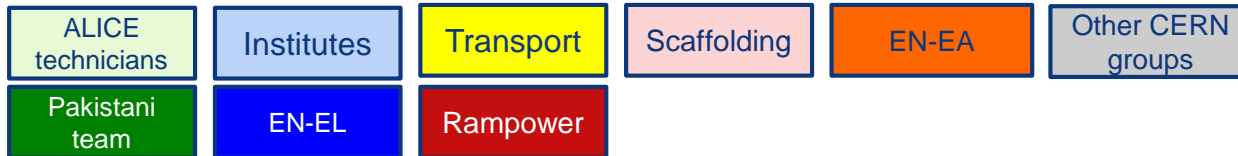


Pause in July-August to avoid co-activity with LV cables replacement (backframe)

Miniframe planning



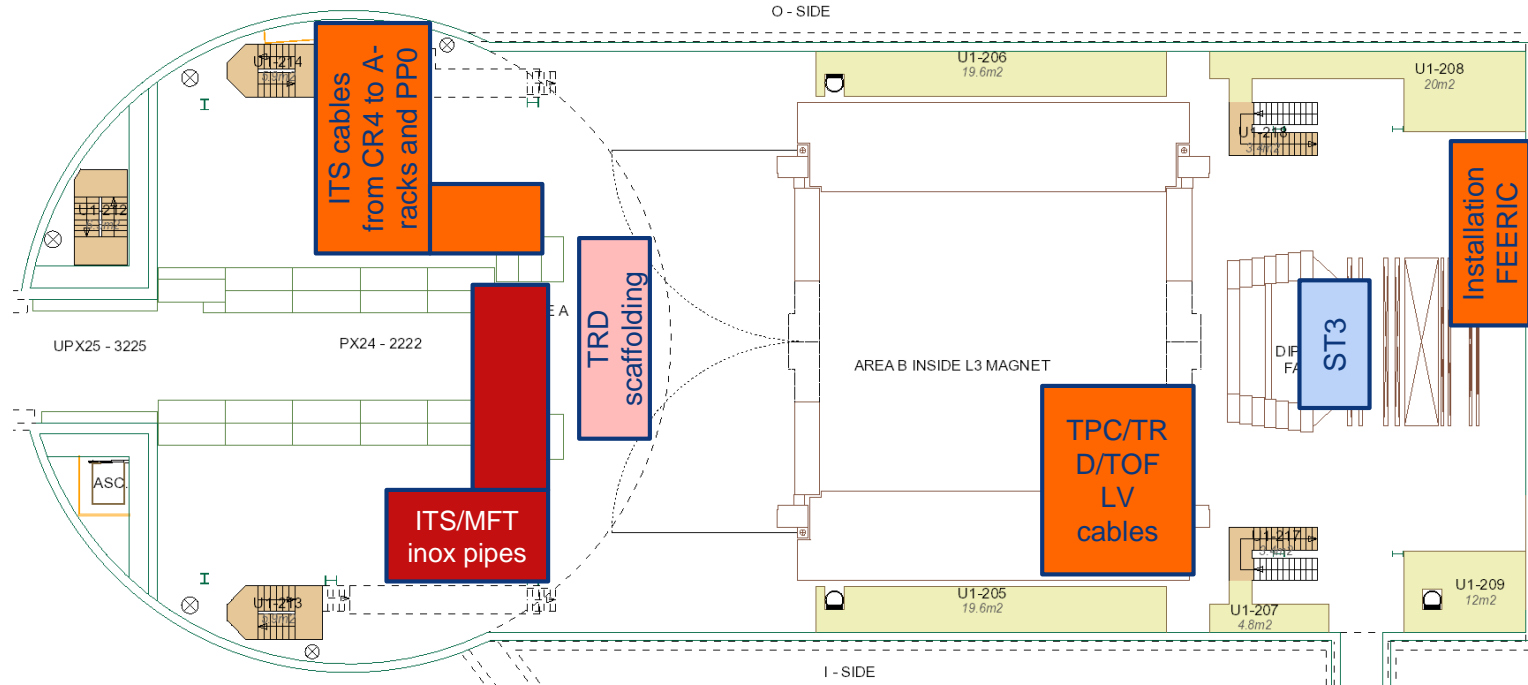
Day-by-day sequence w18



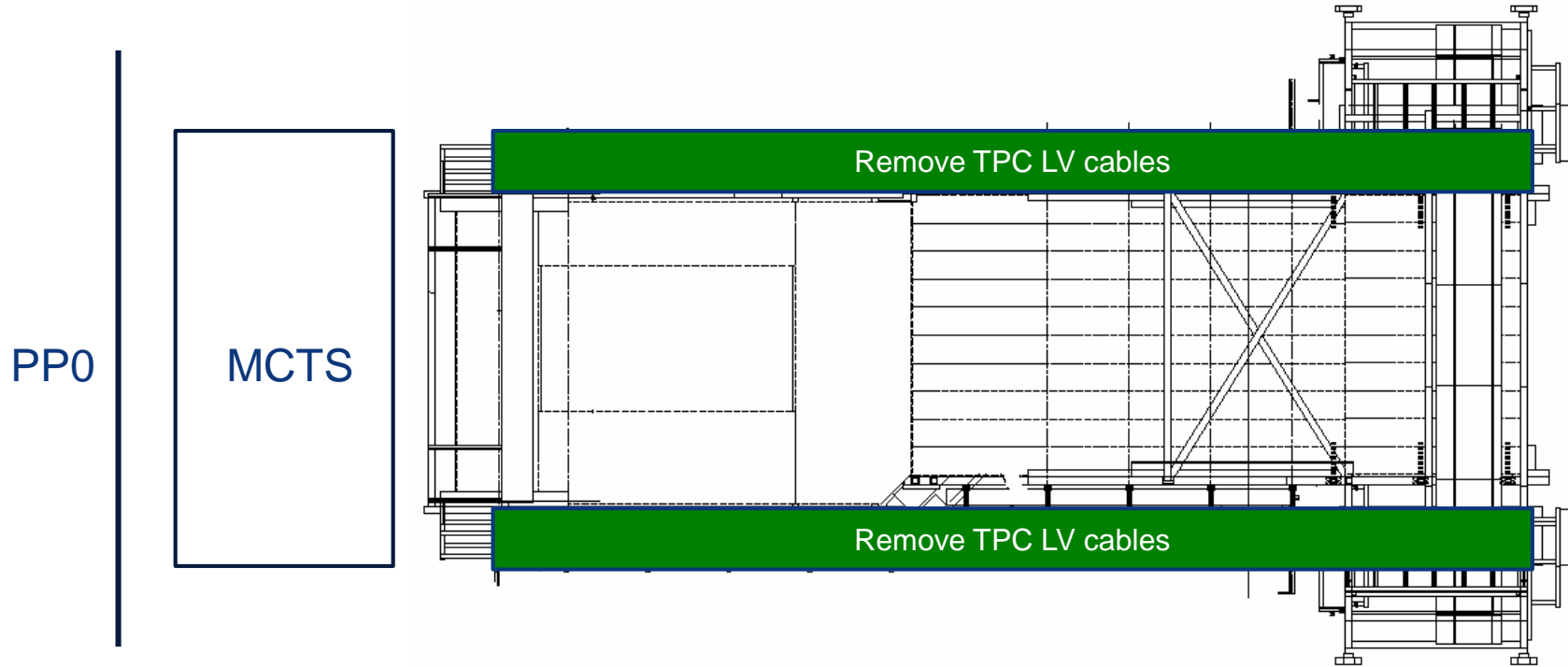
UX25 activities w18 – Mon 29 Apr 2019

ALTEAD: maintenance P2 cranes (whole week)

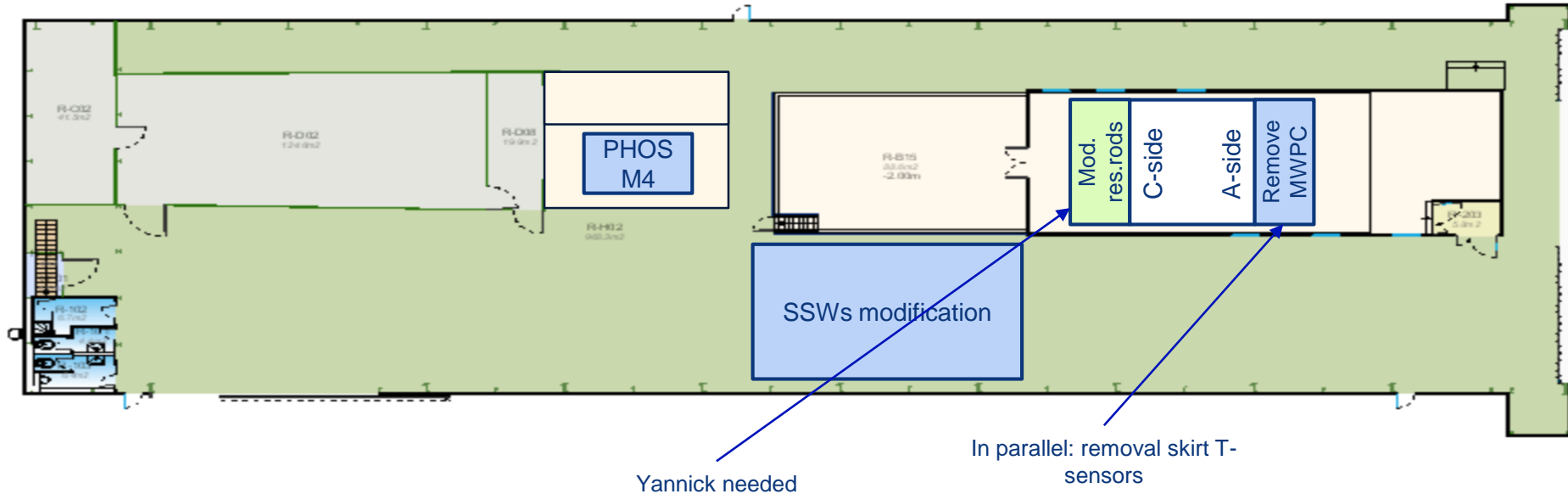
Survey network measurement (whole week)



Miniframe activities w18 – Mon 29 Apr 2019

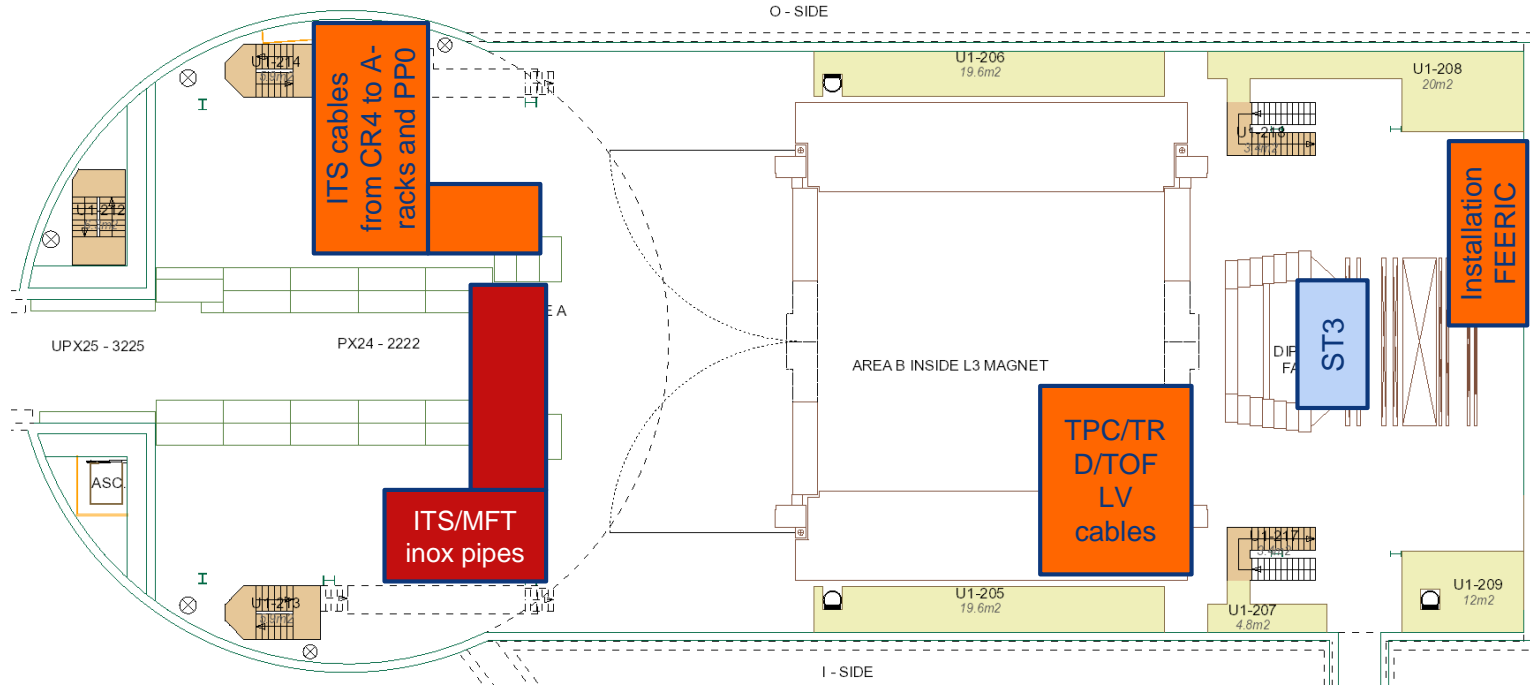


SXL2 activities w18 – Mon 29 Apr 2019

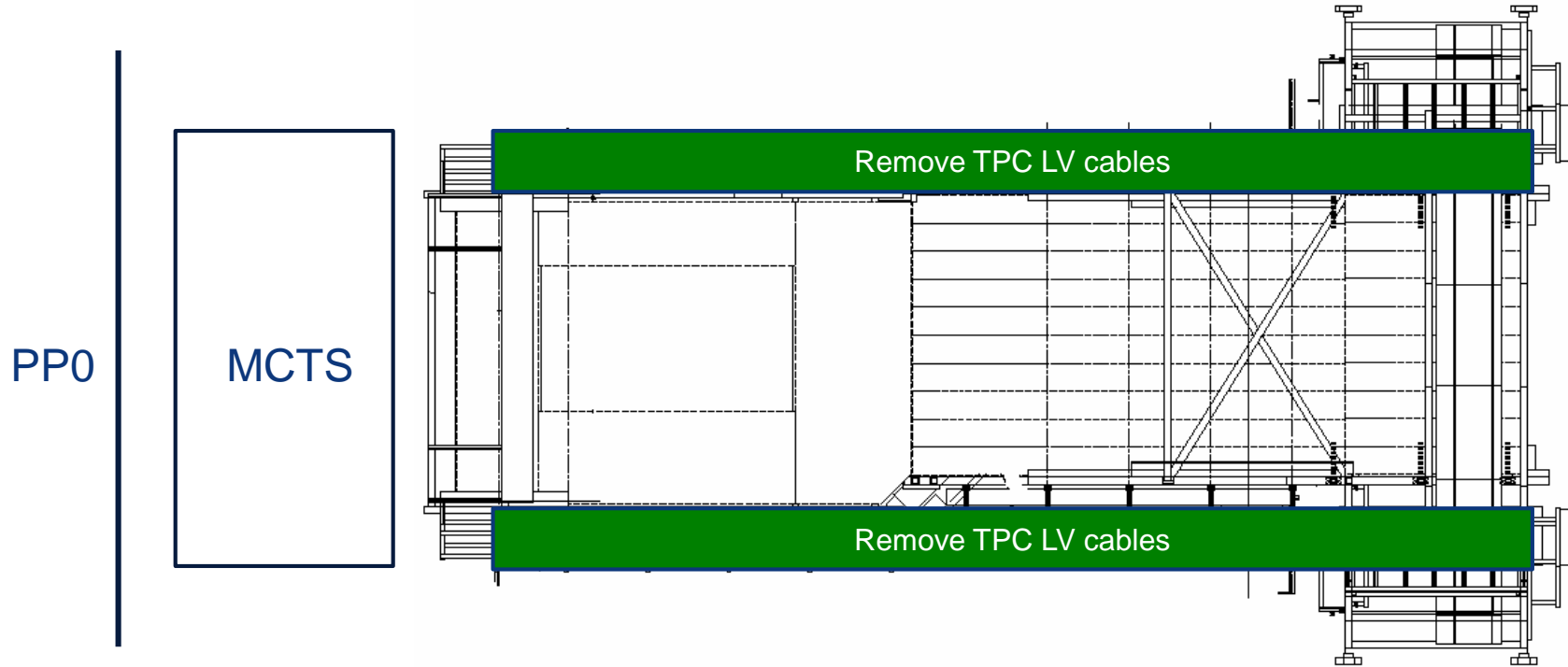


UX25 activities w18 – Tue 30 Apr 2019

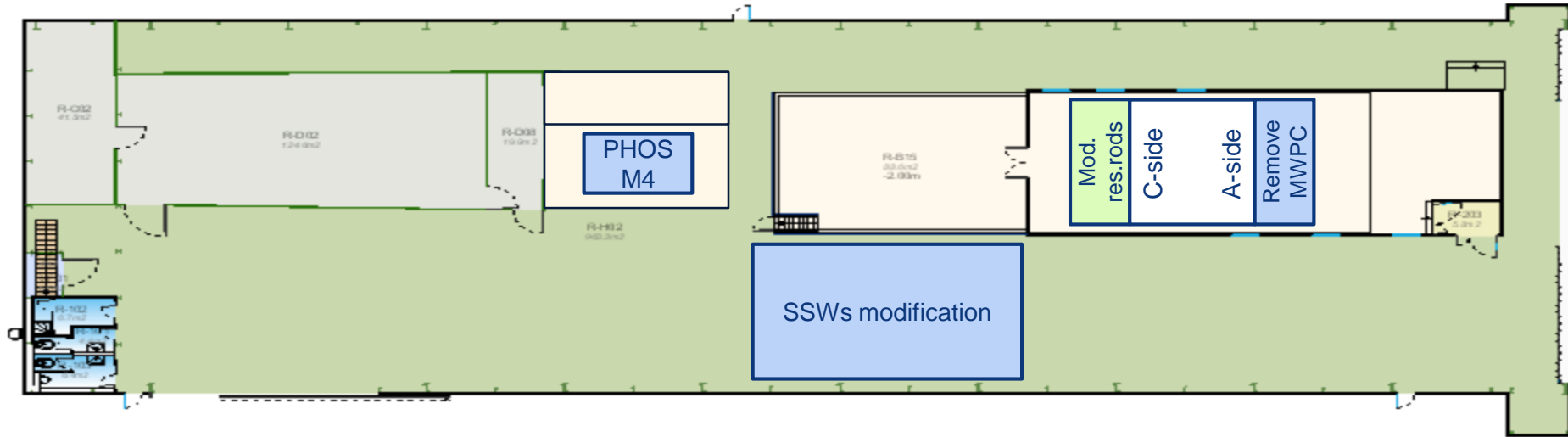
Test CR1-2-3 draw bridges



Miniframe activities w18 – Tue 30 Apr 2019



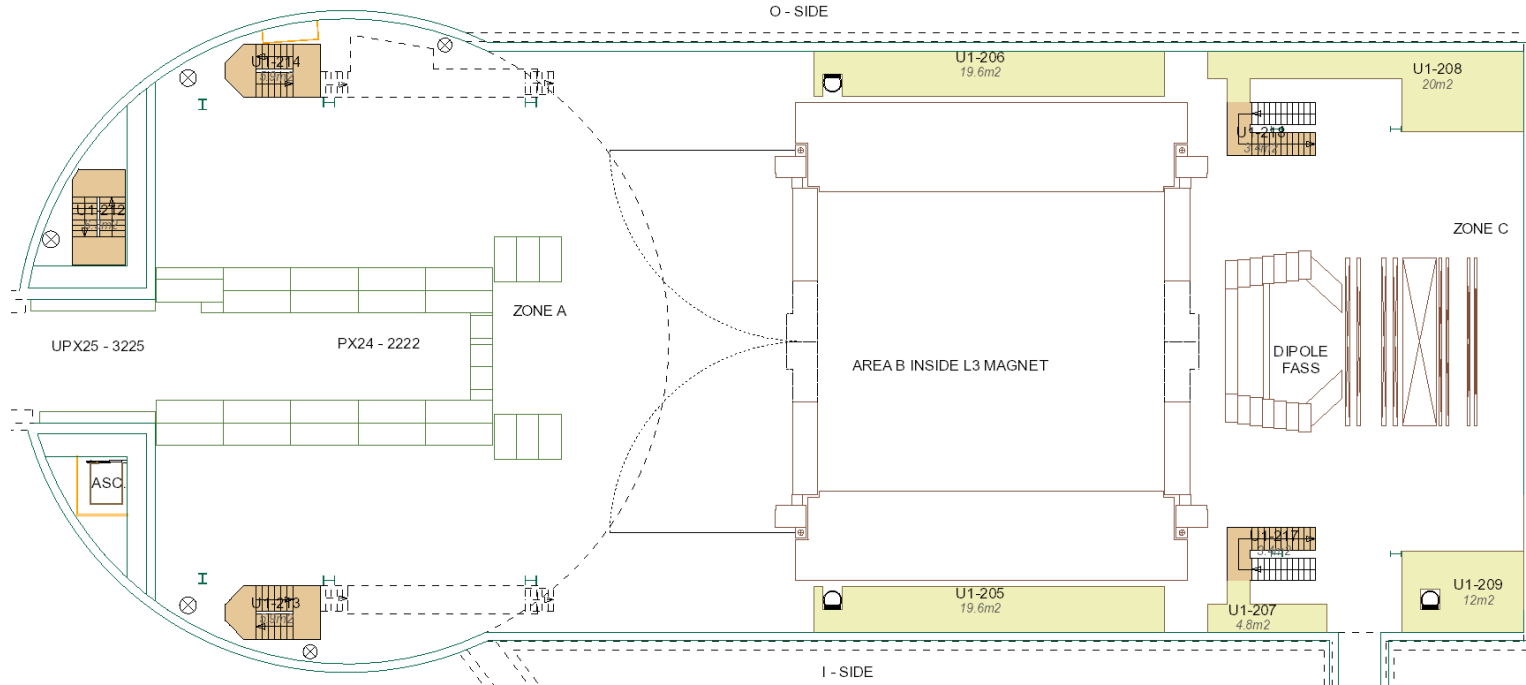
SXL2 activities w18 – Tue 30 Apr 2019



UX25 activities w18 – Wed 1 May 2019

CERN official holiday

Ouvaroff: remove 'park a echafaudage' P2

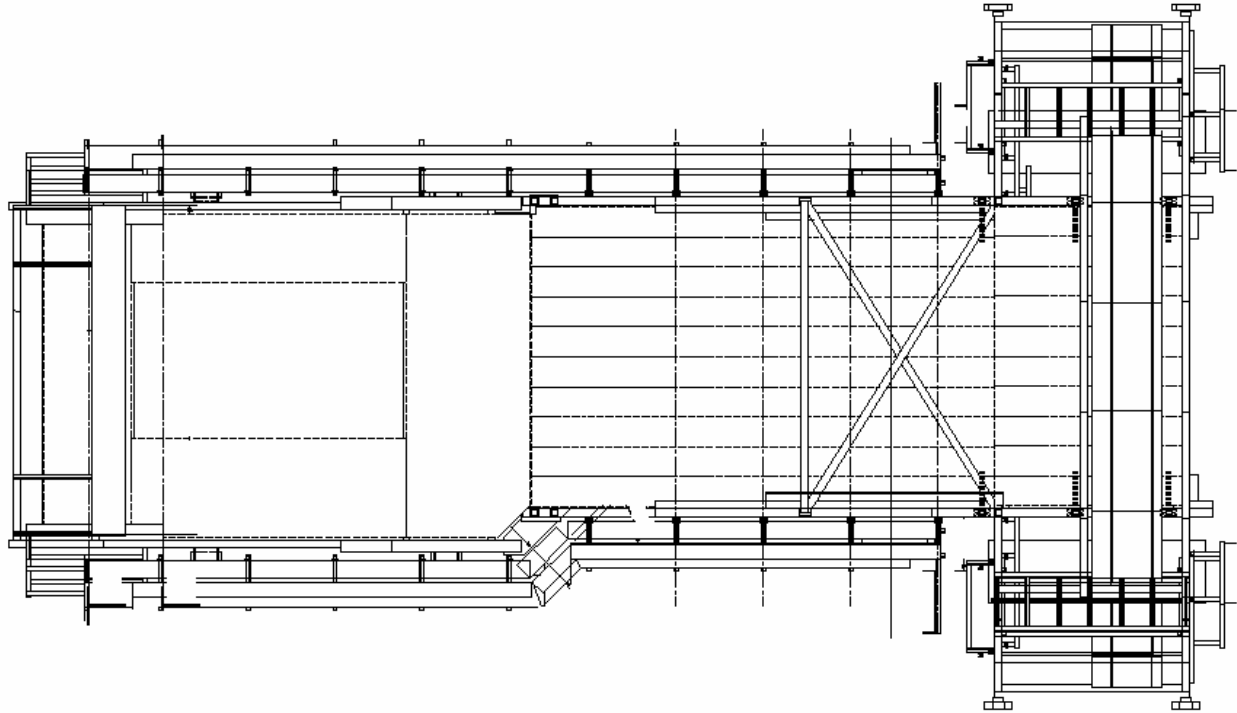


Miniframe activities w18 – Wed 1 May 2019

CERN official holiday

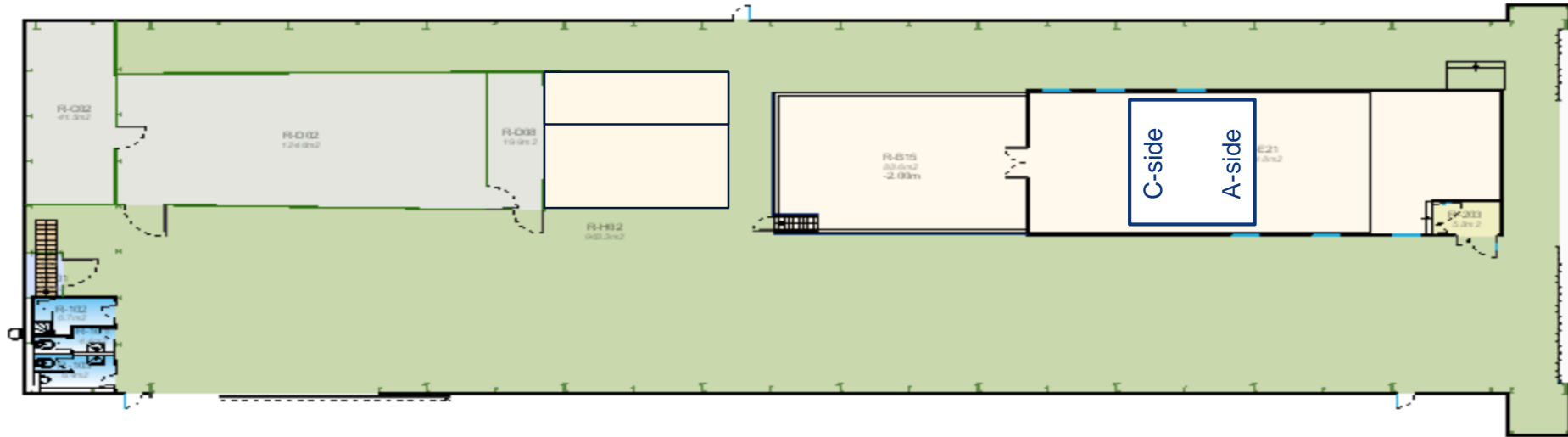
PP0

MCTS

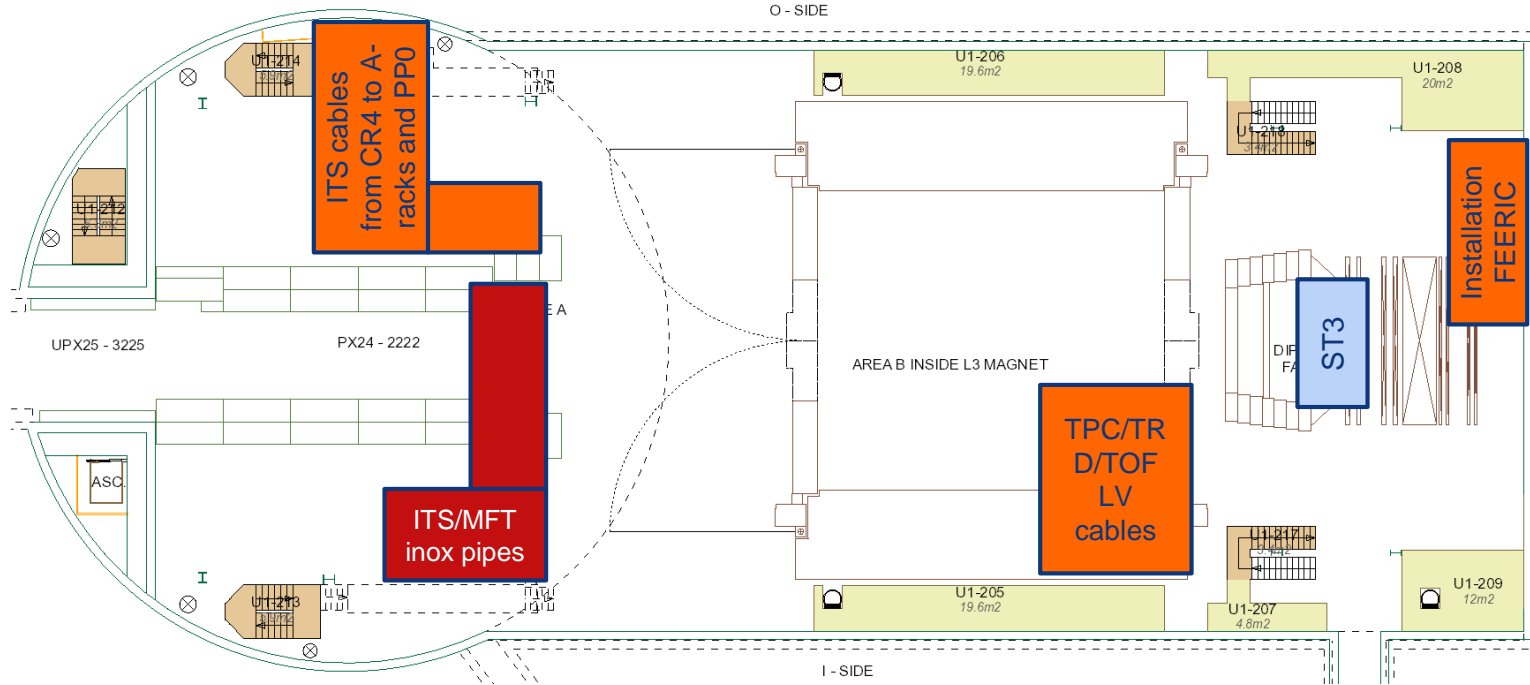


SXL2 activities w18 – Wed 1 May 2019

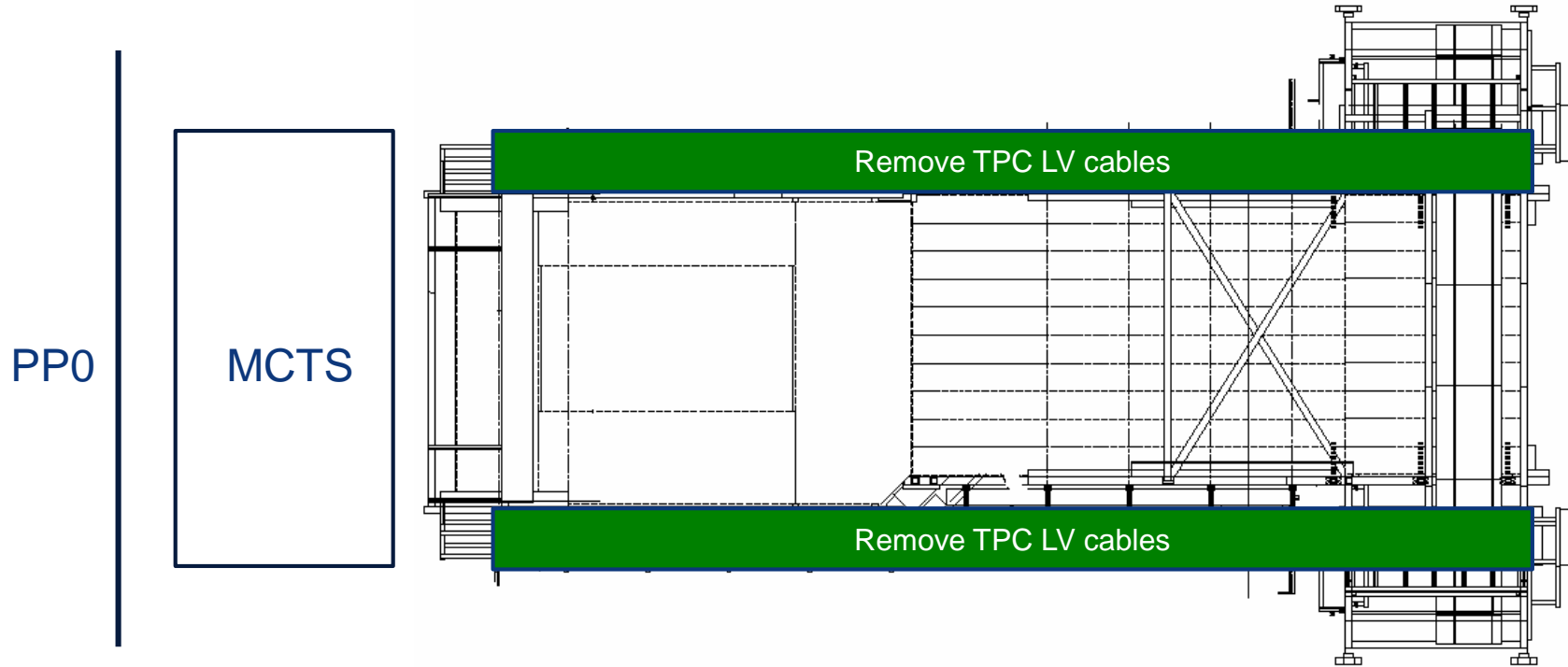
CERN official holiday



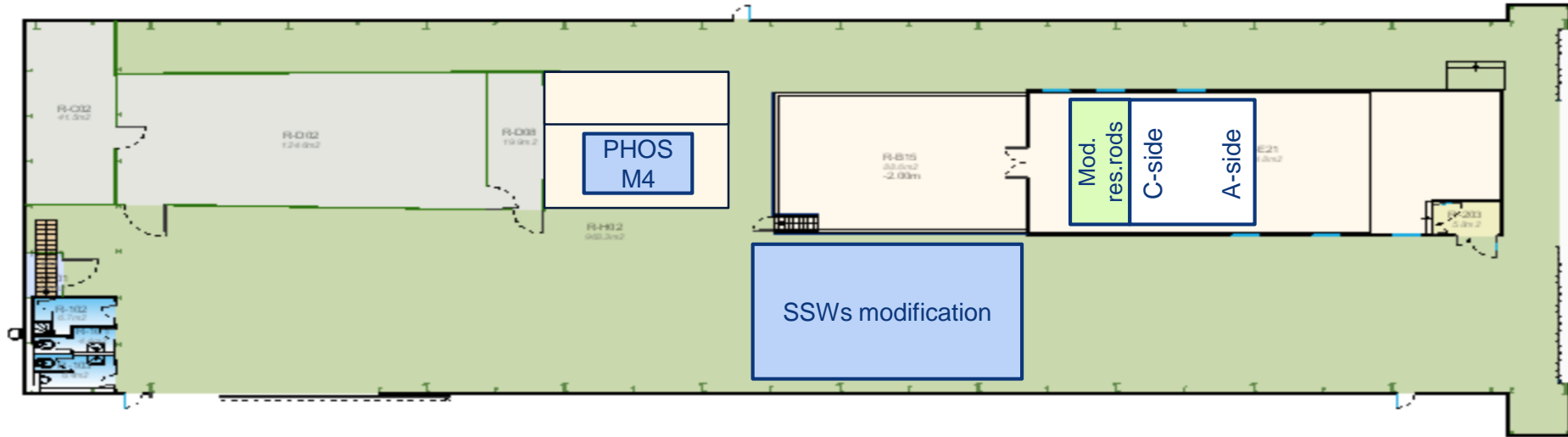
UX25 activities w18 – Thu 2 May 2019



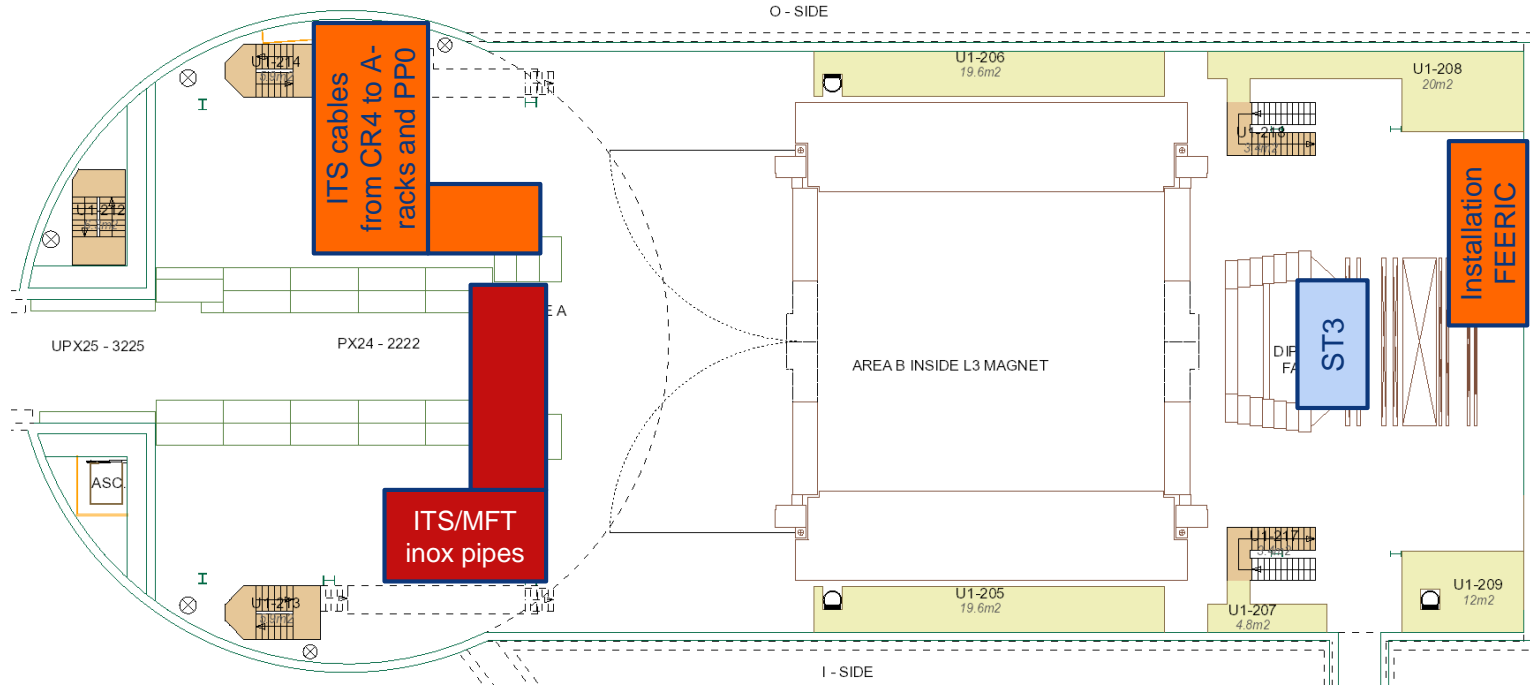
Miniframe activities w18 – Thu 2 May 2019



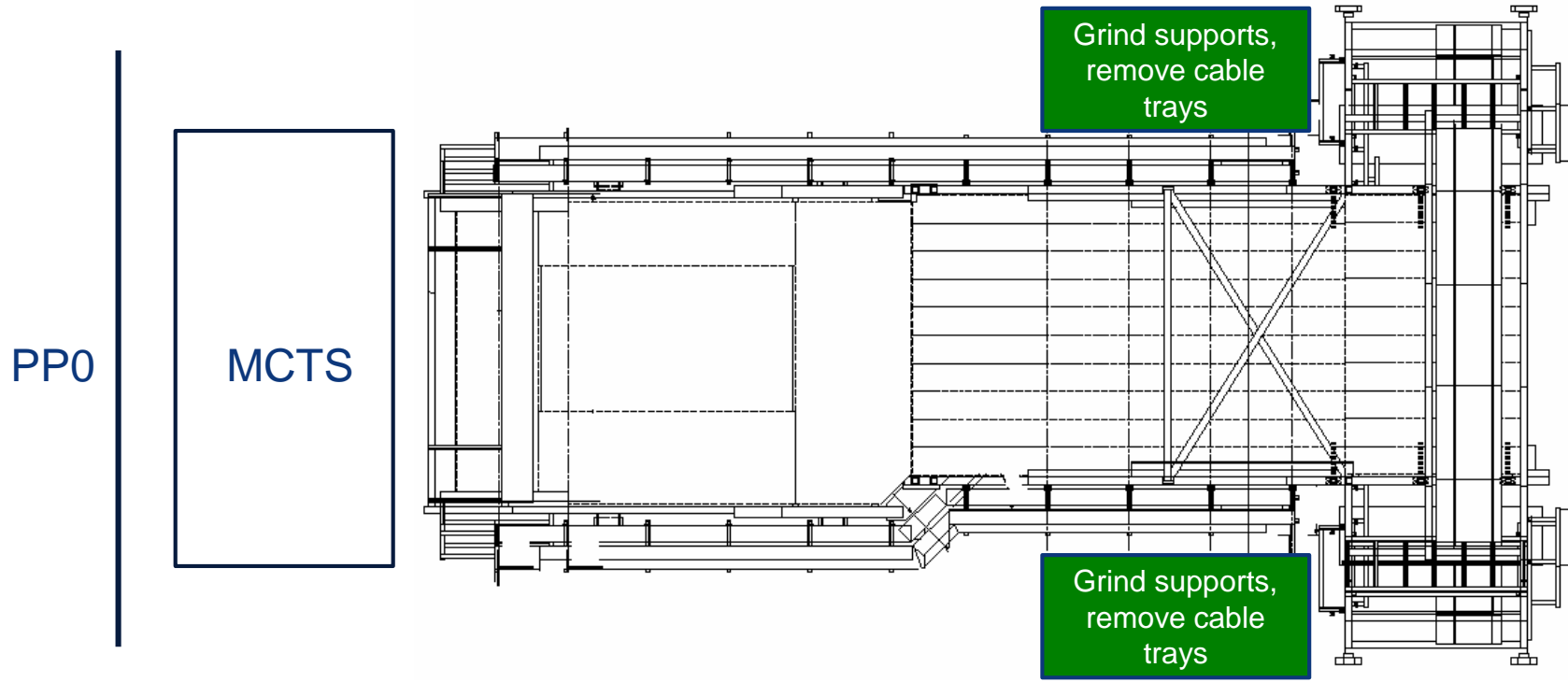
SXL2 activities w18 – Thu 2 May 2019



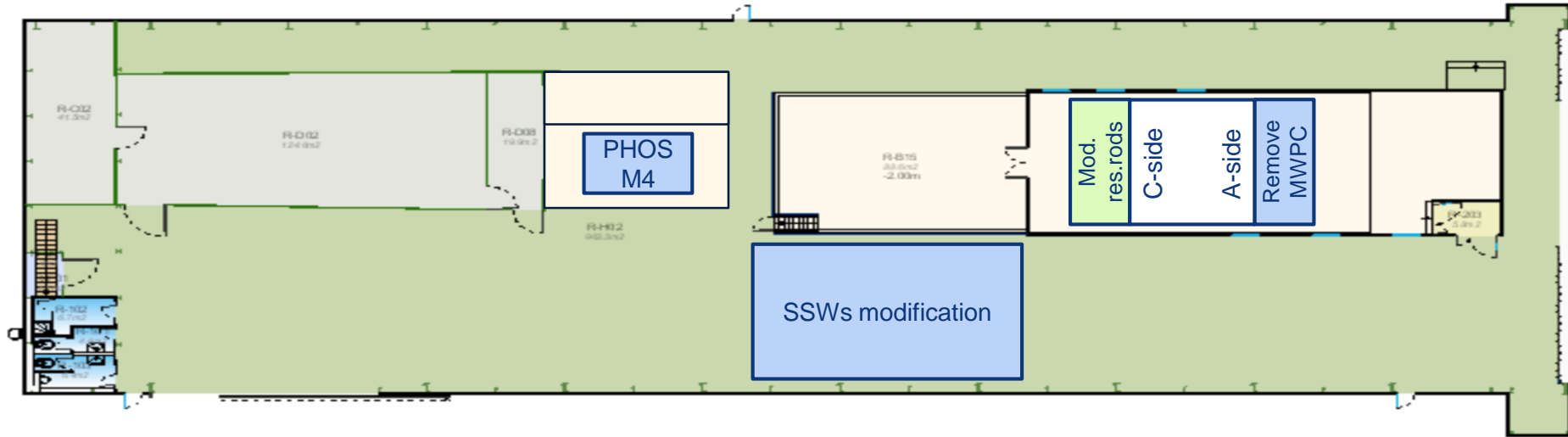
UX25 activities w18 – Fri 3 May 2019



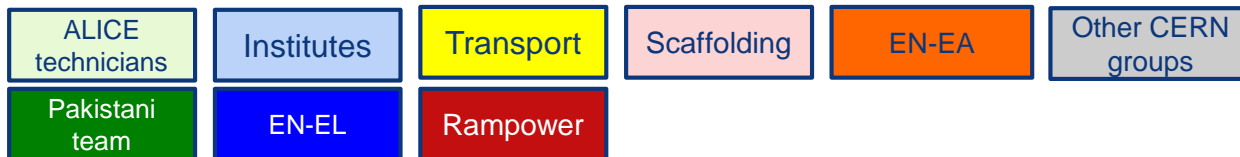
Miniframe activities w18 – Fri 3 May 2019



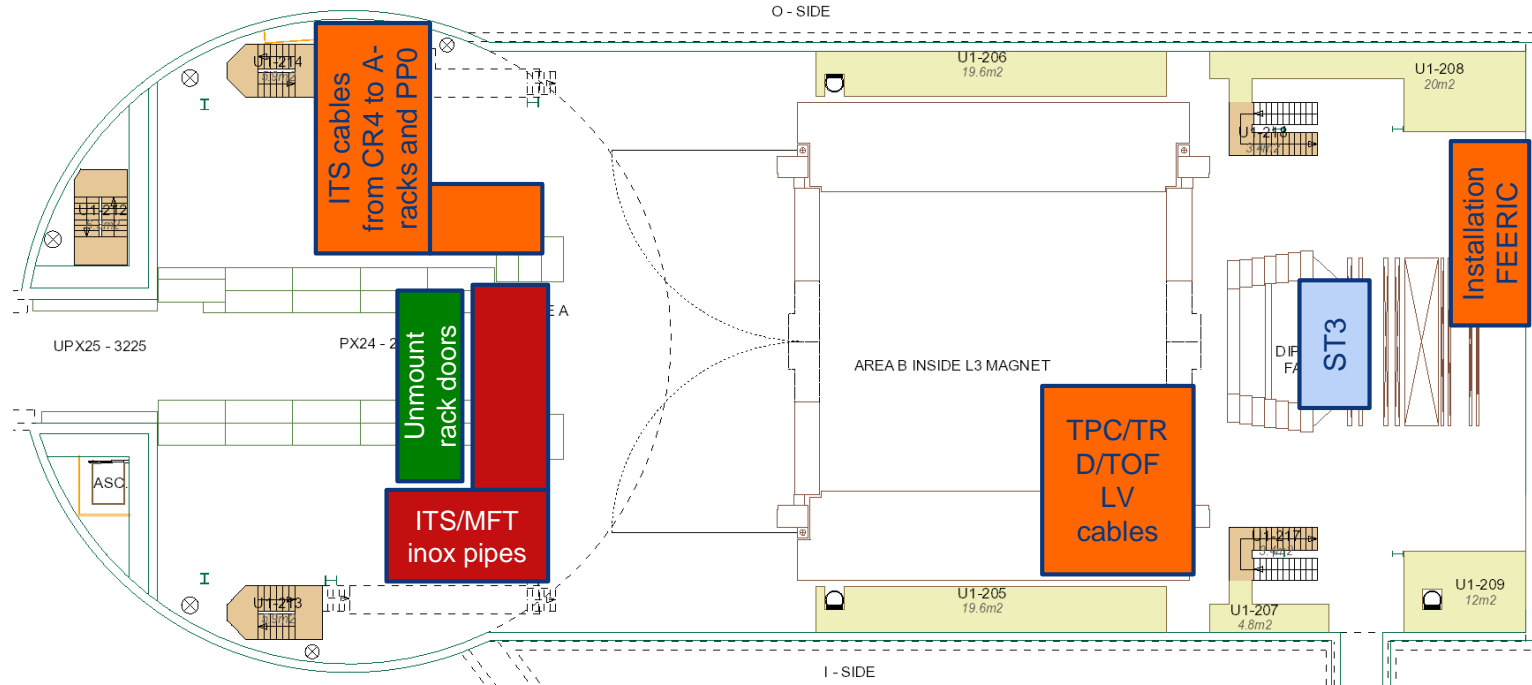
SXL2 activities w18 – Fri 3 May 2019



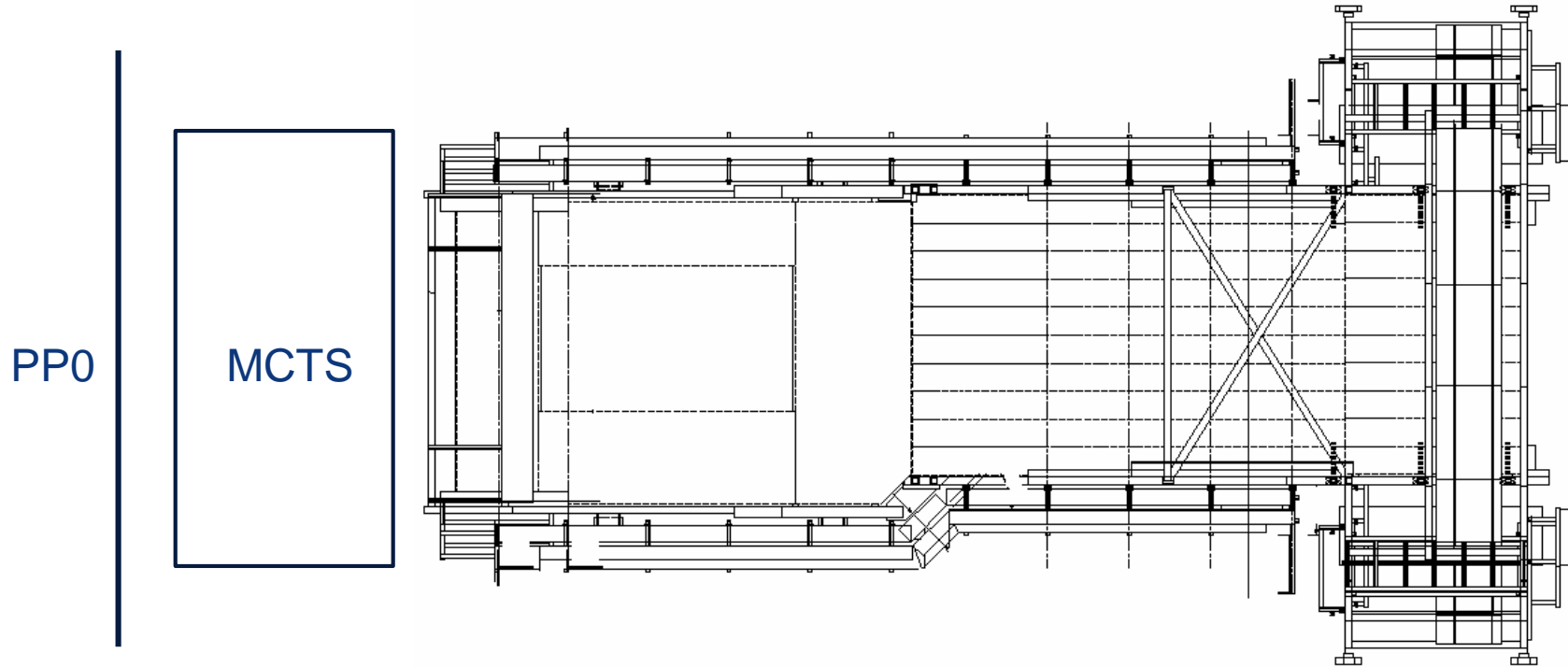
Day-by-day sequence w19



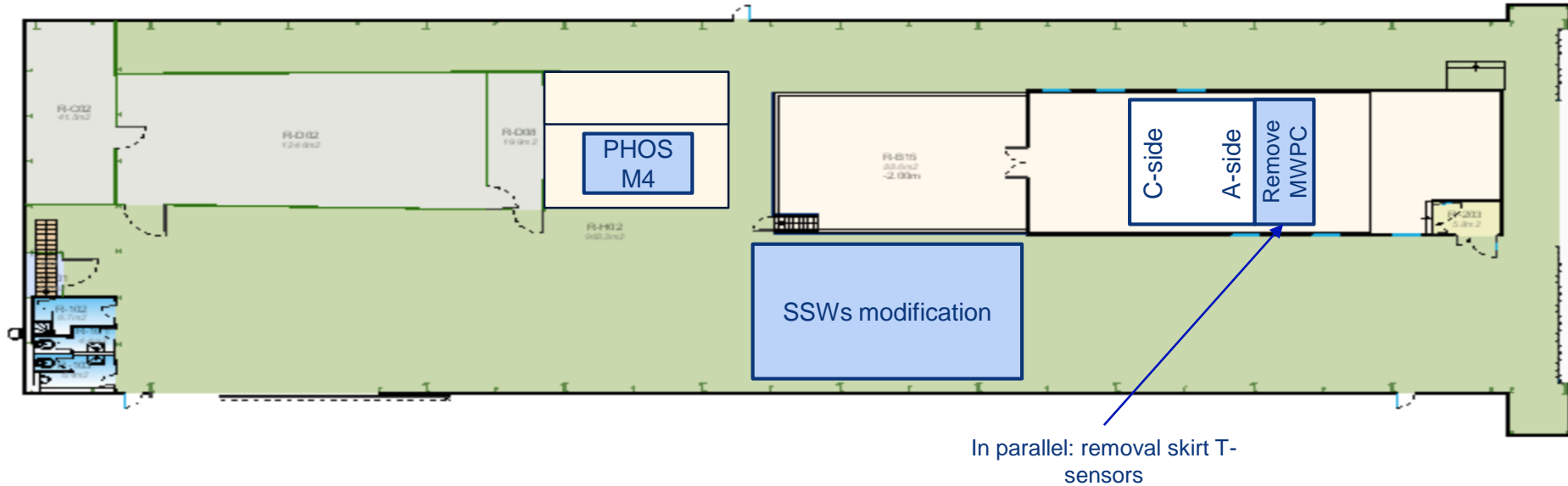
UX25 activities w19 – Mon 6 May 2019



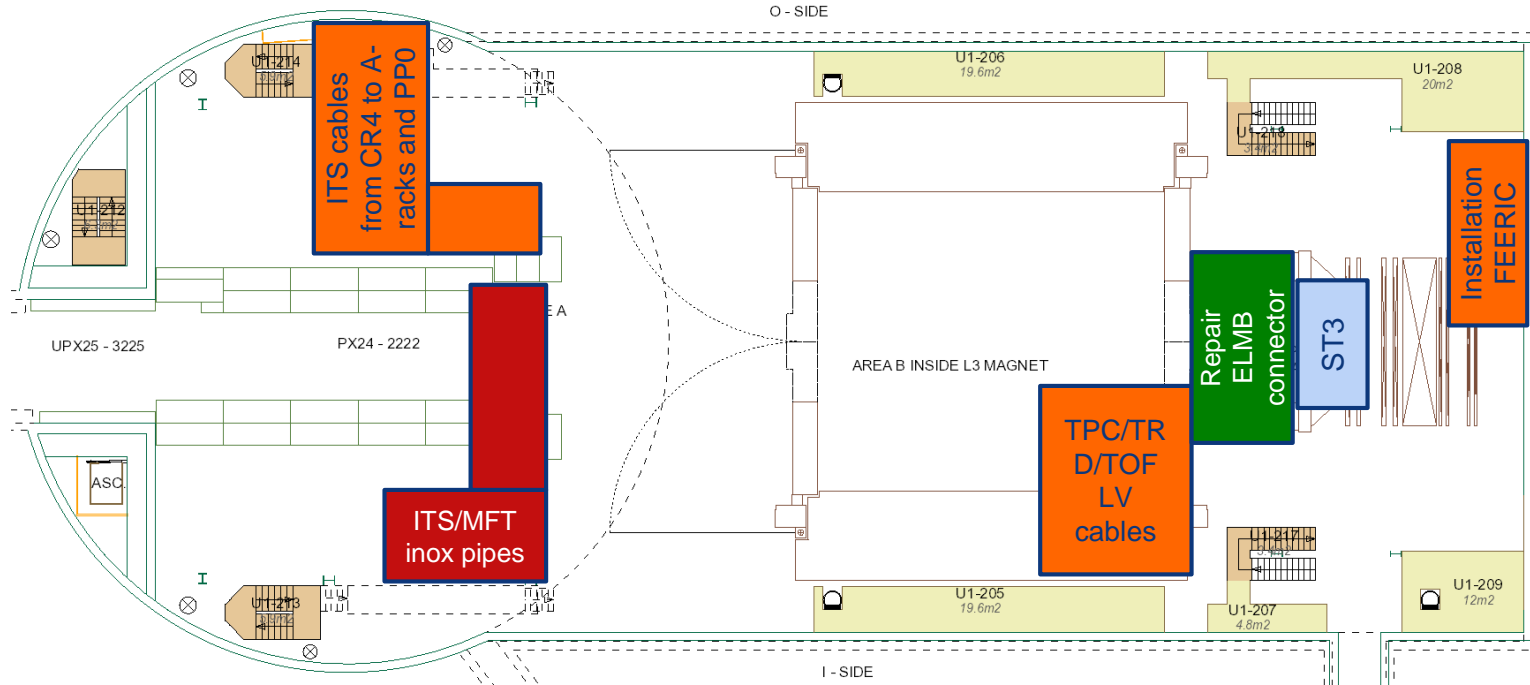
Miniframe activities w19 – Mon 6 May 2019



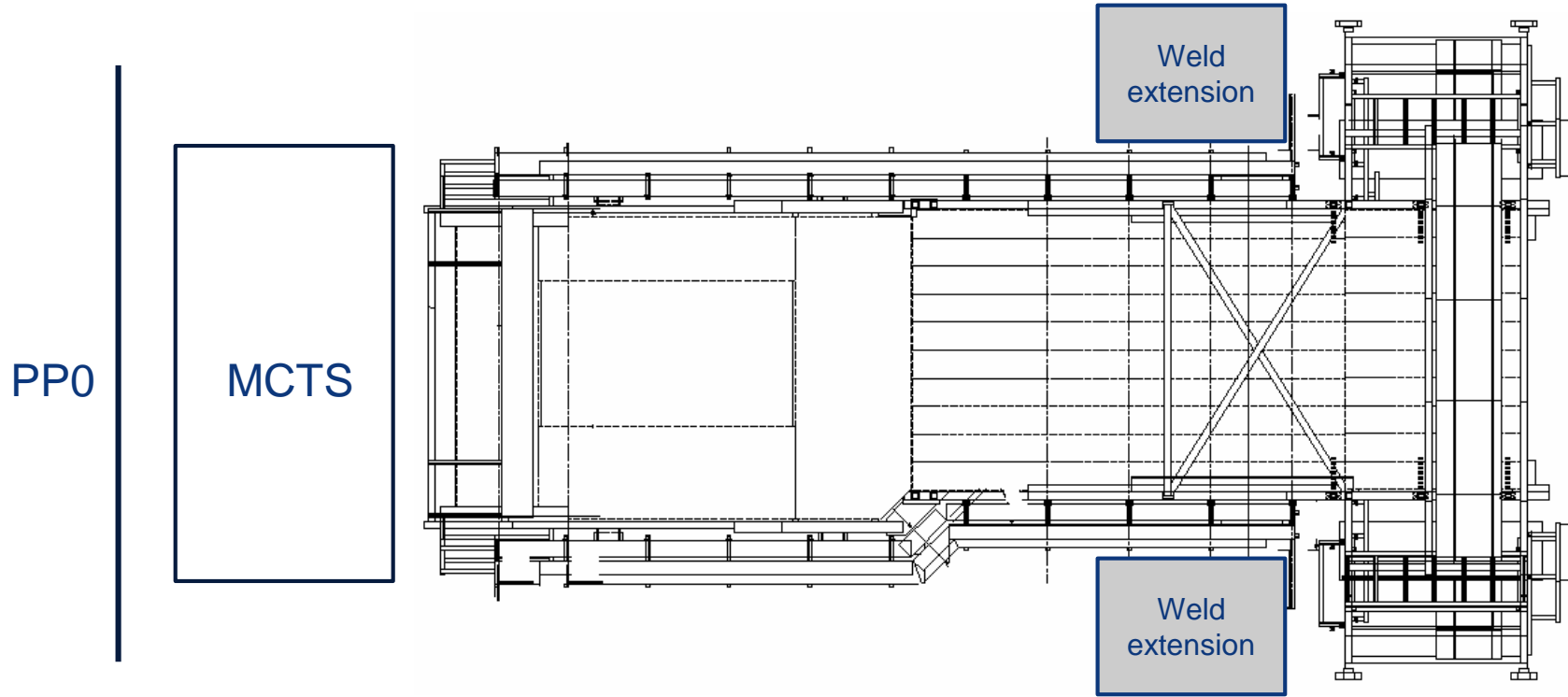
SXL2 activities w19 – Mon 6 May 2019



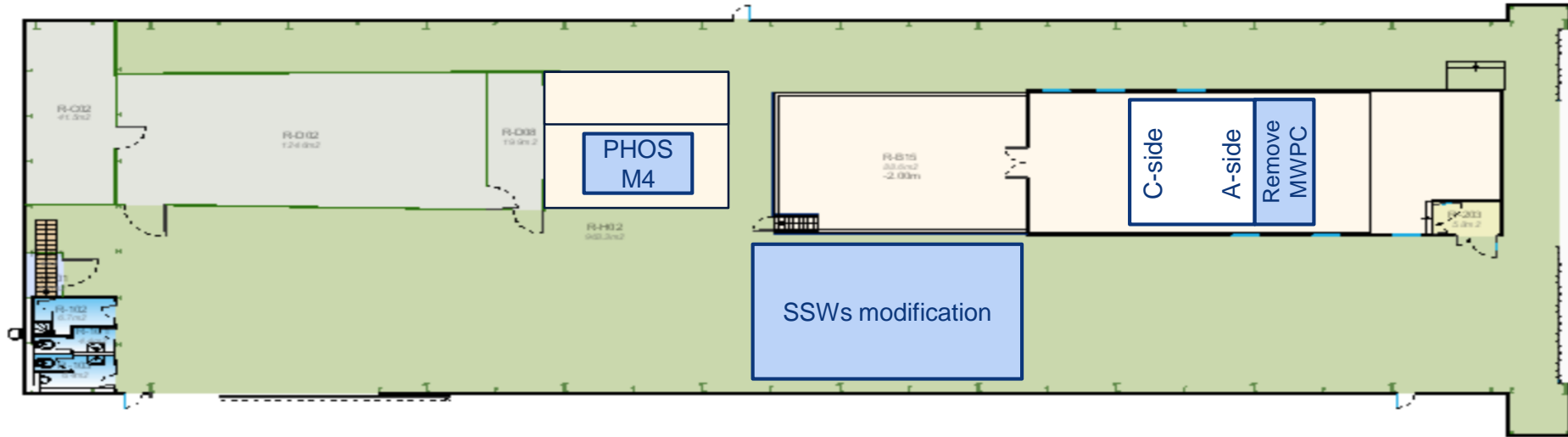
UX25 activities w19 – Tue 7 May 2019



Miniframe activities w19 – Tue 7 May 2019

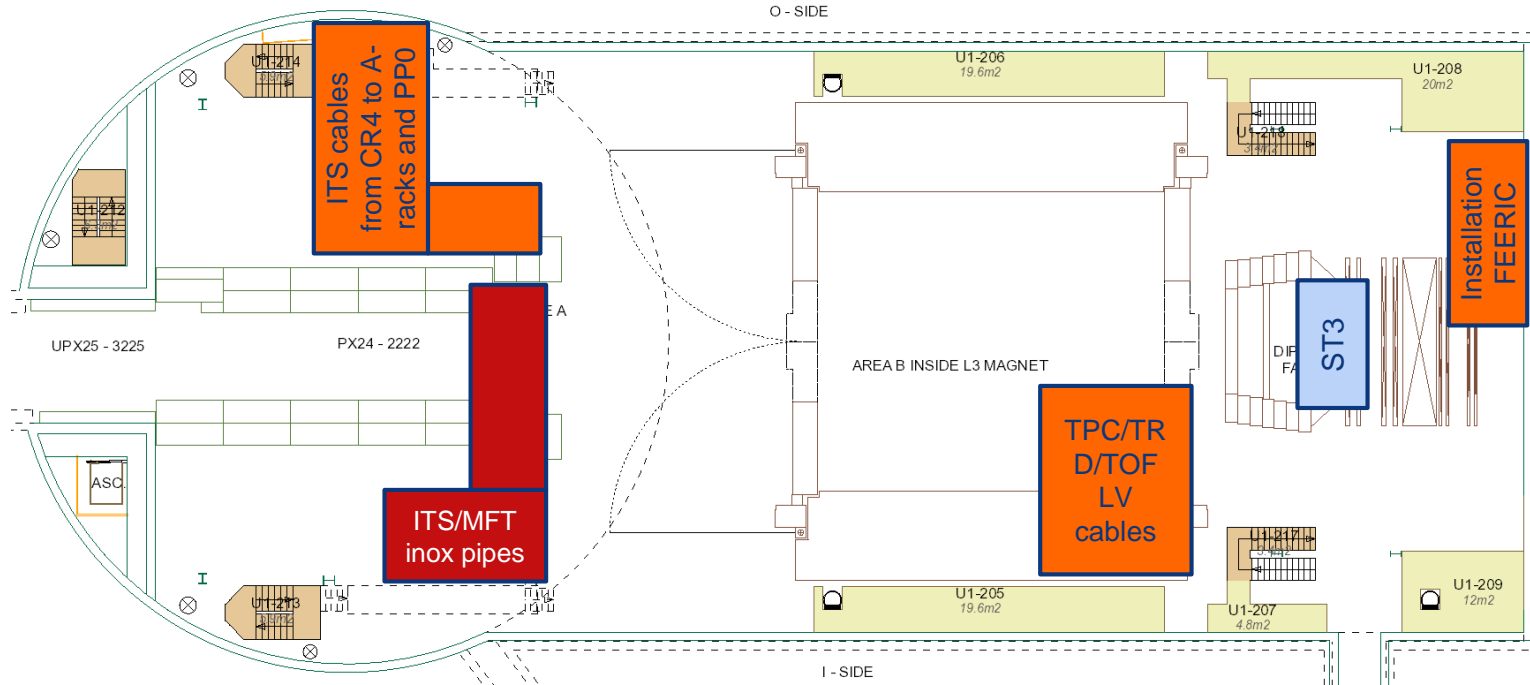


SXL2 activities w19 – Tue 7 May 2019

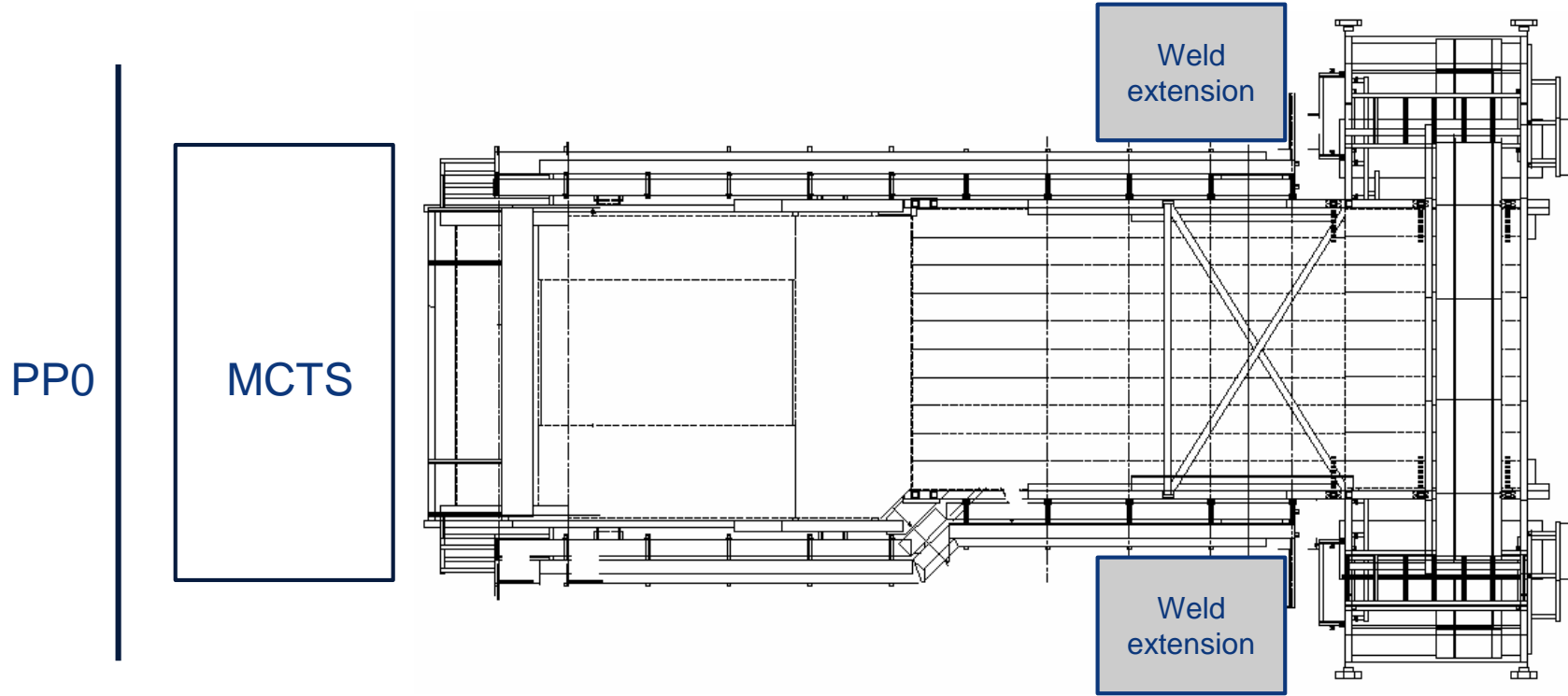


UX25 activities w19 – Wed 8 May 2019

ALTEAD: open SXL2 dalle

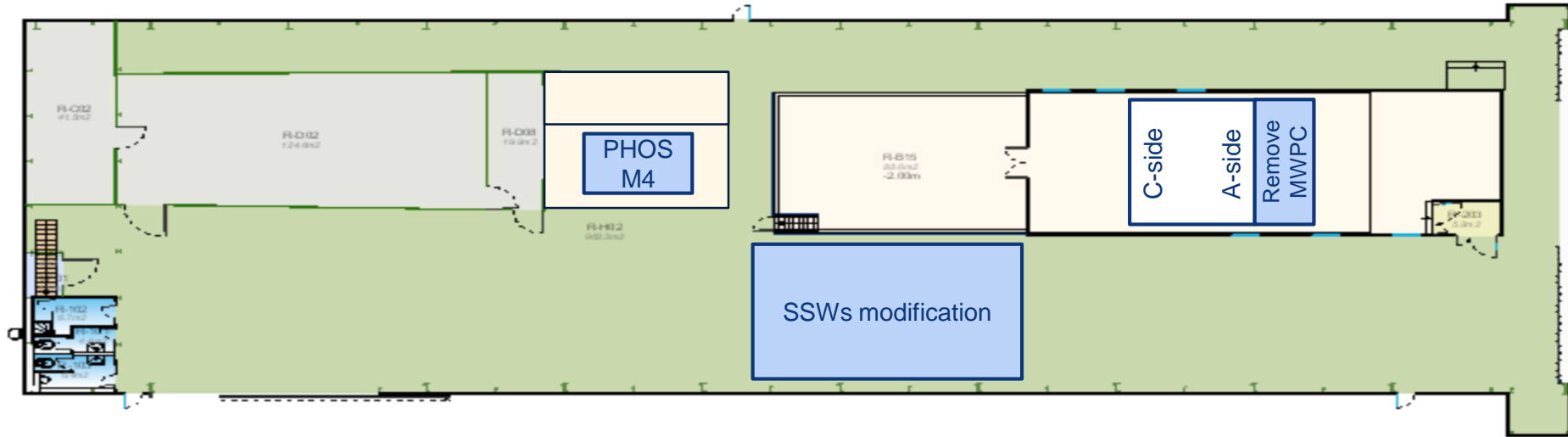


Miniframe activities w19 – Wed 8 May 2019



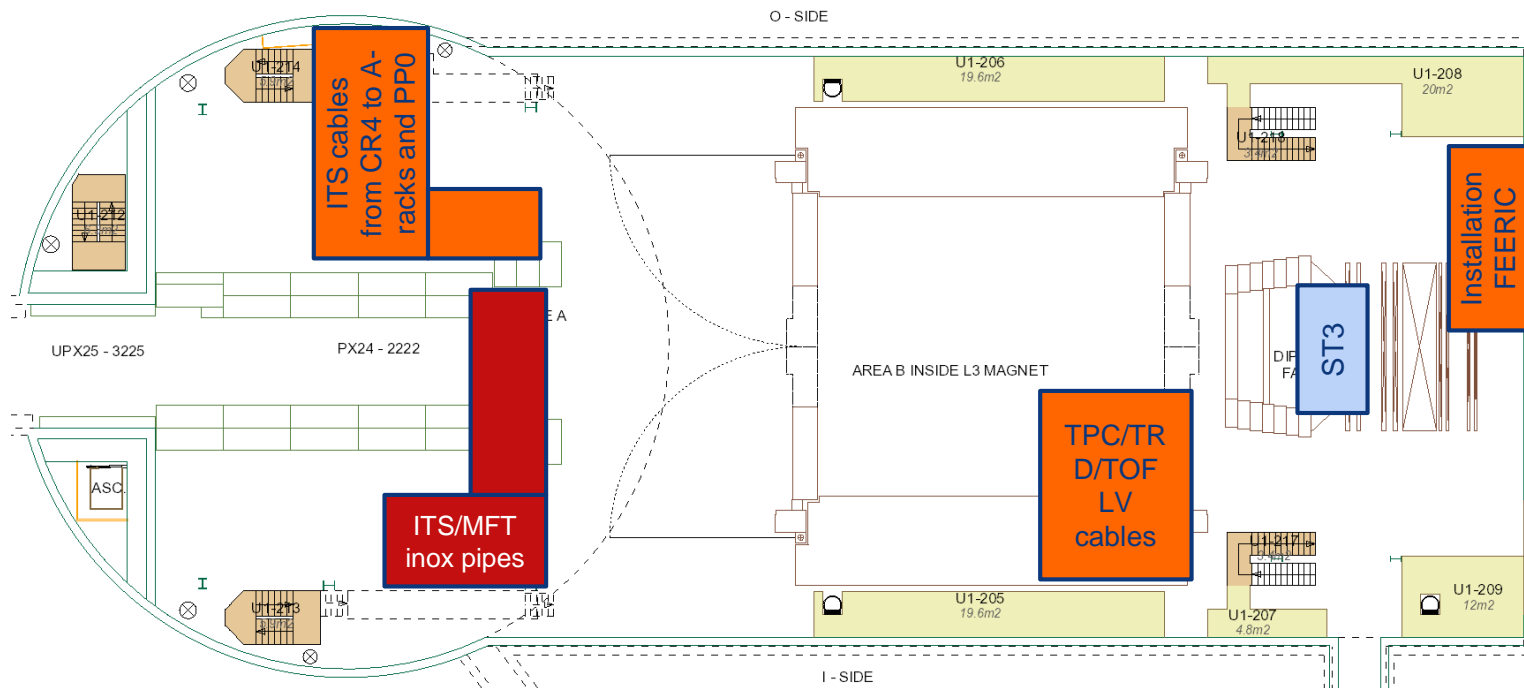
SXL2 activities w19 – Wed 8 May 2019

ALTEAD: maintenance SXL2 crane

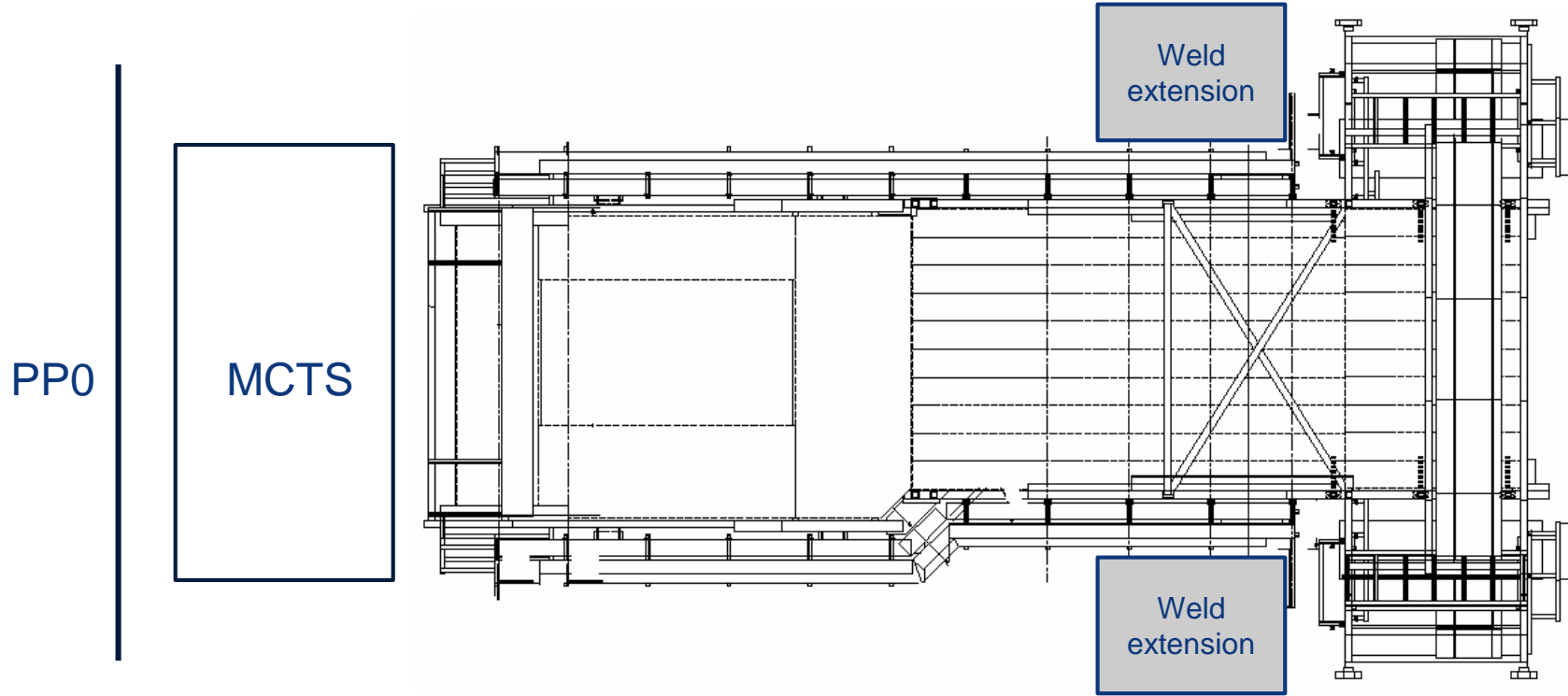


UX25 activities w19 – Thu 9 May 2019

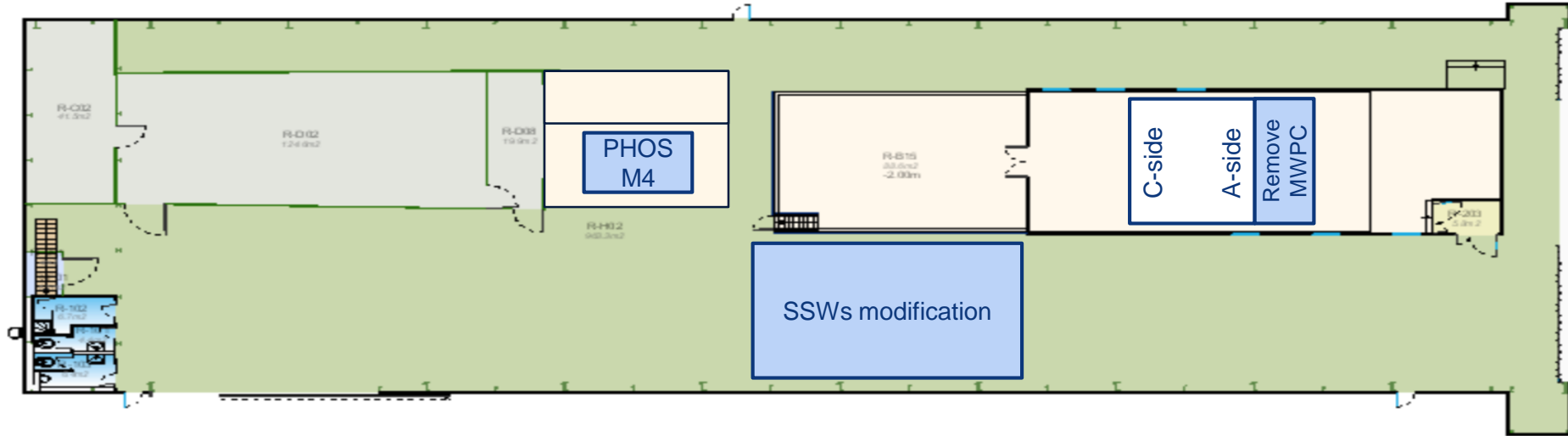
Cavern lift maintenance: no access from 6:00 AM to 8:00 AM



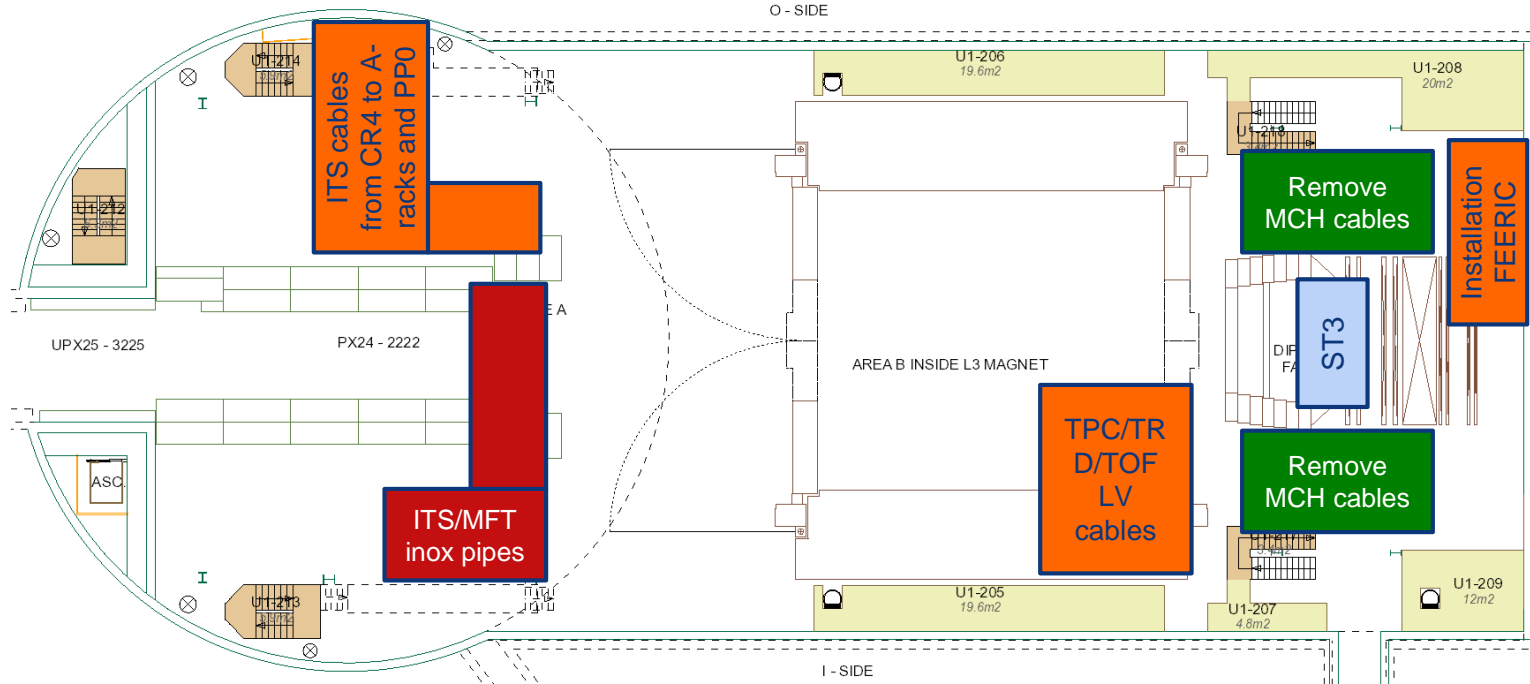
Miniframe activities w19 – Thu 9 May 2019



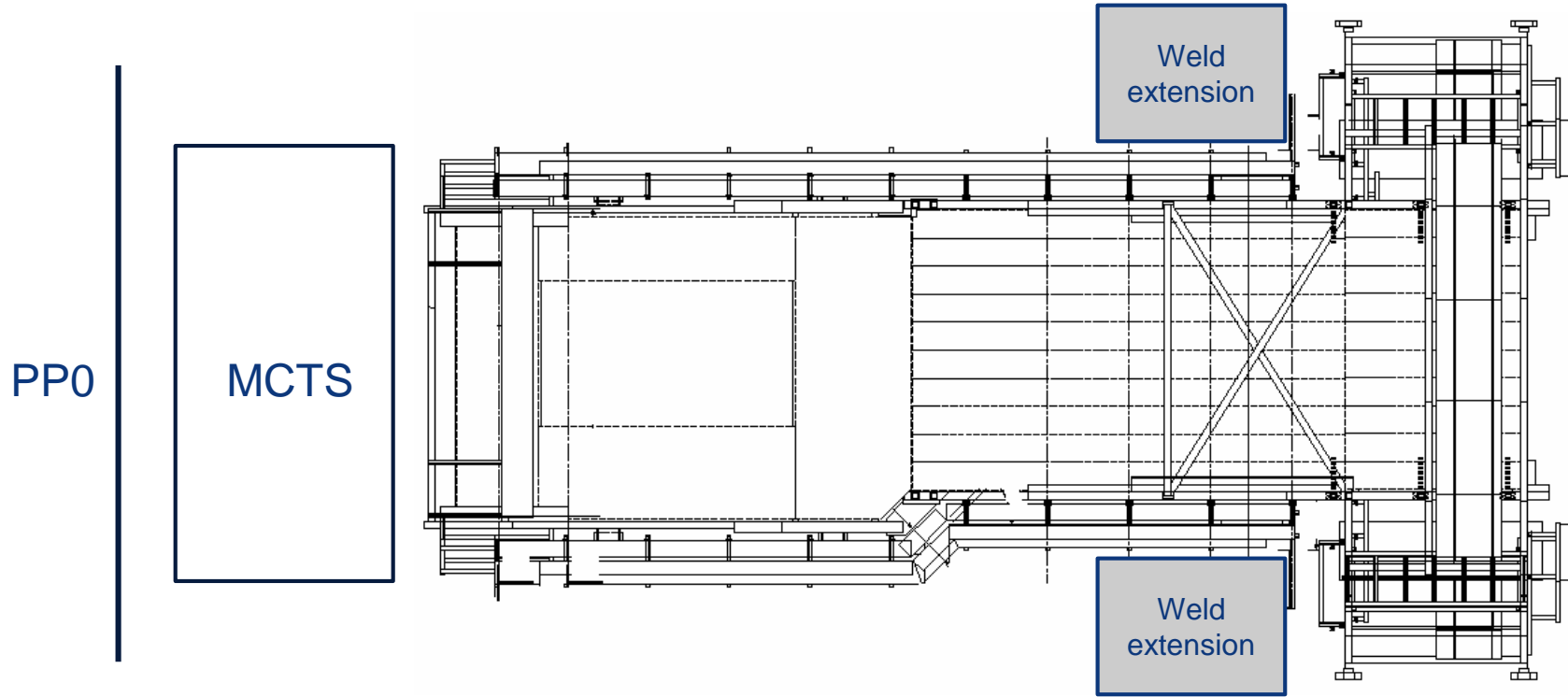
SXL2 activities w19 – Thu 9 May 2019



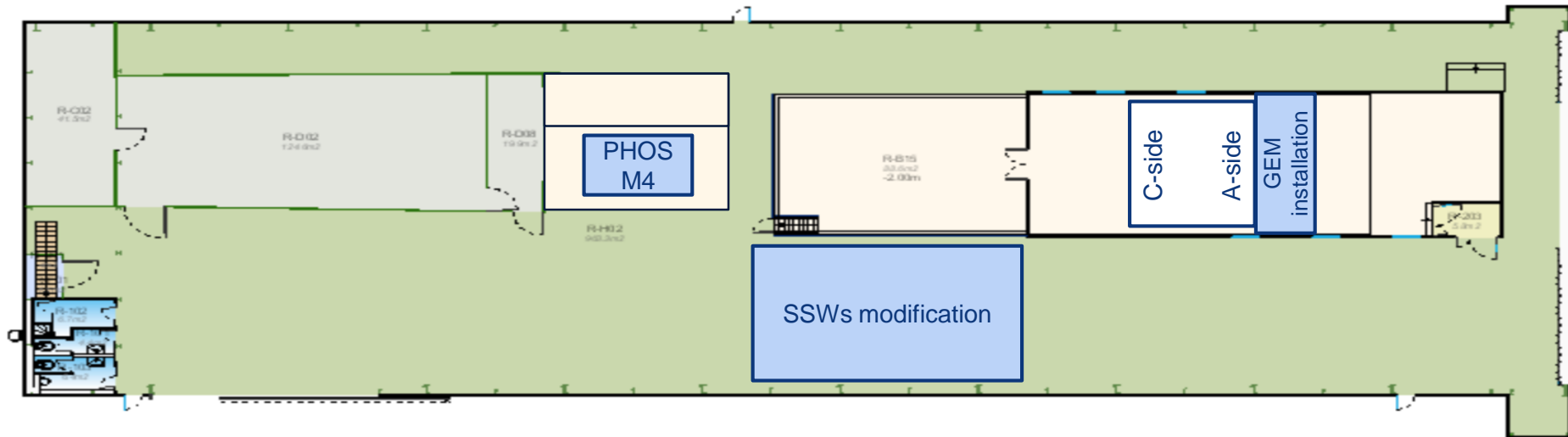
UX25 activities w19 – Fri 10 May 2019



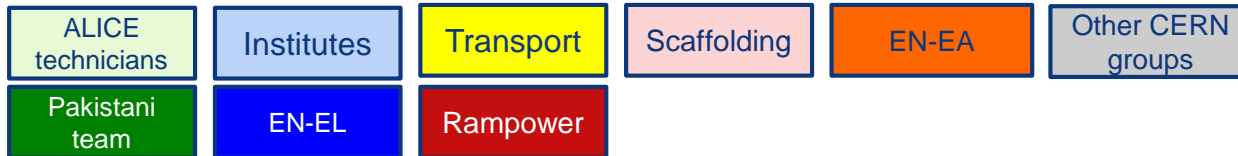
Miniframe activities w19 – Fri 10 May 2019



SXL2 activities w19 – Fri 10 May 2019



Day-by-day sequence w20



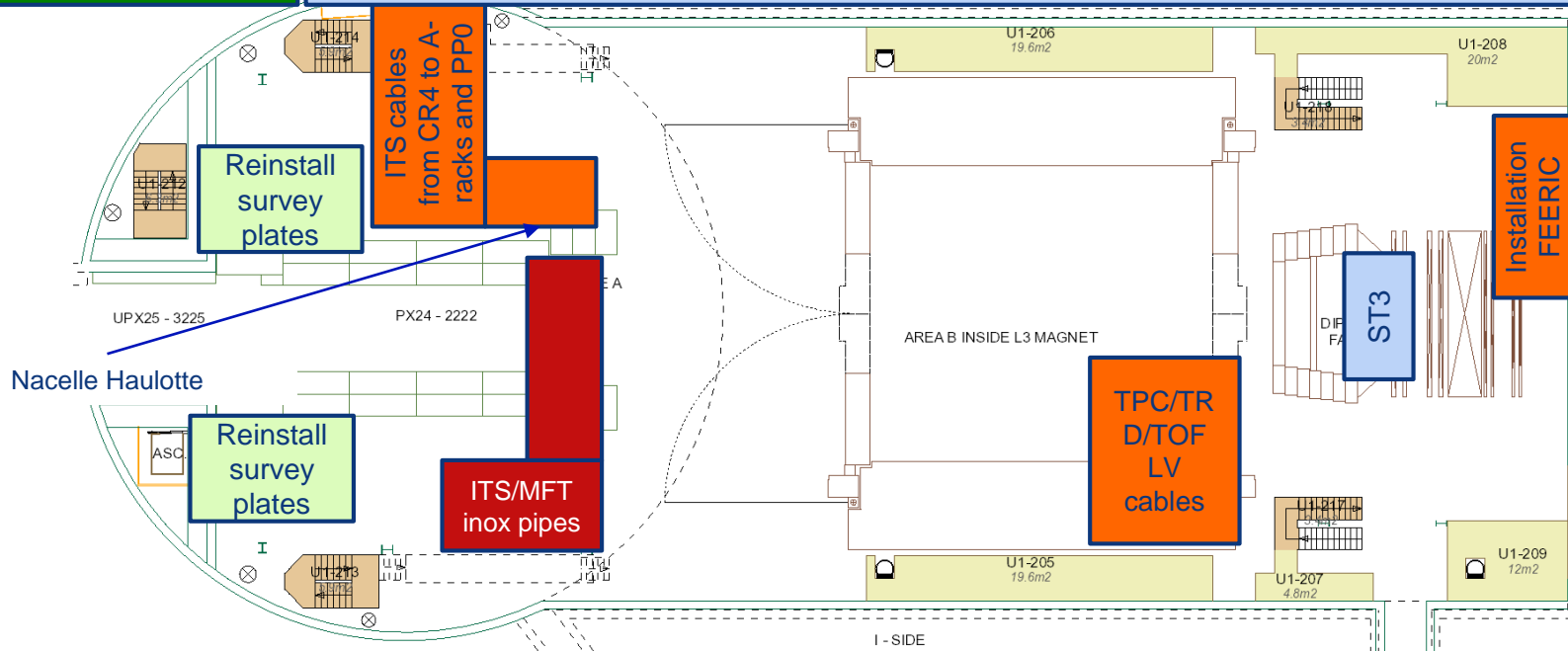
UX25 activities w20 – Mon 13 May 2019

Weld miniframe extension structure (whole week)

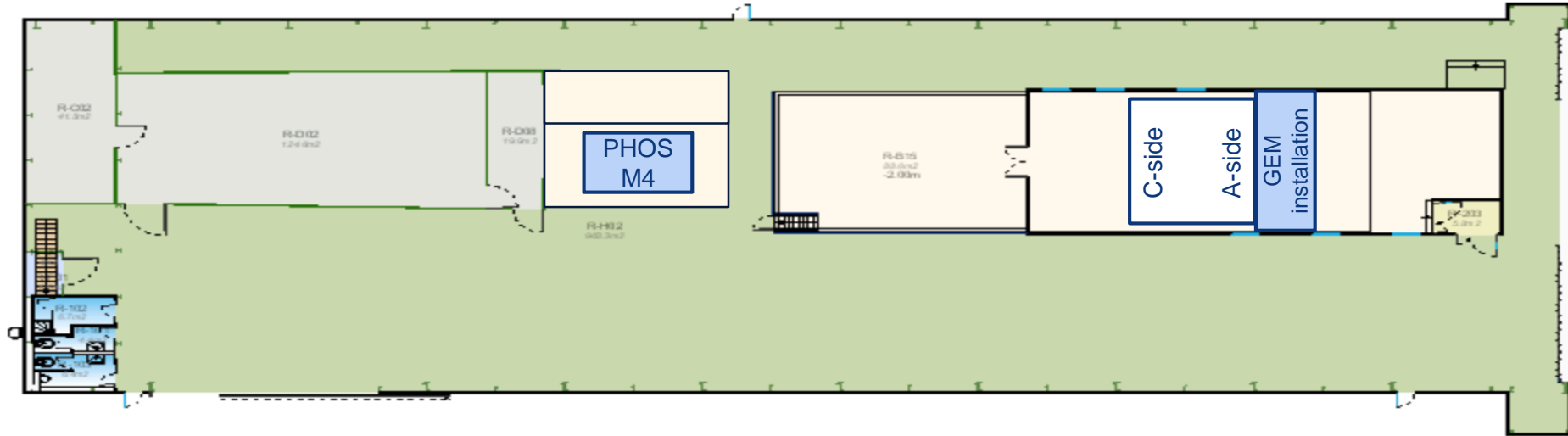
Install CLR-CR5 cable for TPC (open 'dalle' in front of SXL2) – need nacelle

Install PP0 mockup

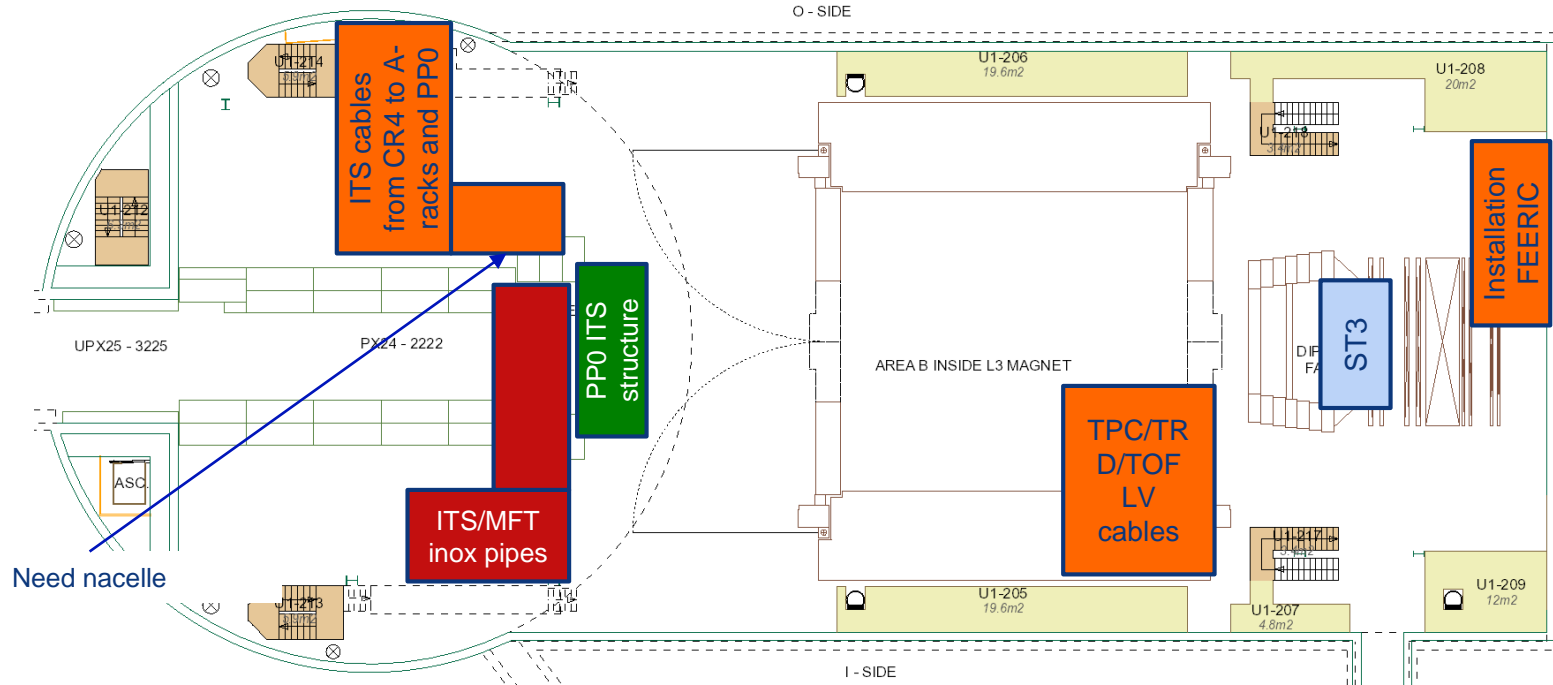
Acoustic noise measurement chillers – possible perturbations water T (whole week)



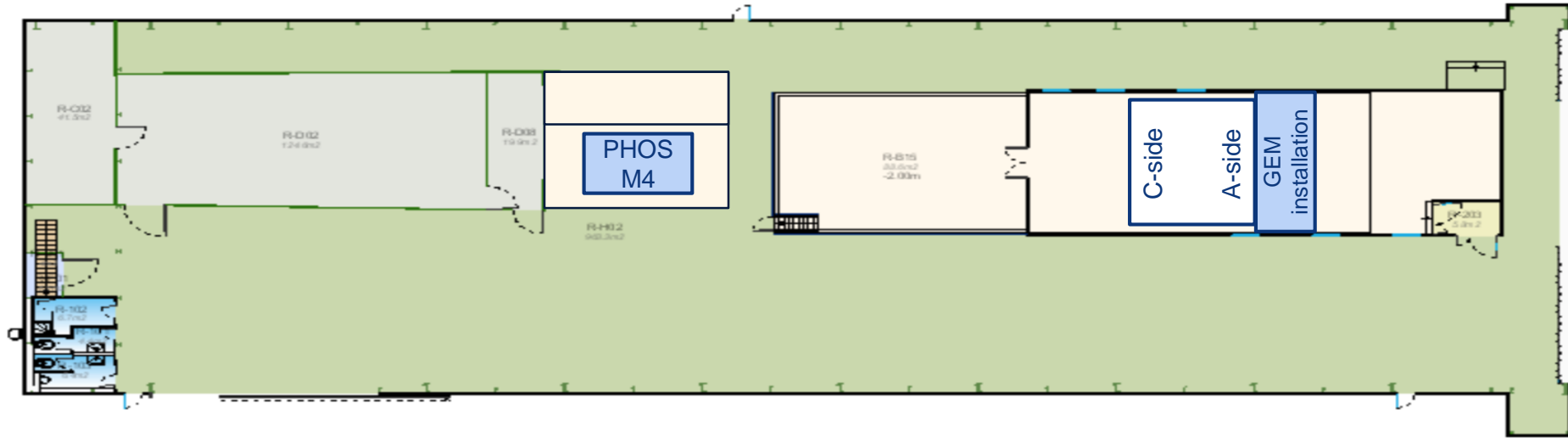
SXL2 activities w20 – Mon 13 May 2019



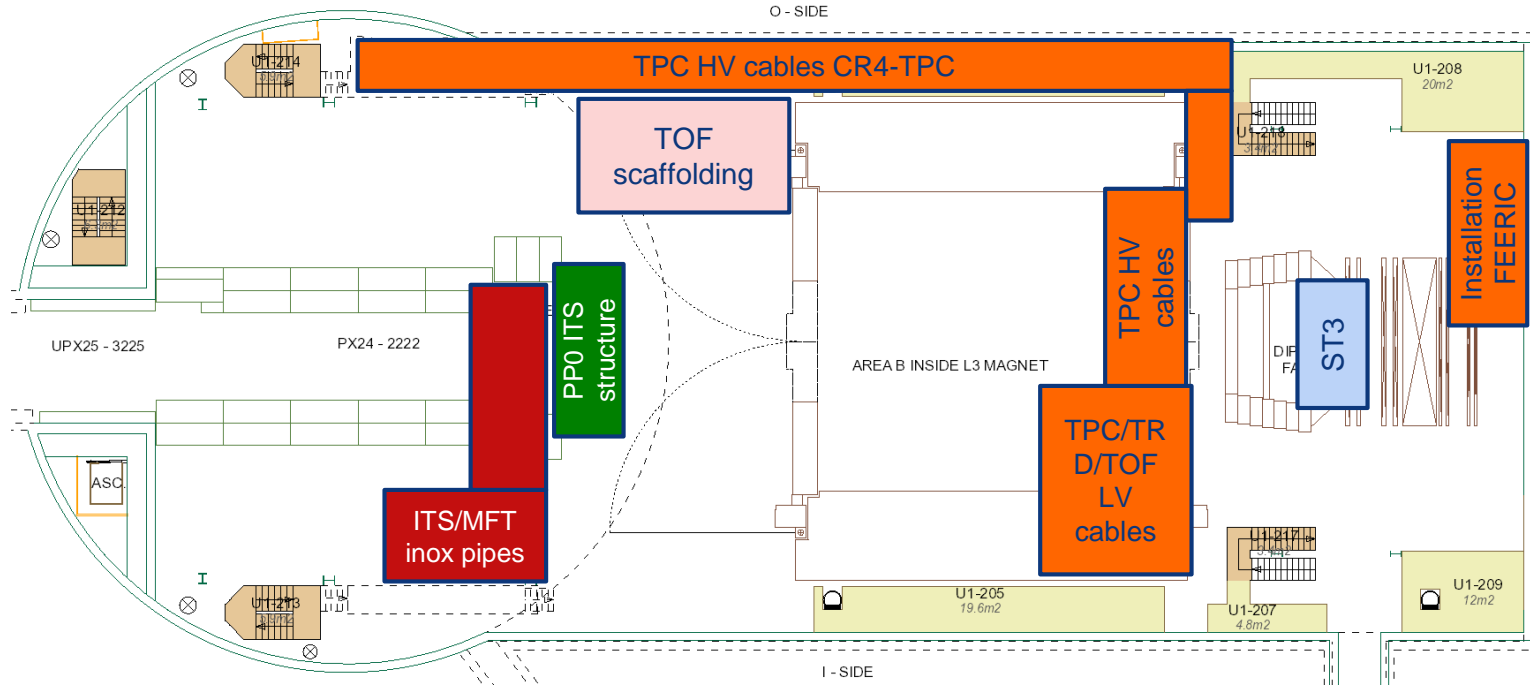
UX25 activities w20 – Tue 14 May 2019



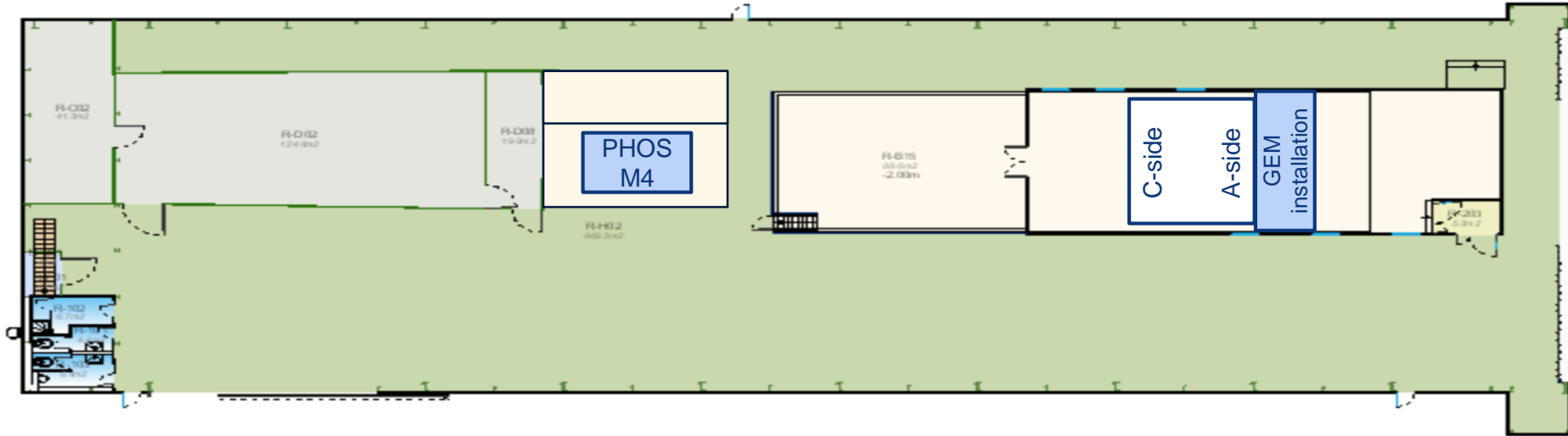
SXL2 activities w20 – Tue 14 May 2019



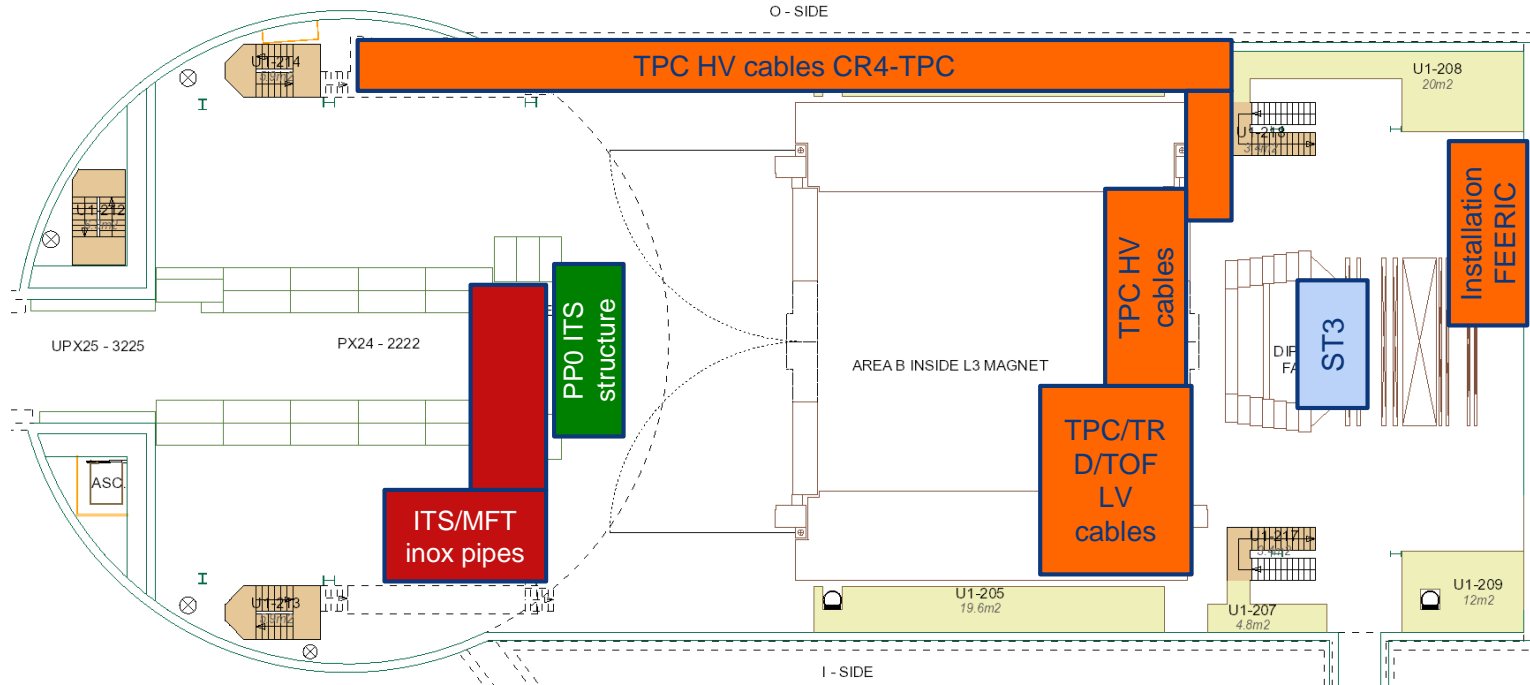
UX25 activities w20 – Wed 15 May 2019



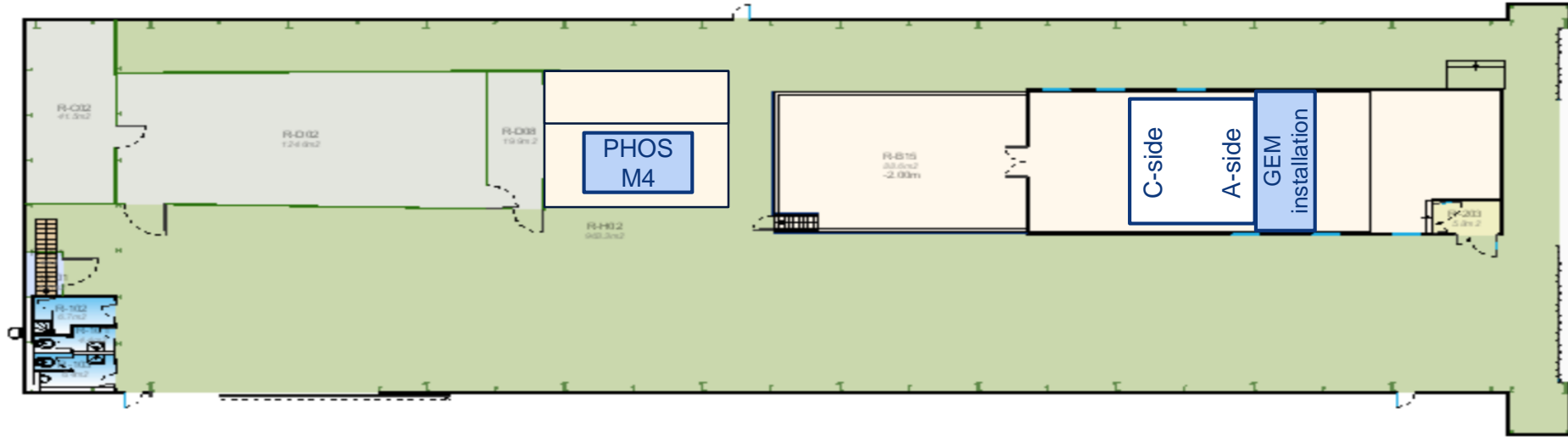
SXL2 activities w20 – Wed 15 May 2019



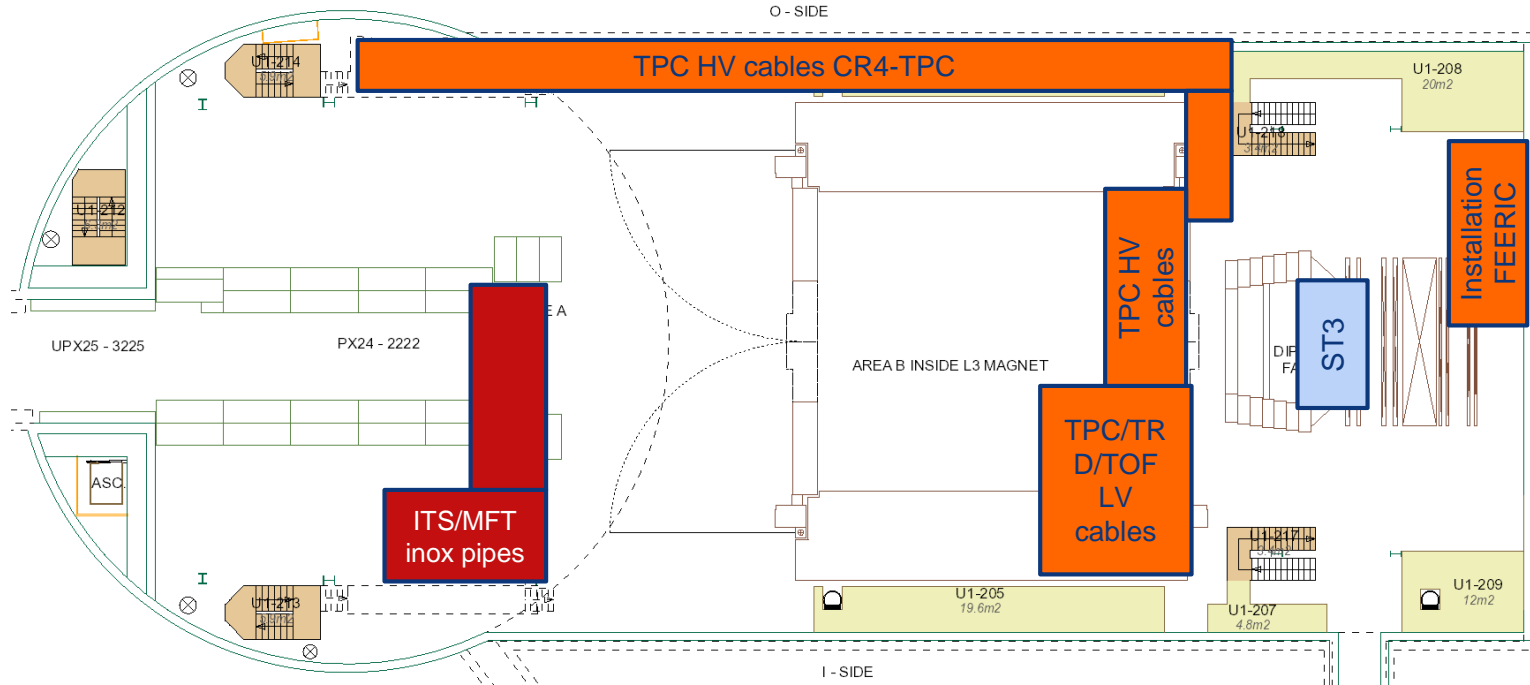
UX25 activities w20 – Thu 16 May 2019



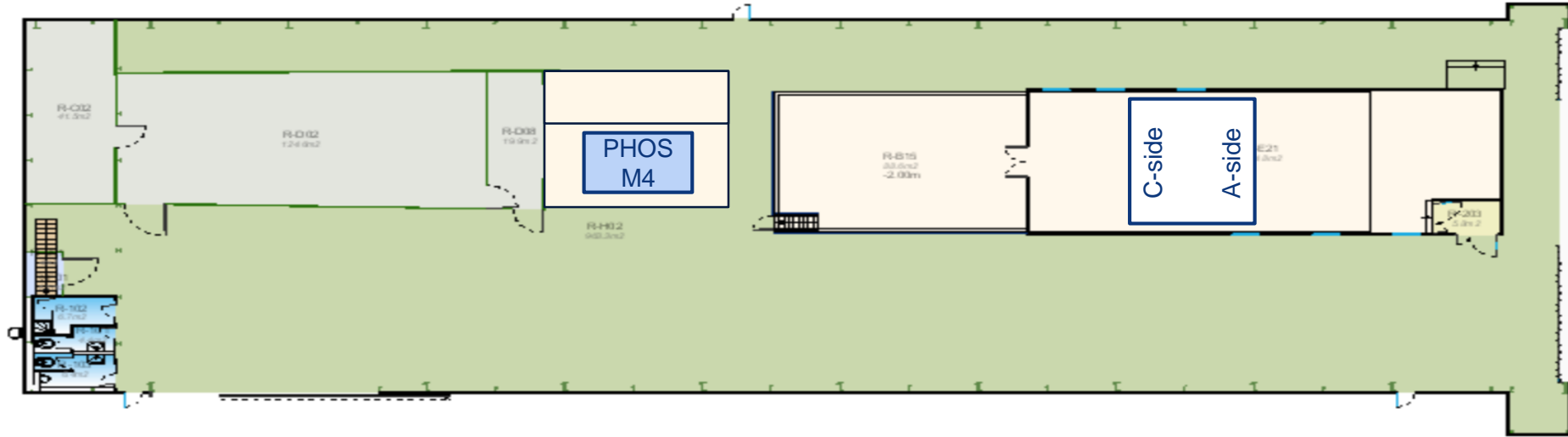
SXL2 activities w20 – Thu 16 May 2019



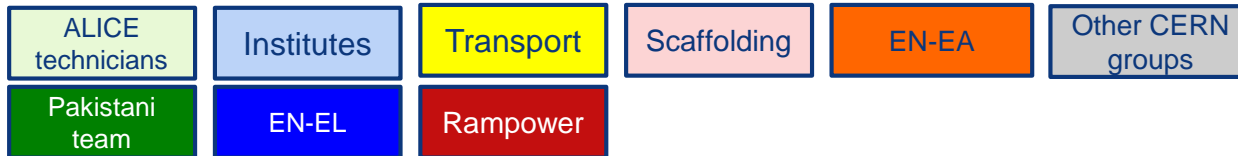
UX25 activities w20 – Fri 17 May 2019



SXL2 activities w20 – Fri 17 May 2019



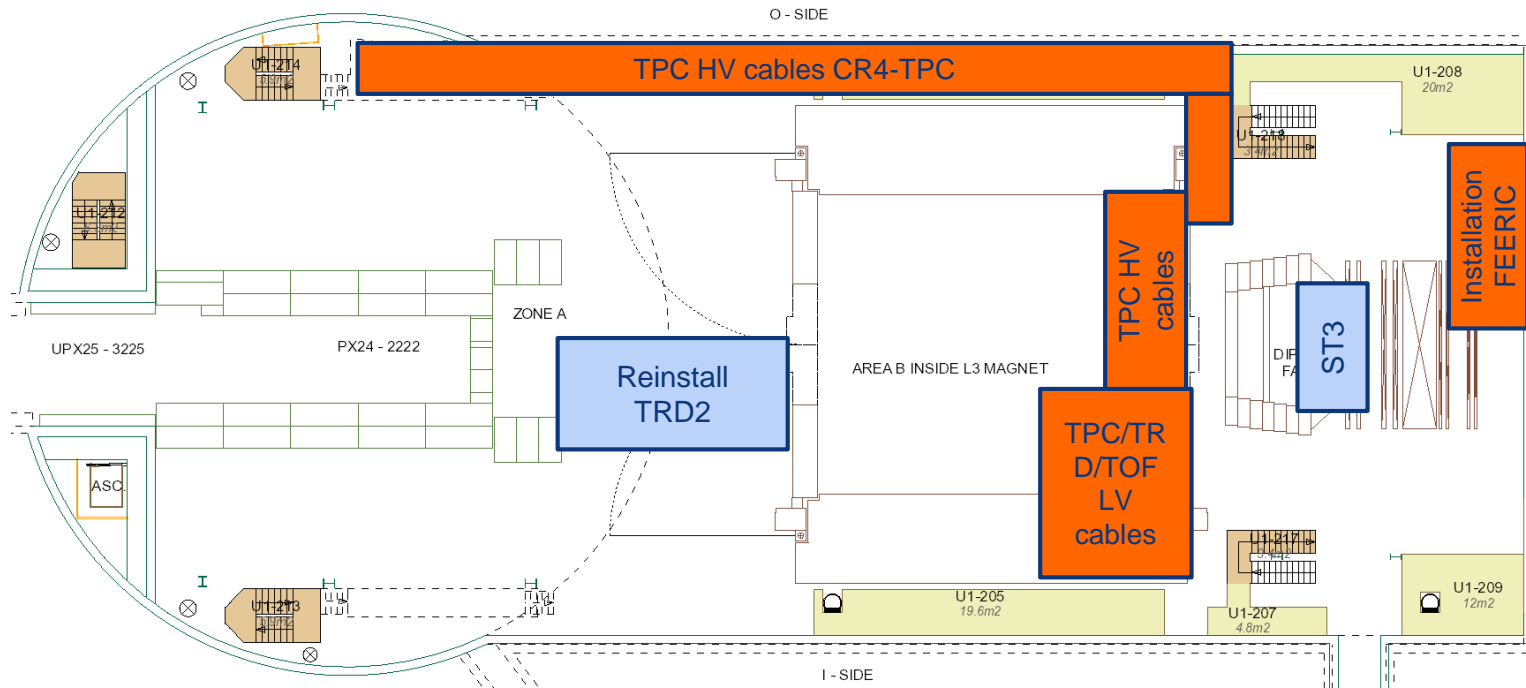
Day-by-day sequence w21



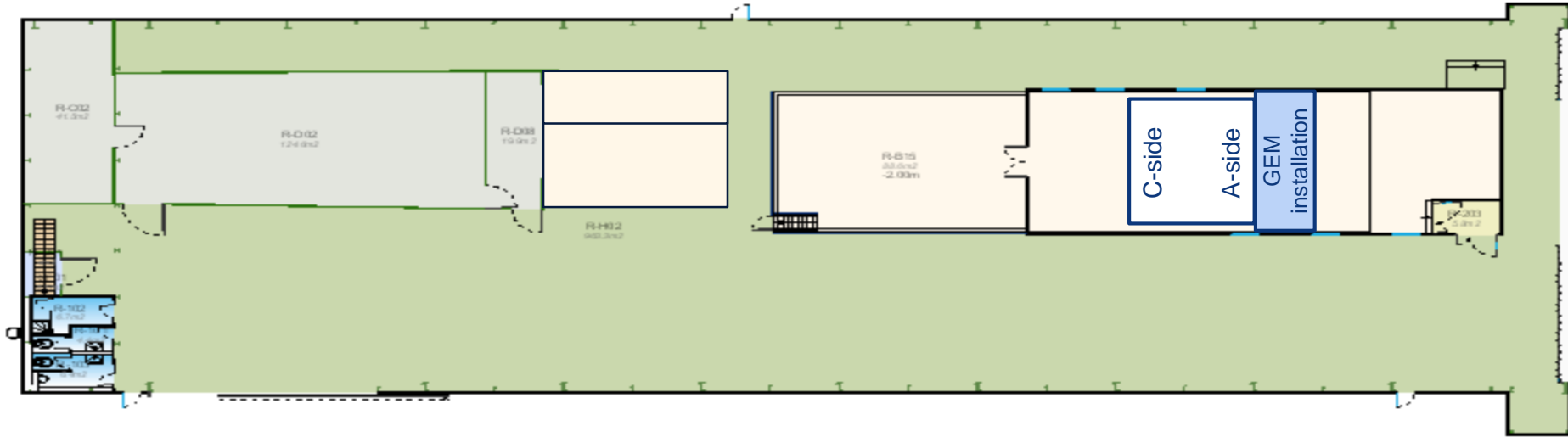
UX25 activities w21 – Mon 20 May 2019

Assemble FIT infrastructure inside MNF (including FIT PP1 patch panel) – whole week

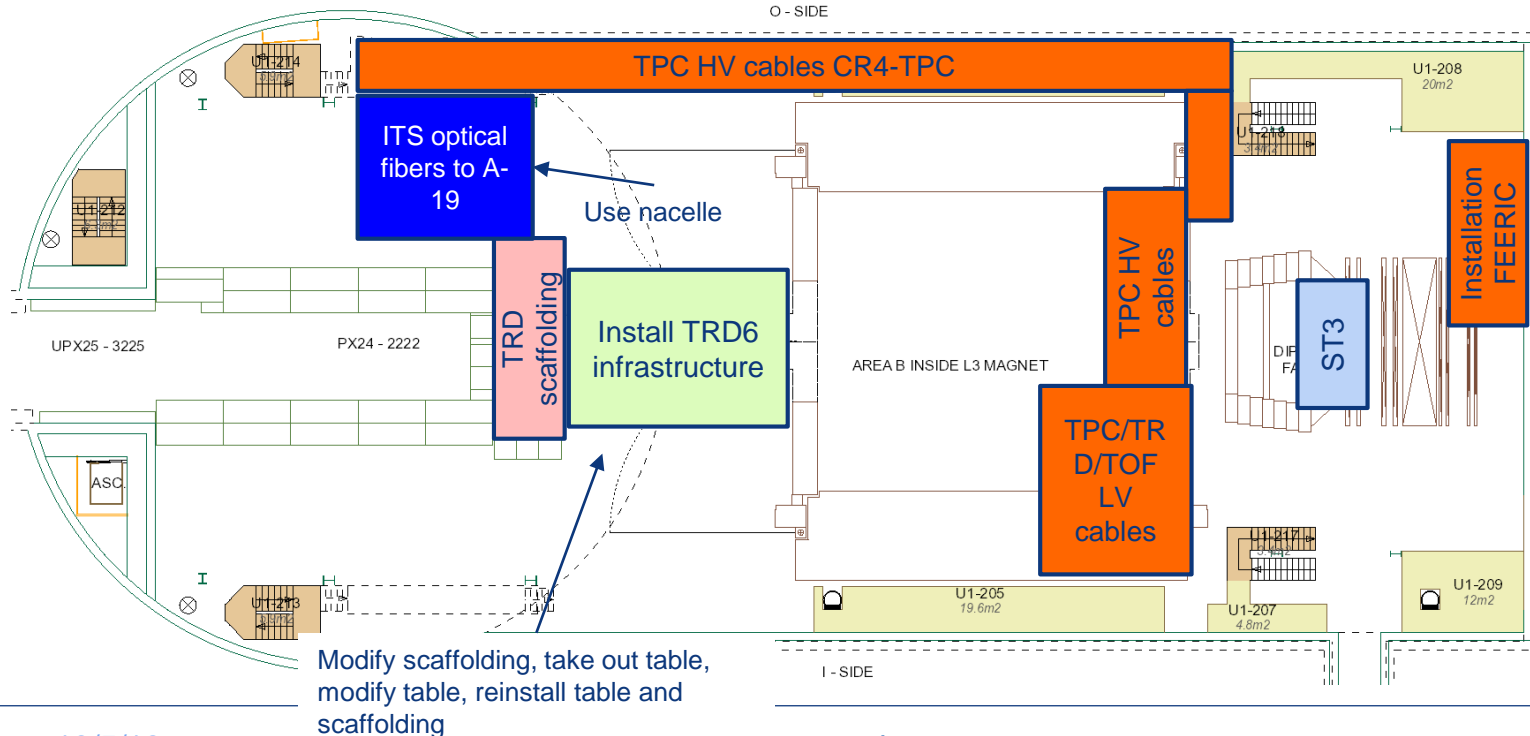
Rampower: install new ITS/MFT inox pipes MNF (including 2x2 TPC resistor rods pipes) – whole week



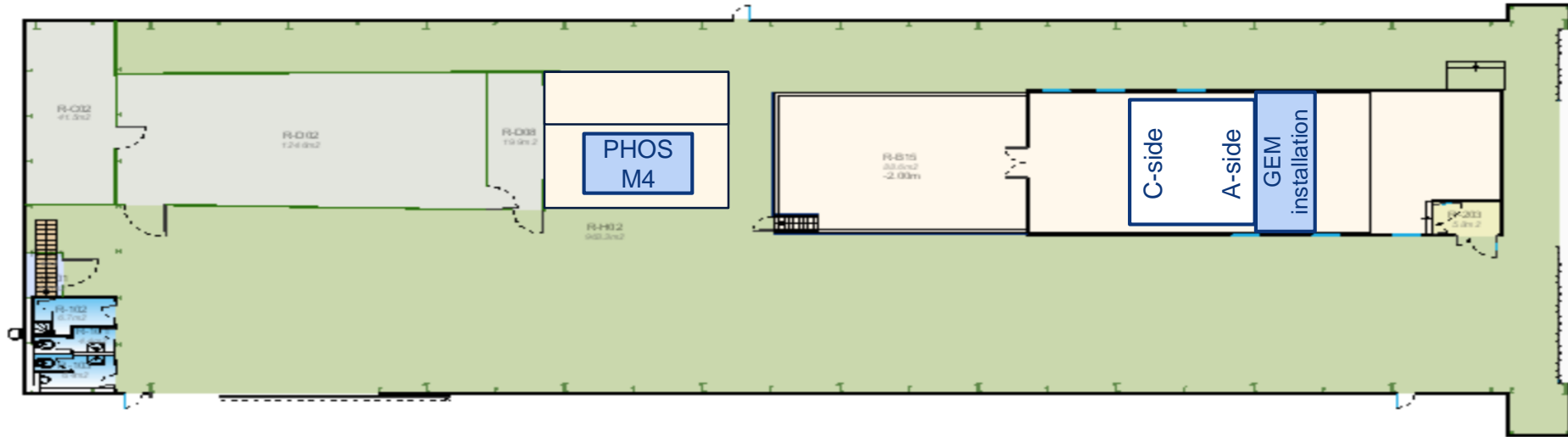
SXL2 activities w21 – Mon 20 May 2019



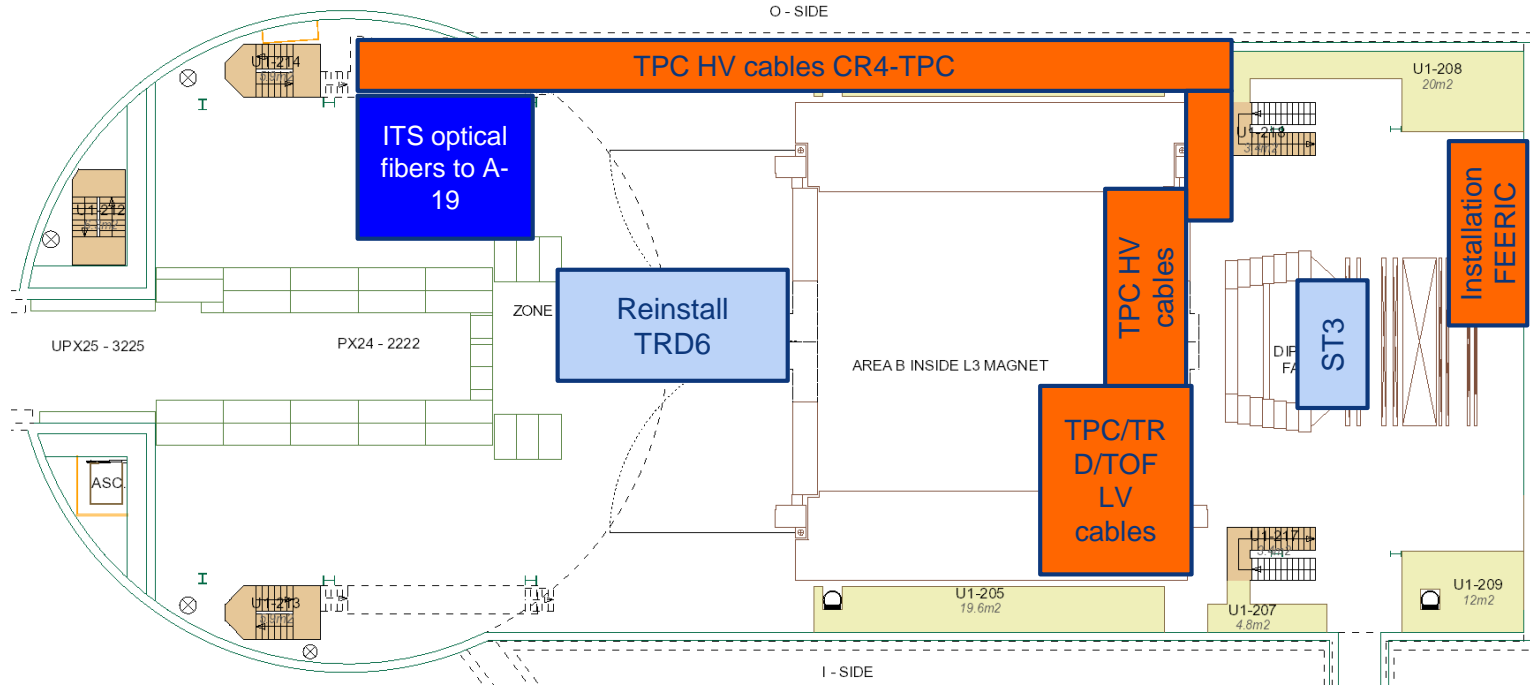
UX25 activities w21 – Tue 21 May 2019



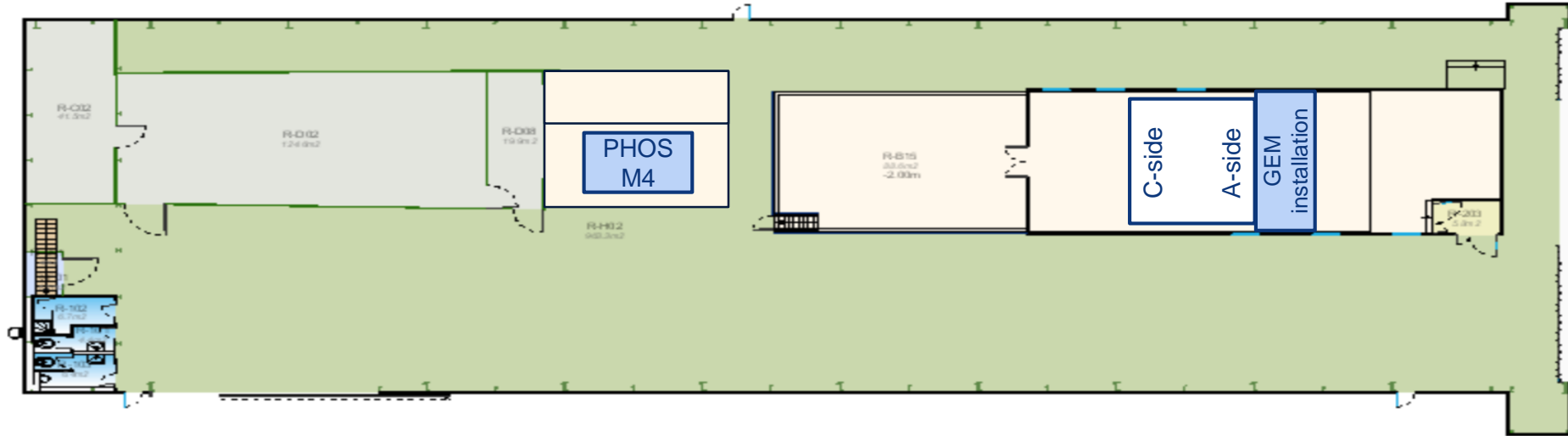
SXL2 activities w21 – Tue 21 May 2019



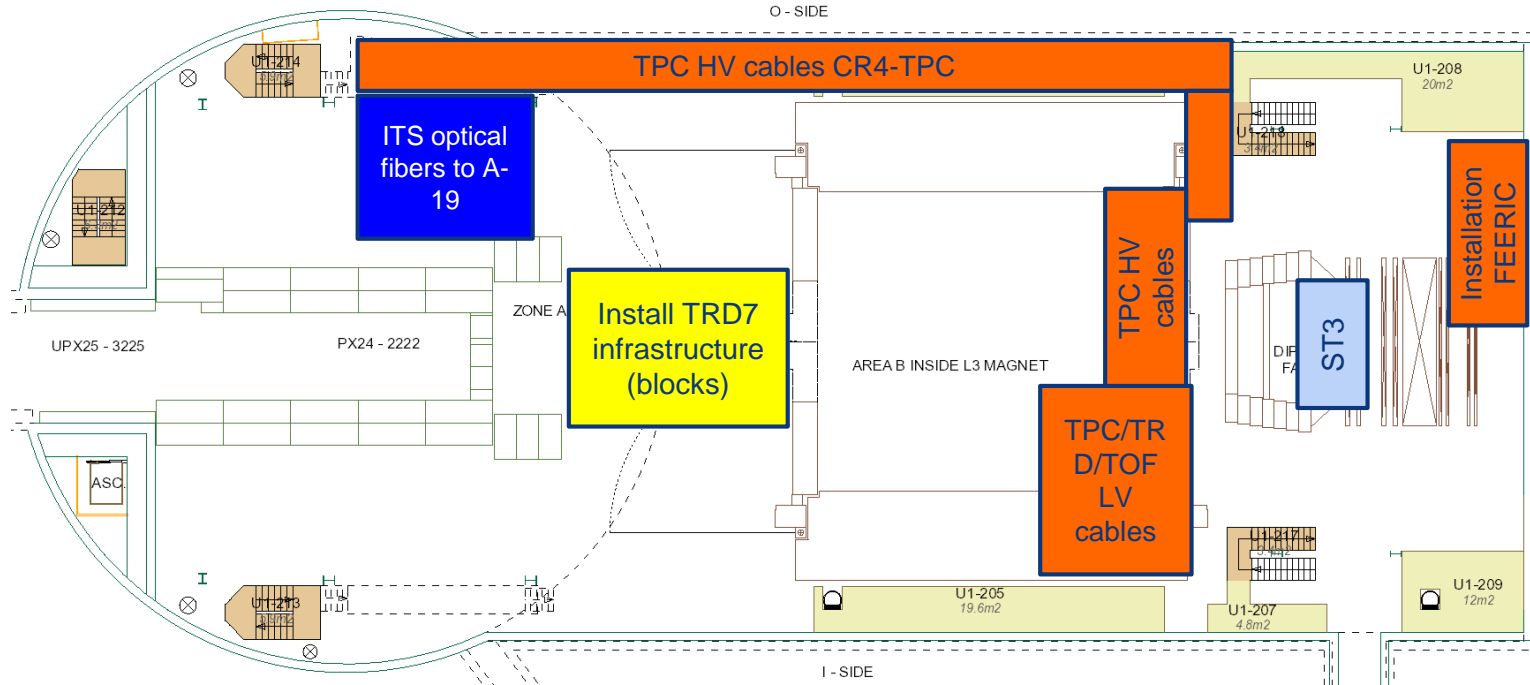
UX25 activities w21 – Wed 22 May 2019



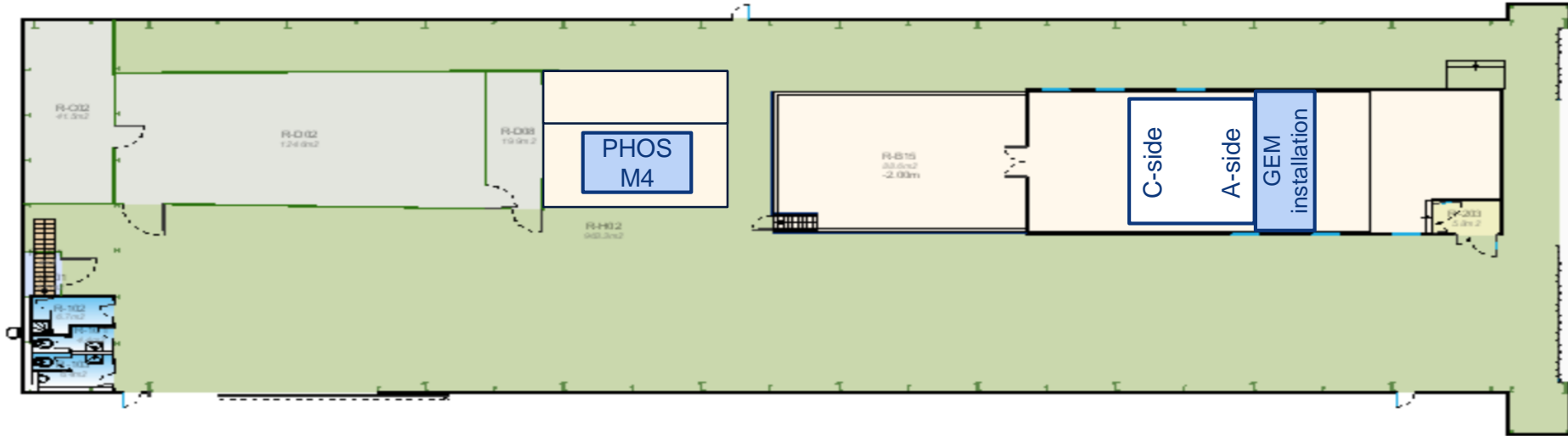
SXL2 activities w21 – Wed 22 May 2019



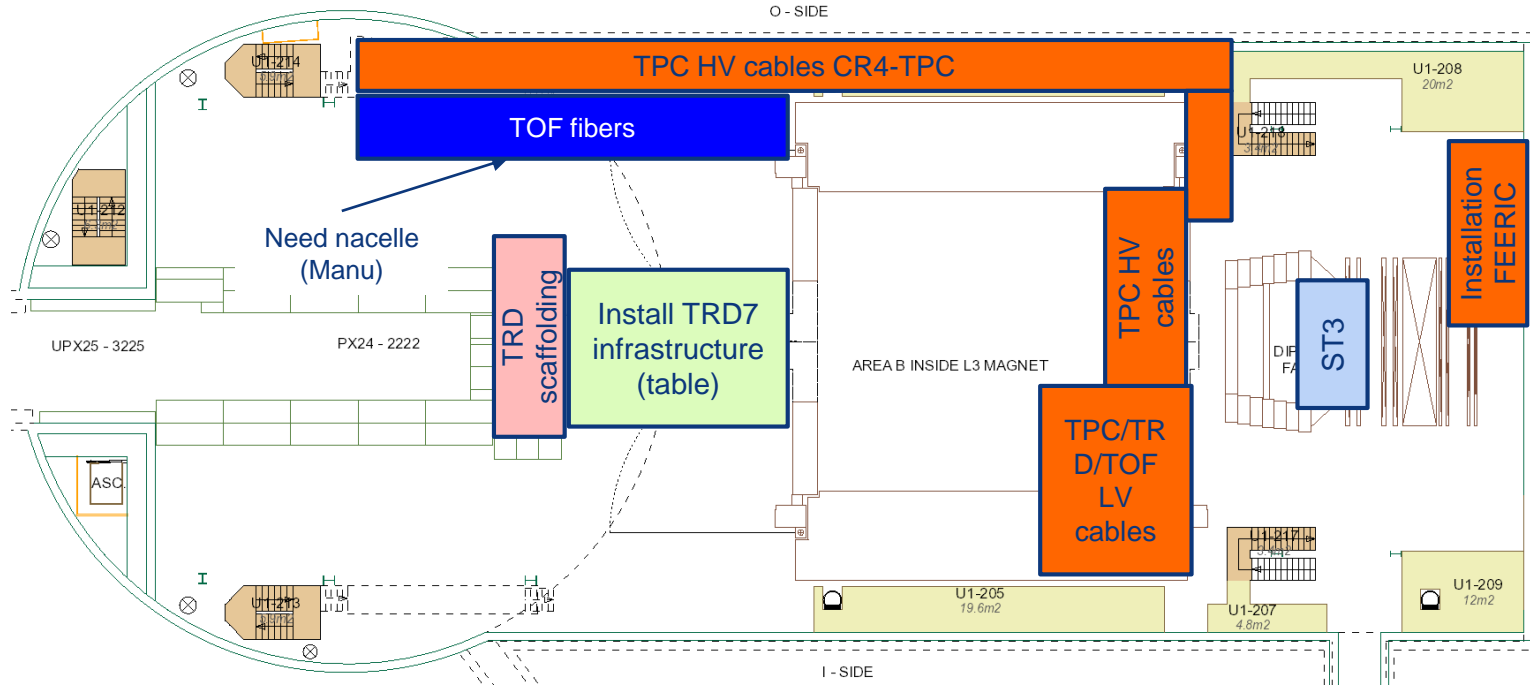
UX25 activities w21 – Thu 23 May 2019



SXL2 activities w21 – Thu 23 May 2019



UX25 activities w21 – Fri 24 May 2019



SXL2 activities w21 – Fri 24 May 2019

