

LS2 planning meeting

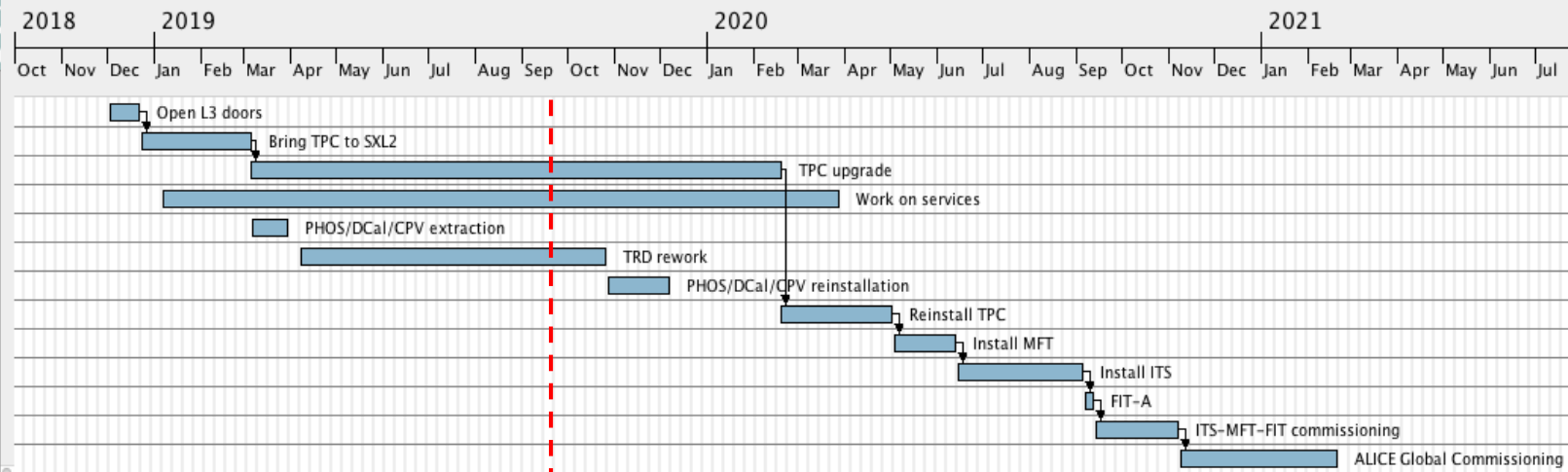
A.Tauro



LS2 master plan (v31)



Begin date	End date	Dur...
3/12/18	21/12/18	15
24/12/18	5/3/19	52
6/3/19	18/2/20	250
7/1/19	27/3/20	320
7/3/19	29/3/19	17
8/4/19	25/10/19	145
28/10/19	6/12/19	30
19/2/20	1/5/20	53
4/5/20	12/6/20	30
15/6/20	4/9/20	60
7/9/20	11/9/20	5
14/9/20	6/11/20	40
9/11/20	19/2/21	75



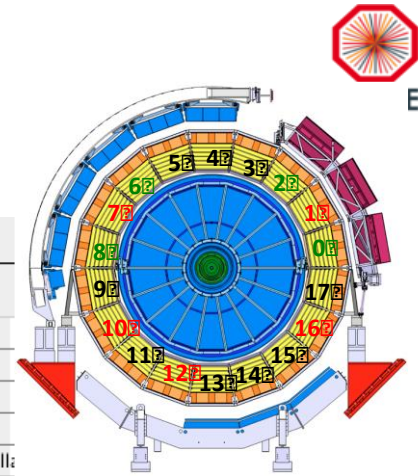
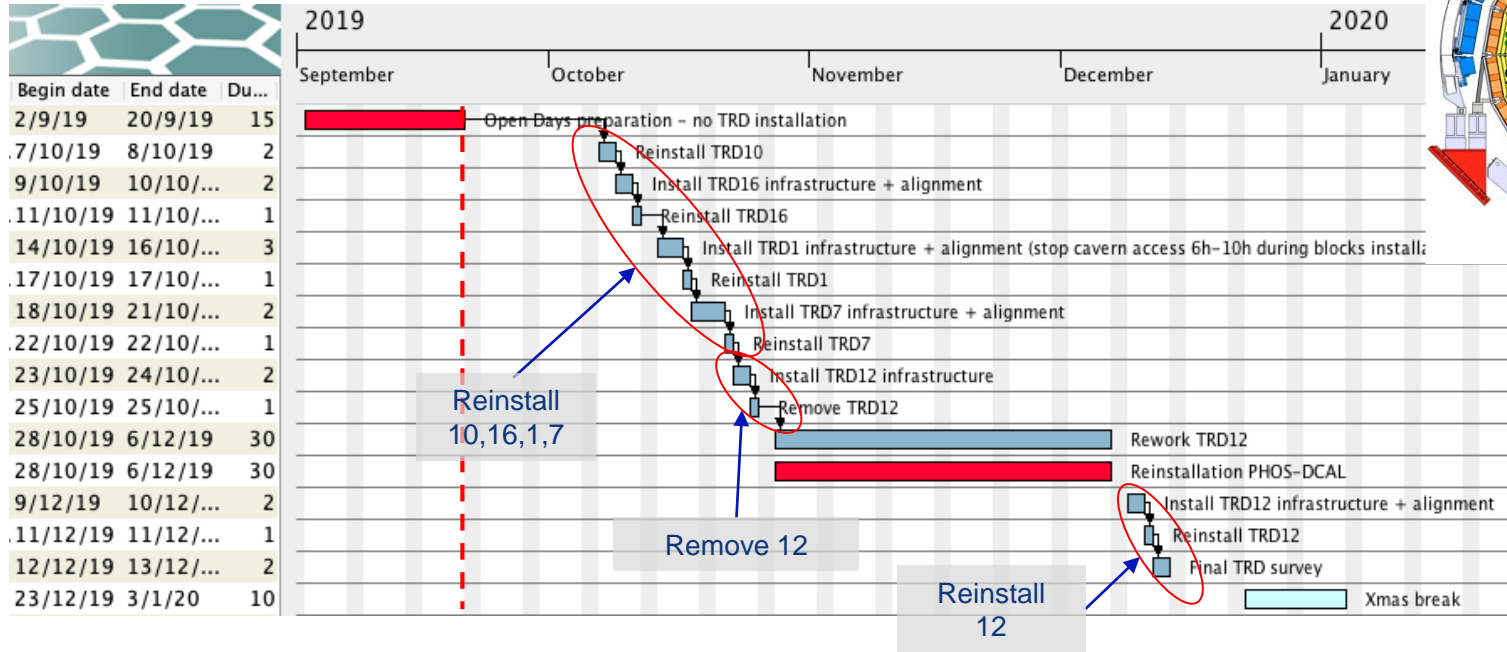
EN-EL interventions

- Test secours (10 min): 19 Dec 2019 from 8:00 AM to 11:00 AM
- 18kV, 3.3kV and LV network maintenance:
 - Mon 20 to Wed 22 Jan 2020: 3 days no general services - **no access on site (both surface and underground)**
 - Thu 23 to Fri 24 Jan 2020: 2 days "Limited access" → details to be worked out
- AUG on Monday 27 January 2020 - **no access on site (both surface and underground)**
- Auto transfer test: 27-29 Apr 2020
- BIW test: 5 and 6 Oct 2020 from 18:00 to 00:00 – **no access underground**

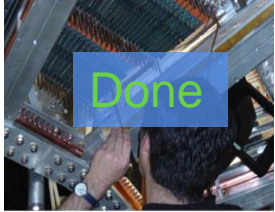
EN-CV interventions

- **Big maintenance:**
 - SF: from Nov 2019 to mid Jan 2020. NO impact on ALICE as both magnets will be OFF.
 - UW: **stop UX mixed water** for 2 days in week 40/2019 (October).
 - SU: various small perturbations + 1 day **stop all cooling UX** + 1 day **stop all cooling SXL2** in week 16/2020 (April).
- **Small maintenance:**
 - UW: from mid Aug 2020 to mid Sep 2020. **Stop mixed water UX** for 1 day in week 37/2020 (September).
 - SF+SU: weeks 45-47/2020: cleaning towers (stop SF 1 week) + 1 day **stop all cooling UX**.
- **Ventilation:**
 - SG2: w7/2019 - Done
 - Gas extraction: w8/2019 - Done
 - UX25 cavern: May 2020 (tbc)
 - MCH and MTG: Apr 2020 (tbc)
 - L3: Apr 2020 (tbc)
 - ITS: Apr 2020 (tbc)
- **Raw water:**
 - Test after Apr 2019. Short interruption (1 day), can be used tap water during the test.

TRD schedule



TPC upgrade sequence



Remove Services and FEE
(outside cleanroom)



Uninstall MWPC ROC



Install GEM ROC



Install new FEC + test



Transportation to SX2



TPC in cleanroom.
Cleaning & irradiation tests

7 Mar

11 Apr



FC HV infrastructure
modification

25 Apr (A)
5 Aug (C)

13 May (A)
16 Aug (C)



Survey, sealing,
overpressure test

14 Jun (A)
25 Aug (C)

5 Jul (A)
9 Sep (C)



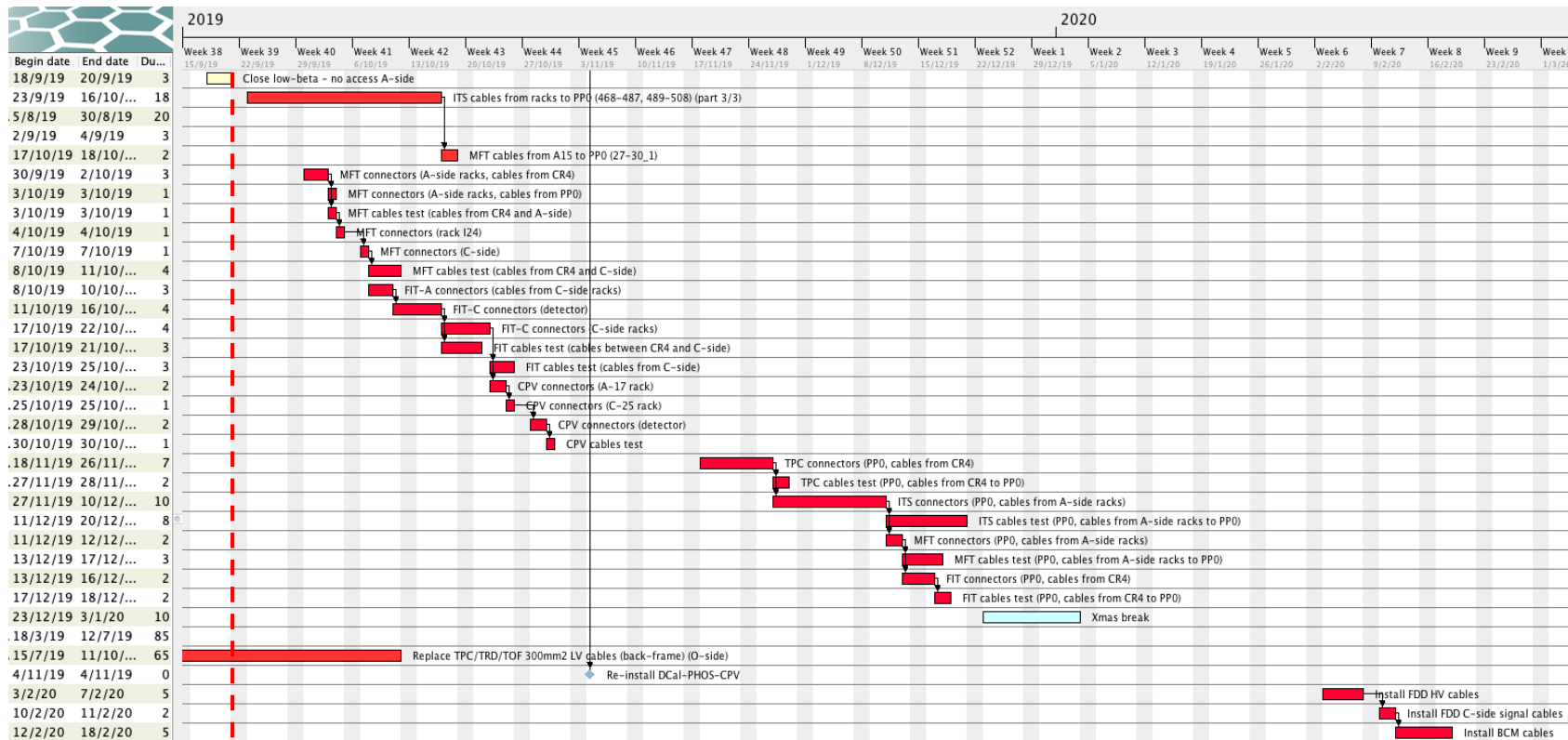
Pre-commissioning with
cosmic, Laser, pulser, Xray

1 Oct (A)
22 Oct (C)

31 Oct (A)
4 Dec (C)

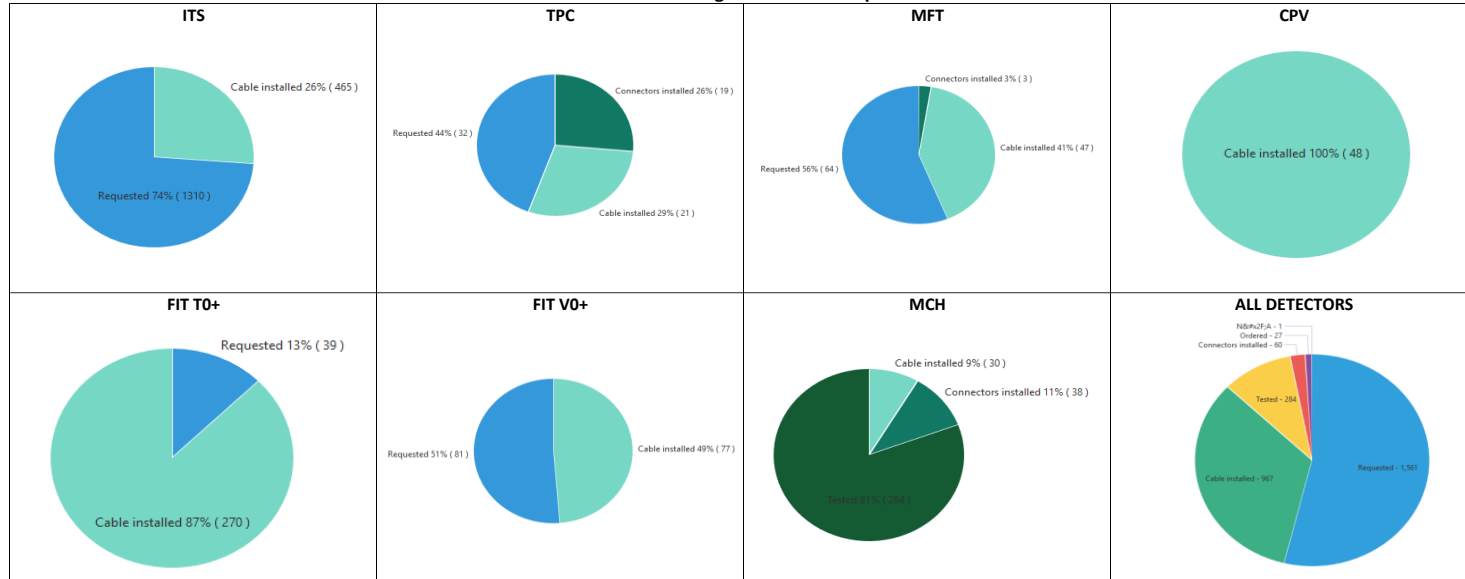
18 Feb 2020

Copper cables (EN-EA)



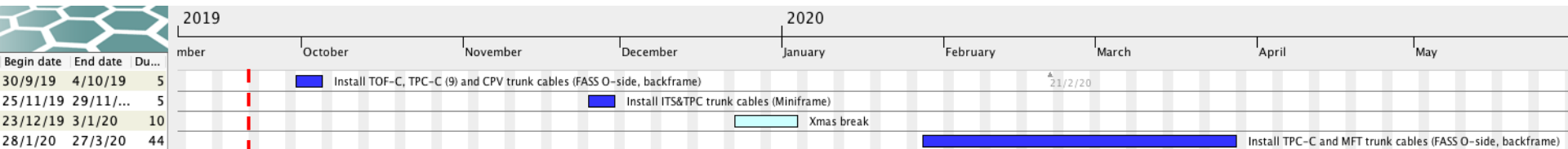
Copper cables (EN-EA)

ALICE LS2 - EN-EA cabling control follow-up 20-09-2019

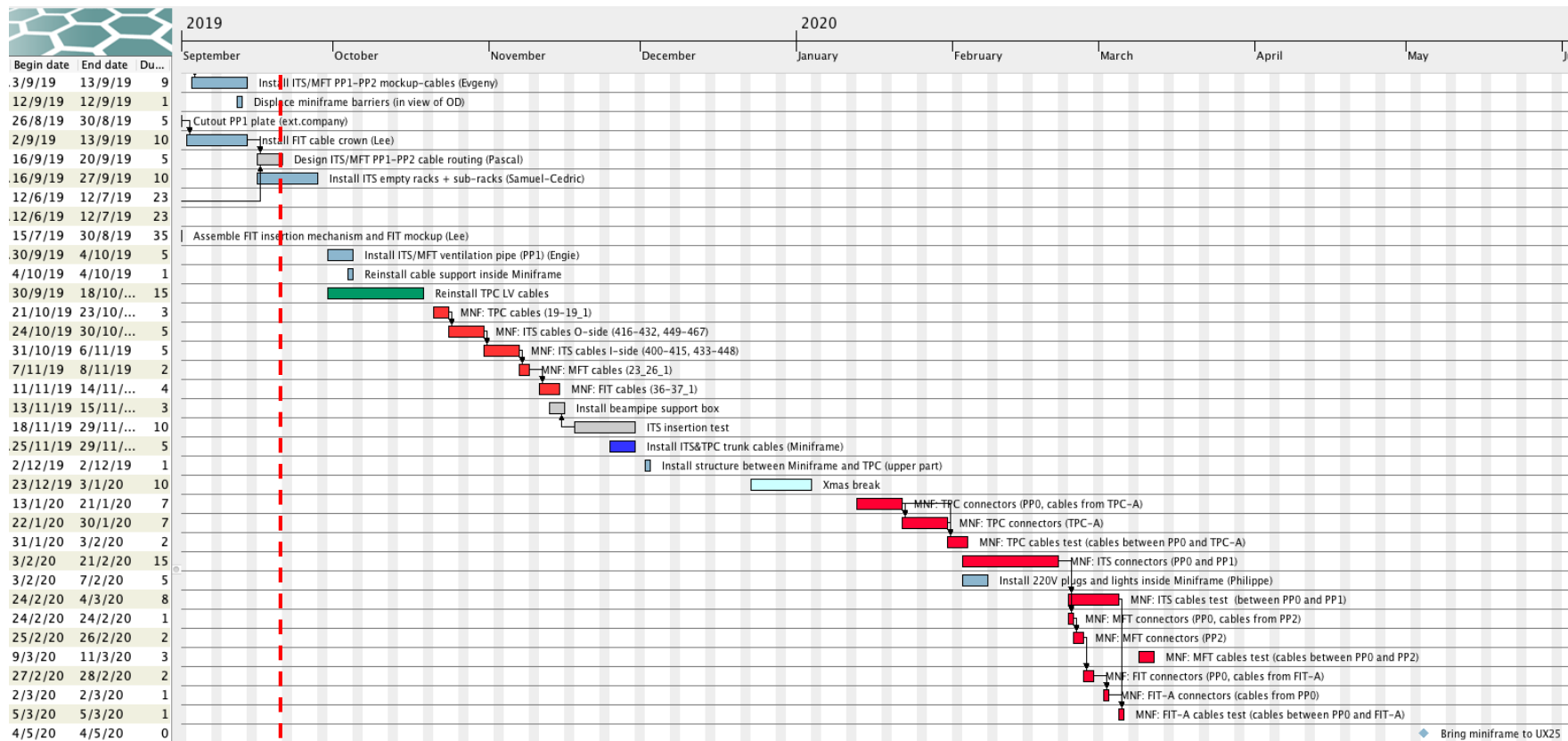


Completed 46%

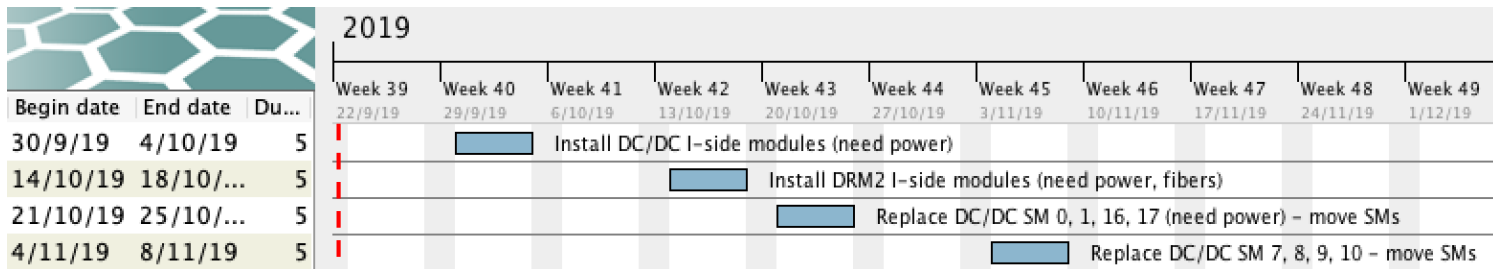
Optical fibers (EN-EL)



Miniframe planning



TOF planning



Day-by-day sequence w38



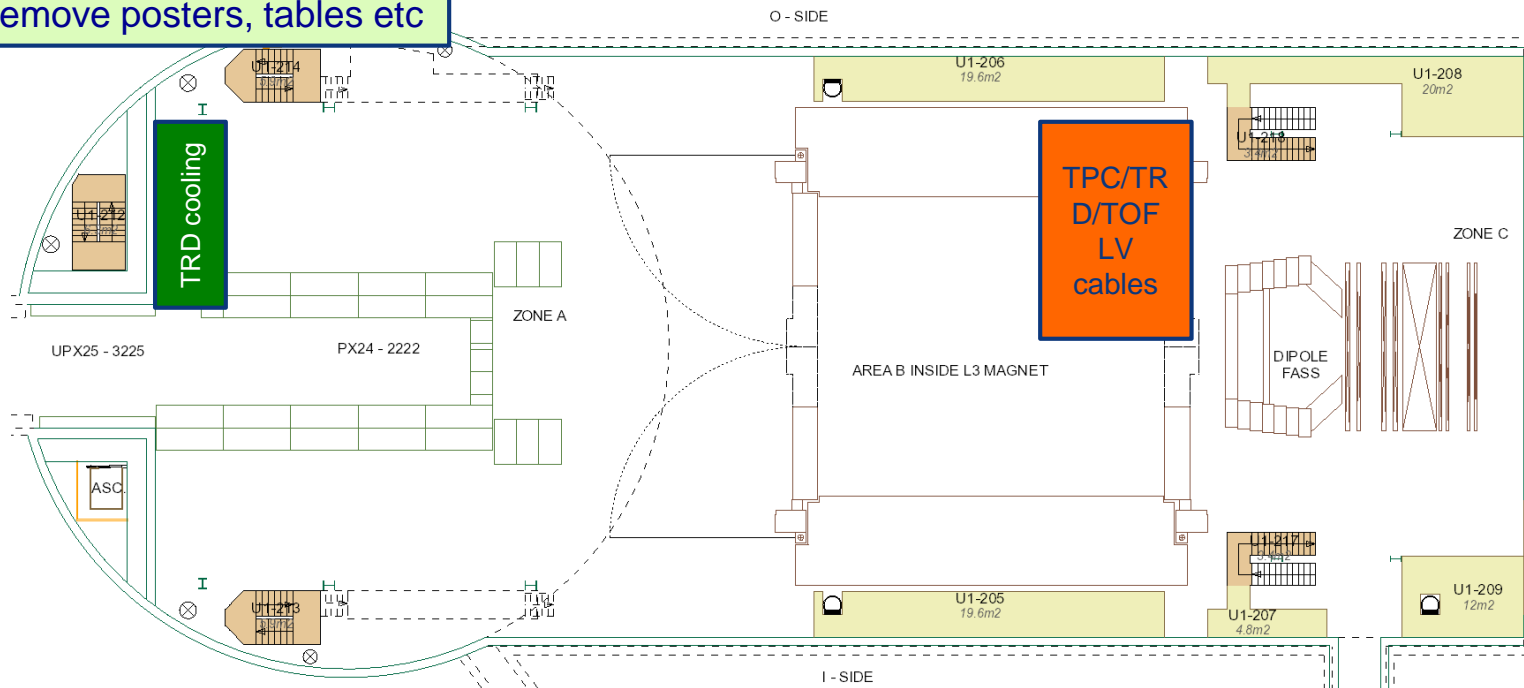
UX25 activities w38 – Mon 16 Sep 2019

CR0: install humidifier pipe (ENGIE) – Mon-Wed

OD: remove tents

CR0: open Roxtecs IT1-2-3 (for ENGIE/Bruno) – Leave IT4 closed!

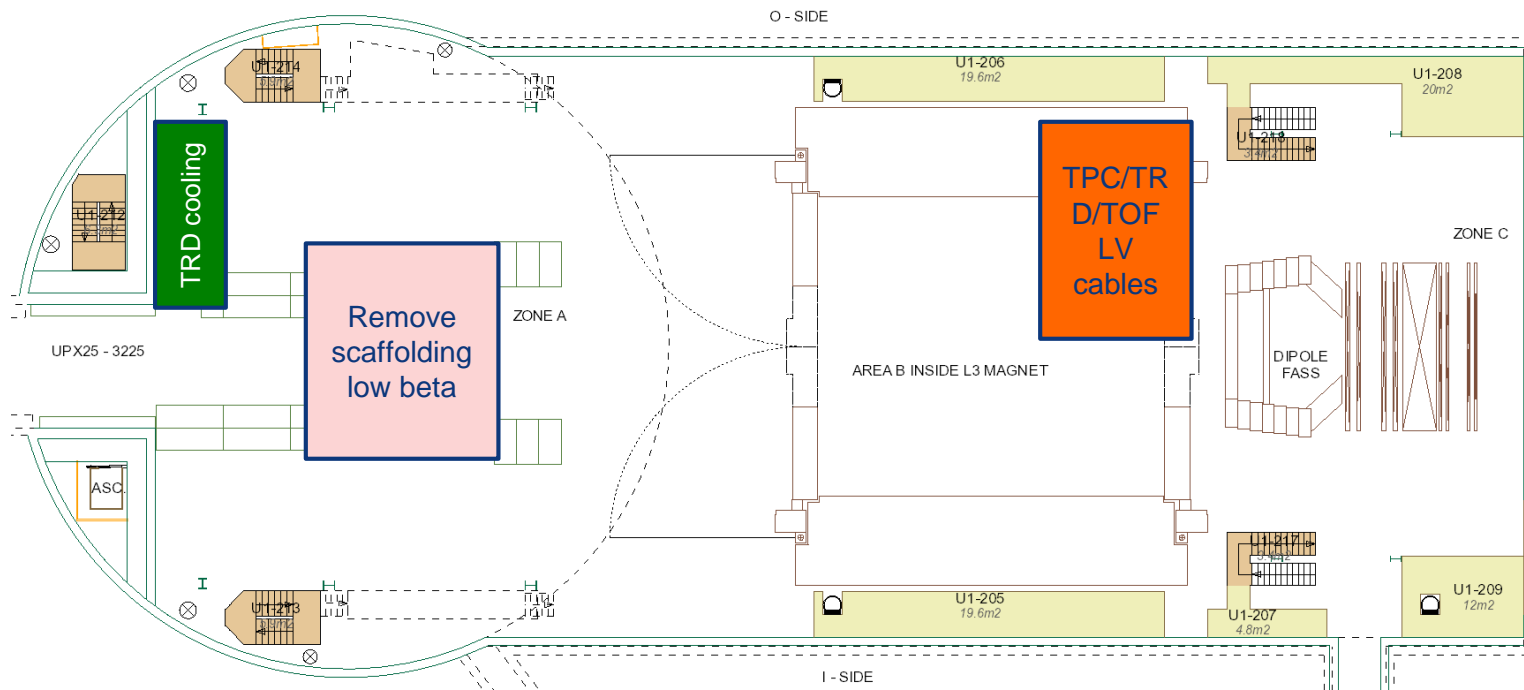
OD: remove posters, tables etc



UX25 activities w38 – Tue 17 Sep 2019

TE-EPC: send L3 transformer to Germany

ALTEAD: pallets for EN-EA (8+1) + material OD + L3 transformer



UX25 activities w38 – Wed 18 Sep 2019

ALTEAD: bring low-beta blocks into SX2

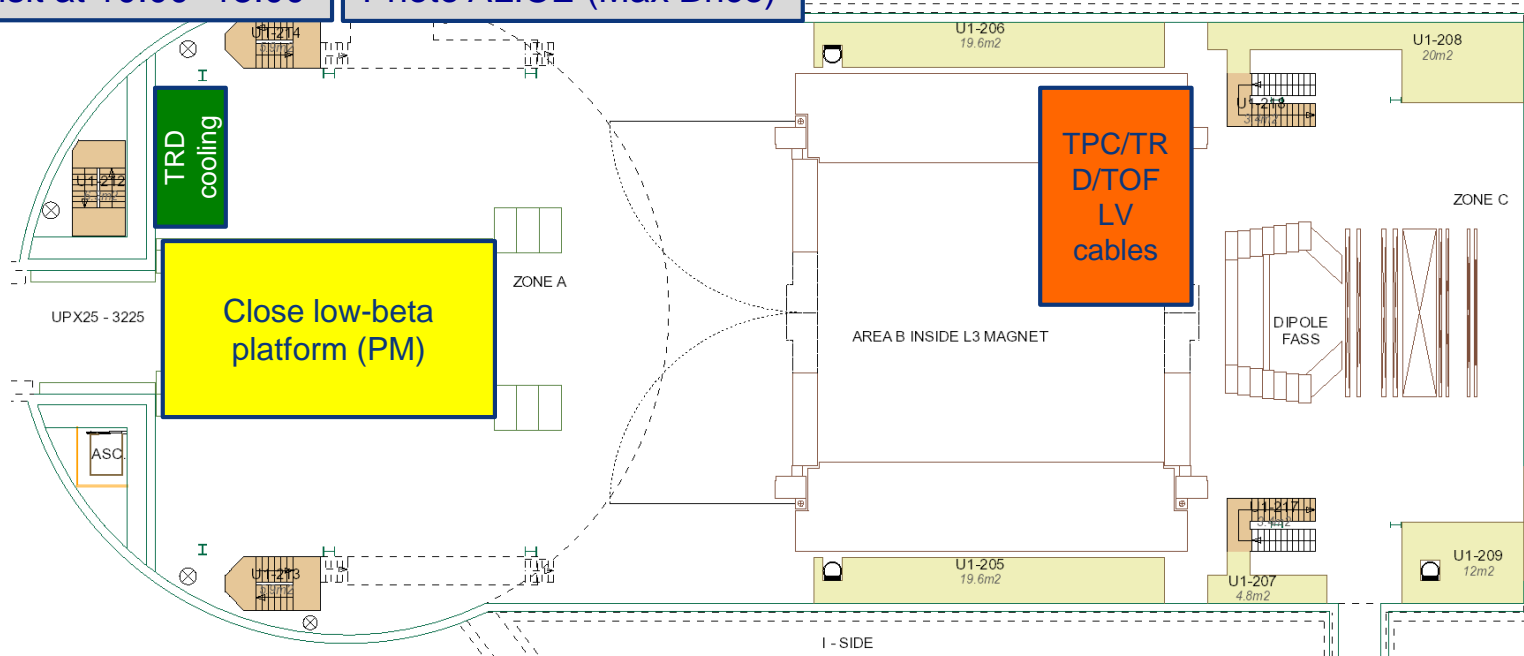
ALTEAD: bring DCal back into SU2 (after 13:00)

ALTEAD: help removing CR0 load banks (2 people)

CR0: open Roxtecs IT4 (for ENGIE/Bruno)

VIP visit at 10:00 -13:00

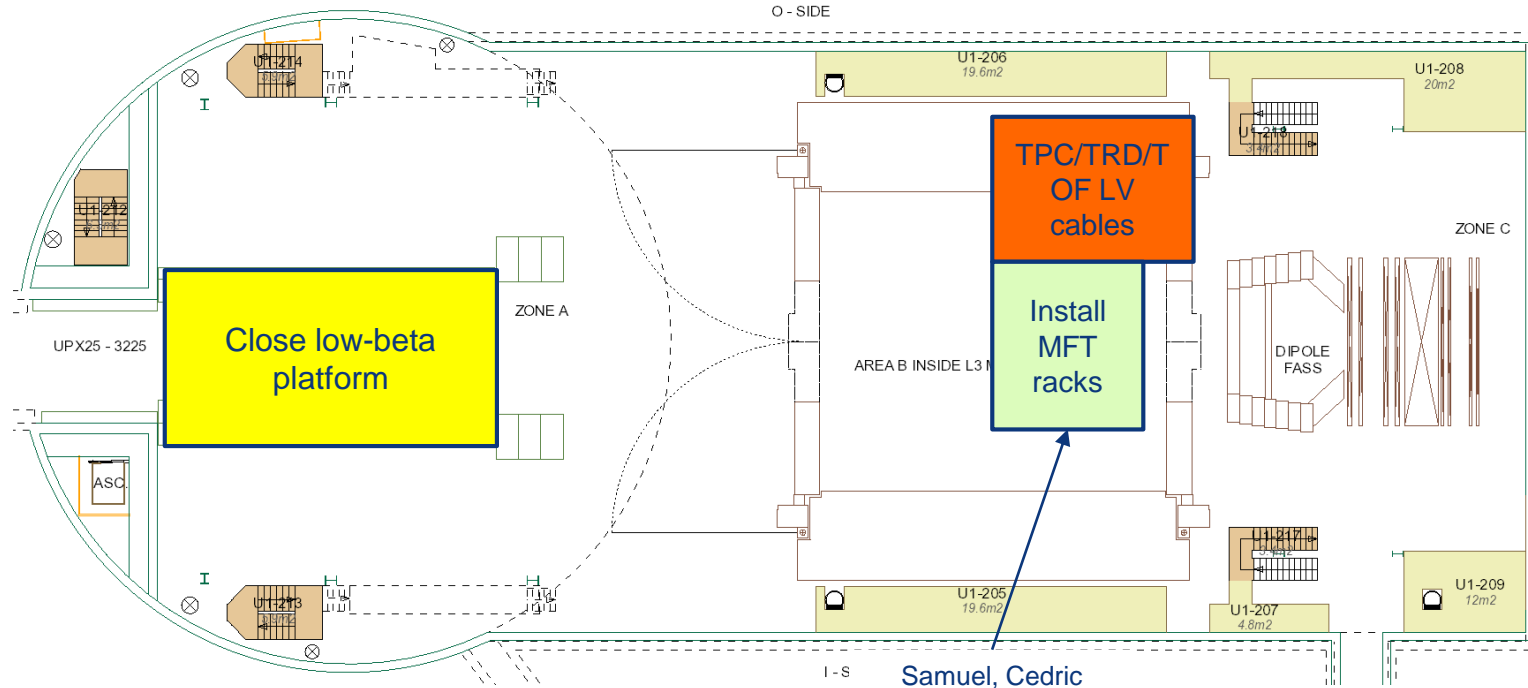
Photo ALICE (Max Brice)



UX25 activities w38 – Thu 19 Sep 2019

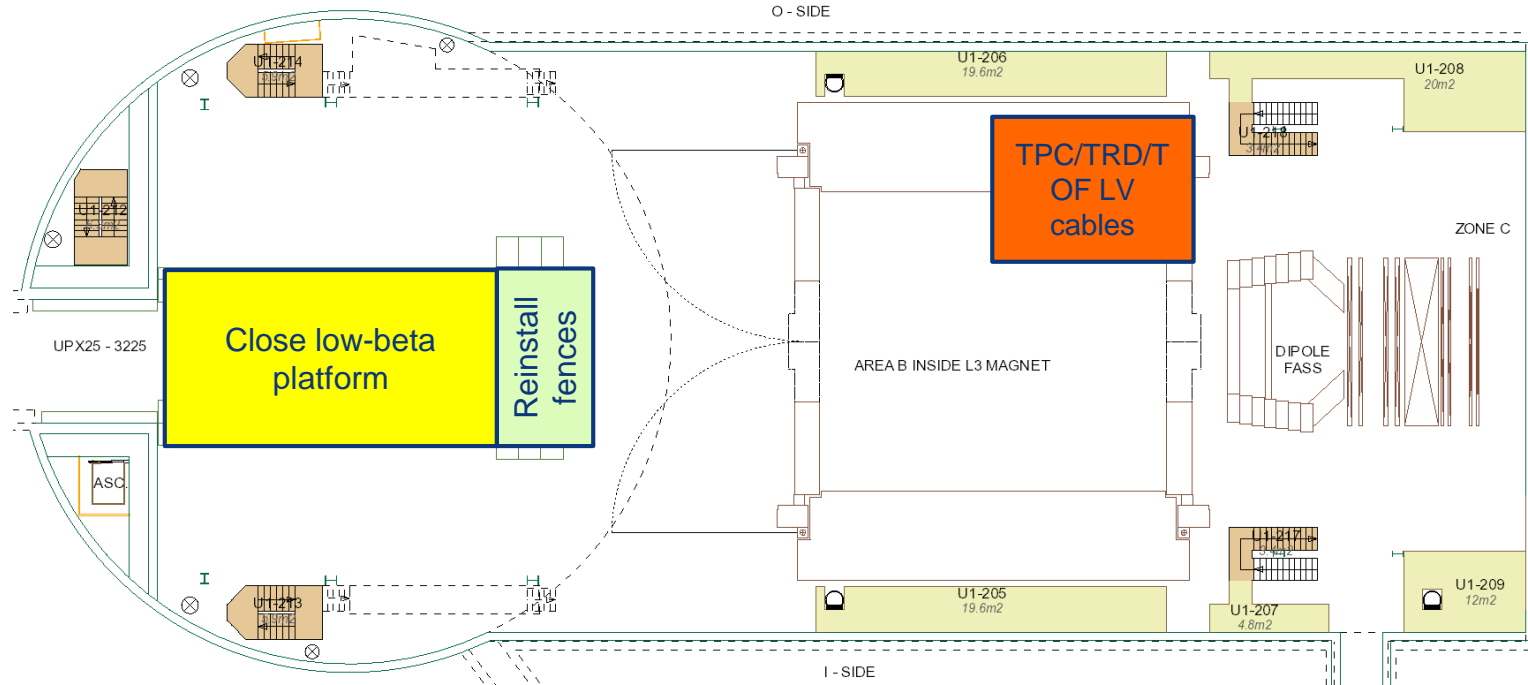
No access to A-side (up to L3 magnet) due to transport of blocks. No visits before 18:00

VIP visit at 11:55 - 12:30

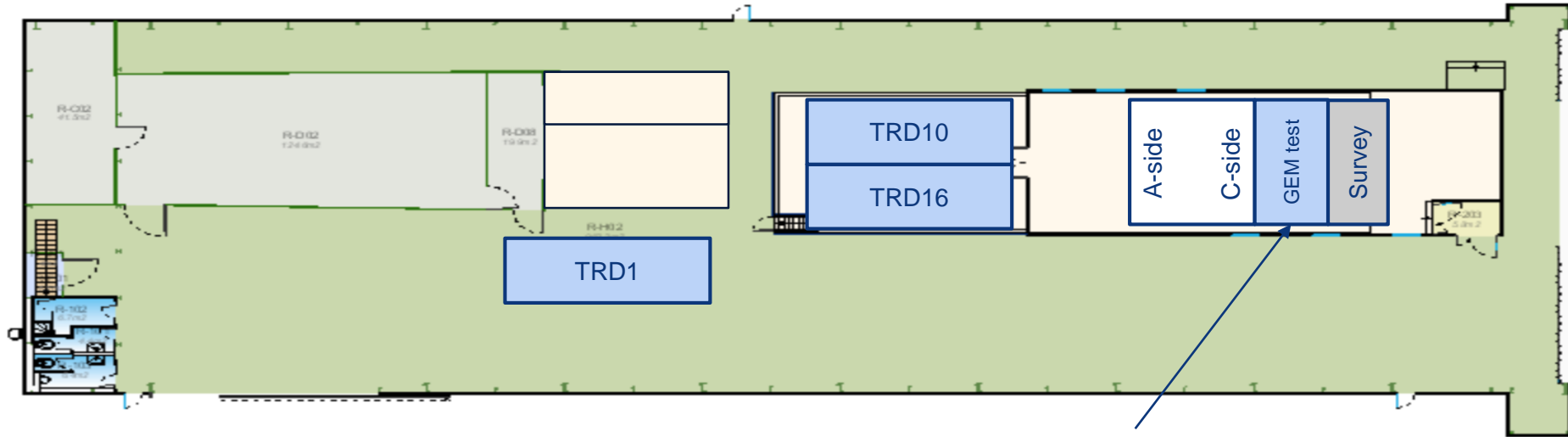


UX25 activities w38 – Fri 20 Sep 2019

Visit (Alex) 10:30 – 11:30



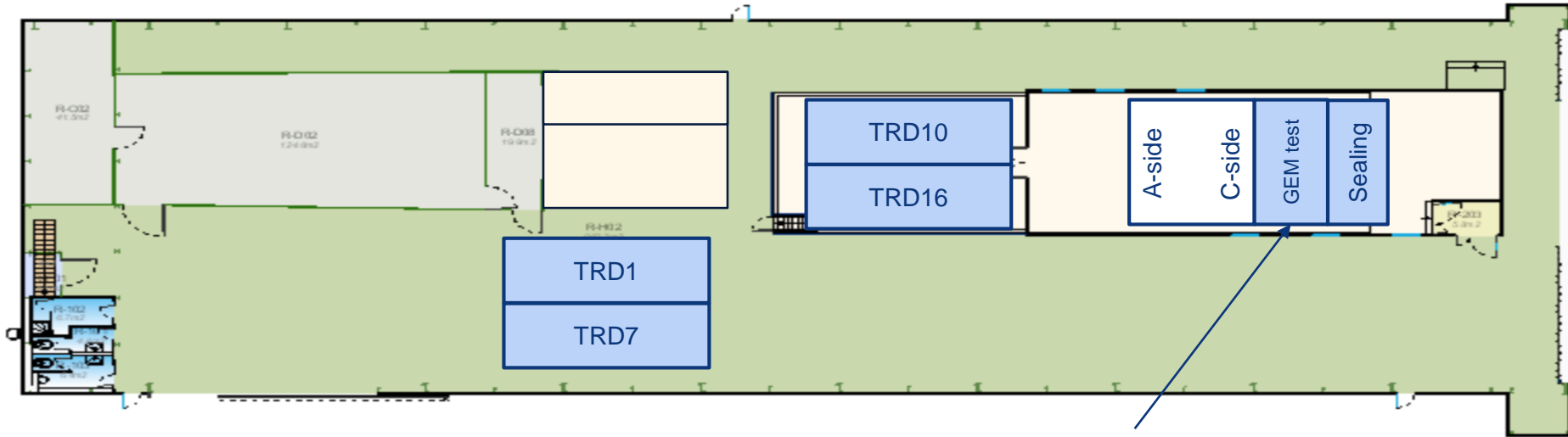
SXL2 activities w38 – Mon 16 Sep 2019



Fill TPC with dry air and test GEMs (leakage current test)
+
FC powering test with Air and GEMs grounded

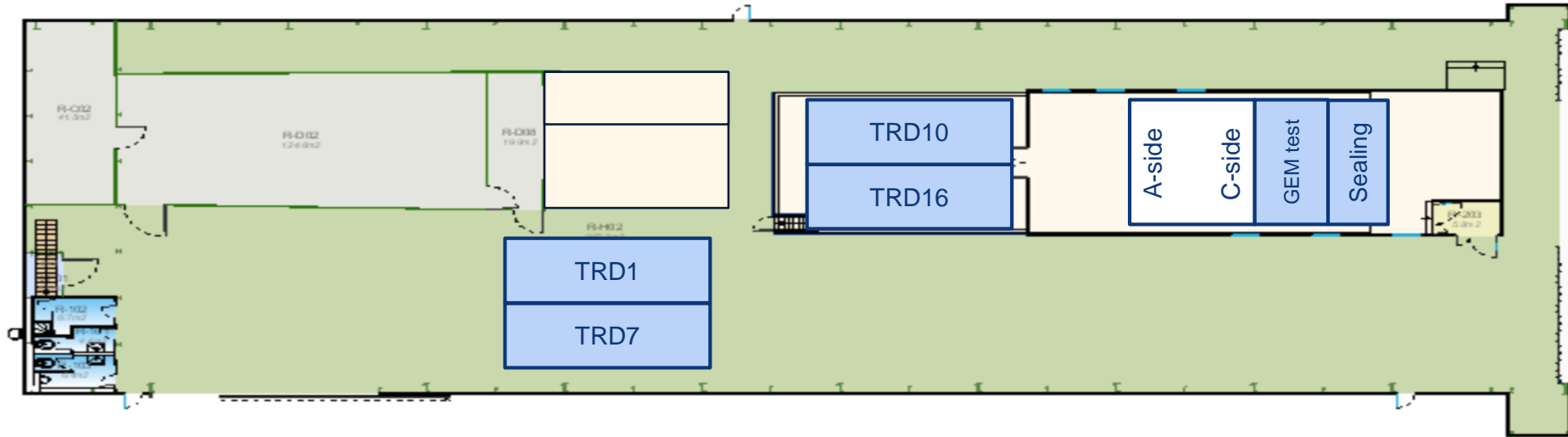
SXL2 activities w38 – Tue 17 Sep 2019

ALTEAD: bring TRD7 into SX2

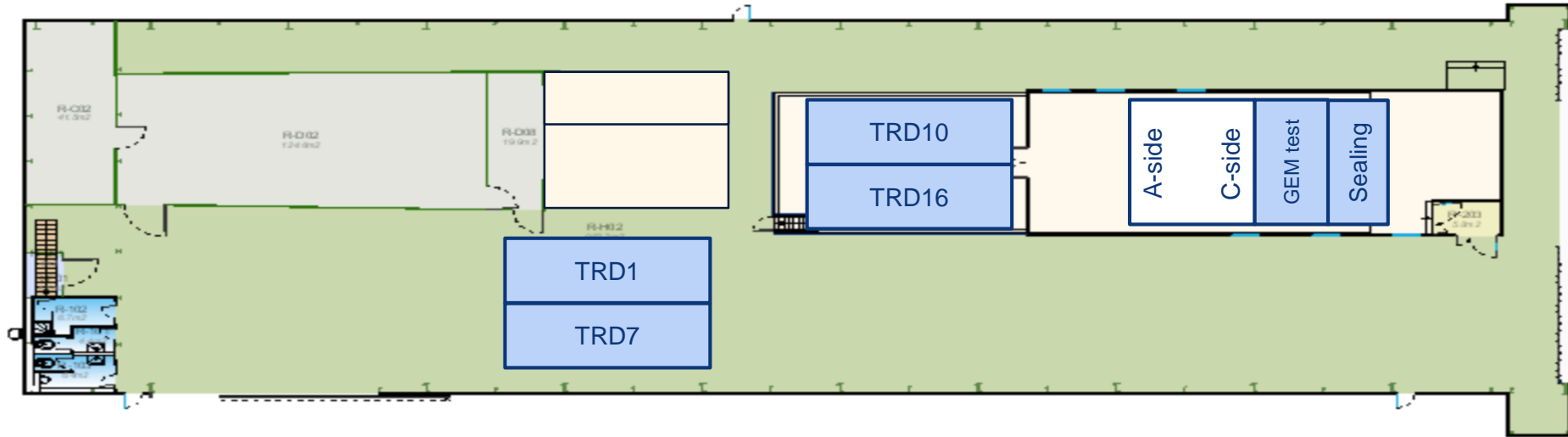


On C side: Reinstall laser prism, splitter and camera boxes.
Align with laser

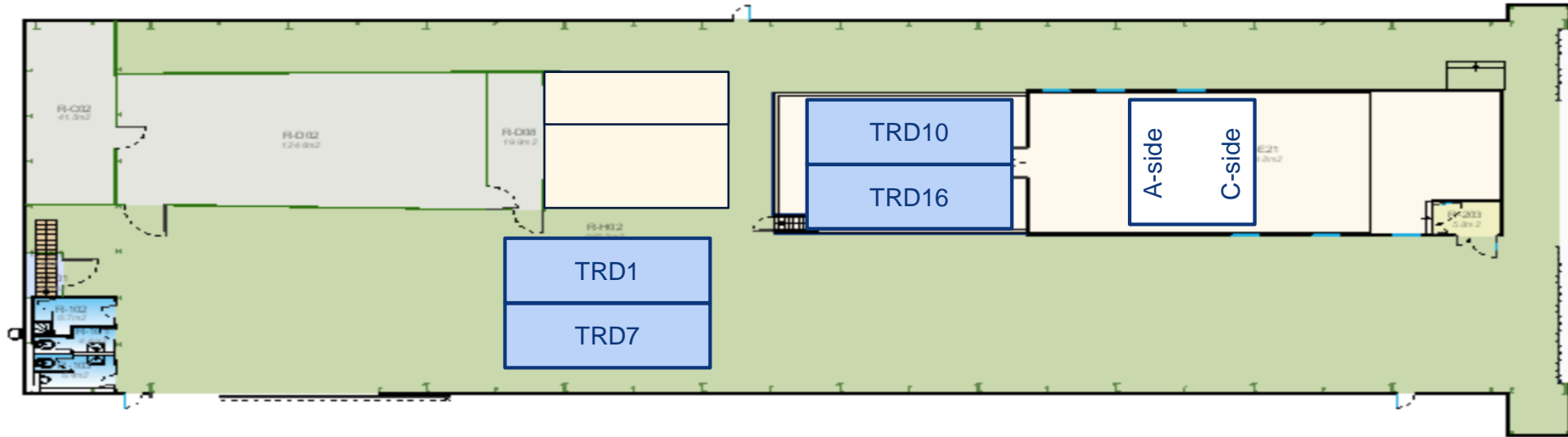
SXL2 activities w38 – Wed 18 Sep 2019



SXL2 activities w38 – Thu 19 Sep 2019

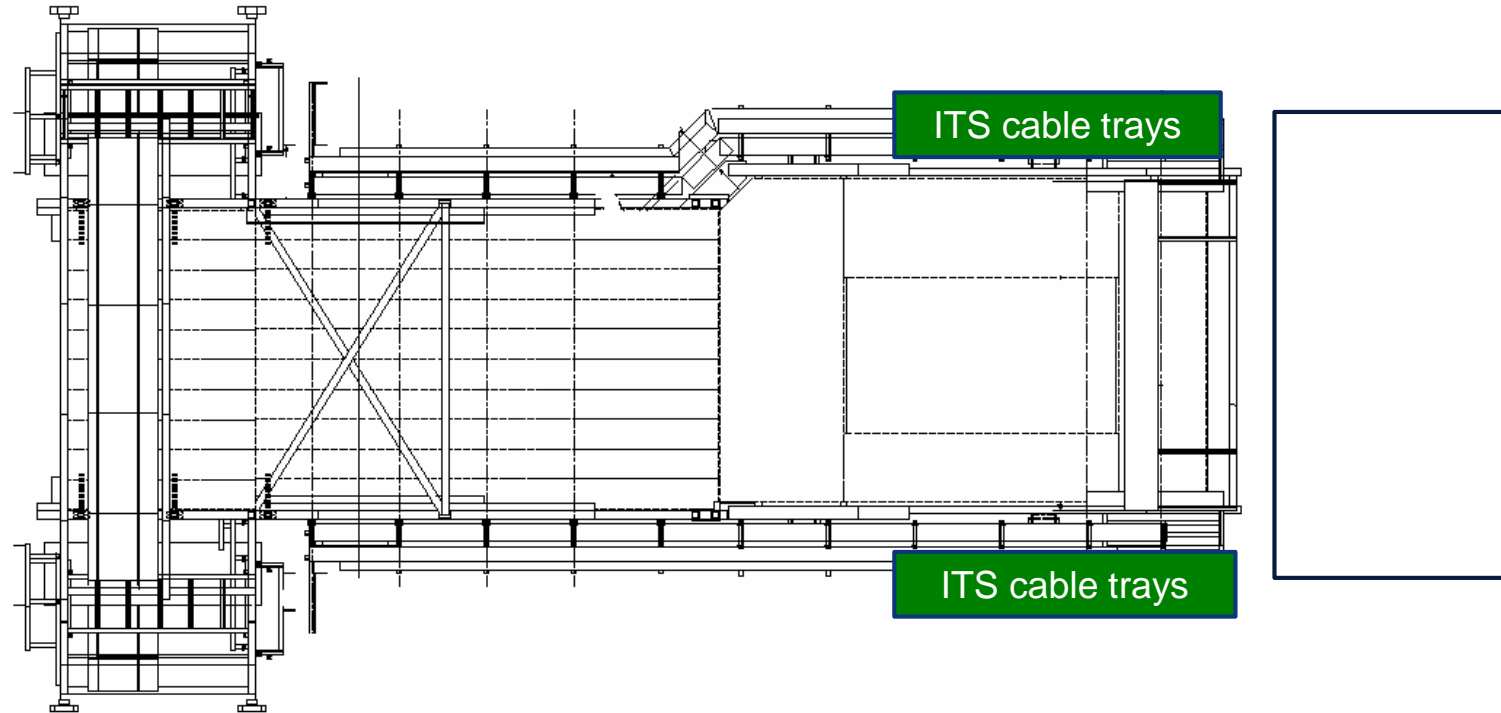


SXL2 activities w38 – Fri 20 Sep 2019

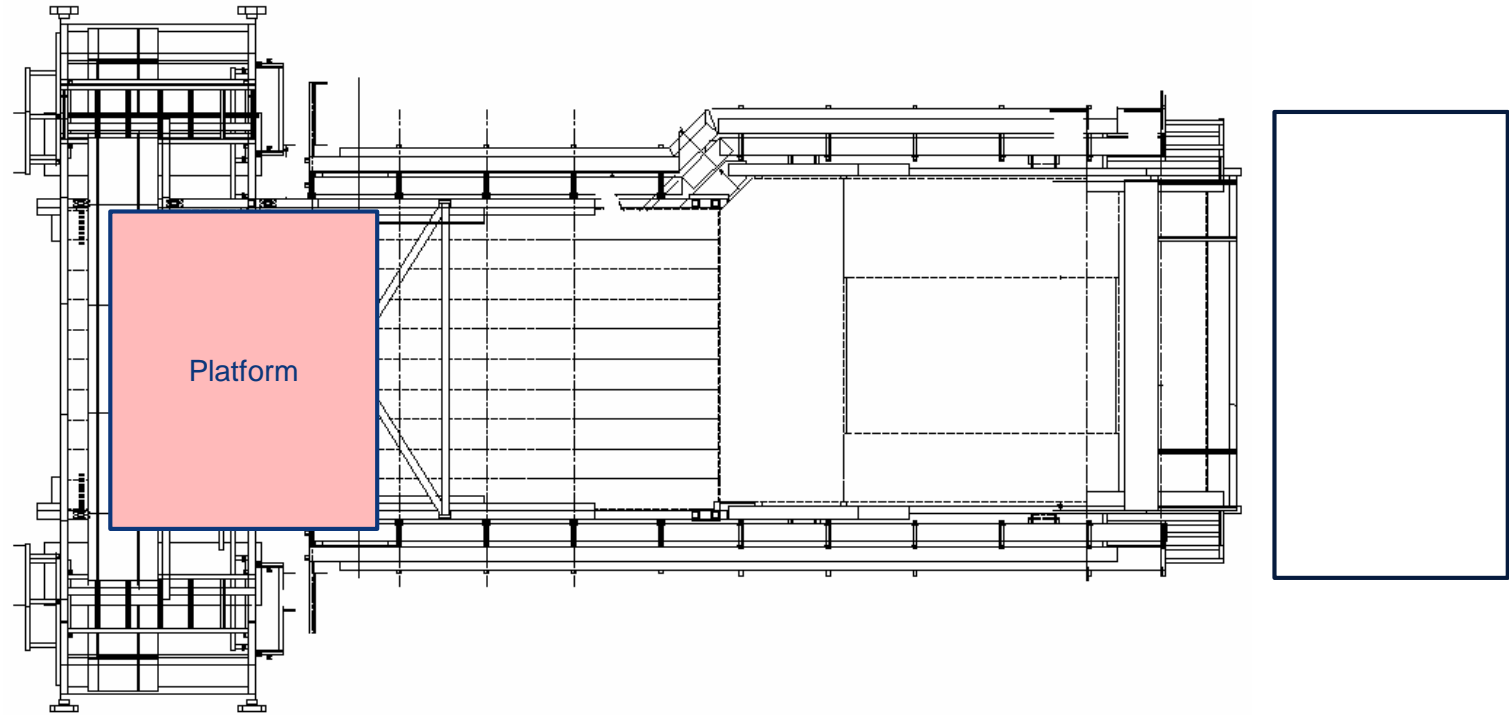


Miniframe activities w38 – Mon 16 Sep 2019

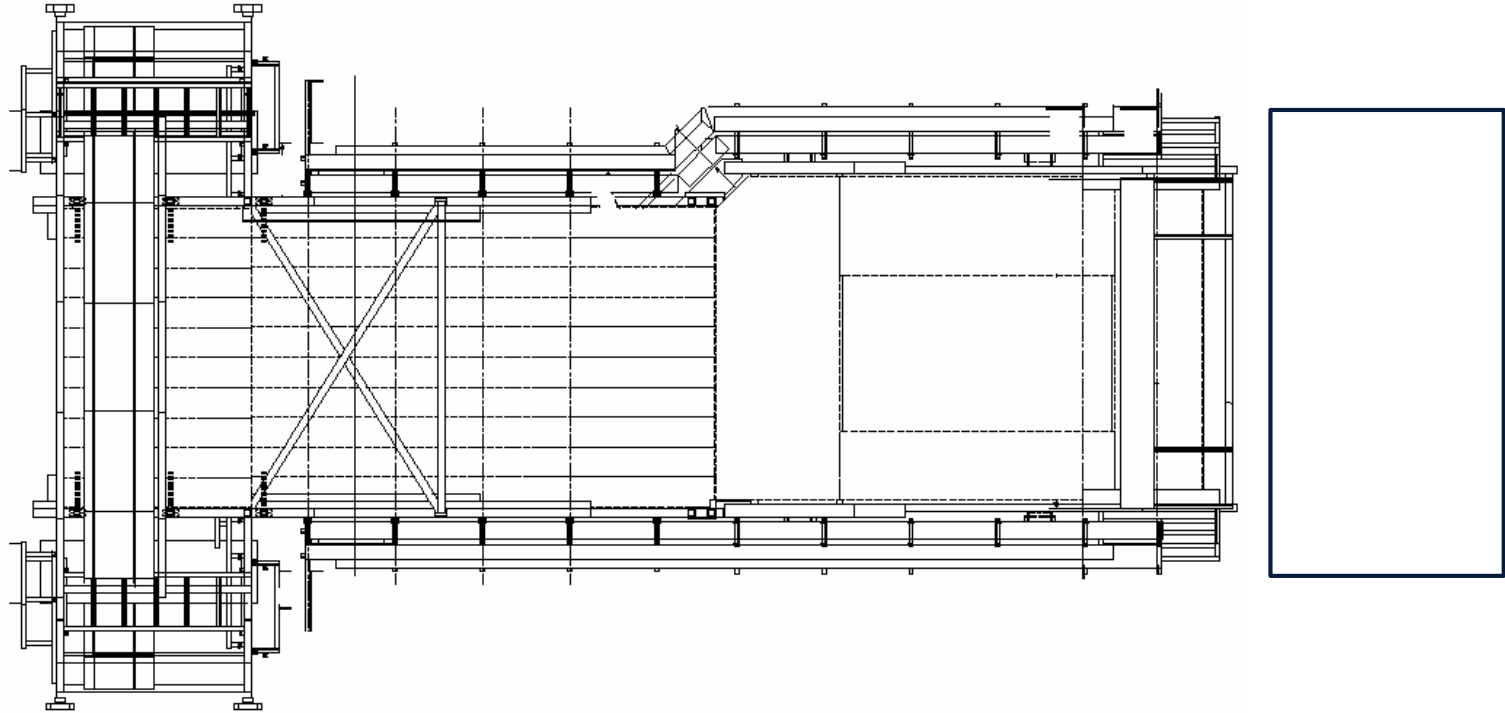
Pressure test inox pipes (Rampower)



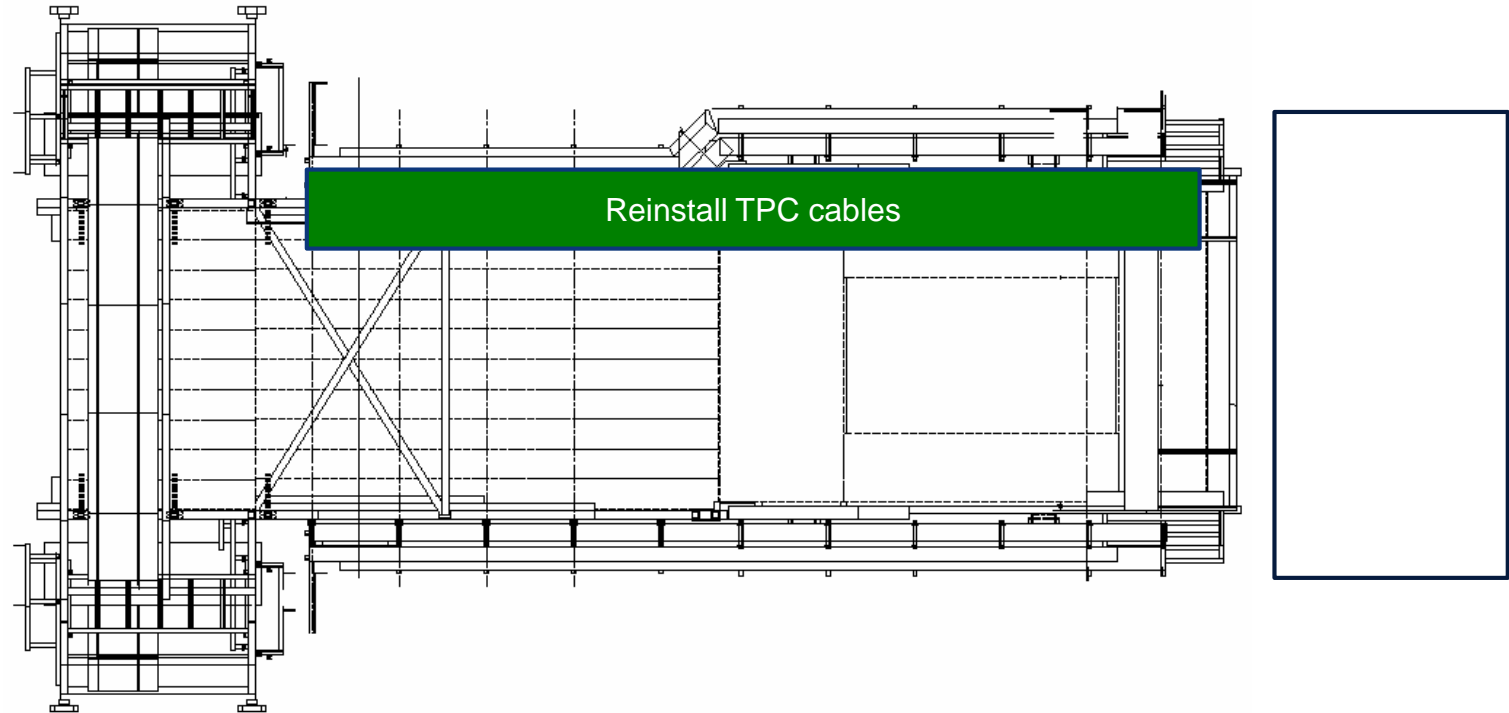
Miniframe activities w38 – Tue 17 Sep 2019



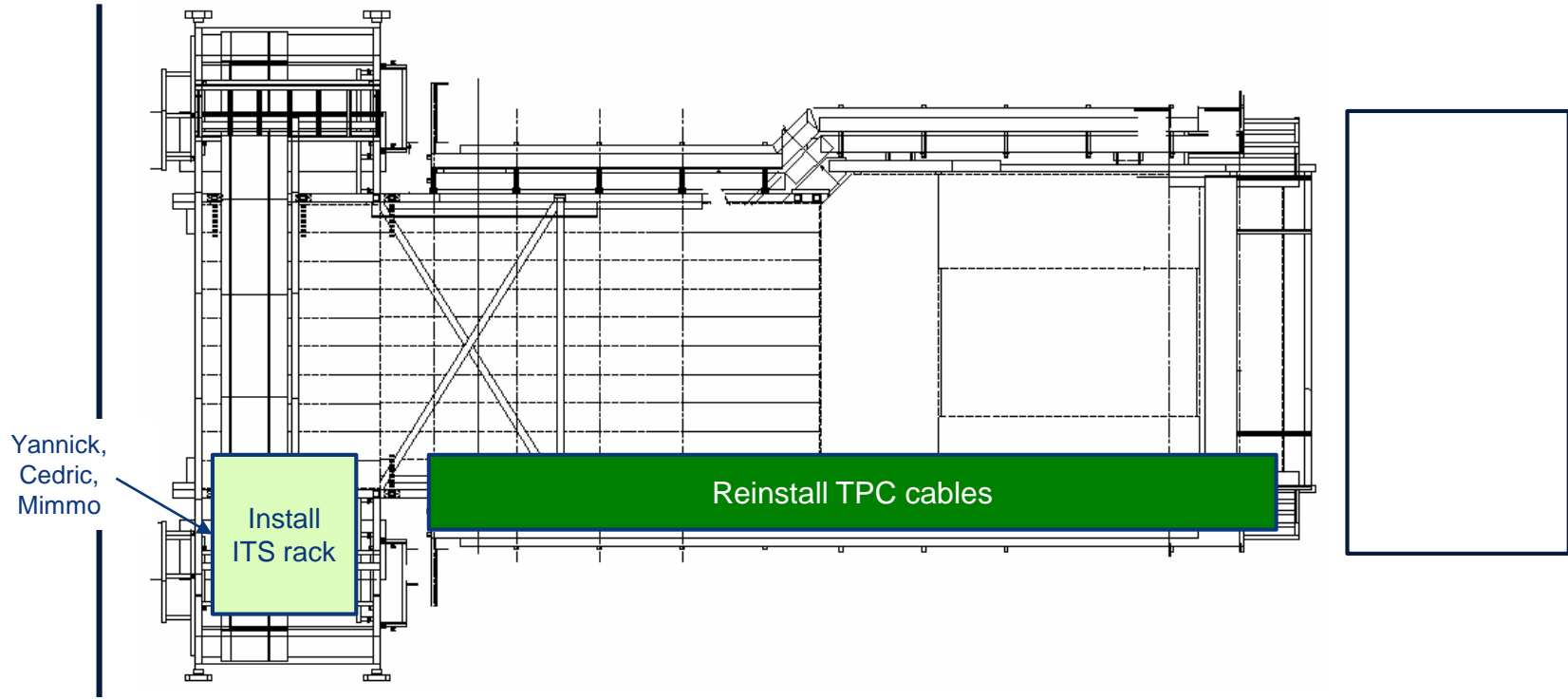
Miniframe activities w38 – Wed 18 Sep 2019



Miniframe activities w38 – Thu 19 Sep 2019



Miniframe activities w38 – Fri 20 Sep 2019

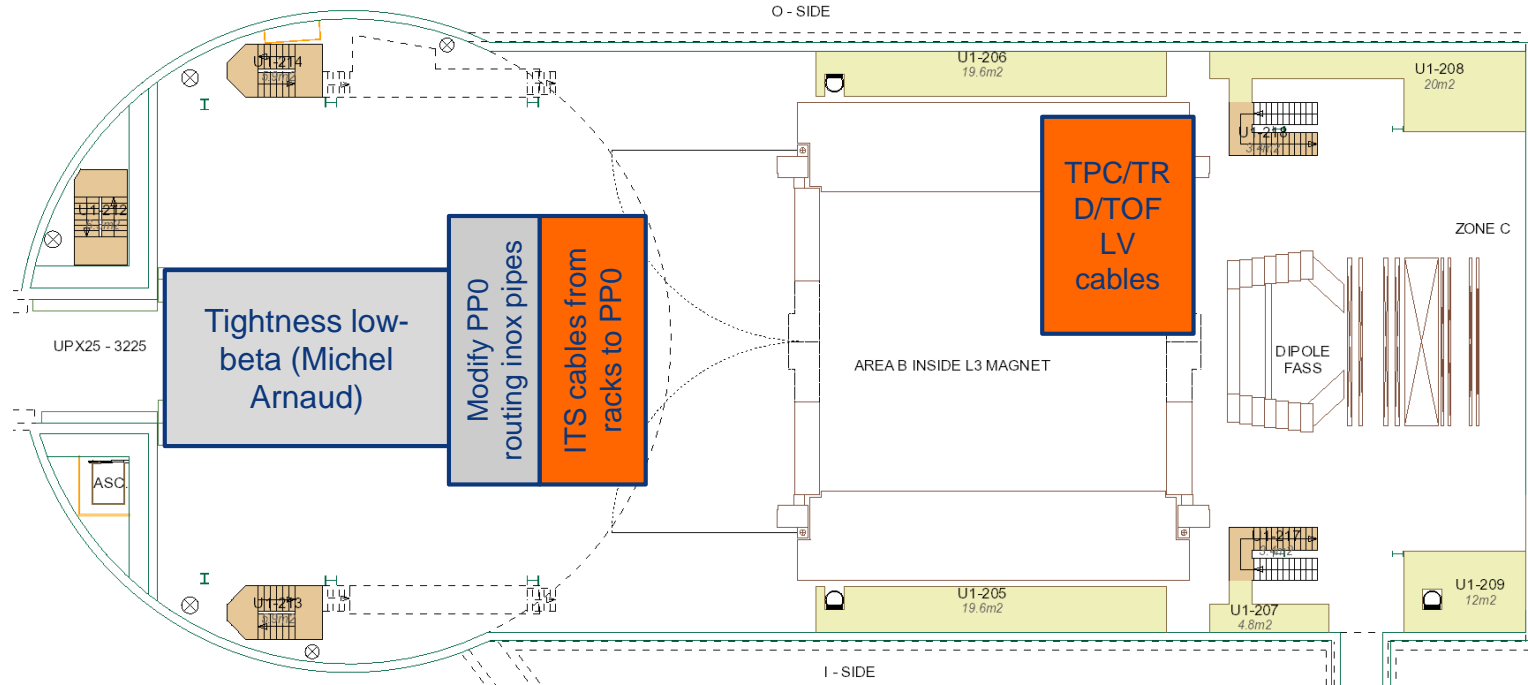


Day-by-day sequence w39

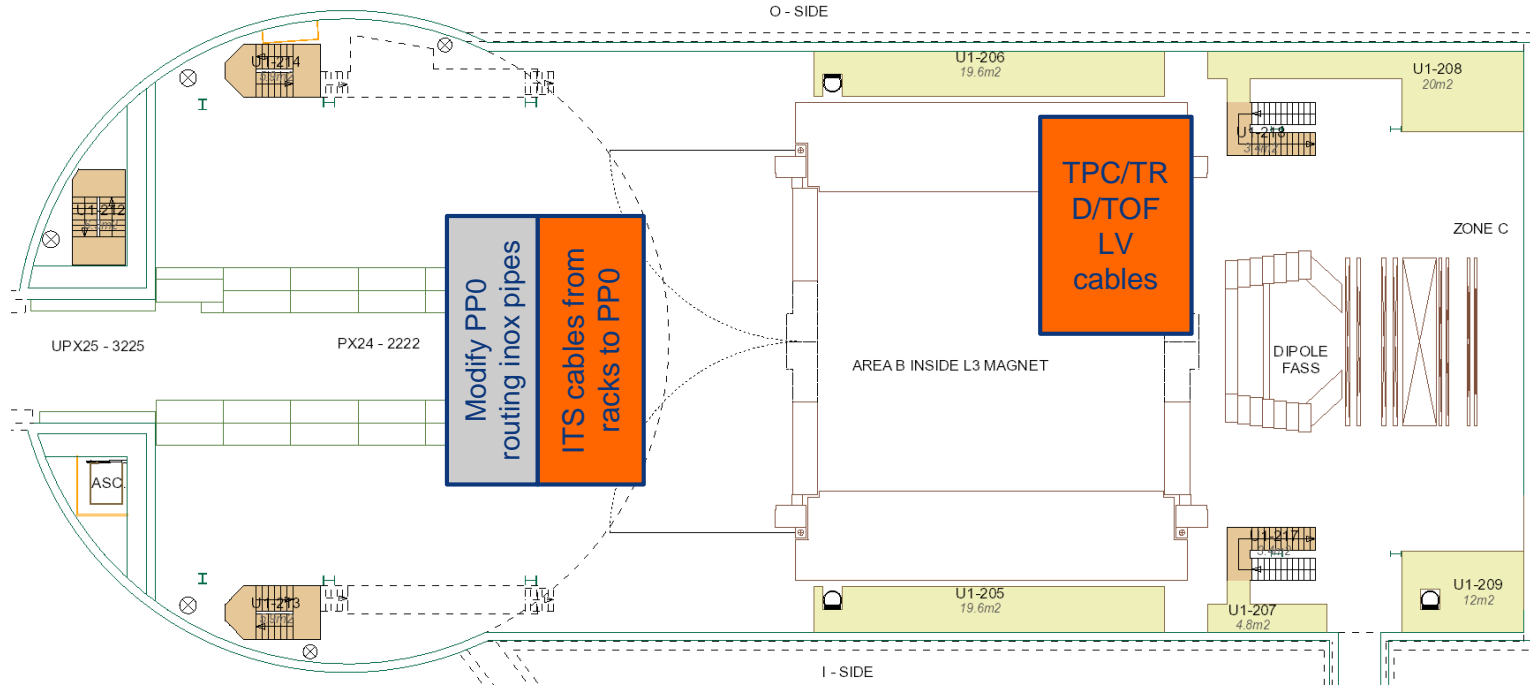


UX25 activities w39 – Mon 23 Sep 2019

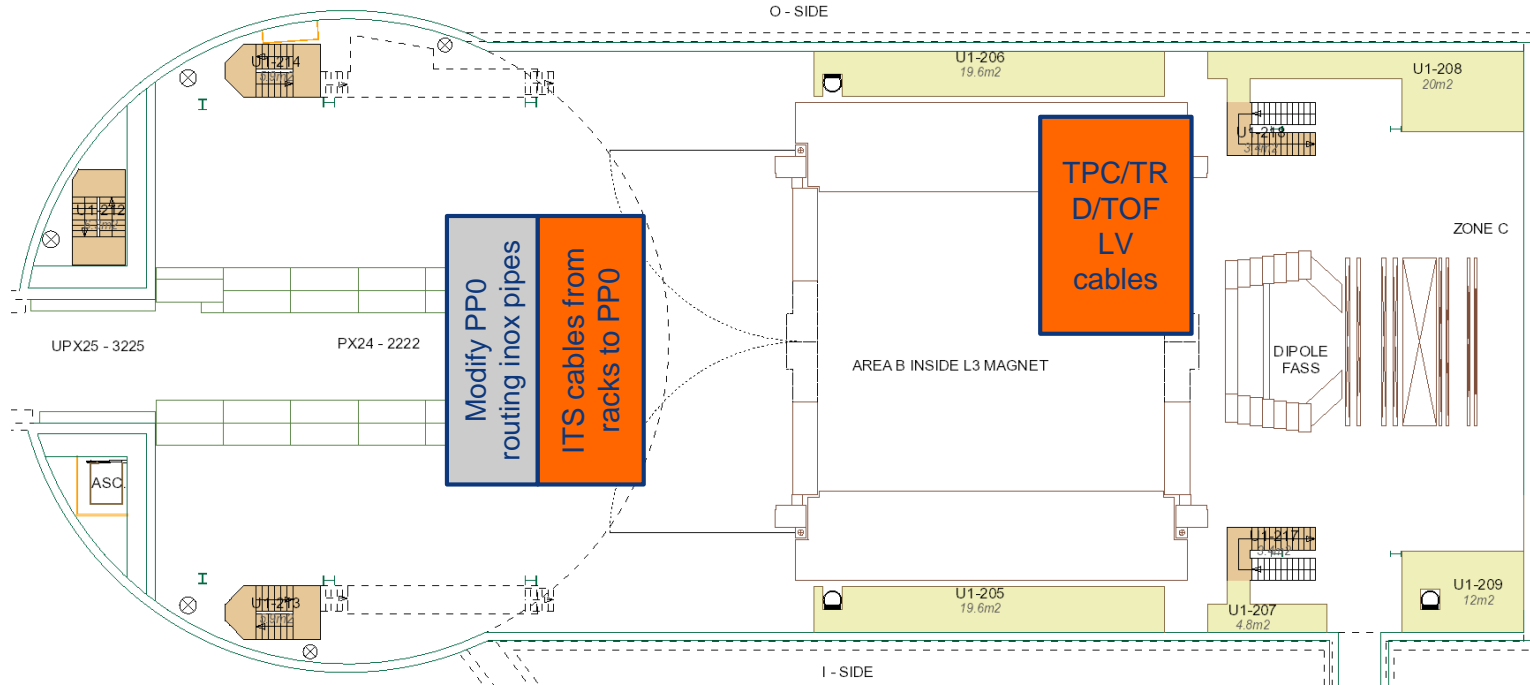
CR0: install fire detection system (whole week)



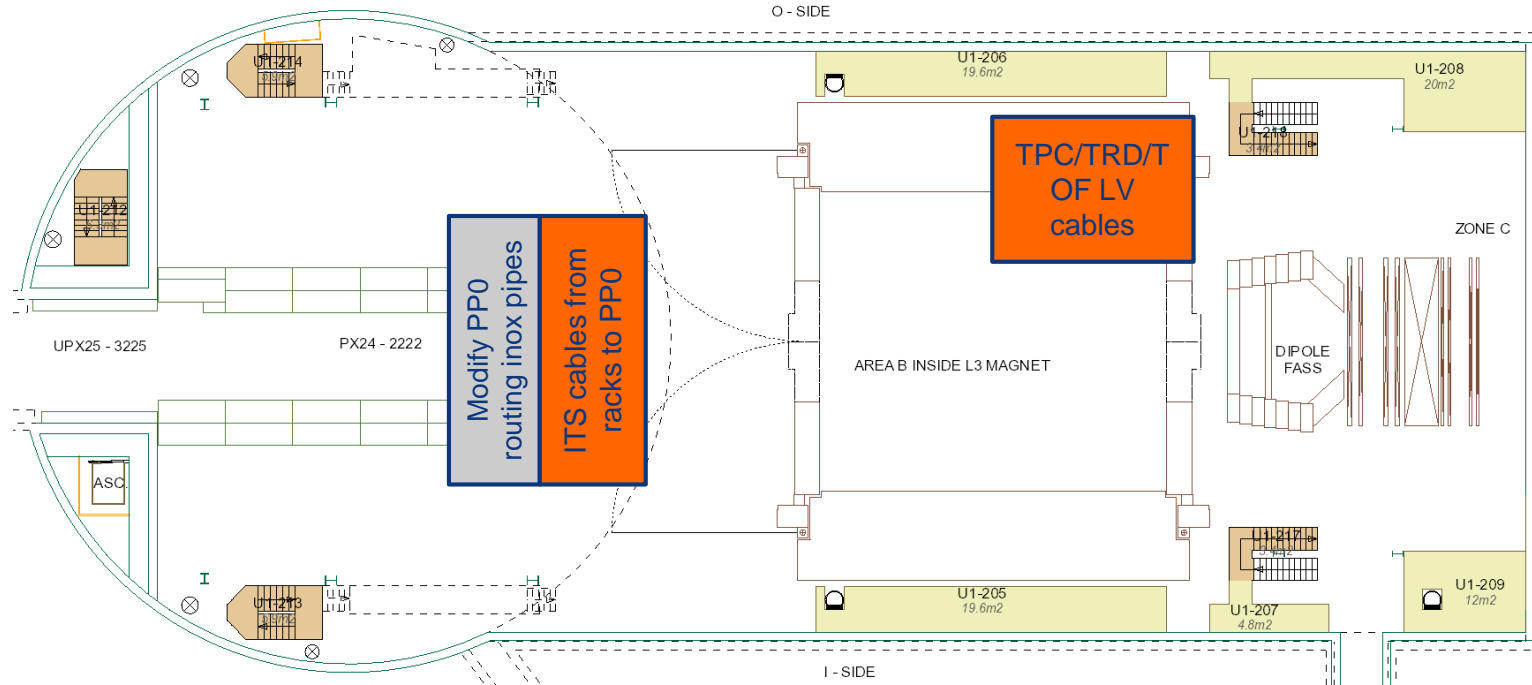
UX25 activities w39 – Tue 24 Sep 2019



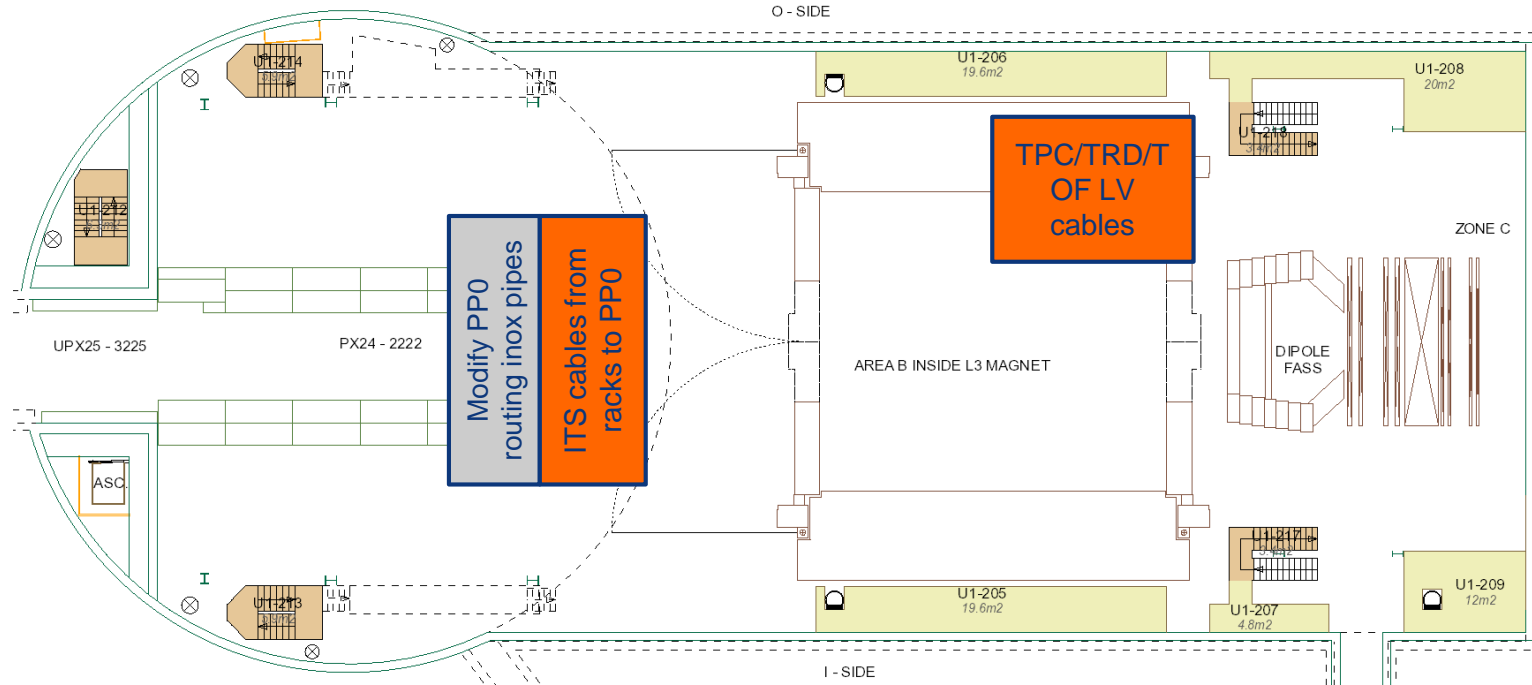
UX25 activities w39 – Wed 25 Sep 2019



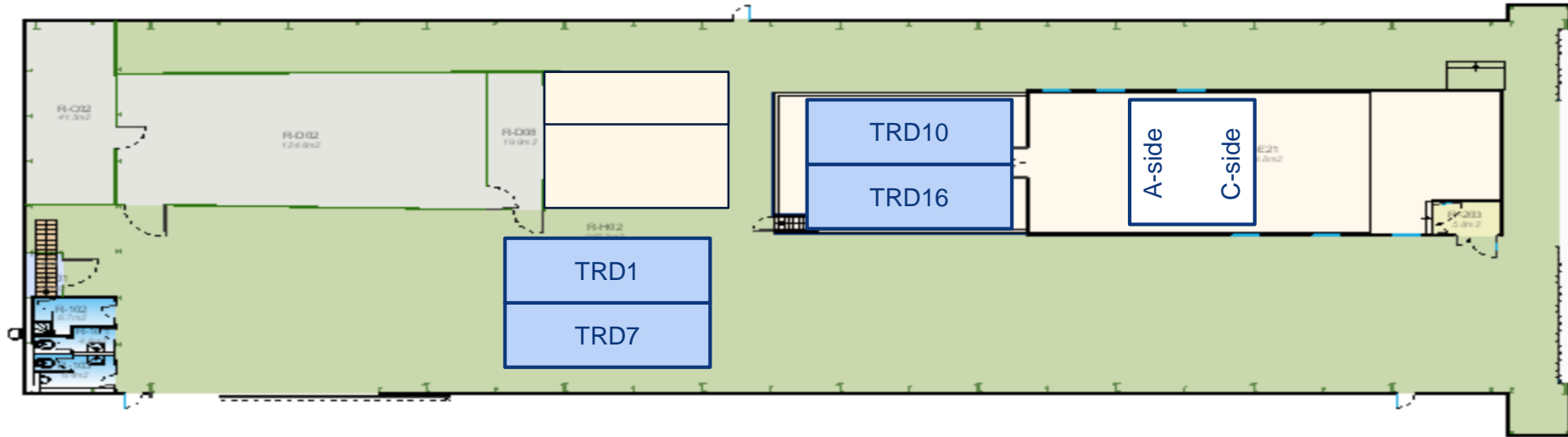
UX25 activities w39 – Thu 26 Sep 2019



UX25 activities w39 – Fri 27 Sep 2019

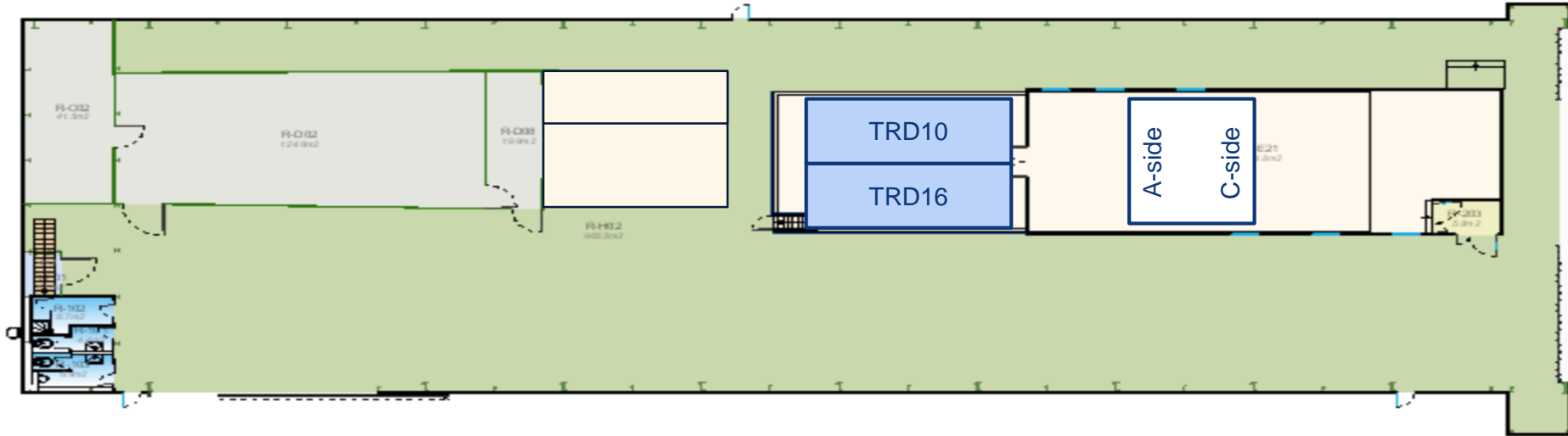


SXL2 activities w39 – Mon 23 Sep 2019

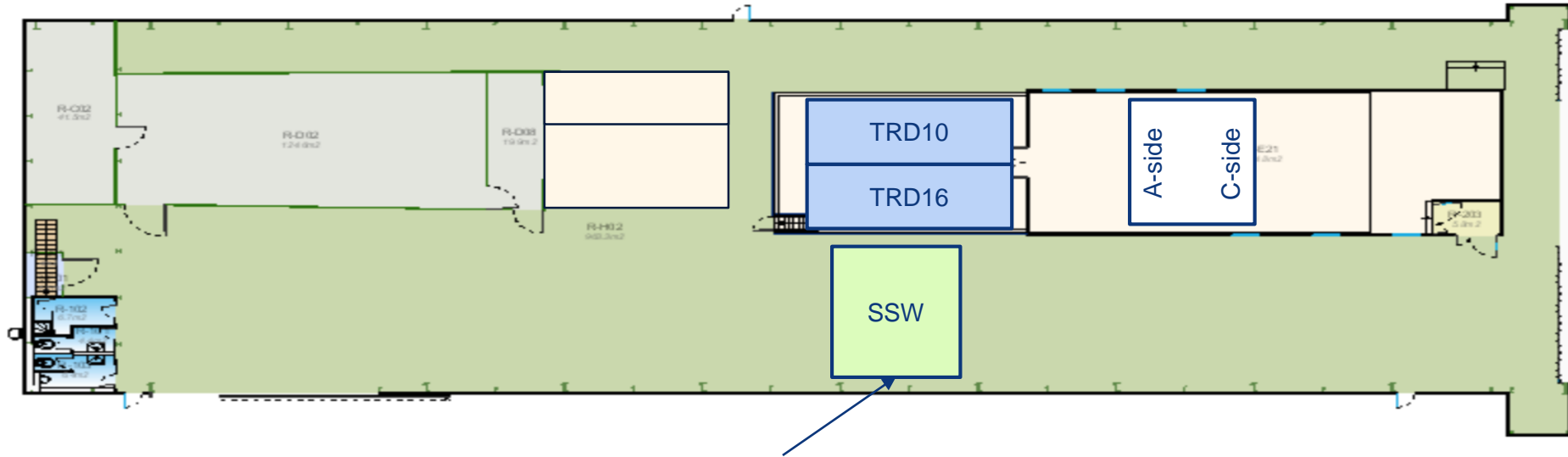


SXL2 activities w39 – Tue 24 Sep 2019

ALTEAD: transport TRD1 and 7 to SX2 and move TRD rotator in front of L3

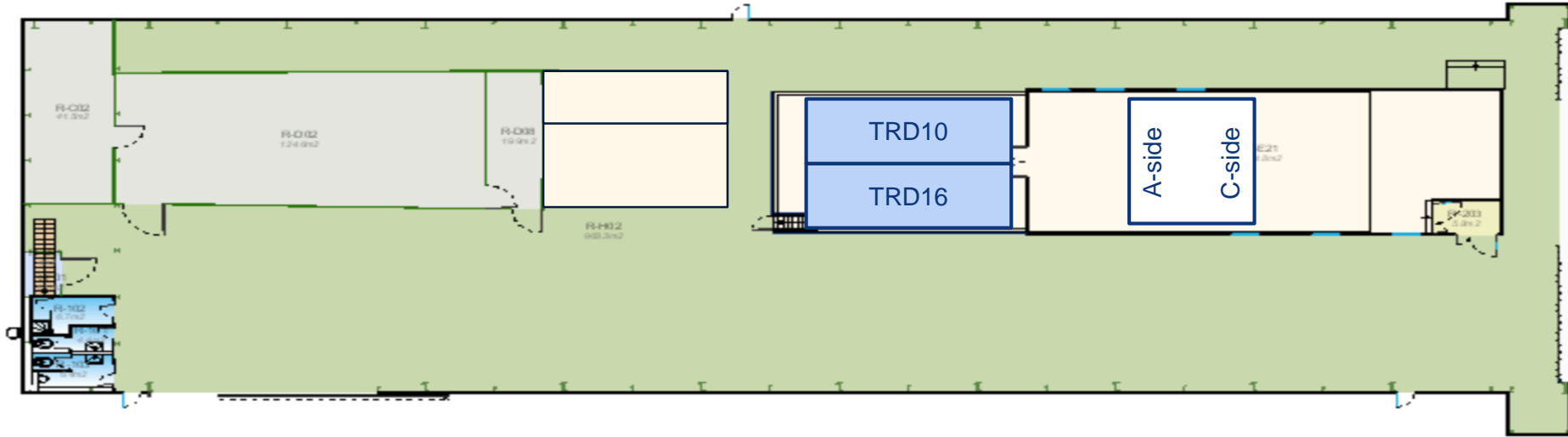


SXL2 activities w39 – Wed 25 Sep 2019



ALTEAD+TPC+P2tech: install C-side SSW onto lifting jig

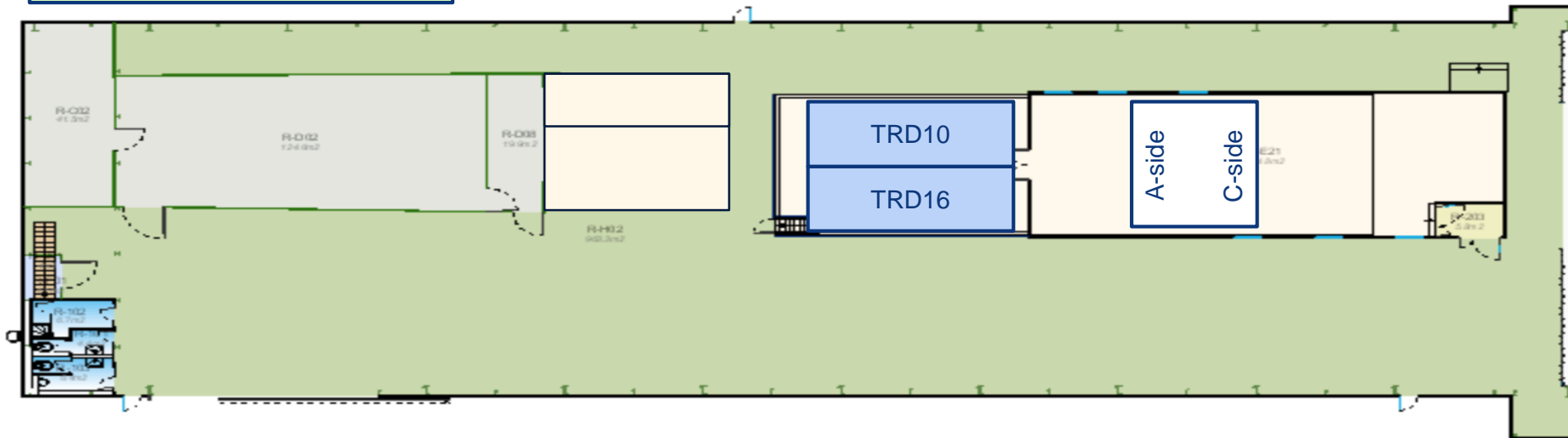
SXL2 activities w39 – Thu 26 Sep 2019



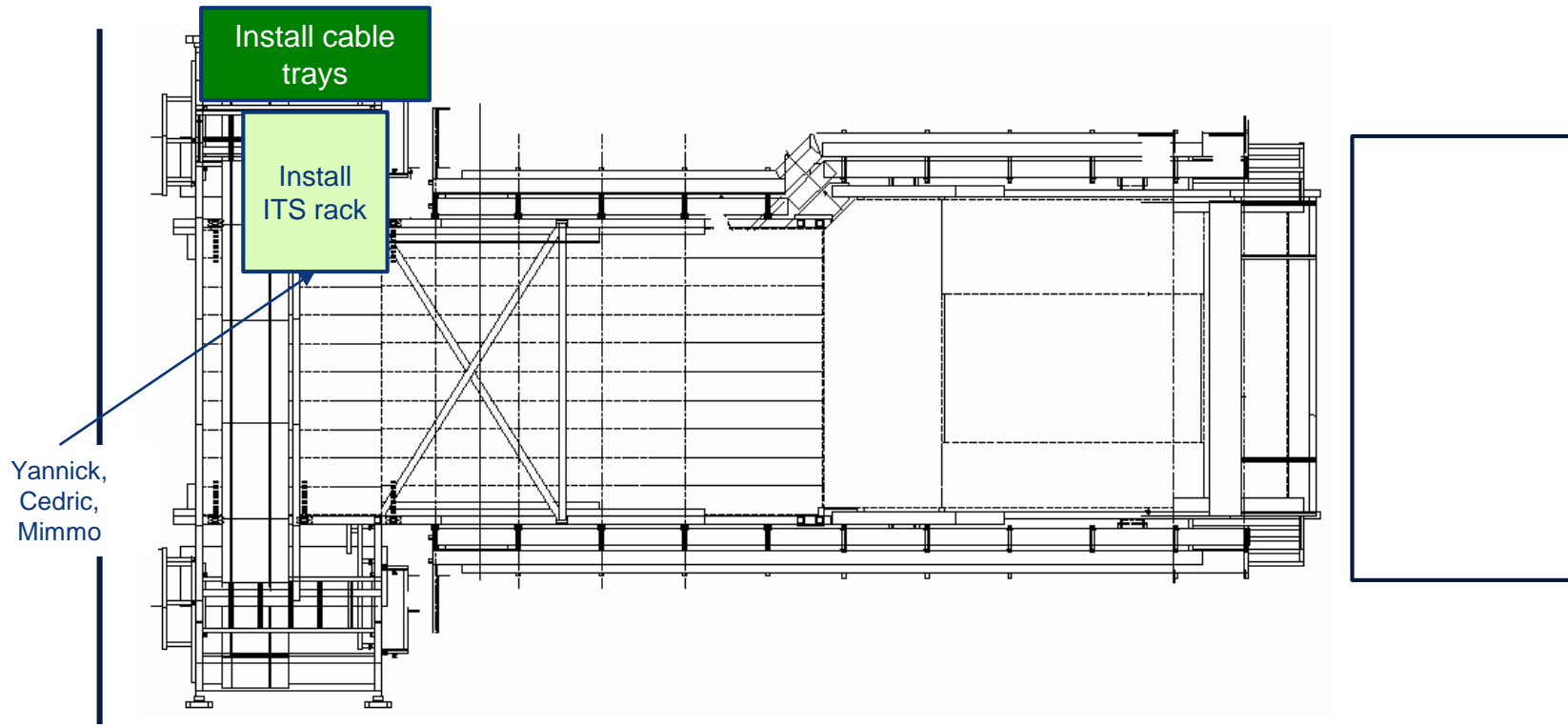
SXL2 activities w39 – Fri 27 Sep 2019

ALTEAD: assemble TPC lifting jig

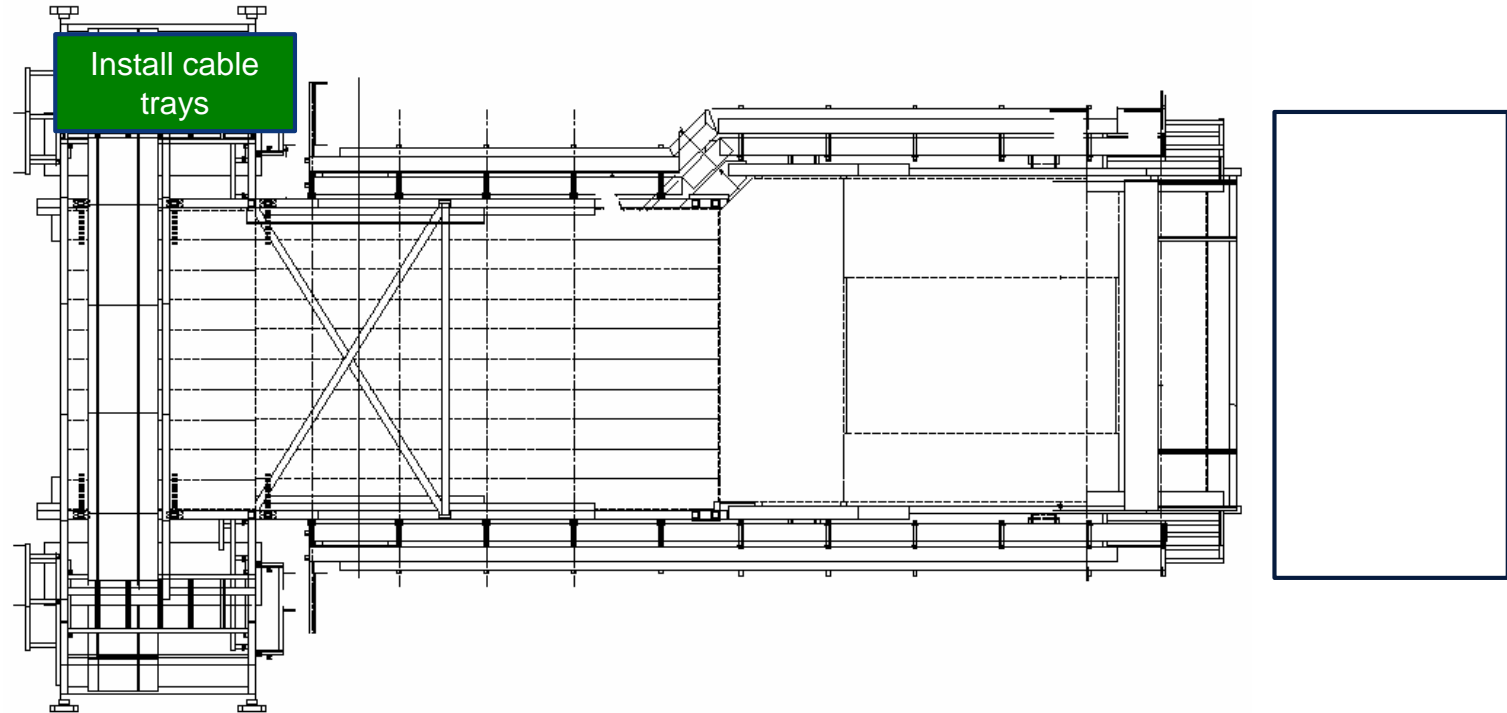
Unmount A-side scaffolding



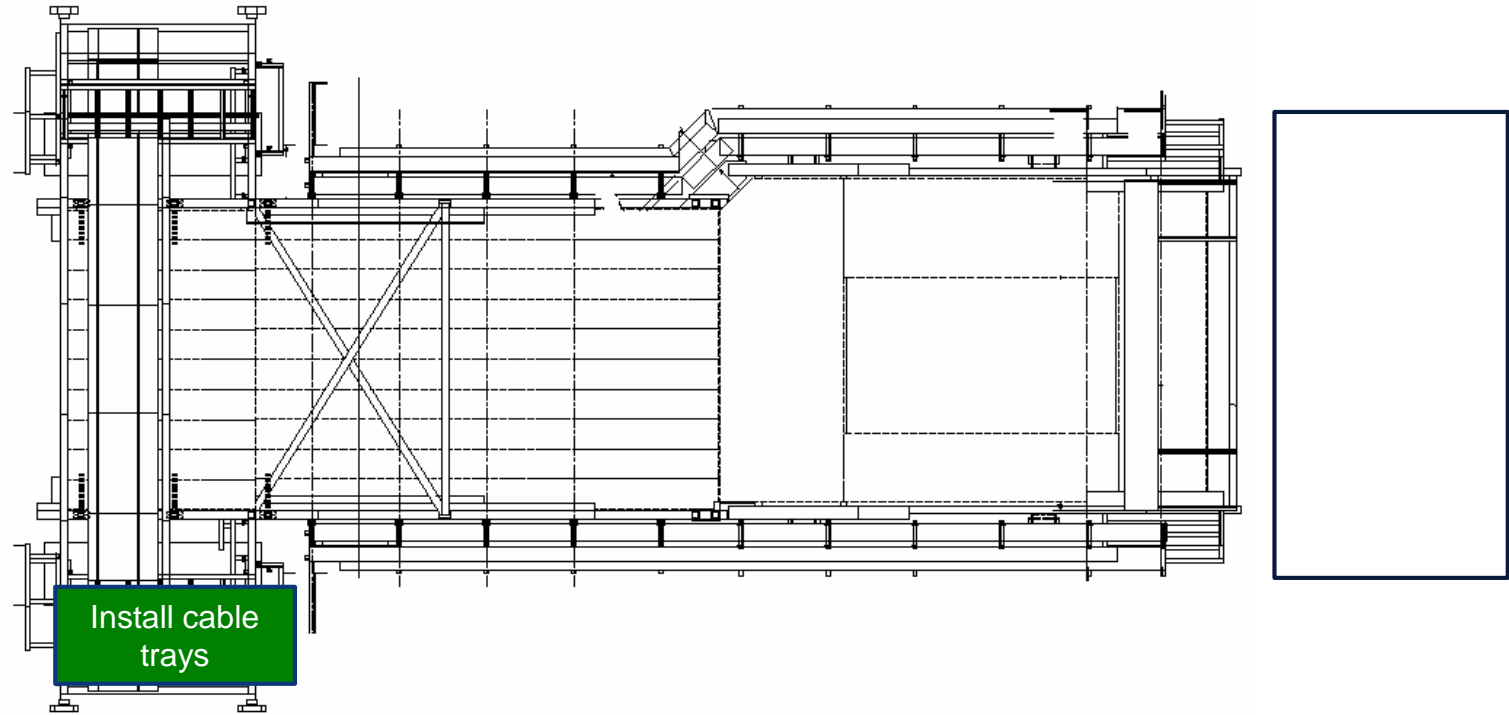
Miniframe activities w39 – Mon 23 Sep 2019



Miniframe activities w39 – Tue 24 Sep 2019

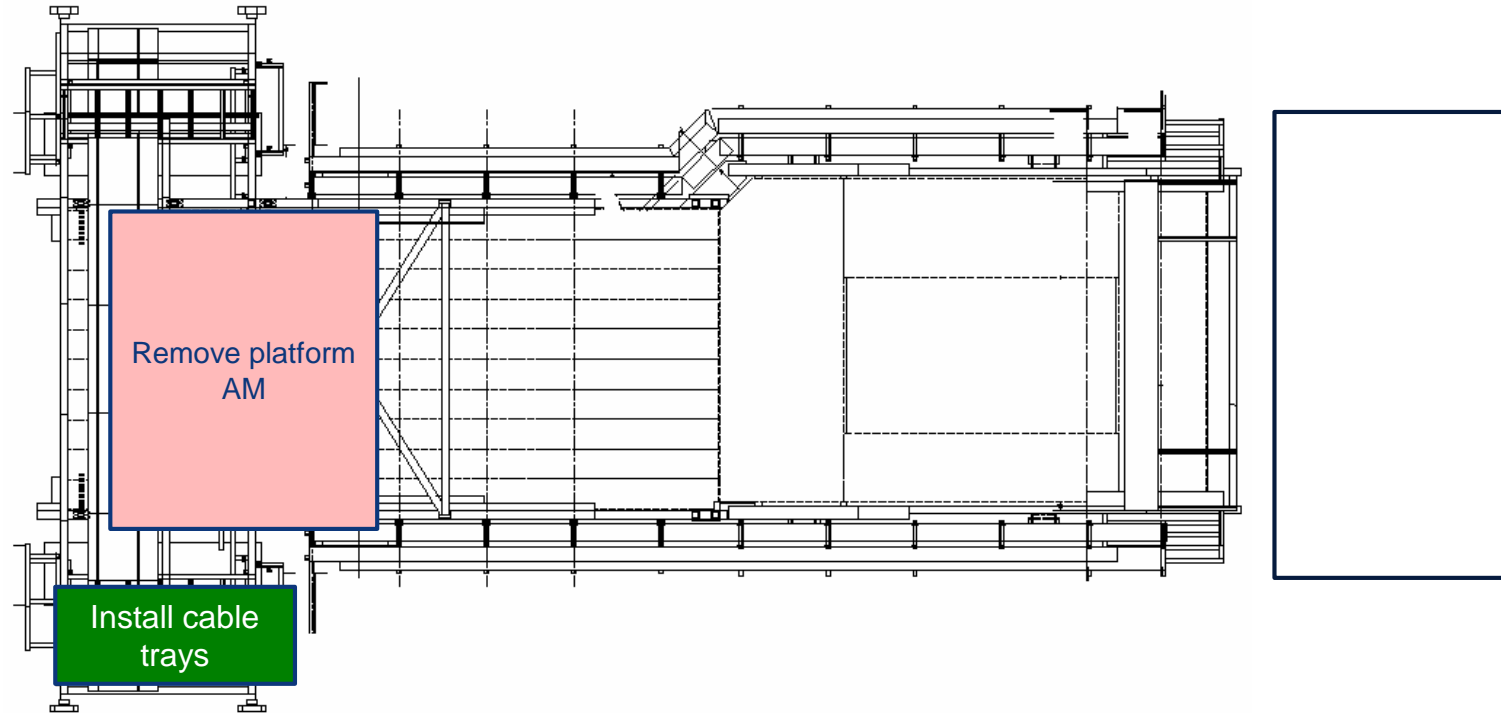


Miniframe activities w39 – Wed 25 Sep 2019

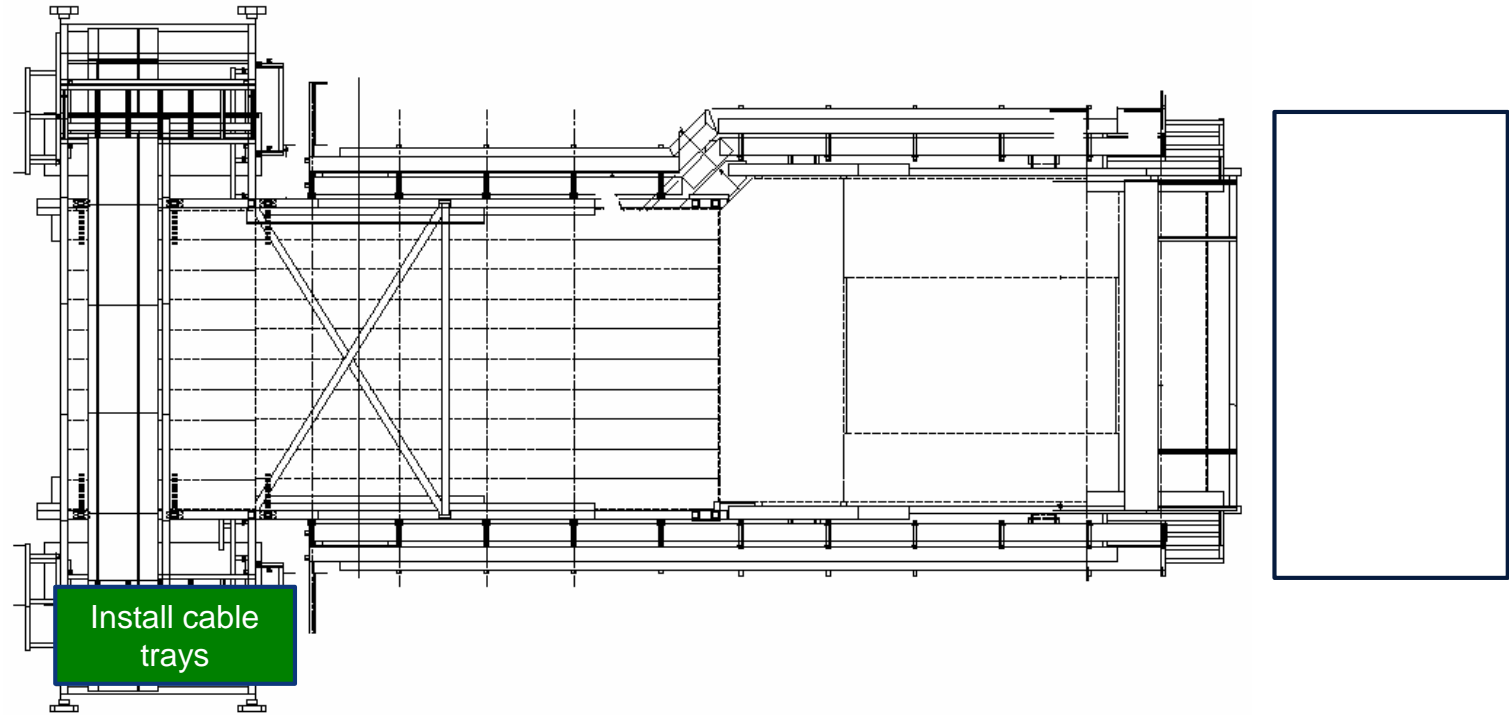


Miniframe activities w39 – Thu 26 Sep 2019

Miniframe review at 14:30 (TPC, ITS)



Miniframe activities w39 – Fri 27 Sep 2019



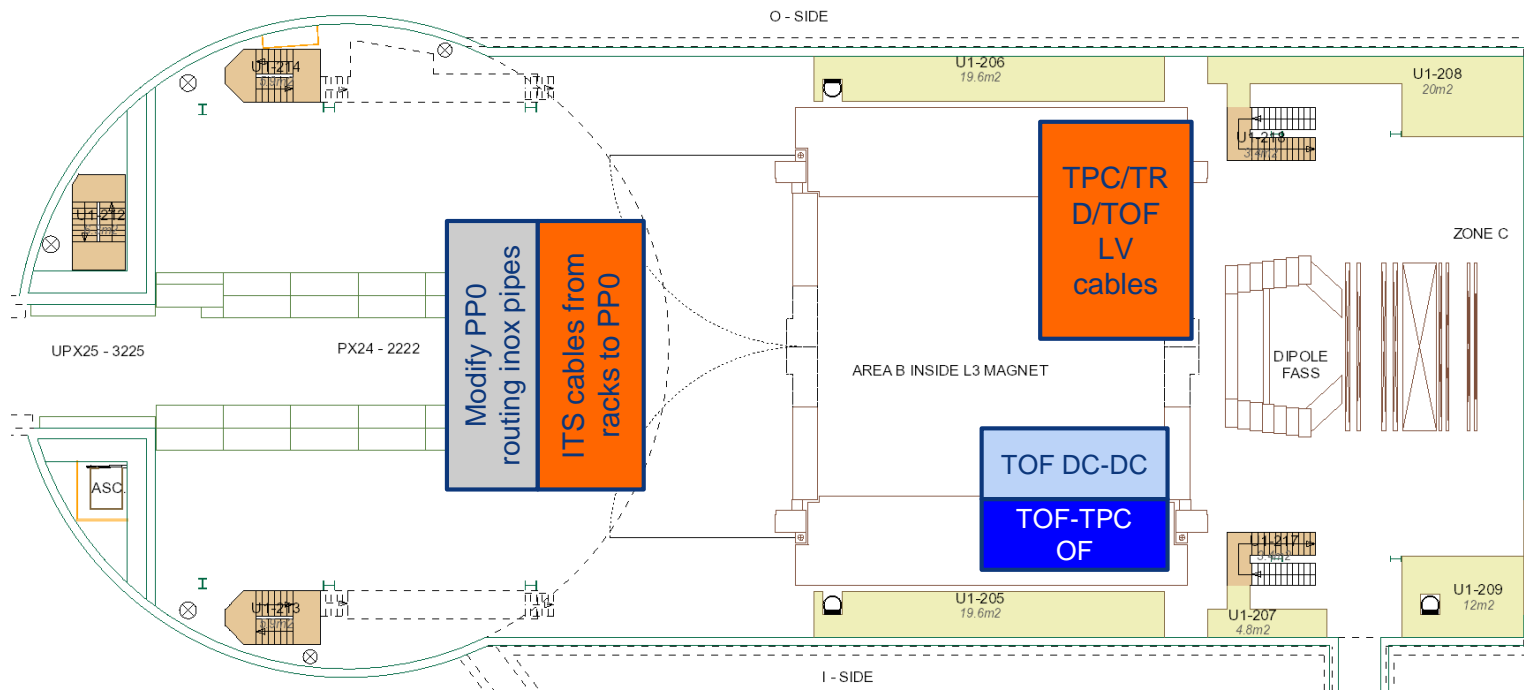
Day-by-day sequence w40



UX25 activities w40– Mon 30 Sep 2019

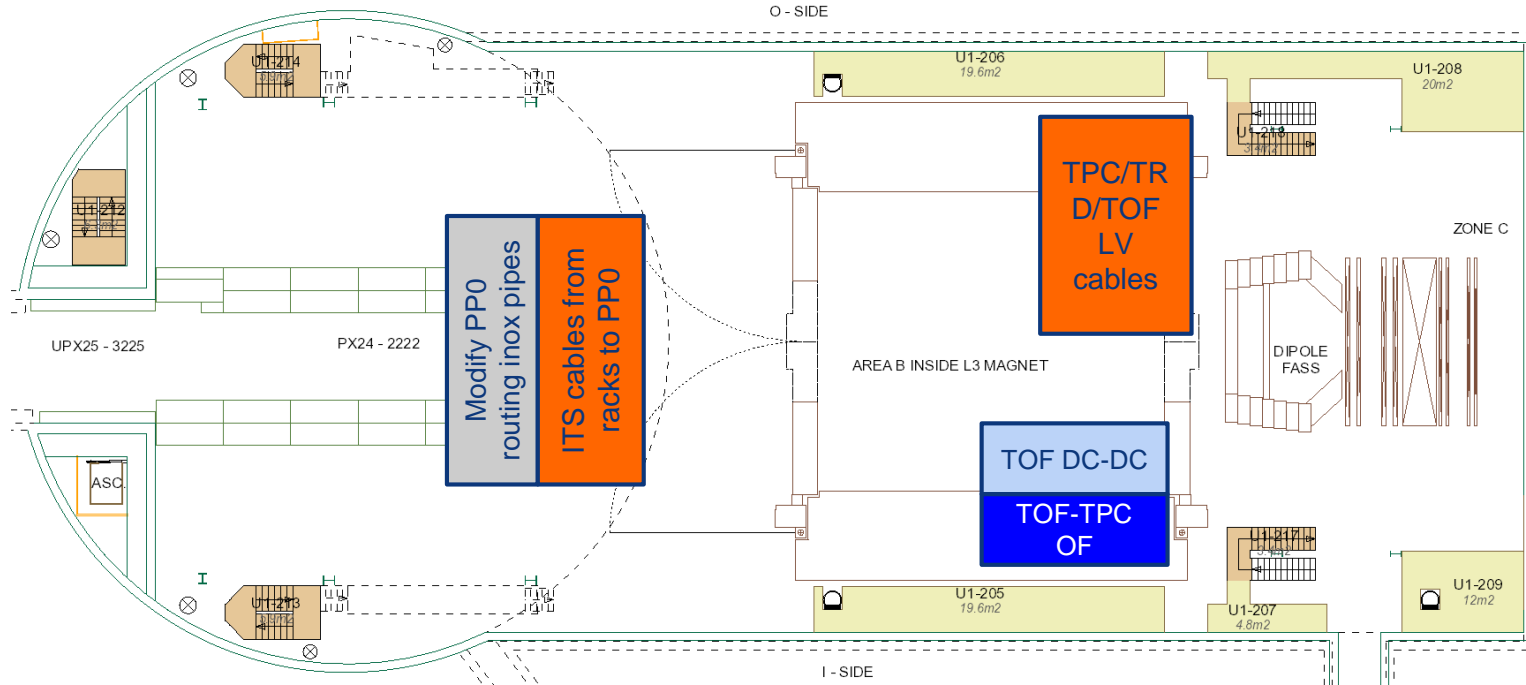
EN-CV: UW maintenance: 2 days STOP UX mixed water

CR0: install fire detection system (whole week)



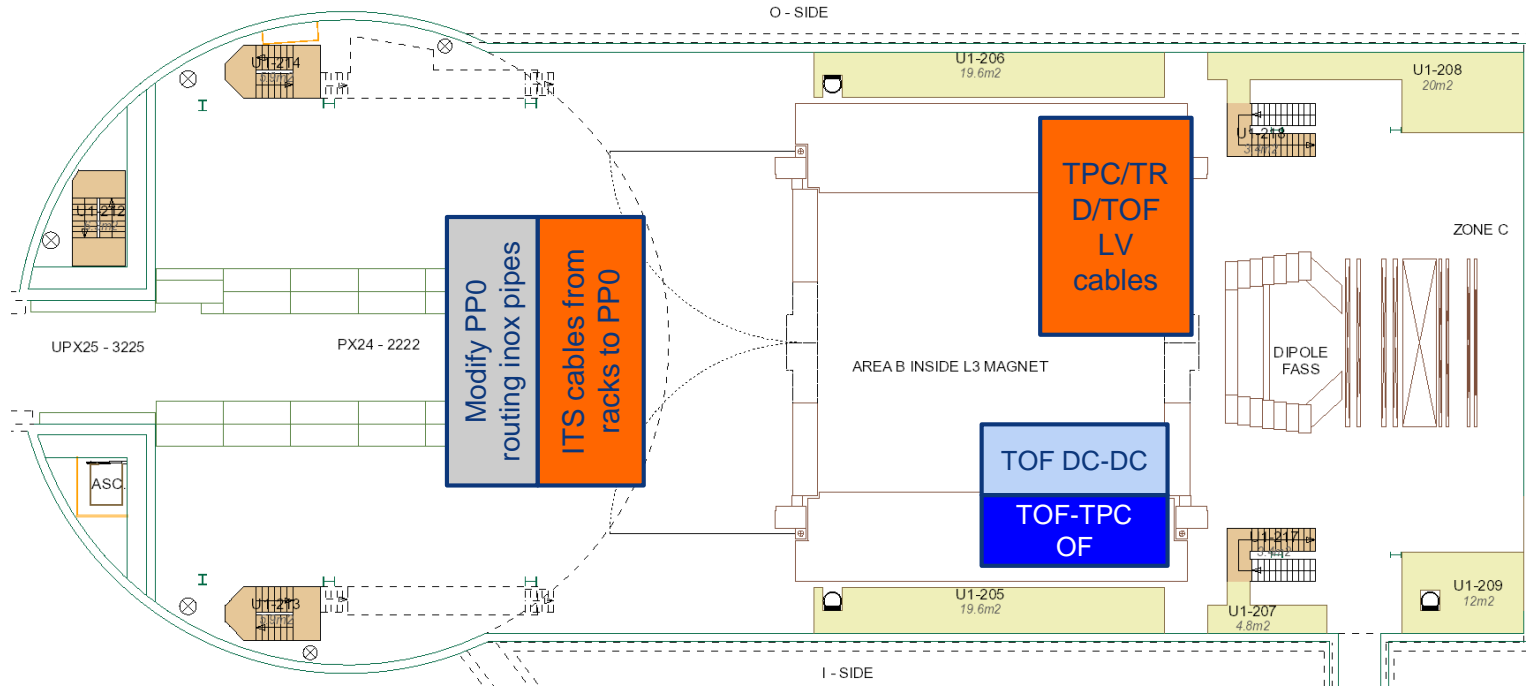
UX25 activities w40 – Tue 1 Oct 2019

Maintenance cavern lift (AS-724) from 6:00 to 8:00

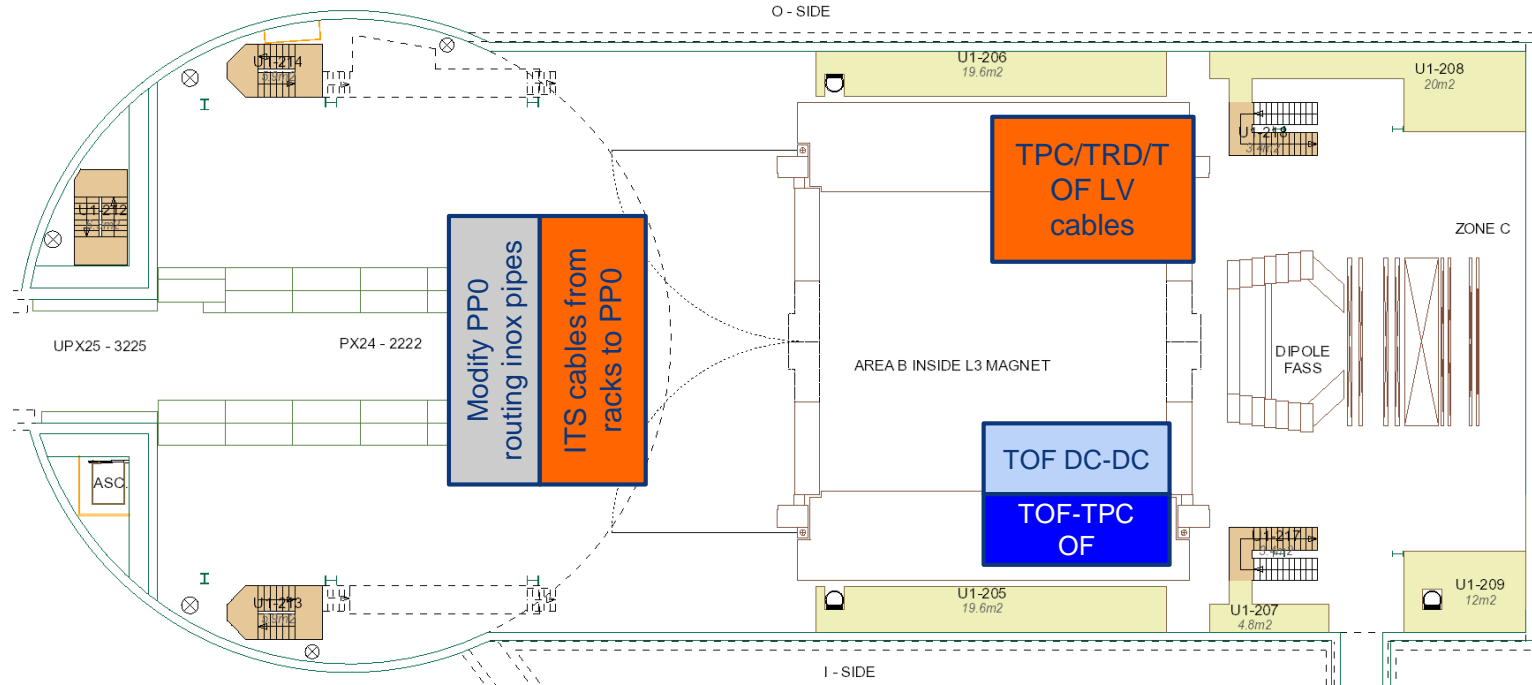


UX25 activities w40 – Wed 2 Oct 2019

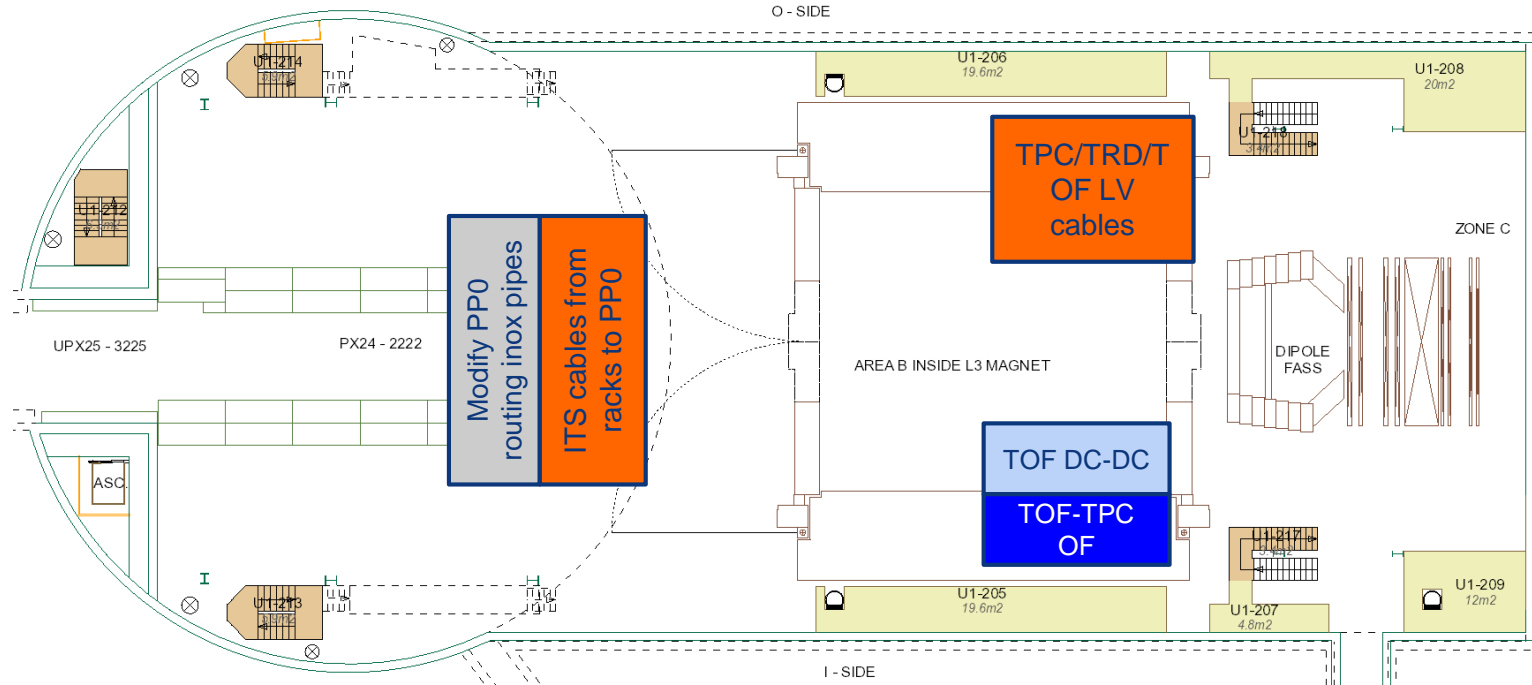
MCH: X-ray tests ST1 quadrants (Wed-Fri)



UX25 activities w40 – Thu 3 Oct 2019



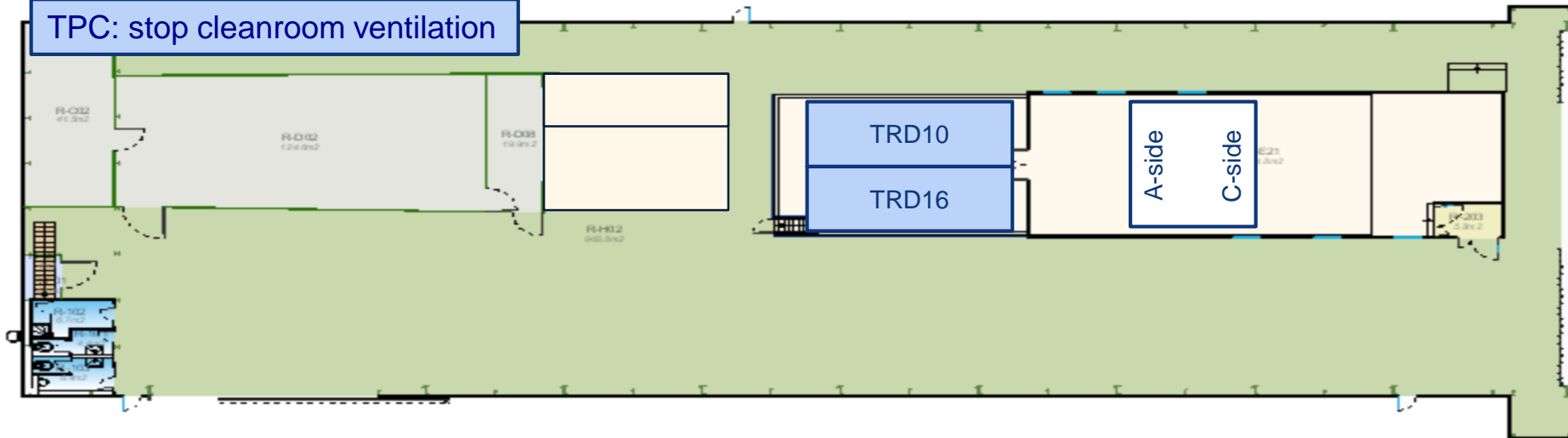
UX25 activities w40 – Fri 4 Oct 2019



SXL2 activities w40 – Mon 30 Sep 2019

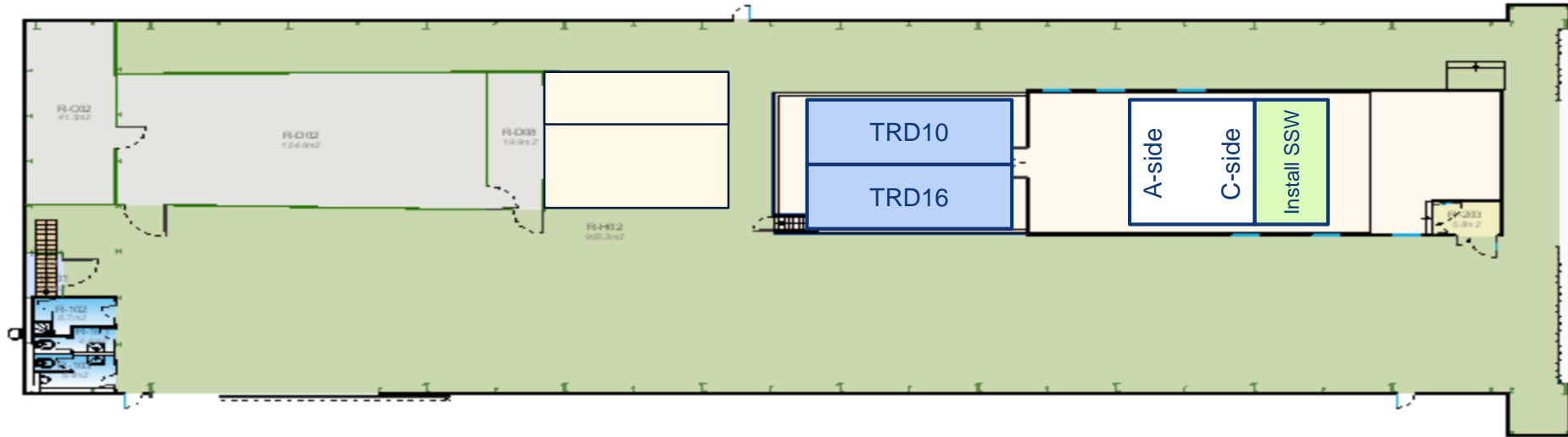
ALTEAD+P2tech: open cleanroom roof, remove Daldrop filter, manipulator, remove small scaffolding and MWPCs

TPC: stop cleanroom ventilation



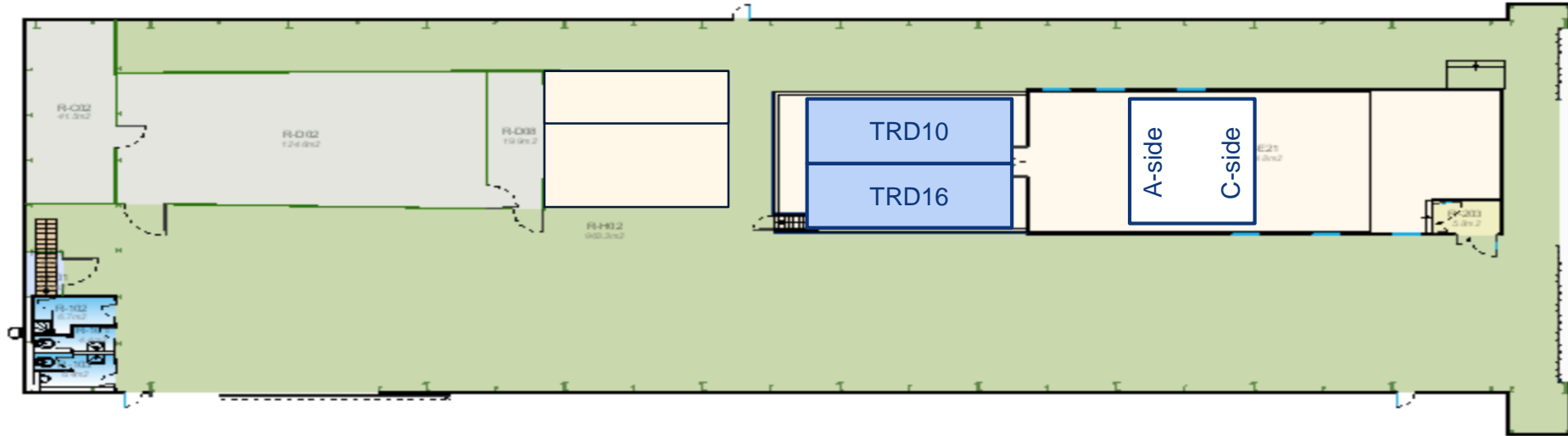
SXL2 activities w40 – Tue 1 Oct 2019

ALTEAD+P2tech: move TPC by 10-12cm towards Saleve, modify YP, install SSW C-side



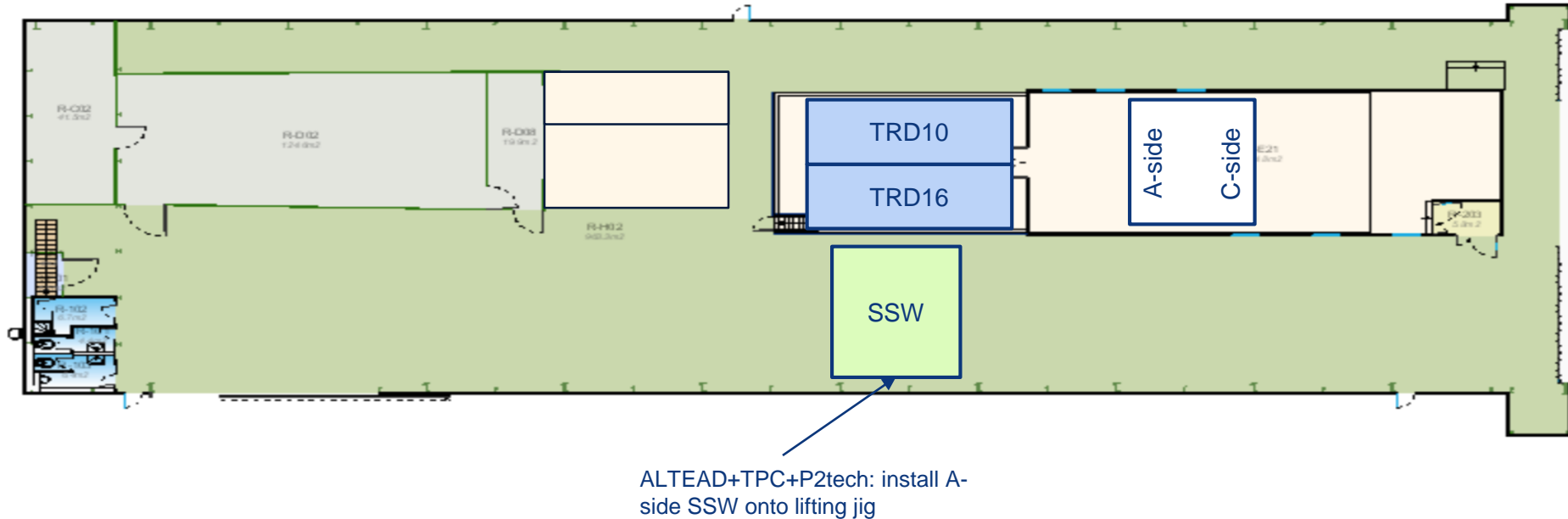
SXL2 activities w40 – Wed 2 Oct 2019

ALTEAD+P2tech: install I-bars C-side, survey, end-plate adjustment, install grounding bars (A-side) with nacelle, install 2 racks (A and C sides)



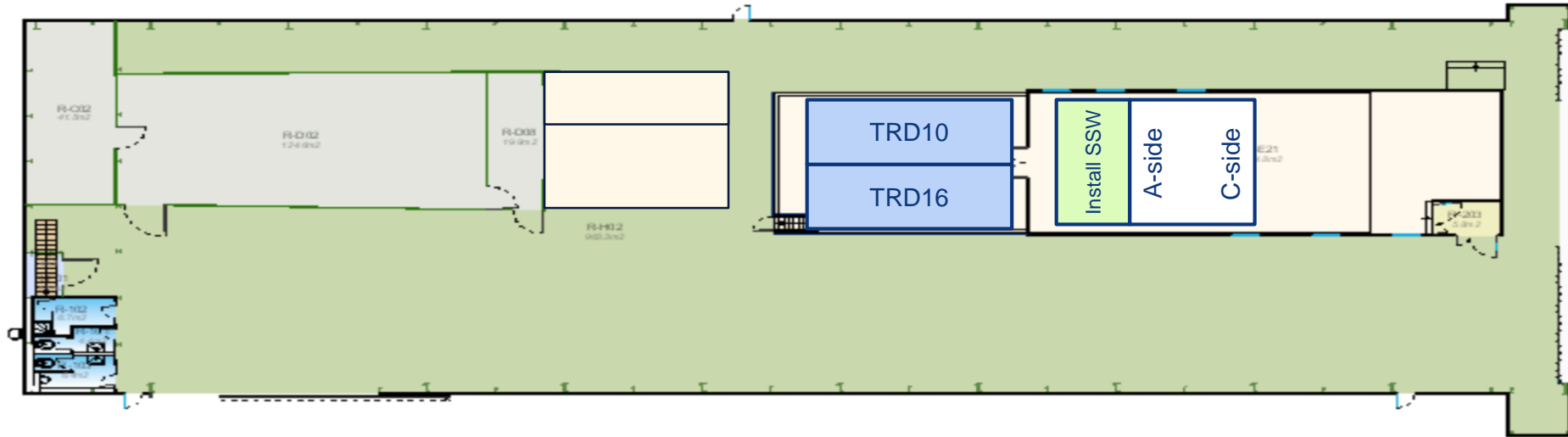
SXL2 activities w40 – Thu 3 Oct 2019

ALTEAD+P2tech: install C-side YP extension, remove A-side I-bars, open cleanroom back-wall

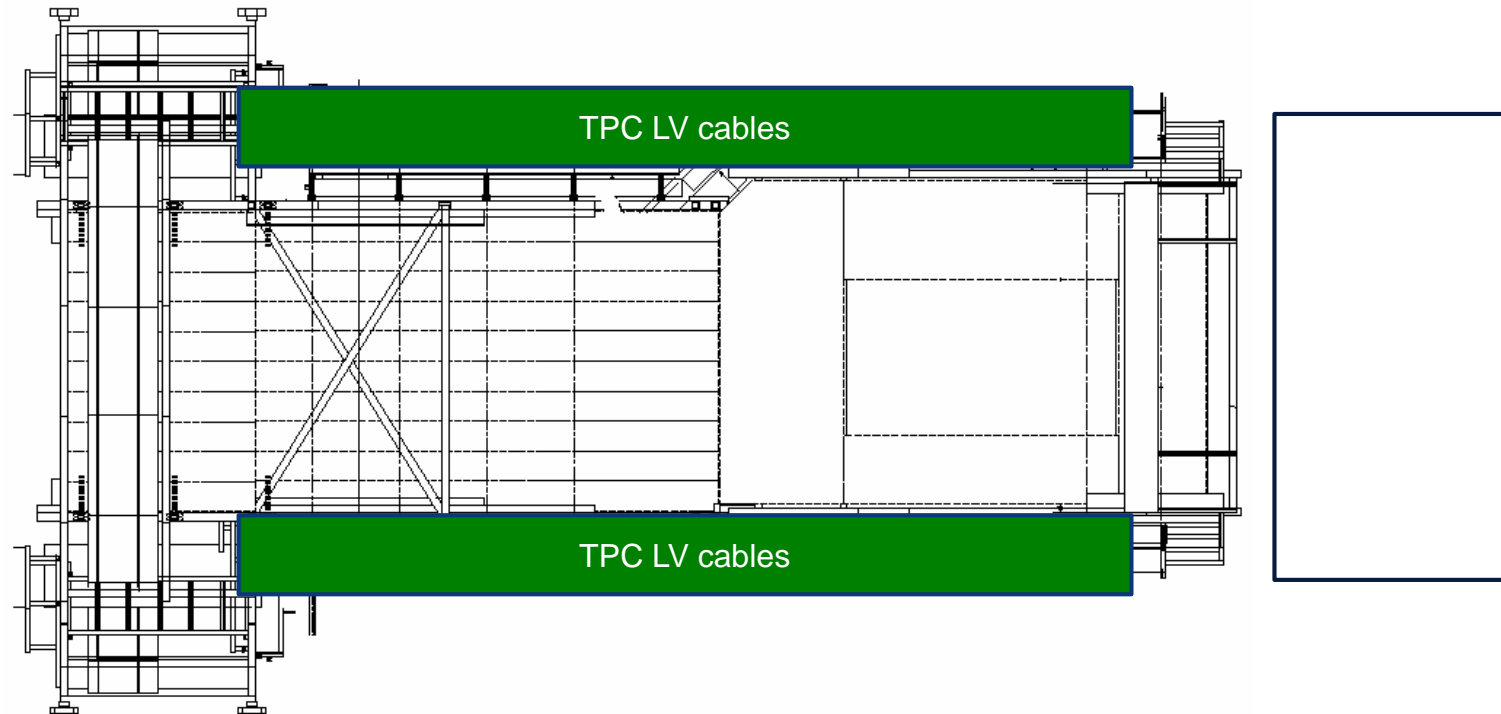


SXL2 activities w40 – Fri 4 Oct 2019

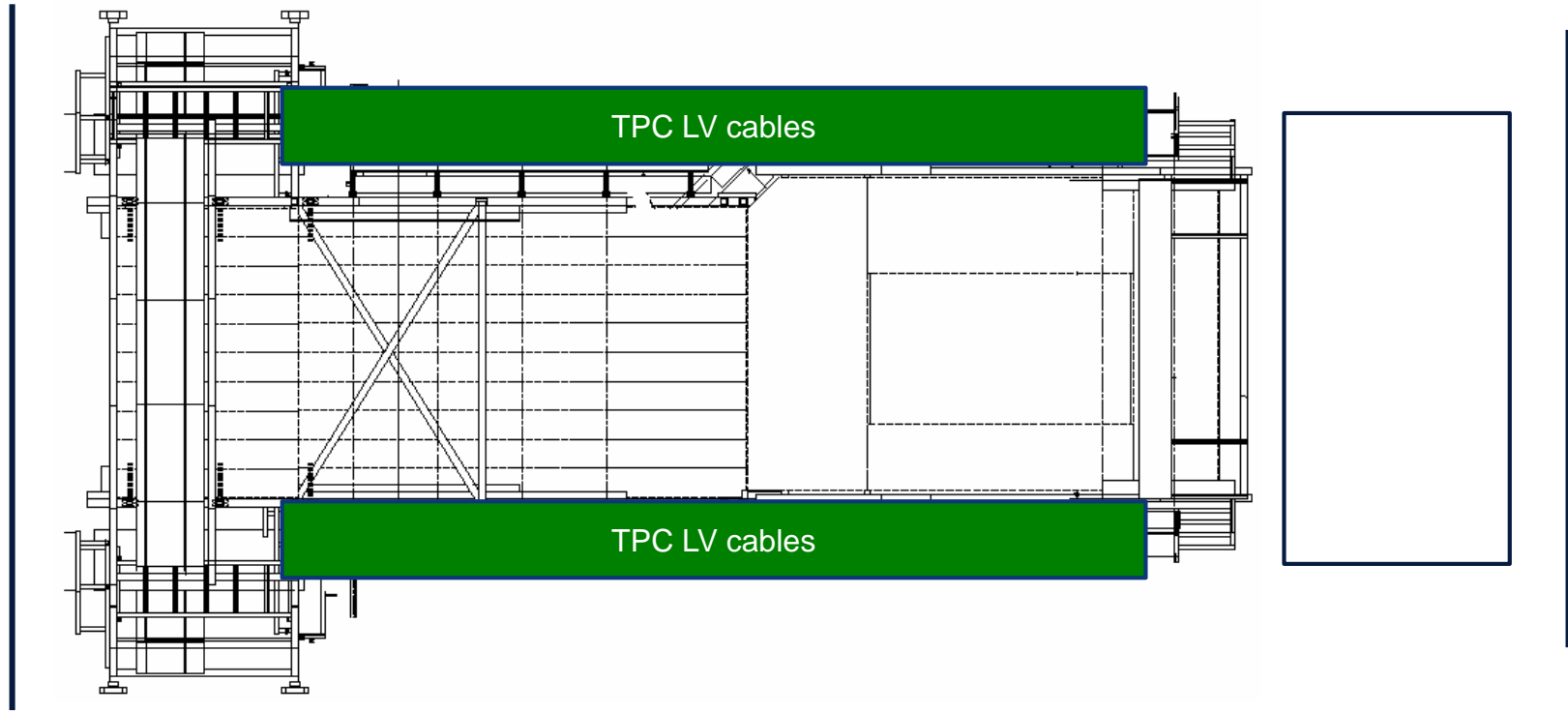
ALTEAD+P2tech: install A-side SSW and scaffolding (mount on Monday) and close roof



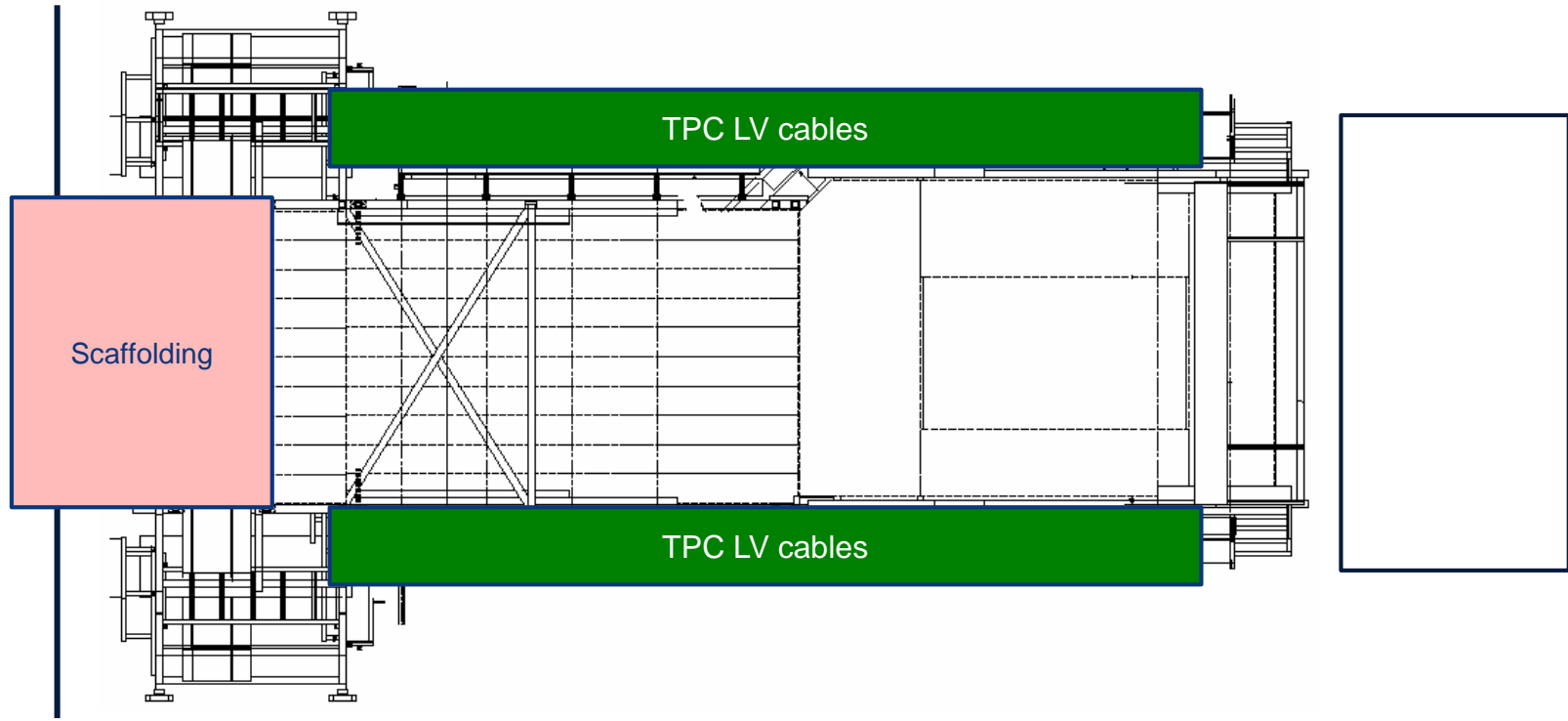
Miniframe activities w40 – Mon 30 Sep 2019



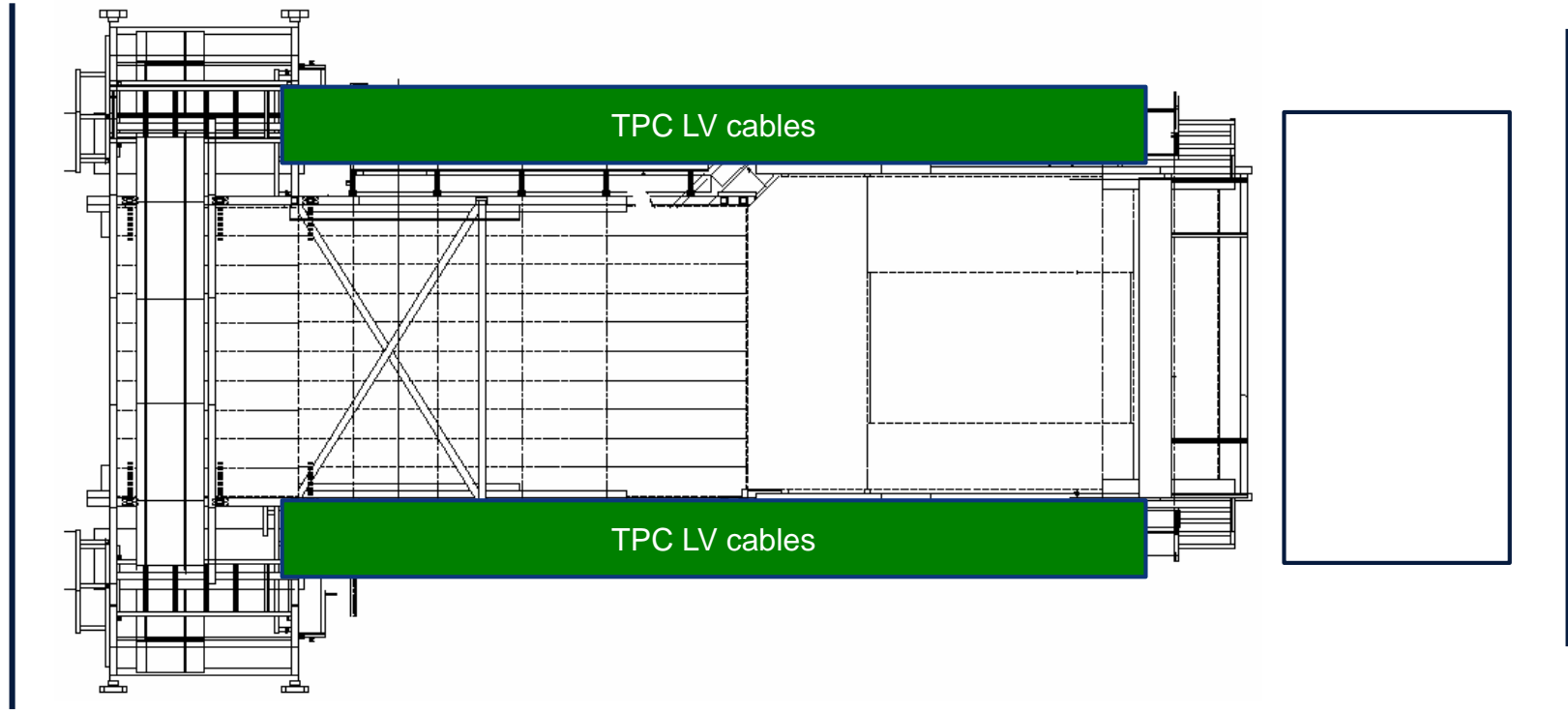
Miniframe activities w40 – Tue 1 Oct 2019



Miniframe activities w40 – Wed 2 Oct 2019



Miniframe activities w40 – Thu 3 Oct 2019



Miniframe activities w40 – Fri 4 Oct 2019

