

LS2 planning meeting

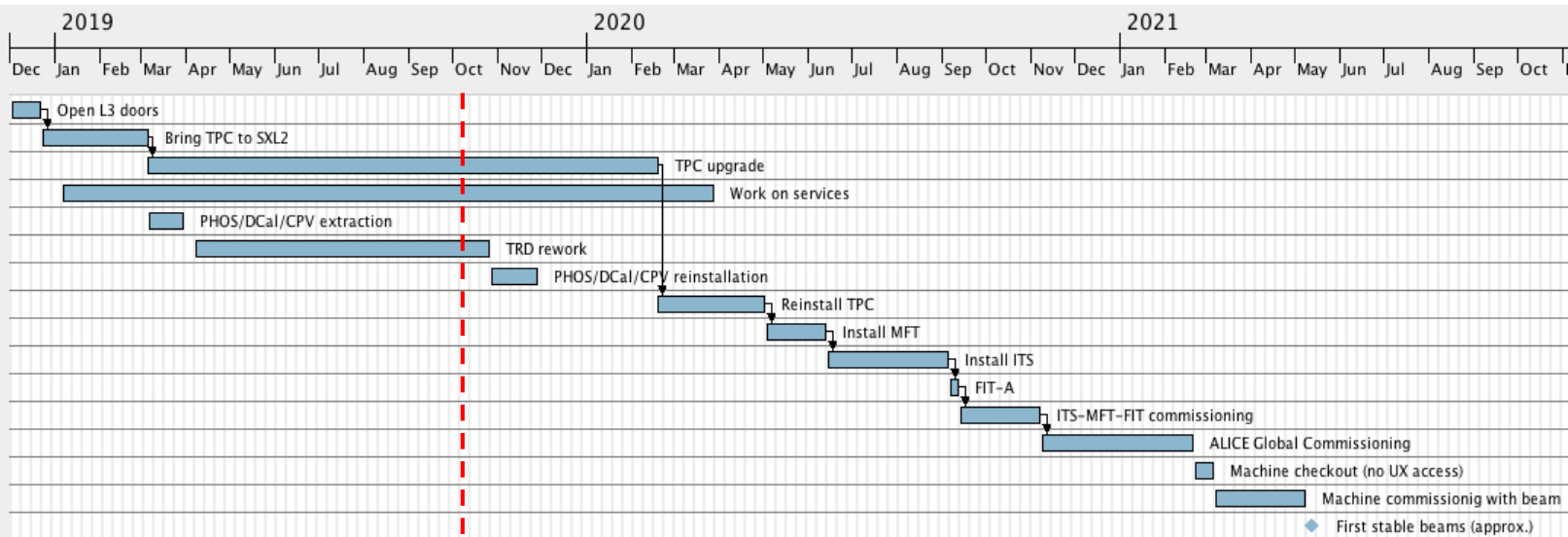
A.Tauro



LS2 master plan (v31)



Begin date	End date	Dur...
3/12/18	21/12/18	15
24/12/18	5/3/19	52
6/3/19	18/2/20	250
7/1/19	27/3/20	320
7/3/19	29/3/19	17
8/4/19	25/10/19	145
28/10/19	27/11/19	23
19/2/20	1/5/20	53
4/5/20	12/6/20	30
15/6/20	4/9/20	60
7/9/20	11/9/20	5
14/9/20	6/11/20	40
9/11/20	19/2/21	75
22/2/21	5/3/21	10
8/3/21	7/5/21	45
10/5/21	10/5/21	0



EN-EL interventions

- Test secours (10 min): 19 Dec 2019 from 8:00 AM to 11:00 AM
- 18kV, 3.3kV and LV network maintenance:
 - Mon 20 to Wed 22 Jan 2020: 3 days no general services - **no access on site (both surface and underground)**
 - Thu 23 to Fri 24 Jan 2020: 2 days "Limited access" → details to be worked out
- AUG on Monday 27 January 2020 - **no access on site (both surface and underground)**
- Auto transfer test: 27-29 Apr 2020
- BIW test: 5 and 6 Oct 2020 from 18:00 to 00:00 – **no access underground**

Racks status

- Racks currently powered on:
 - HMPID racks
 - TOF (I-side) racks
 - Rack C24 and C25 (CTP) (and VME crates on)

EN-CV interventions

- **Big maintenance:**

- SF: from Nov 2019 to mid Jan 2020. NO impact on ALICE as both magnets will be OFF.
- **UW: stop UX mixed water for 2 days in week 41/2019 (October) – Tue 8 and Wed 9 Oct**
- SU: various small perturbations + 1 day **stop all cooling UX** + 1 day **stop all cooling SXL2** in week 16/2020 (April).

- **Small maintenance:**

- UW: from mid Aug 2020 to mid Sep 2020. **Stop mixed water UX** for 1 day in week 37/2020 (September).
- SF+SU: weeks 45-47/2020: cleaning towers (stop SF 1 week) + 1 day **stop all cooling UX**.

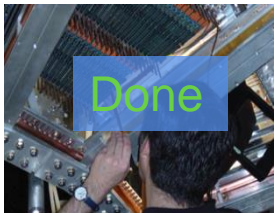
- **Ventilation:**

- SG2: w7/2019 - Done
- Gas extraction: w8/2019 - Done
- UX25 cavern: May 2020 (tbc)
- MCH and MTG: Apr 2020 (tbc)
- L3: Apr 2020 (tbc)
- ITS: Apr 2020 (tbc)

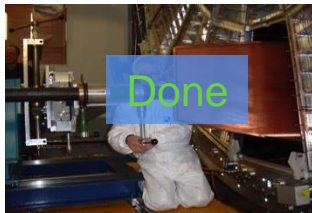
- **Raw water:**

- Test after Apr 2019. Short interruption (1 day), can be used tap water during the test.

TPC upgrade sequence



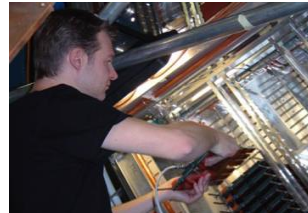
Remove Services and FEE
(outside cleanroom)



Uninstall MWPC ROC



Install GEM ROC



Install new FEC + test



Transportation to SX2



TPC in cleanroom.
Cleaning & irradiation tests

7 Mar

11 Apr



FC HV infrastructure
modification

25 Apr (A)
5 Aug (C)

13 May (A)
16 Aug (C)



Survey, sealing,
overpressure test

14 Jun (A)
25 Aug (C)

5 Jul (A)
16 Sep (C)



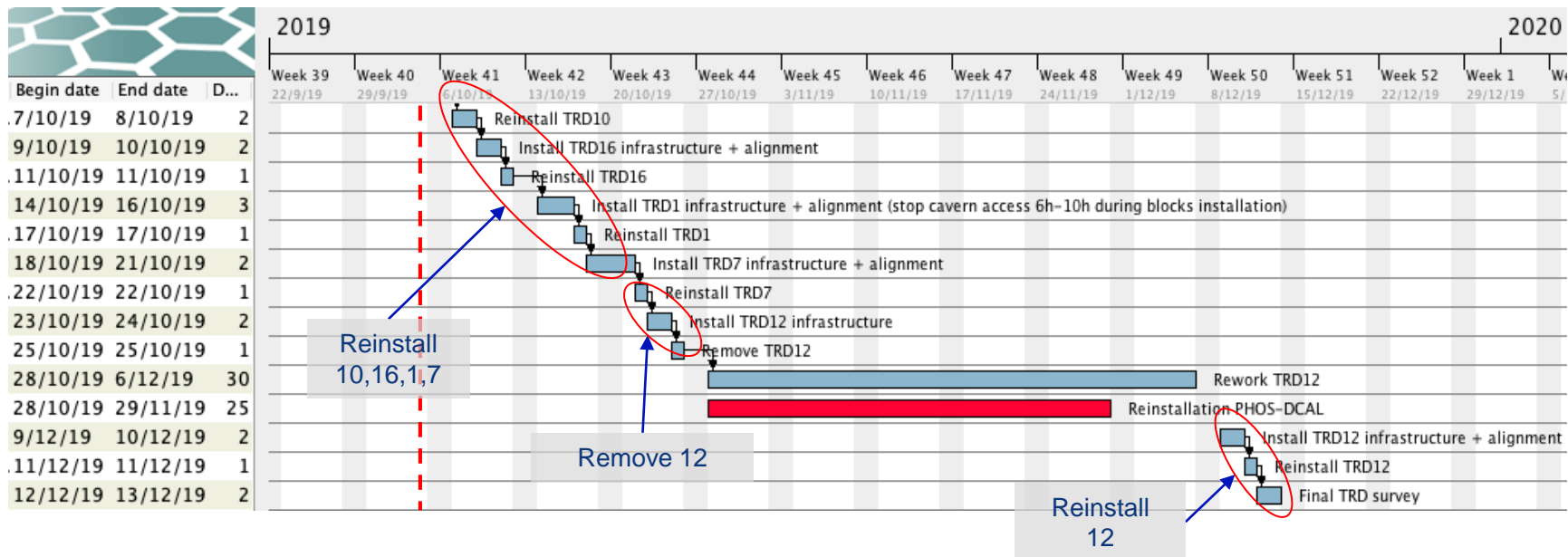
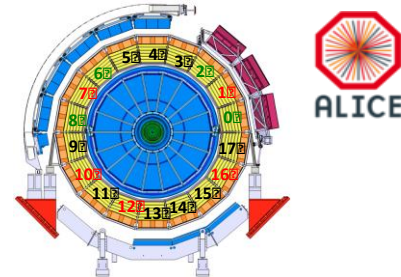
Pre-commissioning with
cosmic, Laser, pulser, Xray

14 Oct (A)
31 Oct (C)

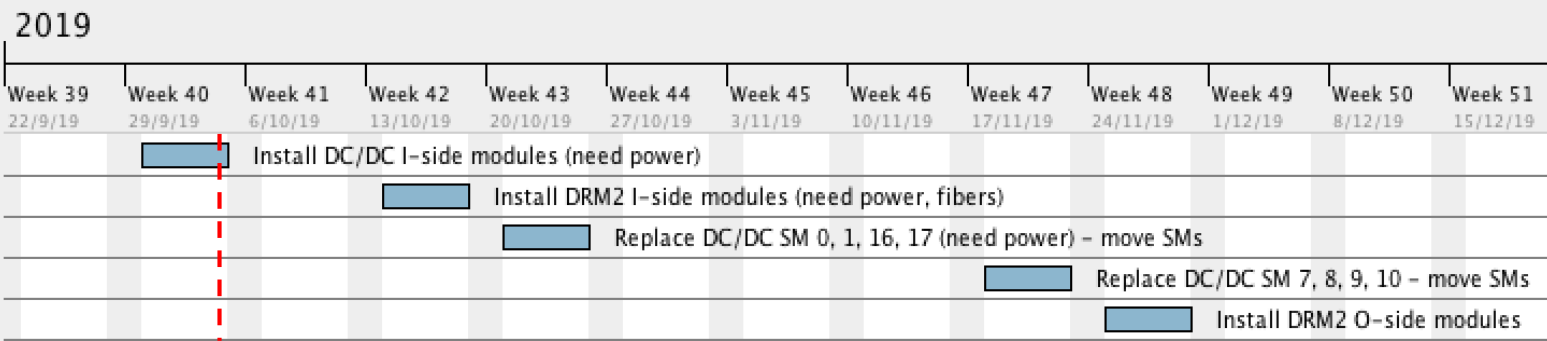
31 Oct (A)
4 Dec (C)

18 Feb 2020

TRD schedule

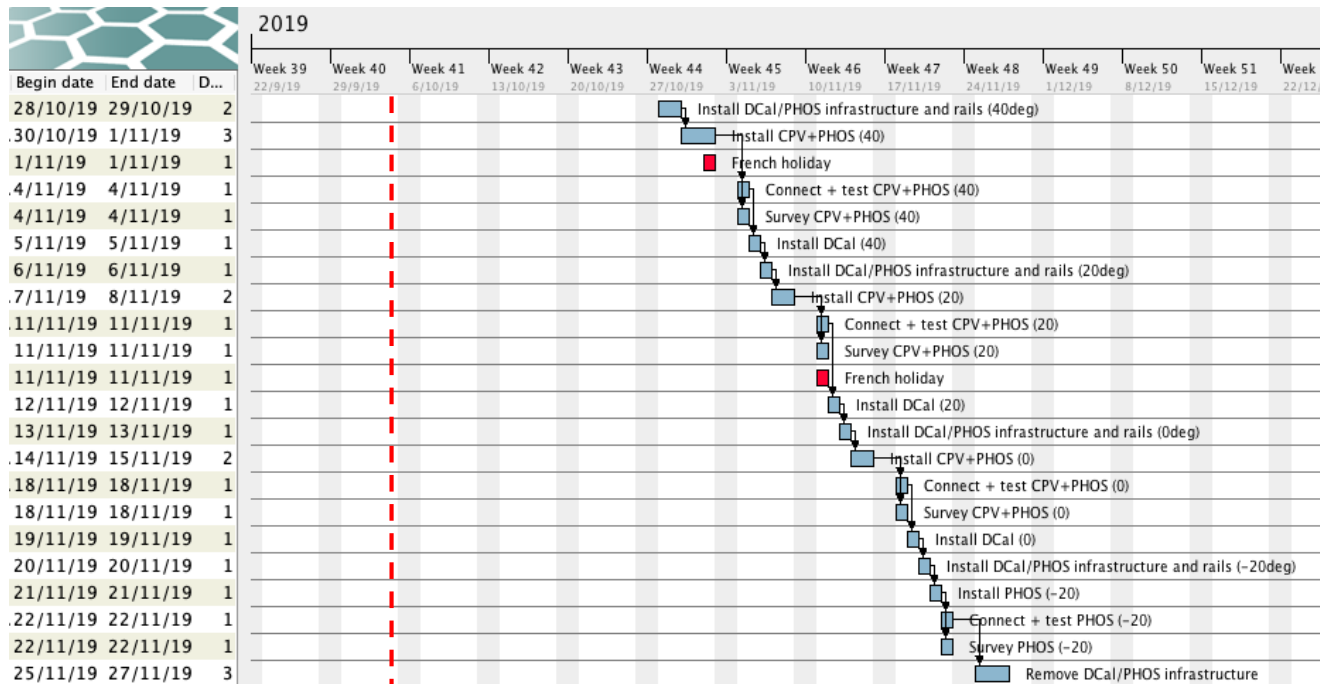


TOF schedule



Begin date	End date	D...
30/9/19	4/10/19	5
14/10/19	18/10/19	5
21/10/19	25/10/19	5
18/11/19	22/11/19	5
25/11/19	29/11/19	5

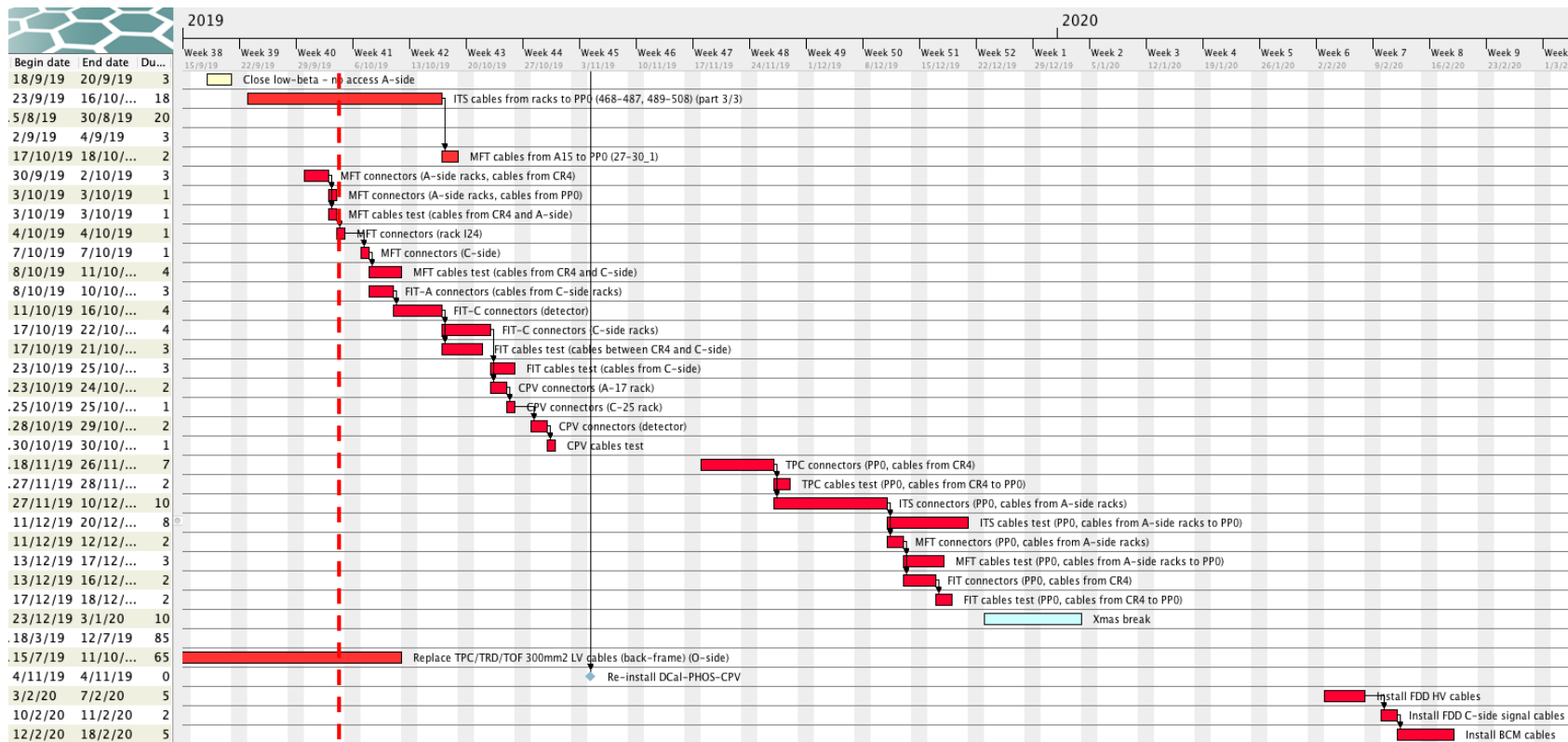
DCal/PHOS/CPV schedule



- Jean-Se will come in w44, w45 and w48 (w48 if needed)
- Jean-Francois will come with one technician (Marc Marton) in w45, w46 and w47

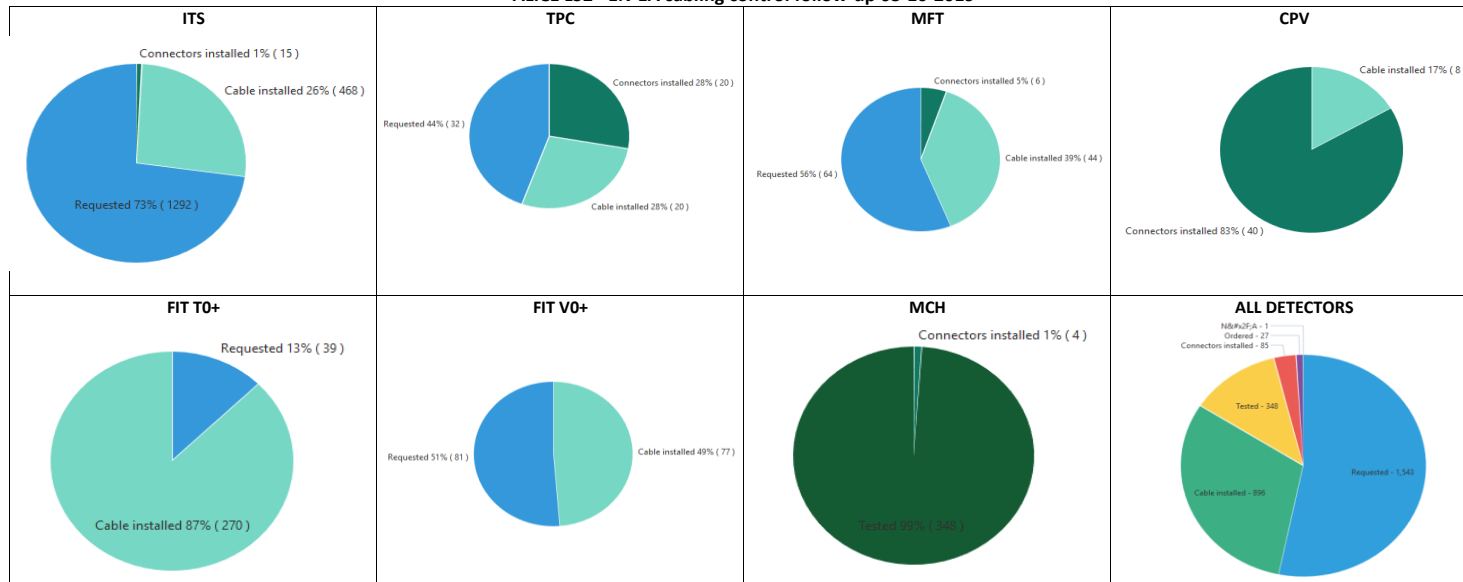
Copper cables (EN-EA)

>>> 2nd LS2 cabling campaign in Feb-Mar 2020 → deadline for requests: Oct 31st <<<



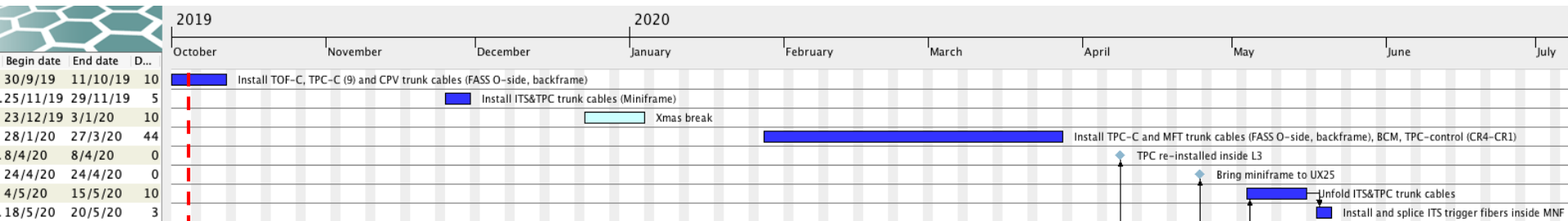
Copper cables (EN-EA)

ALICE LS2 - EN-EA cabling control follow-up 03-10-2019

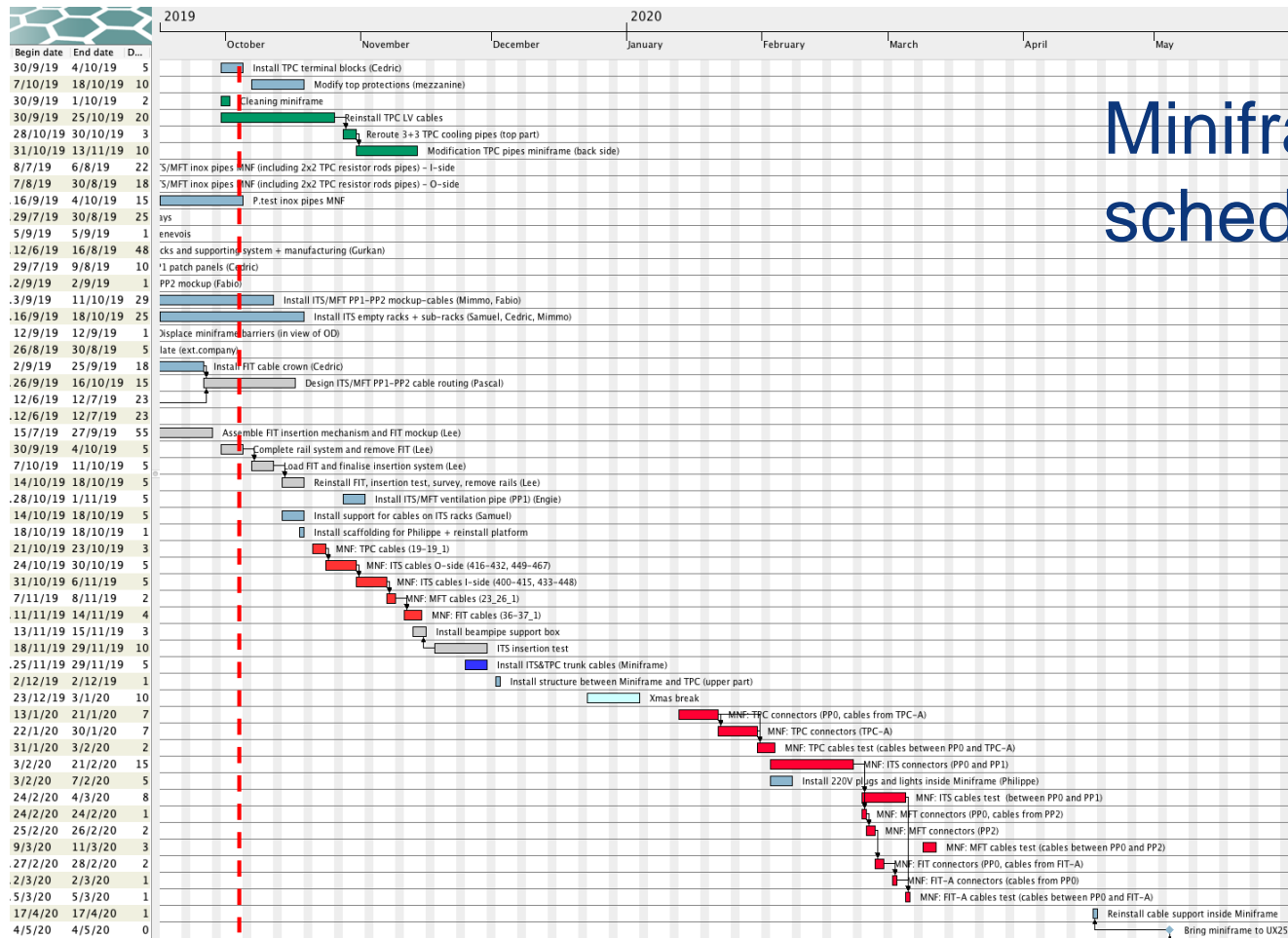


46% done

Optical fibers (EN-EL)



Miniframe schedule



Day-by-day sequence w40

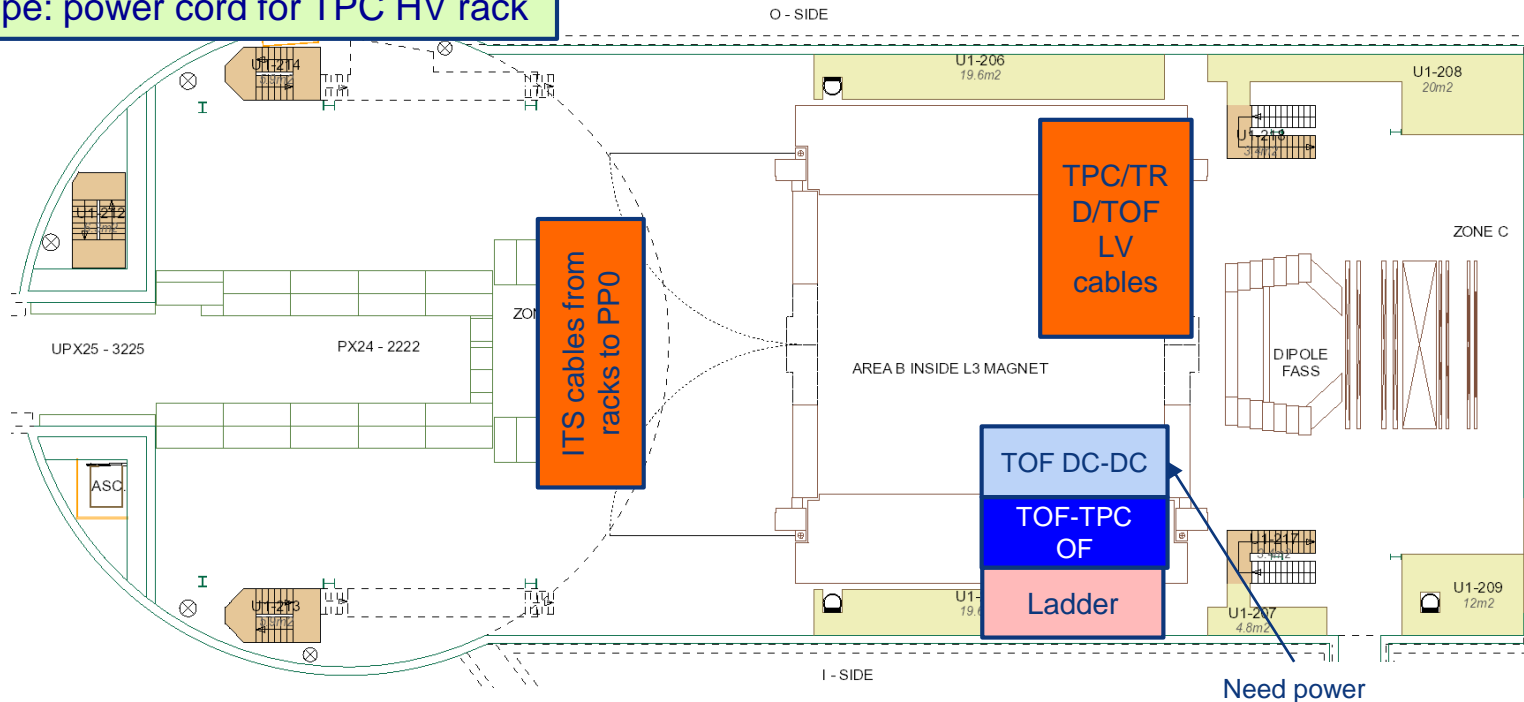


UX25 activities w40– Mon 30 Sep 2019

CR0: install fire detection system (whole week)

Philippe: install fixations for MCH optical fiber boxes (Giuseppe)

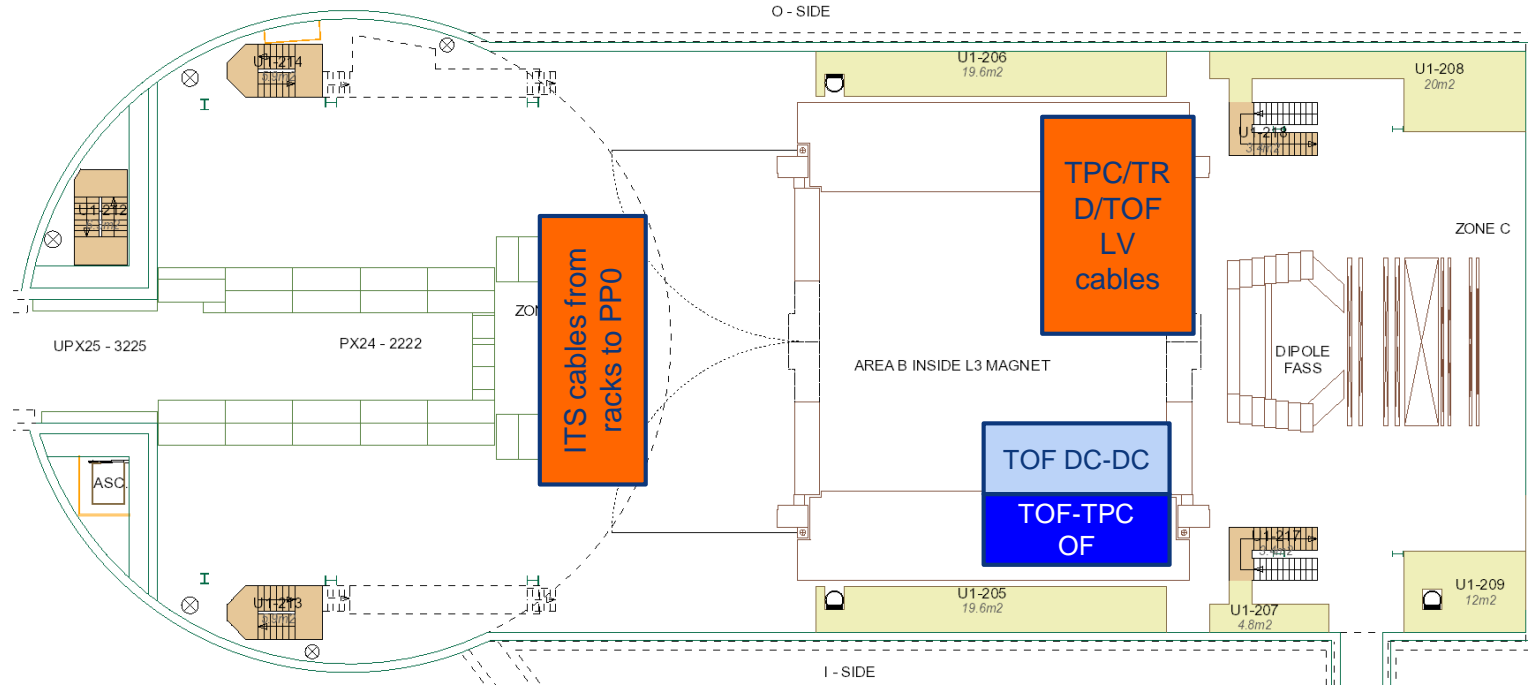
Philippe: power cord for TPC HV rack



UX25 activities w40 – Tue 1 Oct 2019

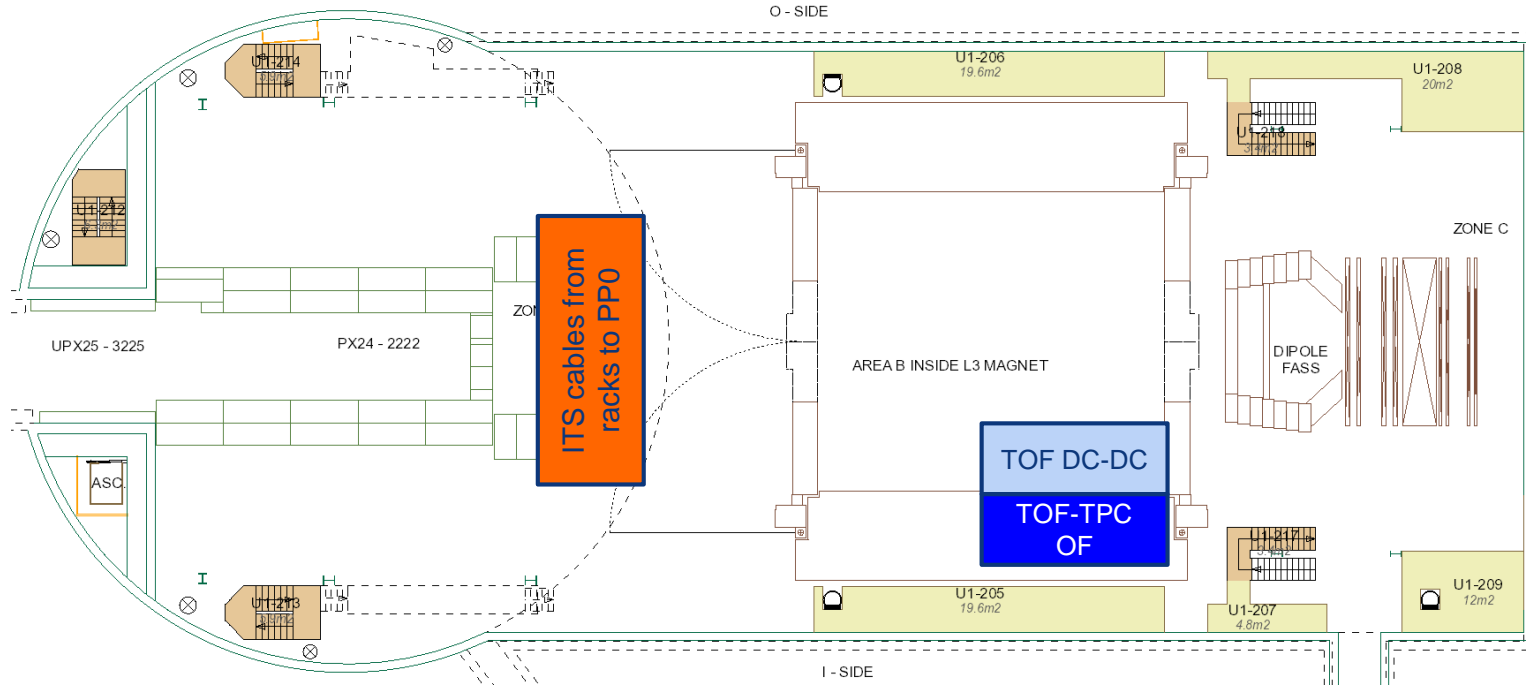
Maintenance cavern lift (AS-724) from 6:00 to 8:00

ITS: park Nichef van in SX2 overnight



UX25 activities w40 – Wed 2 Oct 2019

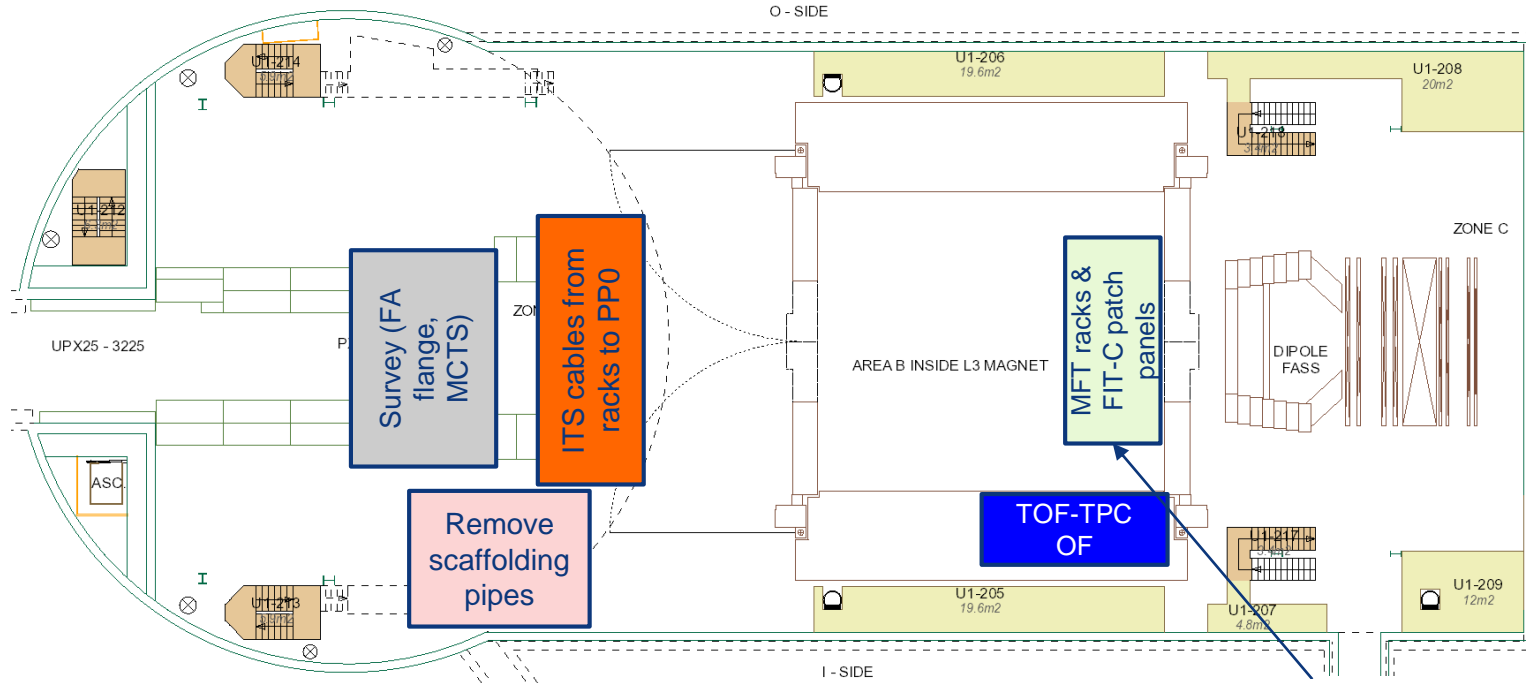
MCH: X-ray tests ST1 quadrants (Wed-Fri)



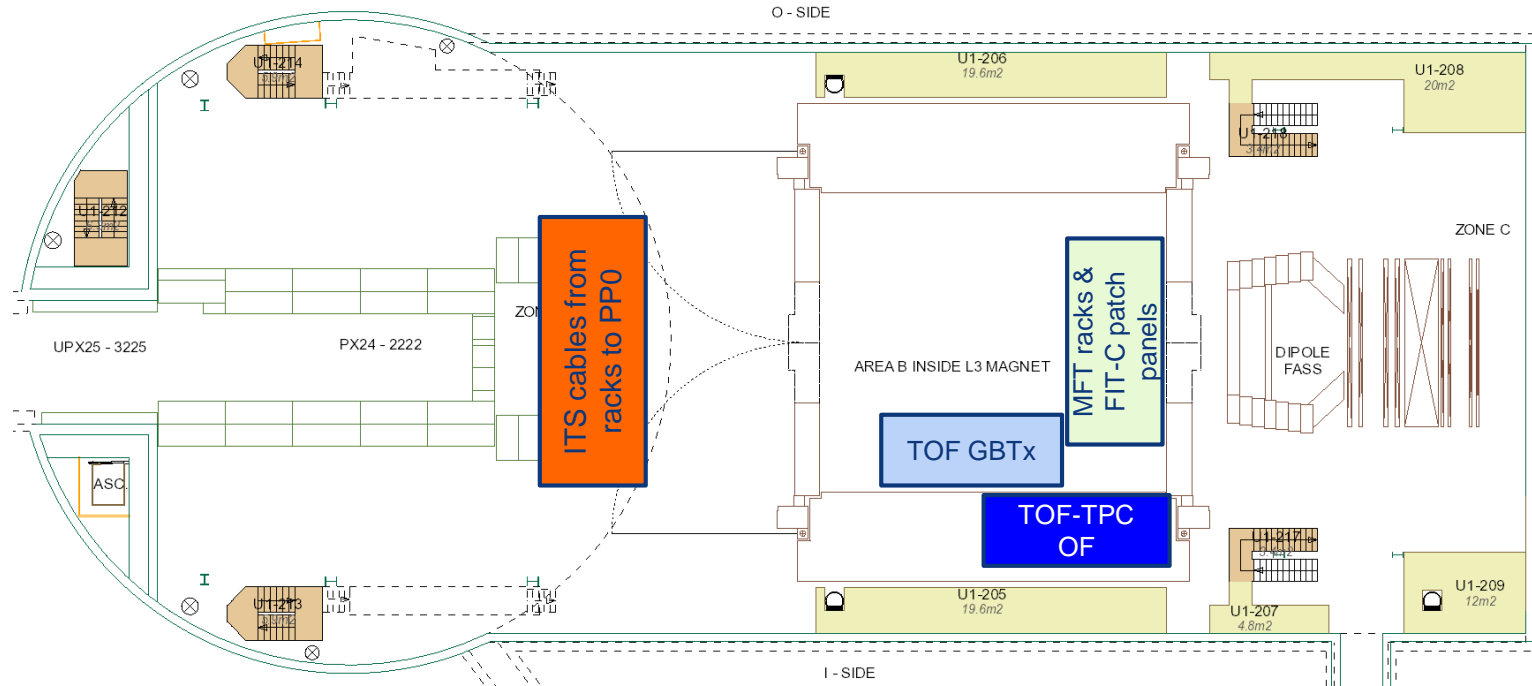
UX25 activities w40 – Thu 3 Oct 2019



EN-EL: BE1 load test – possibility to have a 400kV power cut from 10:00 to 12:00 and from 15:00 to 17:00

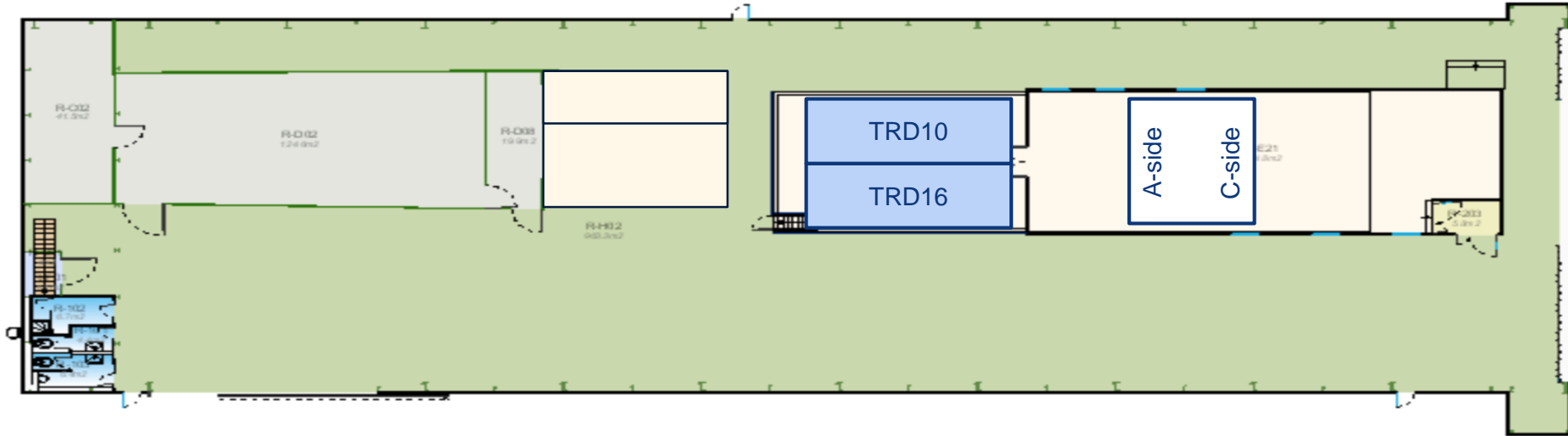


UX25 activities w40 – Fri 4 Oct 2019



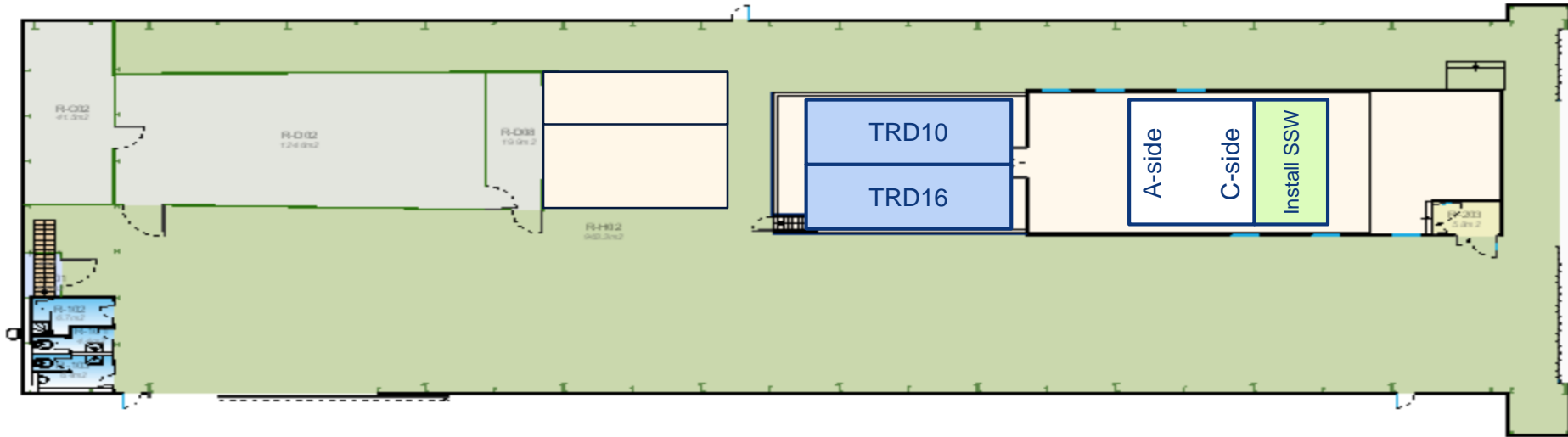
SXL2 activities w40 – Mon 30 Sep 2019

ALTEAD+P2tech: open cleanroom roof and cleanroom back-wall (2.5h), move TPC by 10-12cm towards Saleve, remove small scaffolding and MWPCs



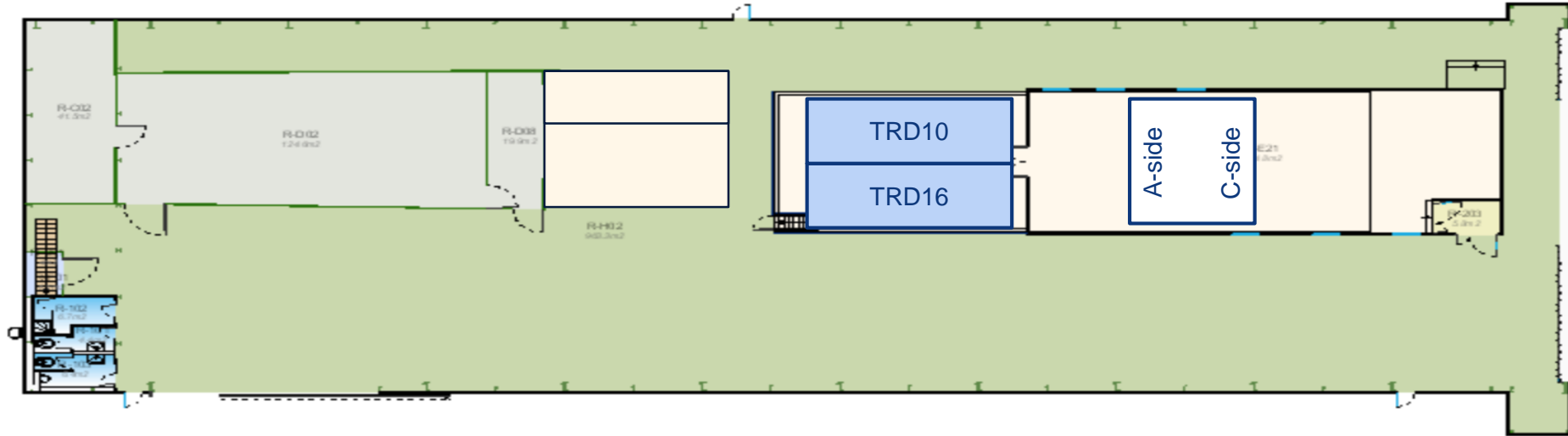
SXL2 activities w40 – Tue 1 Oct 2019

ALTEAD+P2tech: remove Daldrop filter, manipulator, modify YP, install SSW C-side



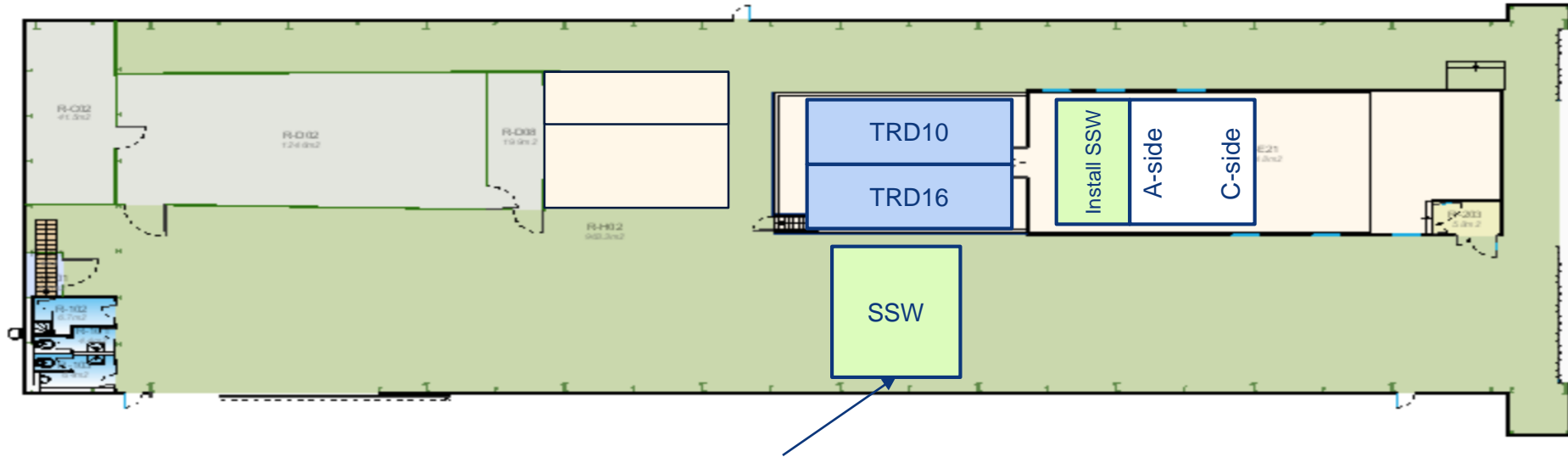
SXL2 activities w40 – Wed 2 Oct 2019

ALTEAD+P2tech: install I-bars C-side, survey, end-plate adjustment, install grounding bars (A-side) with nacelle



SXL2 activities w40 – Thu 3 Oct 2019

ALTEAD+P2tech: remove A-side I-bars, install A-side SSW



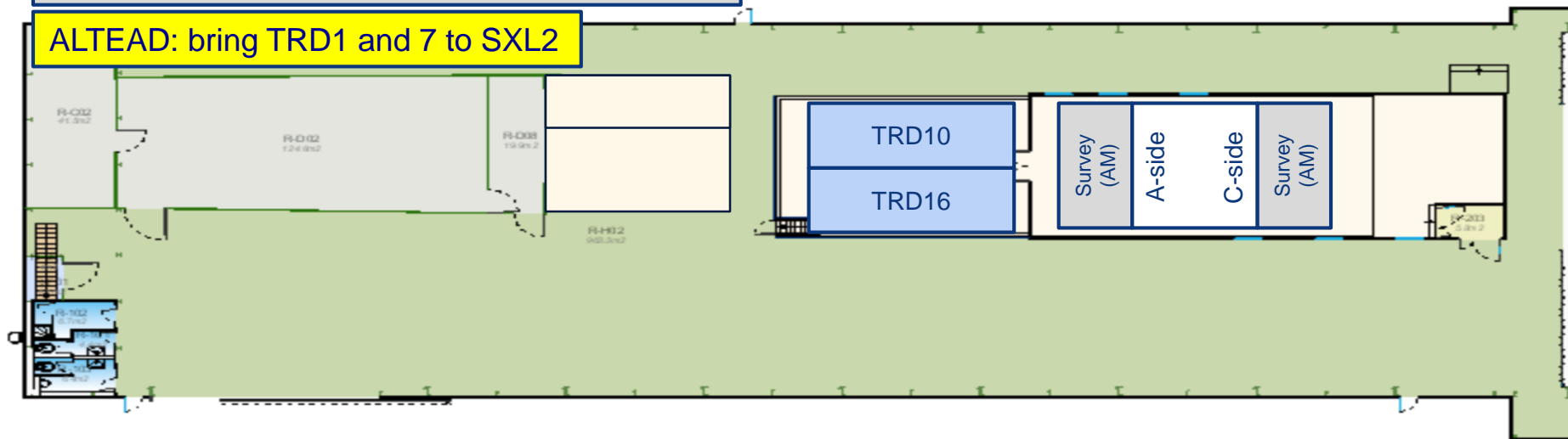
ALTEAD+TPC+P2tech: install A-side SSW onto lifting jig

SXL2 activities w40 – Fri 4 Oct 2019

ALTEAD: install scaffolding, gas pipes and 2 racks, remove nacelle, close cleanroom roof

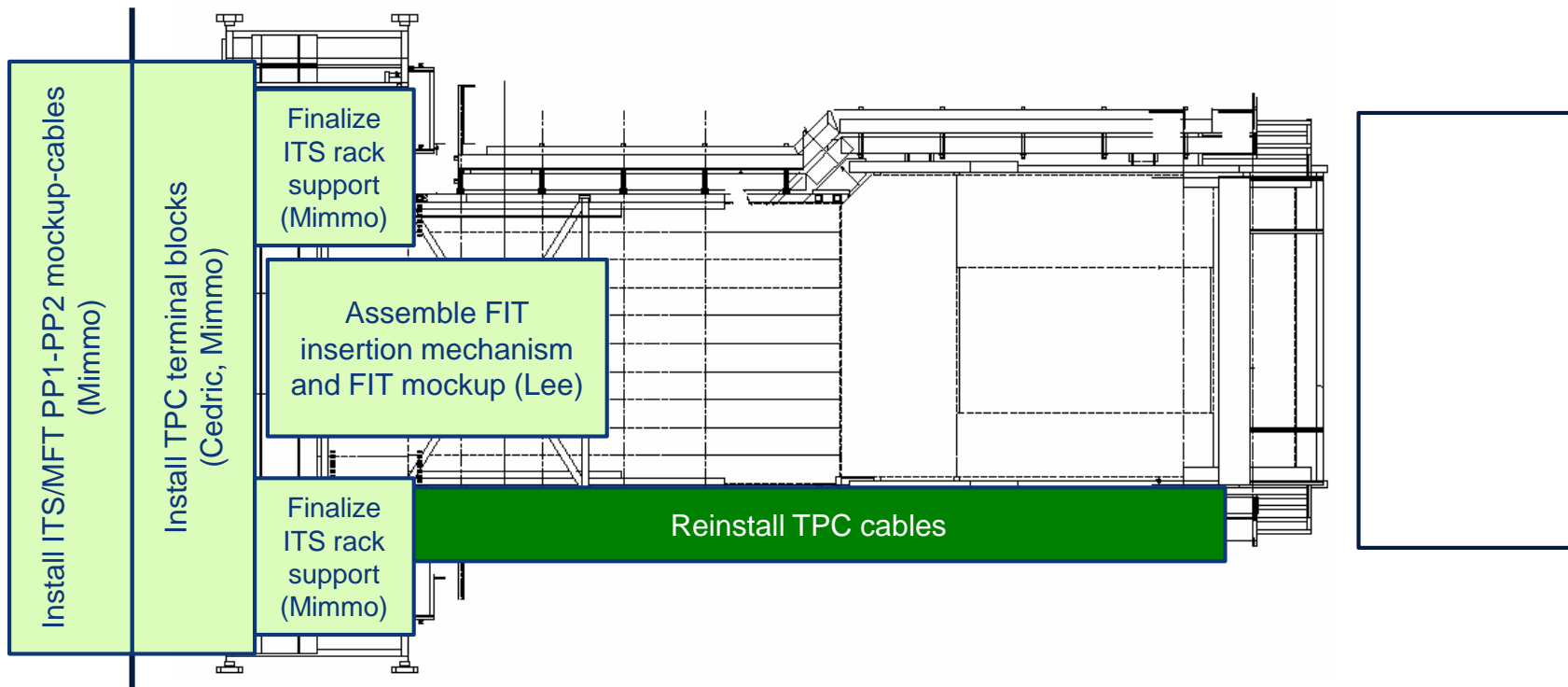
EN-EL: repair wall outlet inside cleanroom (PM)

ALTEAD: bring TRD1 and 7 to SXL2

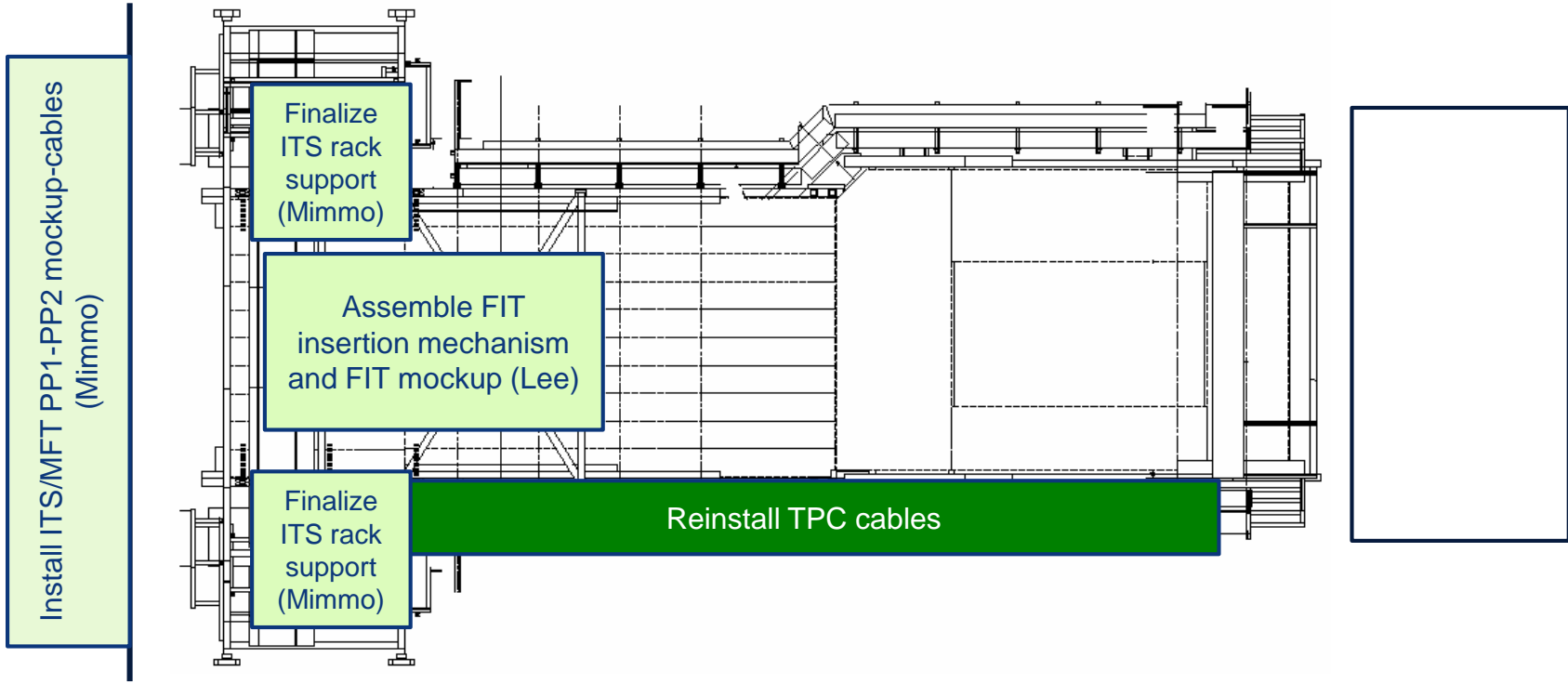


Miniframe activities w40 – Mon 30 Sep 2019

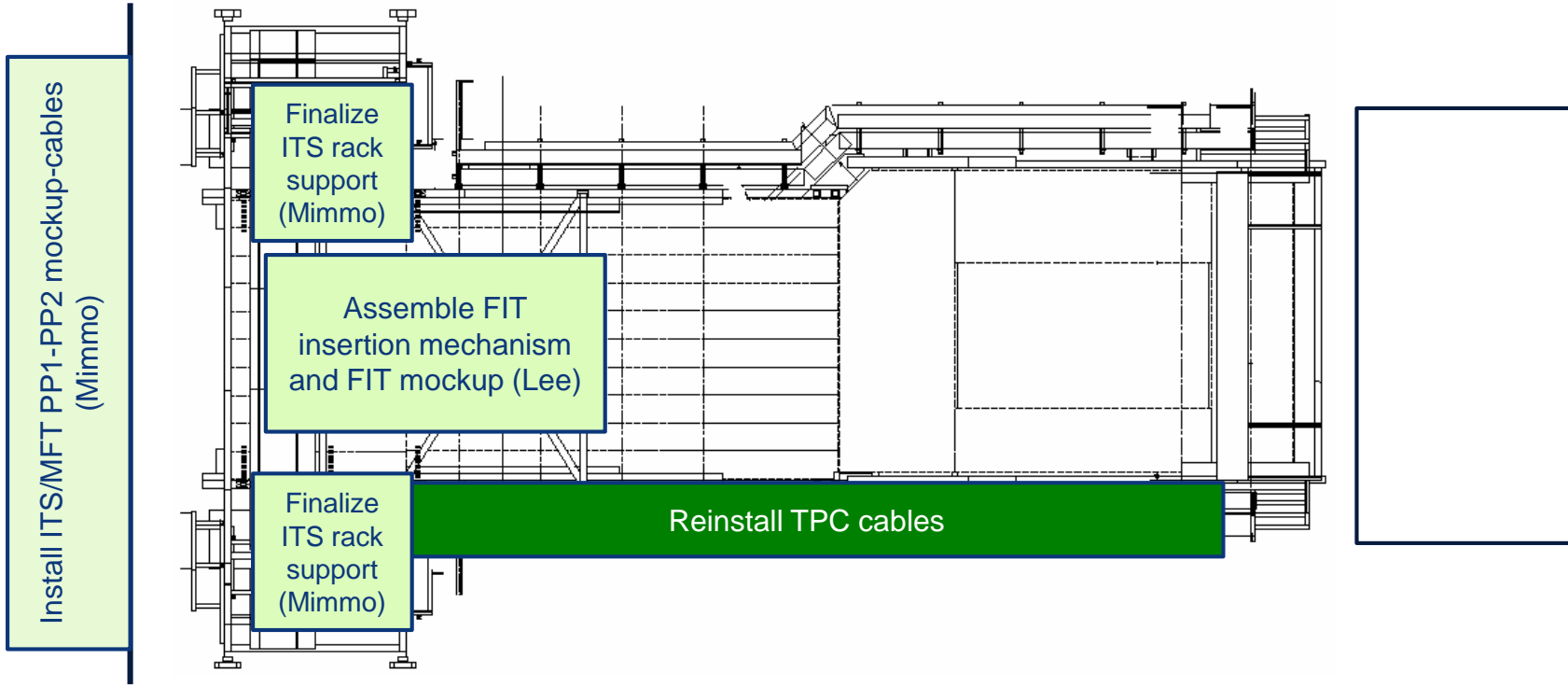
Miniframe general cleaning



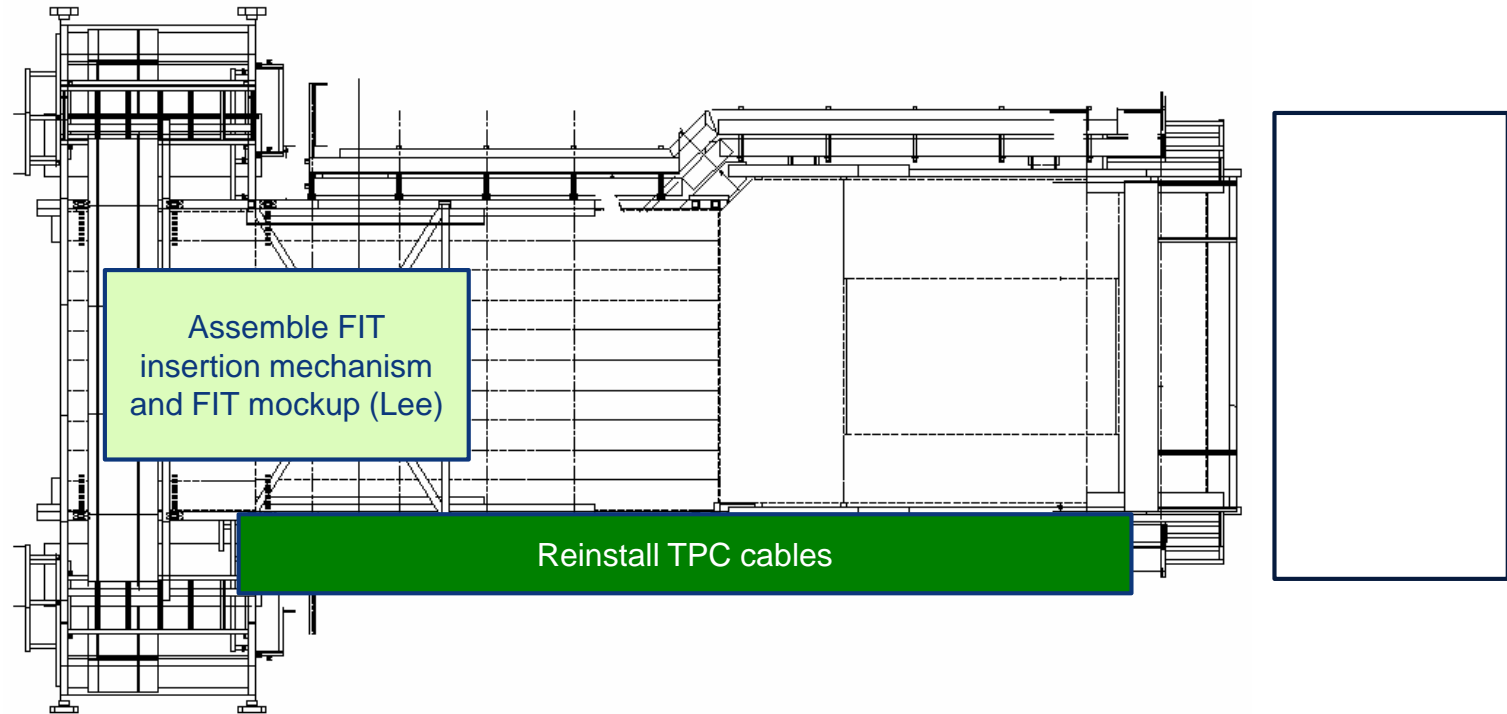
Miniframe activities w40 – Tue 1 Oct 2019



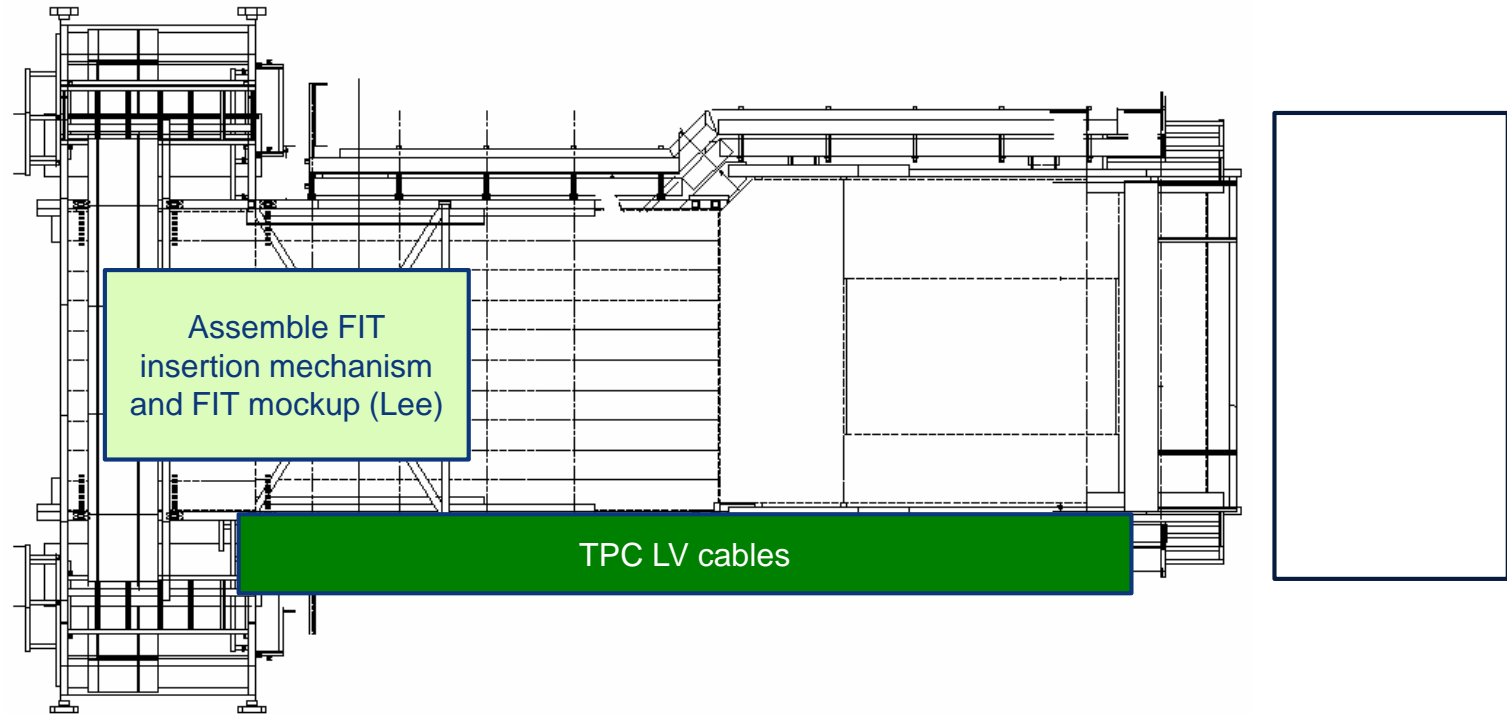
Miniframe activities w40 – Wed 2 Oct 2019



Miniframe activities w40 – Thu 3 Oct 2019



Miniframe activities w40 – Fri 4 Oct 2019



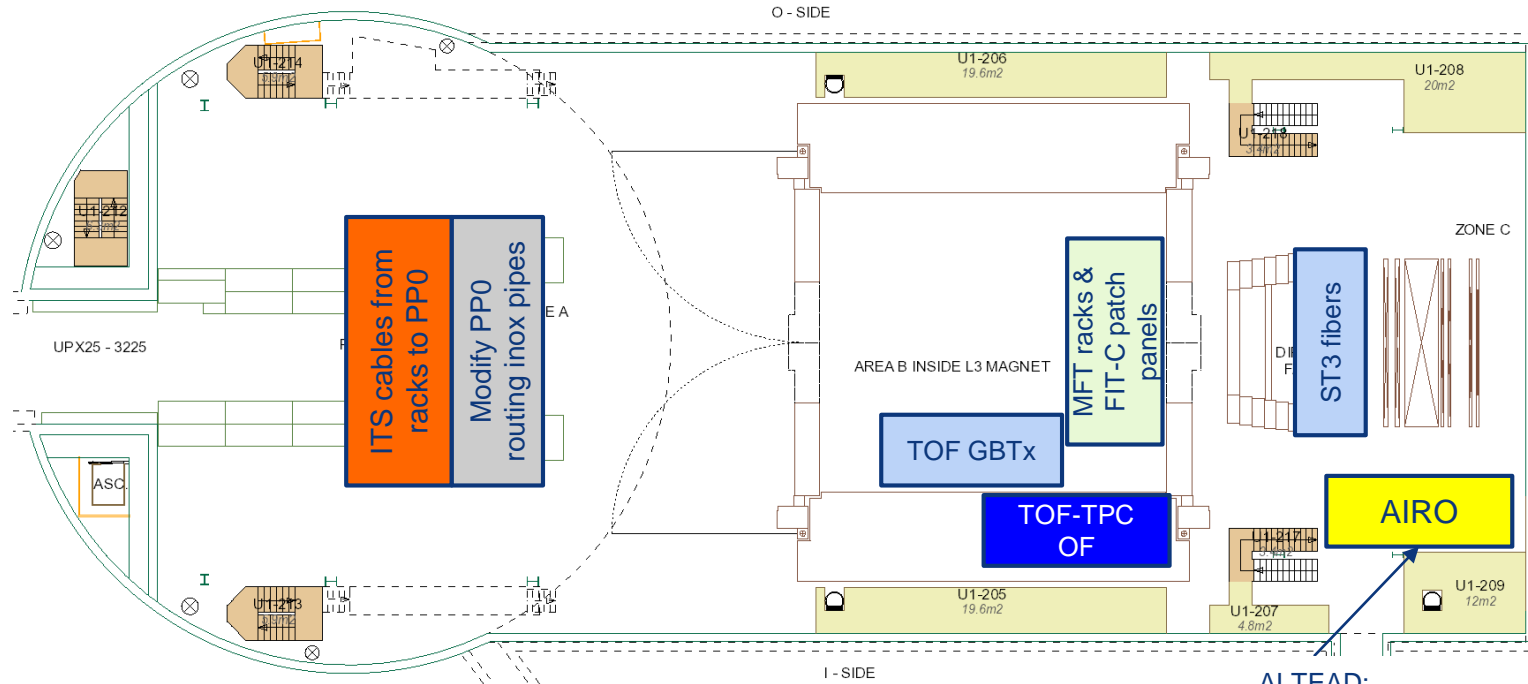
Day-by-day sequence w41



UX25 activities w41 – Mon 7 Oct 2019

CR0: test fire detection matrix with HSE (whole week)

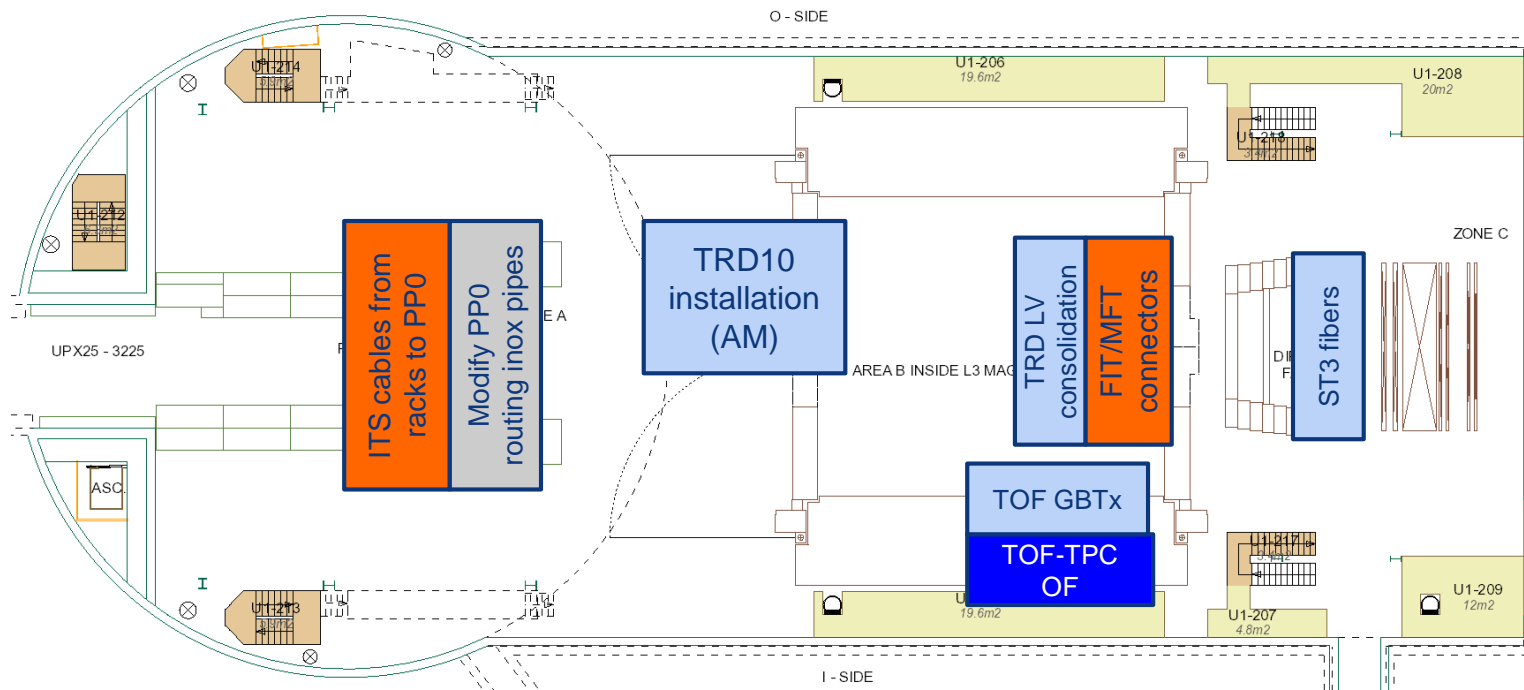
SMB: floor painting corridor b.581



ALTEAD:
bring nacelle
here

UX25 activities w41 – Tue 8 Oct 2019

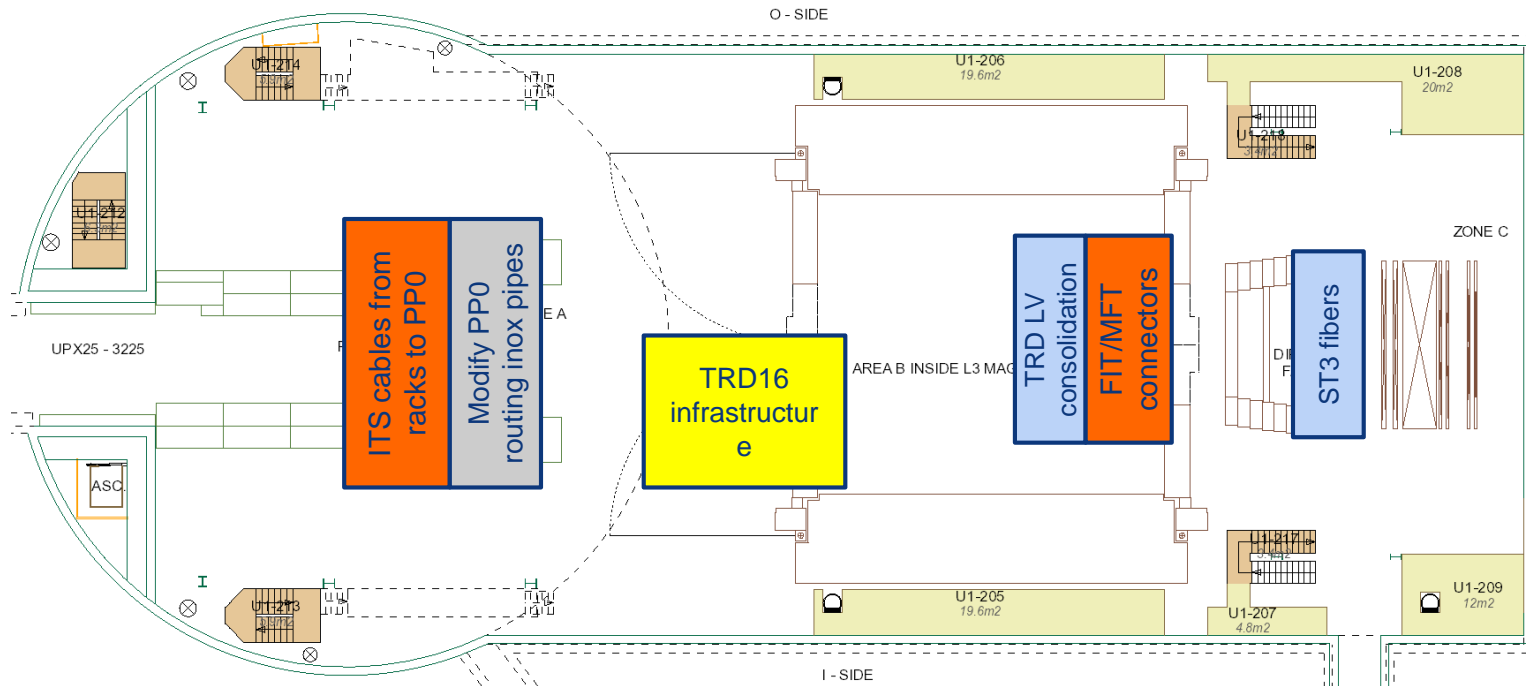
EN-CV: UW maintenance: STOP UX mixed water



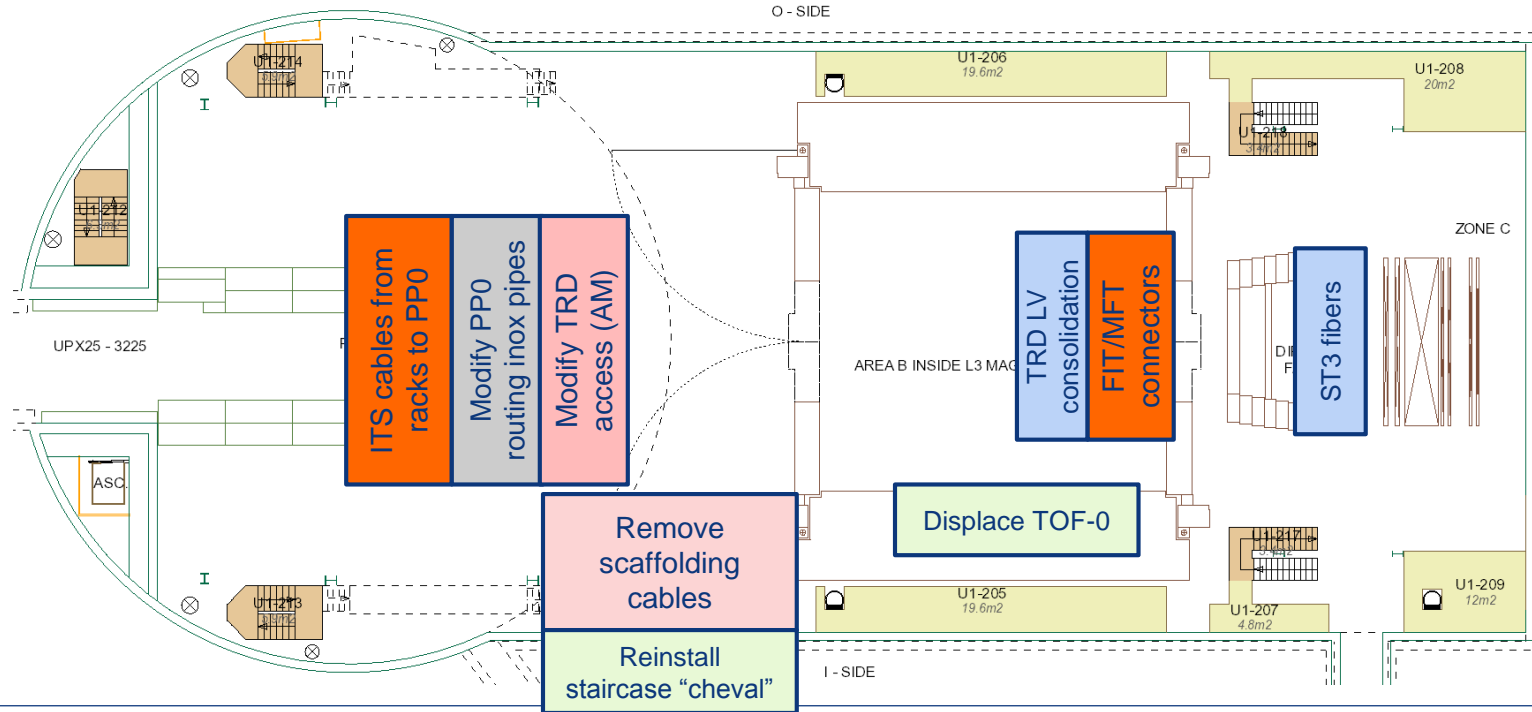
UX25 activities w41 – Wed 9 Oct 2019

EN-CV: UW maintenance: STOP UX mixed water

Bring up TRD platform and inverse access (10→16)



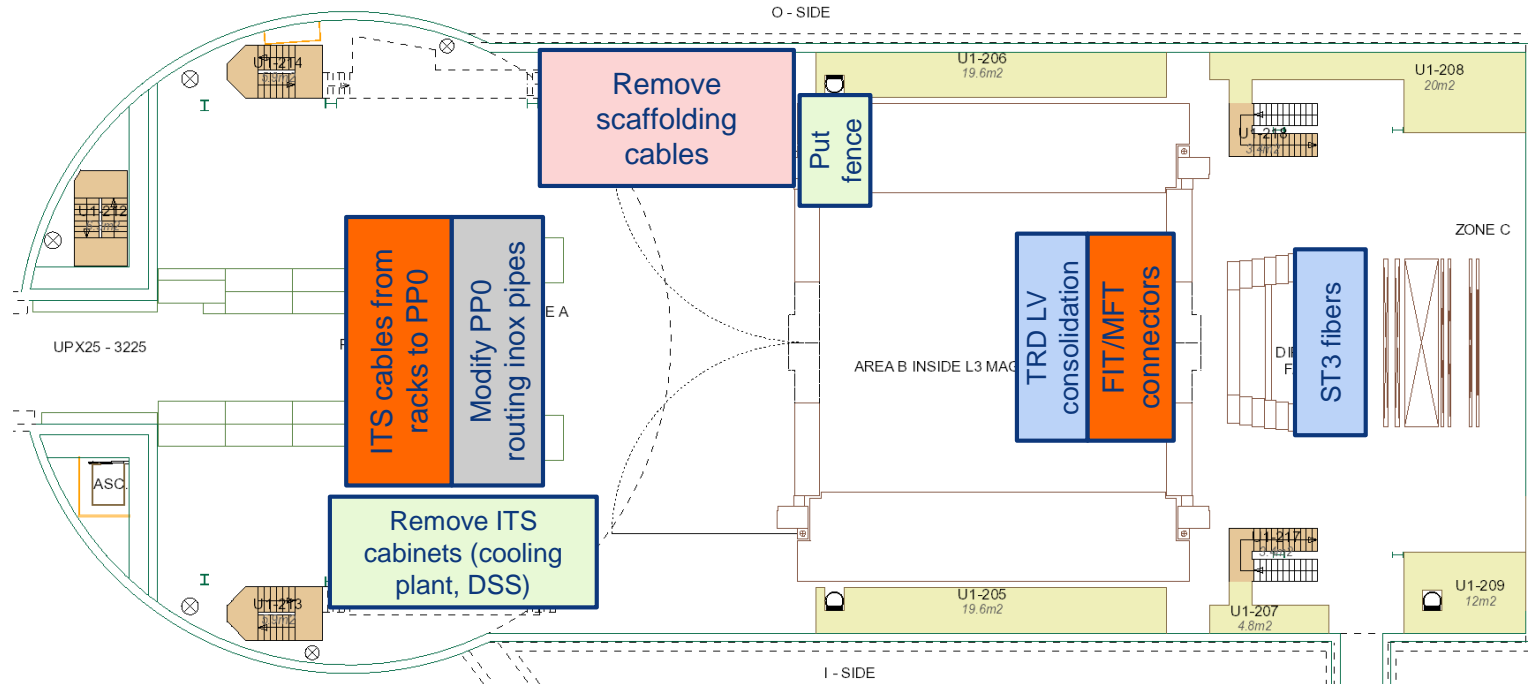
UX25 activities w41 – Thu 10 Oct 2019



UX25 activities w41 – Fri 11 Oct 2019

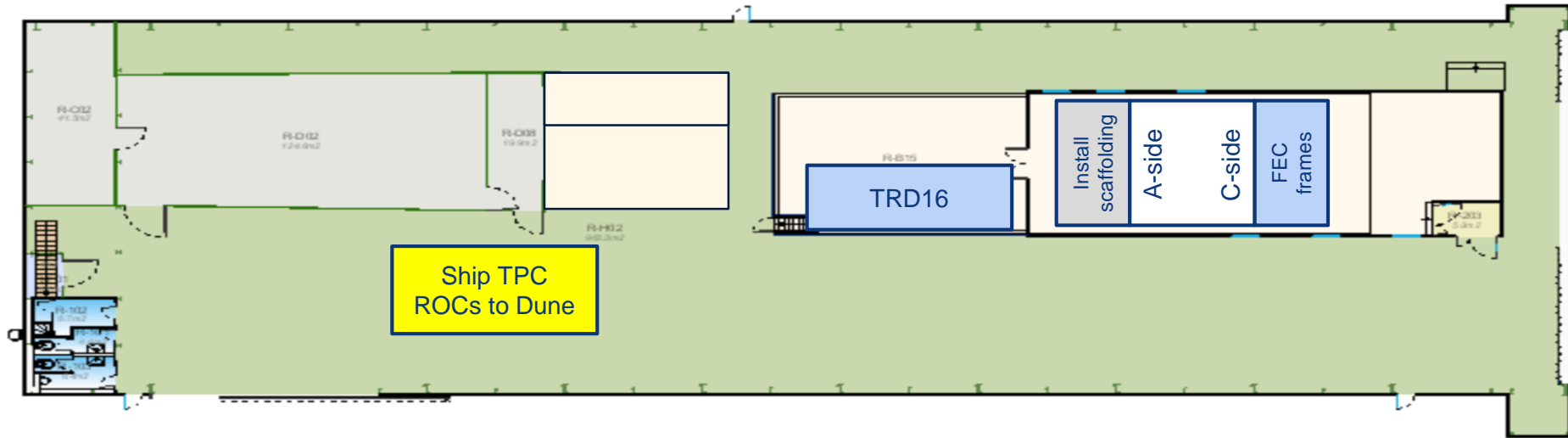
CR0: close all Roptecs (Philippe)

Maintenance cavern crane → no crane



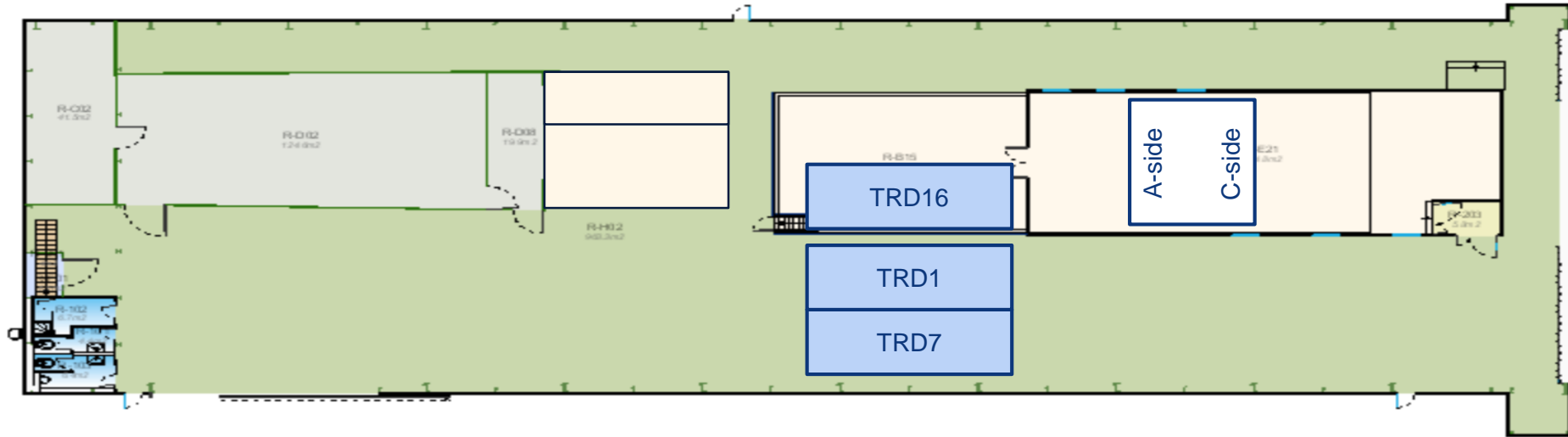
SXL2 activities w41 – Mon 7 Oct 2019

Install YP extension (Yannick, Samuel)

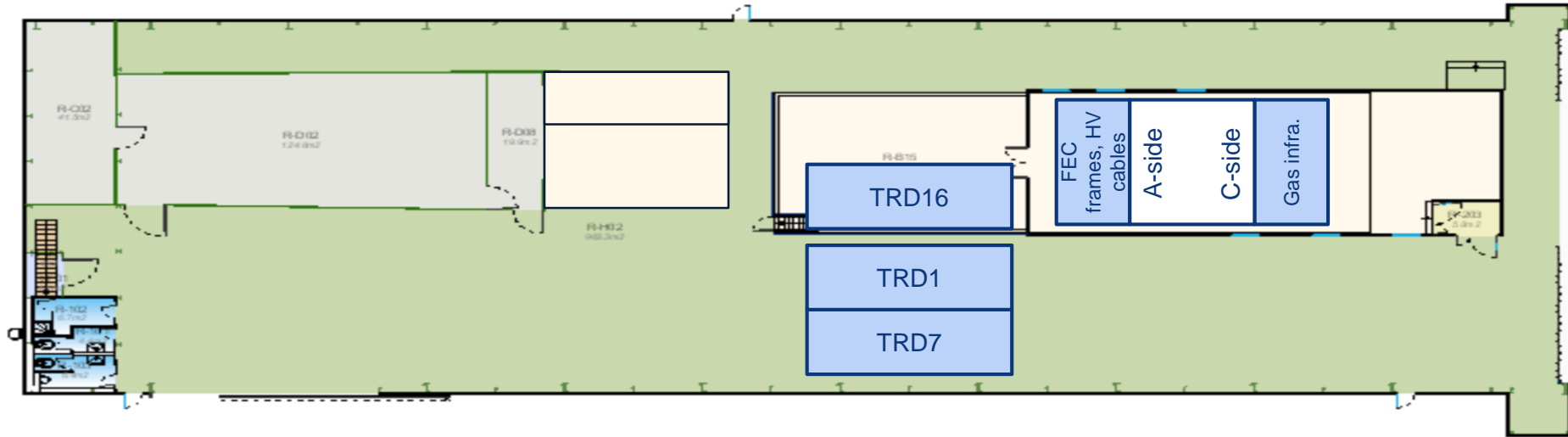


SXL2 activities w41 – Tue 8 Oct 2019

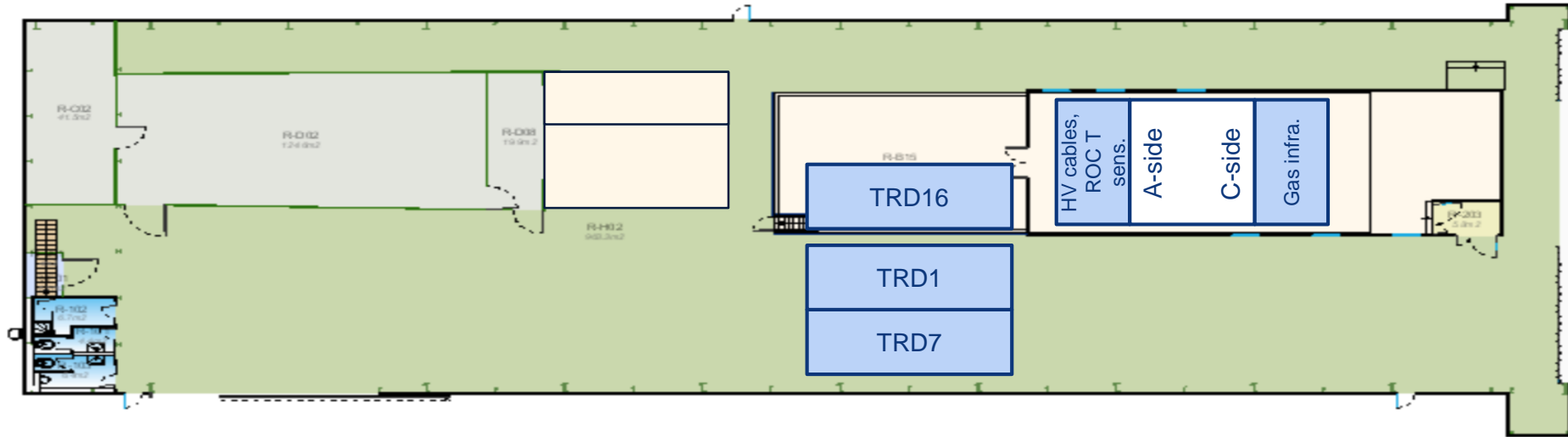
SXL2 cleanroom cleaning (Dosim)



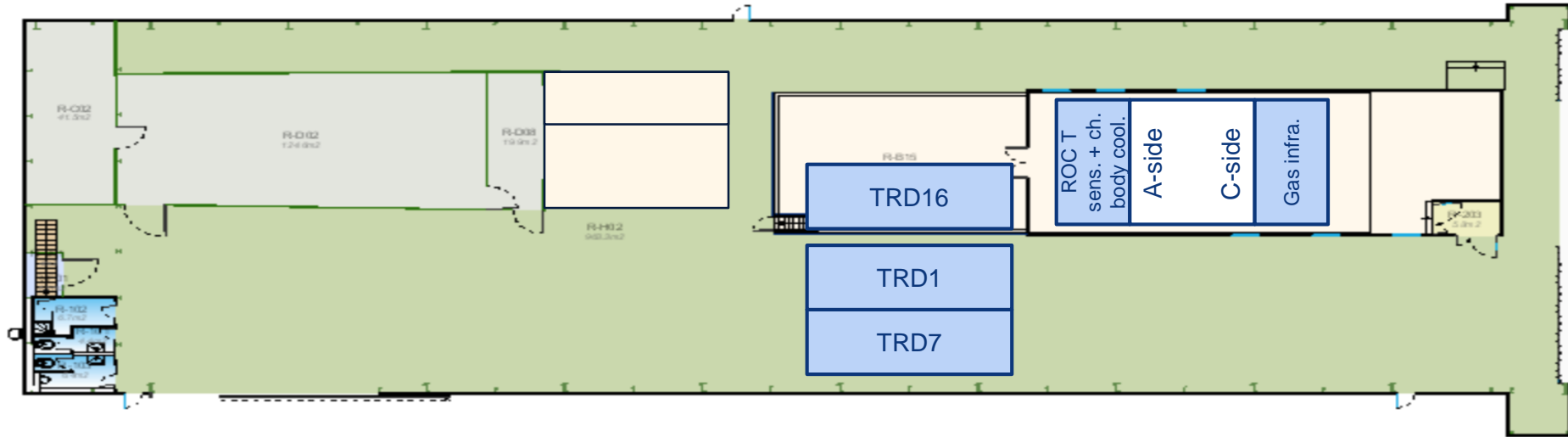
SXL2 activities w41 – Wed 9 Oct 2019



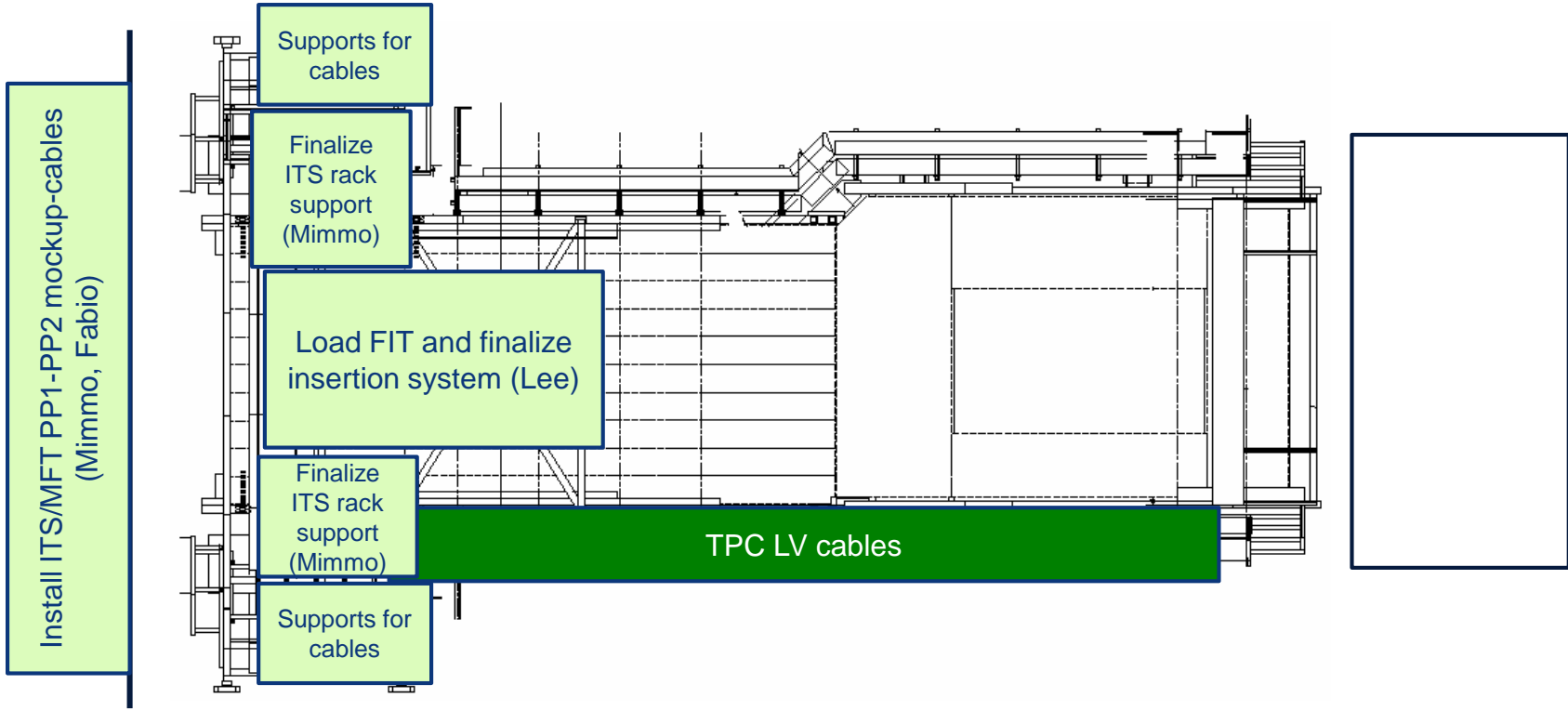
SXL2 activities w41 – Thu 10 Oct 2019



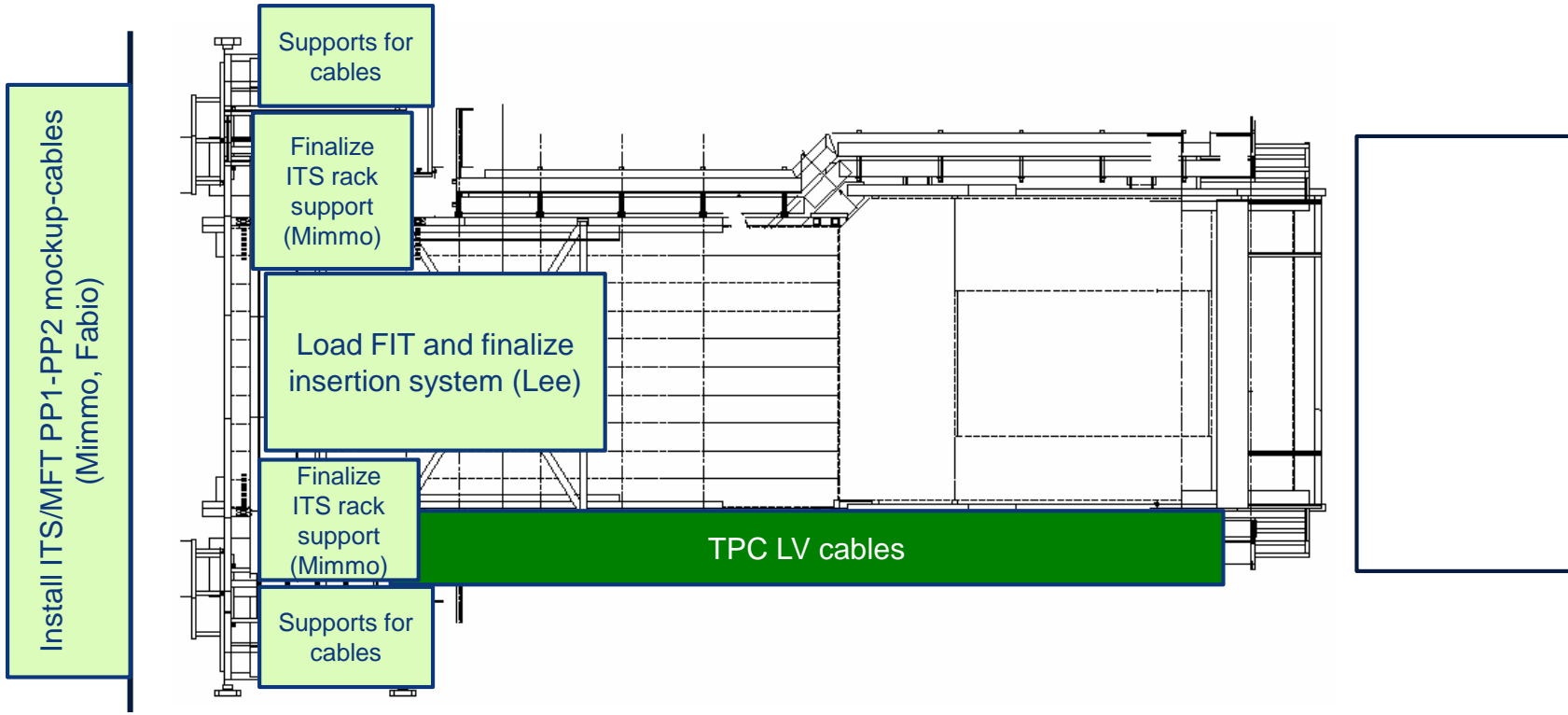
SXL2 activities w41 – Fri 11 Oct 2019



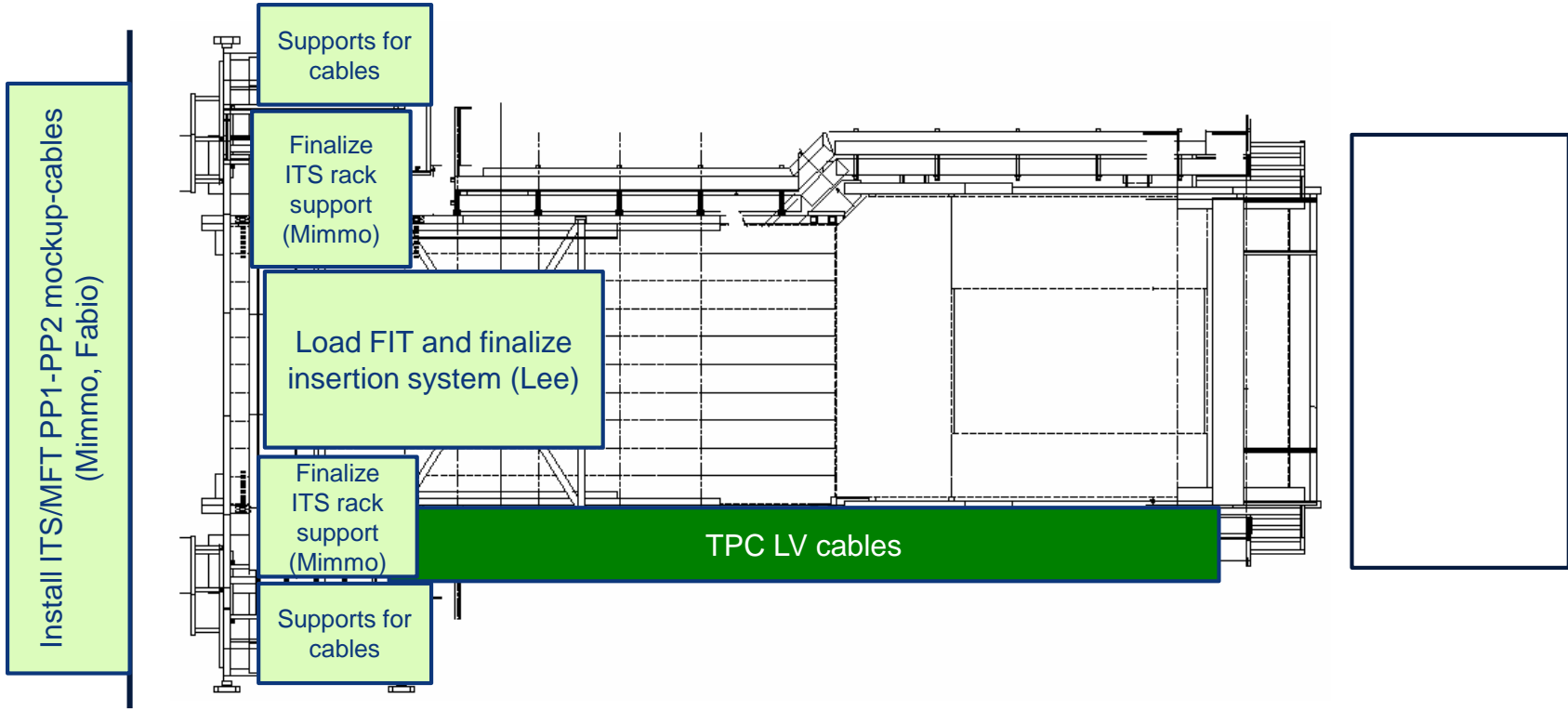
Miniframe activities w41 – Mon 7 Oct 2019



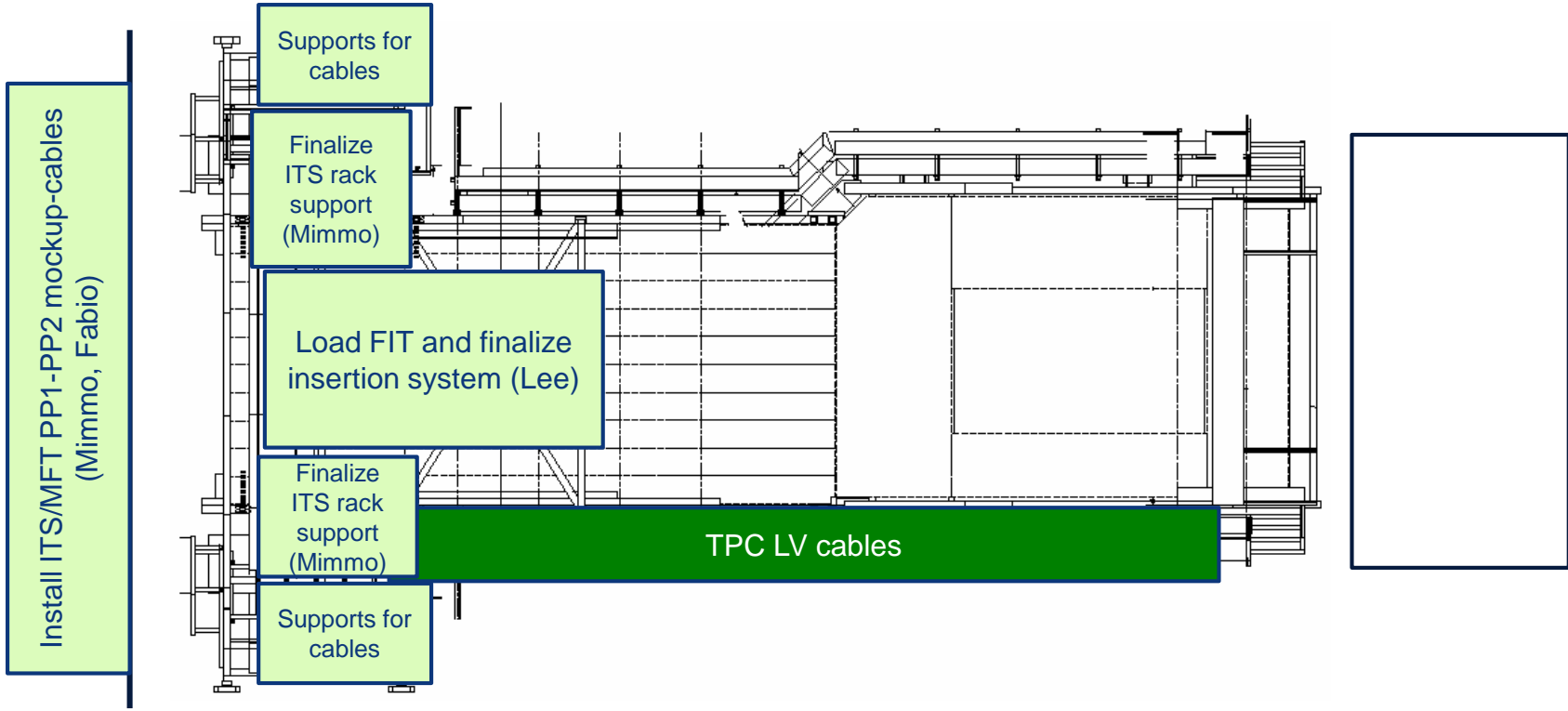
Miniframe activities w41 – Tue 8 Oct 2019



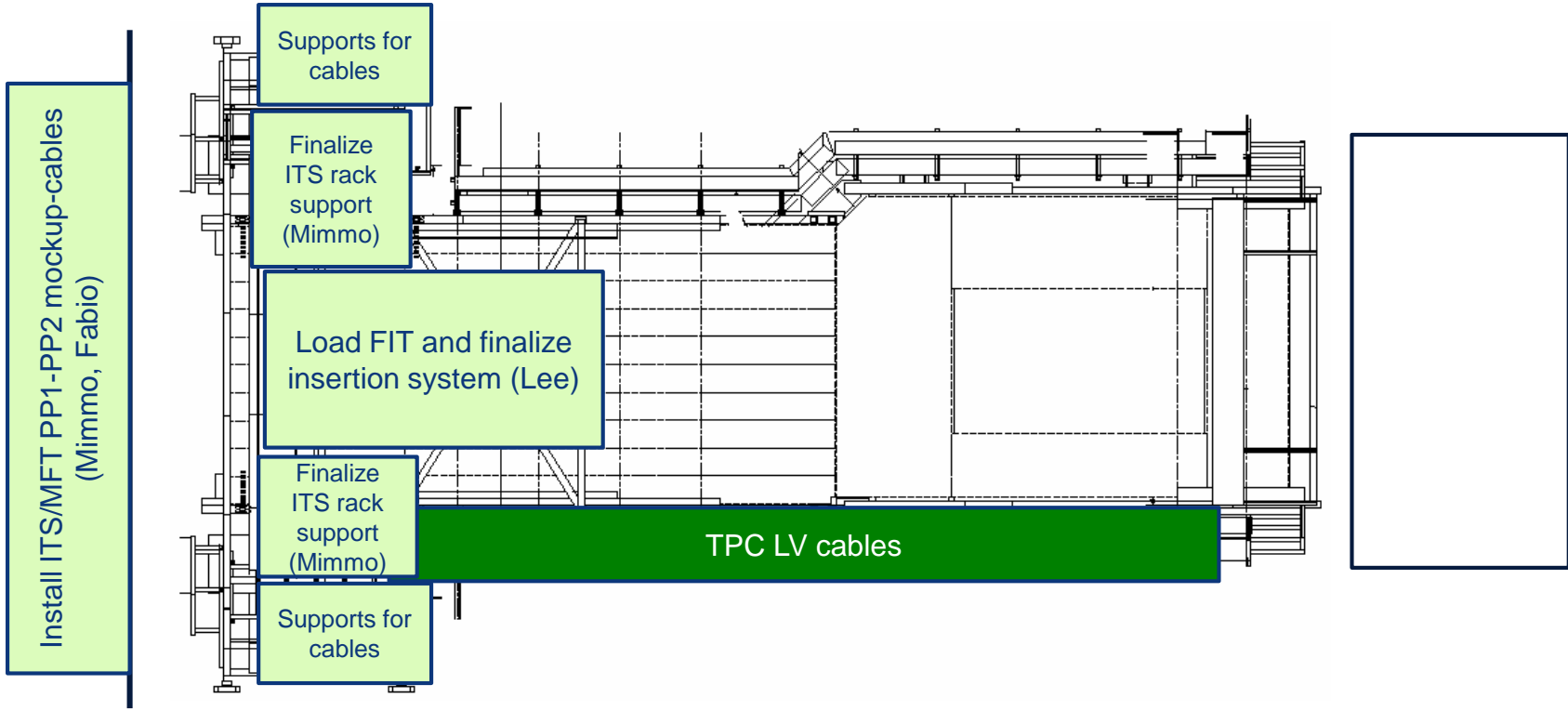
Miniframe activities w41 – Wed 9 Oct 2019



Miniframe activities w41 – Thu 10 Oct 2019



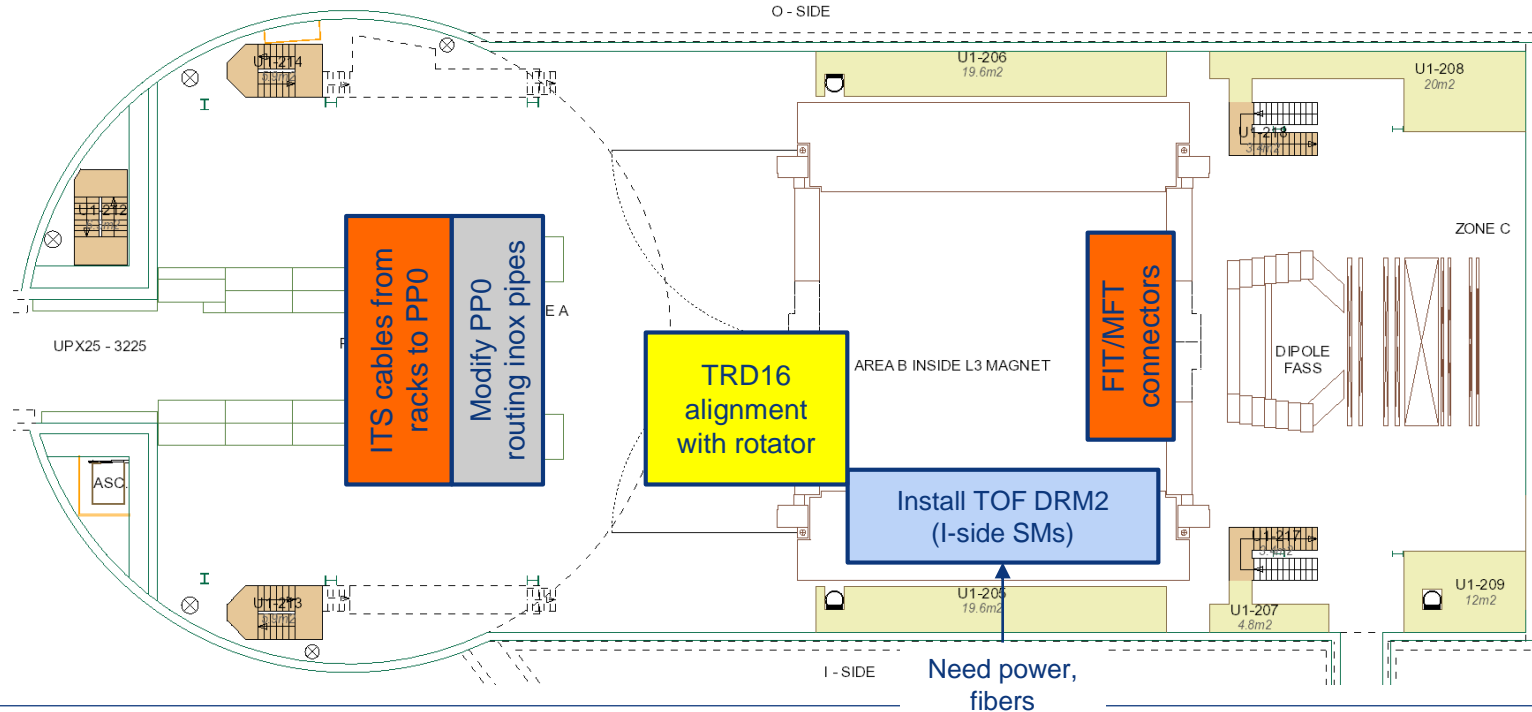
Miniframe activities w41 – Fri 11 Oct 2019



Day-by-day sequence w42

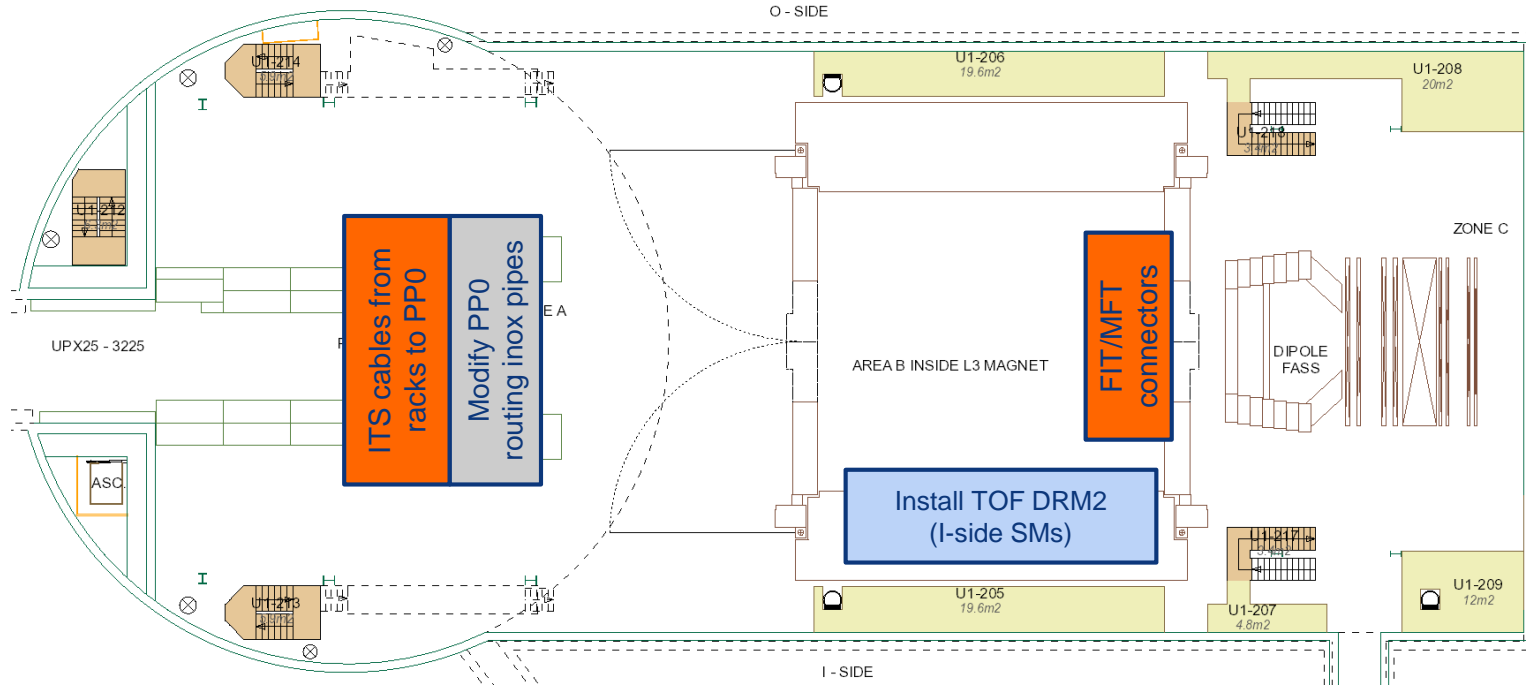


UX25 activities w42 – Mon 14 Oct 2019

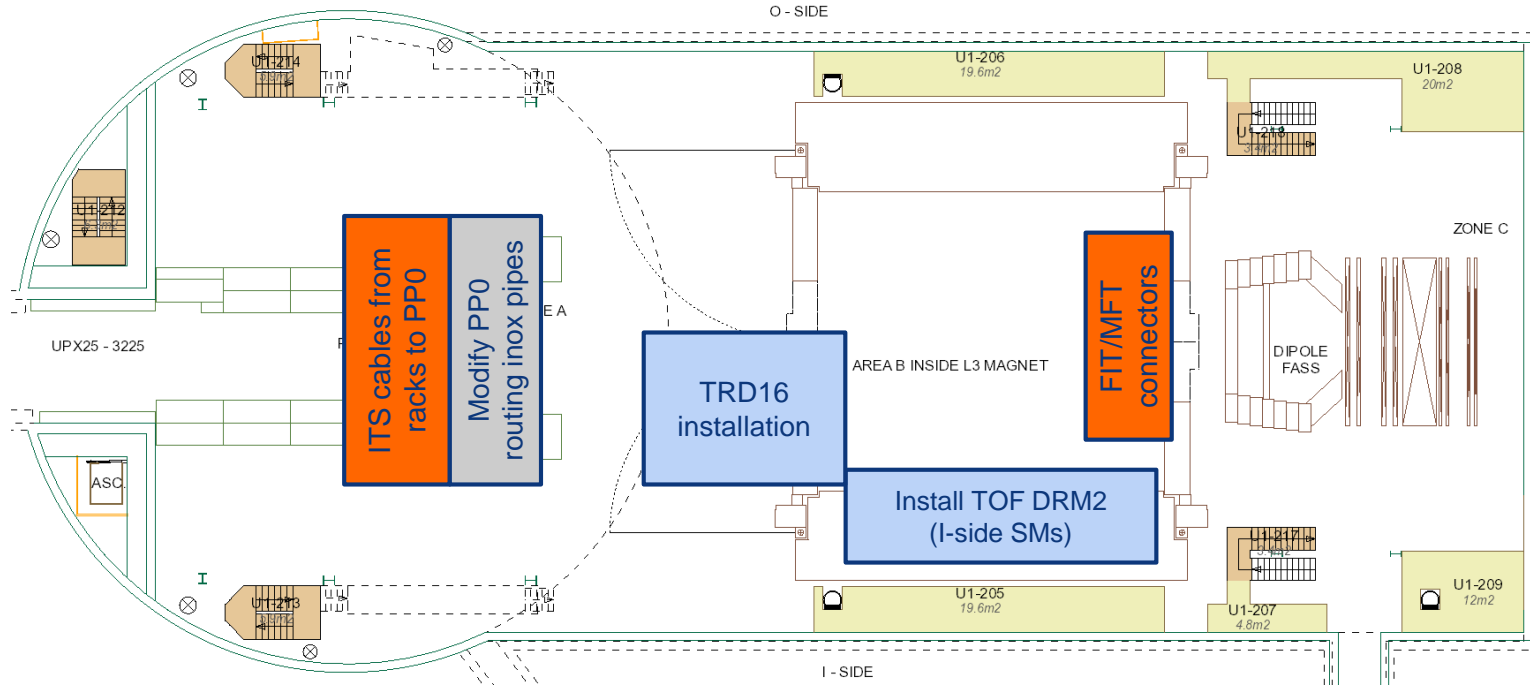


UX25 activities w42 – Tue 15 Oct 2019

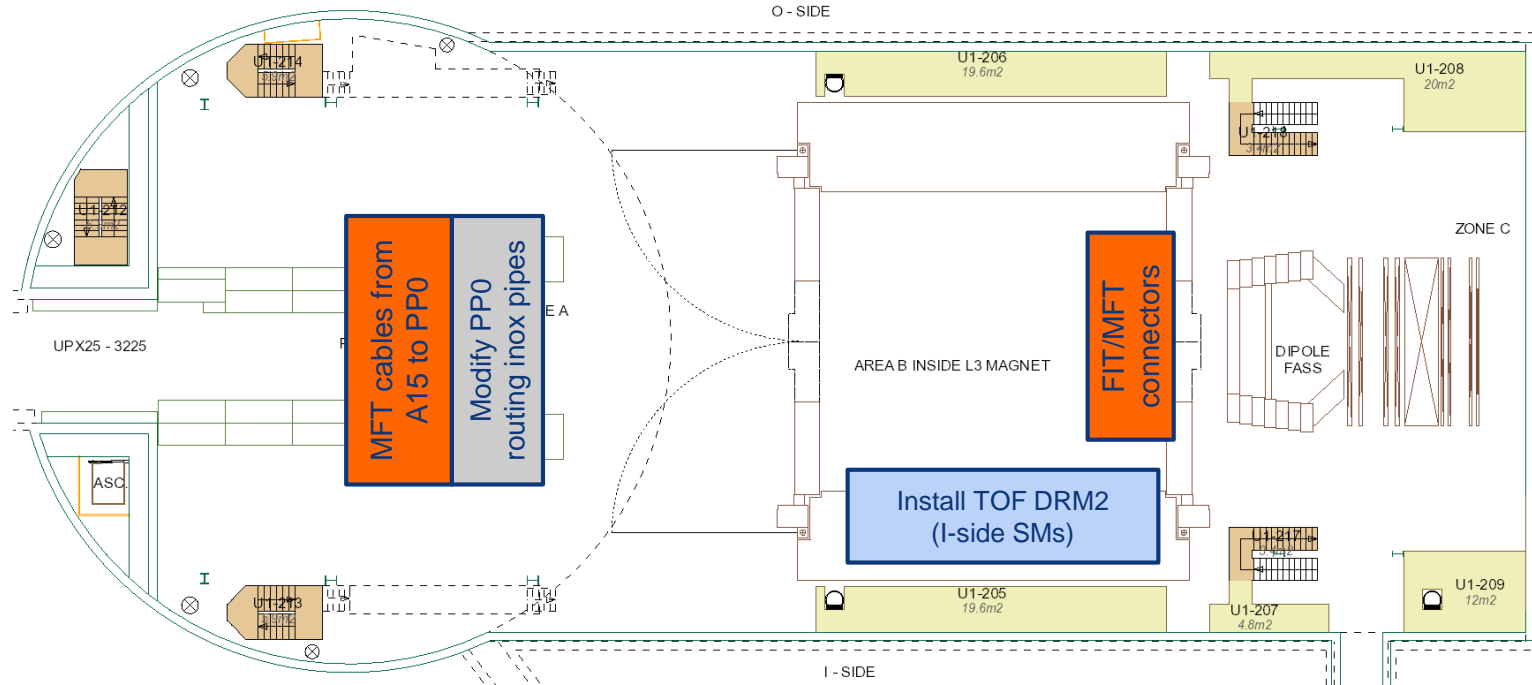
ALTEAD+TRD: bring TRD16 to SX2 and insert it into rotator



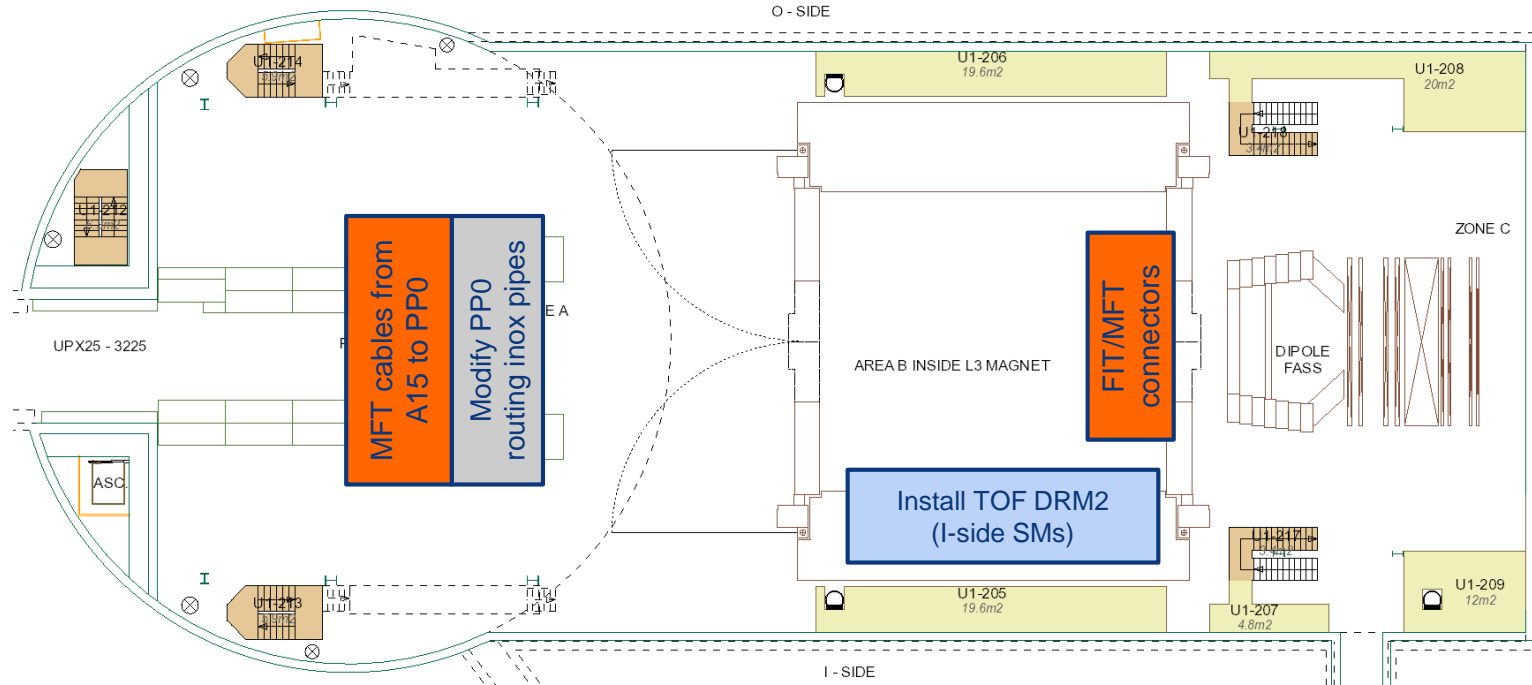
UX25 activities w42 – Wed 16 Oct 2019



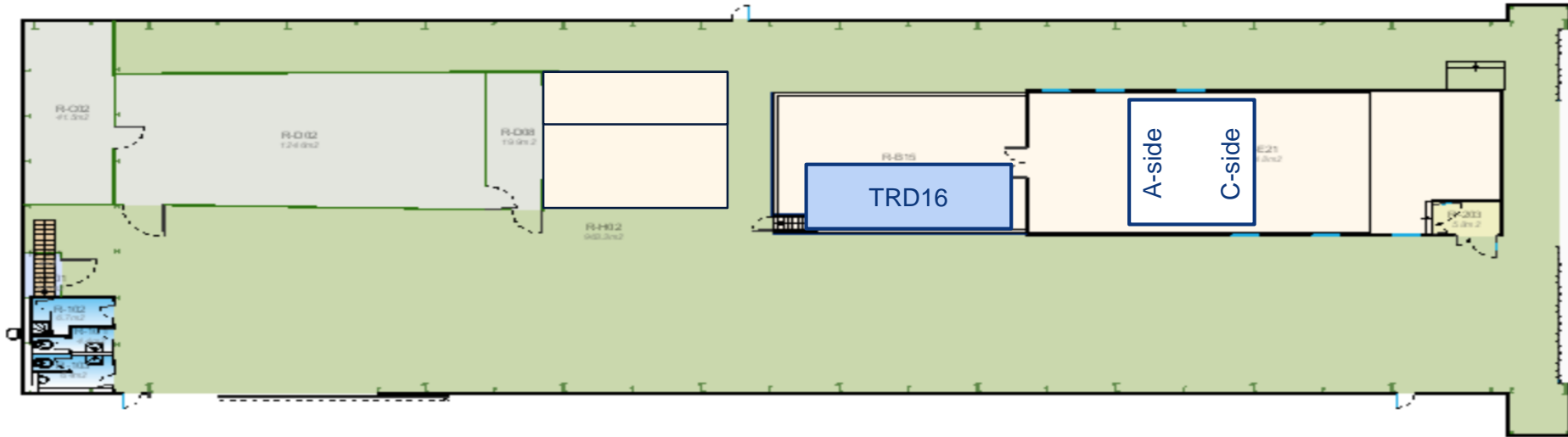
UX25 activities w42 – Thu 17 Oct 2019



UX25 activities w42 – Fri 18 Oct 2019

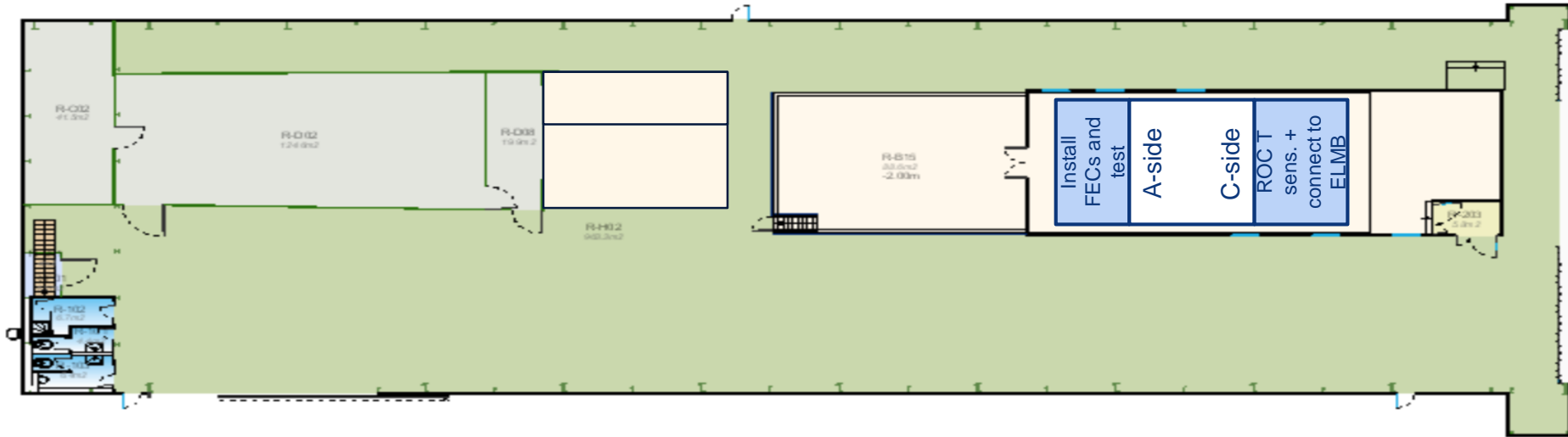


SXL2 activities w42 – Mon 14 Oct 2019

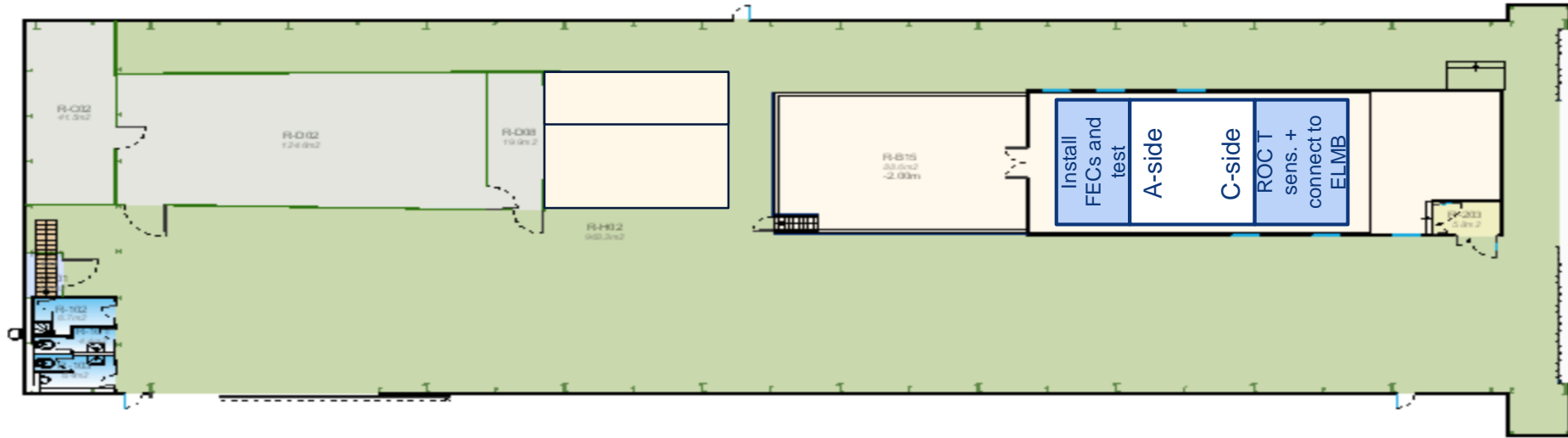


SXL2 activities w42 – Tue 15 Oct 2019

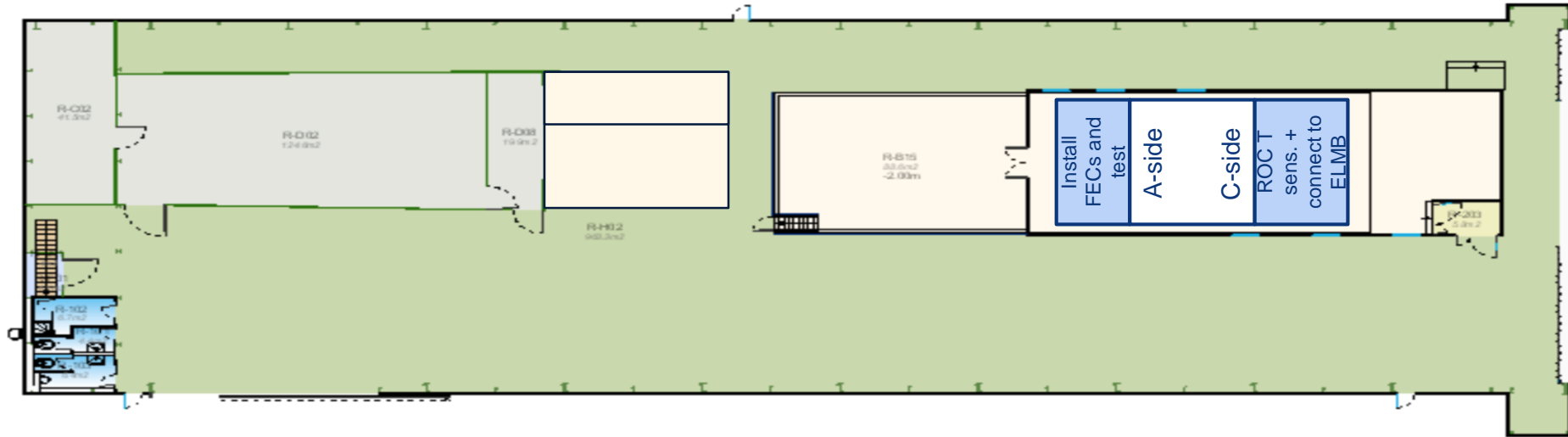
Fill TPC with gas mixture (Ne-CO2-N2)



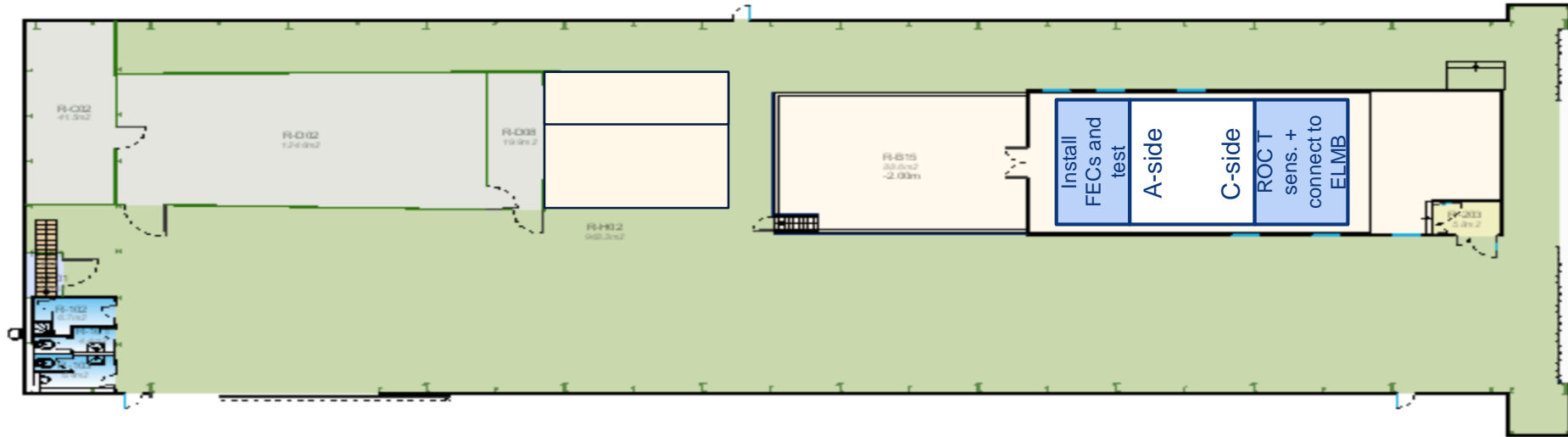
SXL2 activities w42 – Wed 16 Oct 2019



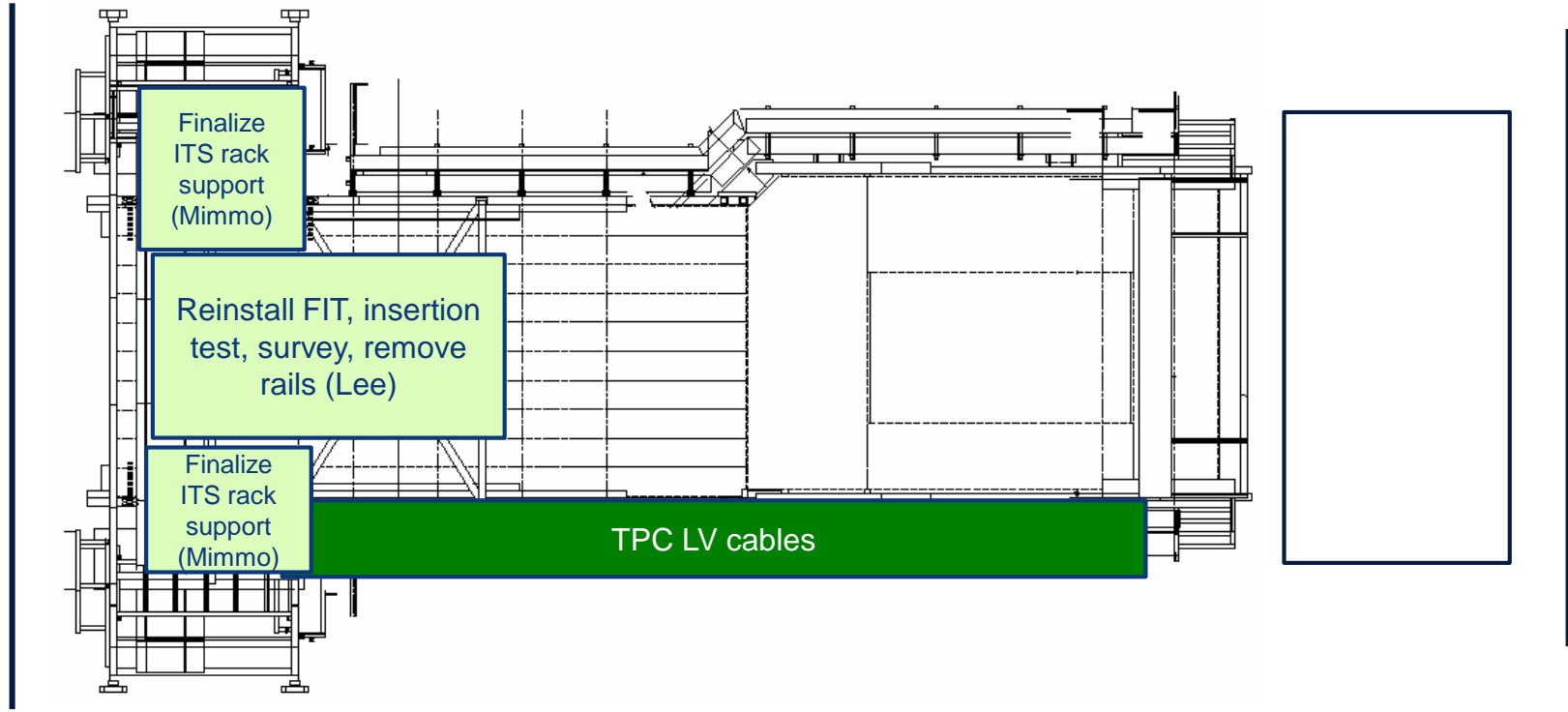
SXL2 activities w42 – Thu 17 Oct 2019



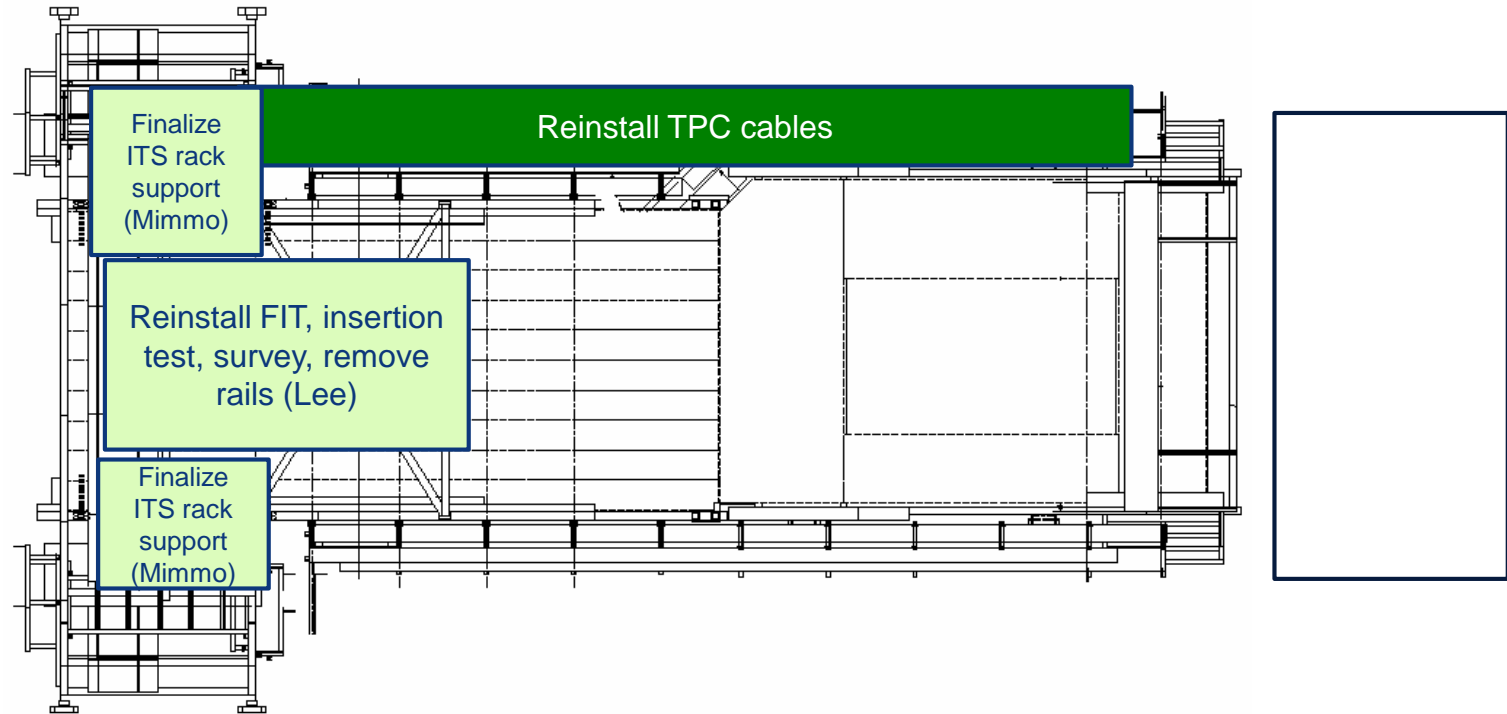
SXL2 activities w42 – Fri 18 Oct 2019



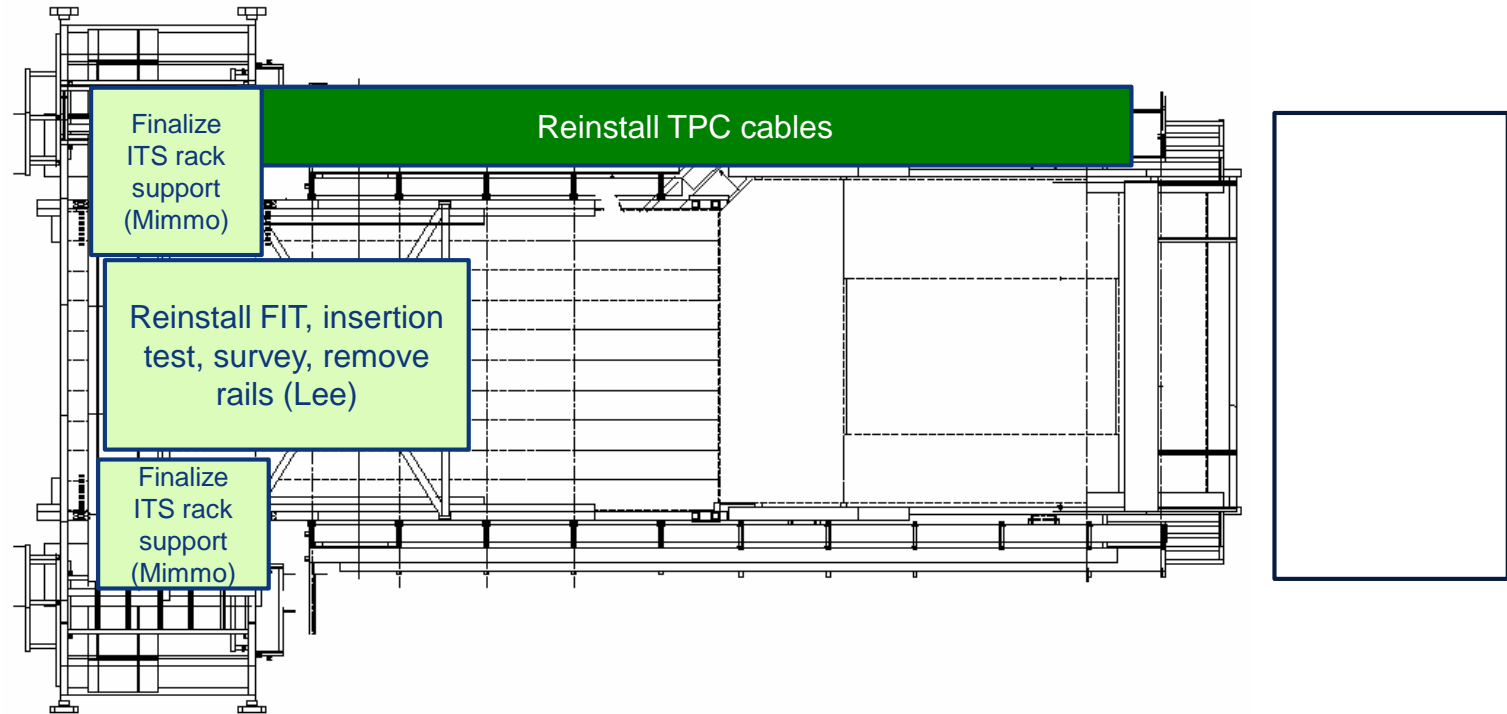
Miniframe activities w42 – Mon 14 Oct 2019



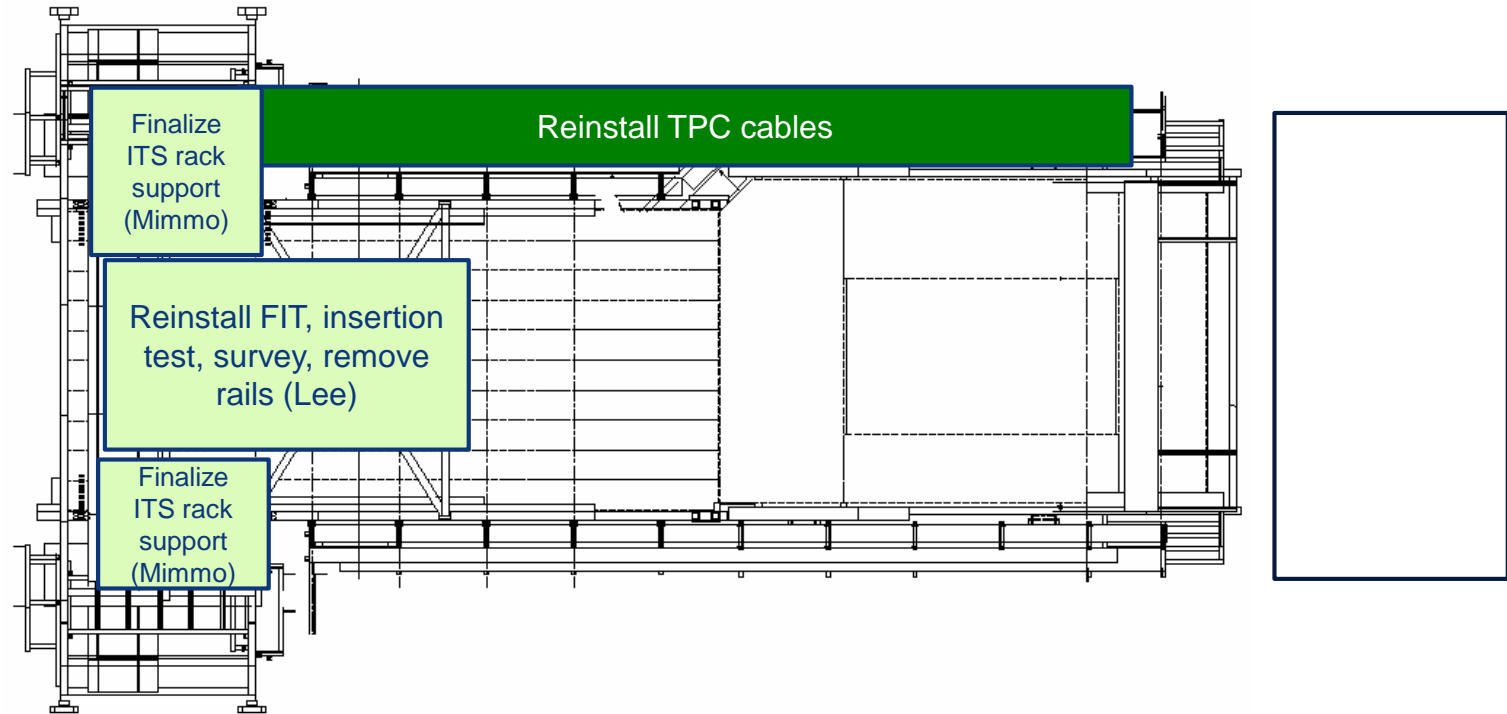
Miniframe activities w42 – Tue 15 Oct 2019



Miniframe activities w42 – Wed 16 Oct 2019



Miniframe activities w42 – Thu 17 Oct 2019



Miniframe activities w42 – Fri 18 Oct 2019

