

Thomas Cartier-Michaud

Fellow in TE-MPE-PE

For 2 years from 01/02/19 to 31/01/21

Supervisor: Andrea Apollonio

Office: 30-5-025

I come from...

- Villeneuve-sur-Lot:
Known for “Pruneaux d’Agen”
- Engineering degree in Applied Mathematics:
INSA Toulouse
one semester in UT at Austin
- PhD in Plasma Physics:
CEA Cadarache



Earlier projects

(Phd and post-doc)

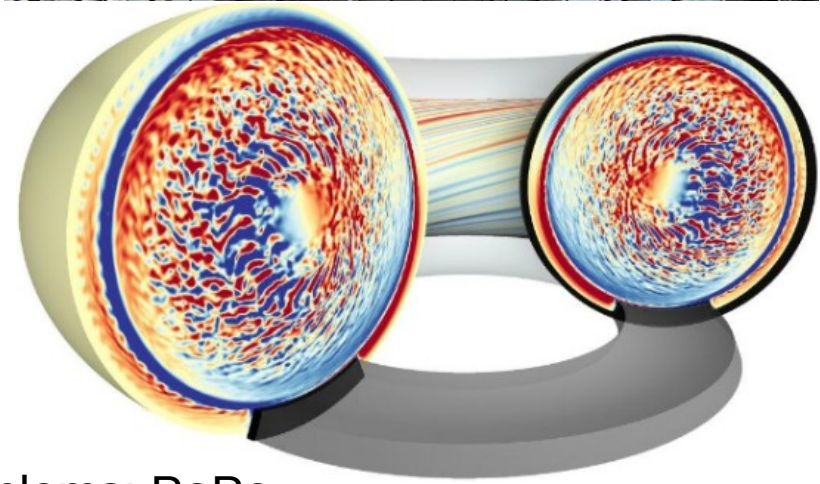
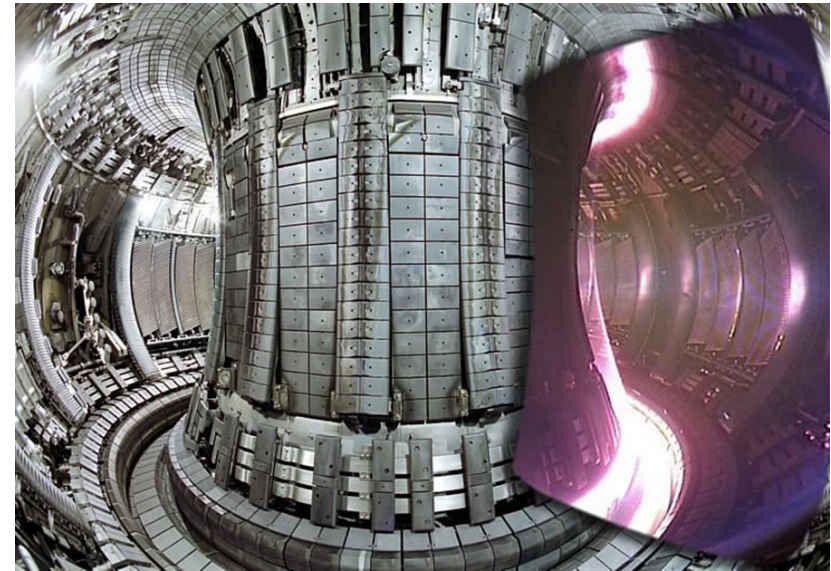
- Kinetic and fluid simulations of fusion plasma

- Turbulent transport:
multi-scale in space (2D to 4D) and time

- High Performance Computing:
100 – 10 000 cores

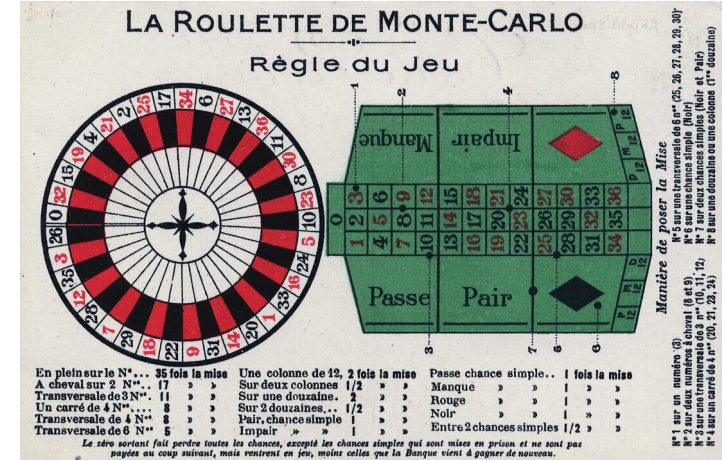
Fortran MPI/OpenMP Matlab Python

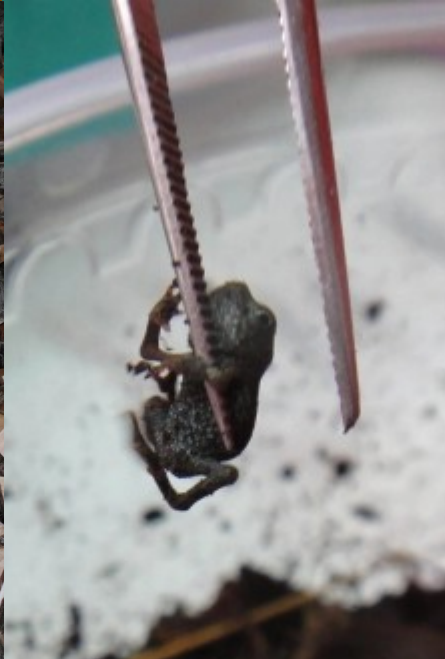
- Code verification and model reduction for PDE problems: PoPe
Recovering **actual** equations of a code from outputs of a simulations



Projects @ CERN

- Availability simulation software for LHC developer / user of Availsim software
Monte Carlo simulations
- Data mining / ML on AFT data
- Quench simulations
- ...





Thank you for your attention :-D