

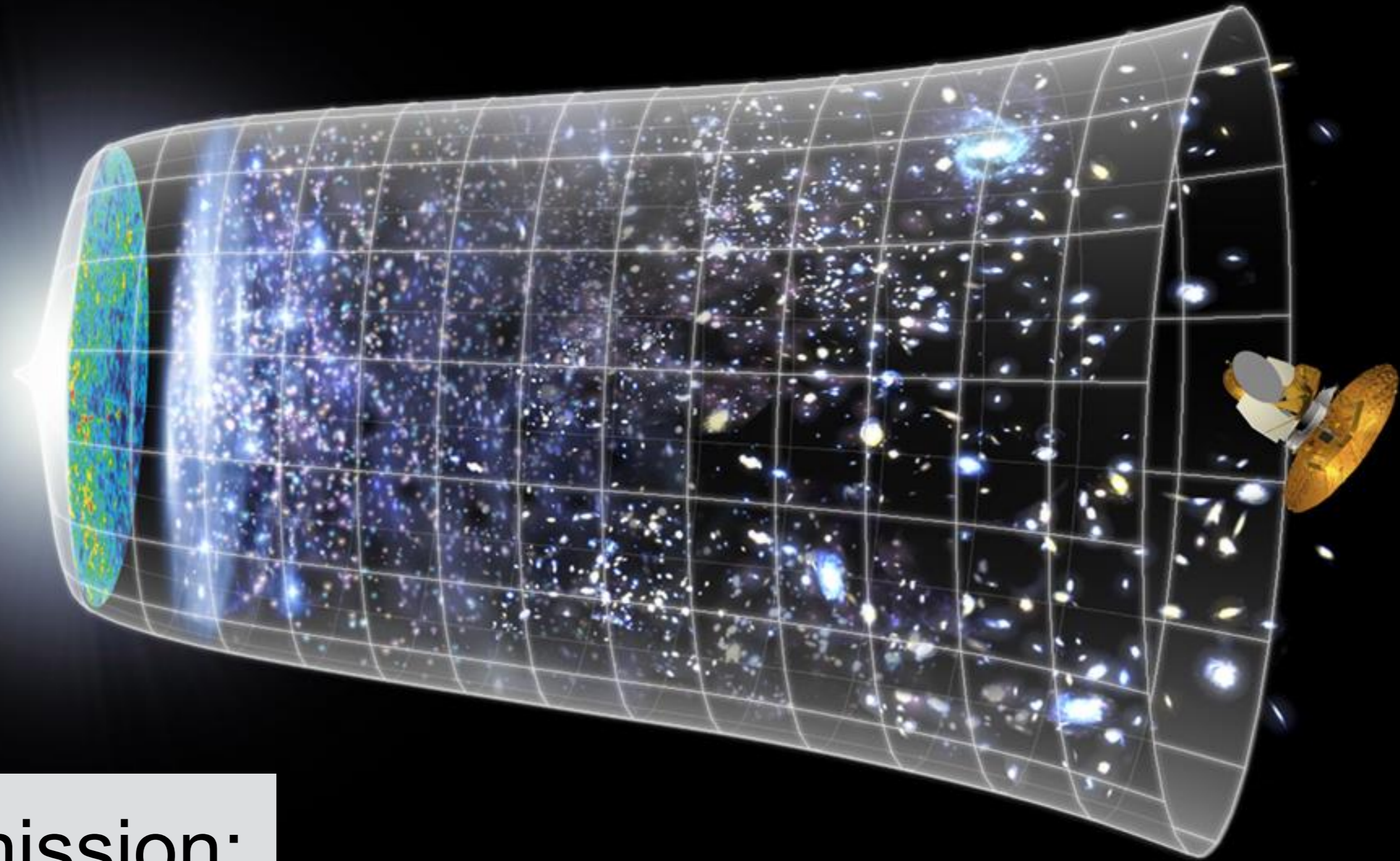
From CERN knowledge to society

Manuela Cirilli

Medical Applications Section Leader

Knowledge Transfer Group





**CERN's mission:
Basic research**



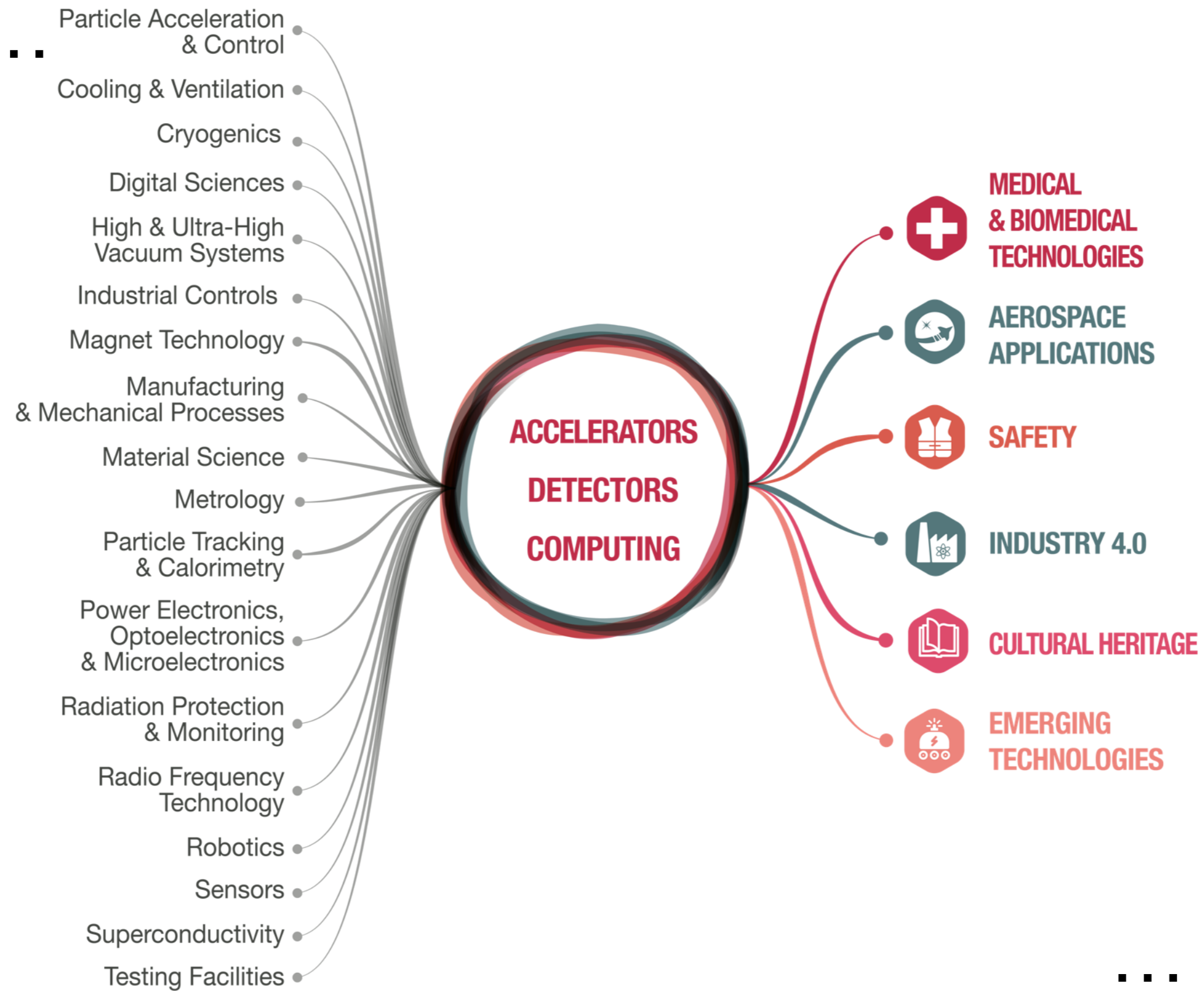
SCIENCE

TECHNOLOGY

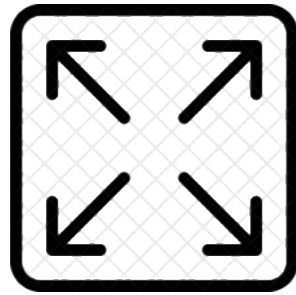
TRAINING

COOPERATION

From CERN Technologies ...



KT Mission



Maximise the technological and knowledge return to society in particular through Member States industry



Promote CERN as a centre of excellence for technology and innovation



Demonstrate the importance and impact of fundamental research investments

Key concepts: Dissemination and Impact

Funding Opportunities for CERN Projects

CERN Knowledge Transfer Fund
CERN Medical Applications Budget

Collaborations and Networks

Knowledge transfer networks
Strengthening links with Member States (KT Forum)
Relations with International Organisations
Knowledge transfer in EC co-funded projects

Open Source

Open Source Software
Open Hardware Licence

Entrepreneurship

Start-ups & Spin-offs
Entrepreneurship Meet-Ups
Business Incubation Centres
Entrepreneurship Programmes

Support for CERN Personnel

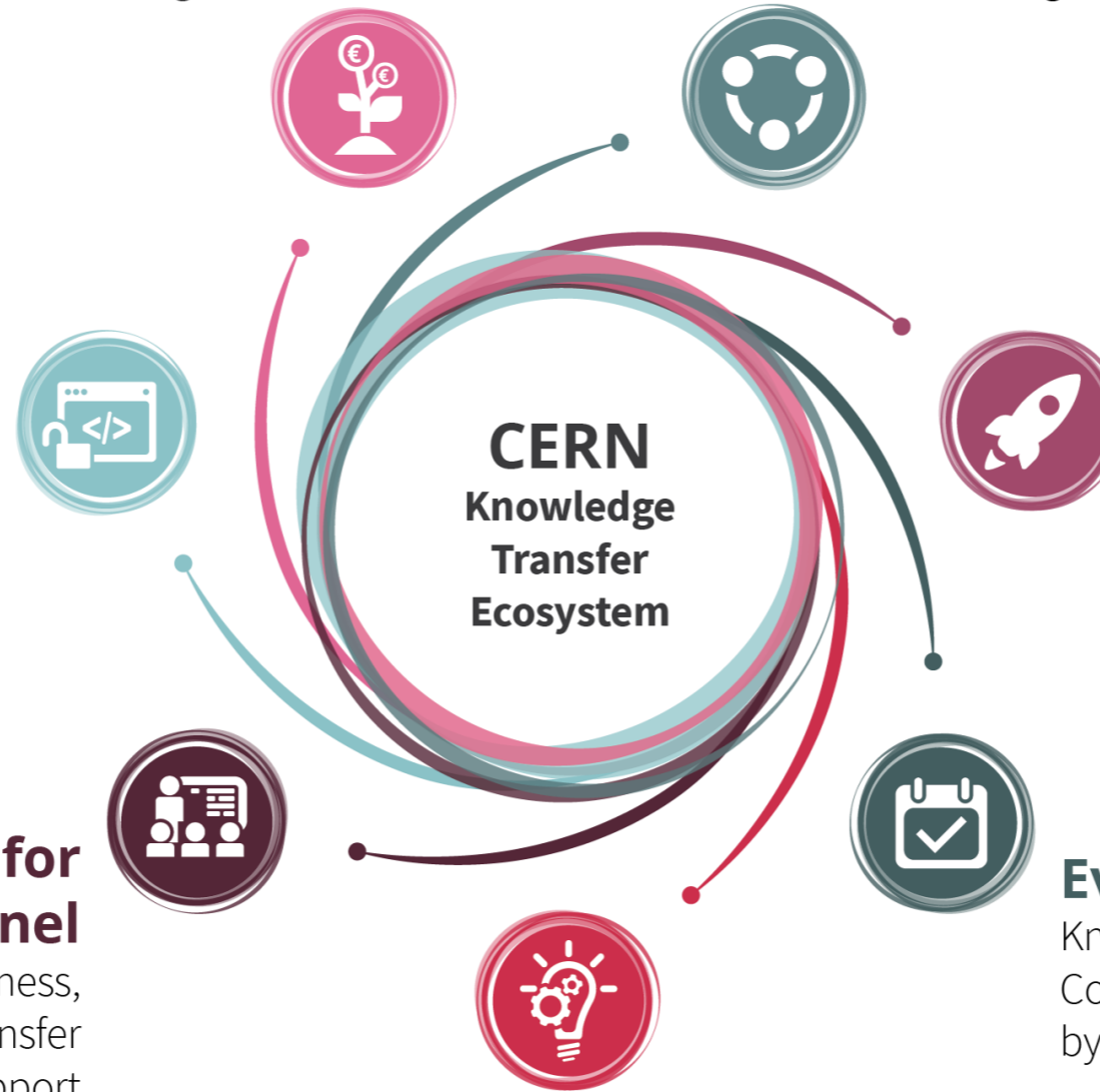
Formal and practical training in business, entrepreneurship & knowledge transfer
Legal, business & intellectual property support

Events

Knowledge Transfer Seminars
Conferences with a significant contribution by the Knowledge Transfer group

Intellectual Property Management

R&D collaborations
Patent portfolio
Licence, service & consultancy agreements



Building a culture of entrepreneurship



2018:
first CERN Entrepreneurship
Student Programme (CESP)
completed

2019:
Closing this week!

The background consists of several overlapping, crumpled pieces of brightly colored paper in shades of yellow, green, orange, blue, purple, and pink. Each piece of paper has a large, hand-drawn black question mark on it. The papers are layered, with some appearing more prominent than others, creating a sense of depth and texture.

Want to know more?

Visit <http://kt.cern>

**Sign-up to our newsletter
<http://kt.cern/newsletter>**

Contact us at kt@cern.ch

Manuela.Cirilli@cern.ch