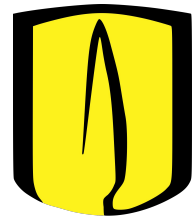


Caracterización de supercúmulos en simulaciones cosmológicas

CoCo 2019 : Cosmología en Colombia

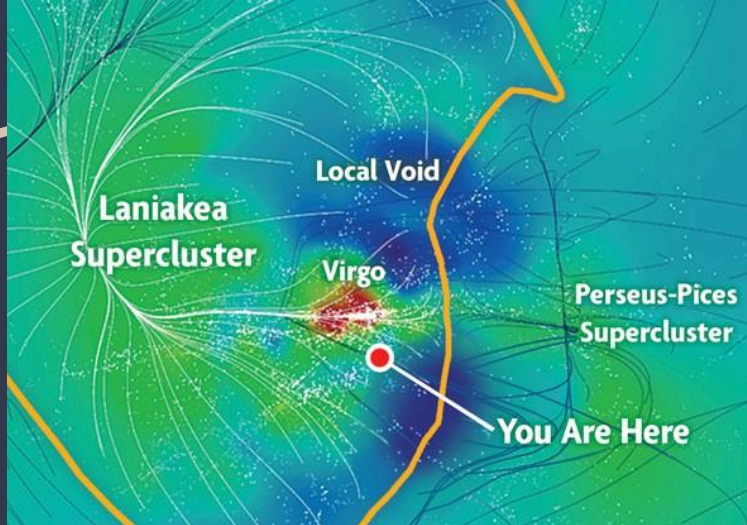
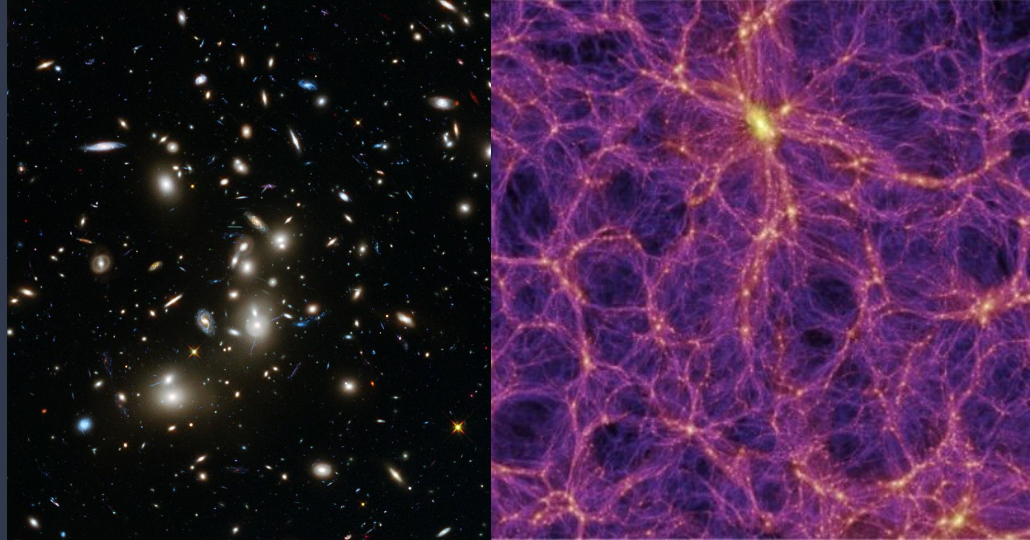


David L. Paipa
Jaime Forero-romero

30 de Mayo , 2019

Introducción

- (1932) Shapley & Ames
- 1249 Galaxias (Cúmulos)
- Estructuras cosmológicas
- Supercúmulos
- Supercúmulo local
- fluctuaciones primordiales
- Simulaciones de N-cuerpos con tiempo para evolucionar.

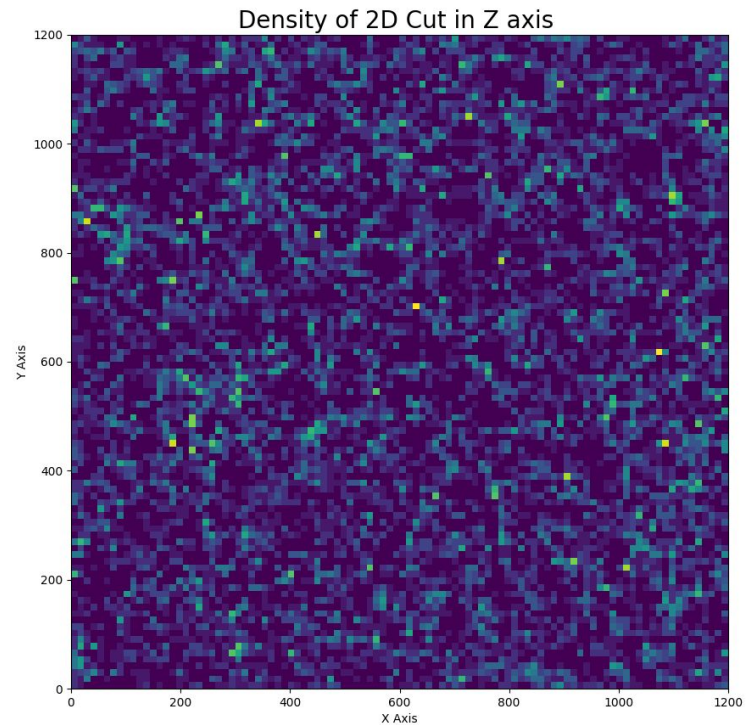


Análisis inicial

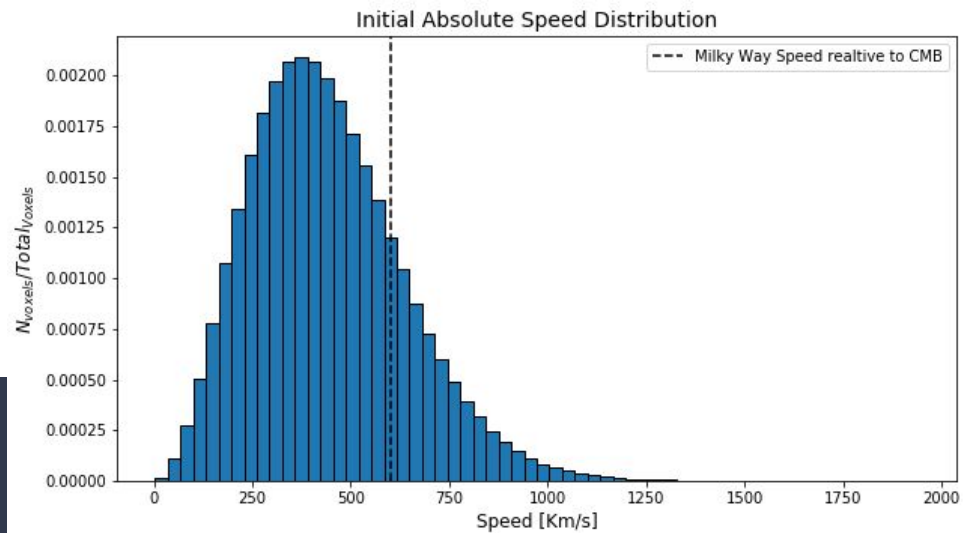
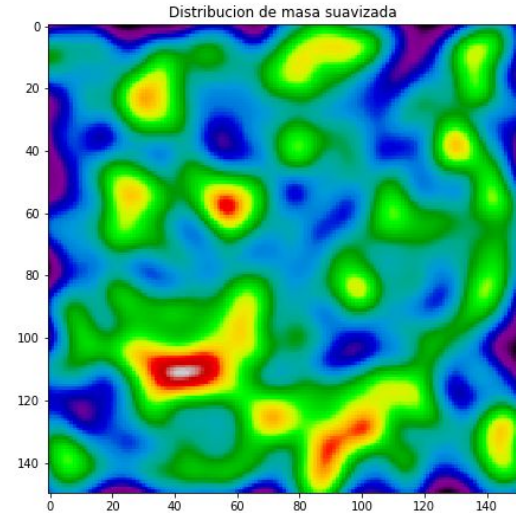
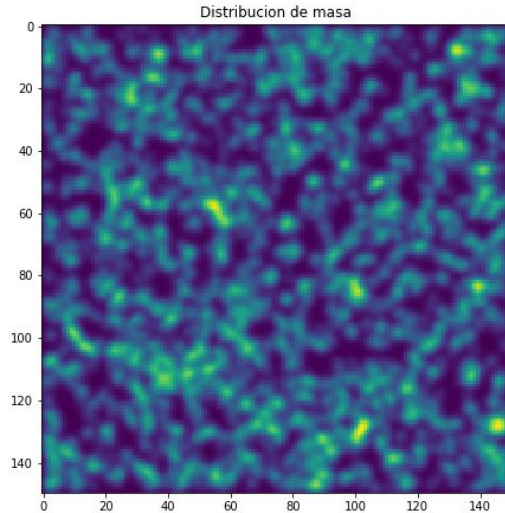
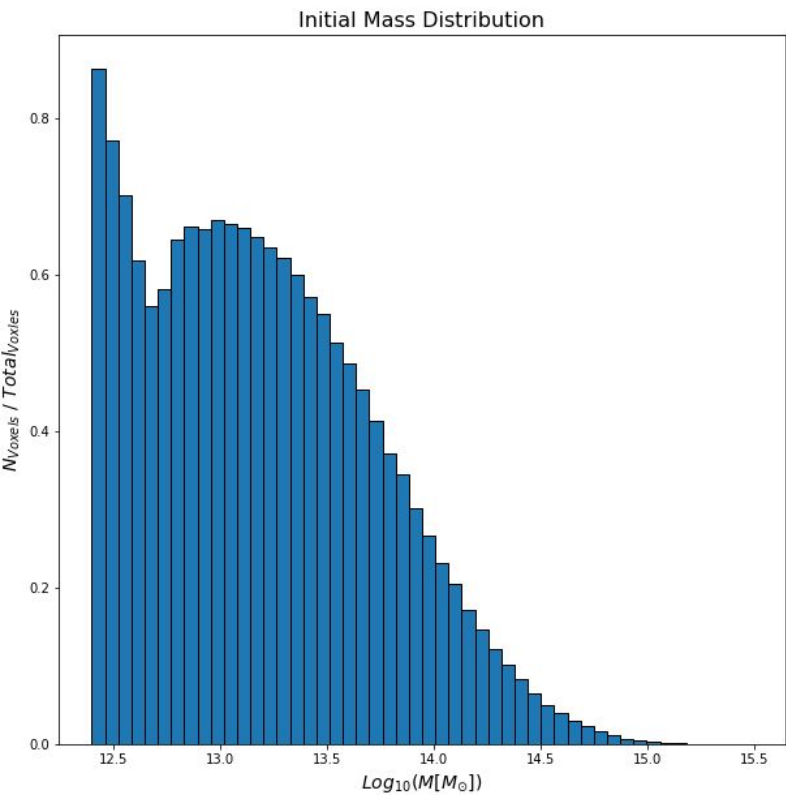
Análisis inicial

Condiciones iniciales

- Hay $\sim 2 \times 10^6$ Halos en un volumen de $\sim 1.73 \times 10^9 \text{ Mpc}/h^3$
- Se tiene $[x, y, z], [V_x, V_y, V_z], [M_{\text{bound}}]$.
- Se divide el espacio en una grilla
- *Simulaciones de N-cuerpos acceso público.*



SUAVIZADO GAUSSIANO



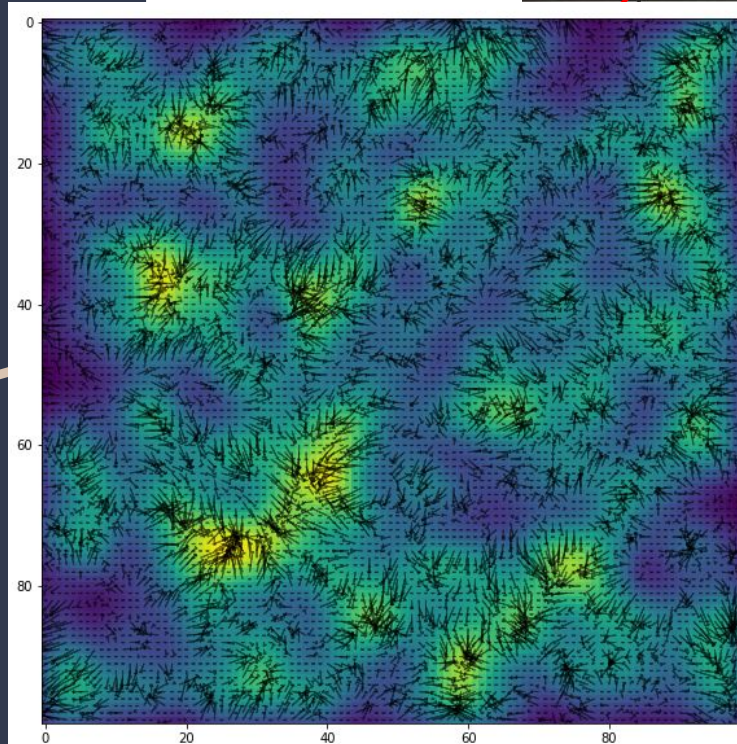
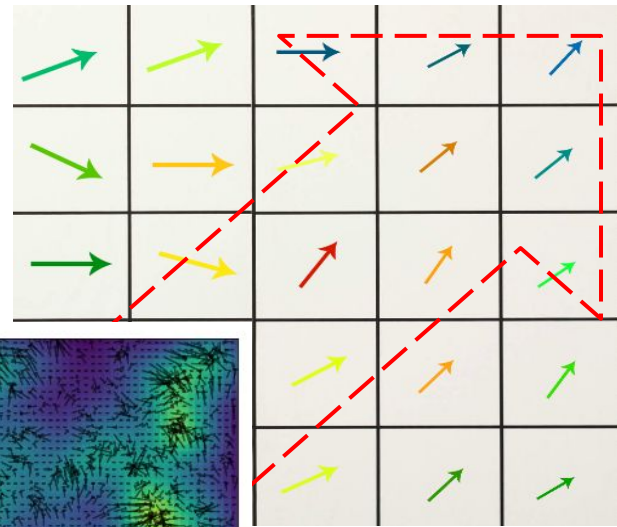
Análisis inicial

Flujo de velocidad

construyendo el VDC

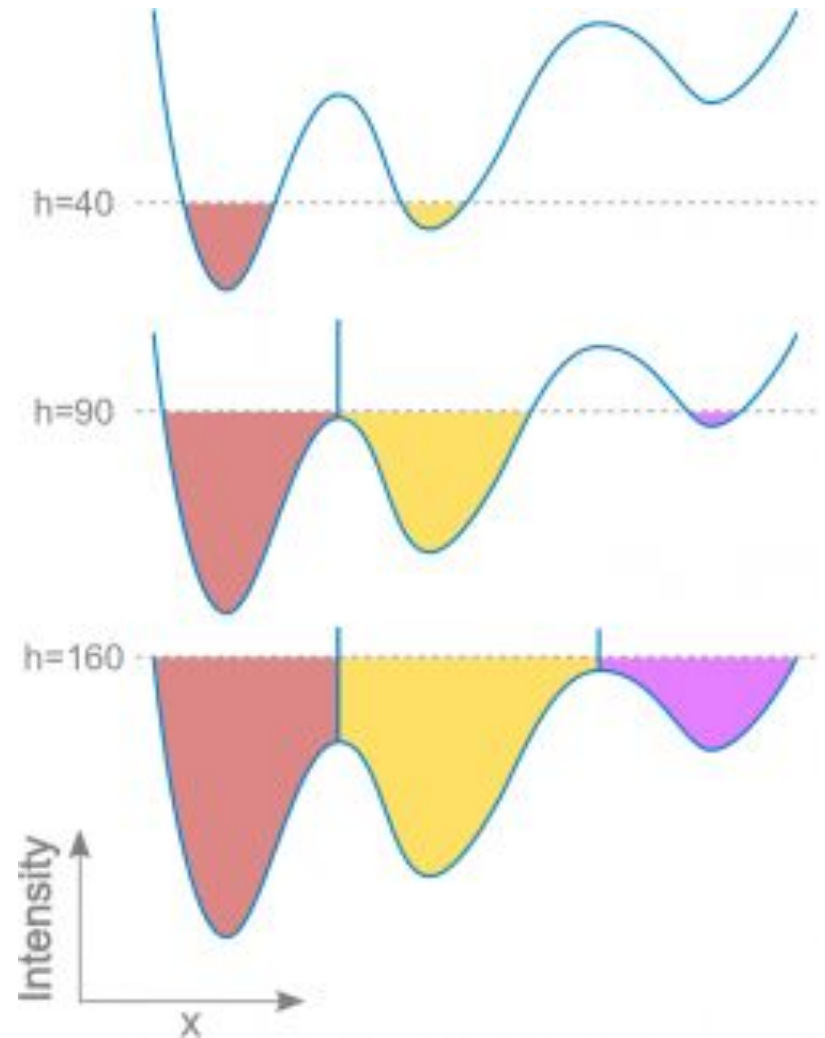
- Se consigue una grilla 3D de velocidades para cada dimensión de movimiento (x, y, z)
- Se quieren caracterizar supercúmulos por su acreción.
- Características de **GRUPO**.

$$\nabla \cdot \vec{V}$$

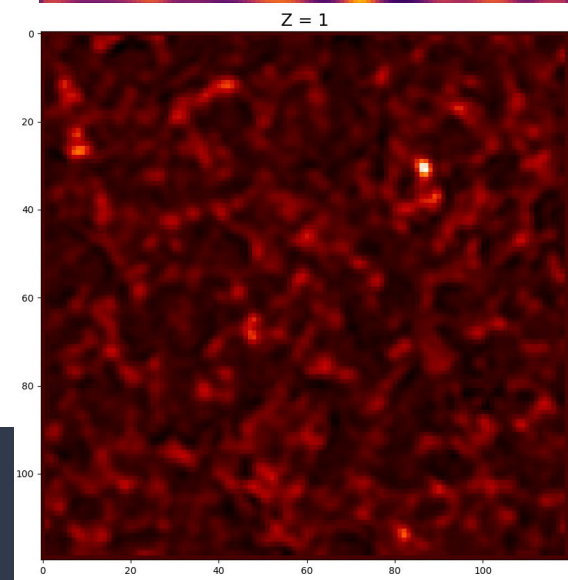
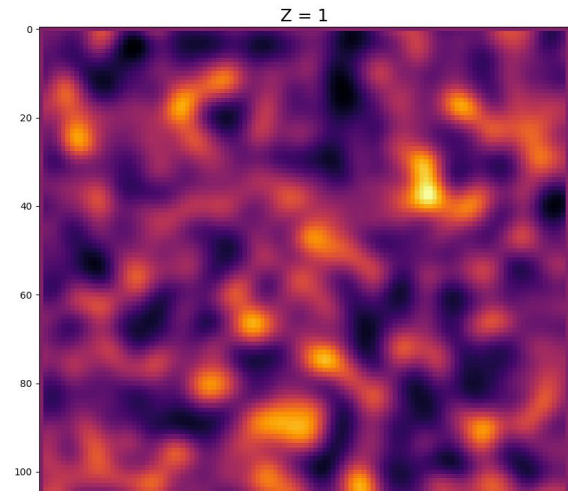
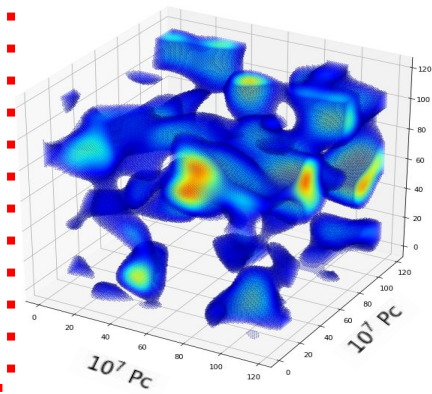
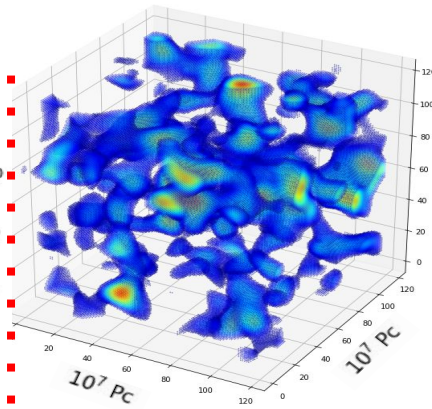
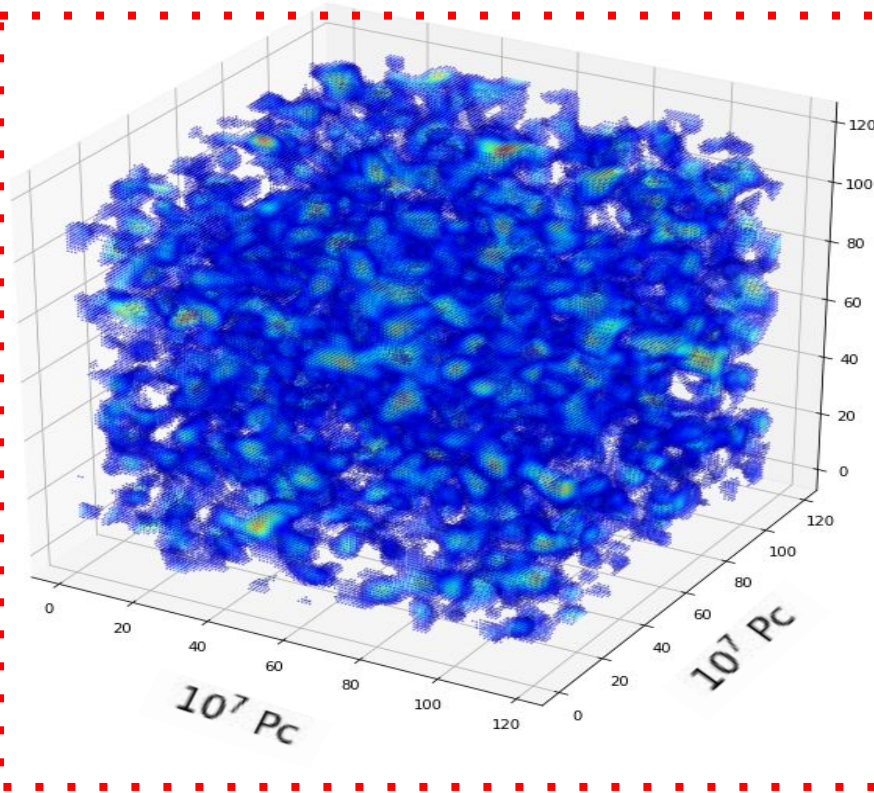


Caracterización *Watershed*

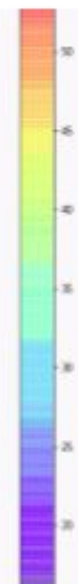
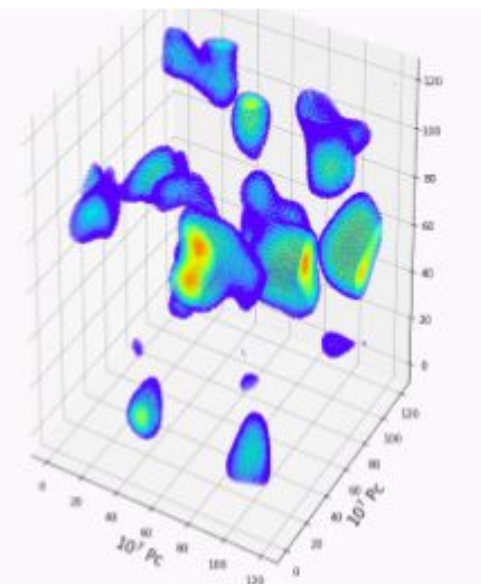
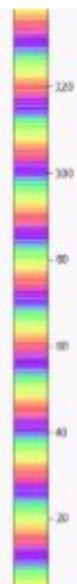
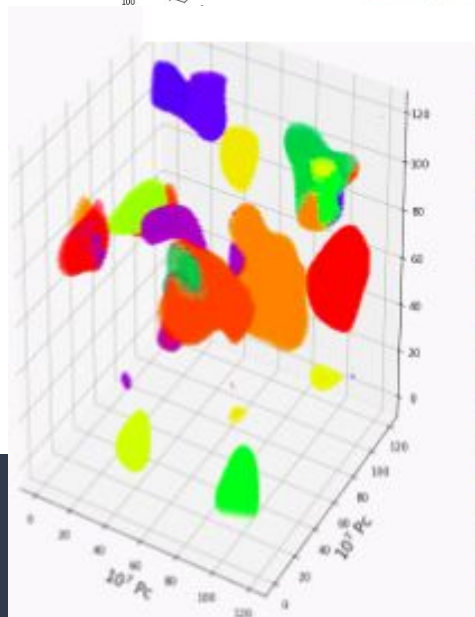
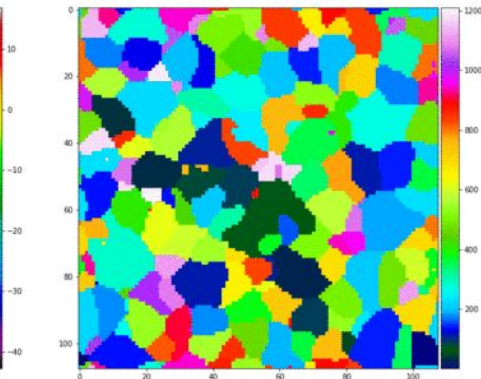
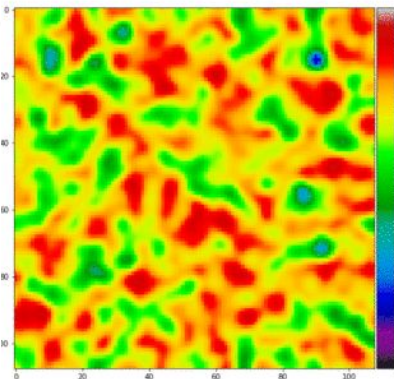
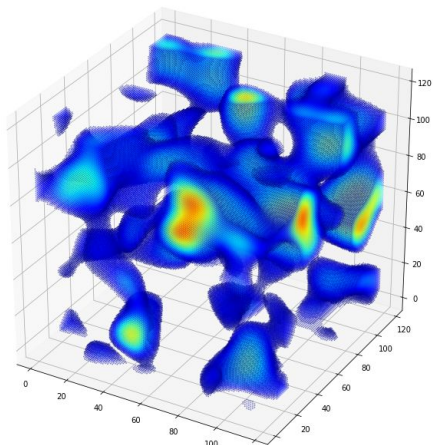
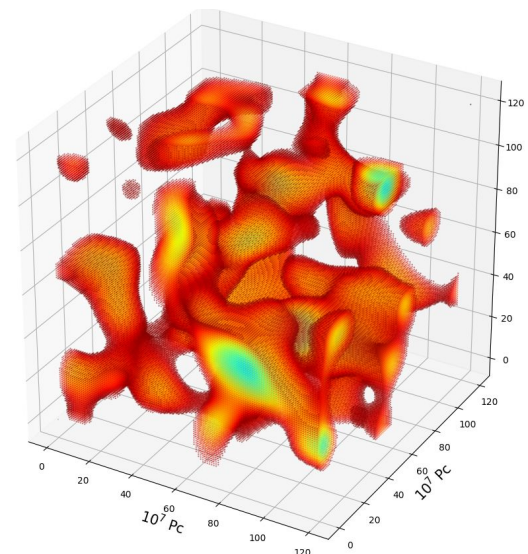
- Recorrido sobre el campo escalar VDC de forma **ascendente o descendente**
- **Segmentación** de grupos por “pozos de potencial” en el campo escalar de VDC.



Resultados

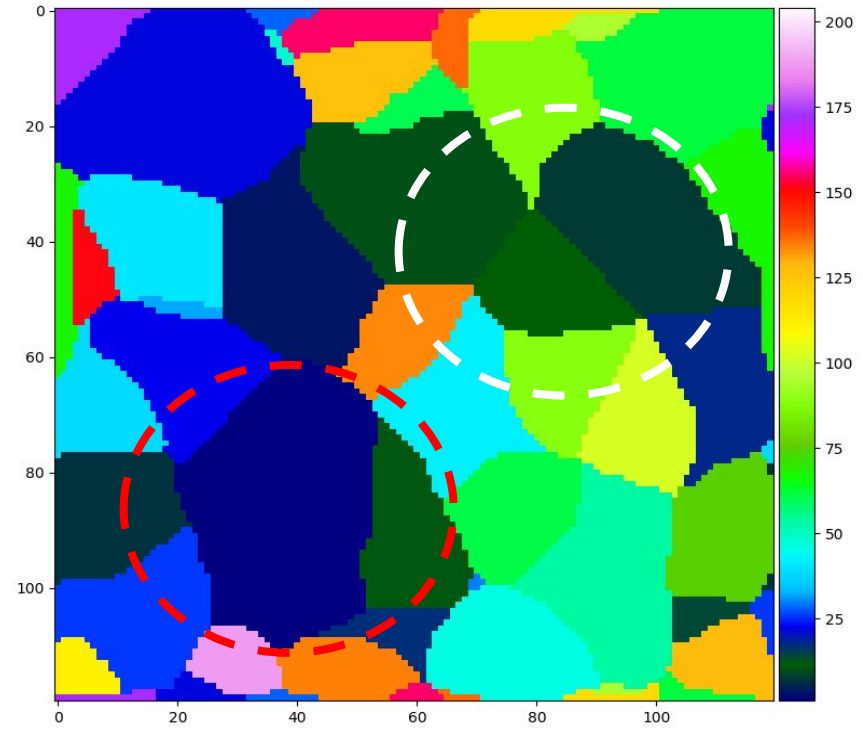
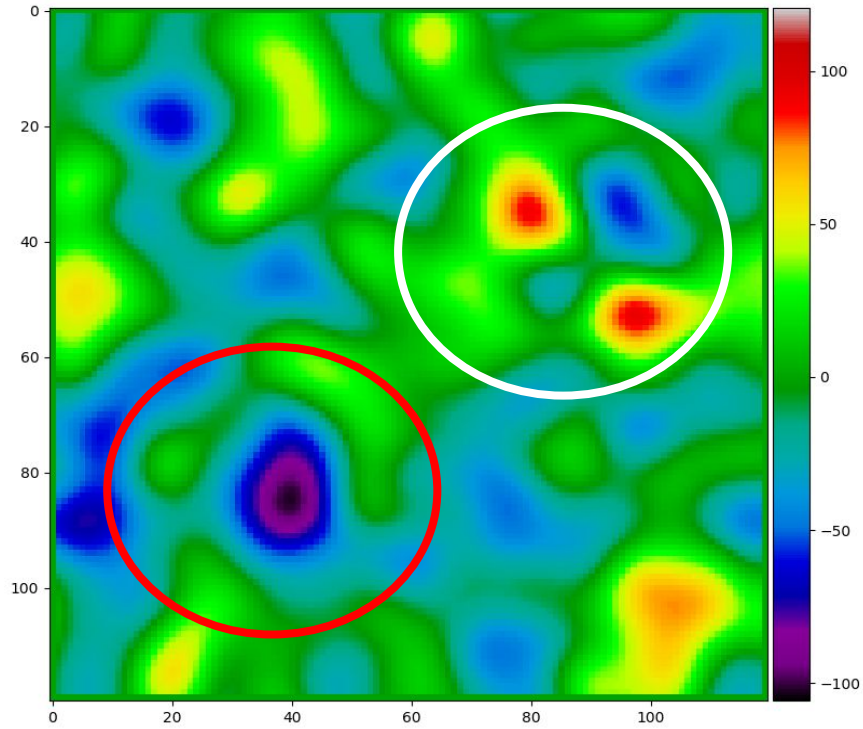


Resultados



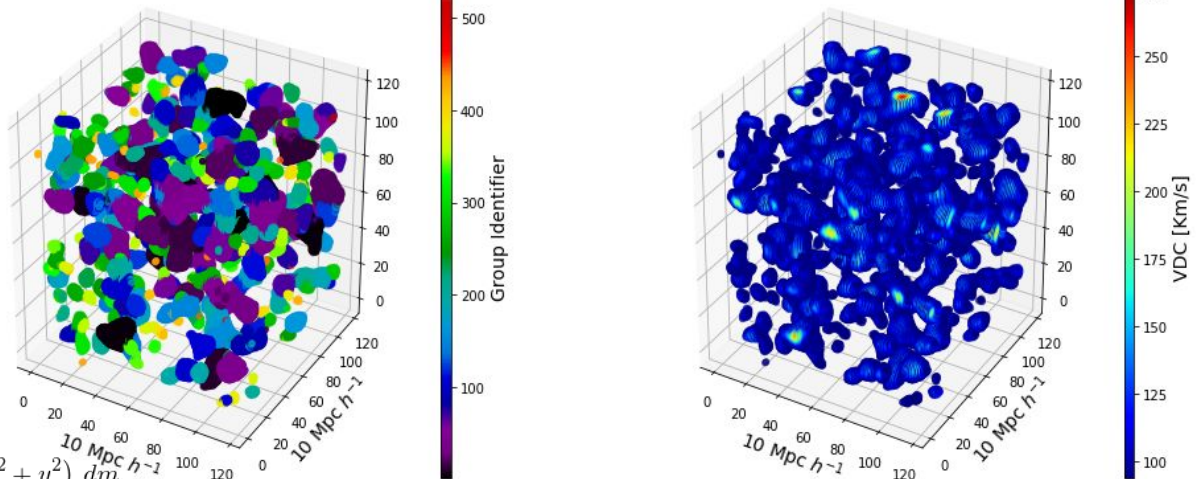
Resultados

$Z = 45/120$



Resultados

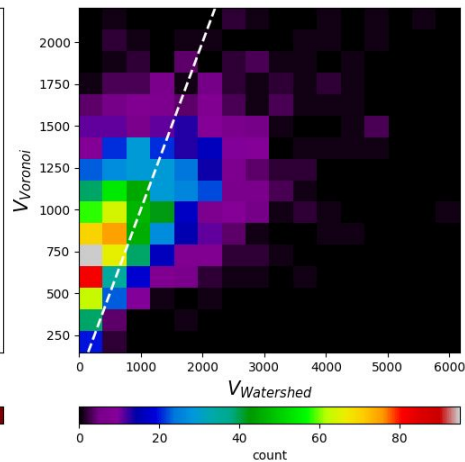
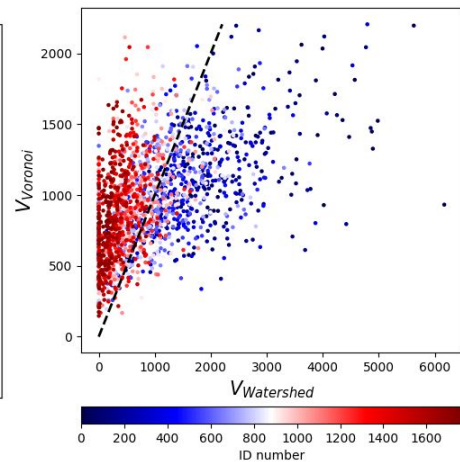
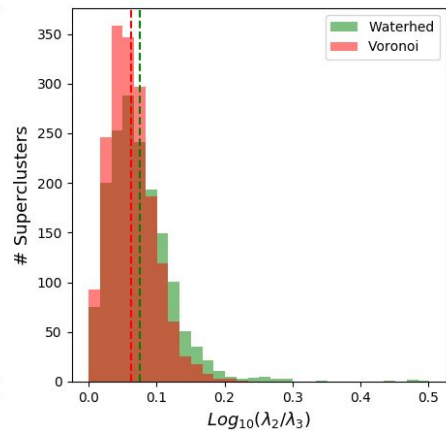
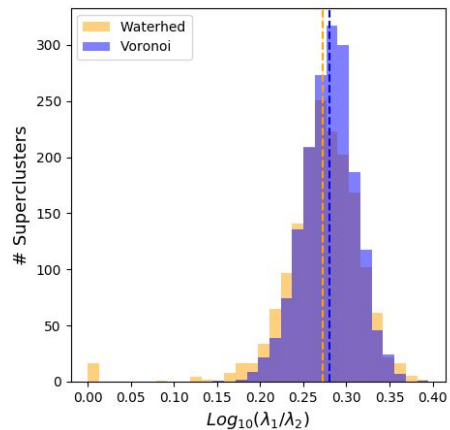
Resultados

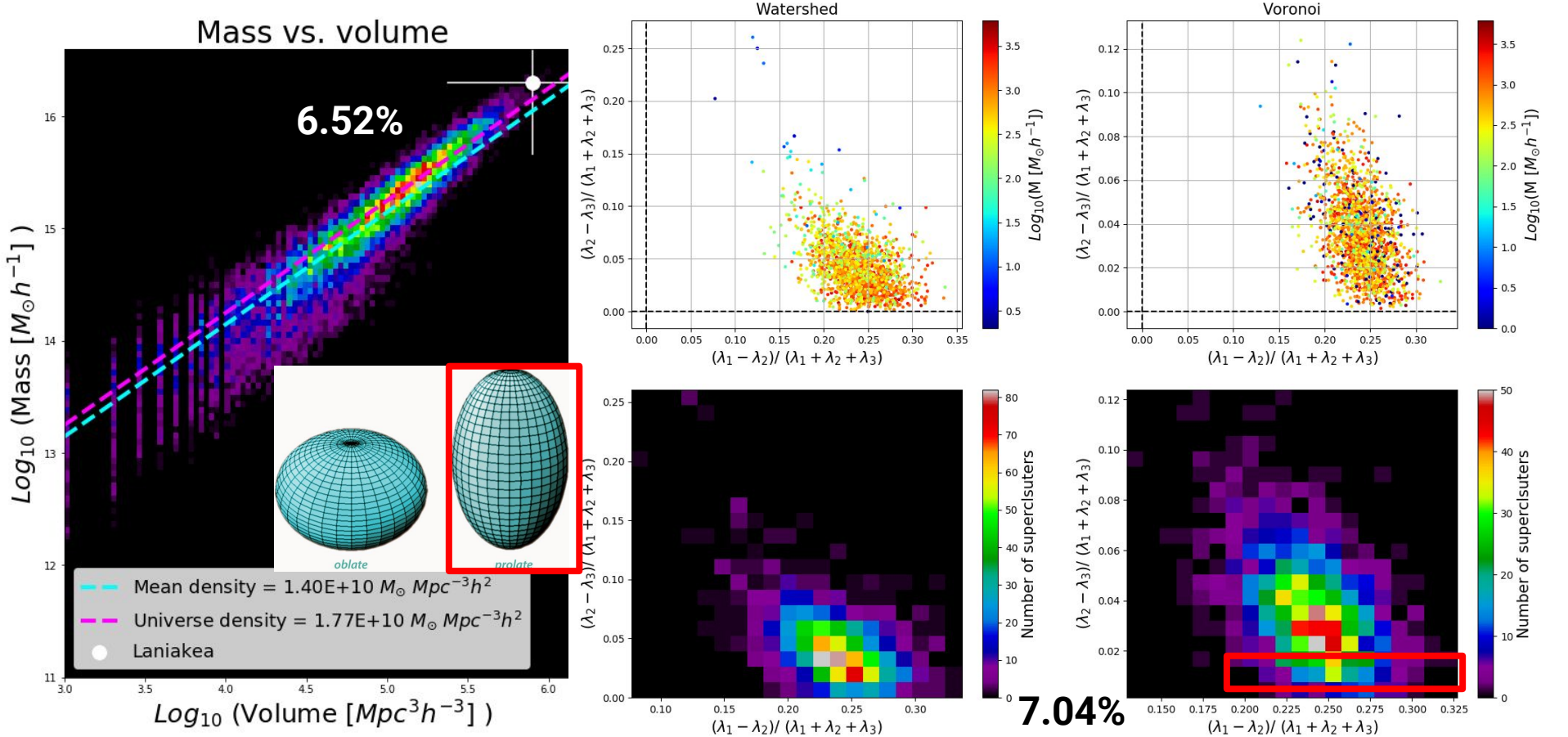


$$\mathbf{I} = \begin{bmatrix} I_{xx} & I_{xy} & I_{xz} \\ I_{yz} & I_{yy} & I_{yz} \\ I_{zx} & I_{zy} & I_{zz} \end{bmatrix}$$

$$I_{xx} = \int_m (y^2 + z^2) dm, \quad I_{yy} = \int_m (x^2 + z^2) dm, \quad I_{zz} = \int_m (x^2 + y^2) dm,$$

$$I_{xy} = I_{yx} = \int_m xy dm, \quad I_{xz} = I_{zx} = \int_m xz dm, \quad I_{yz} = I_{zy} = \int_m yz dm$$





Resultados

GRACIAS !

Referencias

- Beucher S., Lantuejoul C., 1979, in *Proceedings International Workshop on Image Processing*, CCETT/IRISA, Rennes, France
- Beucher S., Meyer F., 1993, *Mathematical Morphology in Image Processing*, ed. M. Dekker, New York, Ch. 12, 433
- Bharadwaj, S., Sahni, V., Sathyaprakash, B. S., Shandarin, S. F., & Yess, C. 2000, *ApJ*, 528, 21
- Beucher S., *THE WATERSHED TRANSFORMATION APPLIED TO IMAGE SEGMENTATION*, France
- Novikov, D., Colombi, S., & Doré, O. 2006, *MNRAS*, 366, 1201
- Sousbie T., et. al, *The fully connected N dimensional Skeleton: probing the evolution of the cosmic web* 2018
- Sousbie T., *The persistent cosmic web and its filamentary structure I: Theory and implementation*, 2010