

Tips and tricks (8): Frequent asked questions

CAD services

Index

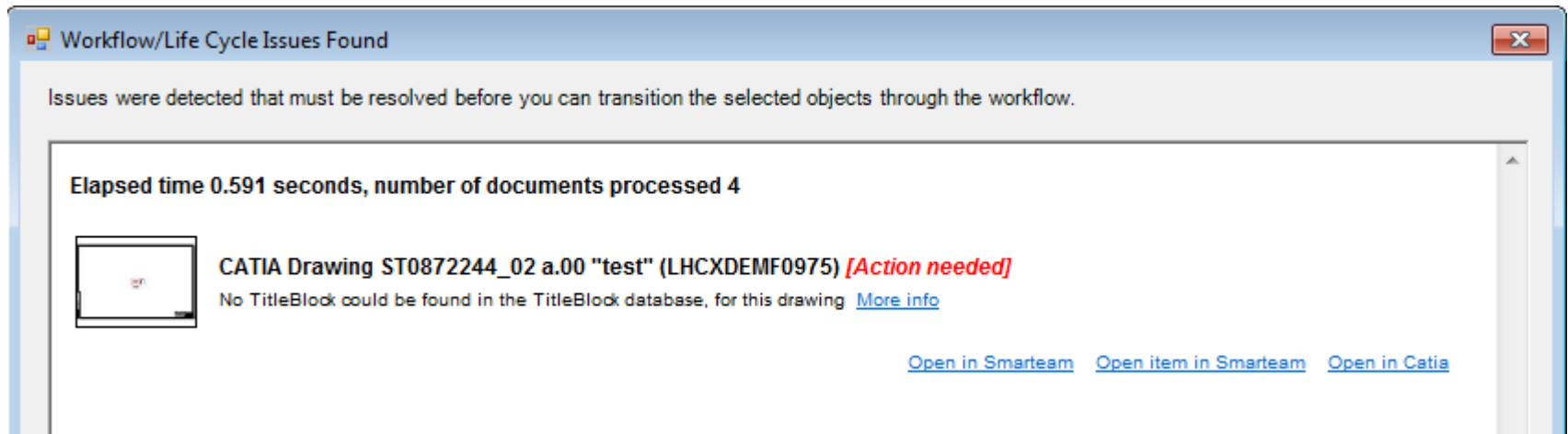
- New checks for RFC
- BOM compare command
- TEAMs - Who can add me?
- Open multi update
- Unresolved Constraints
- CATIA thread non common
- TBE problems with French configuration
- Design tables in SmarTeam
- Statistics for a group of documents in SmarTeam

Do you know the new checks of ready for check?

Check if the title block was correctly generated

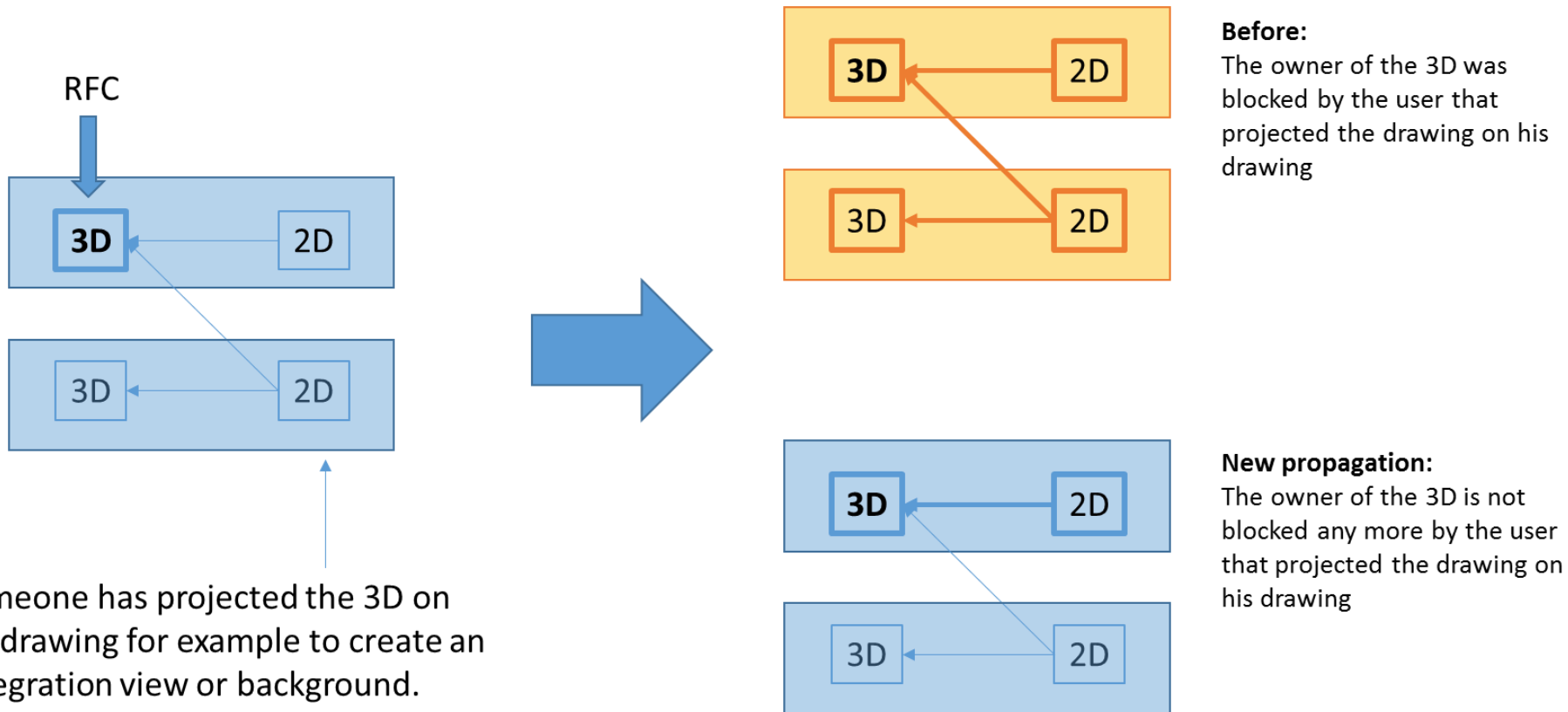
Why?

To avoid archiving problems since with the new lifecycle removing the controls is heavier as before.



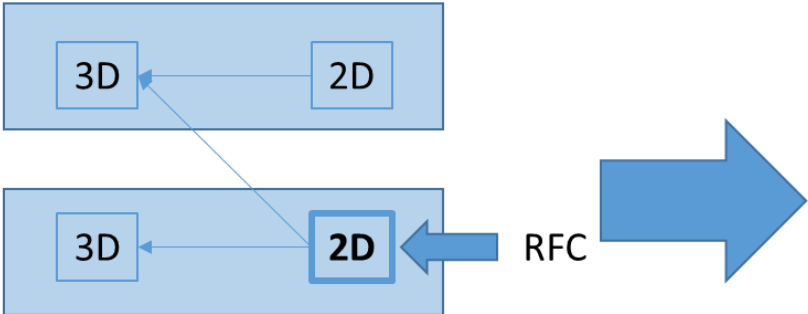
Do you know the new checks of ready for check?

New propagation between the Items <https://edms.cern.ch/document/2029954/1>

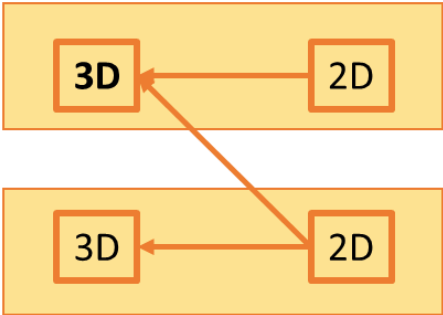


Do you know the new checks of ready for check?

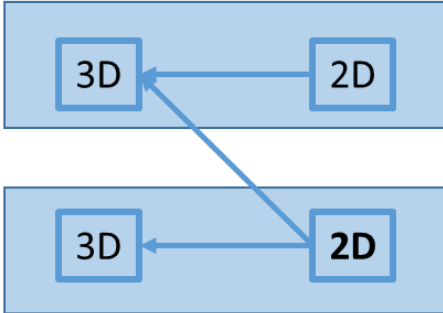
If the link is needed.....



Someone has projected the 3D on his drawing for example to create an integration or background.



Before:
When it is required by the document the propagation is done



New propagation:
Still when it is required by the document the propagation is done

BOM compare command

Where is the command BOM Compare?

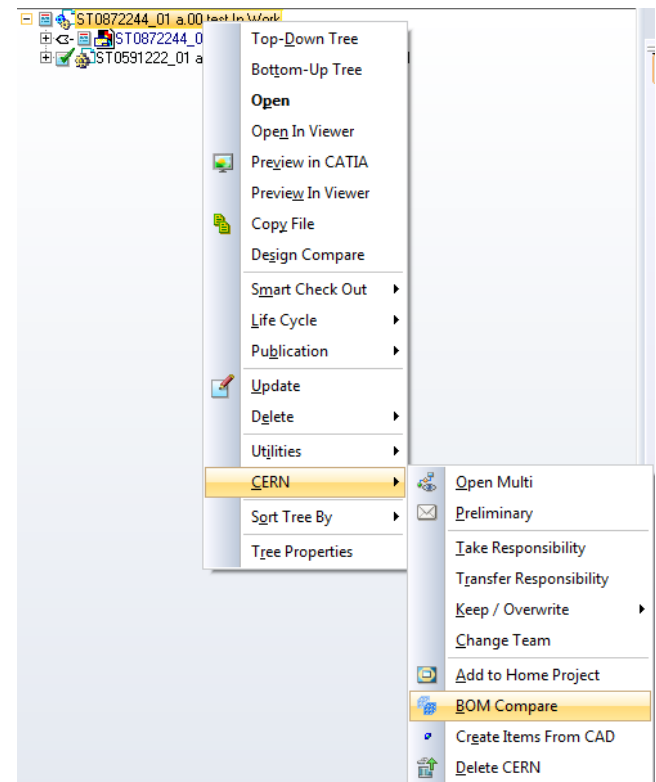
This command is available only from the 3D

Why?

BOM compare creates ITEM structures based on CAD structures.

From the ITEM

It may not be unique
(Several 3D structures)

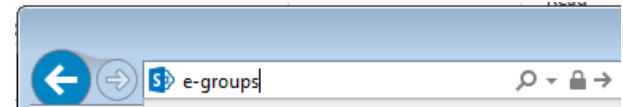


TEAMS who can add me?

CAD Support don't have rights to add people to a TEAM

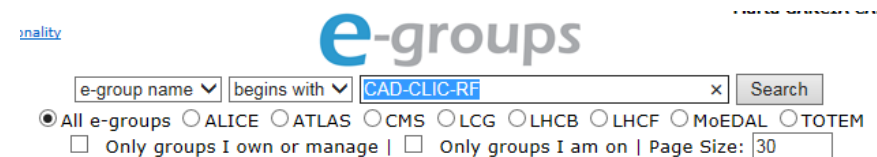
Go to the e-groups web

Tip: "e-groups" in the browser is enough



Search the e-group

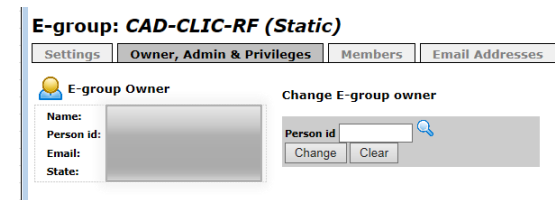
Tip: Paste the TEAM in the search field



Check who is the manager

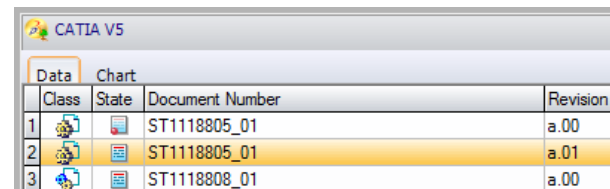
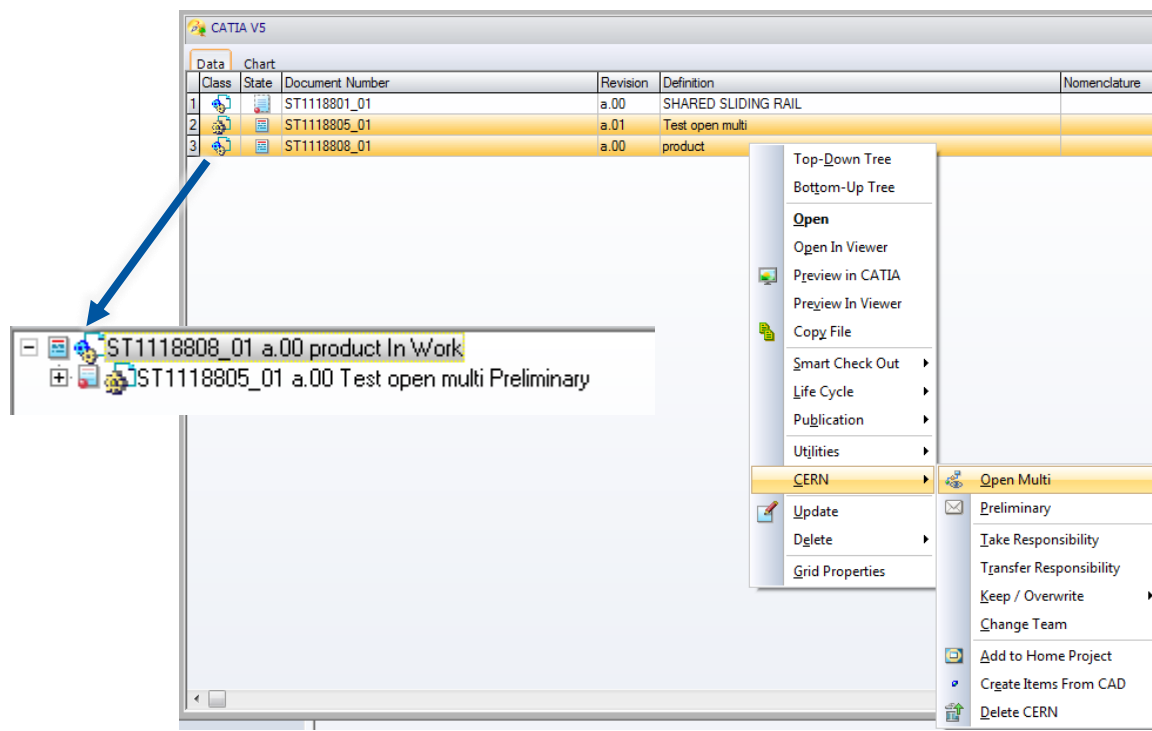
Tip: This is the person that can add you

24 hours later automatically you will have all the rights



Open multi update

Open Multi in case of revision conflicts will take the latest revision of the documents



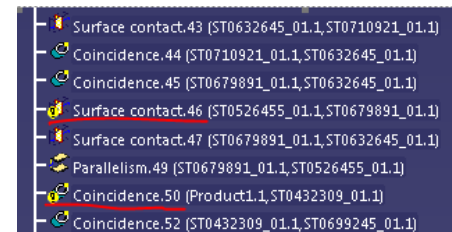
Unresolved Constraints

Frequent request

By opening the assembly some constraints seems to be unresolved
After updating the constraints everything looks ok
Next opening I have the same problem

Could be a problem related to need of a CATDUA, distance to the origin,.....

But first, witch CATIA configuration are you using?



Why?

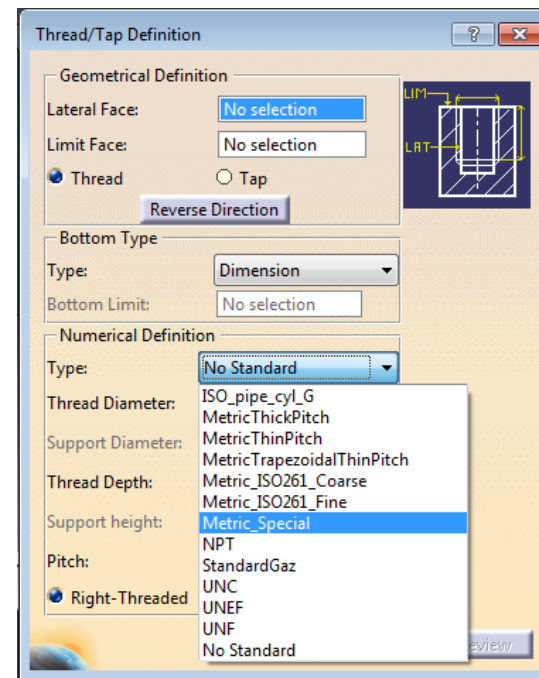
Large assemblies, uses CRGs so some constraints may look like unresolved until you load the document in design mode

CATIA thread non common

CATIA thread standards contains the recommended ones

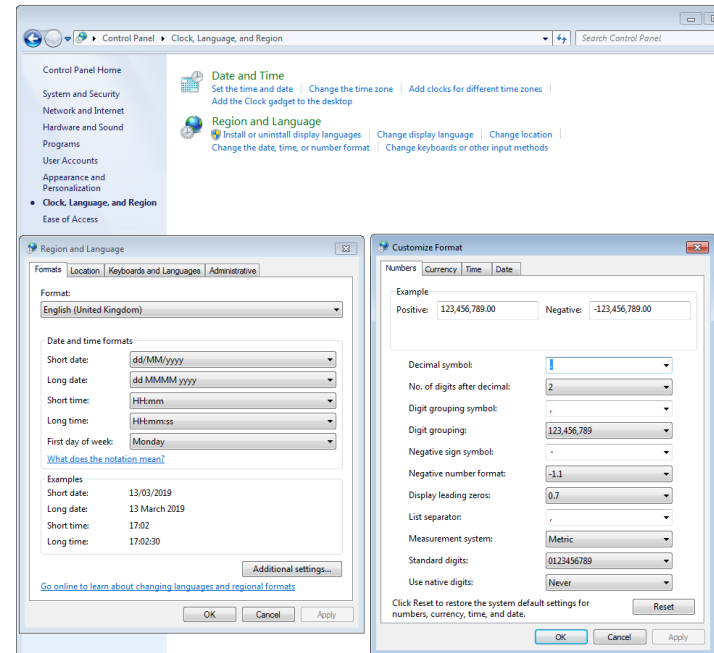
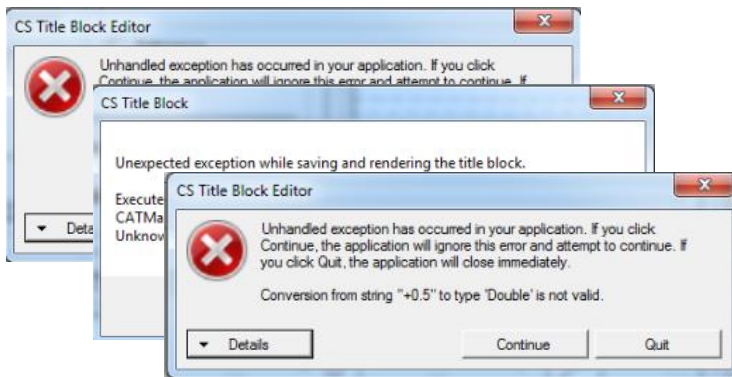
New standard created for non common ones: **“Metric_Special”**

Request to Catalog managers



TBE problems with French configuration

Error messages by using the title block editor



Language is French?

The decimal symbol should be changed from , to .

Design tables in SmarTeam

Saving one part with a design table the link to the table is not recognized.

Workaround:

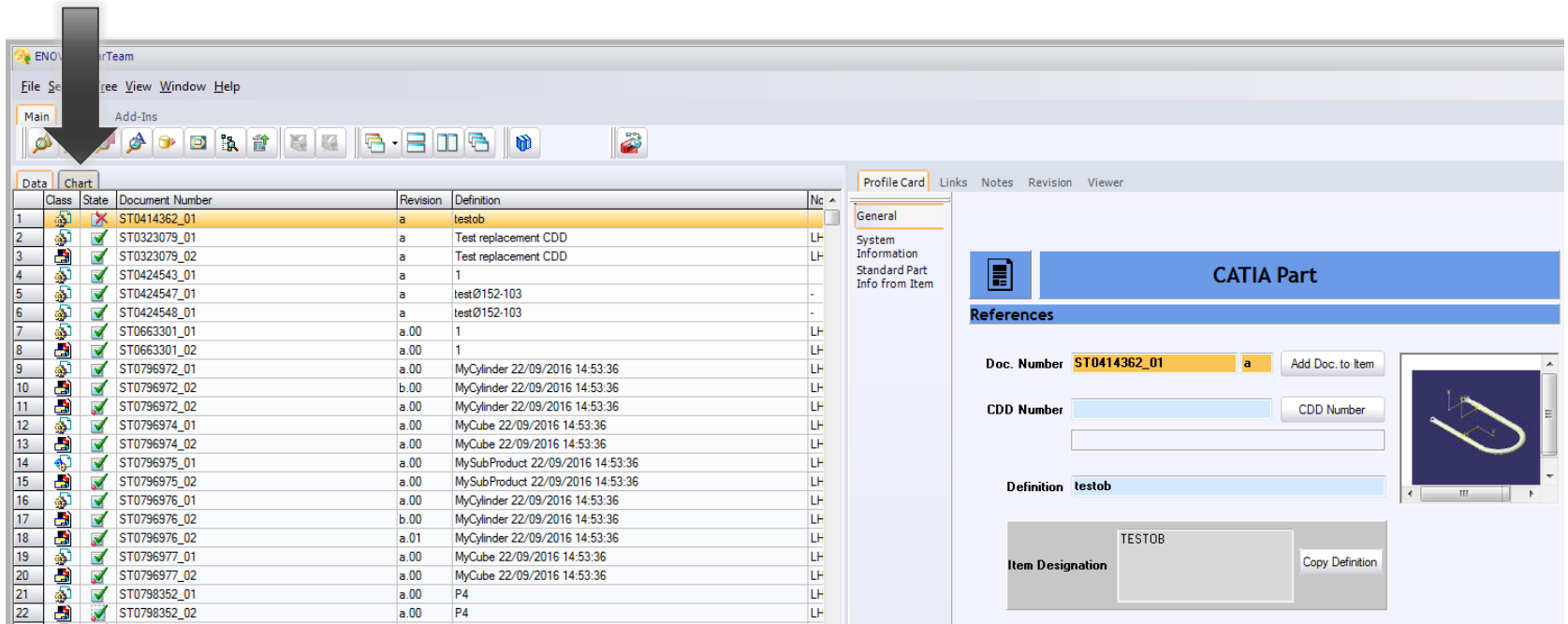
The design table has to be saved in .xls format not in .xlsx

How to use and save design tables:

https://edms.cern.ch/ui/file/1524179/LAST_RELEASED/1524179.pdf

Statistics for a group of documents in SmarTeam

Put the documents in grid form and in separate view (Left window)
Click in Chart

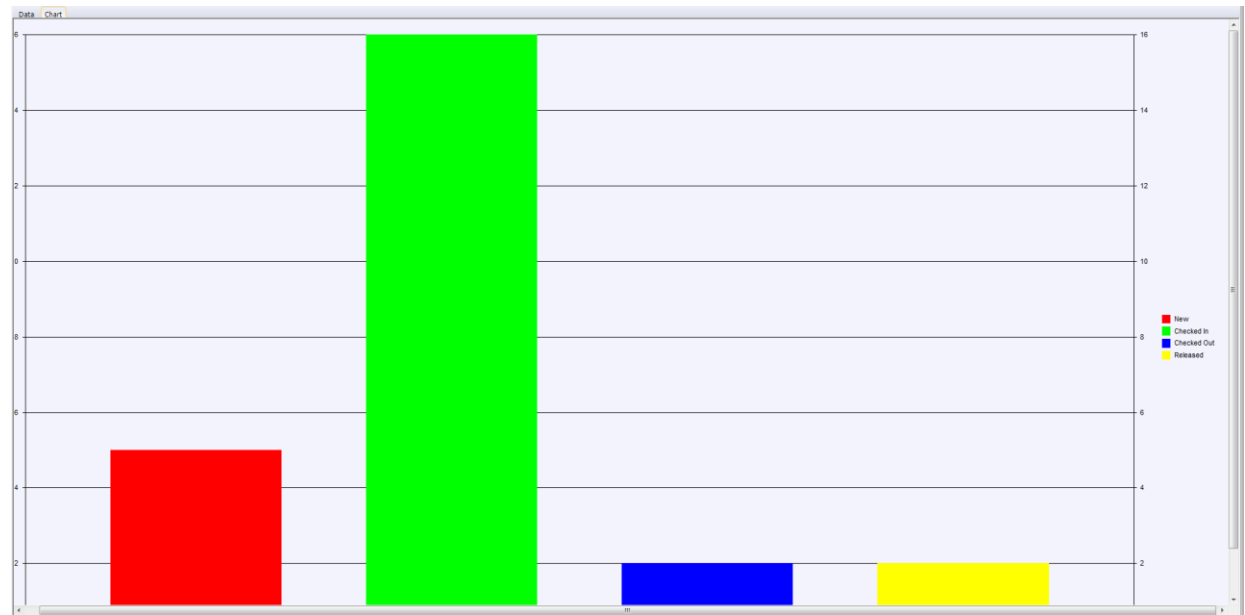
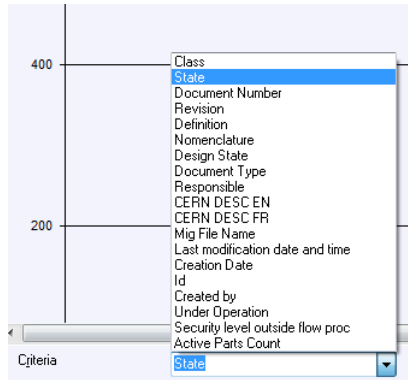


The screenshot displays the SmarTeam interface. On the left, a grid view shows a list of documents with columns for Class, State, Document Number, Revision, Definition, and Name. A large black arrow points to the 'Chart' tab in the grid's header. On the right, the 'Profile Card' for a 'CATIA Part' is visible, showing fields for Doc. Number (ST0414362_01), CDD Number, Definition (testob), and Item Designation (TESTOB). A small 3D model of a U-shaped part is shown in a preview window on the right side of the profile card.

Class	State	Document Number	Revision	Definition	Name
	✗	ST0414362_01	a	testob	
	✓	ST0323079_01	a	Test replacement CDD	LH
	✓	ST0323079_02	a	Test replacement CDD	LH
	✓	ST0424543_01	a	1	
	✓	ST0424547_01	a	testØ152-103	-
	✓	ST0424548_01	a	testØ152-103	-
	✓	ST0663301_01	a.00	1	LH
	✓	ST0663301_02	a.00	1	LH
	✓	ST0796972_01	a.00	MyCylinder 22/09/2016 14:53:36	LH
	✓	ST0796972_02	b.00	MyCylinder 22/09/2016 14:53:36	LH
	✓	ST0796972_02	a.00	MyCylinder 22/09/2016 14:53:36	LH
	✓	ST0796974_01	a.00	MyCube 22/09/2016 14:53:36	LH
	✓	ST0796974_02	a.00	MyCube 22/09/2016 14:53:36	LH
	✓	ST0796975_01	a.00	MySubProduct 22/09/2016 14:53:36	LH
	✓	ST0796975_02	a.00	MySubProduct 22/09/2016 14:53:36	LH
	✓	ST0796976_01	a.00	MyCylinder 22/09/2016 14:53:36	LH
	✓	ST0796976_02	b.00	MyCylinder 22/09/2016 14:53:36	LH
	✓	ST0796976_02	a.01	MyCylinder 22/09/2016 14:53:36	LH
	✓	ST0796977_01	a.00	MyCube 22/09/2016 14:53:36	LH
	✓	ST0796977_02	a.00	MyCube 22/09/2016 14:53:36	LH
	✓	ST0798352_01	a.00	P4	LH
	✓	ST0798352_02	a.00	P4	LH

Statistics for a group of documents in SmarTeam

Select the criteria



You will get the results in a column chart

Thank you!!

Questions?

The screenshot shows a web dashboard with a search bar at the top. Below the search bar, there is a user profile for 'garcia' with email 'marta.garcia.carnero@cern.ch' and phone '+41227670620'. A link for 'SmarTeam' is provided. Below the profile, a document titled 'ST0641484_02 b.00 (CATIA Drawing)' is shown, with a sub-title 'STR-L4 Foil Loader + Tank'. The document details include 'CDD Number: SPLTKSTR0003', 'Document last modified by: Louise Olivia Jorat on 10/07/2018', and 'Document state: Checked In / In Work'. A 'Send request to Support' button is highlighted with a blue box. The dashboard also features a 'Commands' sidebar with options like 'Refresh Dashboard Data', 'Launch Catia Large Assembly', 'Maintenance', and 'Send request to Support'. At the bottom, there are sections for 'Interest' and 'My Saved Searches', with a search for 'items of ISO 4017' and search terms 'item iso 4017'.