

MTE Kickers – Kick-off meeting

<https://indico.cern.ch/event/802461/>

M. Manfredi

- 1. SMB new MTE kickers layout**
- 2. Existing environment/constraints**
- 3. Organization chart – «Machine» project**
- 4. SMB provisional planning**
- 5. Conclusion**

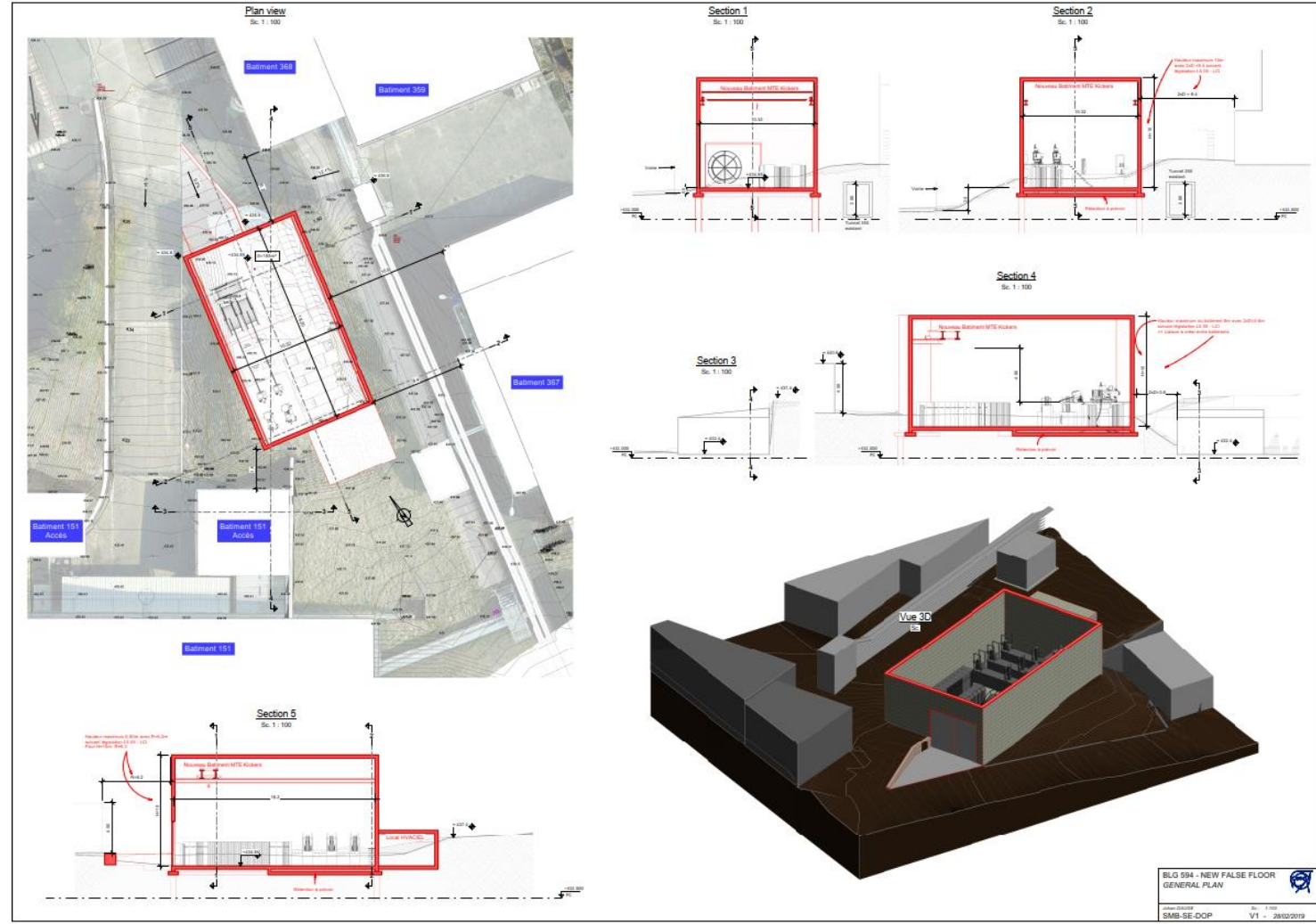
1. SMB new MTE kickers layout

REQUIREMENTS (design inputs for IPP process)

- * Internal distribution ST1059207_25
- * Feedback from EN-HE (handling loads, transport zone, crane lifting capacity, platform for crane maintenance, etc.)
- * Feedback from EN-CV (building ventilation and air condition needs, process needs, volume of airduct/pipework, AHU or cooling unit, powering needs, etc..)
- * Feedback from EN-EL (building general installation needs, process needs, cable trays, etc..)
- * Feedback from other services (IT, fire detection, access control, etc..)
- * Feedback from TE-ABT (oil retention, load of equipment, false floor for racks layout, installation constraints, etc..)



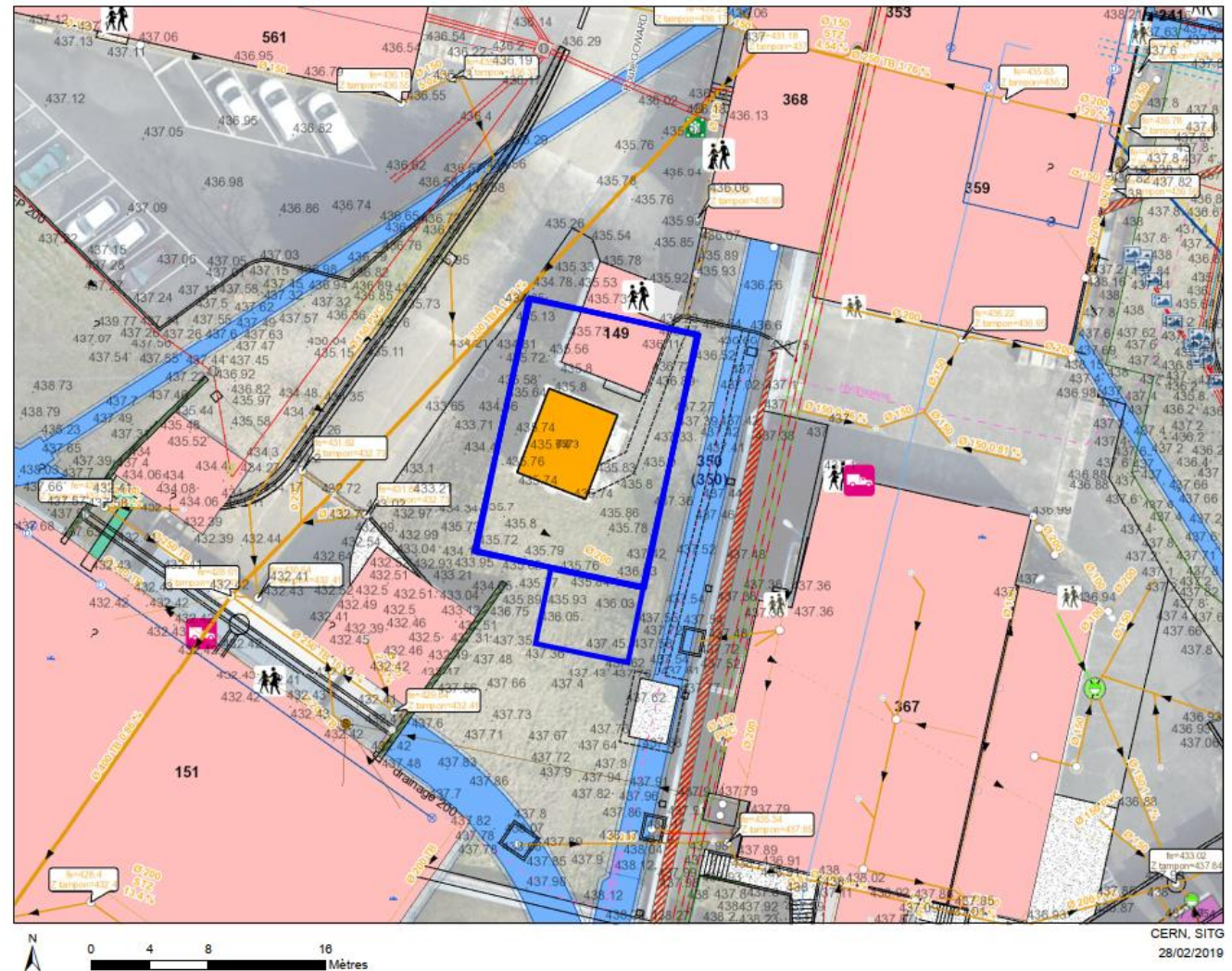
- IDENTIFY WP LEADERS of services involved
- INTEGRATION MEETINGS TO START
- FINALIZE LAYOUT, C&S FOR IPP APPROVAL



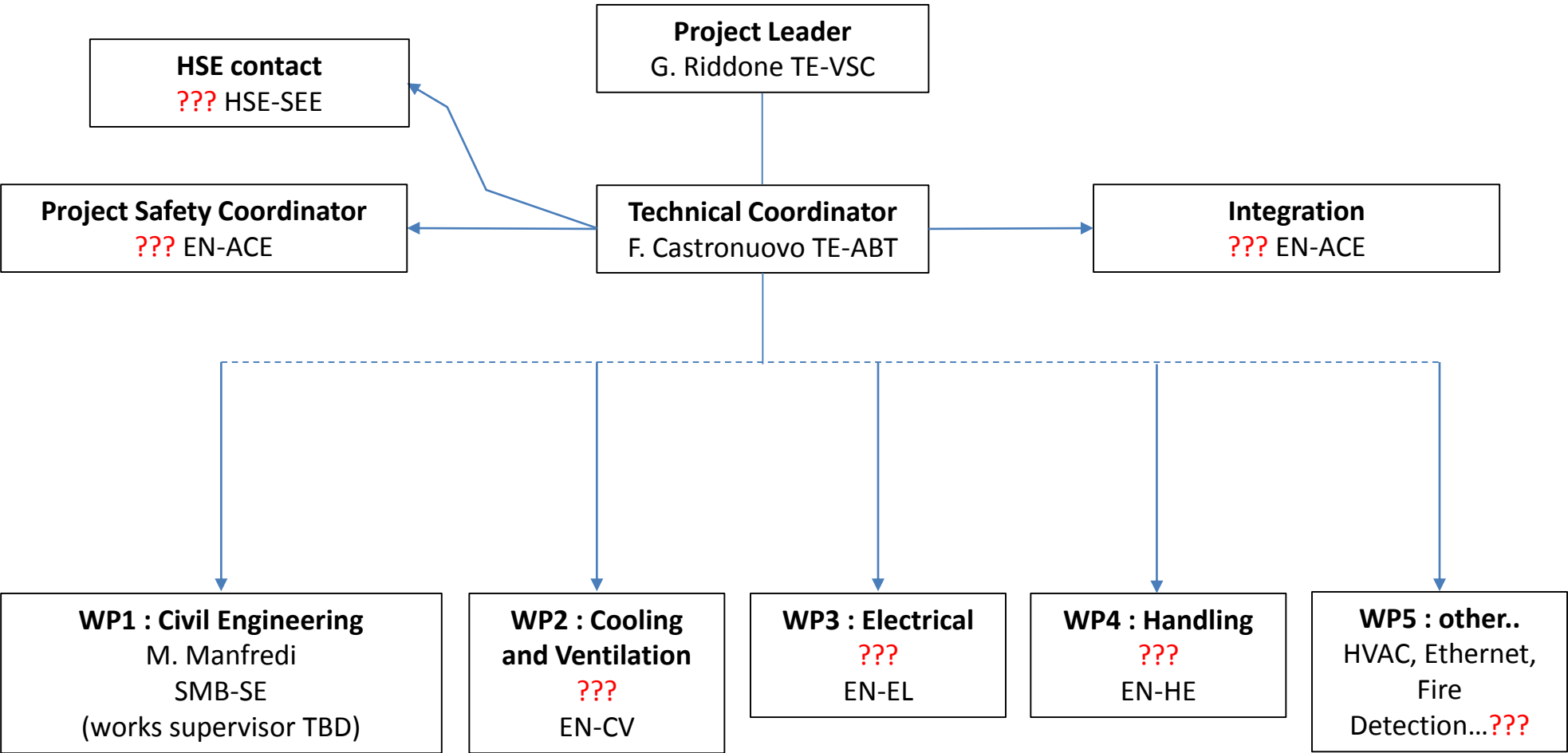
BLG 594 - NEW FALSE FLOOR GENERAL PLAN
 Date: 2019-01-10
 SMB-SE-OOP V1 - 28/02/2019

SMB ongoing verifications for IPP process

- * Internal distribution ST1059207_25
- * Building foundation system (e.g. pile works -> deep foundations due to the soil condition)
- * Building and HVAC annex super-structure (i.e. concrete or metallic/cladding elements). Noise level ?
- * Assess building permit constraints (Swiss land), due to the proximity to others existing buildings -> could impact building layout
- * Assess how to connect new drainage systems towards the existing networks (e.g. clear and dark water) -> water retention basin shall be needed
- * Existing facilities disposal b.149 (Asbestos and/or lead risks?) and b.6573 -> contact owners and coordinate removal
- * Other (roof access for maintenance, smoke extraction needs, external arrangement, parking area, etc..)



3. Organization chart – «Machine» project



2019 (Q1 -> Q4) – IPP step 3 (preliminary study) completion w/ contribution of all services involved. IPP final approval to management

2020 (Q1 -> Q4) – SMB detailed design and IPT process (DO/IT)

2021 (Q1 -> Q4) – CE works period. Preparatory works possible in 2020 ..

2022 (Q1) – CE hand over to TE-ABT. Installation of services can start (*)

... About 2 years, (*) not under SMB liability

2024 (Q2) – Building final hand over to TE-ABT (IPP source)

- Validate project strategy
- Complete and validate organization chart among departments/groups
- Define Technical Coordinator role
- Put in place regular Integration meetings in 2019 to finalize preliminary design
- Finalize IPP document in 2019 (suitable, but not a deadline for the project)
- At this stage, SMB foresees 2 years after IPP approval to hand over the building
- Possibility of dealing with internal delays (apx. 1 year) w/o impact to final deadline