

# EOS

**WLCG Operations Coordination**

Massimo Lamanna

Mar 7

# EOS

- CMS instabilities
  - Followed up with Tommaso
    - circa Nov 2018
    - EOS to "local" (storage (RBD volume) for some VOBoxes)
    - EOS was accessed via EOSFUSE (not FUSEX)
- ATLAS instabilities
  - Followed up with Alessandro
  - No specific issues

# EOS

- Updates

- Two incidents with ATLAS

- Bug triggered by full replication groups (fixed)
      - Triggered by Wigner draining

- Catalogue upgrade

- HOME, BACKUP for long with the disk-resident catalogue

- No RAM limitation, Fast restart (few seconds vs several (many) minutes)
    - EOSBackup ~ 1.5B files --> 3.5 s restart ( $t \sim \text{const}$ )
      - cfr EOSATLAS ~ 200M files --> 1500 s ( $t \sim n$ )

- Tested above 4B entries

- LHC expts: 450M, 194M, 155M and 181M files

- LHCb and ALICE migrated in 2019

- ATLAS next week

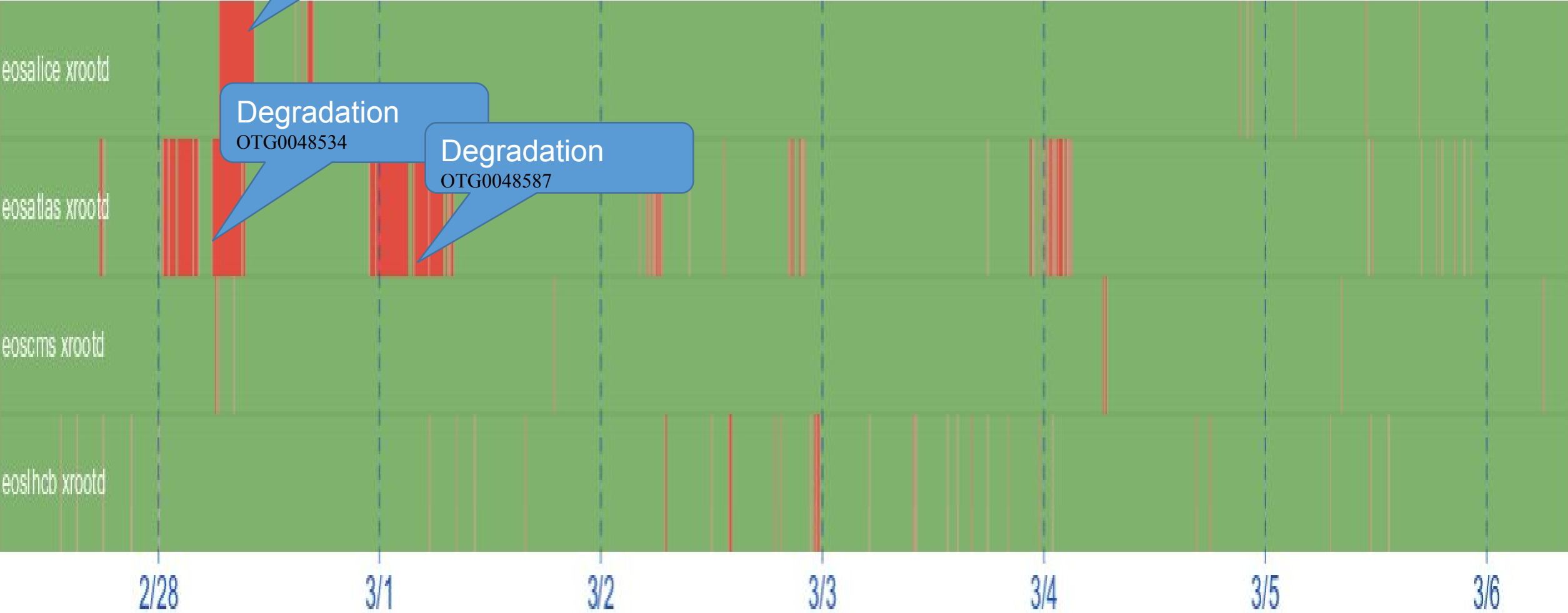
- CMS on April the 1st

QDB intervention  
OTG0048387

Availability

Degradation  
OTG0048534

Degradation  
OTG0048587



Fine grained availability (gets "red" also when commands are relatively slow)  
ATLAS problem: understood. Fixed in 4.4.26

# FUSE vs FUSEx

- FUSEx in use on EOSHOME (CERNBox: /eos/user/j/jdoe)
    - And internal instances, testing, etc...
    - Understanding usage on BATCH (together with CM)
      - Developments goes here
      - FUSE (the old stuff): maintenance only
- Deployment on LHC to be discussed  
After catalogue upgrade