





LHC Injectors Upgrade

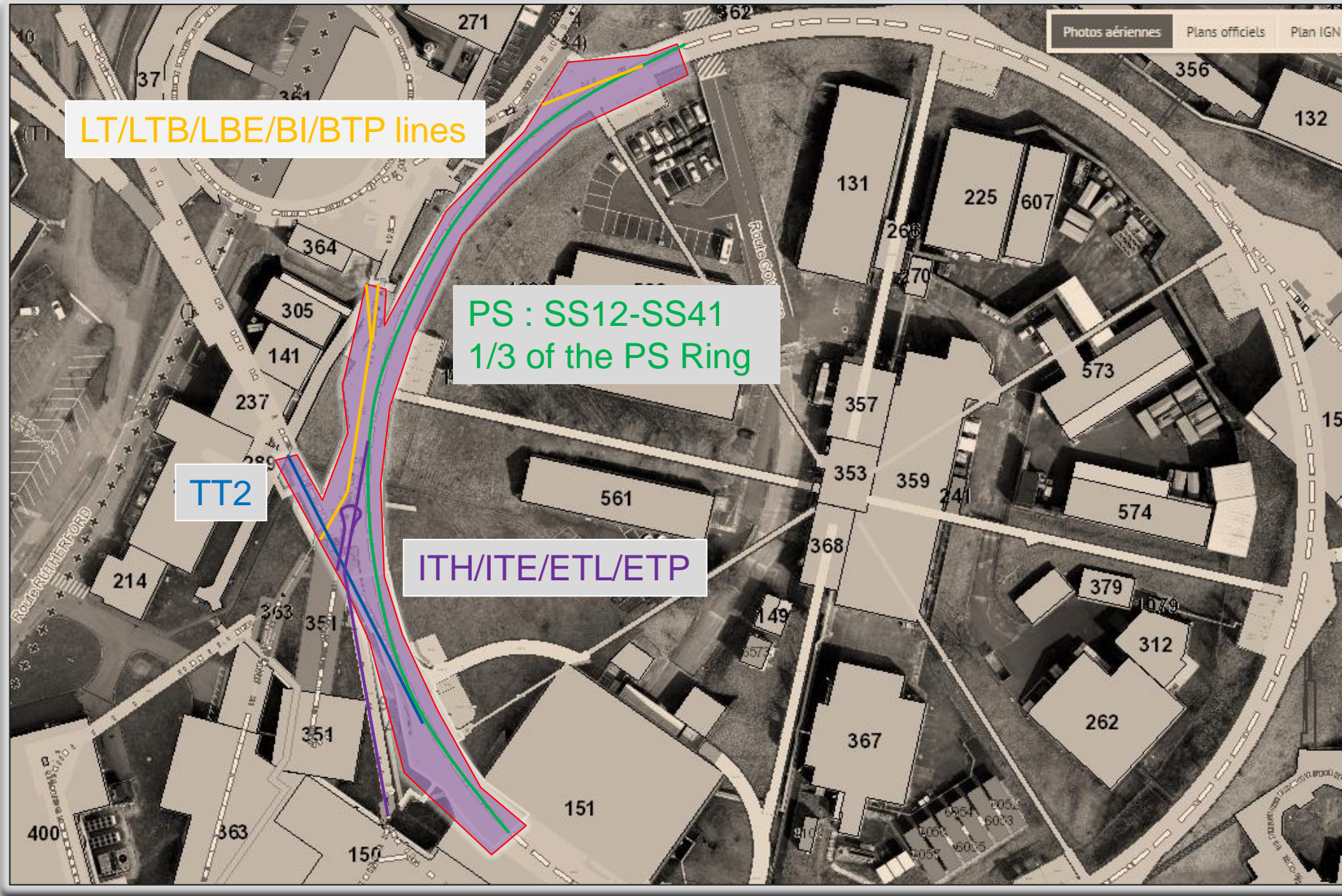
# Scheduling Switchyard access during POPS/POPS-B/Linac4 commissioning (Part 2)

Denis Cotte, BE-OP

F.Baltasar Dos Santos Pedrosa, O.Hans, M.Delrieux, B.Mikulec, A.Akroh, F.Chapuis, F.Boattini,  
Y.Gaillard, S.Pittet, D.Aguglia, D.Bodart, A.Newborough, Ana Guerrerro, R.Mompo,

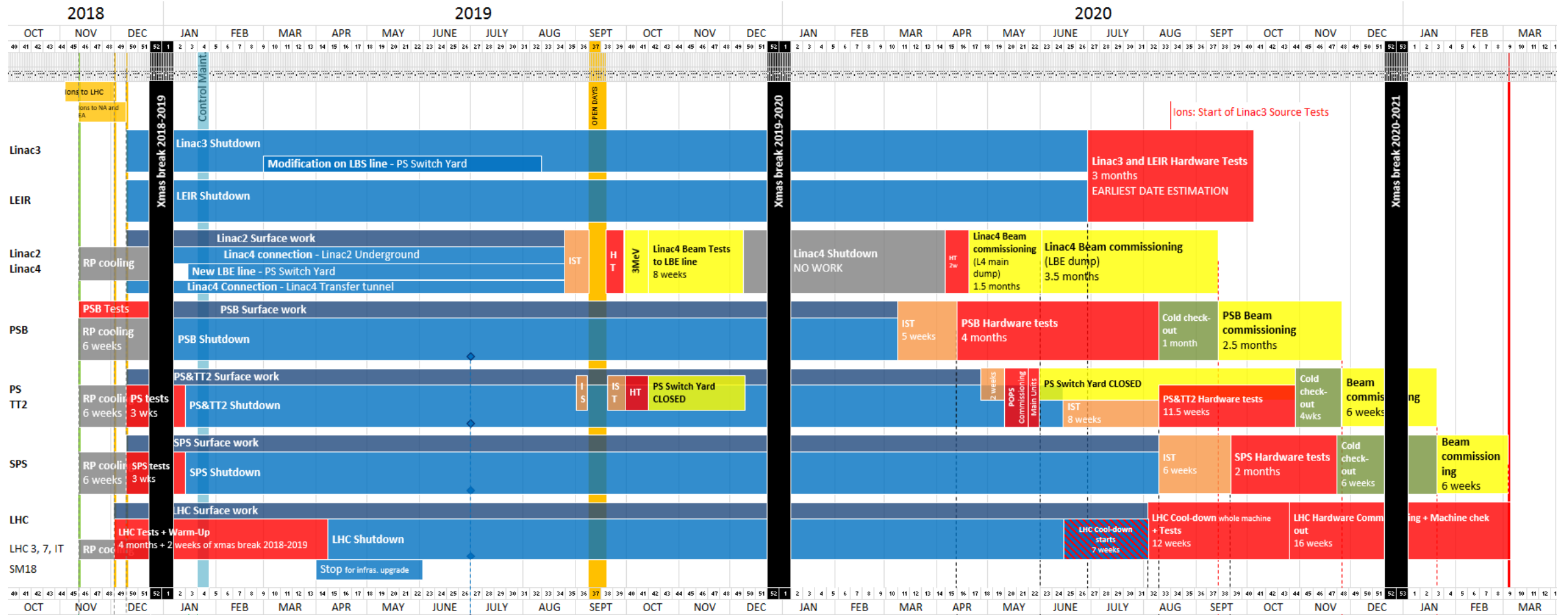


# PS - SWITCHYARD Overview





# LS2 Master Schedule v2.0 (EDMS1687788)



Stop cooling in Linac2 | Stop cooling in SPS | Start of work in the high radiological risk areas defined by HSE-RP  
 Stop cooling in Linac3, LEIR  
 Stop cooling in PSB, PS (except b.359)  
 end of beam LHC  
 end of beam Linac2, PSB, ISOLDE, East Area, nTOF, AD, AWAKE, HiRadMat  
 end of high intensity beam North Area  
 end of beam Linac3, LEIR, PS, SPS, North Area

Close PSB | Close PS Switch Yard | Close PS | Close SPS | LHC PROBE beam ready for PS | LHC PROBE beam ready for SPS  
 Close LHC Beam ready for PSB

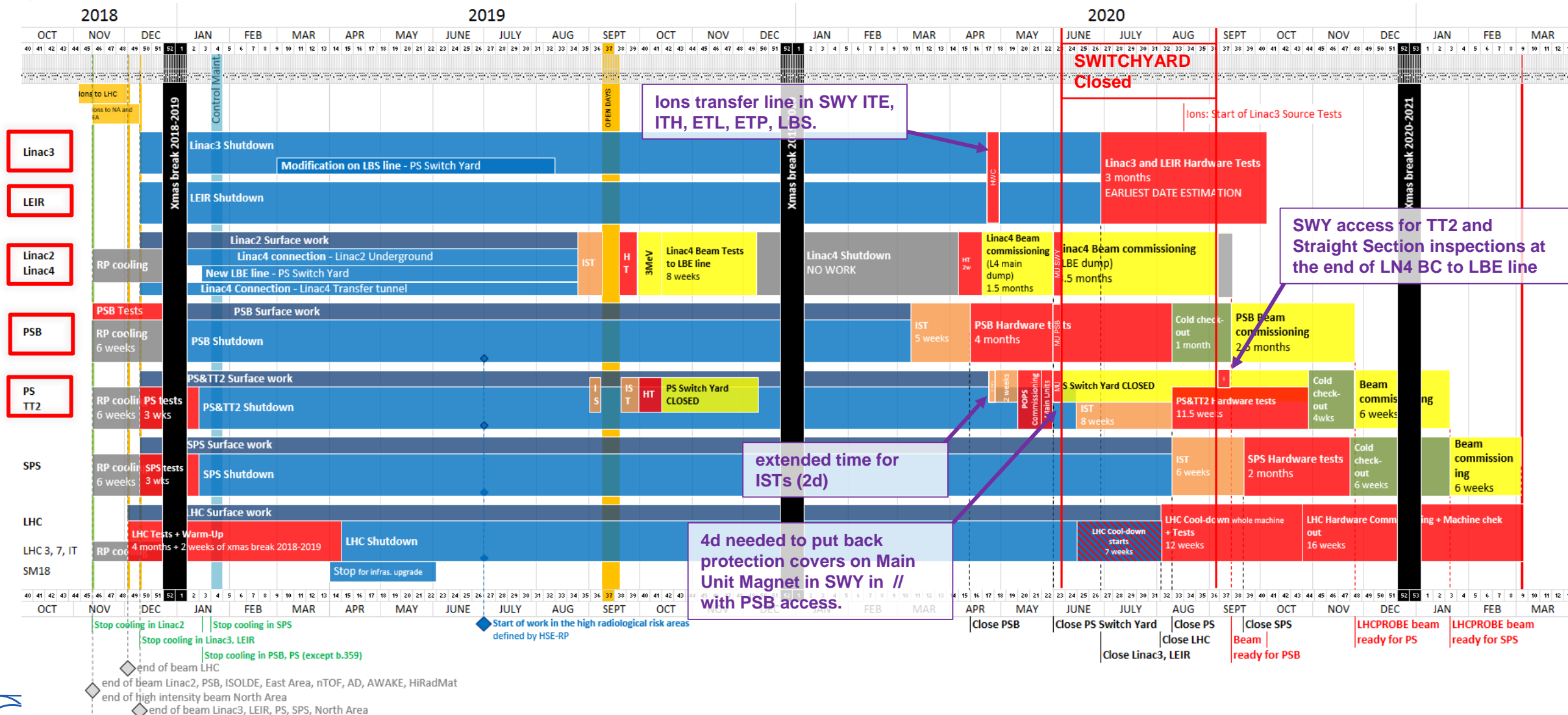
LHC Commissioning Coordination  
 29 March 2019

Denis Cotte



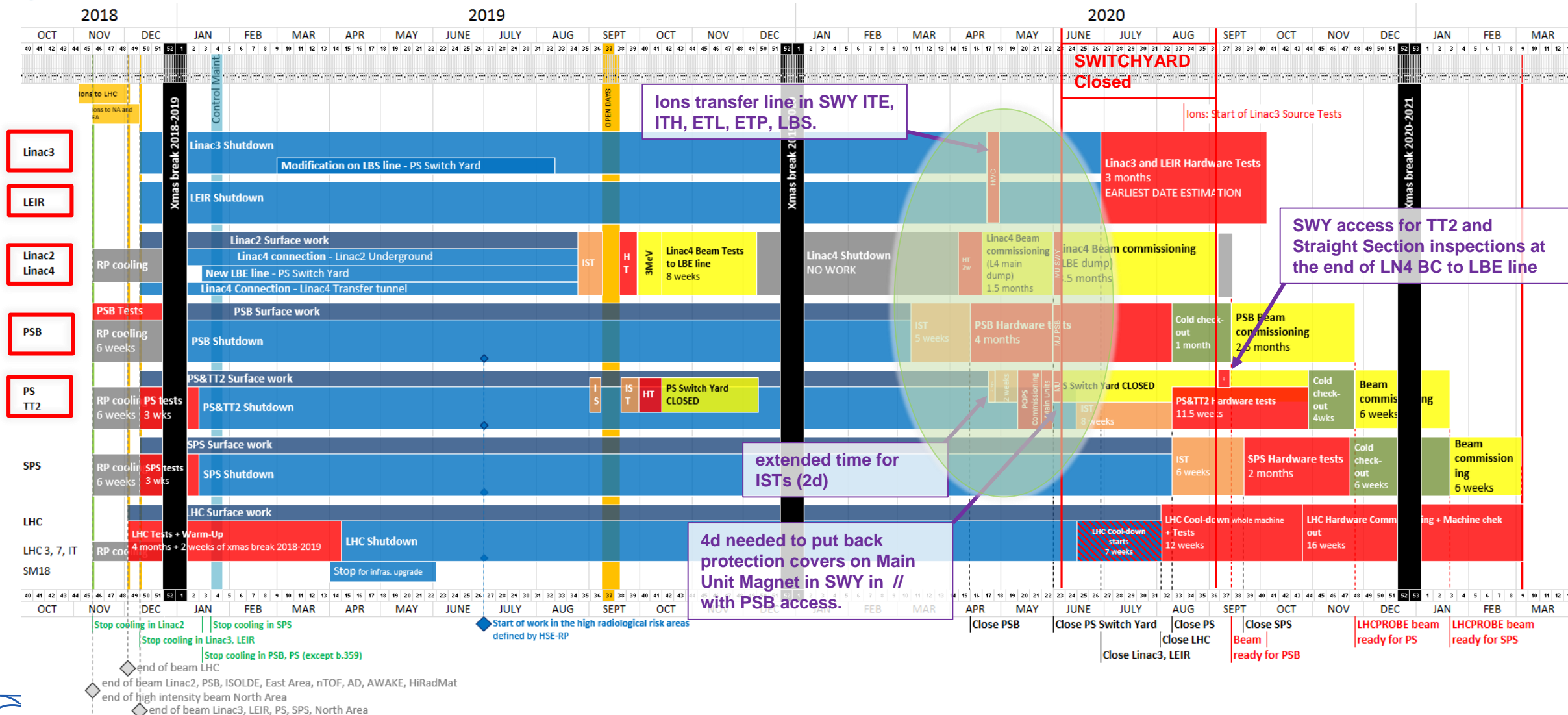


# LS2 Master Schedule (Proposal for SWY)





# LS2 Master Schedule (Proposal for SWY)



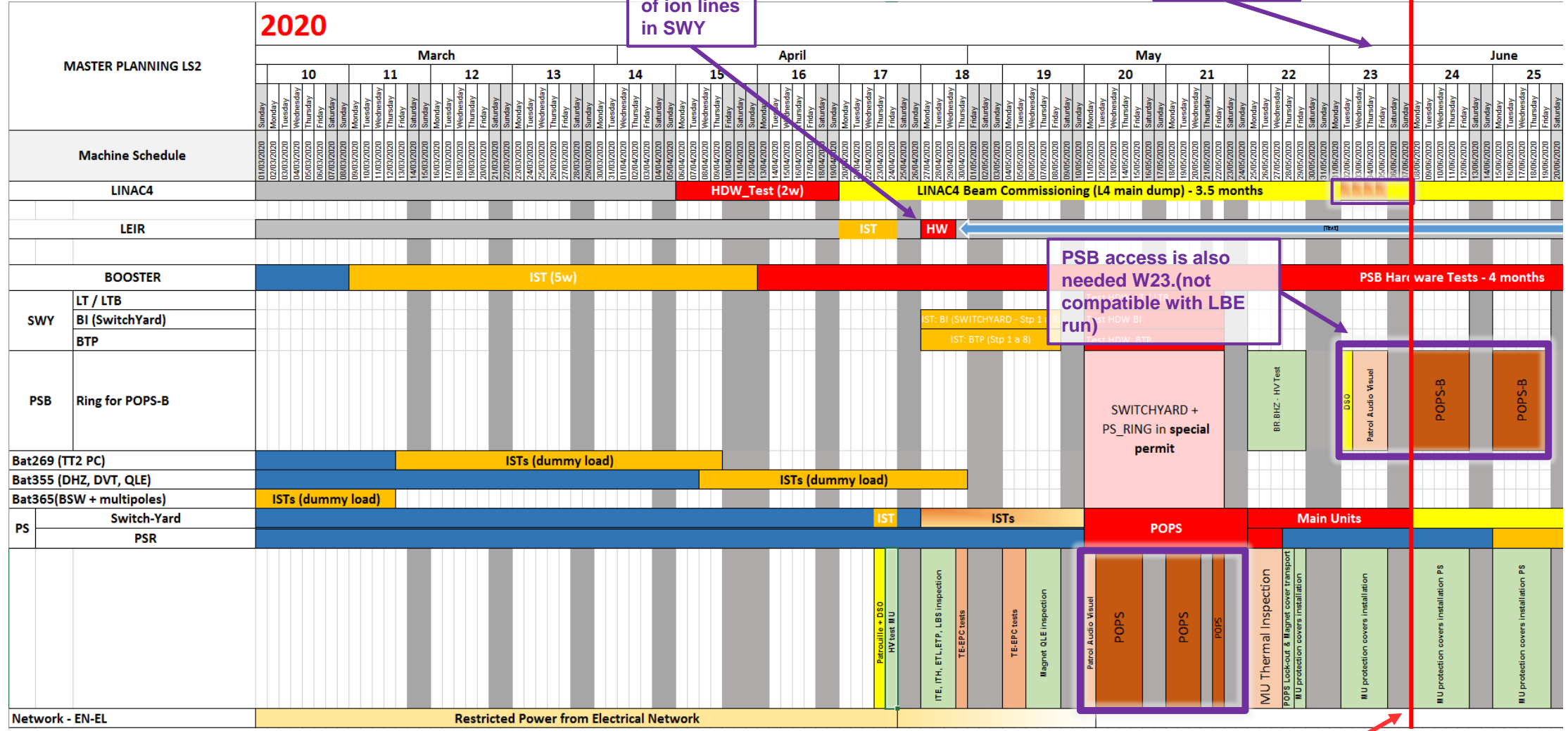


# First part planning in details

We need one more week W23 with SWY open.

SWITCHYARD Closed

HW tests of ion lines in SWY



PSB access is also needed W23 (not compatible with LBE run)

End of W23, all Main Unit Magnet in PS-SWY will be tested and equipped with protection covers and HV tests done.

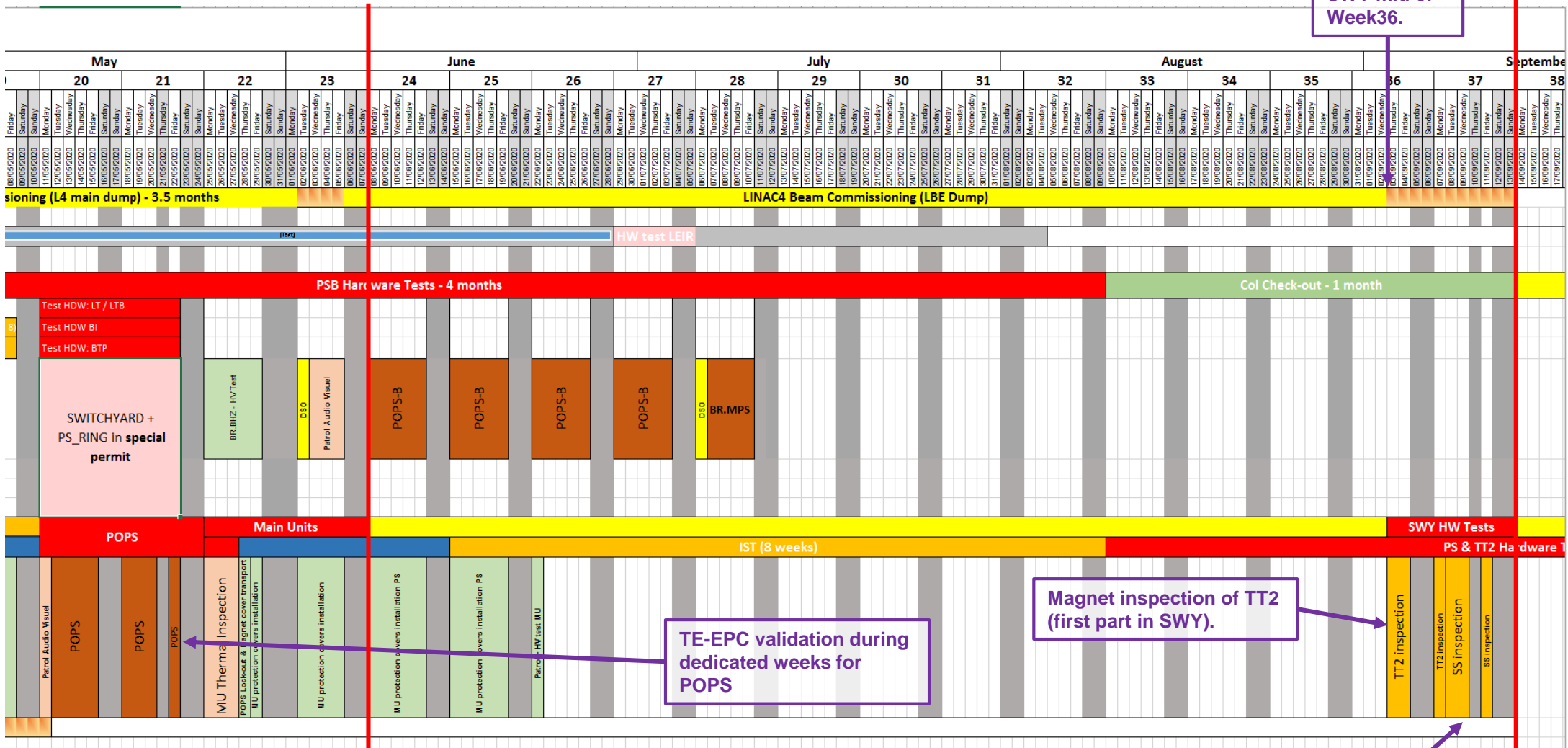




# Second part planning in details

SWY last closing

SWITCHYARD Closed



TE-EPC validation during dedicated weeks for POPS

Magnet inspection of TT2 (first part in SWY).

+ Auxiliary Magnet inspection in Straight Section of PS-SWY.

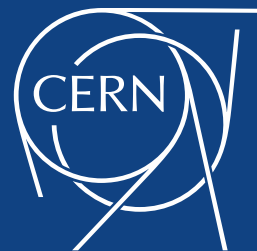
LIU Commissioning Coordination  
29 March 2019





# Summary

- **SWITCHYARD schedule is tight but feasible by giving access time before and after LN4 LBE run.**
  - POPS specialists are confident with the current planning.(capacitor container)
  - Concerning access, allocate several days in a row is preferable than only 1day/week.
  - At the end of W23 2020, all MU magnets should be ready in SWY. (need to re-open SWY for auxiliary magnets and TT2)
- **Safety aspect during IST and HWC.**
- **Need a confirmation from EPC for ions Transfer Line.**



[www.cern.ch](http://www.cern.ch)