

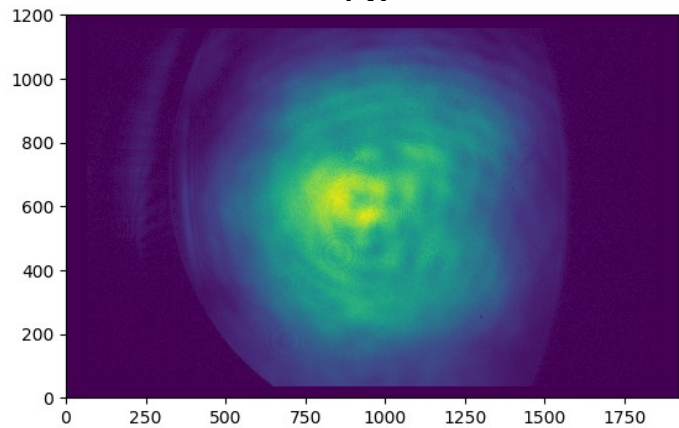
Zero Order Gaussian  
Valentina  
03/25/19

# Backgrounds

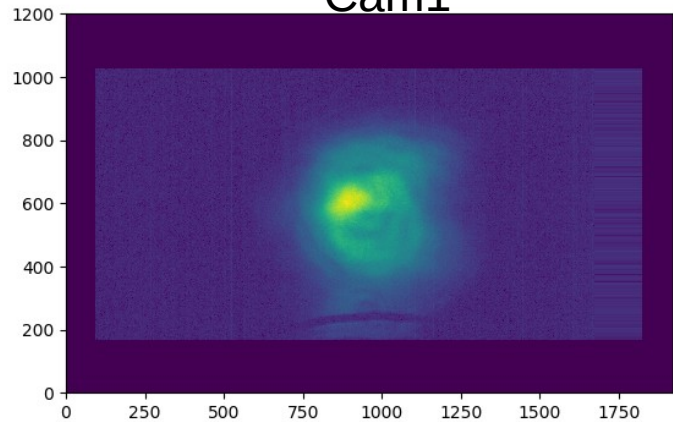
- Gabor's method requires an azimuthal symmetric input.
- Take 5 images on the laser beam line and use a Hermit Gaussian fitting to find the phase at the Rb entrance.

# 5 images

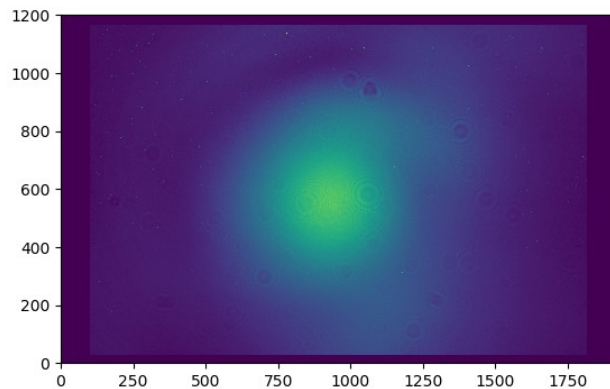
NF



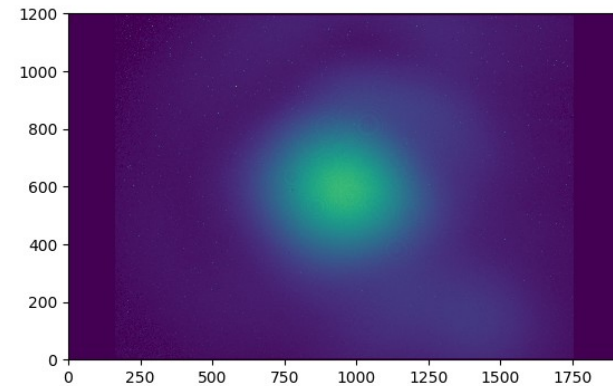
Cam1



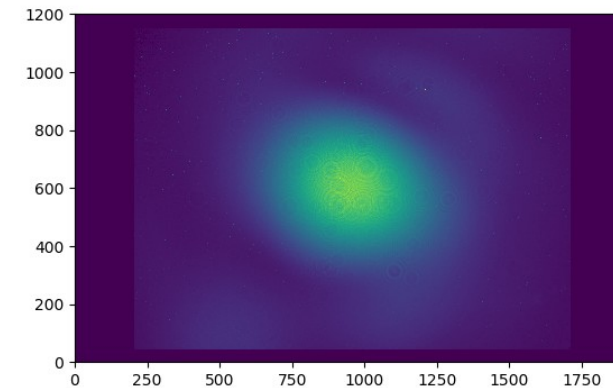
Cam3



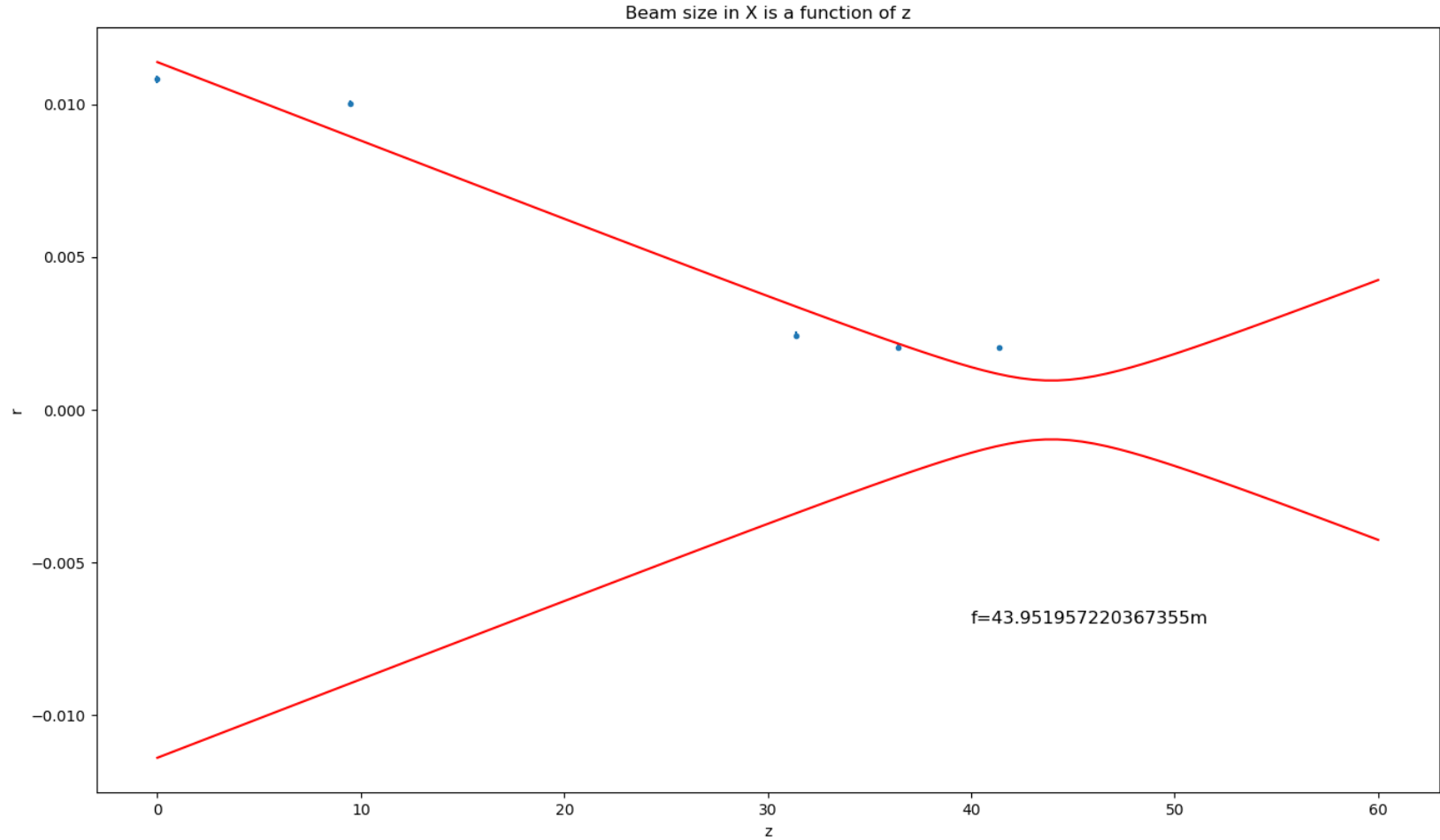
Cam4



Cam5

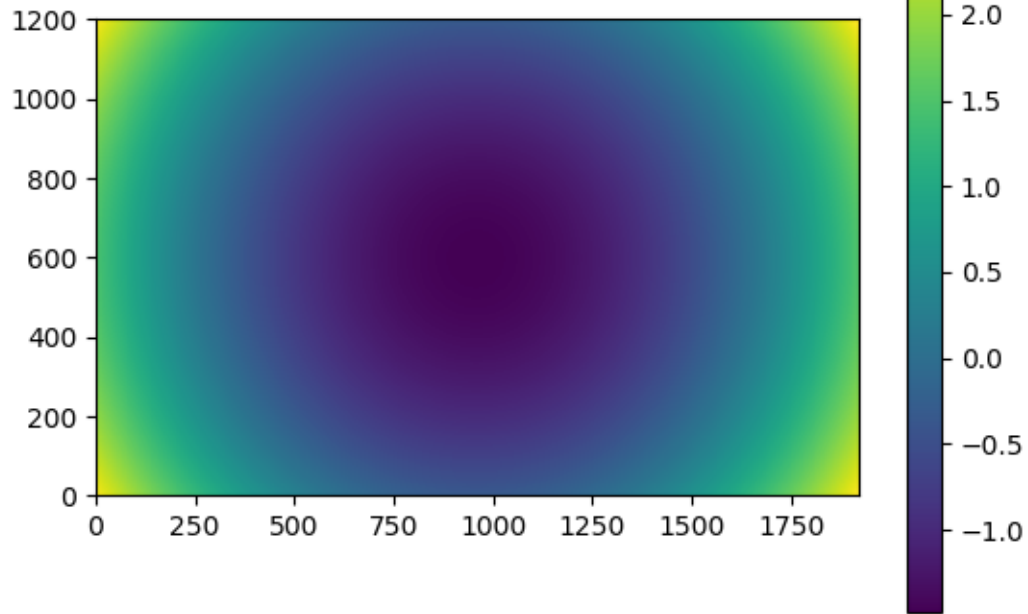


# Gaussian Beam Fitting

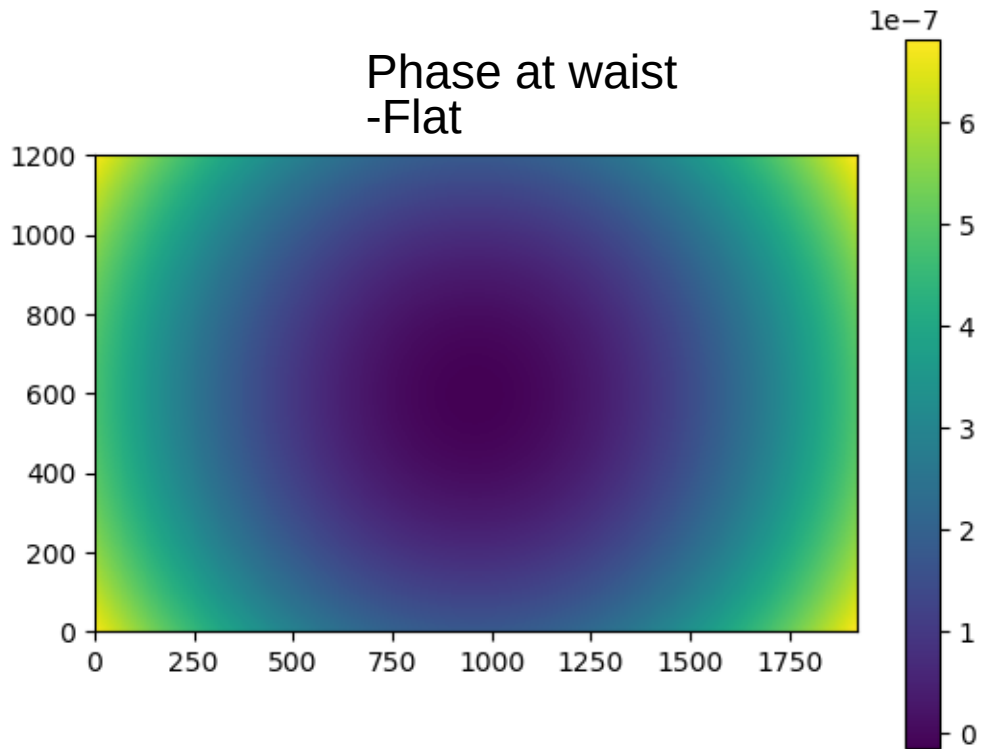


# Phase Check

Phase at NF  
-Parabolic



Phase at waist  
-Flat



[https://drive.google.com/drive/u/0/folders/  
1H5gIraDIsARb7KqwfcTduBmR-ncimUvm  
/ZeroOrderGaussianAtCam3.npy](https://drive.google.com/drive/u/0/folders/1H5gIraDIsARb7KqwfcTduBmR-ncimUvm/ZeroOrderGaussianAtCam3.npy)