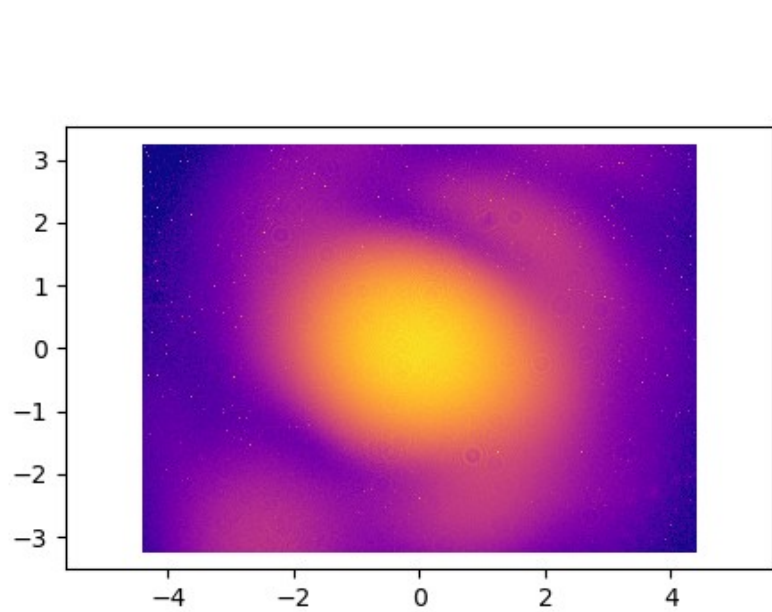


Cam5 vs PickOff Calibration
Valentina and Mark
03/25/2019

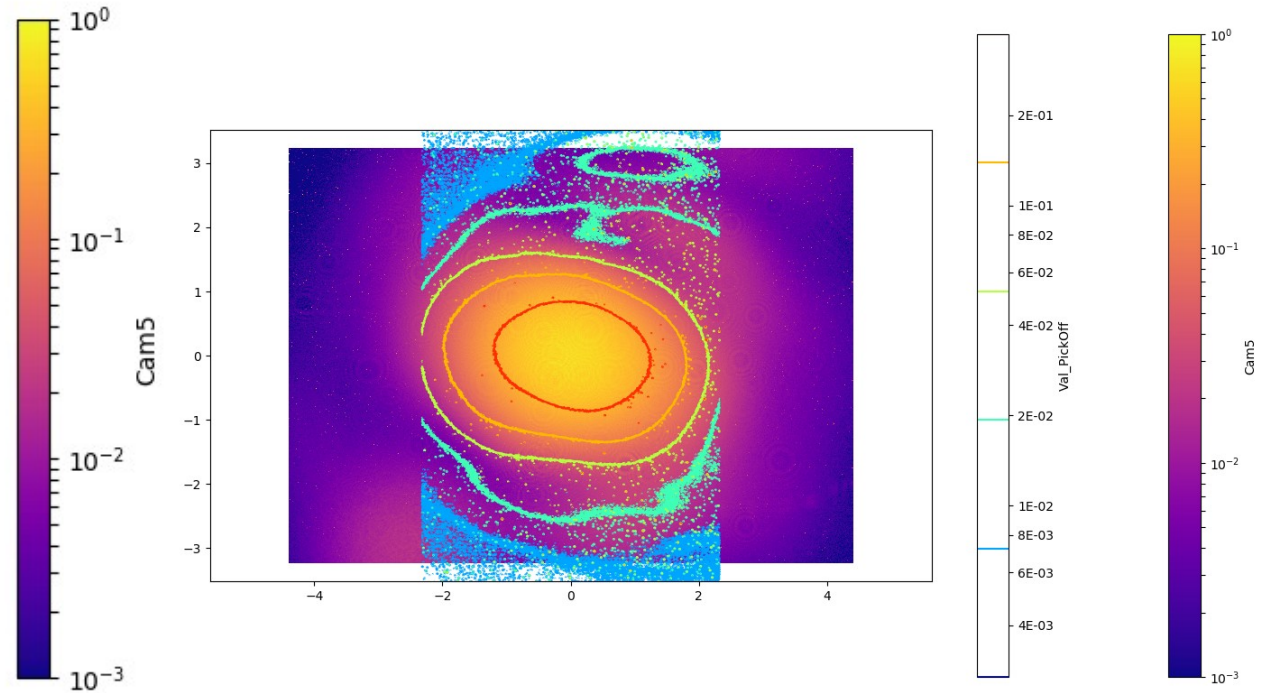
PickOff Calibration

- PickOff image has a lensing system → need to be calibrated by Cam5
- Orientation
 - Flip through vertical axis
 - 90 degrees rotation
- Shift the images to the center for overlapping comparison
- Method 1:
 - 2d Gaussian fitting (horizontal and vertical) for both Cam5 and PickOff
- Method 2:
 - Line out
 - Twice 1d Gaussian fitting
- Method 3:
 - Rotated 2d Gaussian fitting (find major/ minor axis and offset angle, theta): Cam5
 - Use theta as offset angle for PickOff's fitting
 - Then scale

Result 1: Cam5 vs Scaled PickOff Horizontal and vertical

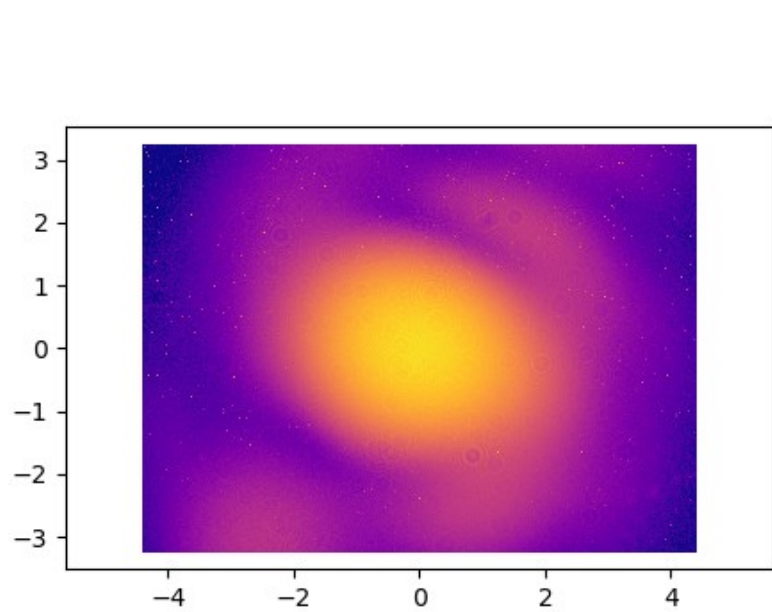


Cam5

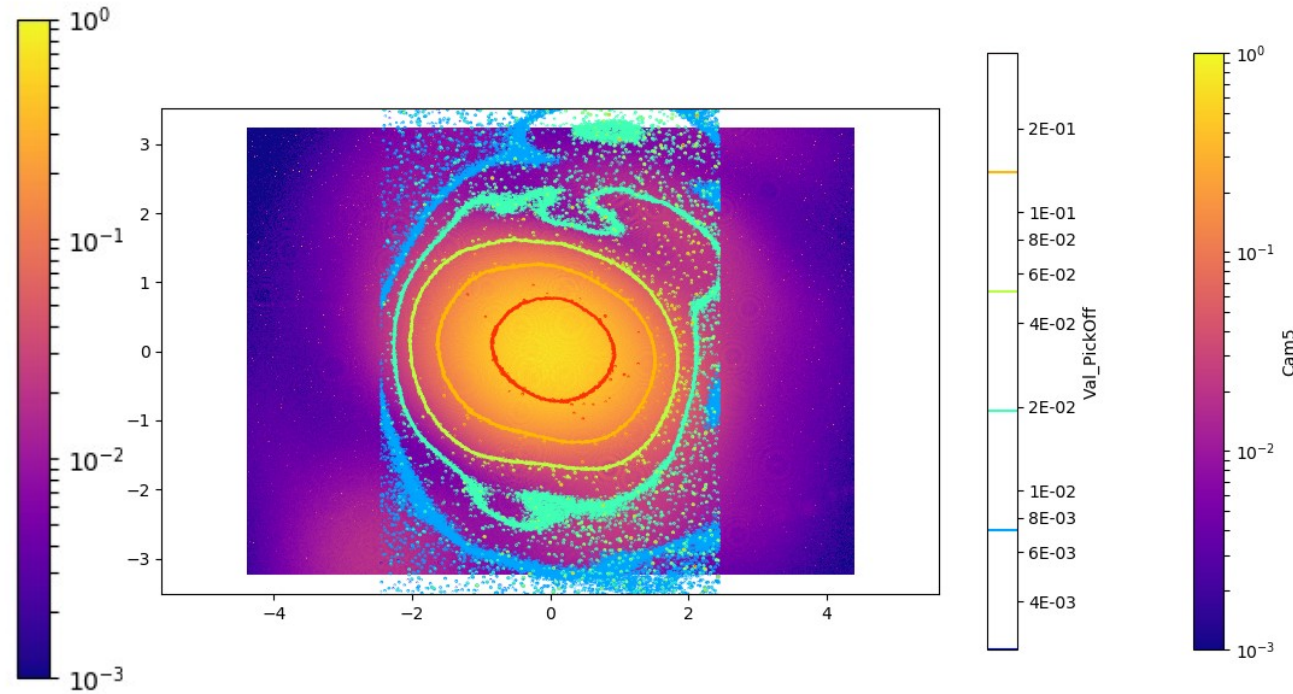


Cam5+Valentina's PickOff

Result 2: Cam5 vs Scaled PickOff LineOut

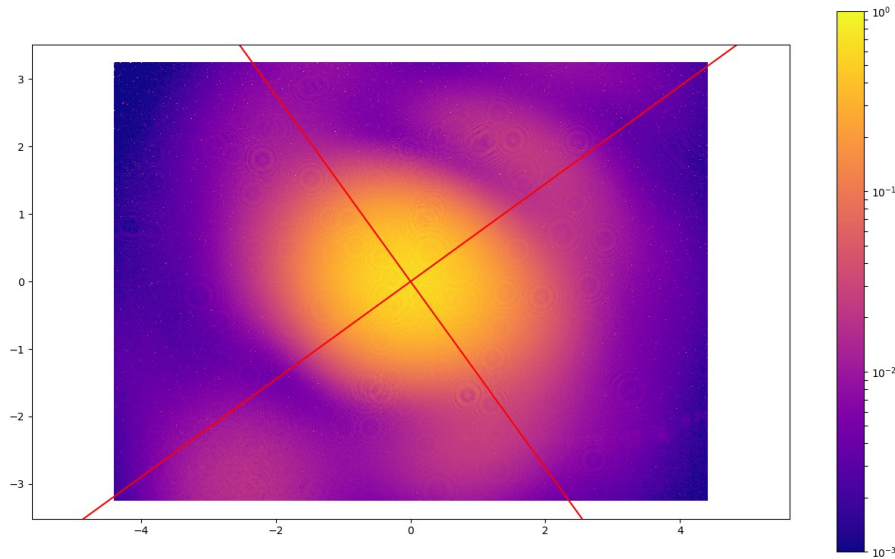


Cam5

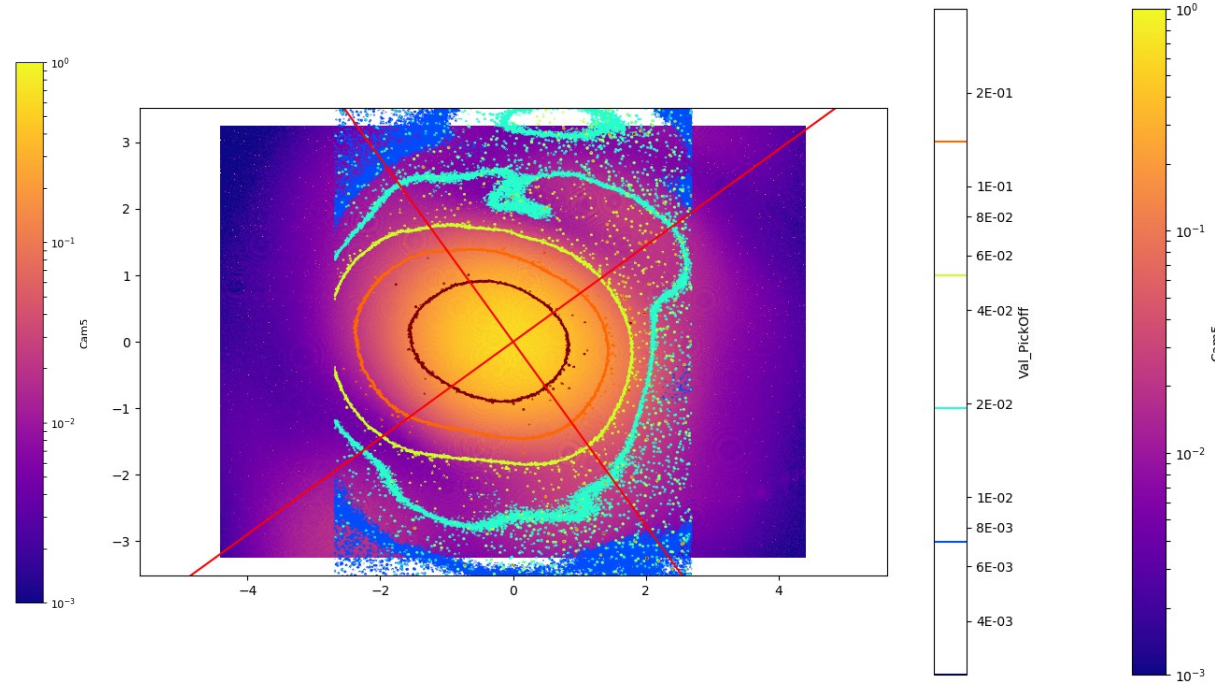


Cam5+Valentina's PickOff

Result 3: Cam5 vs Scaled PickOff Offset Angle

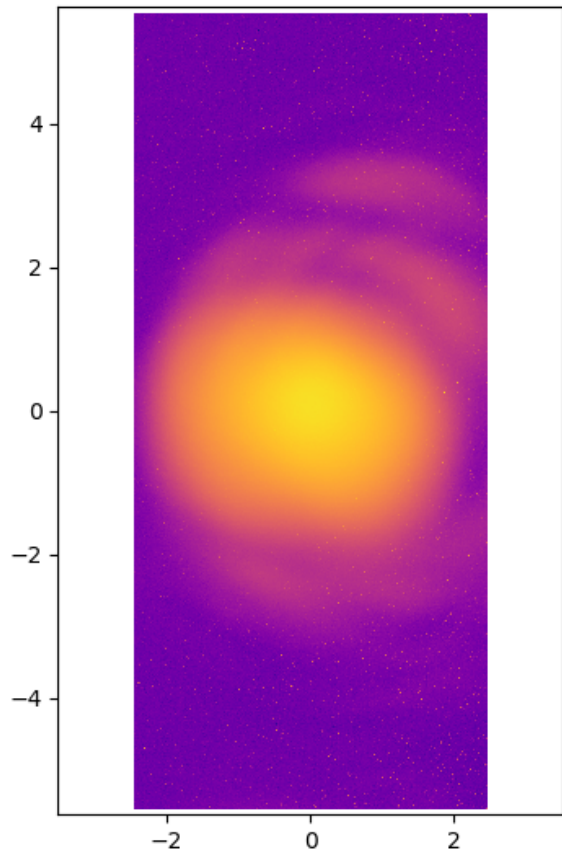


Cam5

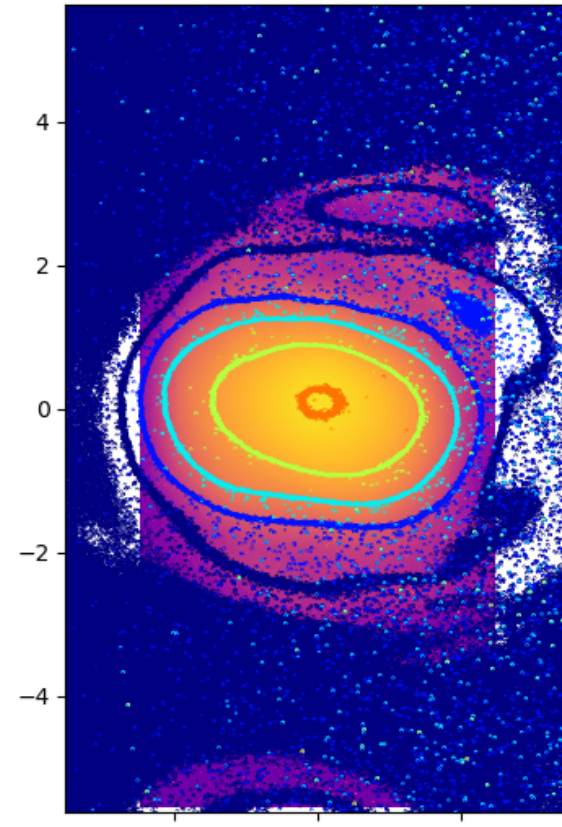
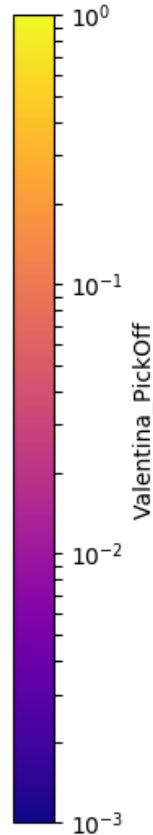


Cam5+Valentina's PickOff

Cam5 vs Scaled PickOff Mark



Valentina's PickOff



Valentina's PickOff+ Mark's PickOff

