

*East Hall under construction - 1962*

## EN-EL-ENP activities (AC network renewal)

M. Polenghi

In collaboration with R. Necca, P. Gallay, J.P. Billon Grand, K. Zielinski



ENGINEERING  
DEPARTMENT



# Contents

---

- Activities already done in b. 251 and b.263
  - Cables disconnection
  - Oil transformers removal
  - Switchboards removal
- Activities to be done soon in b. 251
- Ongoing design progresses in b. 251
- Ongoing design progresses in b. 157

# Activities already done

---

The removal of 9 transformers in b. 251 (ME11) and 263 (ME22) has been completed on 08/03/2019



# Activities already done

---

Due to the presence of oil in the transformers' pits we had to send some pebbles samples to a laboratory to check the presence of hydrocarbons or PCB.

An invitation to tender has been created to identify the company that will perform the pits cleaning (just in b.251).

The results from the procurement will come soon.

# Activities already done

---

The ERD switchboards in b.251 have been removed by Hazemeyer and they will be kept as emergency spares for existing plants.

Two switchboards to be removed are still present in b.263.



# To be done 'soon'

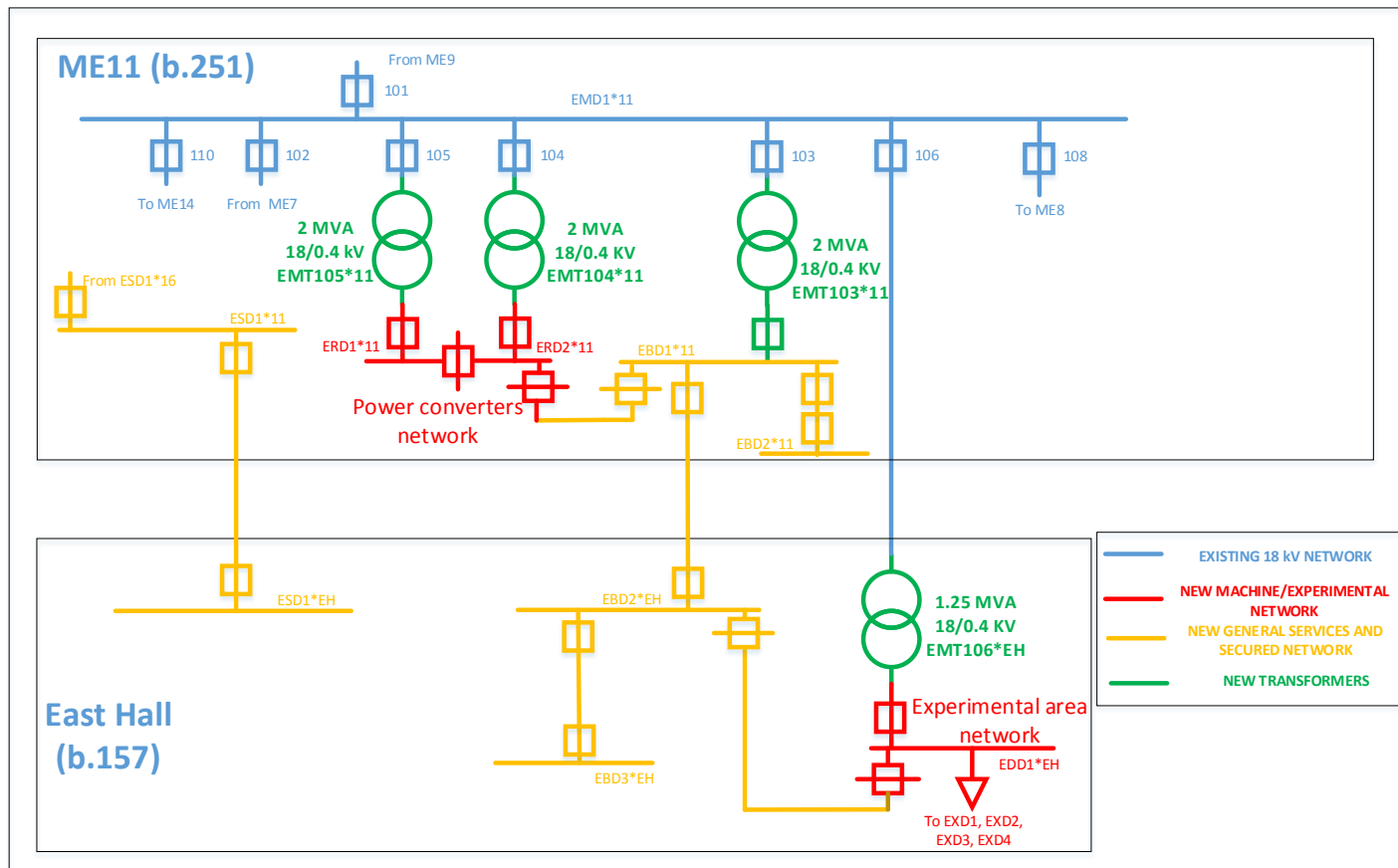
---

The 18kV line supplying the ME8 will be moved to another feeder in ME11 and the last three switchgears on the right will be removed within 05/07/2019.



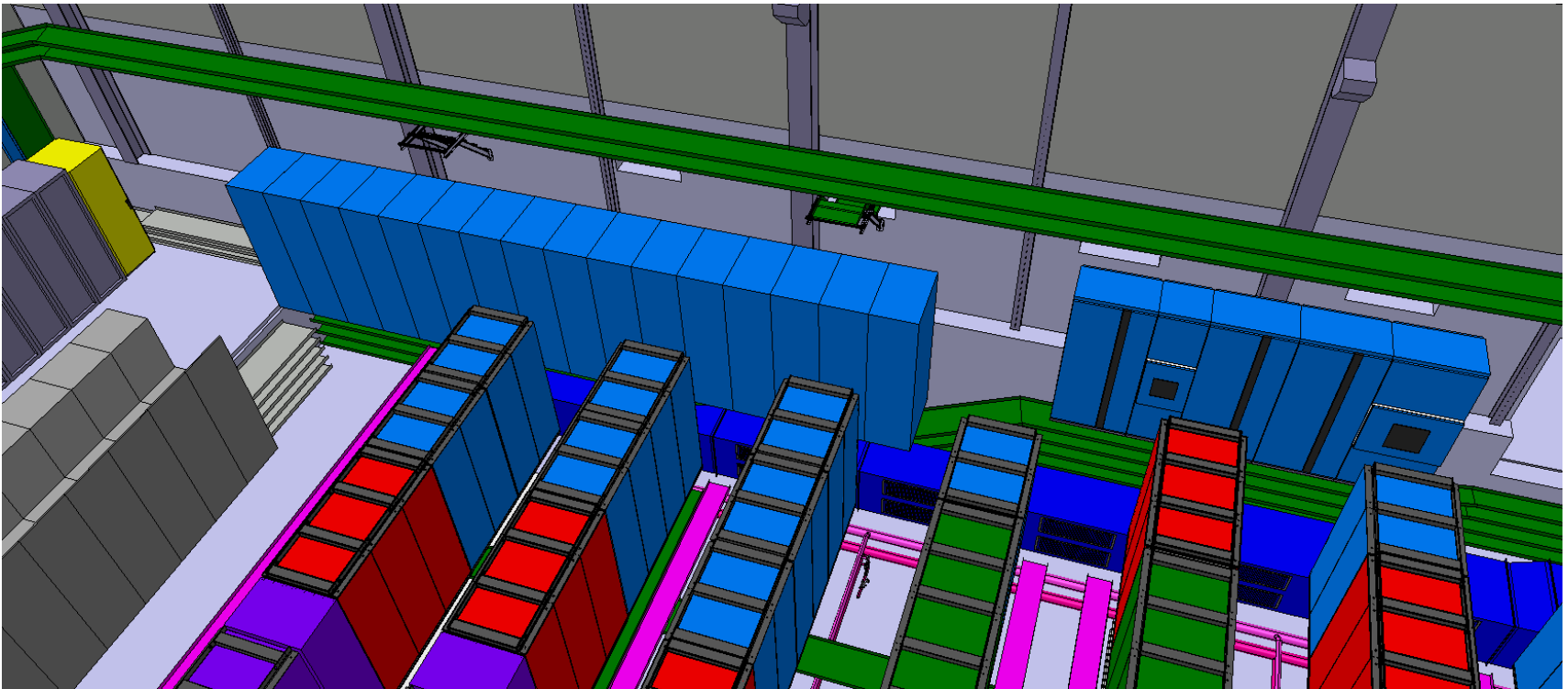
# Design and integration

Despite some users still have to provide the electric needs, the main network structure is practically finalized.



# Design and integration in b.251

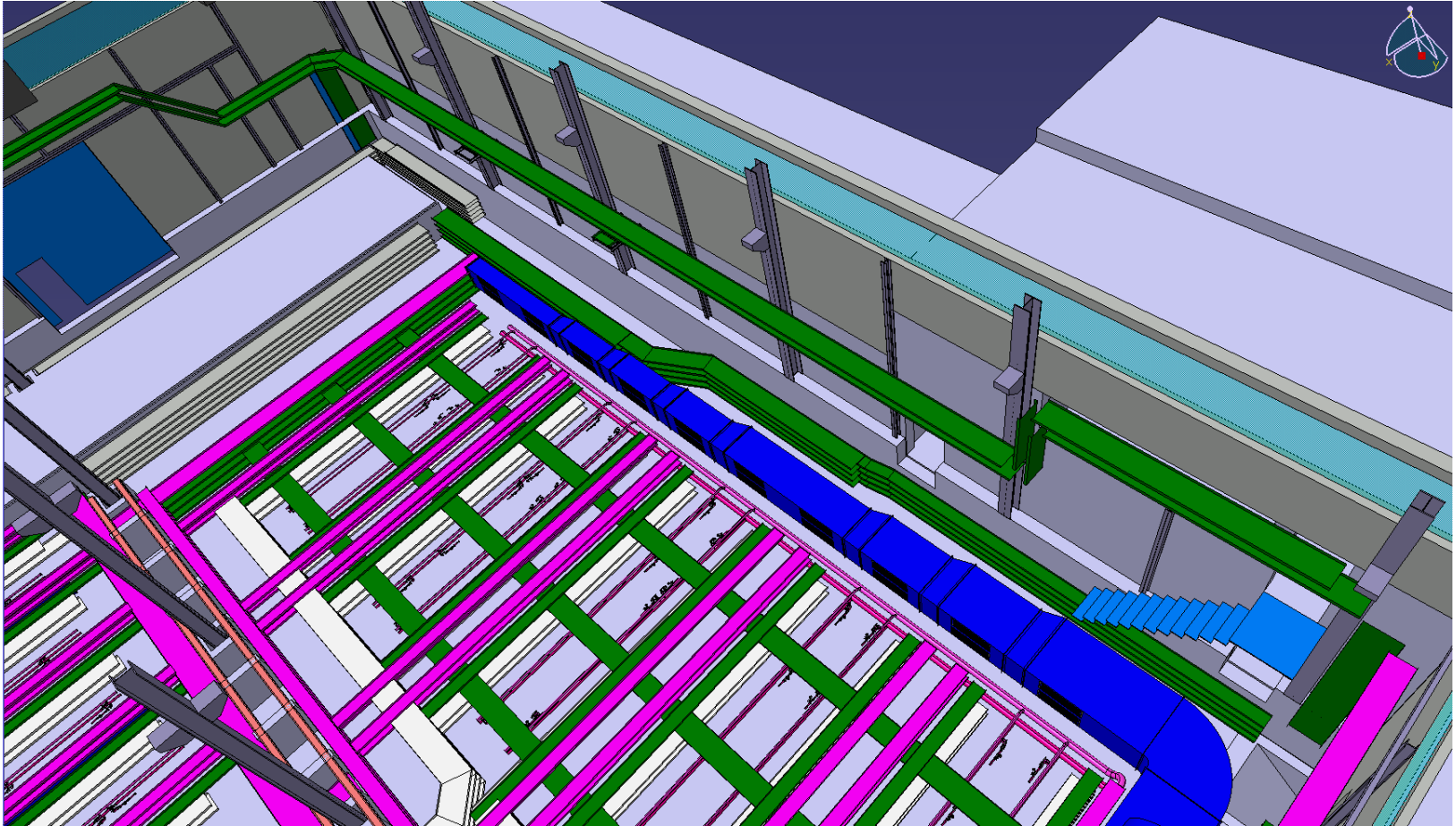
## Main switchboards integration (ERDs and EBD)





# Design and integration in b.251

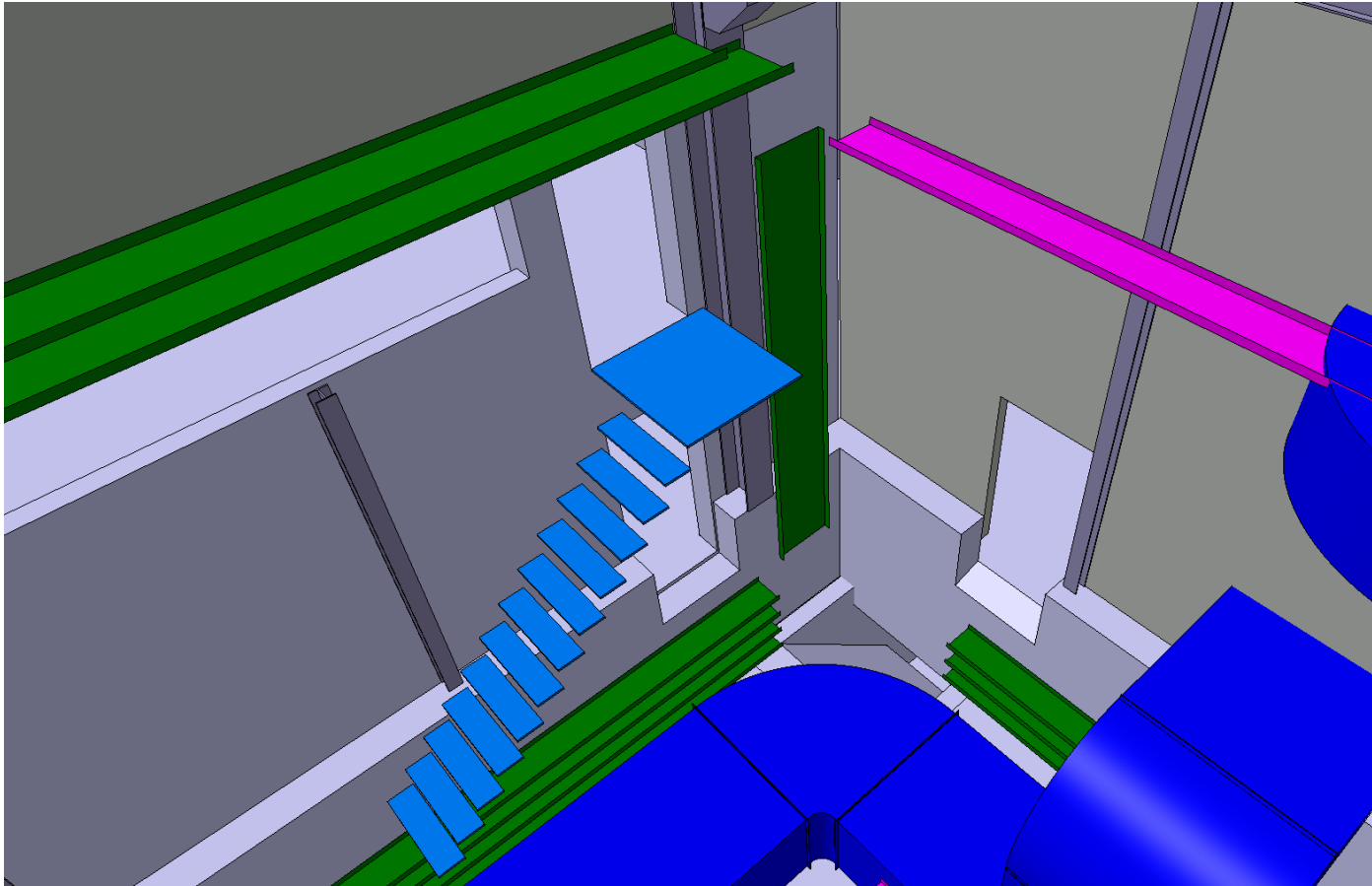
## Cable ladders integration



# Design and integration in b.251

---

Cable ladders integration – access to the technical gallery



# Design and integration in b.251

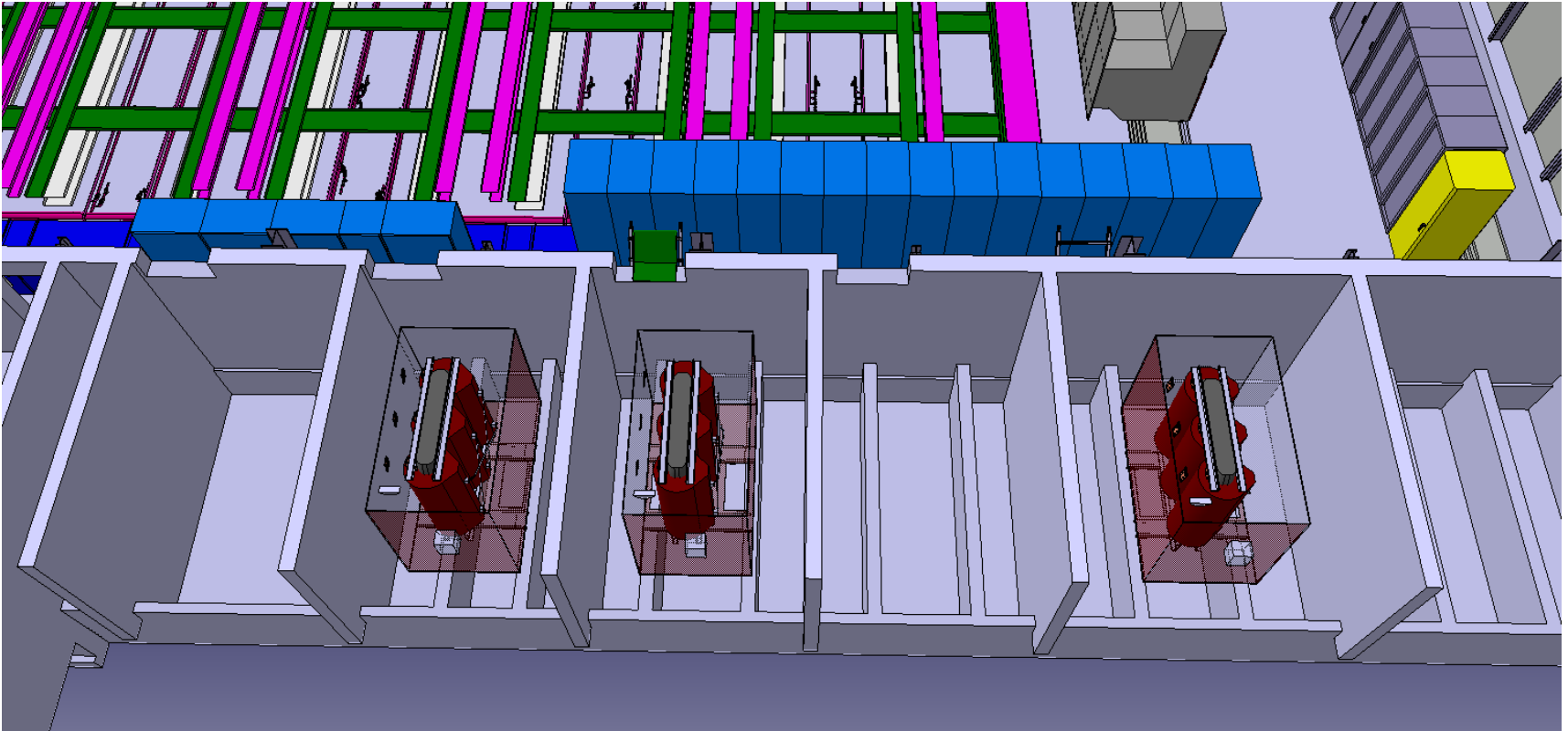
---

But currently it is like this...



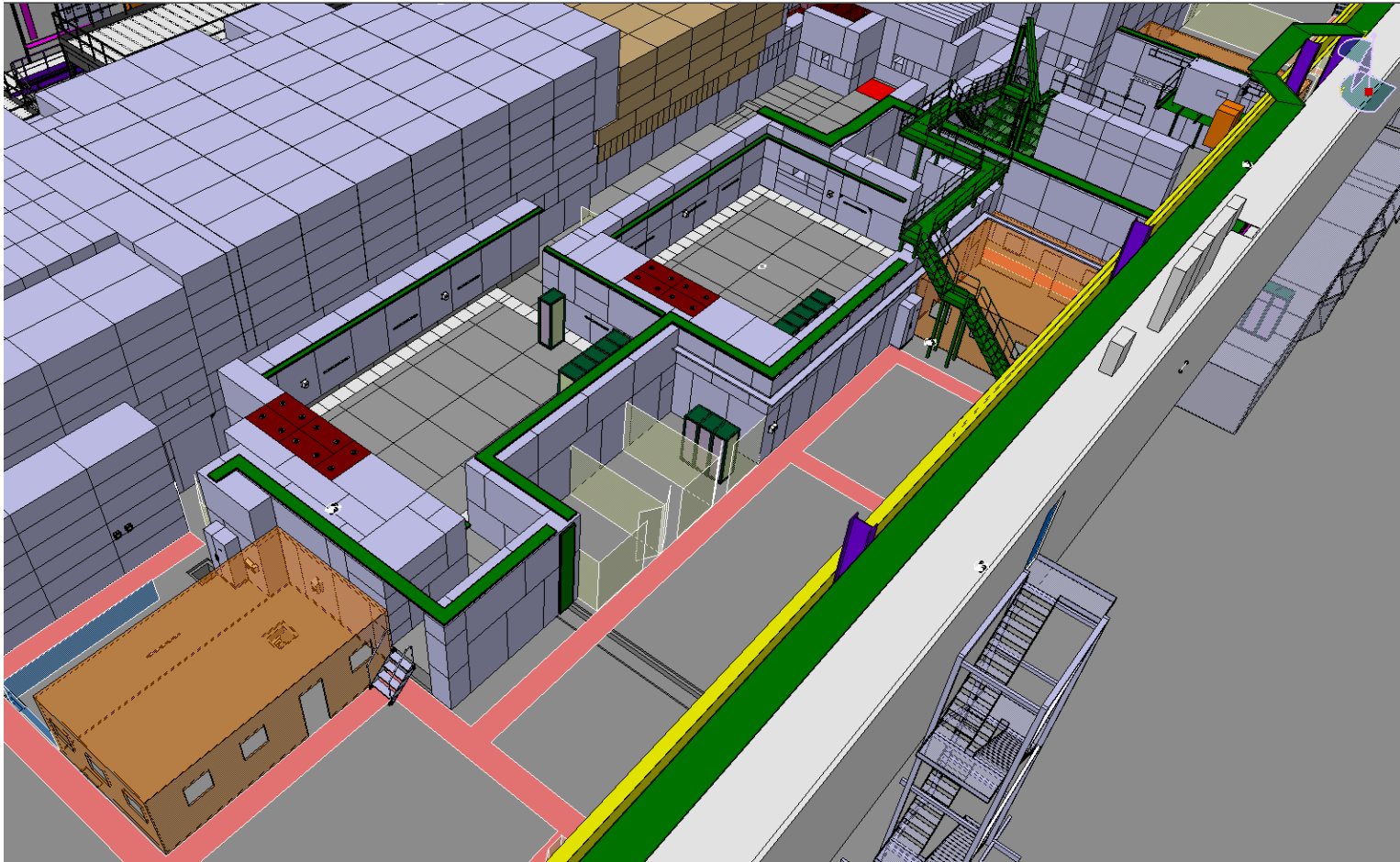
# Design and integration in b.251

## Transformers integration



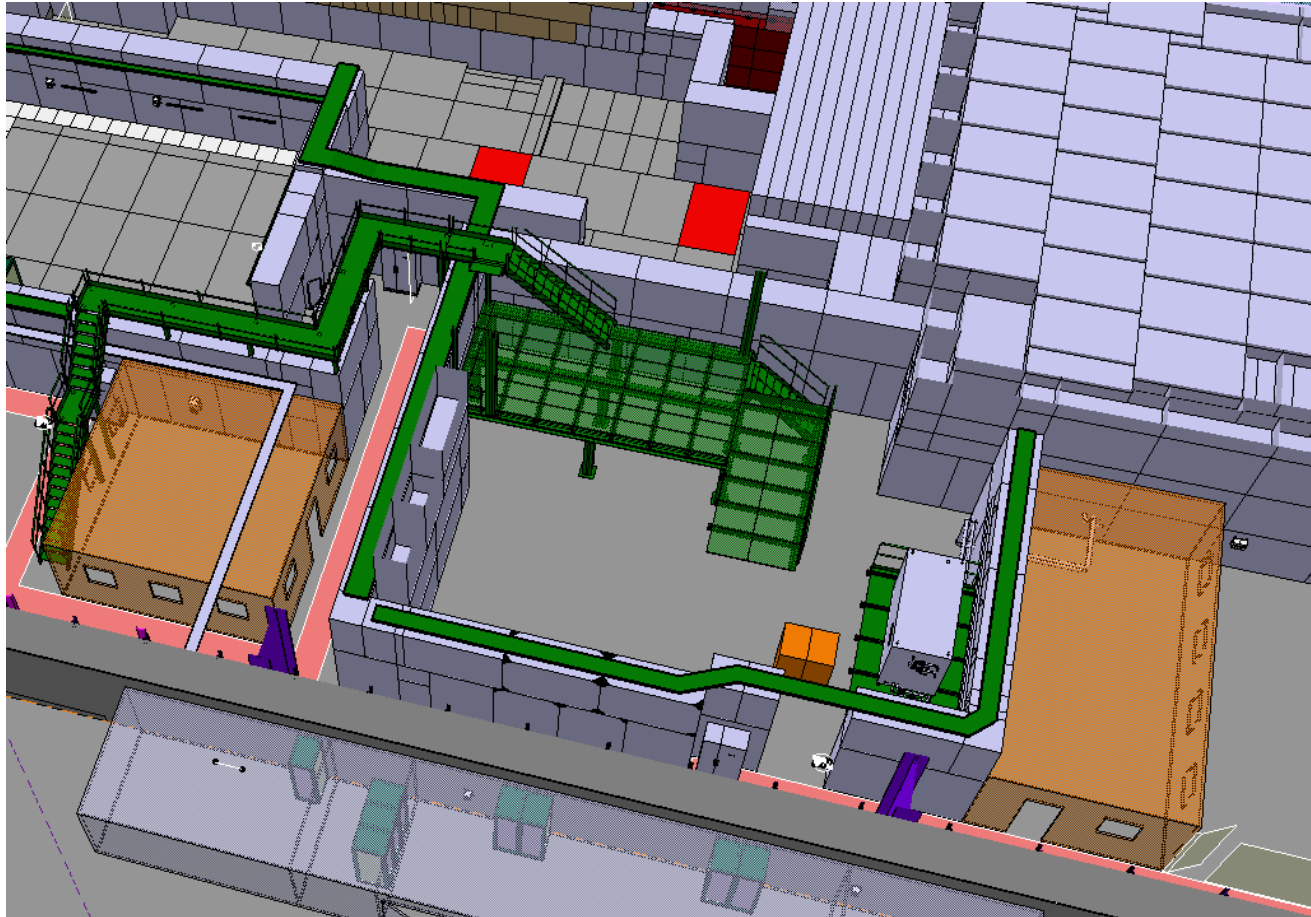
# Design and integration in b.157

## Cable ladders and switchboards integration (T09, T10)



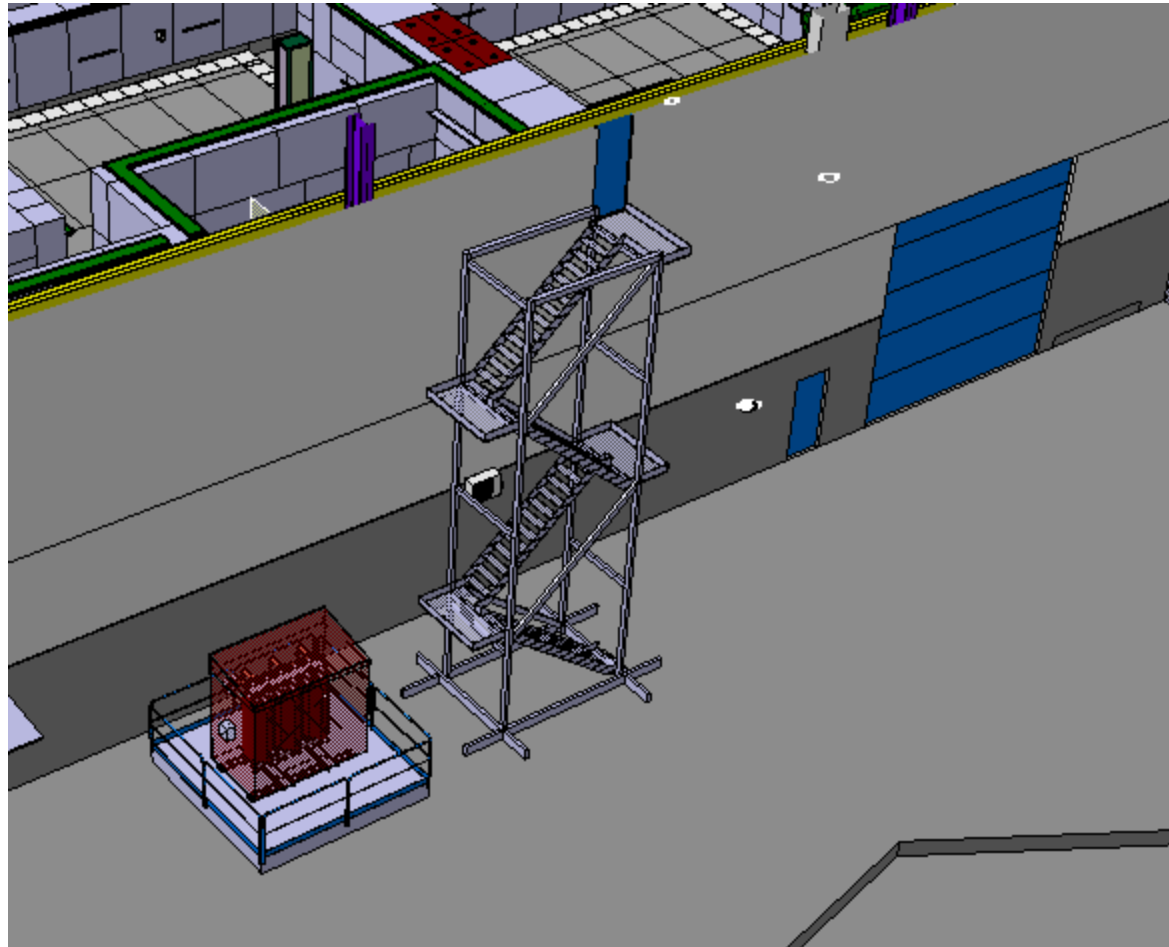
# Design and integration in b.157

## Cable ladders and switchboards integration (To8, T11)



# Design and integration in b.157

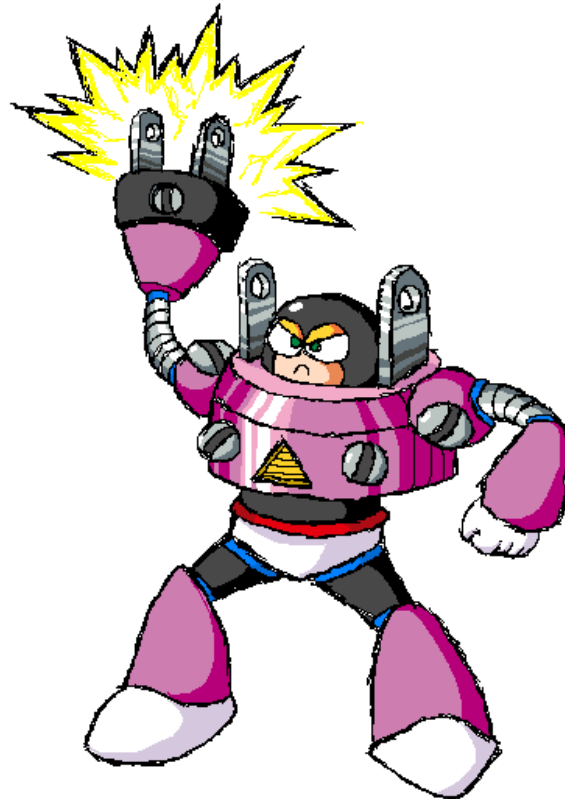
## Transformer integration



# On going

---

Some users as CV and IT are requesting to have AC supplies for their equipments in the coming months. These will be guaranteed despite the network will be renovated only the next year.





# Thanks for your attention !



## **EAST AREA RENOVATION**