



PLC Systems at Gemini Observatory

“Two telescopes, one observatory”

What is Gemini Observatory?

Twin 8.1-meter telescopes

Optimized for infrared astronomy

International Partners: USA, Canada,
Chile, Brasil, Argentina, Korea

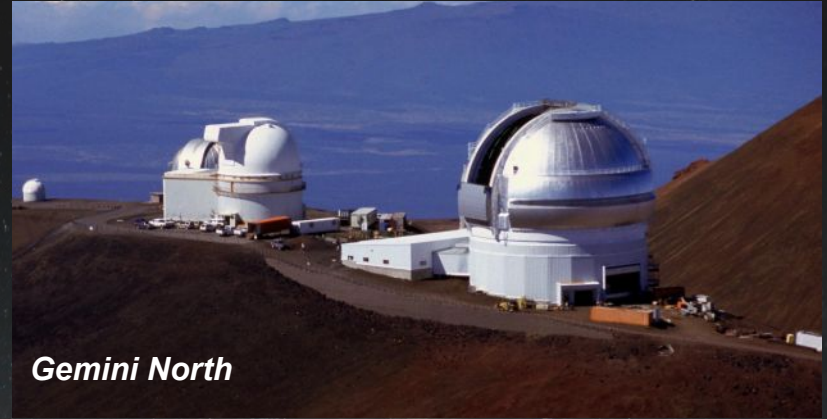


MINISTRY OF
SCIENCE, TECHNOLOGY,
INNOVATION AND COMMUNICATION



Ministerio de
Ciencia, Tecnología
e Innovación Productiva

Presidencia de la Nación



Gemini North



Gemini South

Where is Gemini located?

Hawaii, USA (Gemini North)

La Serena, Chile (Gemini South)

6,500 miles away

MK at 13,822 ft

CP at 8,930 ft



What PLC technology do we use?

Hardware

- ❖ Allen Bradley PLC 5 (1785)
- ❖ AB Remote I/O (1771)
- ❖ AB Flex I/O (1794-ASB/IE8..)
- ❖ Siemens S5

Software

- ❖ AB RSLogix 5
- ❖ Siemens S5

Communications

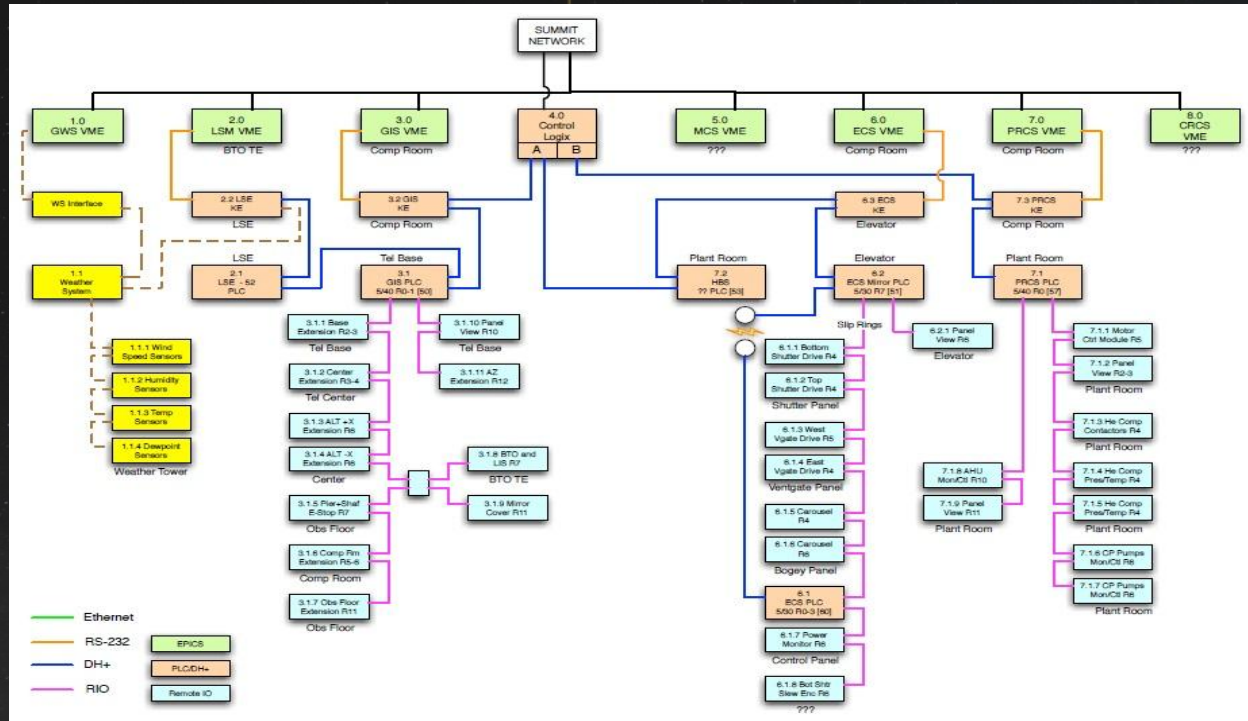
- ❖ Ethernet
- ❖ RS232
- ❖ DH +
- ❖ RIO

Where do we use PLC's?

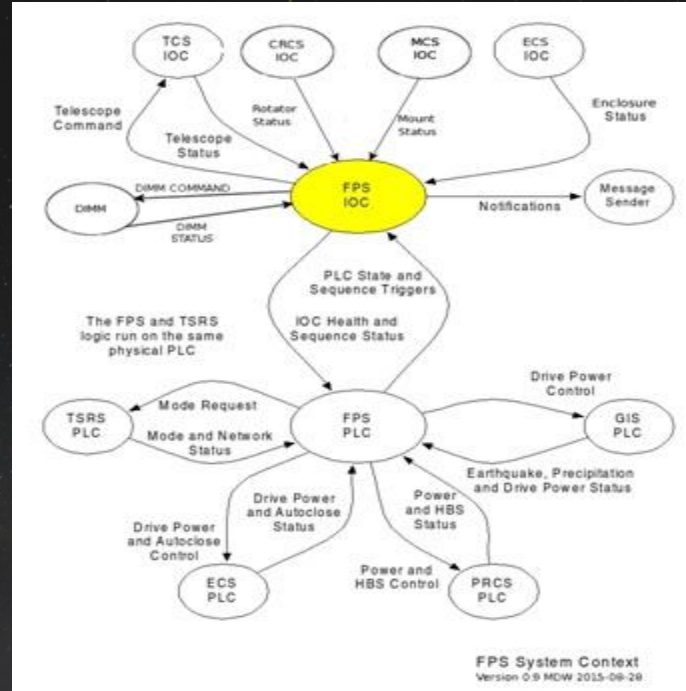
- ❖ Gemini Interlock System (GIS)
- ❖ Laser Interlock System (LIS)
- ❖ Facility Protection System (FPS)
- ❖ Base Facility Operations (BFO)
- ❖ Hydraulic Bearing System (HBS)
- ❖ Enclosure Control System (ECS)
- ❖ Plant Room
- ❖ Coating Chamber



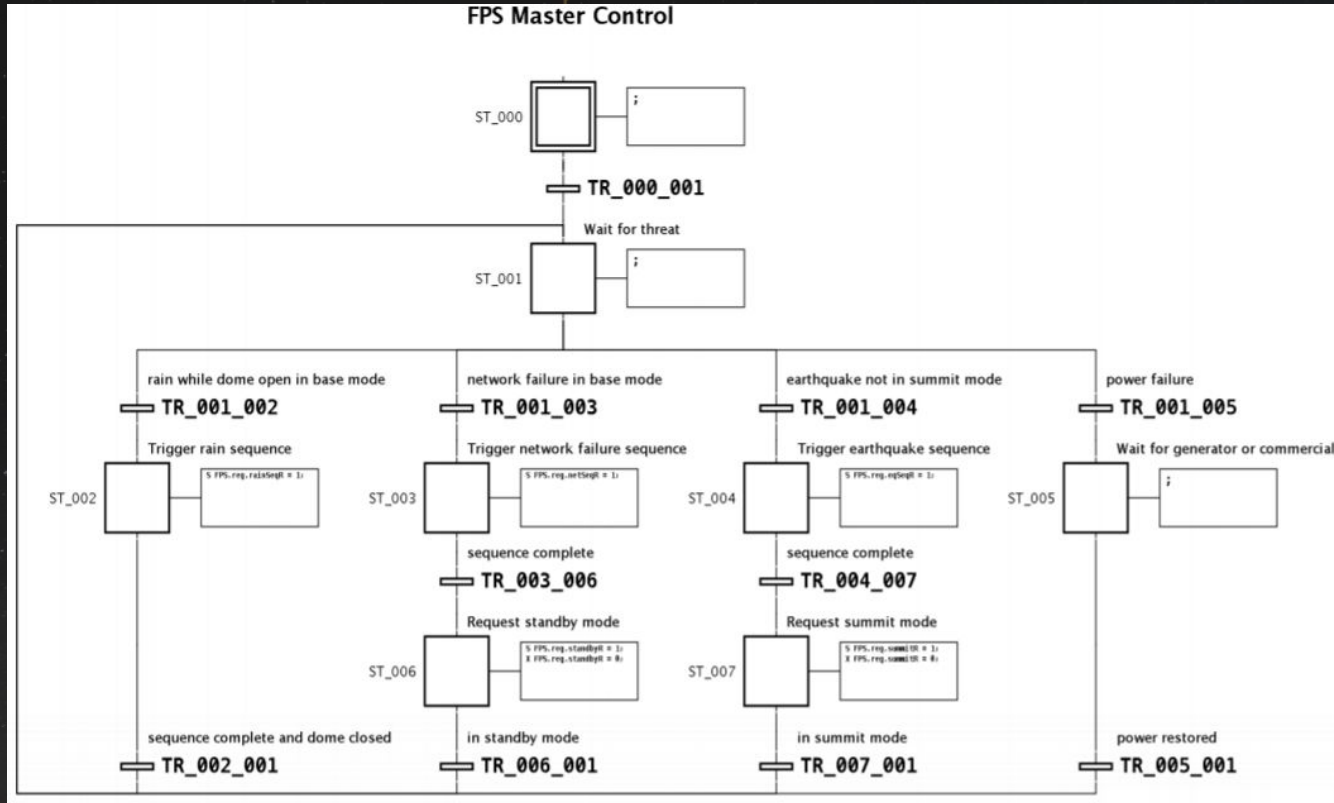
PLC Architecture Overview (>1000 I/O)



Facility Protection System application



Grafccets: State machine design



- ❖ Repository based in TortoiseSVN

PLC future at Gemini Observatory

- ❖ PLC upgrade/replacement is part of the Observatory Obsolescence project
- ❖ Not at the highest priority now. Possible in the next 3 years
- ❖ (For more information about Gemini Observatory check our website)

www.gemini.edu