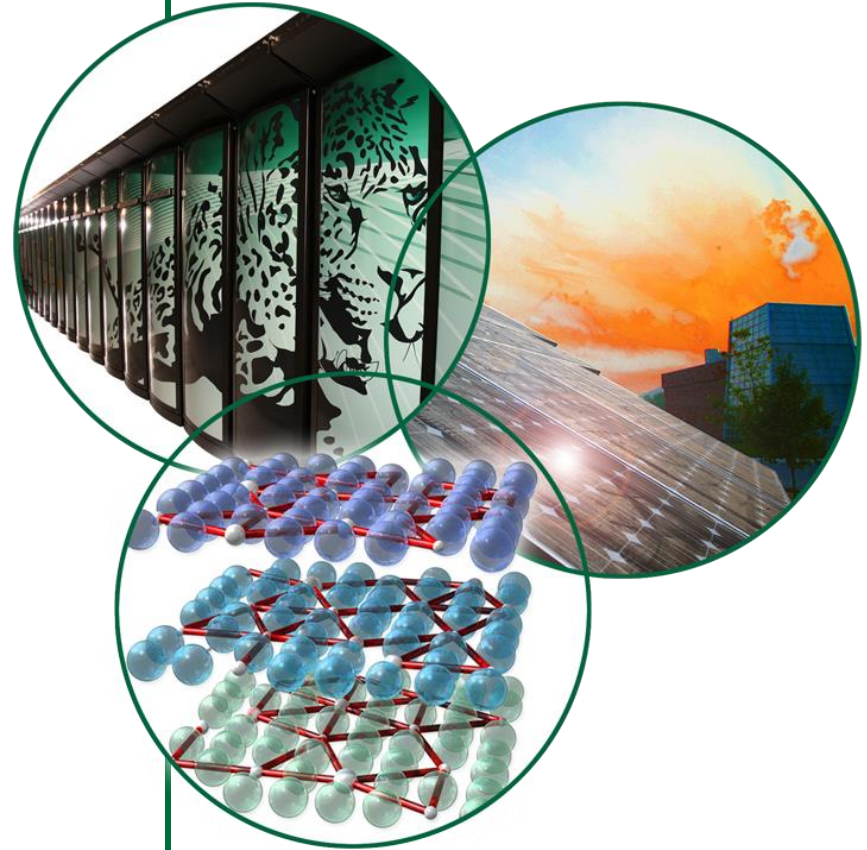


# PLC Application Management (ORNL)

ORNL: Spallation Neutron Source

Derrick Williams



# SNS uses Rockwell Allen-Bradley PLCs

- Over ~150 PLC processors in the Controls Group
- ControlLogix, CompactLogix, MicroLogix
  - RF systems
  - Vacuum
  - Water cooling
  - Cryomodules
  - Conventional Facilities
  - Personal Safety Systems
  - Beam Line Instruments
  - Test facilities
- Miscellaneous PLCs (vender supplied equipment)
- Several subsystems use PanelView along with EPICS for HMI
  - PanelView, PanelView Plus 6, PanelView Plus 7

# PLC code files in the wild west days

- **Files were stored in various locations**

- Servers on the accelerator network
- Servers on the enterprise network
- Some code in personal folders on machines
- PanelView code was worse
  - Runtime or archive files saved?
  - Several firmware versions
- Where are the communication configuration files?



- Several firmware versions running in the facility on PLC processors
- Several PanelView version in the field

# Reining in the herd

- **Central location to store PLC files**
  - First choice was server on accelerator network
    - PLC file naming and folder naming conventions were not established initially – this was a problem!
- **Standardize on PLC & PanelView firmware versions**
  - Updated communication configuration to the PLC firmware recommendations
  - Tried to standardized on PanelView firmware
    - Rockwell hardware binds you to certain firmware versions



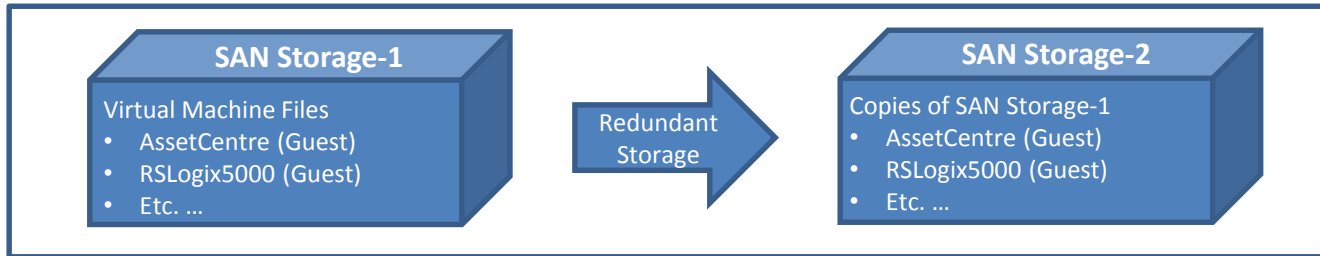
# Corralling the herd

- Once engineers agreed to PLC code file storage location it was time to find a system to manage all this code that we had corralled
- **SNS uses Rockwell's FactoryTalk AssetCentre**
  - Centralized tool for securing, managing, versioning, tracking and reporting assets



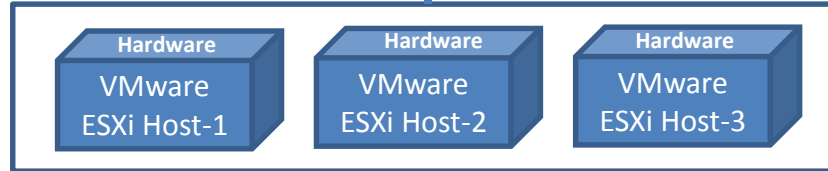
# AssetCentre architecture

## Network Storage Media



- All virtual machines reside on SAN hardware
- VM files get copied to redundant SAN hardware

## Hardware Machines



- ESXi Hosts are redundant
- ESXi Hosts execute VMs on SAN

Windows Domain Controller

- Virtual Windows Network Needed for Rockwell Software Tools



FT Activation Server  
FT Directory Services



**Data Sources**

- ControlLogix
- CompactLogix
- Etc.

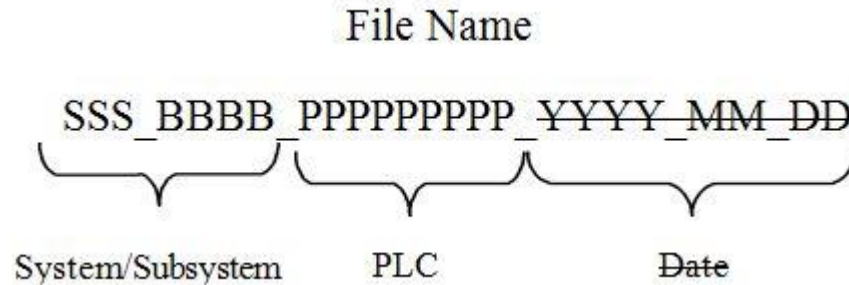


**Data Sources**

- ControlLogix
- CompactLogix
- Etc.

# Create PLC file naming standards

Next step was to create PLC file and folder naming conventions



**Figure 1: Format and Syntax**

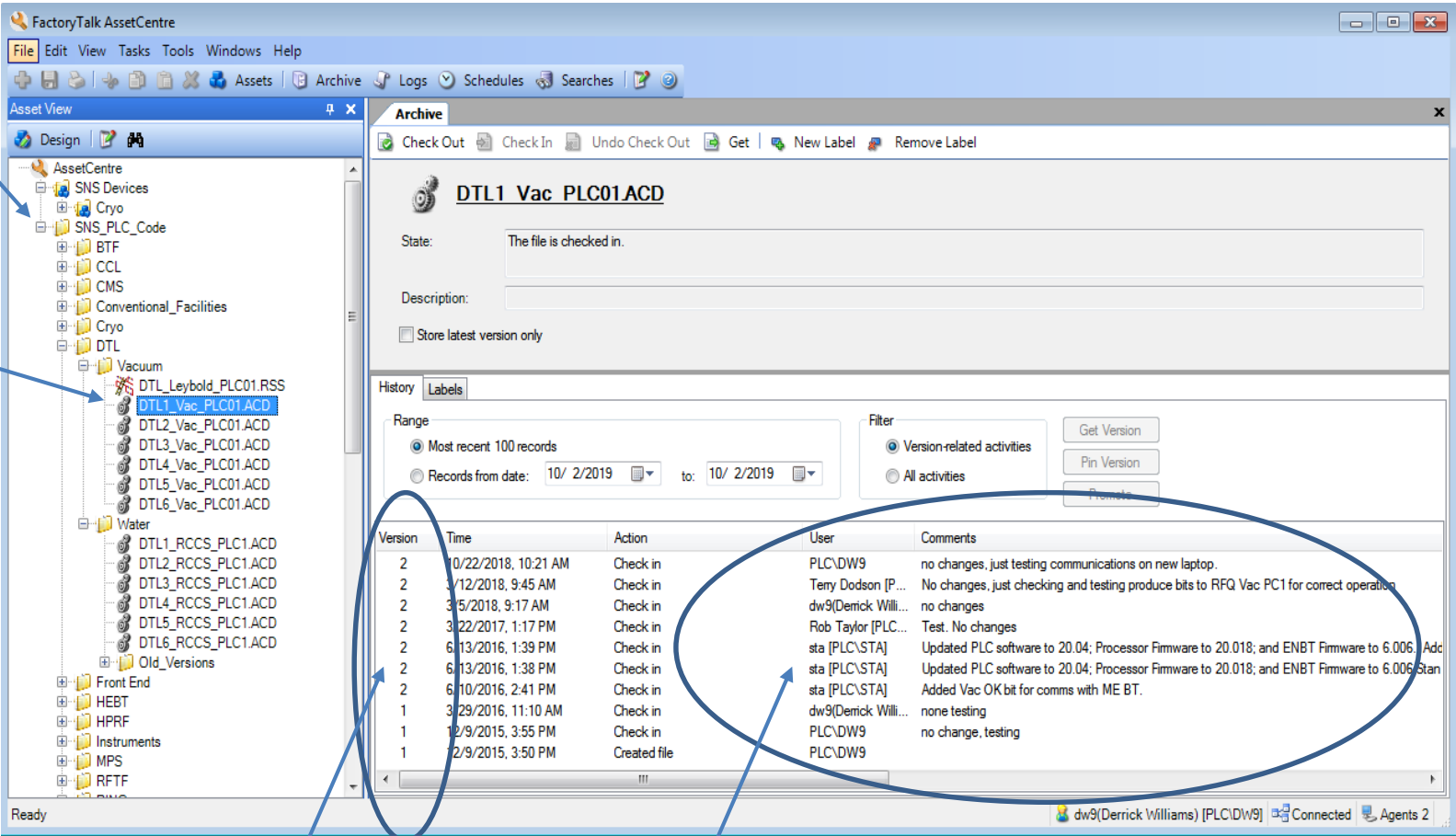
**Table 1. Name Components**

Naming Part	Description	Requirements	Controlled by
Format and Syntax	Entire name	Figure 1 and Syntax rules in Table 2	Project Engineer
SSS	System	Names in Table 3	Lead Engineer
BBBB	Subsystem	Names in Table 4	Lead Engineer
PPPPP	PLC Name	Name determine by engineer	Lead Engineer

# Example of folder structure in AssetCentre

Folders using naming convention that is meaningful e.g. system, subsystem

PLC code



Version of file

User and comments on any changes





# Accessing AssetCentre

- **Laptops dedicated to accelerator network only**
  - Laptops join the PLC domain with AssetCentre Client installed
  - Rockwell software tools are installed
- **Remote desktop into Windows VMs**
  - VMs use AssetCentre Client V5.00 Build:9 and Rockwell software applications
    - RSLogix5000 V13.04, 15.02, 16.04, 17.01, 18.02, 19.01, 20.04
    - Factory Talk Studio Machine Addition V8.1, Panel Builder 32 V3.83.01
    - RSNetworx 24.01 (ControlNet, DeviceNet)
    - RSLinks Professional 3.74

# Areas of struggle

- **Laptop machines**

- Maintaining several laptops with correct software versions
- Converting from 32bit OS to 64bit OS

- **Rockwell software management**

- Managing ~180 Rockwell licenses
  - Logix, ControlNet, DeviceNet, FactoryTalk ME, .....
- Managing different version of software

- **Dedicated person to manage AssetCentre**

- Maintaining architecture configuration
- Develop a plan to update to newer version of AssetCentre
- Utilizing more features: processor monitoring for code changes

# Discussion

We look forward to learning how others manage their PLC applications!!!

