

Compare Analysis between as-built geometry and Geant4 Description

Dr. Niko Tsutskiridze



Georgian Technical university

Status of Agreement AA366/10

Apr 25, 2019

To-Do list for WP2

To-Do list

Completed:

1. Flexible Chain in Sector 9

Current:

2. Feet and additional boxes

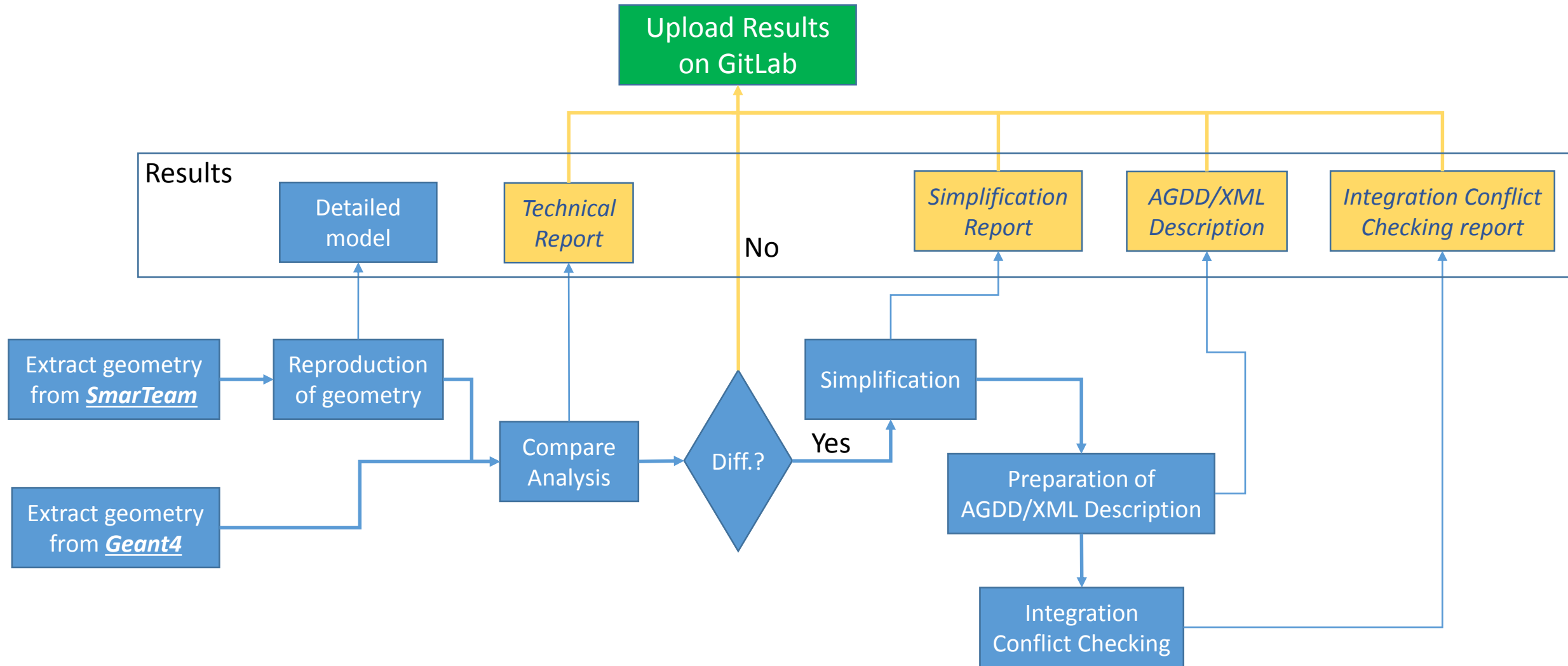
Upcoming:

3. CALO Services
4. Services of Magnet system in sector 7
5. JD Services in Sectors 7 and 9
6. Platforms in sectors 5 and 13

Deliverables:

1. *Technical report of compare analysis between as-built and geant4 description*
2. *Technical report of Simplification*
3. *AGDD/XML Description*
4. *Technical report of Integration Conflict Checking*

Life Cycle of Compare analyses

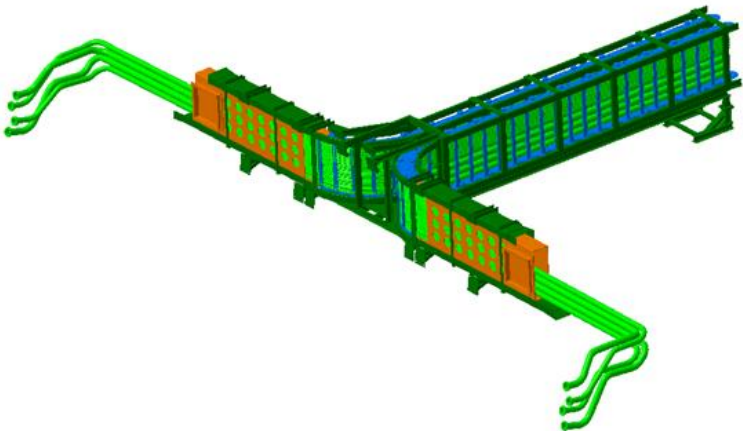


Completed. Compare analyses of *Flexible Chain (Sector 9)*

To-Do list

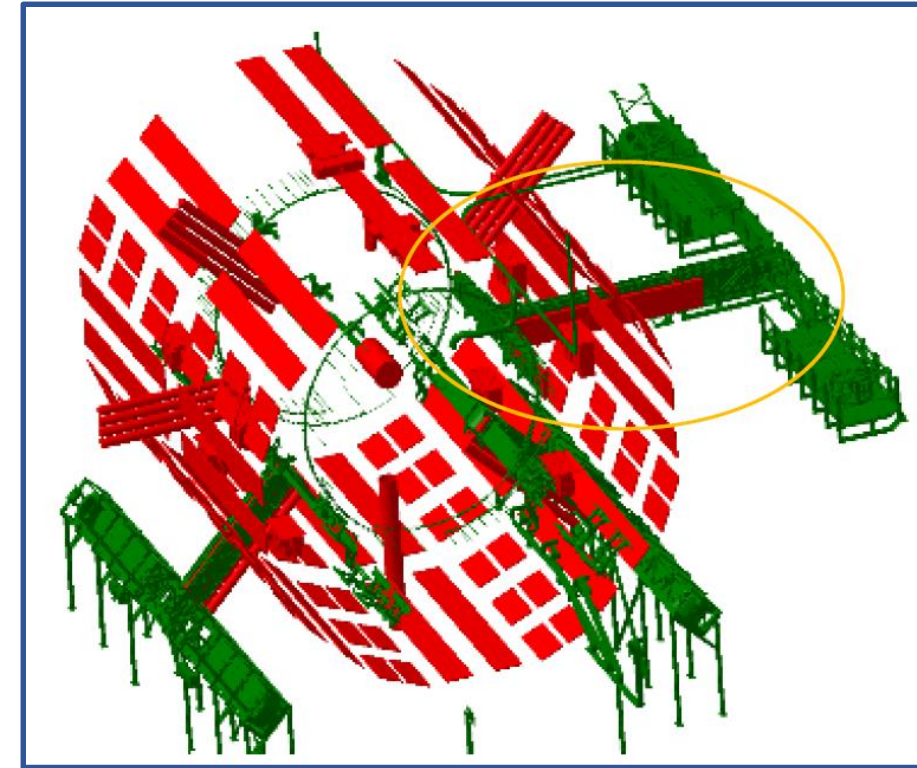
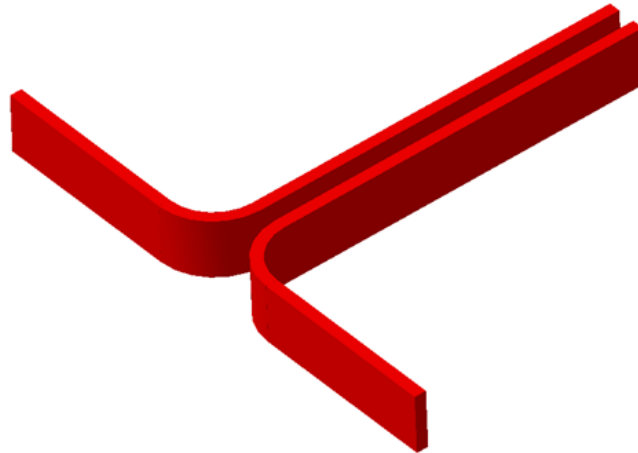
1. Flexible Chain in Sector 9
2. Feet and additional boxes
3. CALO Services
4. Services of Magnet system in sector 7
5. JD Services in Sectors 7 and 9
6. Platforms in sectors 5 and 13

CATIA



VS

Geant4



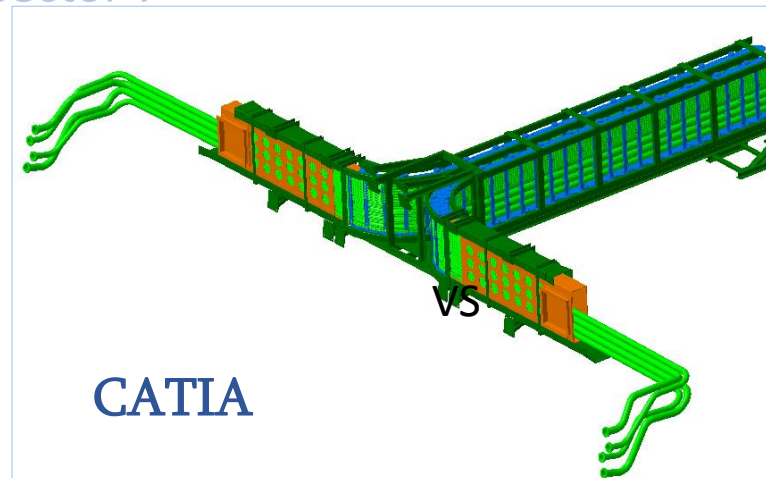
More than 3 months for reproduction of detailed model

Completed. Compare analyses of *Flexible Chain (Sector 9)*

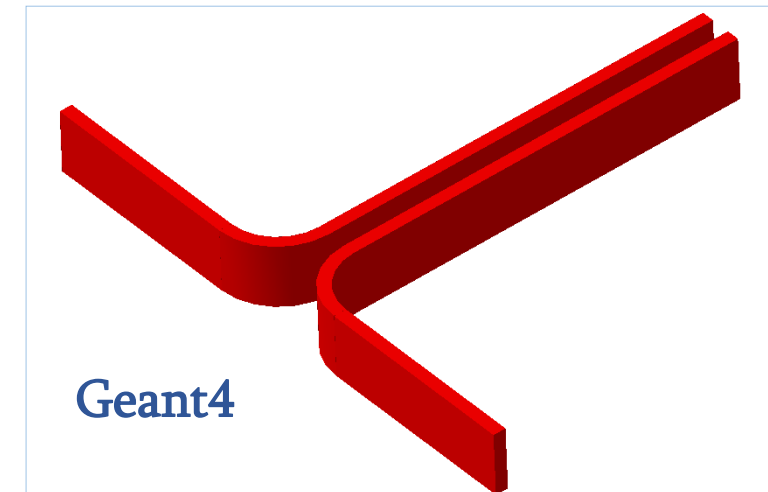
To-Do list

1. Flexible Chain in Sector 9
2. Feet and additional boxes
3. CALO Services
4. Services of Magnet system in sector 7
5. JD Services in Sectors 7 and 9
6. Platforms in sectors 5 and 13

	CATIA	Geant	Difference
1 Support	1'968 kgs	11'877 kgs	83.4%
2 Drag Chain	1'608 kgs	- kgs	- 100%
3 Towing Arm	680 kgs	- kgs	- 100%
4 Pipes	172 kgs	- kgs	- 100%
5 Cables	825 kgs	- kgs	- 100%
Total	5'253	11'877	97%



Volume (m ³)	0.6456
Mass (kg)	5'253
Material	Stainless Steel/Cooper
Density (kg/m ³)	8'000/8960

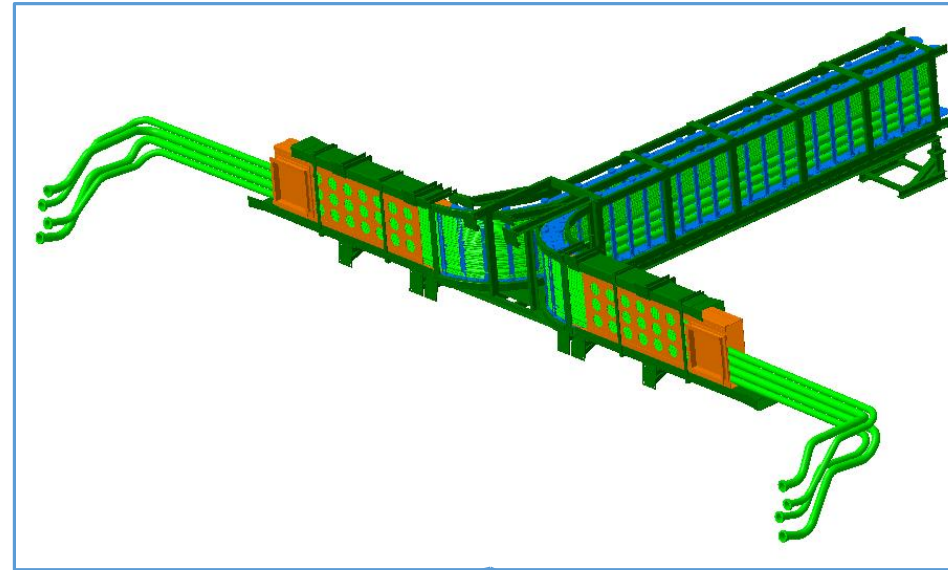


Volume (m ³)	4.399
Mass (kg)	11'877.3
Material	Aluminum
Density (kg/m ³)	2'700

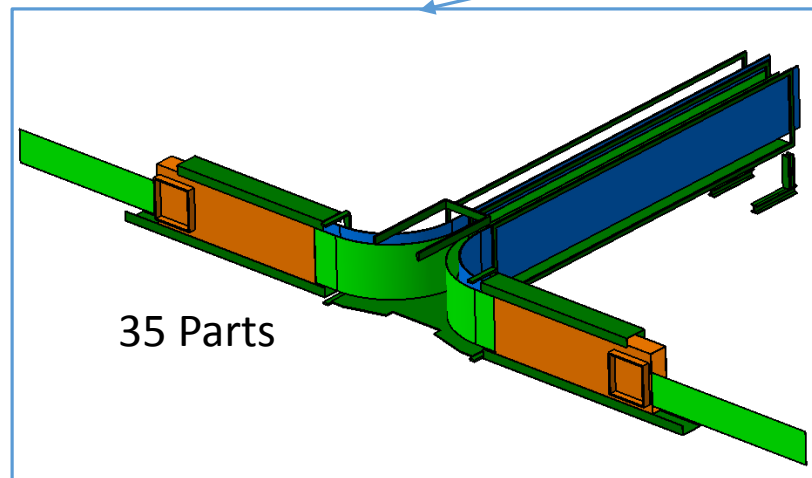
Completed. Compare analyses of *Flexible Chain (Sector 9)*

To-Do list

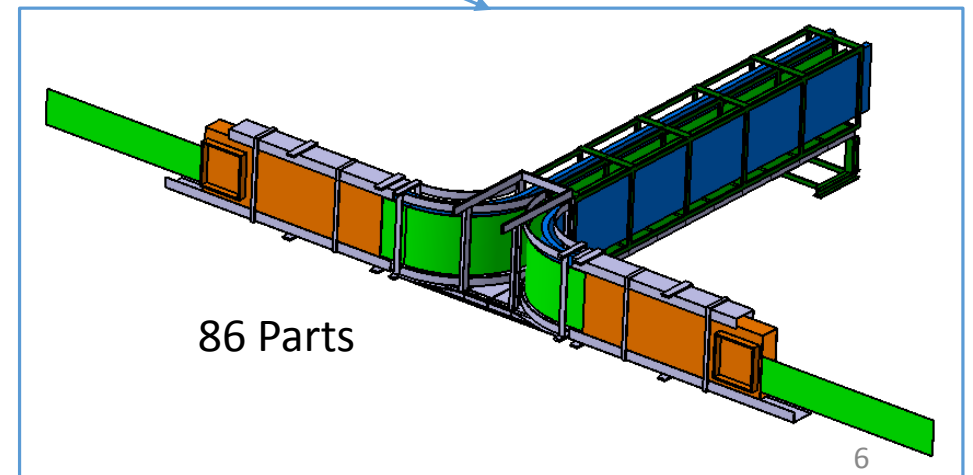
1. Flexible Chain in Sector 9
2. Feet and additional boxes
3. CALO Services
4. Services of Magnet system in sector 7
5. JD Services in Sectors 7 and 9
6. Platforms in sectors 5 and 13



Version I



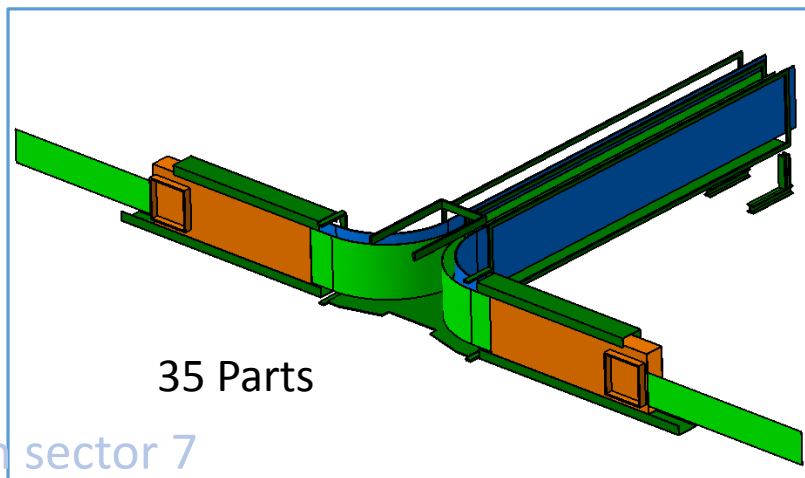
Version II



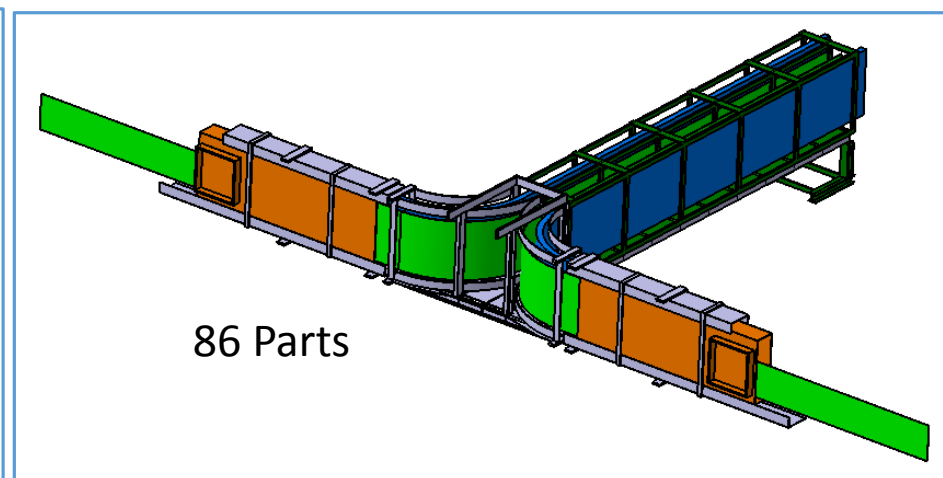
Completed. Compare analyses of *Flexible Chain (Sector 9)*

To-Do list

1. Flexible Chain in Sector 9
2. Feet and additional boxes
3. CALO Services
4. Services of Magnet system in sector 7
5. JD Services in Sectors 7 and 9
6. Platforms in sectors 5 and 13



Version I



Version II

The results were reviewed at Muon Software meeting in March

```
box name="Support_SideFrPl2_Cut" material="ShieldSteel" X_Y_Z=" 431.5; 1000.; 80." />
subtraction name="Support_SideFrPl2" >
  <posXYZ volume="Support_SideFrPl2_Box" />
  <posXYZ volume="Support_SideFrPl2_Cut" X_Y_Z="27.; 0.; 0." rot=" 0.; 0.; 0."/>
/subtraction>

box name="Support_SideFrPl3_Box" material="ShieldSteel" X_Y_Z=" 1252.; 100.; 708." />
box name="Support_SideFrPl3_Cut" material="ShieldSteel" X_Y_Z=" 1252.; 110.; 650." />

subtraction name="Support_SideFrPl3" >
  <posXYZ volume="Support_SideFrPl3_Box" />
  <posXYZ volume="Support_SideFrPl3_Cut" X_Y_Z="29.; 0.; 0." rot=" 0.; 0.; 0."/>
/subtraction>

composition name="FCH_Support" >
  <posXYZ volume="Support_Ma" X_Y_Z="0.; 0.; 0." rot="0.; 0.; 0." />
  <posXYZ volume="FCH_SupportLeg" X_Y_Z="-2283.; -1075.31; 333.5" rot="0.; 0.; 0." />
  <posXYZ volume="FCH_SupportLeg" X_Y_Z="-2283.; -1075.31; -333.5" rot="0.; 0.; 0." />
  <posXYZ volume="Support_SidePl" X_Y_Z="3636.8; -439.8; 2825.25" rot="0.; 180.; 0." />
  <posXYZ volume="Support_SidePl" X_Y_Z="3636.8; -439.8; -2825.25" rot="0.; 0.; 0." />
  <posXYZ volume="Support_SideFrPl1" X_Y_Z="3241.3; -500.; 0." rot="0.; 90.; 90." />
  <posXYZ volume="Support_SideFrPl2" X_Y_Z="3668.55; -2.6; 1156.51" rot="0.; 0.; 0." />
  <posXYZ volume="Support_SideFrPl2" X_Y_Z="3668.55; -2.6; -1156.51" rot="0.; 0.; 0." />
  <posXYZ volume="Support_SideFrPl3" X_Y_Z="3263.3; 576.92; 0." rot="0.; 0.; 0." />
/composition>
!-- End Support -->
```

```
union name="FCH_Cables" /
  <posXYZ volume="Cable_Main" X_Y_Z="0.; 0.; 0." rot="0.; 0.; 0." />
  <posXYZ volume="Cable_Tube" X_Y_Z="2712.5; 0.; 1016.65" rot=" 270.; 0.; 0." />
  <posXYZ volume="Cable_SmMain" X_Y_Z="3729.15; 0.; 2266.65" />
/union>
!-- End Cables -->

!-- Support -->
<!-- Central Support -->
box name="Support_MaBox" material="ShieldSteel" X_Y_Z=" 5230.; 1005.; 750." />
box name="Support_MaCutBox1" material="ShieldSteel" X_Y_Z=" 5240.; 1005.; 336.9" />
box name="Support_MaCutBox2" material="ShieldSteel" X_Y_Z=" 986.; 895.; 760." />

subtraction name="Support_Ma" >
  <posXYZ volume="Support_MaBox" />
  <posXYZ volume="Support_MaCutBox1" X_Y_Z="0.; 5.; -181.15" rot=" 0.; 0.; 0."/>
  <posXYZ volume="Support_MaCutBox1" X_Y_Z="0.; 5.; 181.15" rot=" 0.; 0.; 0."/>
  <posXYZ volume="Support_MaCutBox2" />
  <posXYZ volume="Support_MaCutBox2" X_Y_Z="1036.; 0.; 0." rot=" 0.; 0.; 0."/>
  <posXYZ volume="Support_MaCutBox2" X_Y_Z="-1036.; 0.; 0." rot=" 0.; 0.; 0."/>
  <posXYZ volume="Support_MaCutBox2" X_Y_Z="2072.; 0.; 0." rot=" 0.; 0.; 0."/>
  <posXYZ volume="Support_MaCutBox2" X_Y_Z="-2072.; 0.; 0." rot=" 0.; 0.; 0."/>
/subtraction>

box name="Support_Ma_TopPlate" material="ShieldSteel" X_Y_Z=" 100.; 11.9; 750." />

composition name="FCH_Support_Pt1" >
  <posXYZ volume="Support_Ma" />
  <posXYZ volume="Support_Ma_TopPlate" X_Y_Z="2535.; 508.5; 0." rot="0.; 0.; 0." />
  <posXYZ volume="Support_Ma_TopPlate" X_Y_Z="1554.; 508.5; 0." rot="0.; 0.; 0." />
  <posXYZ volume="Support_Ma_TopPlate" X_Y_Z="518.; 508.5; 0." rot="0.; 0.; 0." />
  <posXYZ volume="Support_Ma_TopPlate" X_Y_Z="-518.; 508.5; 0." rot="0.; 0.; 0." />
  <posXYZ volume="Support_Ma_TopPlate" X_Y_Z="-1554.; 508.5; 0." rot="0.; 0.; 0." />
  <posXYZ volume="Support_Ma_TopPlate" X_Y_Z="-2535.; 508.5; 0." rot="0.; 0.; 0." />
/composition>
```

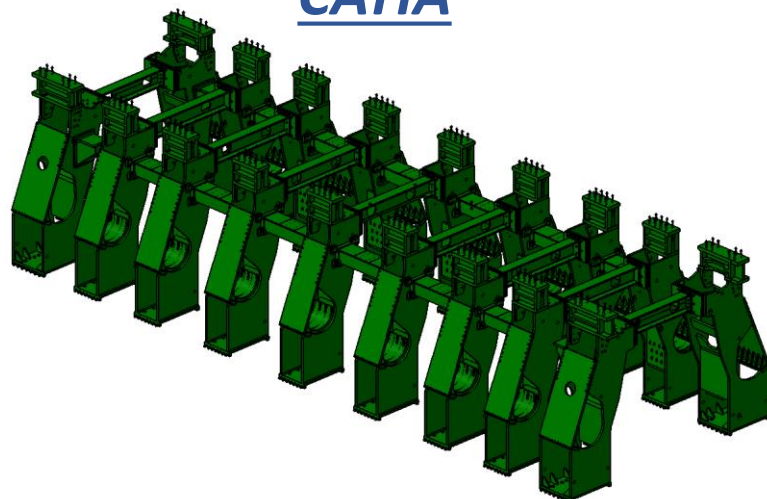
Current. Compare analyses of *Feet and additional boxes*

To-Do list

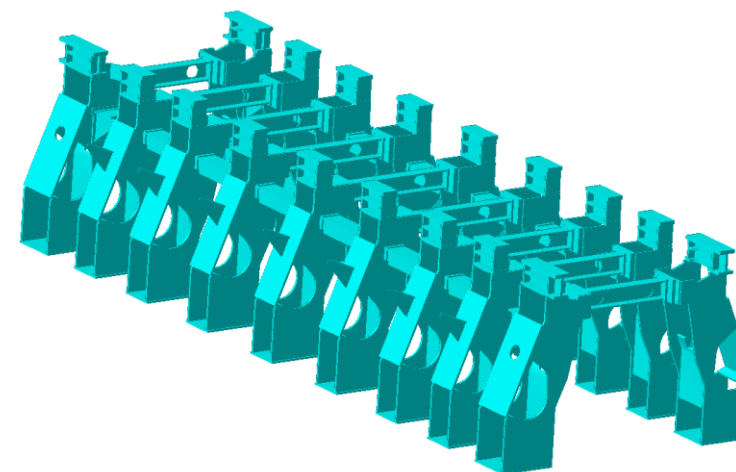
1. Flexible Chain in Sector 9
2. Feet and additional boxes
3. CALO Services
4. Services of Magnet system in sector 7
5. JD Services in Sectors 7 and 9
6. Platforms in sectors 5 and 13

		CATIA	Geant4	Difference
1	Standard Foot	213'248 kgs	186'401 kgs	-12.6 %
2	Extremity Foot	66'864 kgs	58'647 kgs	-12.3 %
3	Rail Support	31'944 kgs	31'448 kgs	-1.6 %
4	Extremity Rail Support	11'040 kgs	10'900 kgs	-1.3 %
5	Girder	24'096 kgs	18'305 kgs	-24 %
6	Extremity Girder	4'576 kgs	4'430 kgs	-3.2 %
7	FEET_Standard Strut	8'523.9 kgs	16'611 kgs	+48.7 %
8	FEET_Extremity Strut	24'48.9 kgs	4'427.5 kgs	+44.7 %
9	Bolts	3'912 kgs	- kgs	- 100 %
10	Slanted ConnPlate Bracket	- kgs	138 kgs	+ 100 %
	Total	366'652 kgs	331'307 kgs	34.84 %

CATIA



Geant4

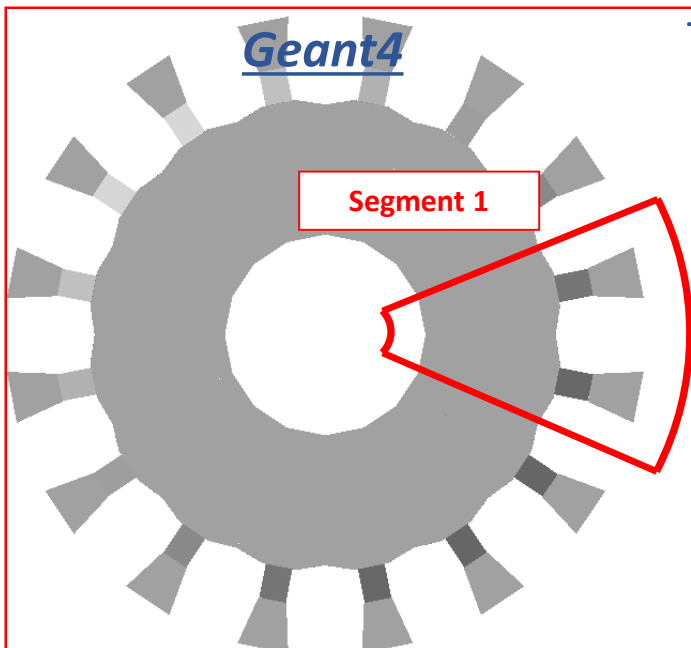
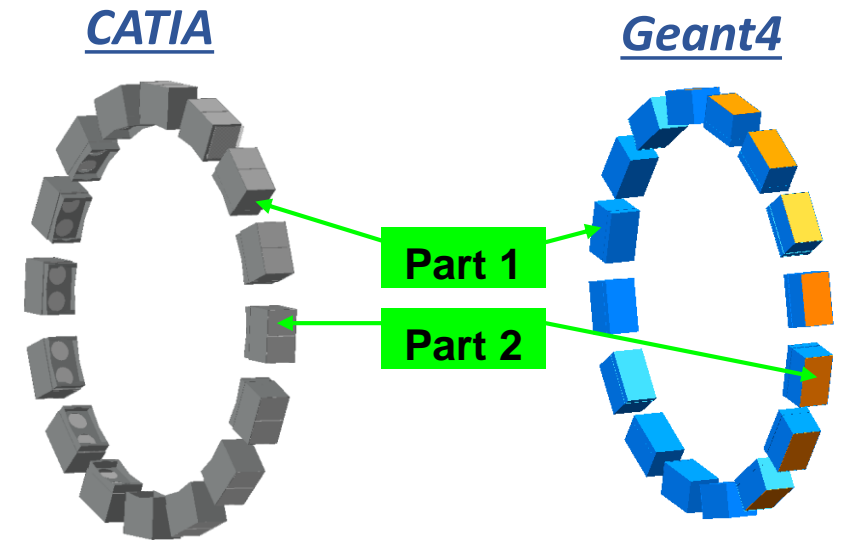


Completed/Upcoming. Compare analyses of *CALO Services*

To-Do list

1. Flexible Chain in Sector 9
2. Feet and additional boxes
3. CALO Services
4. Services of Magnet system in sector 7
5. JD Services in Sectors 7 and 9
6. Platforms in sectors 5 and 13

El. Boxes	XML	CATIA	Difference
<i>both side</i>	<i>Weight kg</i>	<i>weight kg</i>	<i>weight %</i>
Part1	1037	778	33%
Part2	4623	4985	-7%
<i>Total</i>	<i>5660</i>	<i>5763</i>	



The results were reviewed at Muon Software meeting in March

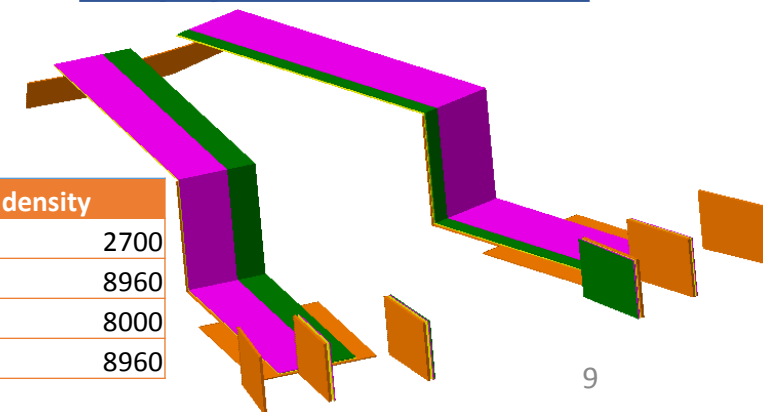
Gap Region

Segment 1	Volume	Wieght kg	Material	density
Service part 1	0.18	63.0	LArServices8	350
Service part 2	0.258	9.0	LArServices17	35
Supports	0.014	38.6	Aluminum	2700
Total	0.45	110.6		

Difference 37%

Segment 1	Volume	Wieght kg	Material	density
Supports	0.014	38.6	Aluminum	2700
Cables	0.005	44.8	Copper	8960
Pipes 1	0.002	17.0	Stainles steel	8000
Pipes 2	0.006	51.4	Cooper	8960
Total	0.027	151.8		

Simplified CATIA model

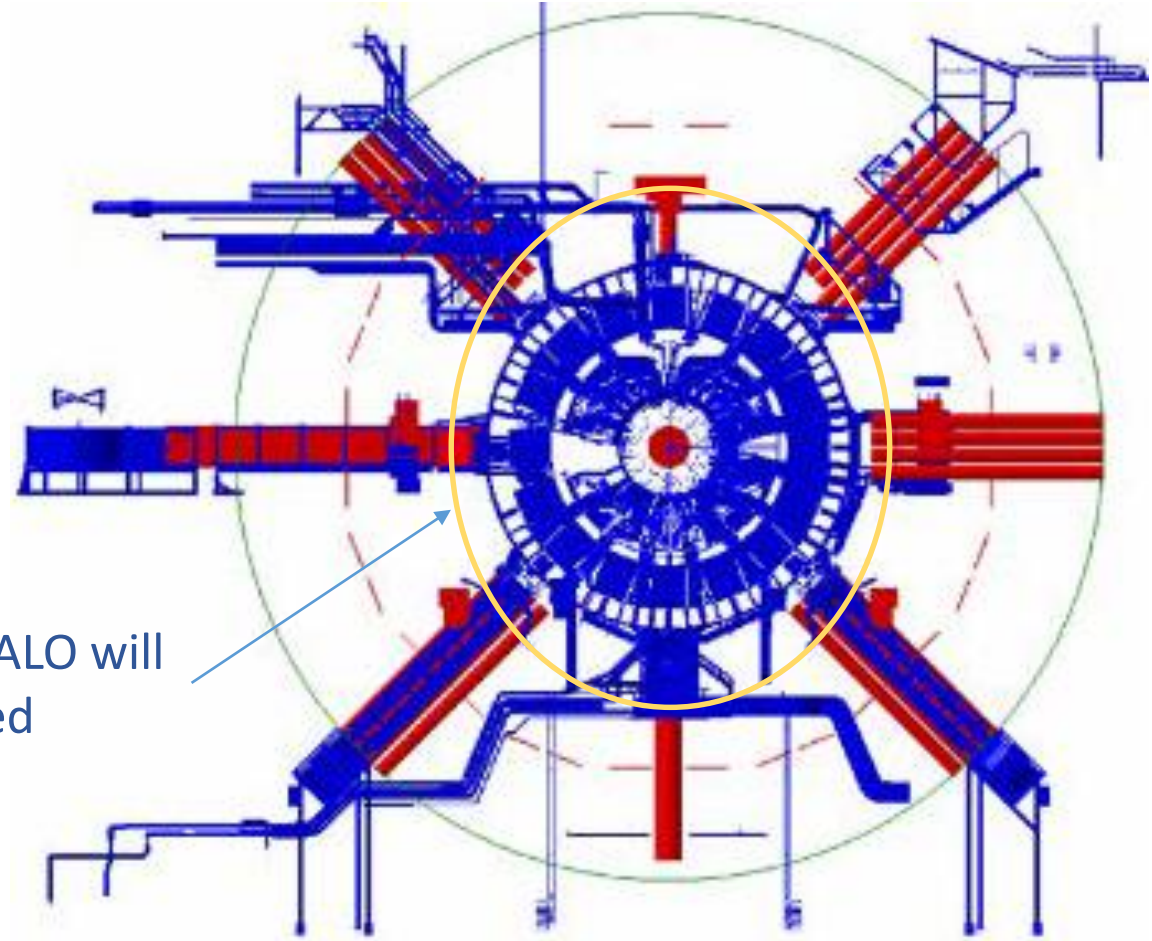


Completed/Upcoming. Compare analyses of *CALO Services*

To-Do list

1. Flexible Chain in Sector 9
2. Feet and additional boxes
3. CALO Services
4. Services of Magnet system in sector 7
5. JD Services in Sectors 7 and 9
6. Platforms in sectors 5 and 13

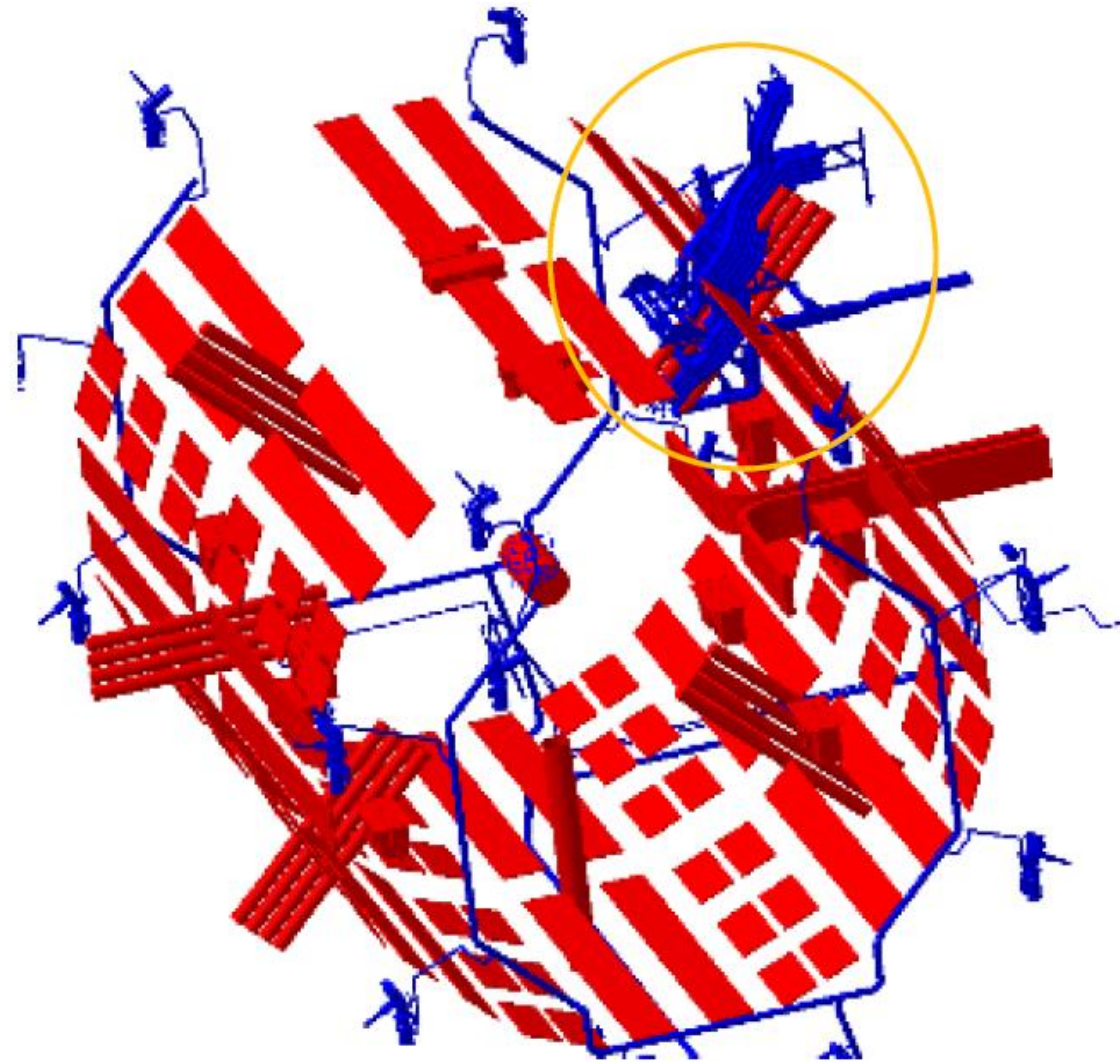
Other Services of CALO will
be investigated



Upcoming. Services of Magnet system in sector 7

To-Do list

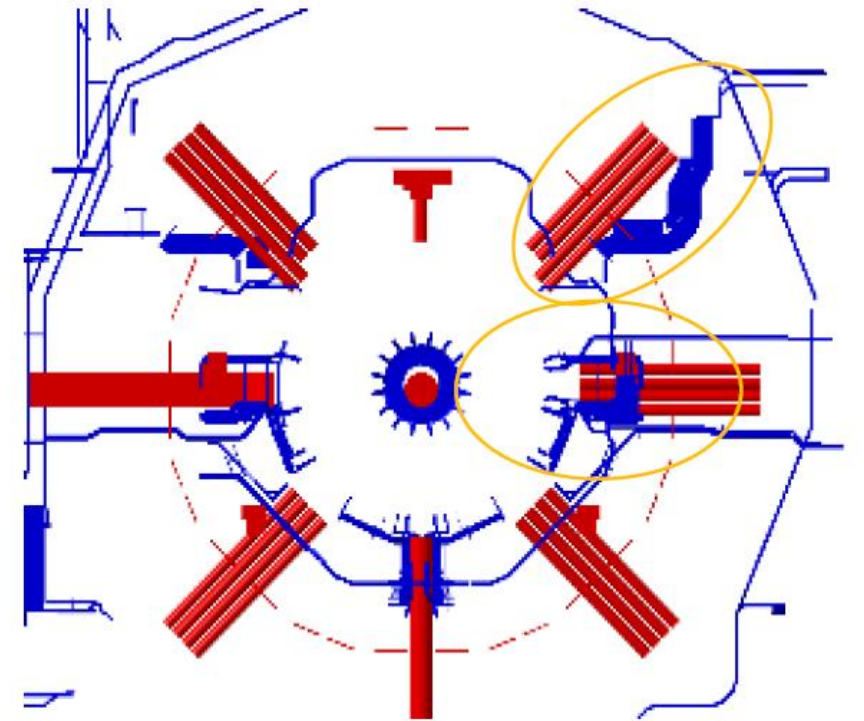
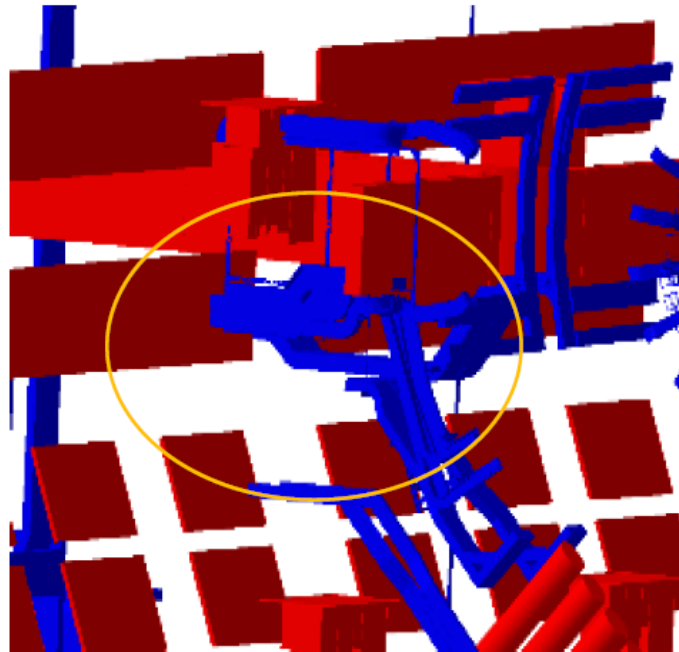
1. Flexible Chain in Sector 9
2. Feet and additional boxes
3. CALO Services
4. Services of Magnet system in sector 7
5. JD Services in Sectors 7 and 9
6. Platforms in sectors 5 and 13



Upcoming. *JD Services in Sectors 7 and 9*

To-Do list

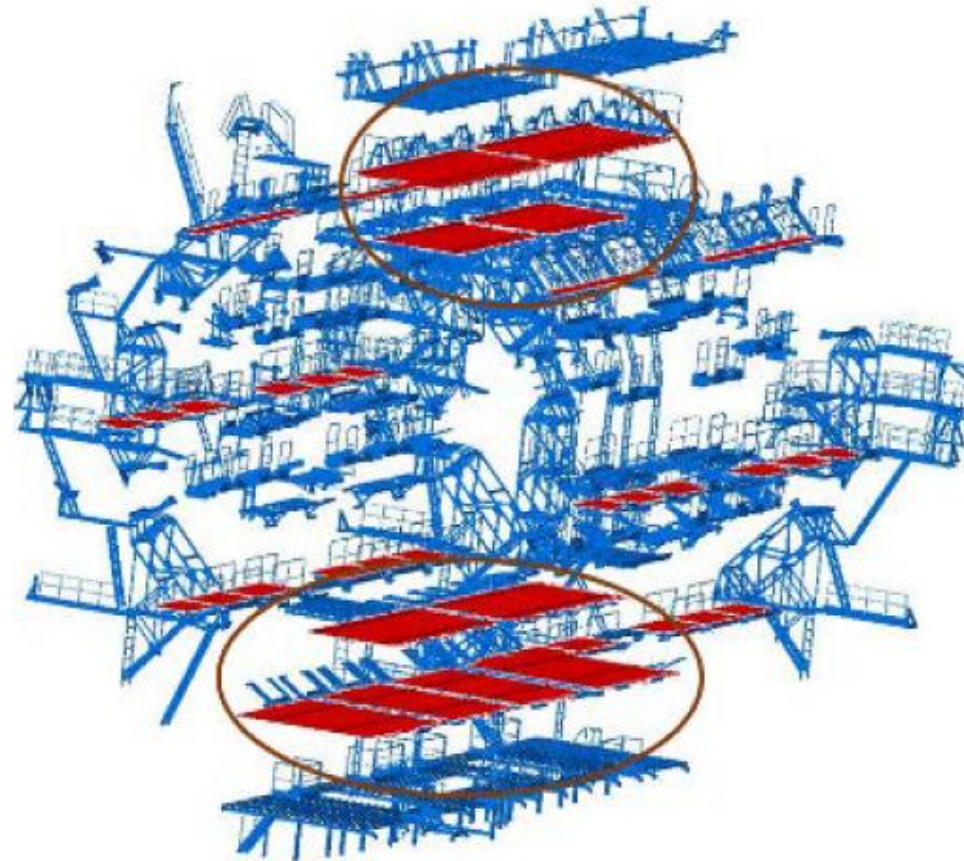
1. Flexible Chain in Sector 9
2. Feet and additional boxes
3. CALO Services
4. Services of Magnet system in sector 7
5. JD Services in Sectors 7 and 9
6. Platforms in sectors 5 and 13



Upcoming. Platforms in sectors 5 and 13

To-Do list

1. Flexible Chain in Sector 9
2. Feet and additional boxes
3. CALO Services
4. Services of Magnet system in sector 7
5. JD Services in Sectors 7 and 9
6. Platforms in sectors 5 and 13



Upcoming. Compare analysis of Active Parts of ATLAS Detector

To-Do list

1. Inner Detector -> Pixel Detector
SCT Detector
TRT
2. Calorimeters -> Large Calorimeter
Tile Calorimeter
3. Muon Chambers -> Barrel Region – 3 Layers
ECT Region – 4 Layers

To-Do list

Completed:

1. Flexible Chain in Sector 9

Current:

2. Feet and additional boxes

Upcoming:

3. CALO Services
4. Services of Magnet system in sector 7
5. JD Services in Sectors 7 and 9
6. Platforms in sectors 5 and 13

Manpower in Georgian Team:

1.5FTE - CATIA designers, programmers

Thank You for Your Attention!

მადლობთ ყურადღებისათვის!