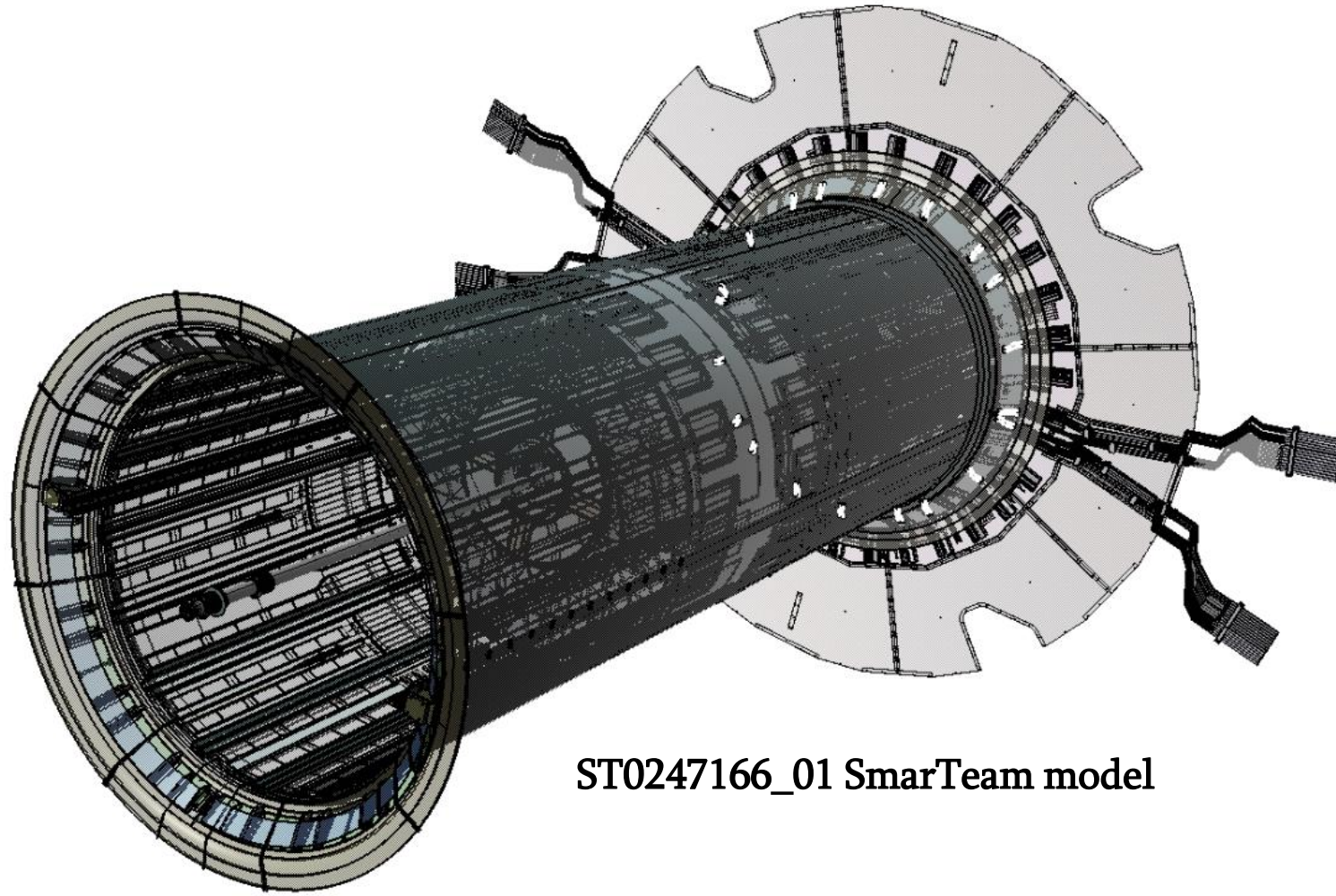


Development of Reference Geometry DB of ATLAS Detector

Reproduction of Inner Detector

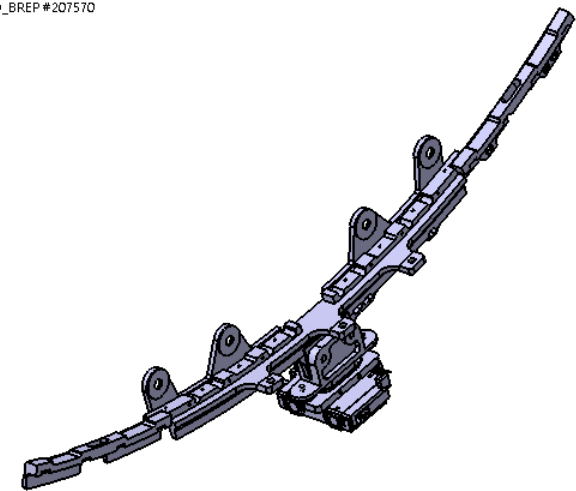
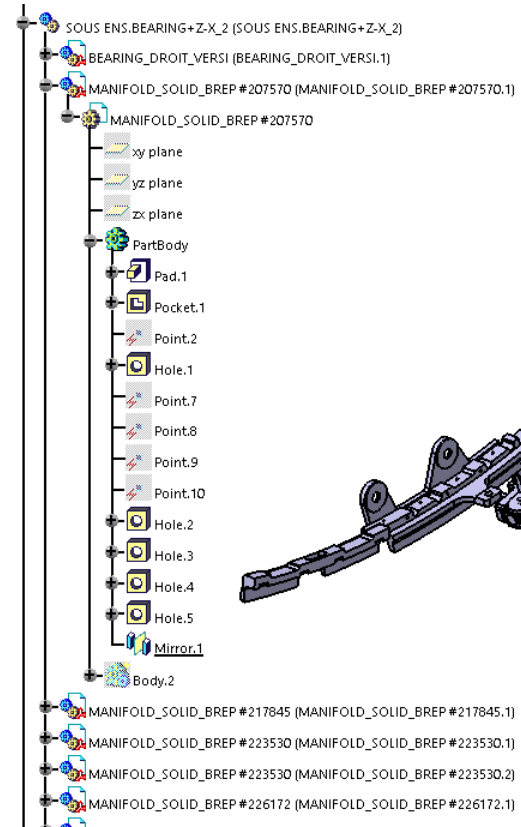
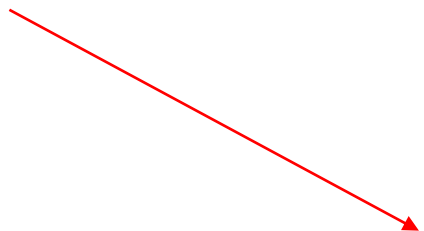
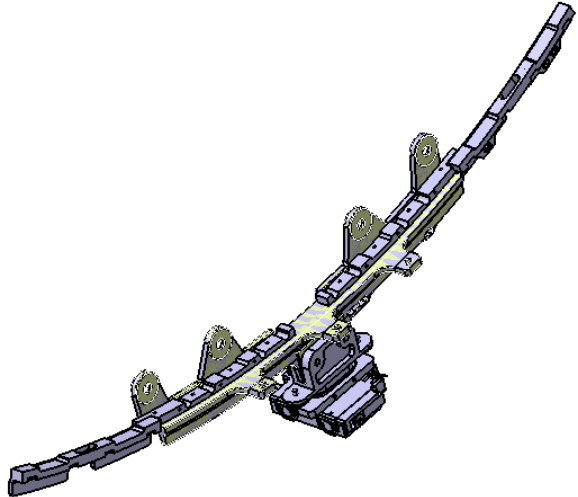
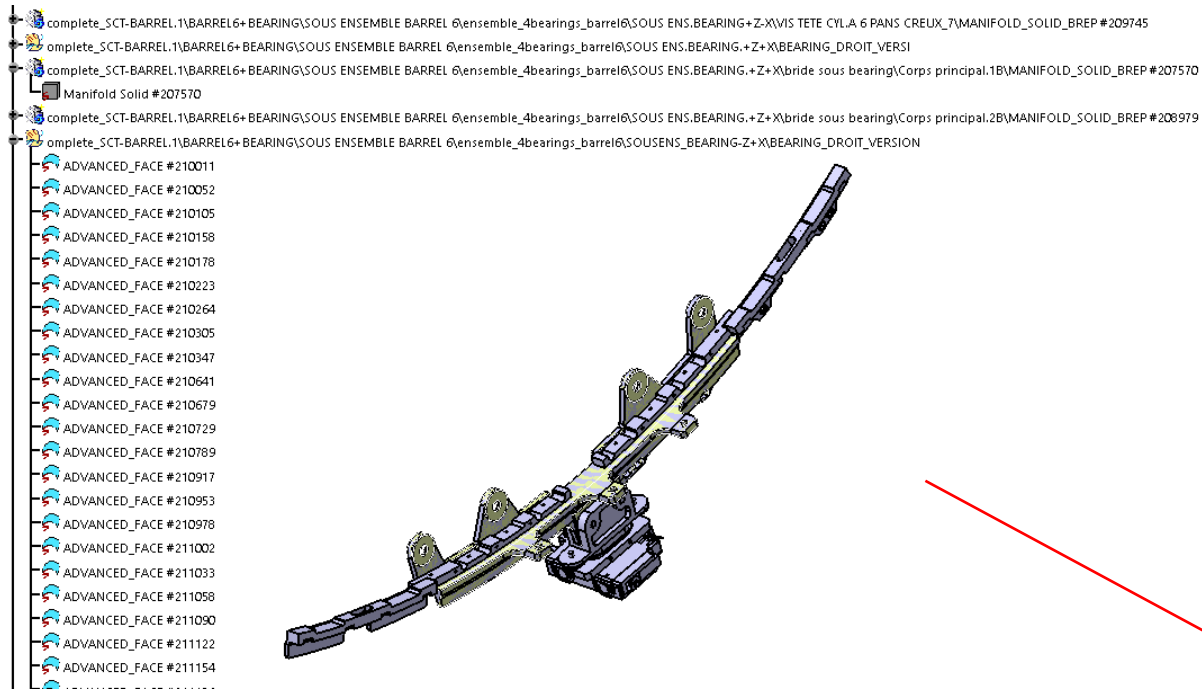
Kobakhidze Shota

Inner detector



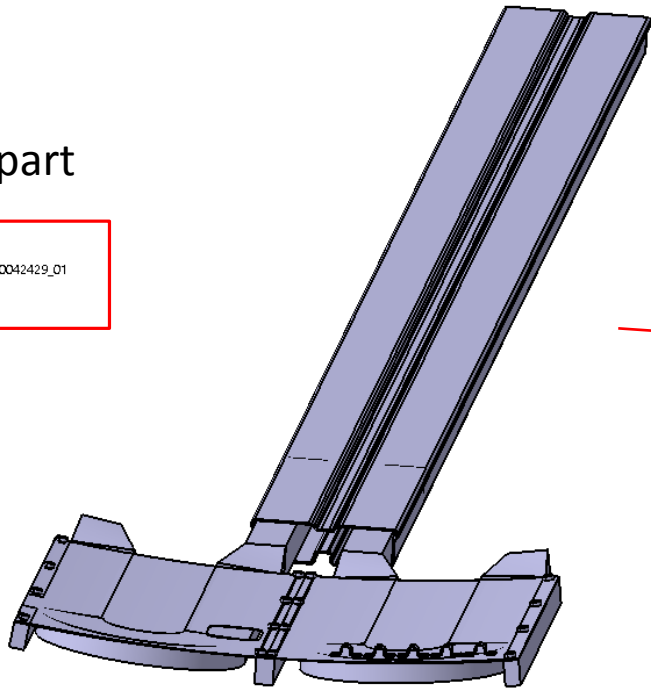
ST0247166_01 SmarTeam model

Making assembly editable

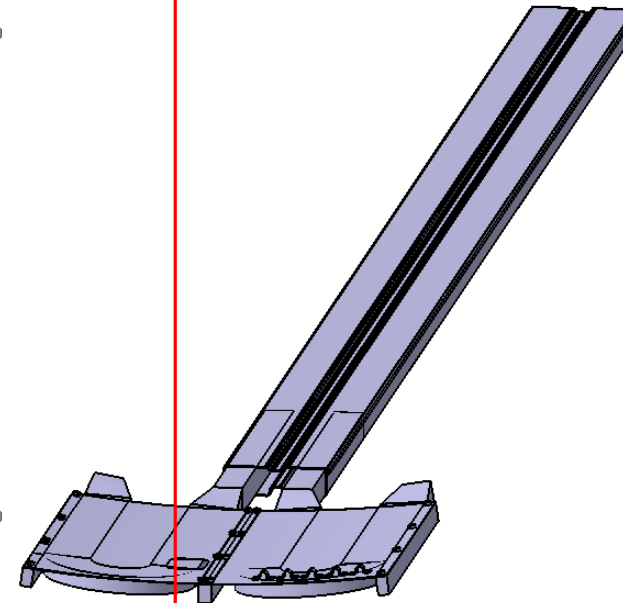
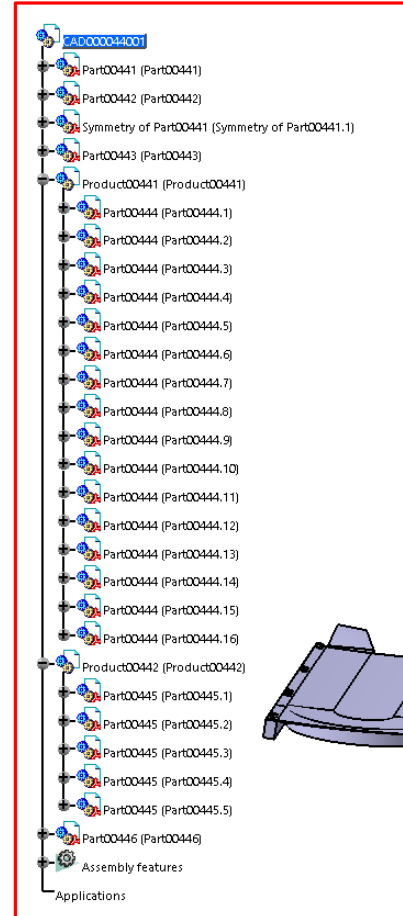


Changing structure of CATIA tree

1 part



3 assembly
25 part



Status

ST0247166_01 Inner Detector Ass. Side C- detailed		Part	40%
ST models	Sub components		
ST0276337_01 a.00 Cryostat with services		84	100%
		6	
Barrel TRT+SCT-C side detailed			
ST0271105_01	ST0271103_01 a.00 Barrel structure SCT assembly	200	77%
	ST0271156_01 a.00 Barrel TRT assembly	1	
	ST0298736_01 a.00 Thermal barrier SCT	25	
		1	
ST0299575_01 Barrel fixation		36	
ST0256279_02 Barrel services		2	100%
ST0295246_01 a.00 Spreader plate C side		4	0%
ST0247227_01 a.00 End Cap TRT + SCT		1	27%
		89	
		13	0%
		5	
ST0256277_02 a.00 END-CAP SERVICES		2	0%
ST0026496_01 a AT252274MQ: PPF1 CONICAL PLATES ALL QUADRANT E		2	100%
ST0026496_02 a.00 Symmetry of ST0026496_01_		2	
ST0252491_01 a.00 Pixel sideC with PST and services		1	0%
ST0225641_01 a.00 EP base side C Preliminary		1	0%
ST0225825_01 a.00 outer plates		1	

Thank you

