

ATLAS Today

p-p data re-processing (T1s)
p-p data simulation and reconstruction (T2s)
HI data taking and reconstruction(T0)
User analysis

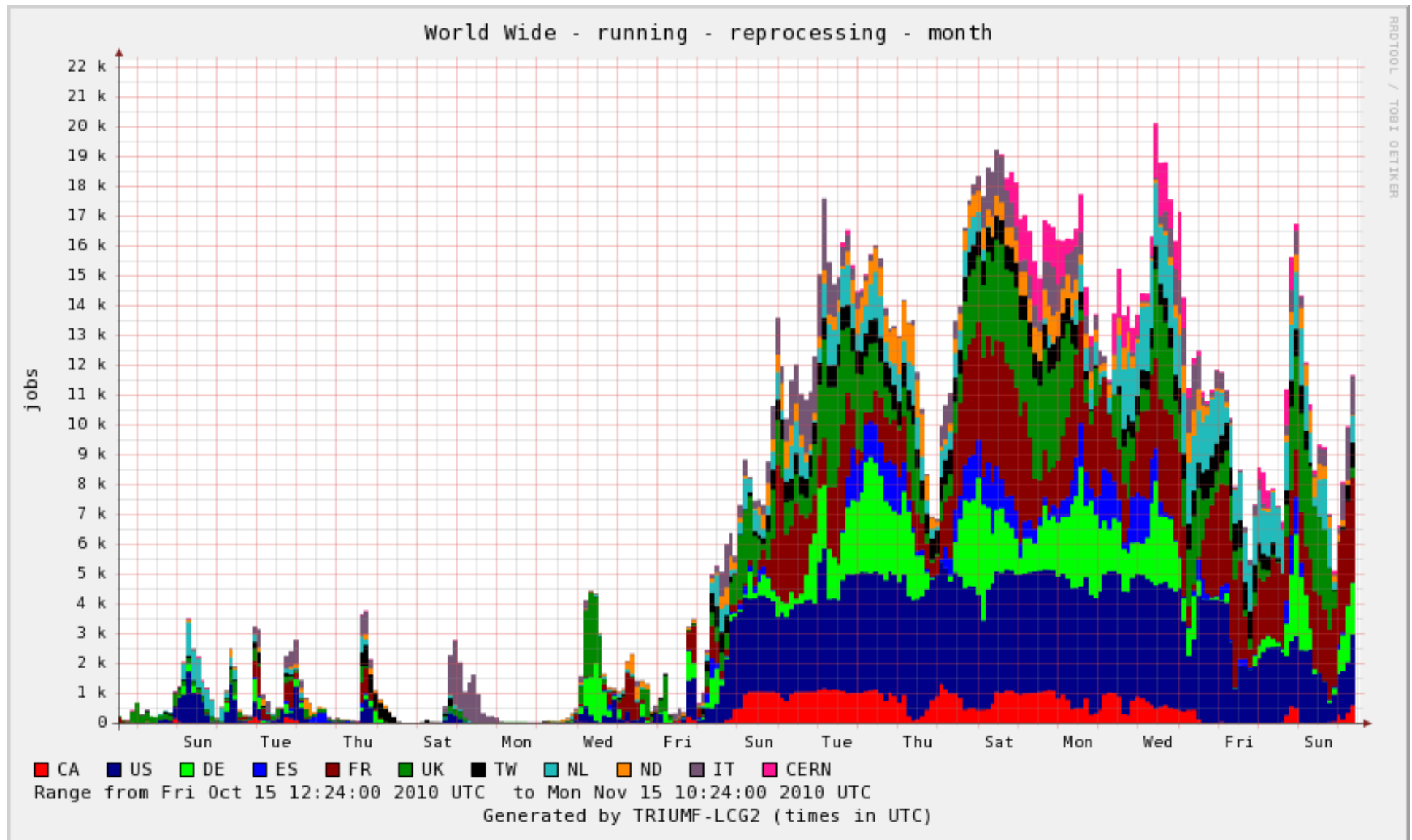
LHCC Meeting
November 16 2010

Re-processing Jobs

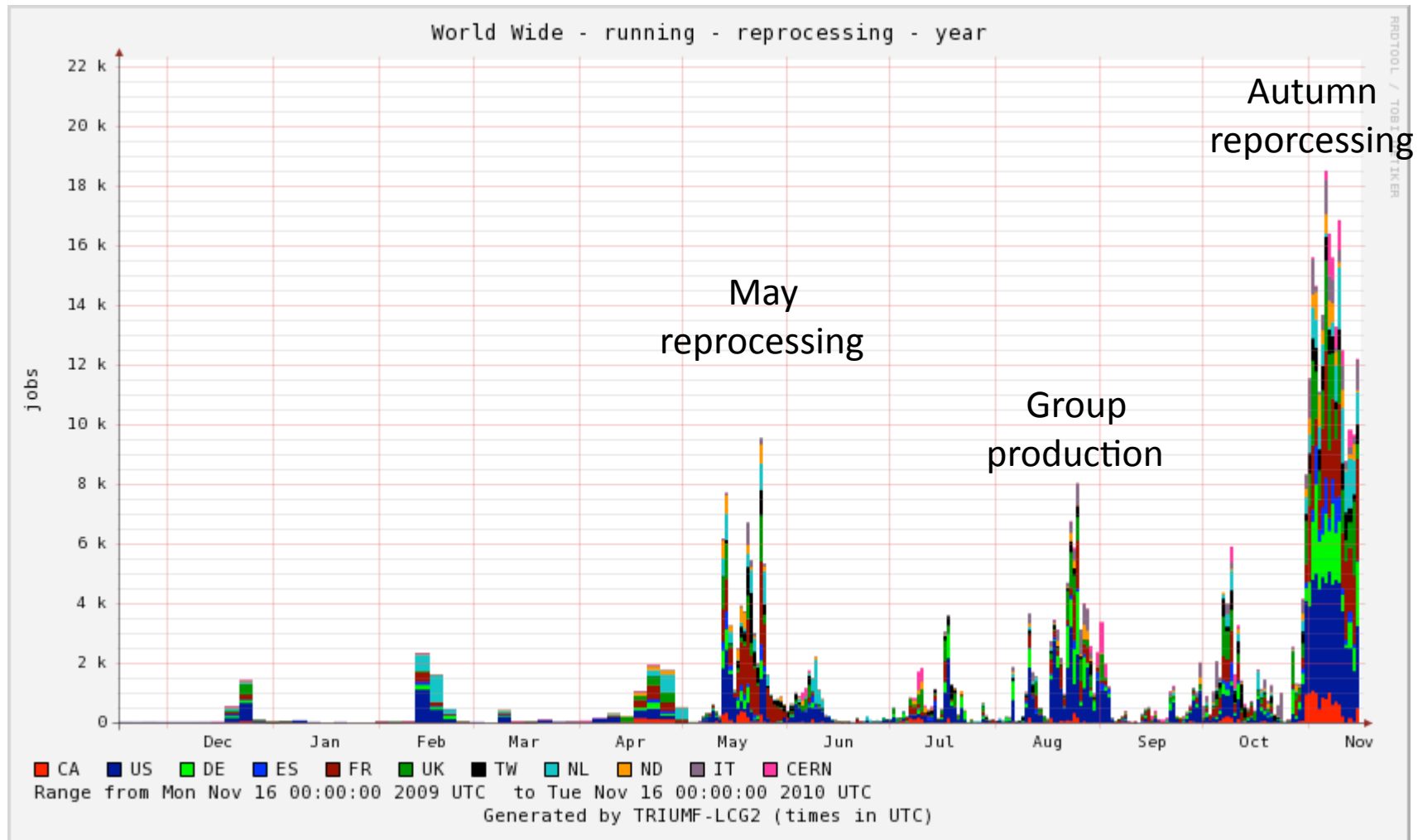
(October data still to be done)

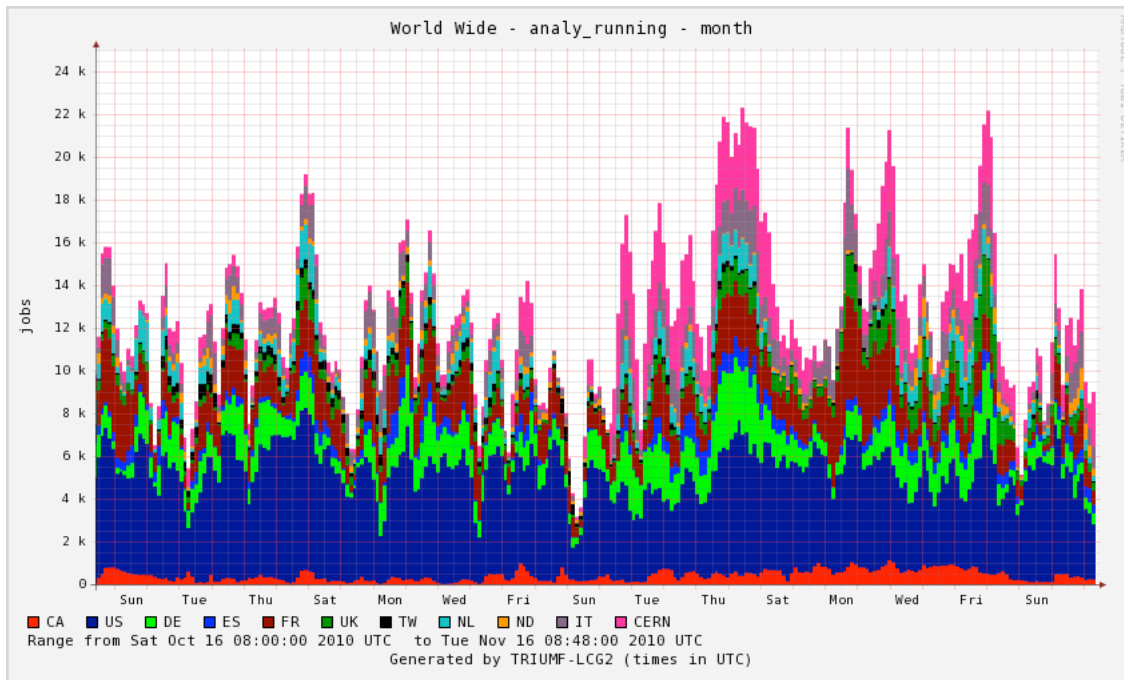
date-tier	CA	CERN	DE	ES	FR	IT	ND	NL	TW	UK	US	sum
10-10-30	88	0	974	976	908	1047	945	1934	2199	3355	2760	15186
10-10-31	2541	0	1	212	579	77	1475	2272	85	3249	11006	21497
10-11-01	2530	0	3619	73	7420	4448	628	3737	1866	3024	8004	35349
10-11-02	2714	109	5649	954	4463	3771	1295	2154	2670	5720	7902	37401
10-11-03	4891	40	9952	4590	2554	27	1924	2903	2003	3250	14146	46280
10-11-04	7	0	3625	163	3209	17	1511	842	2225	1	15809	27409
10-11-05	1539	10	0	4043	4317	922	2836	2564	1927	9574	21384	49116
10-11-06	2989	0	3598	4598	10722	3309	2482	1029	2584	11235	4648	47194
10-11-07	6917	0	5722	3943	7191	2801	4073	0	2554	20794	14315	68310
10-11-08	6749	0	15858	3643	5807	7003	6103	4084	334	8655	15161	73397
10-11-09	24	3989	1432	3180	6752	319	219	7075	597	298	19584	43469
10-11-10	0	6587	1	4	3026	2	7	9304	1806	193	7777	28707
10-11-11	0	5517	0	3	58	0	1	14324	2722	9	24361	46995
10-11-12	0	2	0	0	239	0	0	6994	2077	0	13677	22989
10-11-13	0	0	0	0	7164	0	0	979	638	0	0	8781
10-11-14	0	0	0	0	4906	0	0	663	0	0	0	5569
10-11-15	0	0	0	0	8416	0	0	0	0	0	0	8416
total jobs	30992	16256	50434	26385	78788	23745	23503	60864	26289	69361	180544	587161
total done	30989	16254	50431	26382	77731	23743	23499	60858	26287	69357	180534	586065
%%	100.0	100.0	100.0	100.0	98.7	100.0	100.0	100.0	100.0	100.0	100.0	99.8
aborted	3	2	3	3	7	2	4	6	2	4	10	46
running	0	0	0	0	1050	0	0	0	0	0	0	1050

Reprocessing CPU load



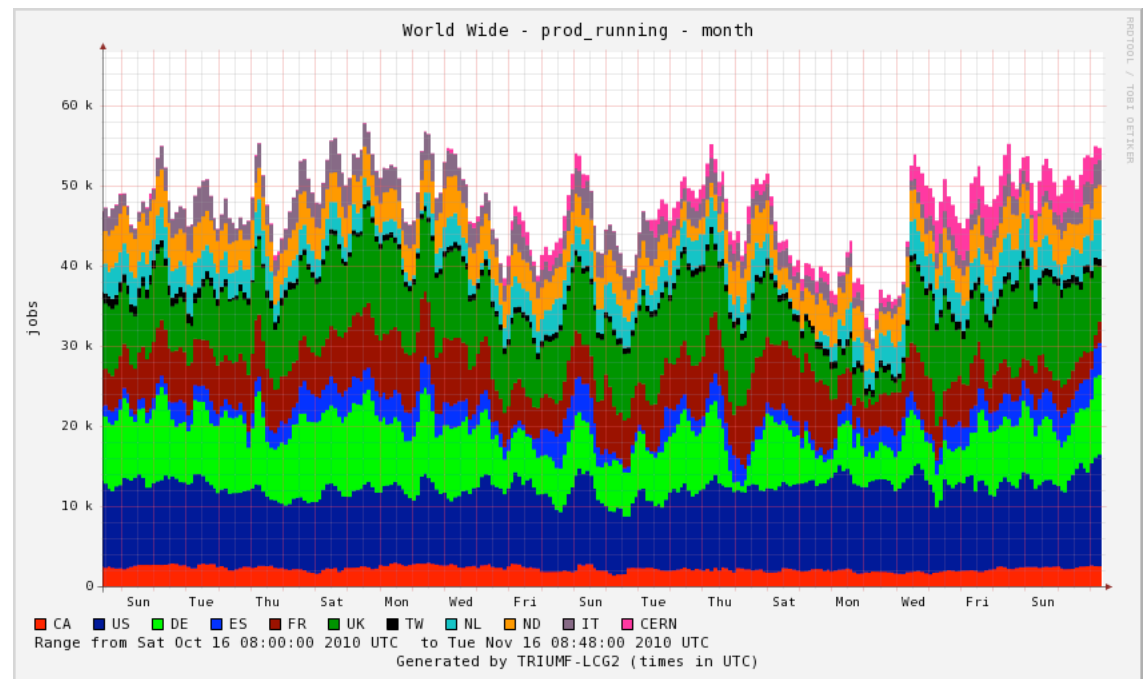
Yearly view





- One month view
- Just Analysis
- 15k jobs slots
- mostly T2

- One month view
- All Production
- 50k jobs slots
- T1s (re-processing)
- T2s (simulation)



Overall export on the Grid

(per cloud and per activity)

