

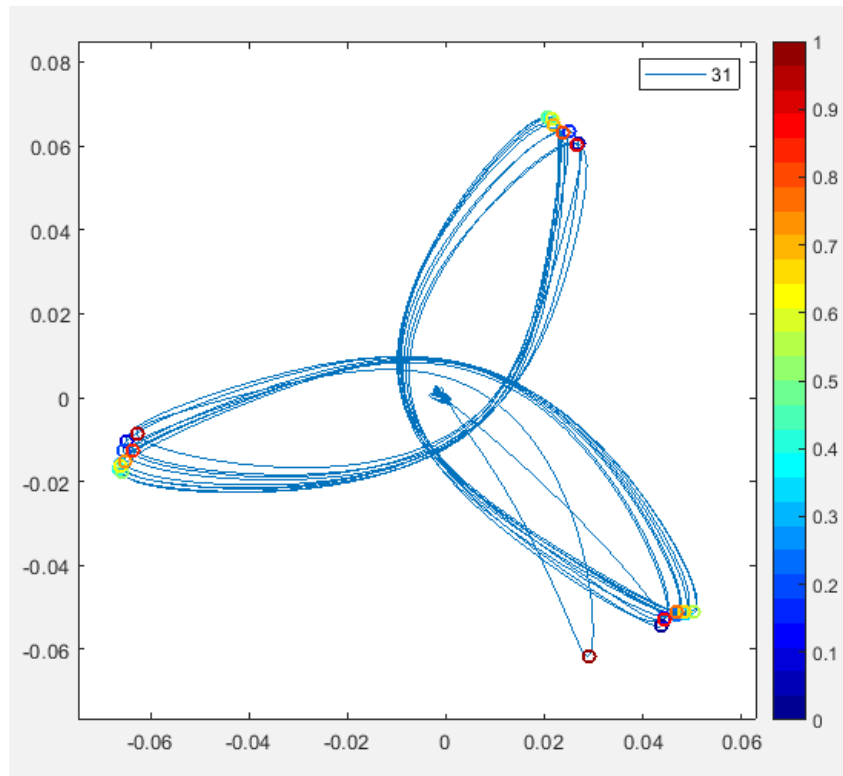
XBOXes Update

15/05/2019

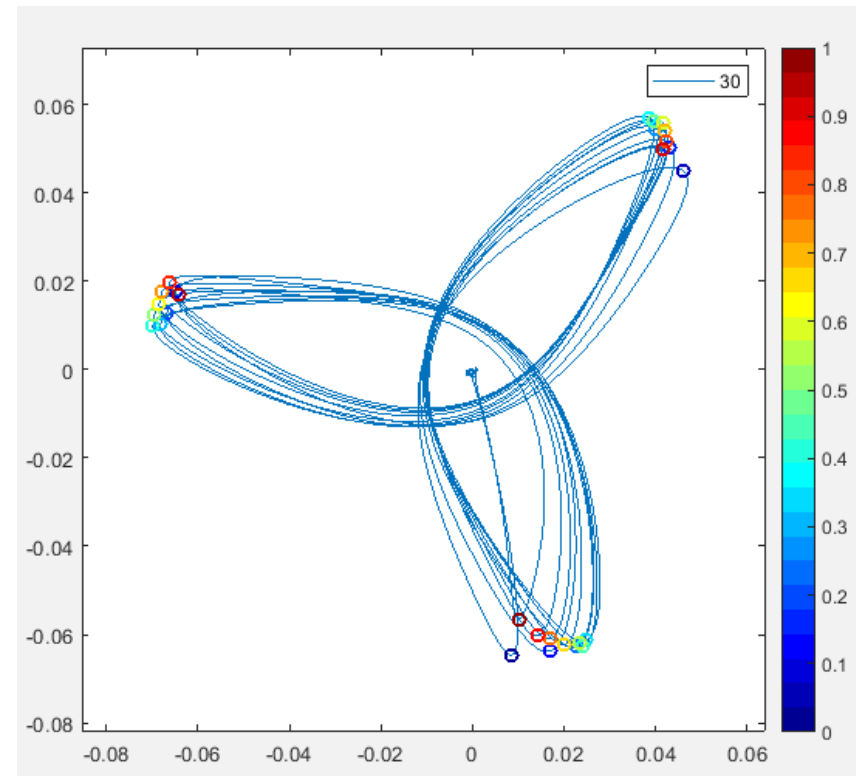
XBOX team

Superstructure Bead Pull Results – 11.98585

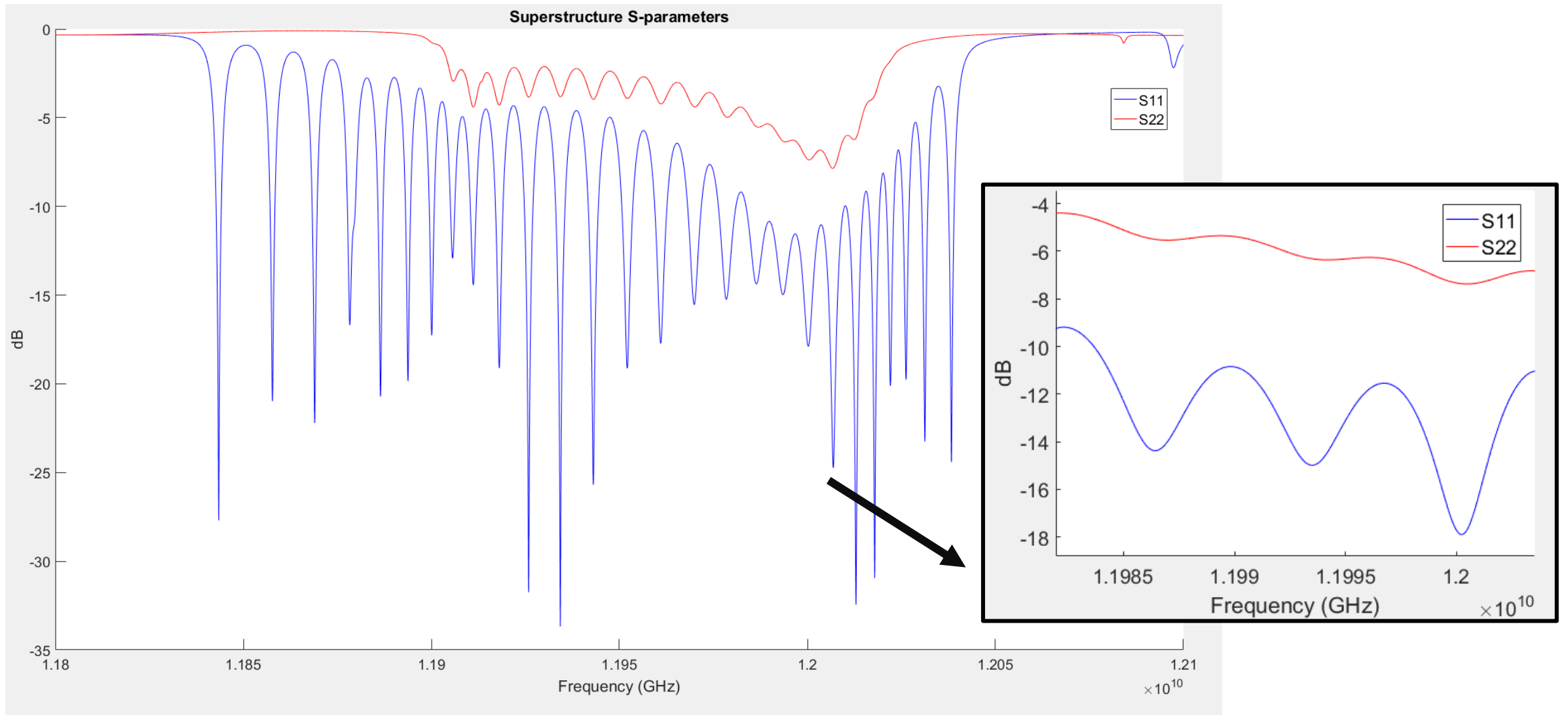
- Good Structure N3



- Bad Structure N4

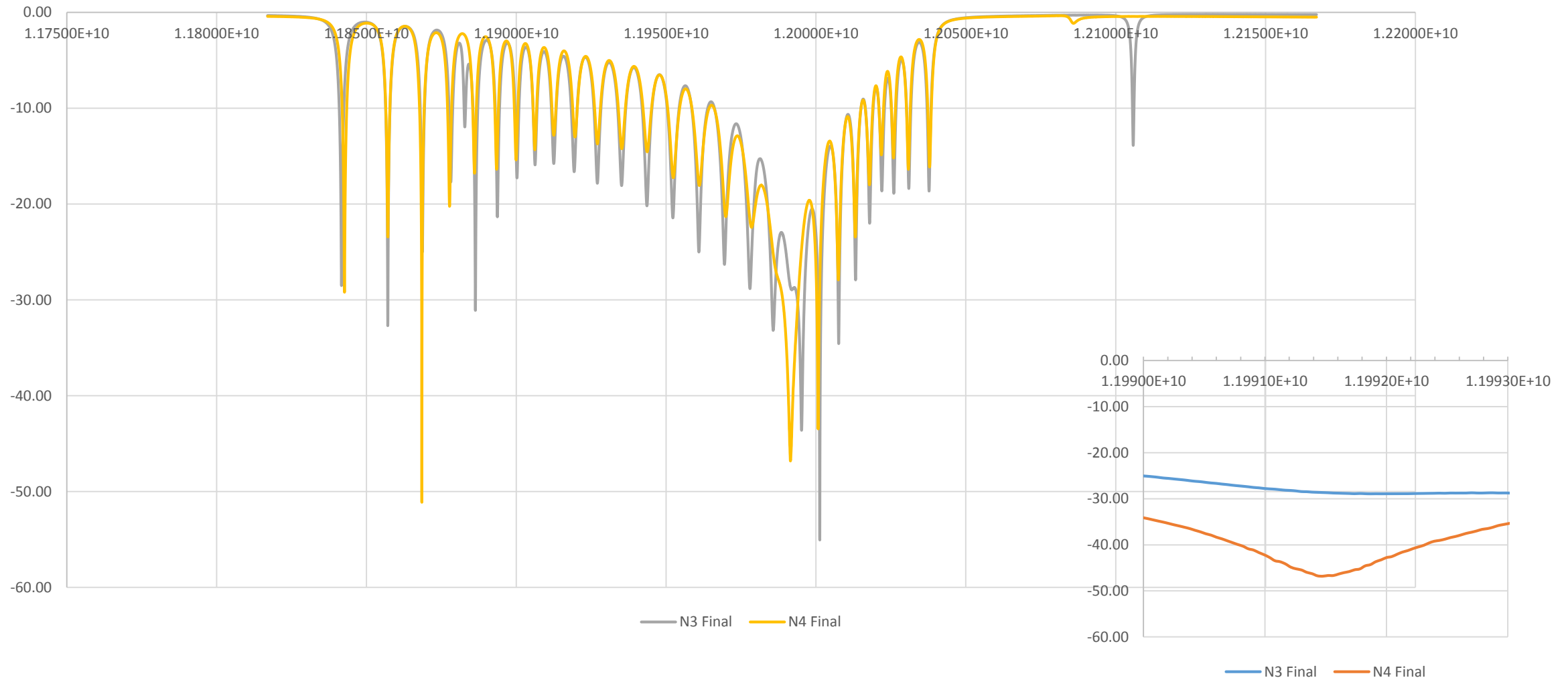


Our measurement - S11 and S22 (Structure 2)



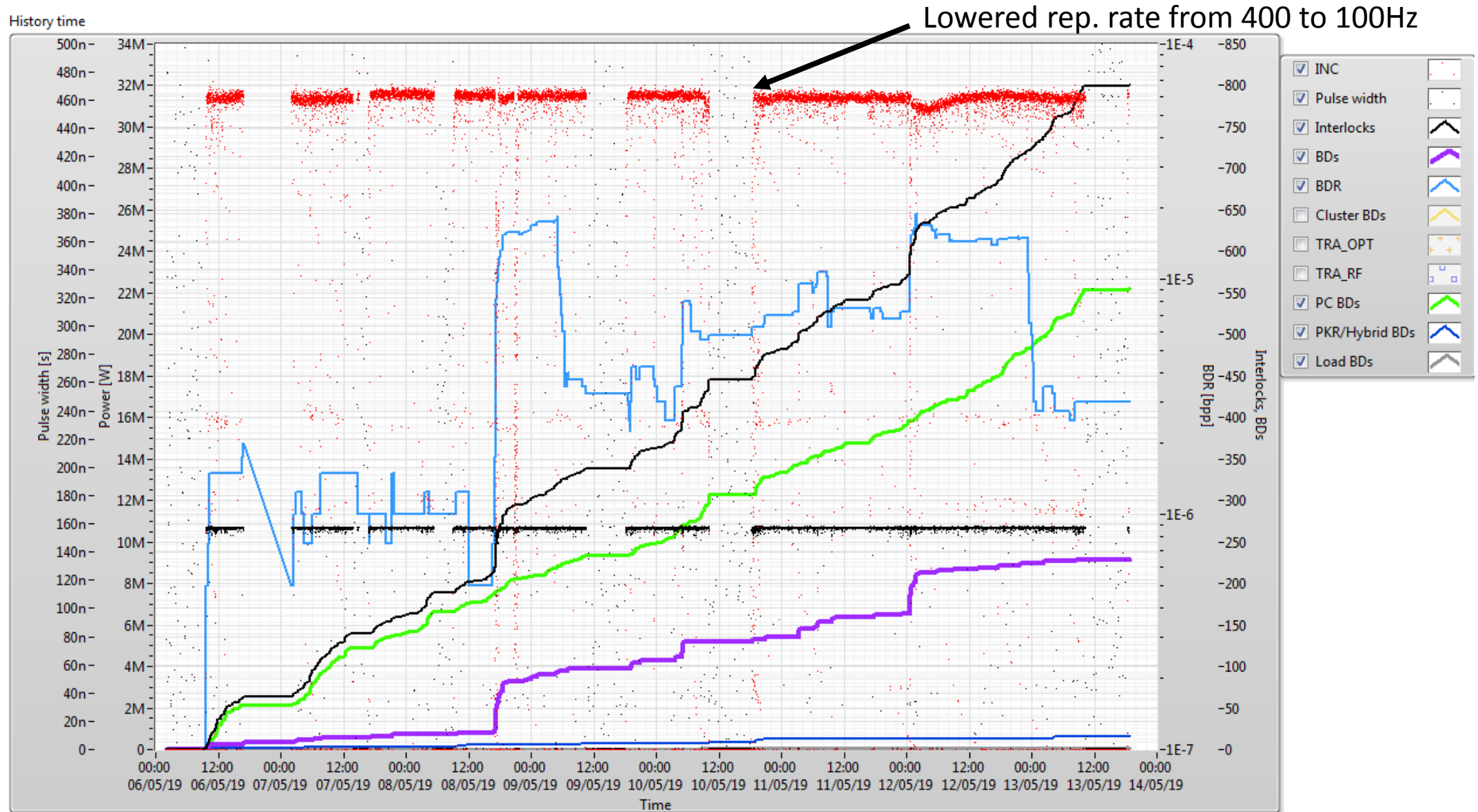
Superstructure Bead Pull Results

Final Superstructure



06/05/19 to now

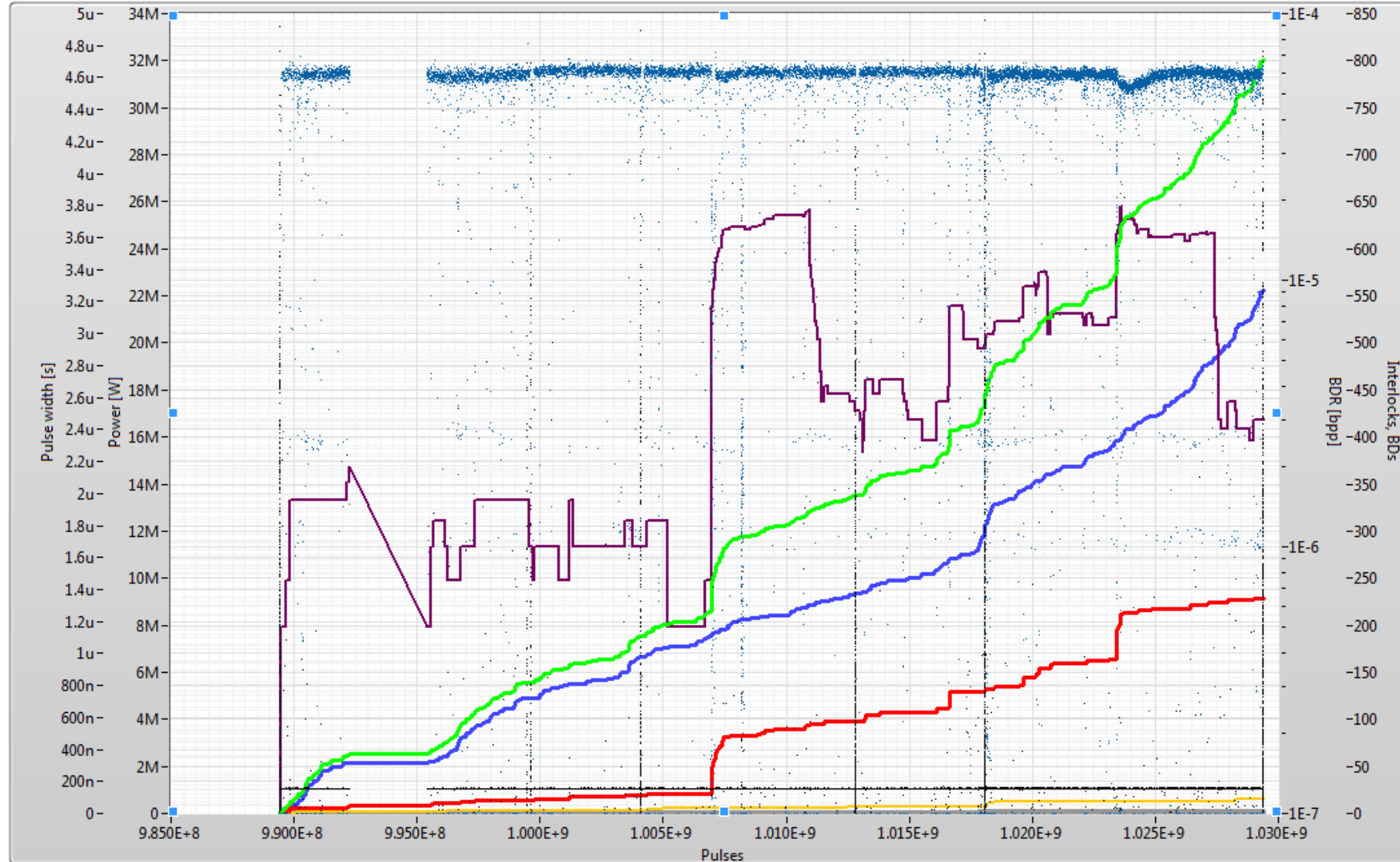
XBox 3 line 1 (T24 N5)



06/05/19 to now

XBox 3 line 1 (T24 N5)

History Pulses

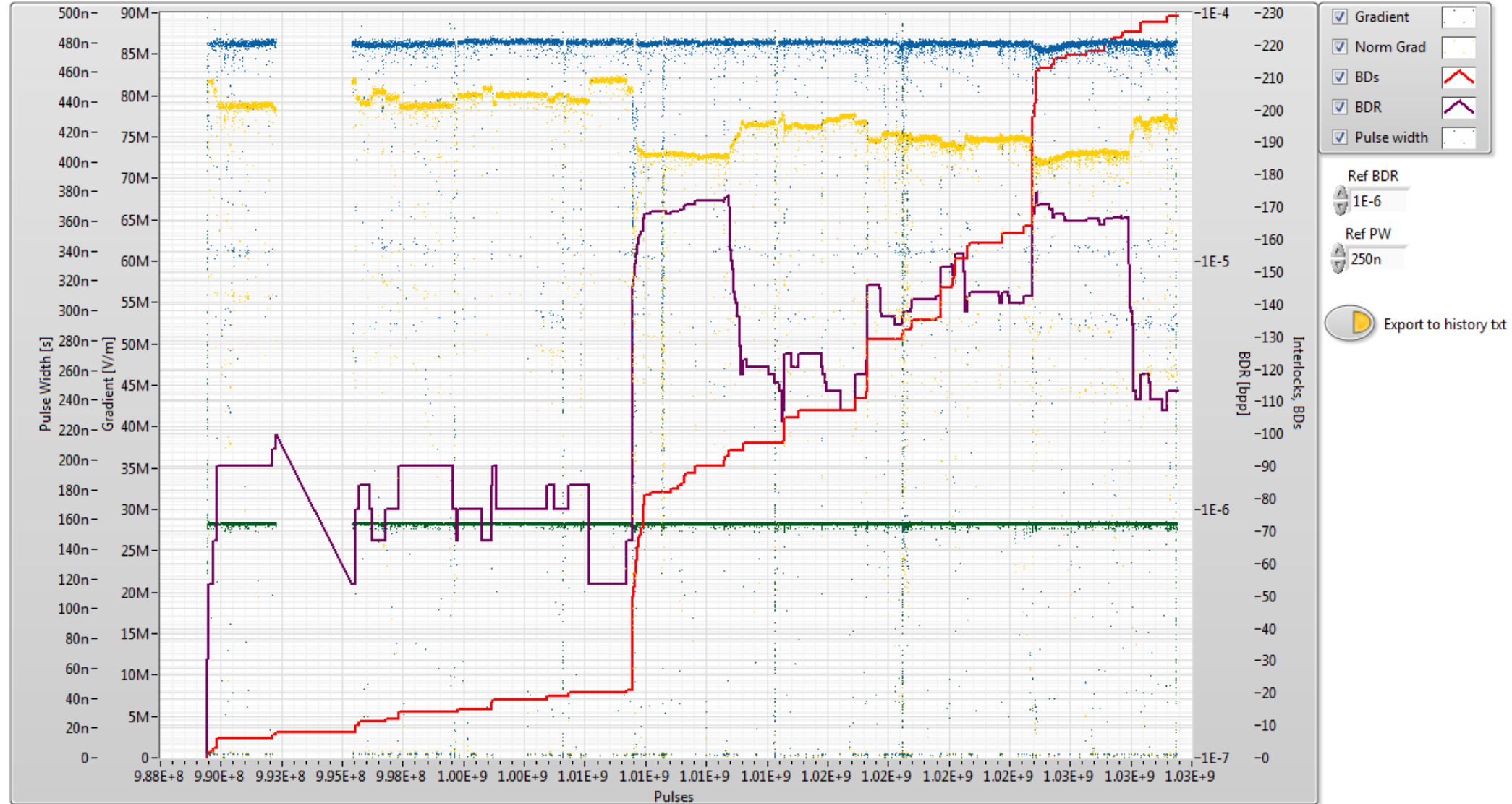


- INC avg
- Pulse width
- Interlocks
- BDs
- BDR
- TRA_OPT
- TRA_RF
- PC BDs
- PKR/Hybrid BDs
- Load BDs

06/05/19 to now

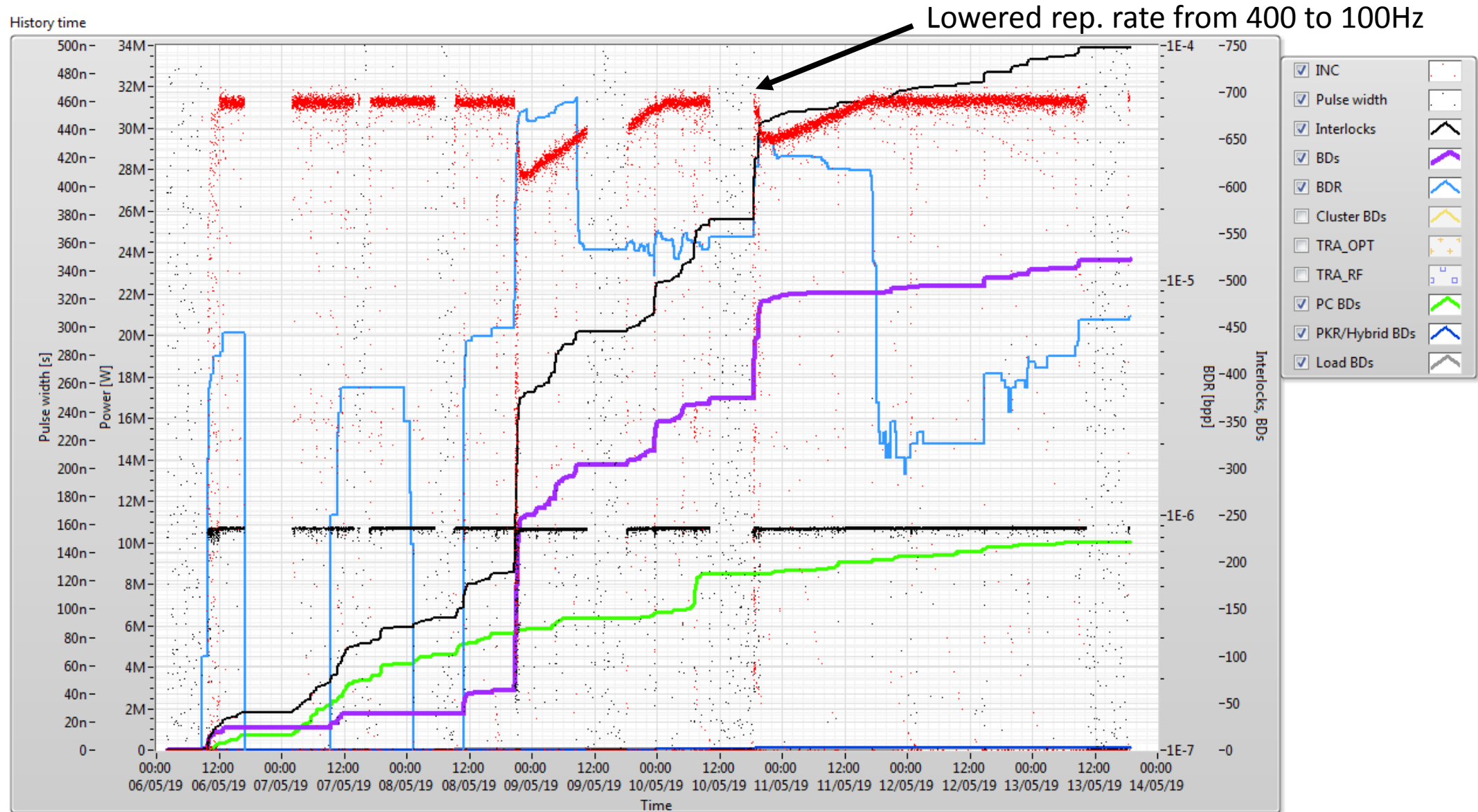
XBox 3 line 2 (T24 N4)

History Gradient



06/05/19 to now

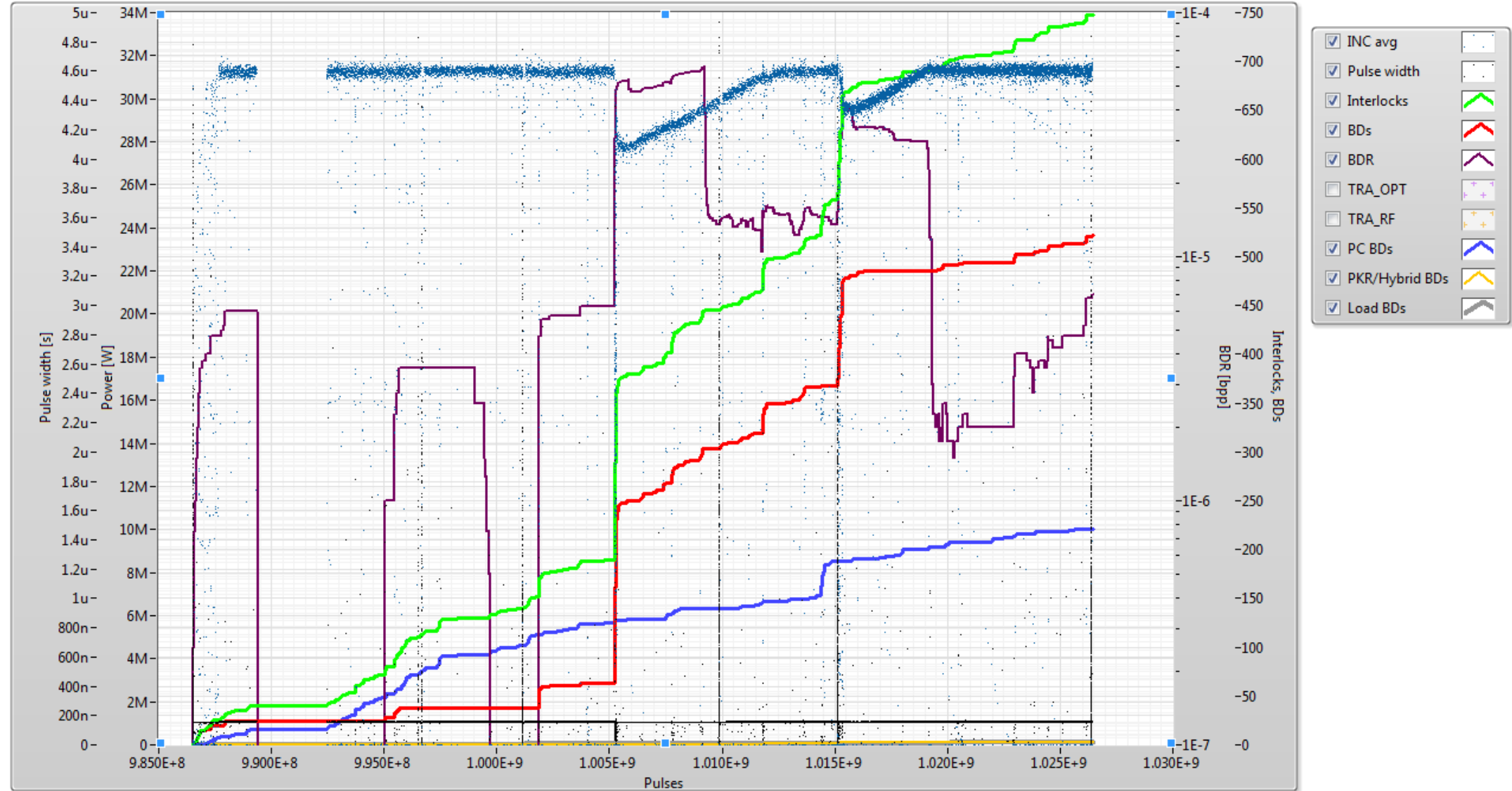
XBox 3 line 2 (T24 N4)



06/05/19 to now

XBox 3 line 2 (T24 N4)

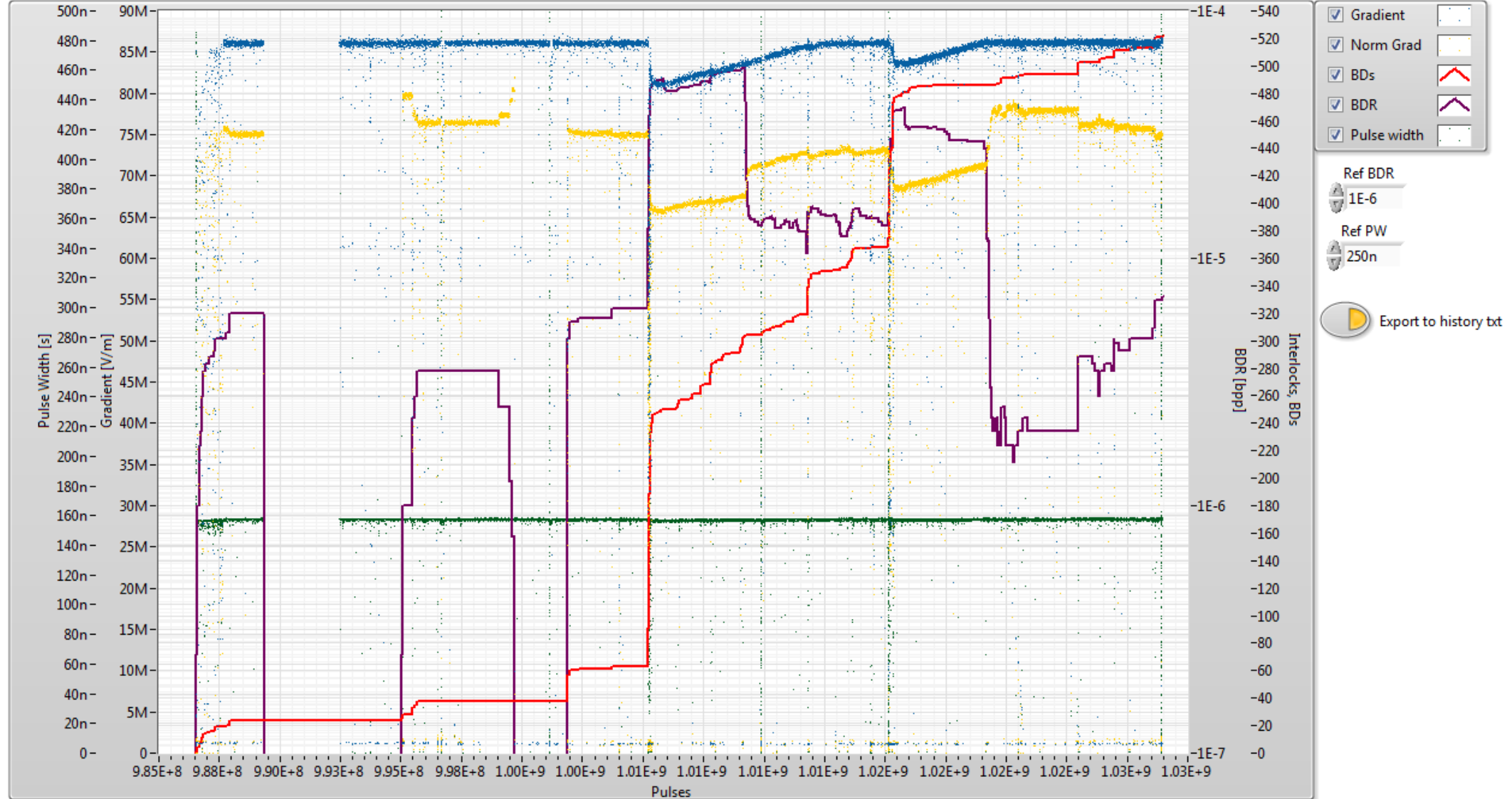
History Pulses

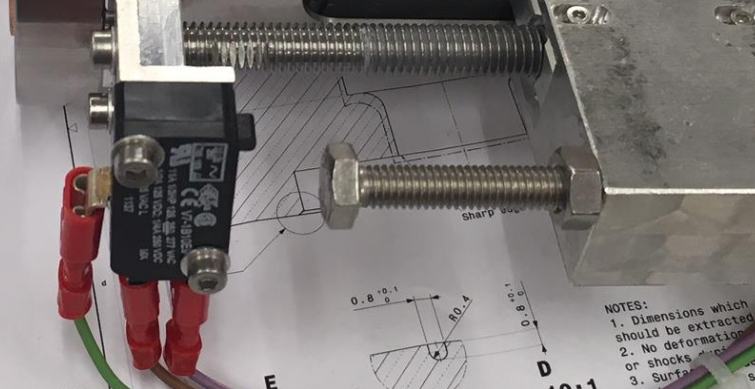
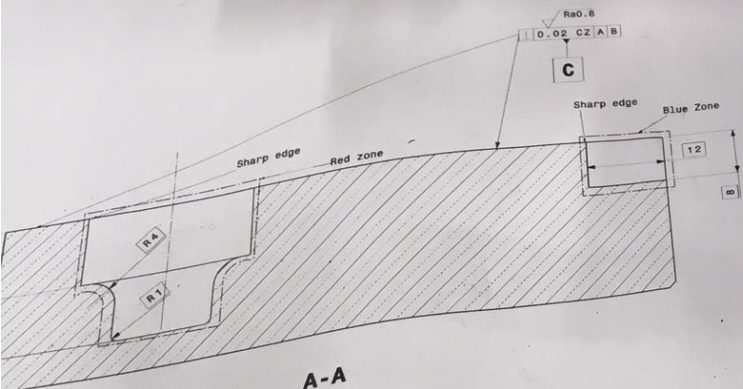
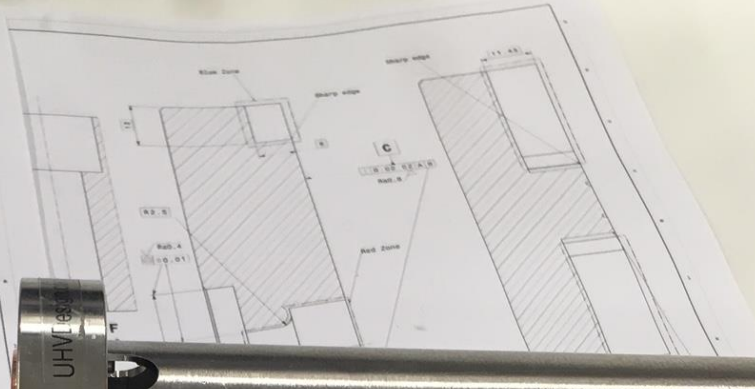
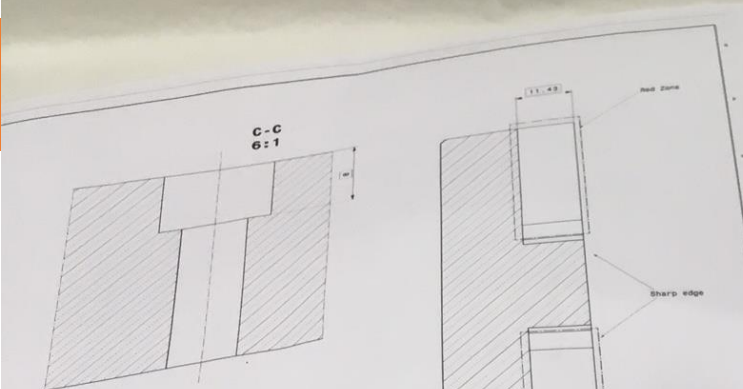
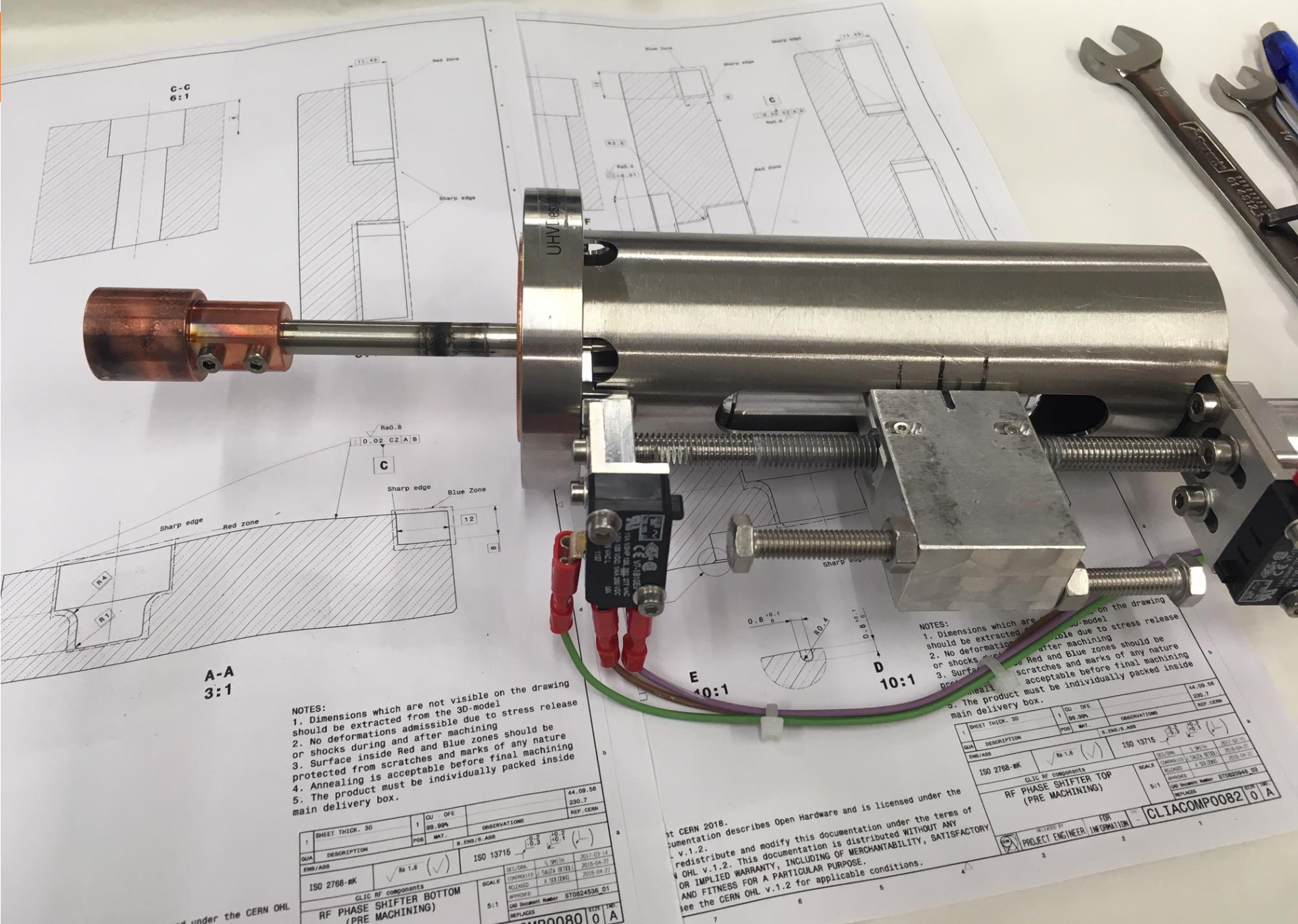


06/05/19 to now

XBox 3 line 2 (T24 N4)

History Gradient





A-A
3:1

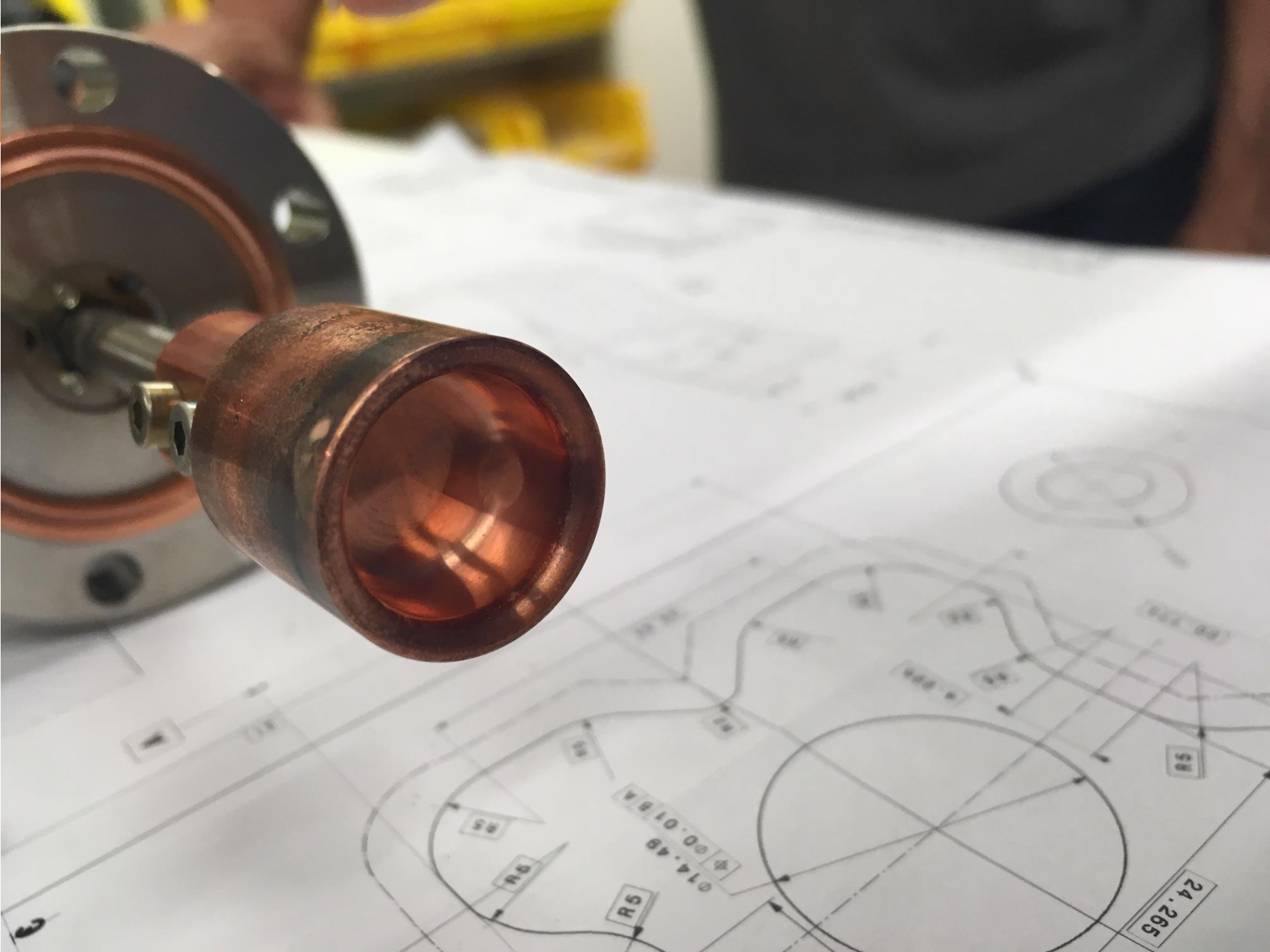
NOTES:
 1. Dimensions which are not visible on the drawing should be extracted from the 3D-model.
 2. No deformations admissible due to stress release or shocks during and after machining.
 3. Surface inside Red and Blue zones should be protected from scratches and marks of any nature.
 4. Annealing is acceptable before final machining.
 5. The product must be individually packed inside main delivery box.

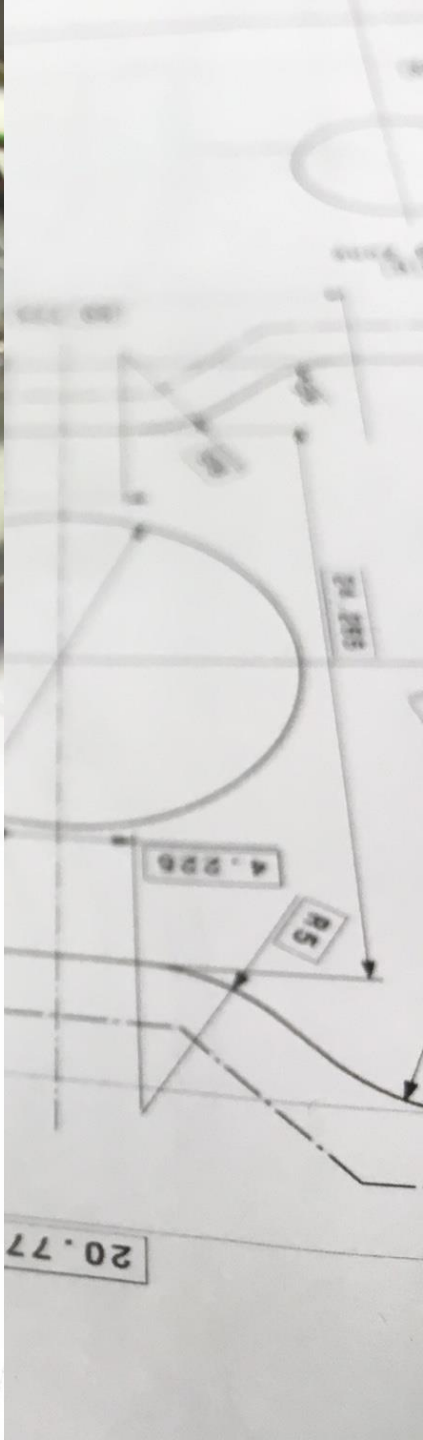
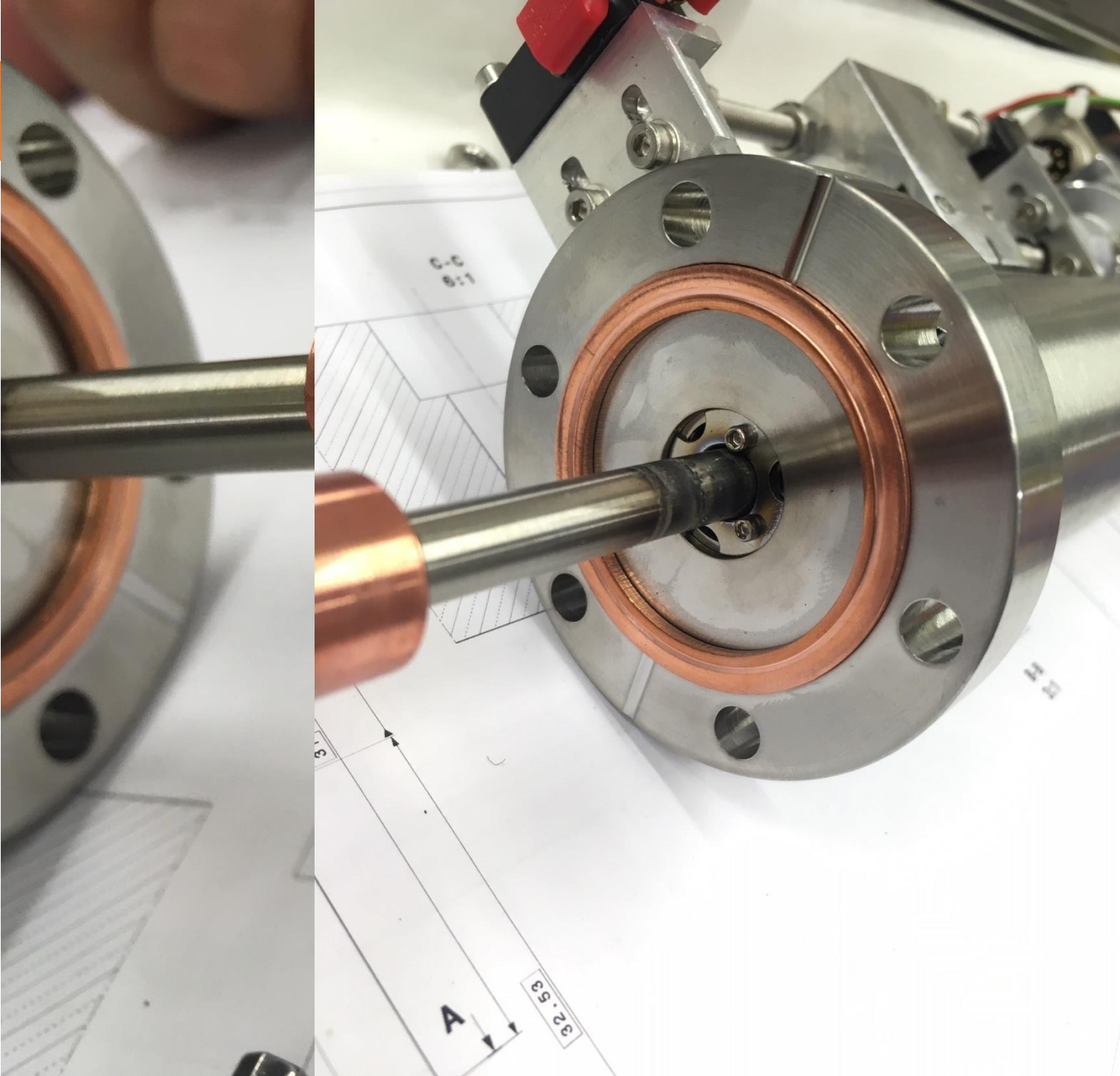
NOTES:
 1. Dimensions which are not visible on the drawing should be extracted from the 3D-model.
 2. No deformations admissible due to stress release or shocks during and after machining.
 3. Surface inside Red and Blue zones should be protected from scratches and marks of any nature.
 4. Annealing is acceptable before final machining.
 5. The product must be individually packed inside main delivery box.

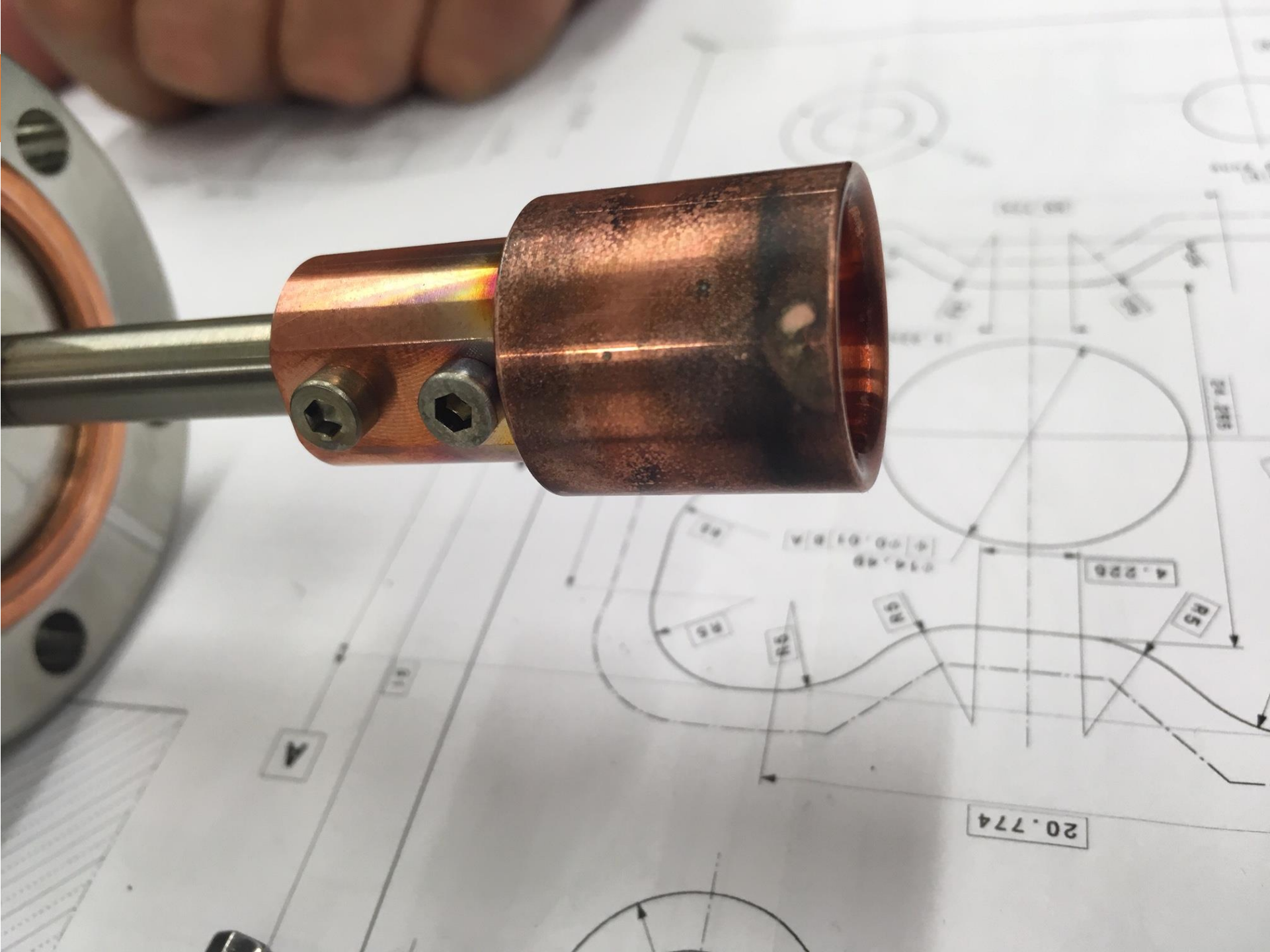
1	SHEET THICK. 30	1	CU - OFE	44.09.56
			99.99%	230.7
				REF. CERN
ISO 2768-mK	ISO 13715	ISO 13715	ISO 13715	ISO 13715
CLIC RF components				
RF PHASE SHIFTER BOTTOM (PRE MACHINING)				
SCALE	5:1	SCALE	5:1	SCALE
REVISIONS	A 2018-04-27	REVISIONS	A 2018-04-27	REVISIONS
CAD DOCUMENT NUMBER	BT0824536_01	CAD DOCUMENT NUMBER	BT0824536_01	CAD DOCUMENT NUMBER
REPLACES		REPLACES		REPLACES
CLICOMP0080				

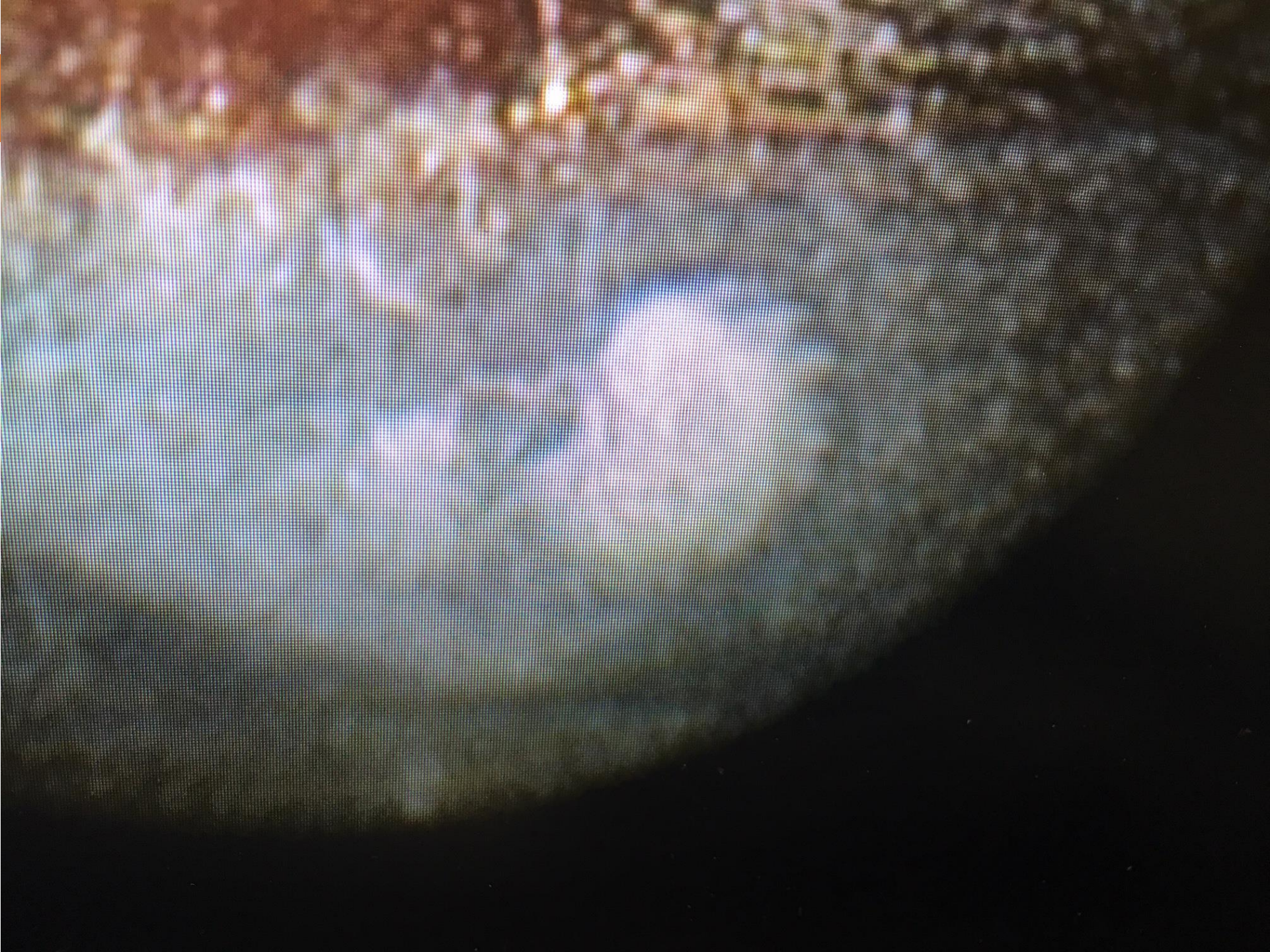
1	CU - OFE	44.09.56
	99.99%	230.7
		REF. CERN
ISO 2768-mK	ISO 13715	ISO 13715
CLIC RF components		
RF PHASE SHIFTER TOP (PRE MACHINING)		
SCALE	5:1	SCALE
REVISIONS	A 2018-04-27	REVISIONS
CAD DOCUMENT NUMBER	BT0824536_01	CAD DOCUMENT NUMBER
REPLACES		REPLACES
CLICOMP0082		

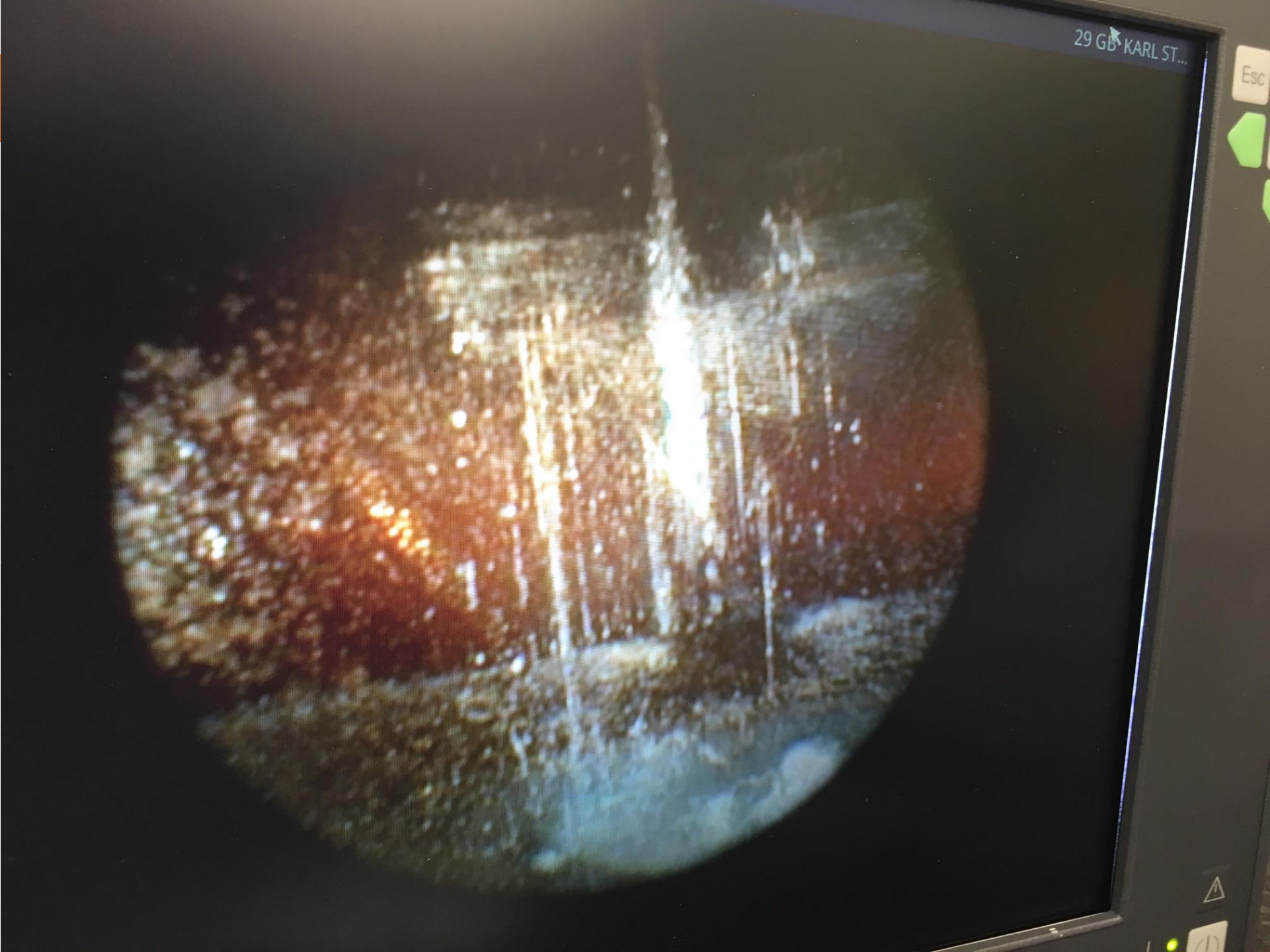
© CERN 2018.
 This documentation describes Open Hardware and is licensed under the terms of the CERN OHL v.1.2. This documentation is distributed WITHOUT ANY WARRANTY, INCLUDING OF MERCHANTABILITY, SATISFACTORY OR FITNESS FOR A PARTICULAR PURPOSE.
 See the CERN OHL v.1.2 for applicable conditions.

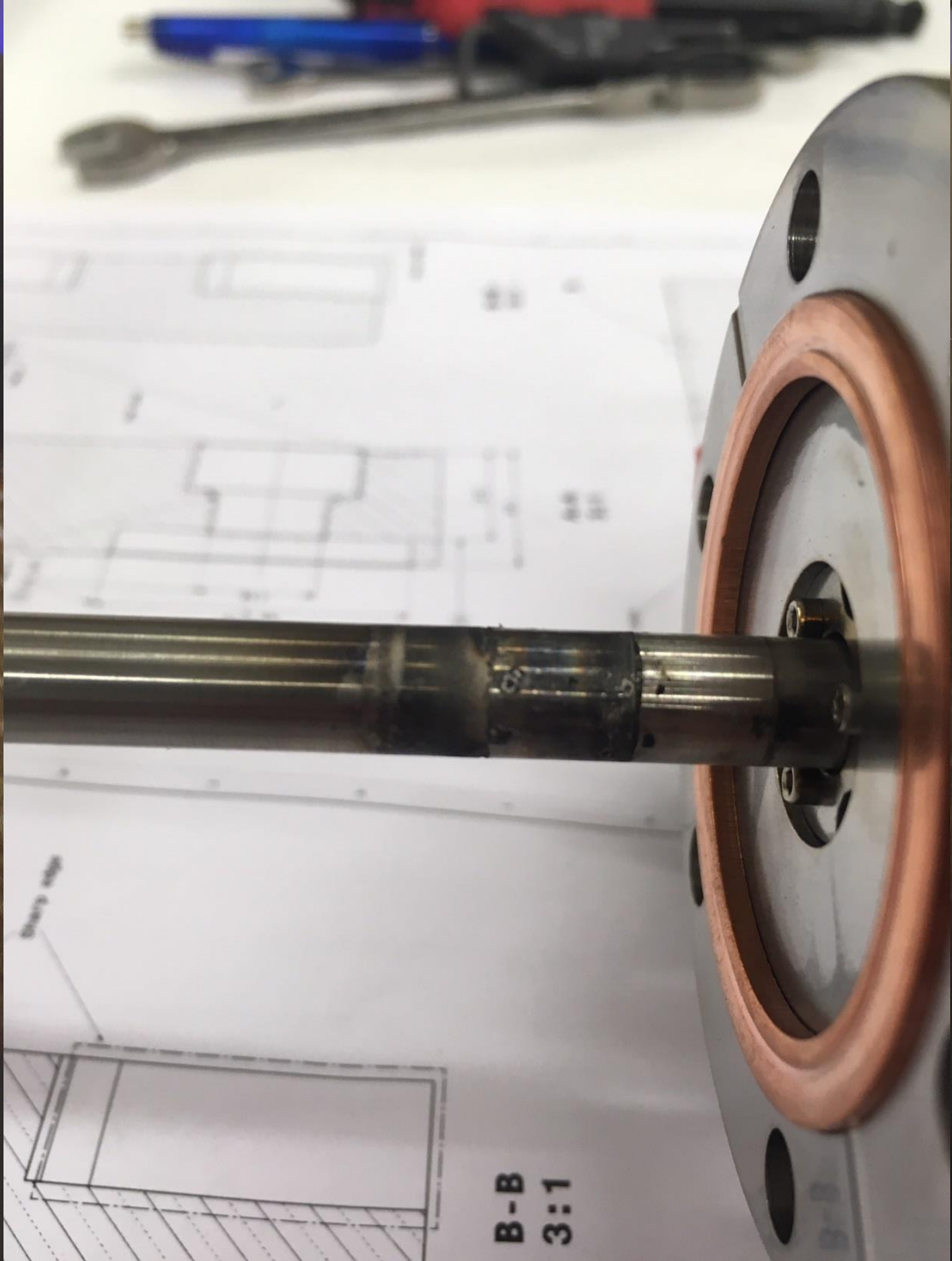












B-B
3:1

