

# Schlieren Image Analysis

MPP

Bastian Rapp

# Creating relevant Images

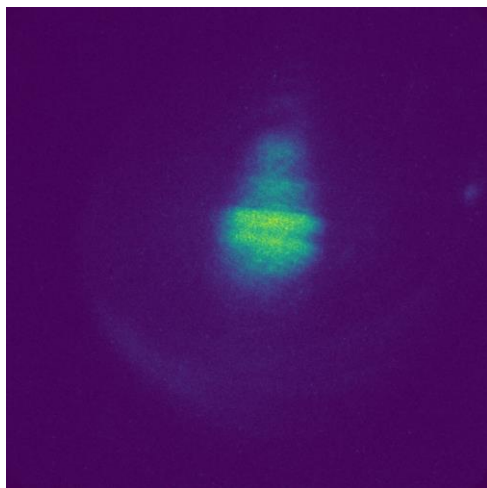


Image with ionizing and imaging Laser

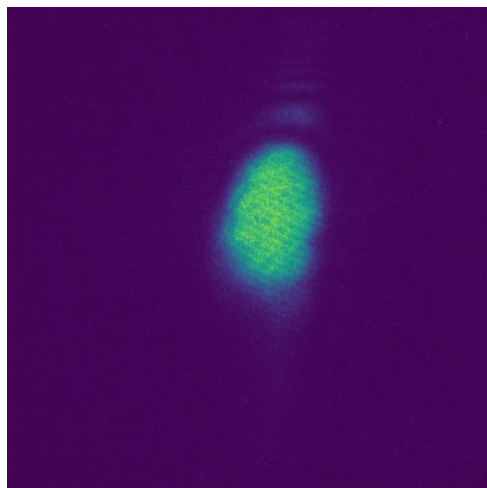
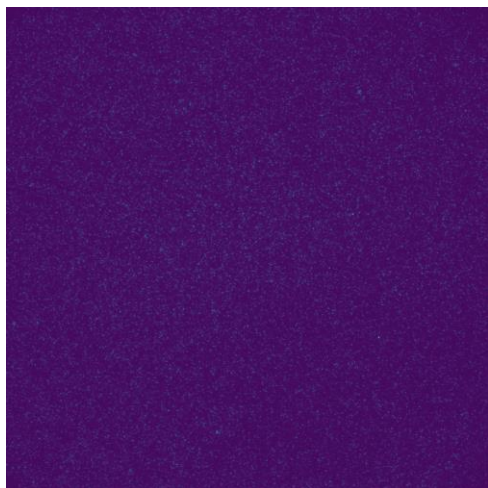
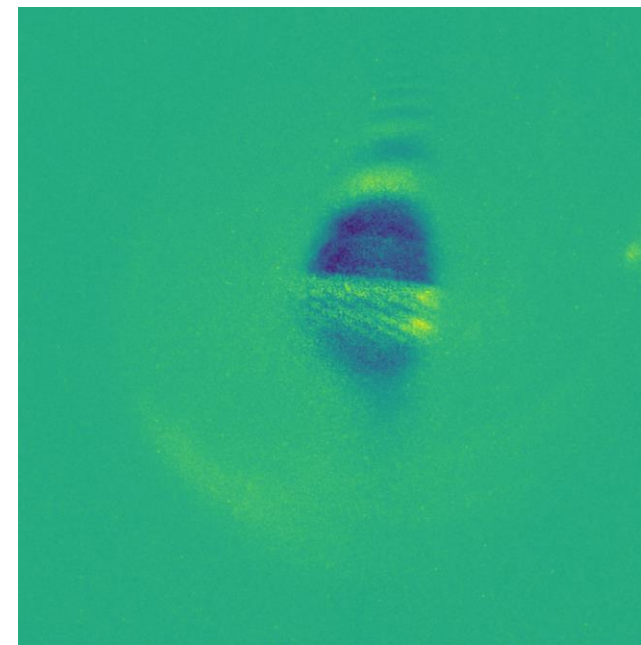


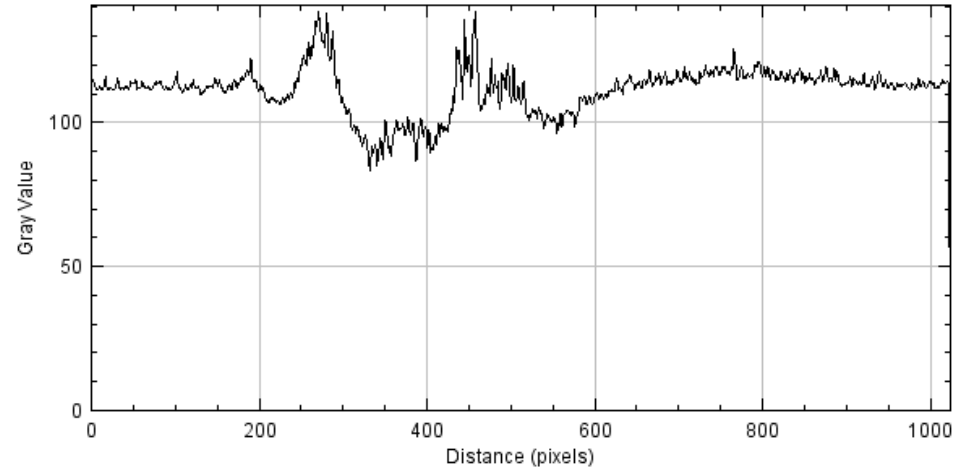
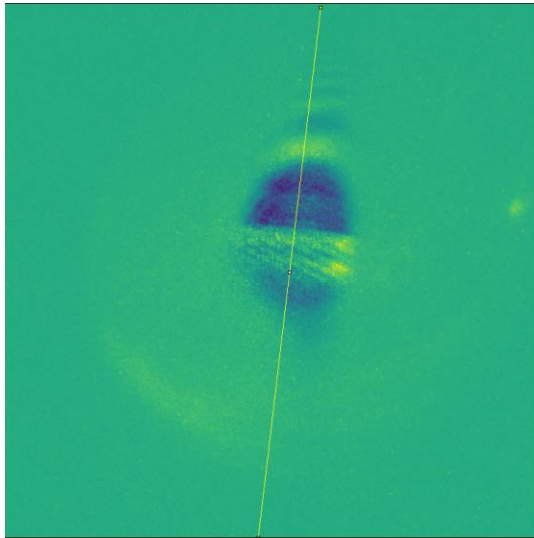
Image with just imaging Laser



Background with ionizing Laser

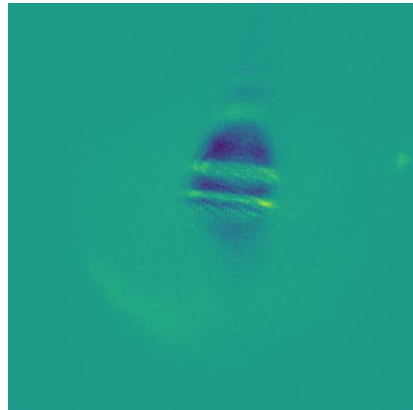
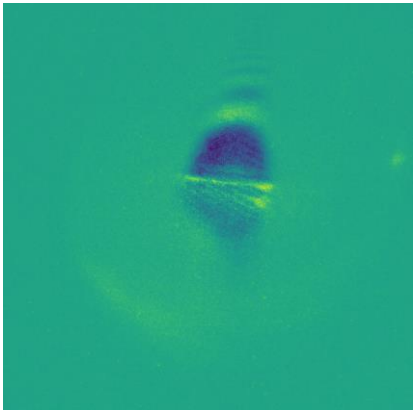


# Analysis

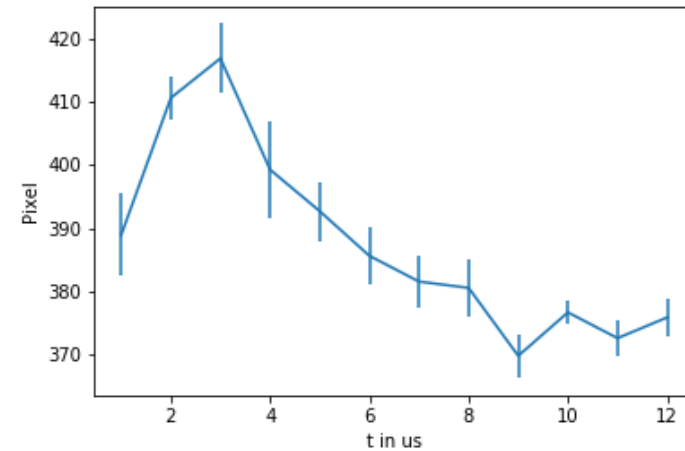


- Looking at evolution of minima and maxima
- Problem of time measurement: low energy, laser filamentation -> great variance:

2 pictures of same time stamp:

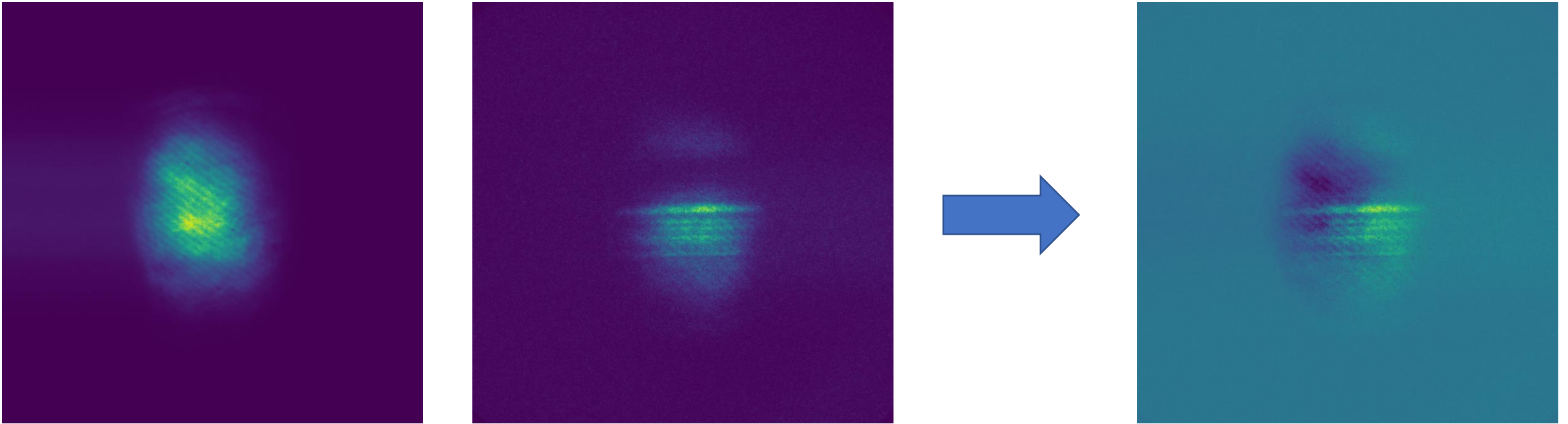


Minimum Position:



# Energy dependency

Problems right now:



- Background without ionizing Laser seems to be misshaped -> resulting image misaligned