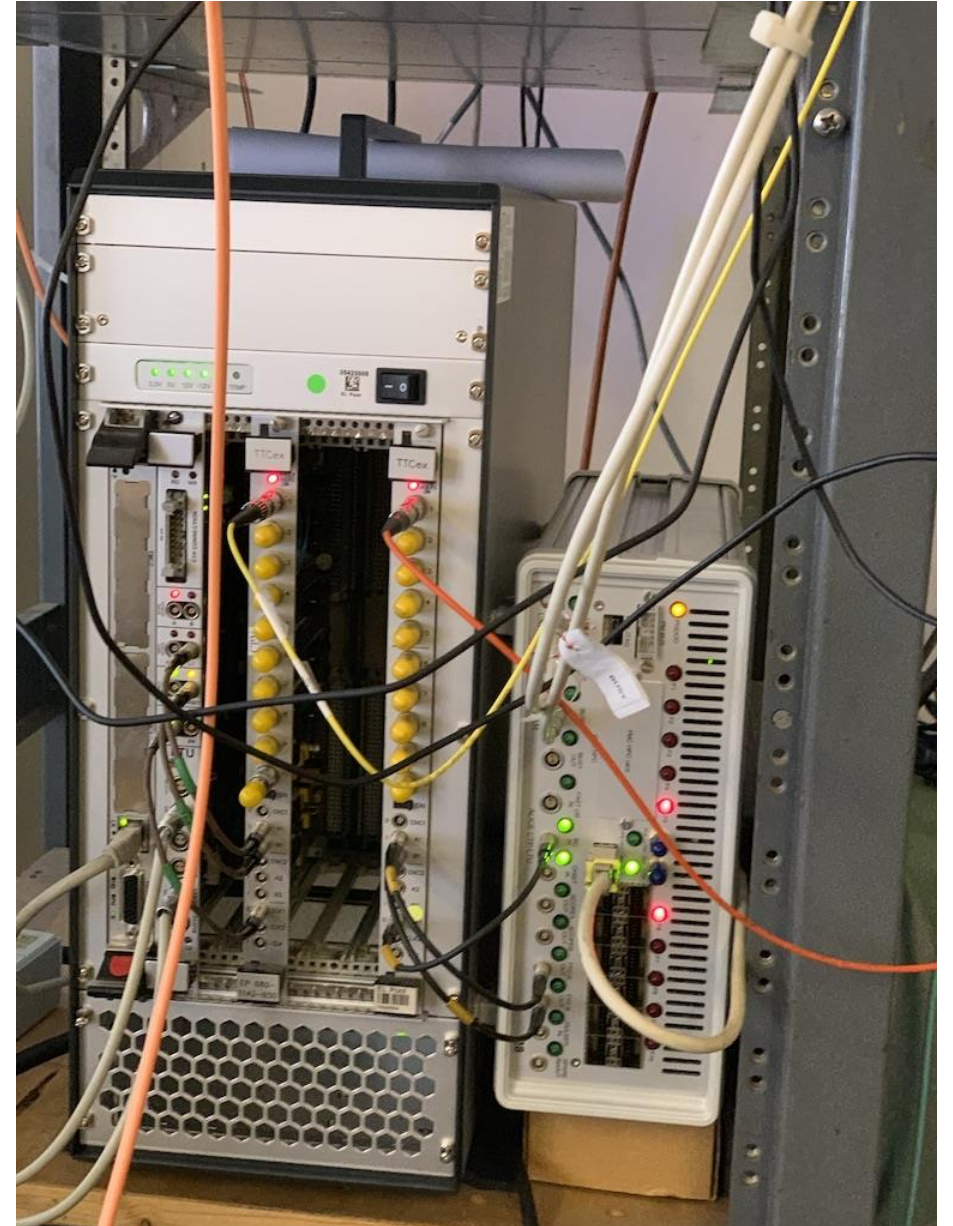
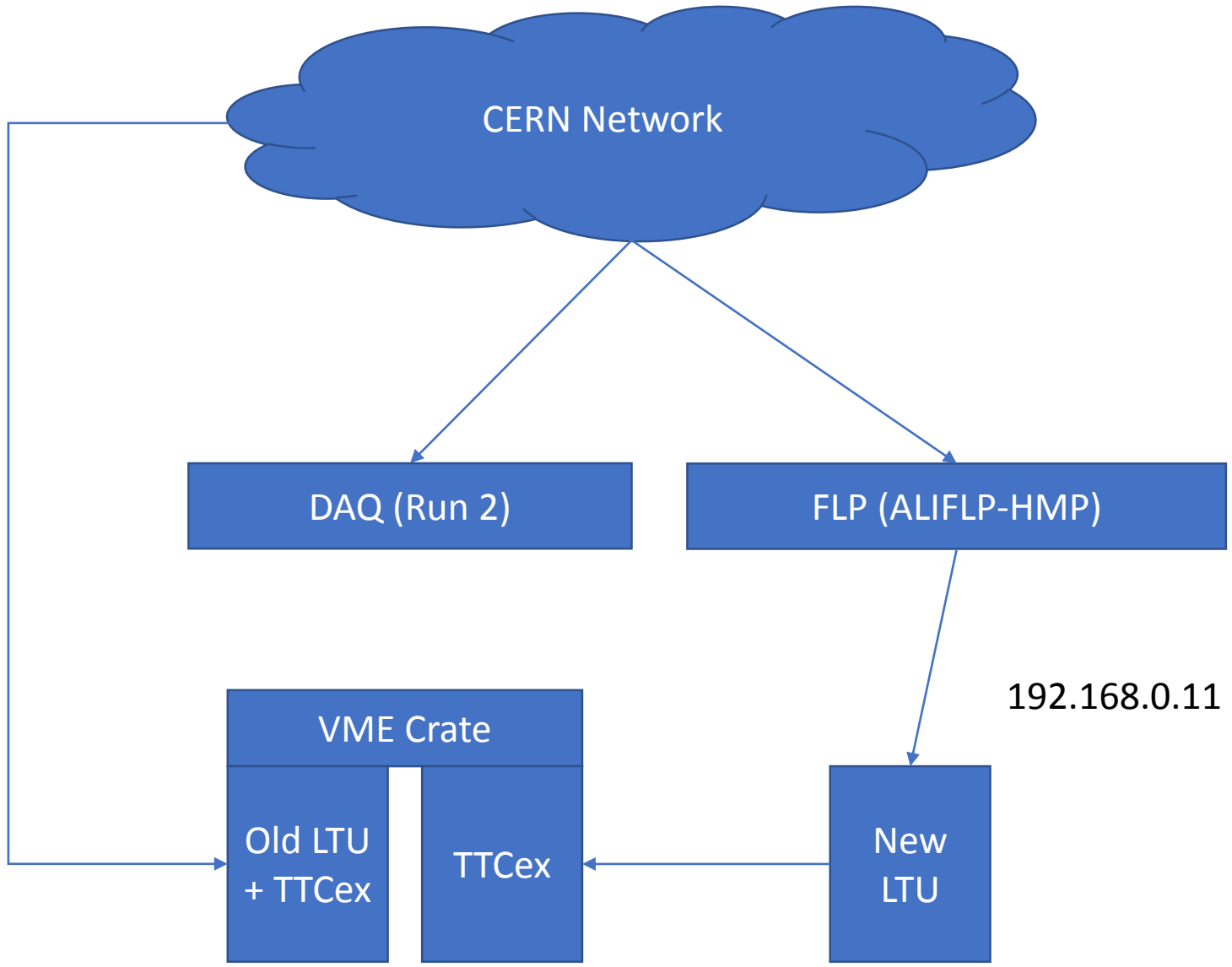


Updates from Lab 581

# New LTU Setup

- New LTU has arrived and has been installed
- Thanks to Jakub from CTP Team for helping us with installation
- There are still some issues with firmware, connectivity which Jakub and team are helping us solve.





# Some important commands – on FLP

- **atb** – Command line control of ATB
- **atb 28** – Our Board number
- **echo "bootfpga" | atb 28** – Reboot fpga after firmware update
- **ctp3-load -l -a 192.168.0.11 -f ltu\_logic\_v9\_0a** – Update Firmware
- **atb 28 pllin1** - Programming PLL 1 – Standalone Clock from TTCex
- **Qtltu** – To start LTU Control

