

# MMC mezzanine implementation

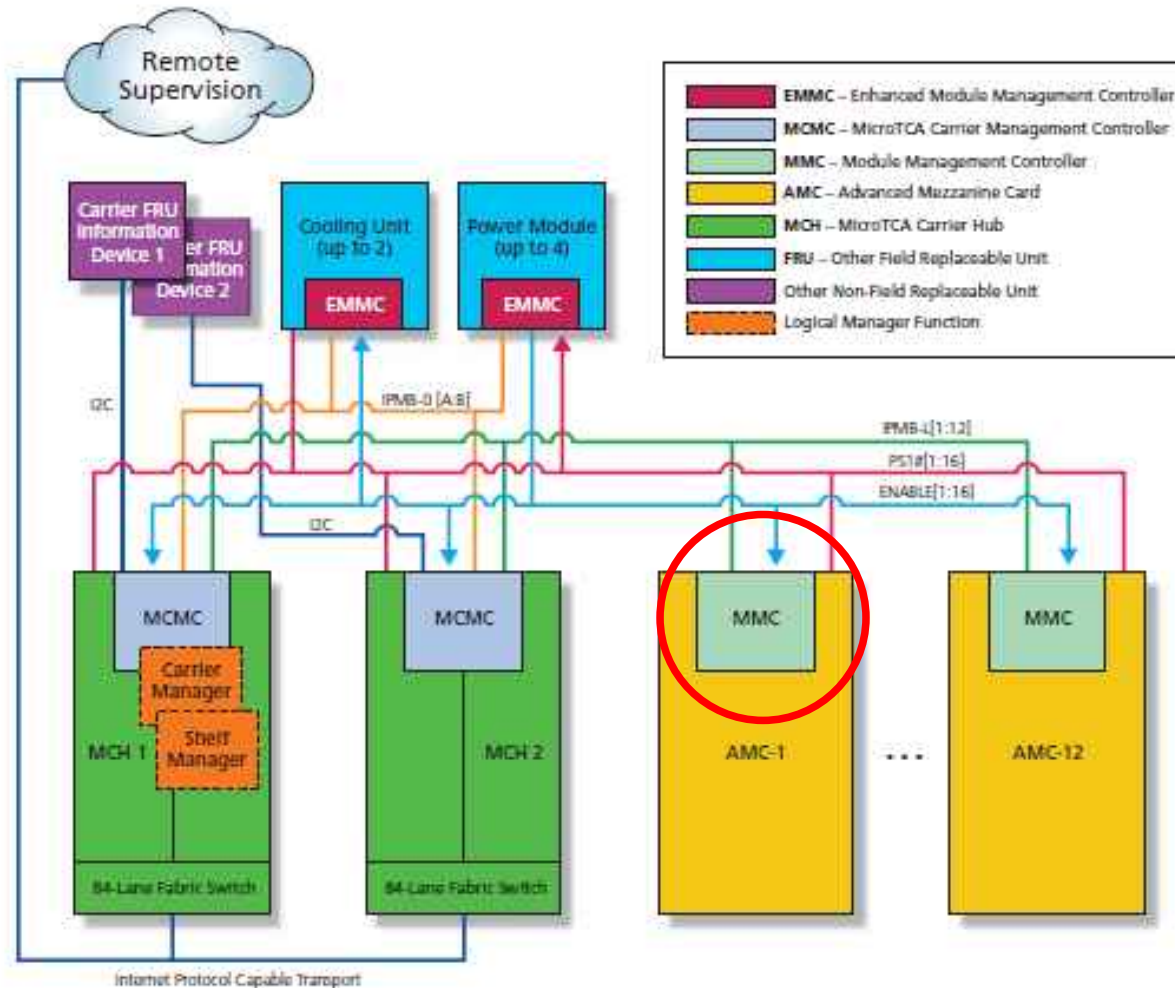


J.-P. Cachemiche, F. Bompard

# Outline

- **MMC role**
- **Development motivations**
- **First implementation**
- **Final version**
- **Software**

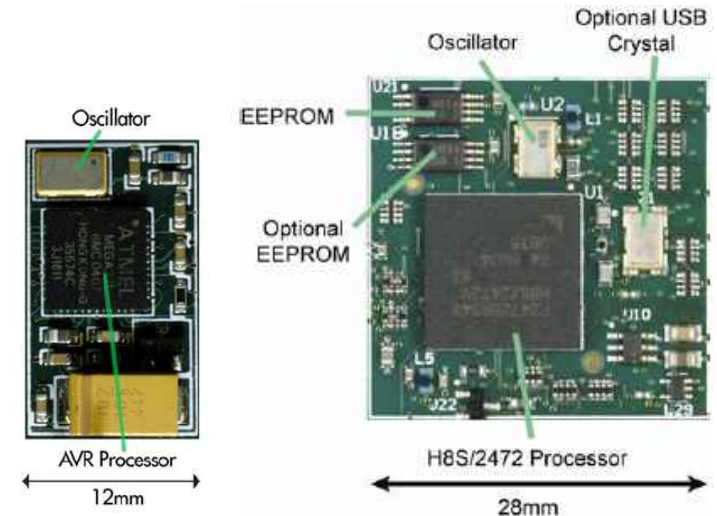
# MMC role



- ◆ Manage hot swap sequence
- ◆ Board asset information
  - Manufacturer,
  - Product name,
  - Model number,
  - Serial number,
  - Geographical information,
  - Version,
  - Features,
  - ...
- ◆ Monitor functions
  - Board and components temperature,
  - Voltage levels,
  - ...
- ◆ Relies on IPMI (*Intelligent Platform Management Interface*) communication standard

# Development motivations

- ◆ Developed our own design because
  - Few commercial solutions
  - All proprietary and single source
  - Or expensive IPs
- ◆ Use of a mezzanine to:
  - Save room on AMC board
  - Speed-up development
- ◆ Received valuable help from Desy who already designed such a functionality (Thanks to Kay Rehlich and Vahan Petrosyan)



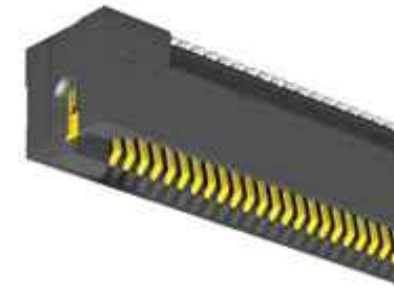
Pigeon Point Reference designs (IPs)

# First implementation

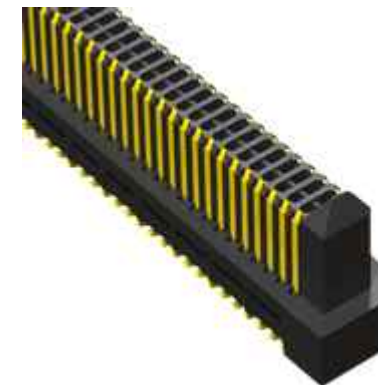


# Final implementation

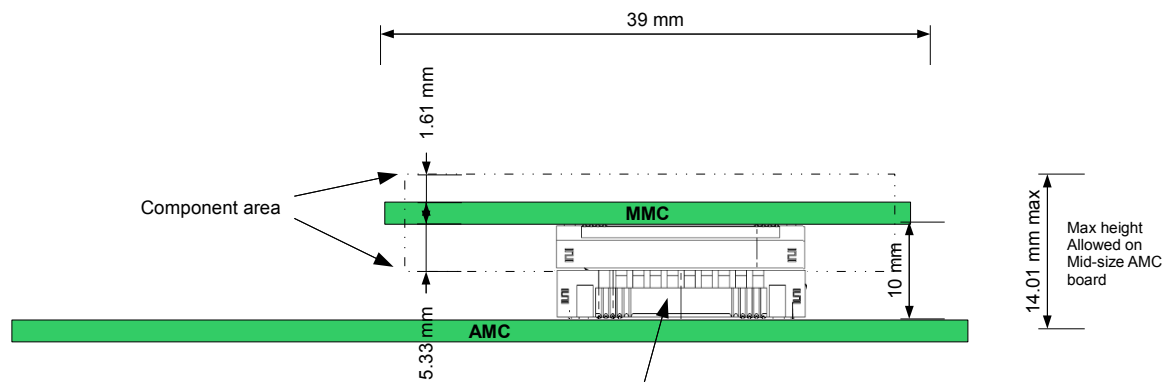
- ◆ Improved connector
  - Number of pins grows from 26 to 40
    - ➔ JTAG management, User-defined pins
  - Mechanical keying and lock
- ◆ Reduced size of mezzanine
- ◆ Dimensions compatible with mid-size AMC



—MMC Mezzanine Samtec connector



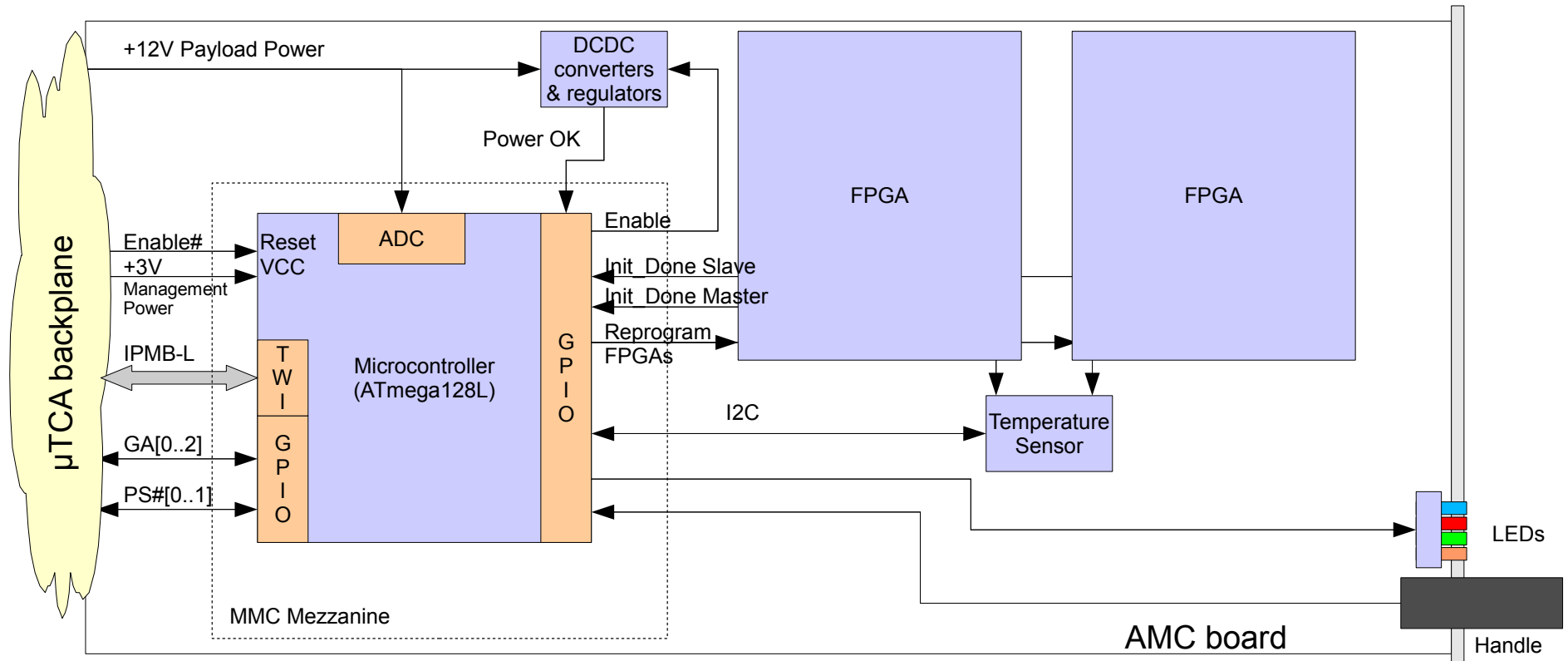
AMC Samtec connector



Samtec ERM8-020-05.0-L-DV-L-TR

See <http://www.samtec.com/ProductInformation/TechnicalSpecifications/Overview.aspx?series=ERM8>

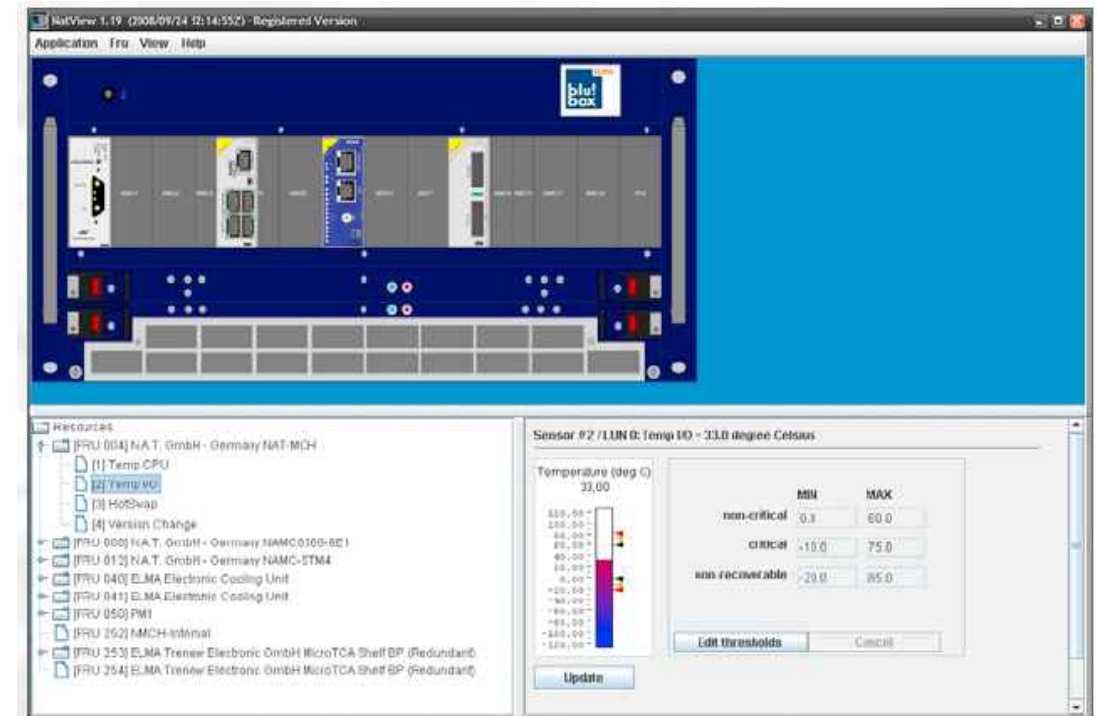
# Example of implementation



LHCb Muon trigger system

# Software

- ◆ Sources courtesy of DESY
- ◆ Some improvement and tuning made by CPPM
  - Board insertion state machine
  - Temperature reading
  - Write FRU information in EEPROM
- ◆ Tested with MCH commercial board
- ◆ Since then, some improvements made by DESY
  - ➔ Need to merge modifications



Communication with MMC  
graphical interface



# Conclusion

- ◆ Industrial version soon to be released.
- ◆ Possibility of shared design/improvements under the agreement from DESY
- ◆ CPPM can produce the boards
- ◆ User support preferably managed by CERN