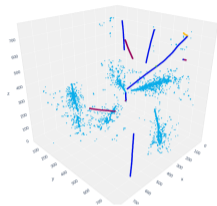


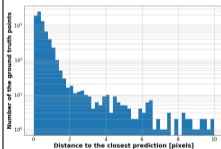
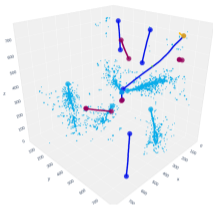
Particle types



Particle type	Accuracy
HIP	98.2 %
MIP	99.4 %
Showers	99.2 %
Delta	96 %
Michel	94.7 %
Total	99 %

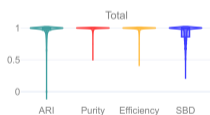
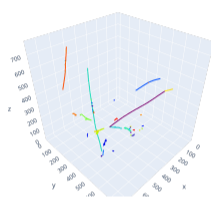
See paper for details:
[arXiv:1903.05663](https://arxiv.org/abs/1903.05663)

Point proposal



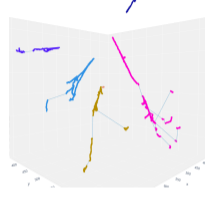
	< 10 voxels
Eff.	97.2 %
Pur.	97.6 %

Dense clustering



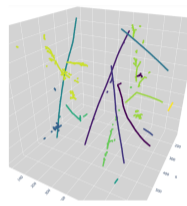
	Mean
Eff.	99.0 %
Pur.	99.1 %
ARI	95.2 %
SBD	91.8 %

Shower clustering



	Mean
Eff.	99.2 %
Pur.	98.3 %
ARI	96.2 %

Interaction grouping



	# ν	Mean
Eff.	1	98.8 %
	2	97.6 %
	4	95.6 %
Pur.	1	99.4 %
	2	99.3 %
	4	99.3 %
ARI	1	95.6 %
	2	93.2 %
	4	88.0 %

$\nu = 2$ for this image is the expected density in DUNE-ND