

I FEEL
SLOVENIA



GREEN.
CREATIVE.
SMART

INTRA LIGHTING

Bojan Jurina

SLOVENIA@CERN

9. - 10. October 2019



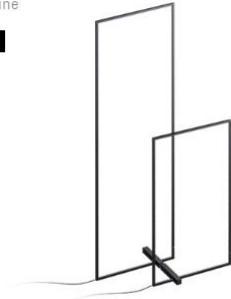
all visible



Vitka

Thin line

NEW



Night & Day

Changes by turning



Biba

Tiny sophistication

NEW



Dawn

Morning light

NEW



Wave

Bored of being straight

NEW



Pipes

Simple inside, clever outside



Futon

See the silence

NEW



Acousto

Control your sound



Light where it is needed,
when it is needed and
as much as needed

The right light for the right situation



Supporting well-being



Architectural graphics



Intra lighting



Established in
1989

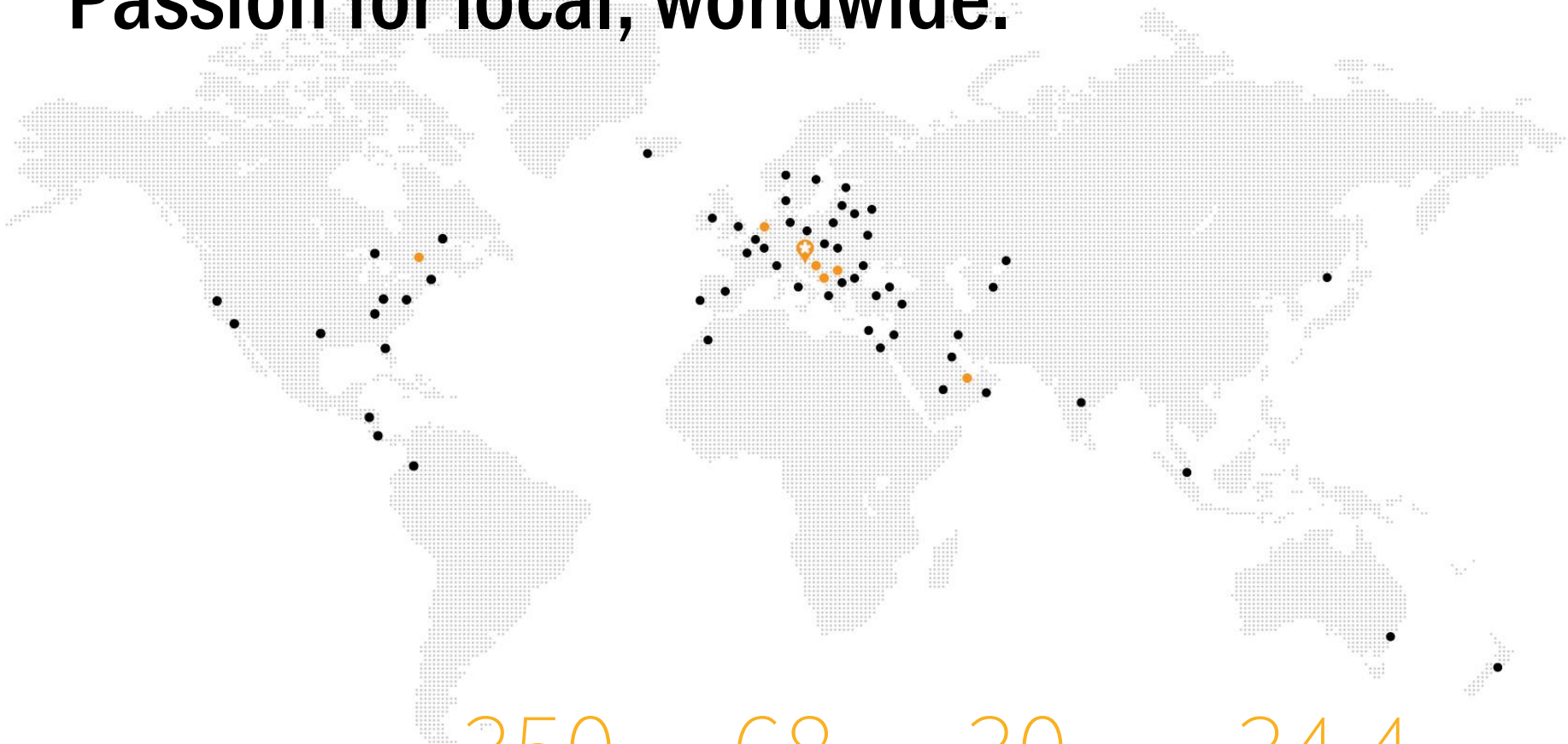
Intra Lighting headquarters
Šempeter pri Gorici, Slovenia

The team behind the brand



Knowledge
Creativity
Experience
Passion

Passion for local, worldwide.



350

Employees

68

Countries

30

Years of experience

34,4

mio EUR turnover

Offices



Facebook, Dublin, Ireland Architect: AARPUS Design Studio

ISS Architecture: Dorit Weinbren and Tamar Puzis
Ljubljana Stock Exchange Architecture: Kosi in partnerji, d.o.o., Arhitekti

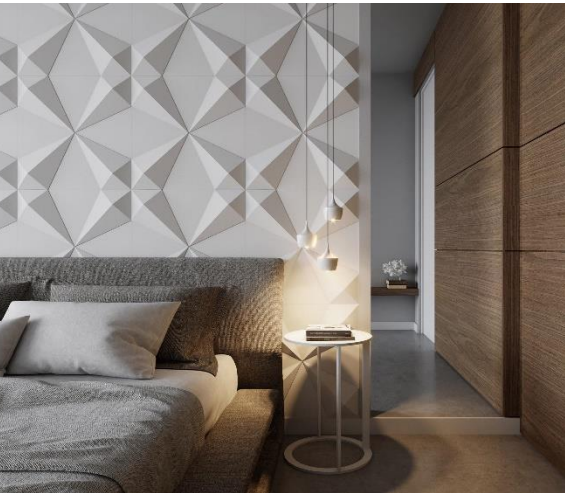
Retail



Oceania Mall, Moscow, Russia

Samsonite, Amsterdam, The Netherlands
Architecture: i29 Interior Architects

Hospitality



WTC Shiphol, Amsterdam, The Netherlands Architect: D/Dock

Exhibitions



Muzej vučedolske kulture, Vukovar, Croatia Architecture: Radionica arhitekture + Vanja Ilić



Estonia pavilion, Expo Milano, Italy Architecture: Kadarik Tüür Arhitektid

Education



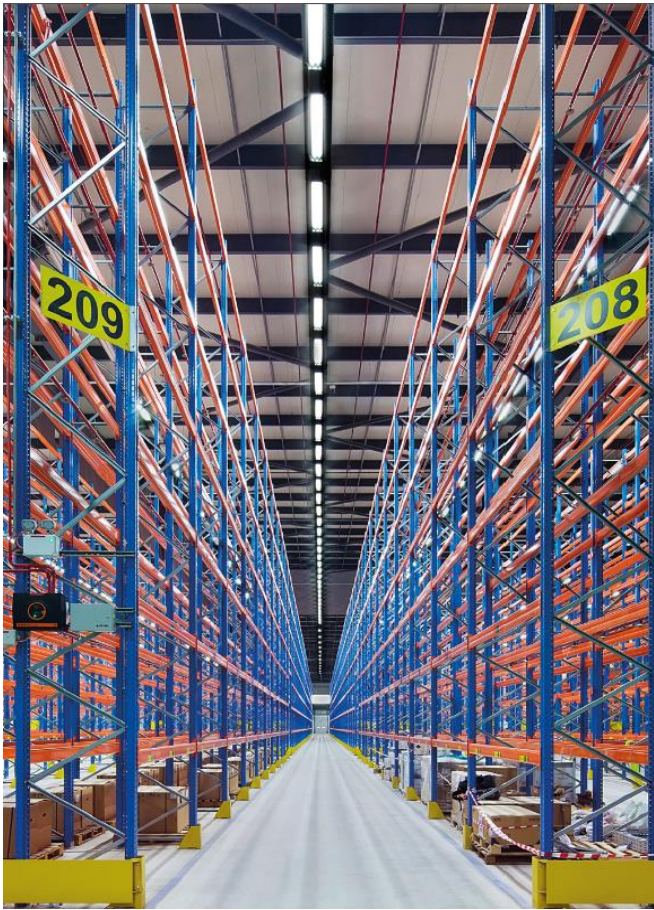
Macquaries university Sydney, Australia Architecture: Architectus

Kindergarten Poljčane, Poljčane, Slovenia

Architecture: MODULAR arhitekti

Park Mains, Erskine, United Kingdom Architecture: Holmes Miller

Warehouses and Industrial halls



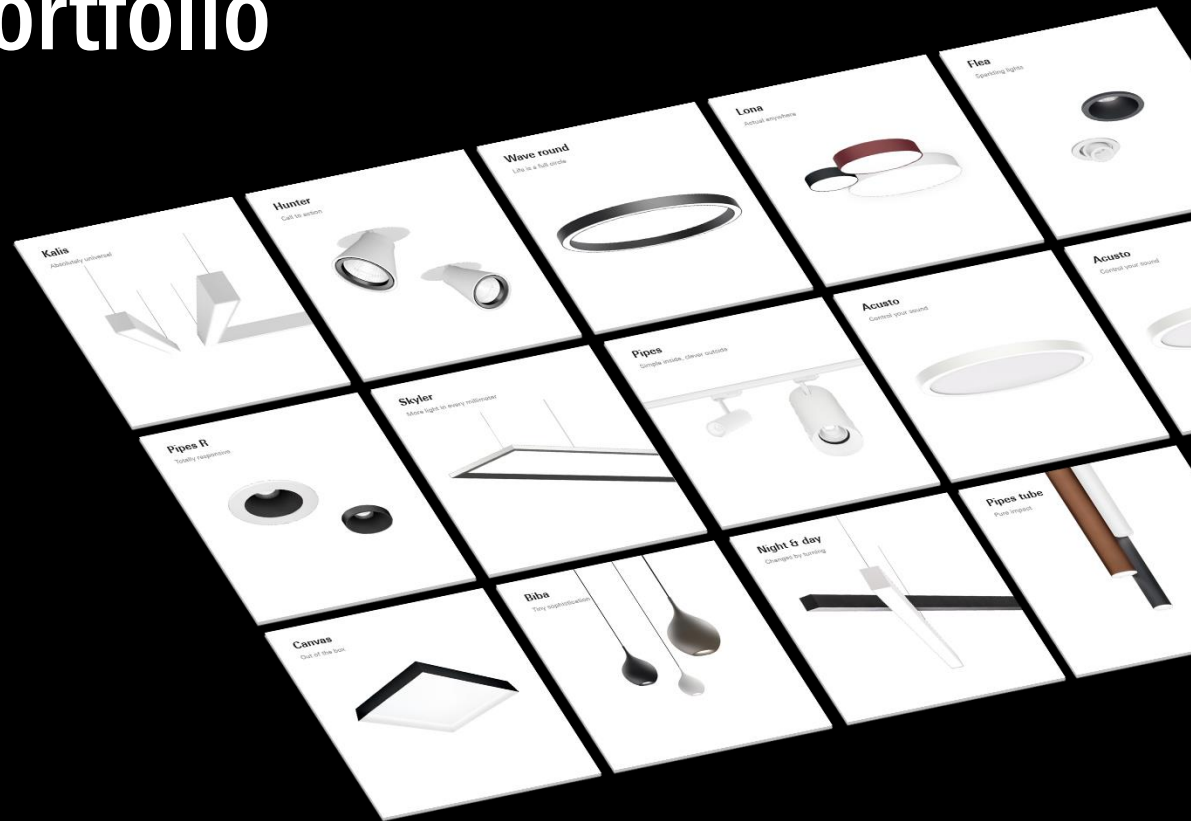
KEA, Dubai, UAE **Developer:** GRDI, **Consultant:** Kelly Taylor Associates, **Lighting design:** Reynard Lighting

Pipistrel, Slovenia **Architecture:** Studio DeGressi Gorizia

Wide product portfolio

4 - 10

New product families
every year



Made in Europe



100%

Tested products

ISO

Certified

26

Thousand m²

Laboratories

Among the biggest in Europe
Exact measurements



Quality in every detail

100 % tested products

High internal quality standards

Verified & certified suppliers

7- year warranty



Focusing green

93%

Recyclable products

60%

Renewable energy

User focused support

Product presentations



New catalogue

20 new product families

18 languages

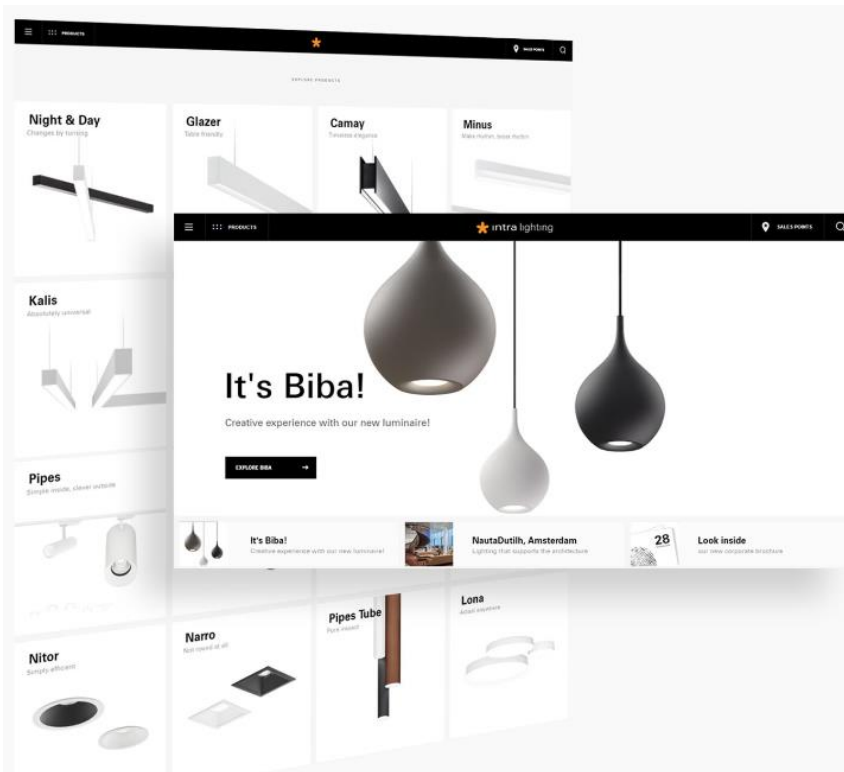
EN / DE / NL / FR / SI / CR / IT / ES / RU / RS

NO / SE / DK / FI / CZ / PL / SK / HU

New technical content



Web page



User focused
All that you need in one place
Easy to use / easy to find

3 ways to discover a product

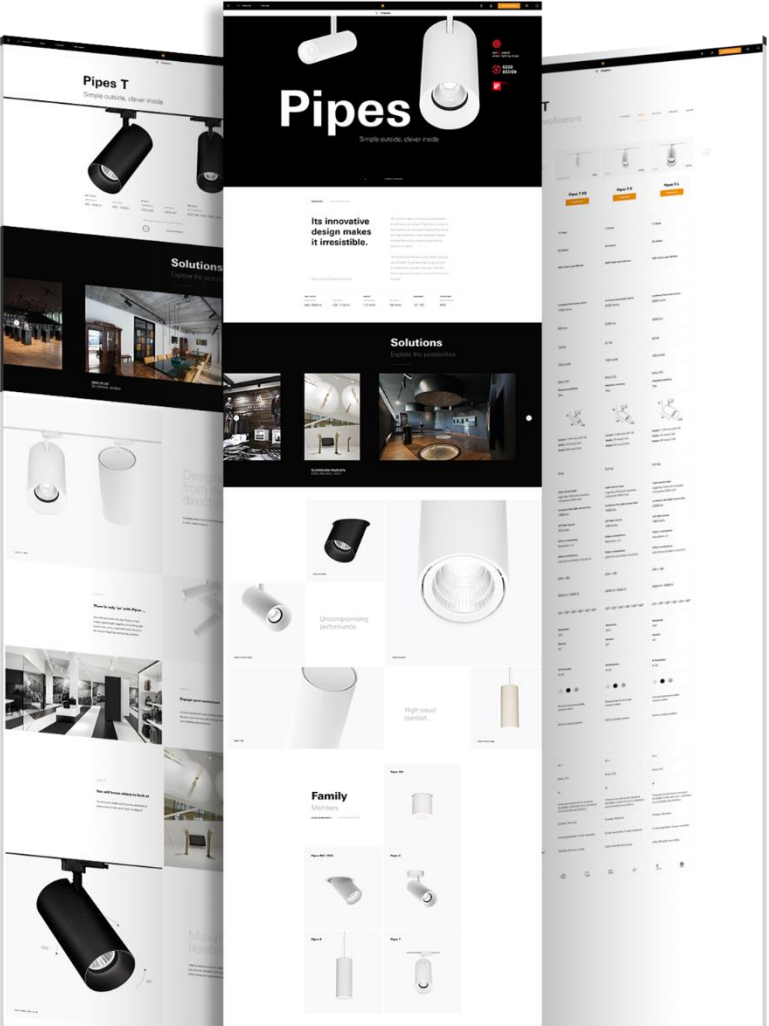


Image
Visual
Technical

10 seconds to the product code

01. Select Features X RESET ALL

LUMINAIRE TYPE:

L	S
XC	XS

IP PROTECTION :

IP 20	IP 44
-------	--------------

OPTICS:

38°	60°
------------	-----

LED COLOUR:

827	830	840
-----	------------	-----

NOMINAL LUMINAIRE LUMINOUS FLUX:

600 lm

COLOUR FUNNEL:

Light output table

LED	UGR	Beam	Total luminous flux	Luminaire efficacy (LPI)
827	19	38°	600 lm	100 lm/W
830	19	38°	600 lm	100 lm/W
840	19	38°	600 lm	100 lm/W

UGR values

S = 0,22M
0,22M, 0,22M
0,22M, 0,22M

54 product families
250.000 codes
One database
Complete documentation

Intra Constructor



Personalize the system to your needs
Less than 60s to build
No mistakes, no forgotten parts
All documentation prepared

3D BIM

The screenshot displays the Intra Lighting BIM library website interface. At the top, there is a navigation bar with the logo and links for 'Browse BIM objects', 'Apps', 'Press', and 'Info'. A 'Sign in / Register' button is located on the right. A blue banner below the navigation bar contains a cookie consent message: 'We are using cookies to provide our services. By using our services you agree to our use of cookies'. Below the banner is a search bar and a row of icons representing different BIM object categories. The main content area features a 'Filter products' sidebar on the left with categories like 'Brands (970)', 'BIM object categories (1)', 'File types (7)', 'Regions (8)', and 'Types (1)'. The main grid shows 20 product cards, each with a star icon, a product image, a name, and the text 'Intra lighting'. The products are arranged in two rows of ten. The first row includes models like Atos T, Camay SDI, Camay W, Camay WDI, Gyon R, Gyon S, Gyon SDI, Atos C, Atos D, and Atos P. The second row includes models like Atos PQ, Flea C, Flea D, Flea FP, Flea FT, Flea P, Flea PQ, Flea Q, Flea T, and Flea TQ. A 'Missing a manufacturer?' button is visible in the top right of the product grid area.

Video on how to place [BIM Objects](#) or Access to [BIM Library](#)

Enhance presentation



Solving lighting challenges of our clients

Brands that trust us

Google

facebook.

 Microsoft

Ferrari

VOLVO


ROLEX

J.P.Morgan

 **vodafone**

BANG & OLUFSEN

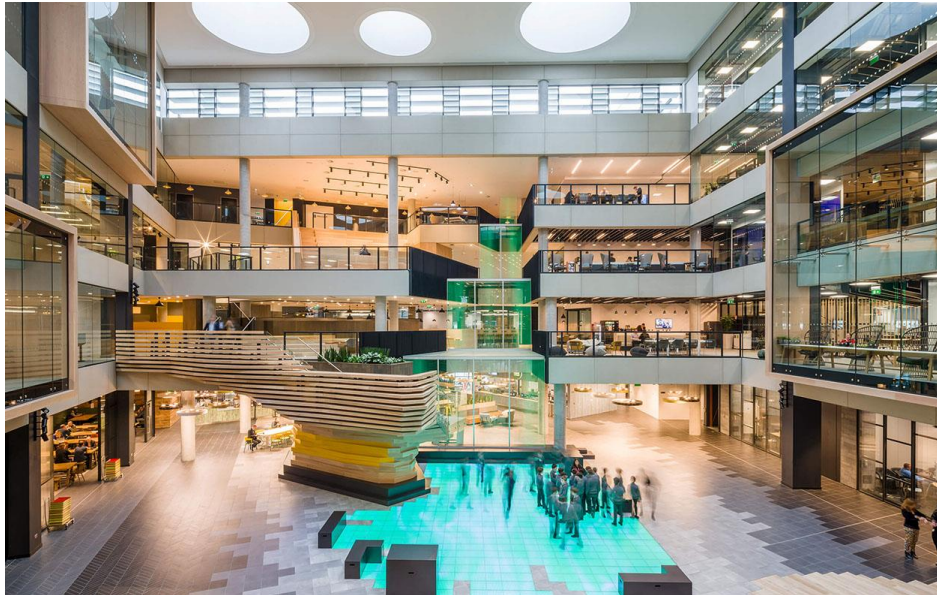



HSBC



Microsoft

One Microsoft Place, Dublin, Ireland



NautaDutilh

Amsterdam, The Netherlands



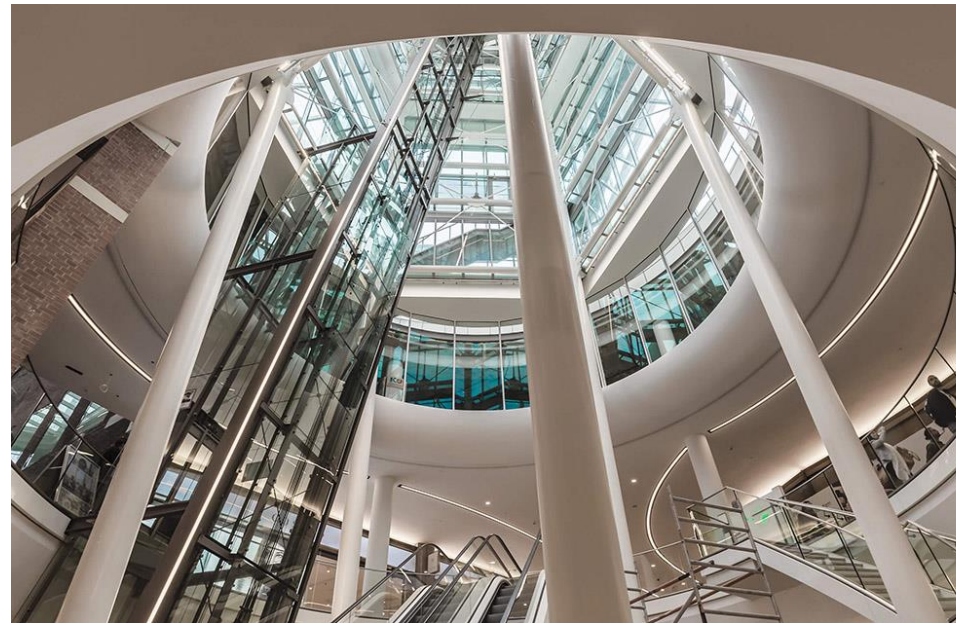
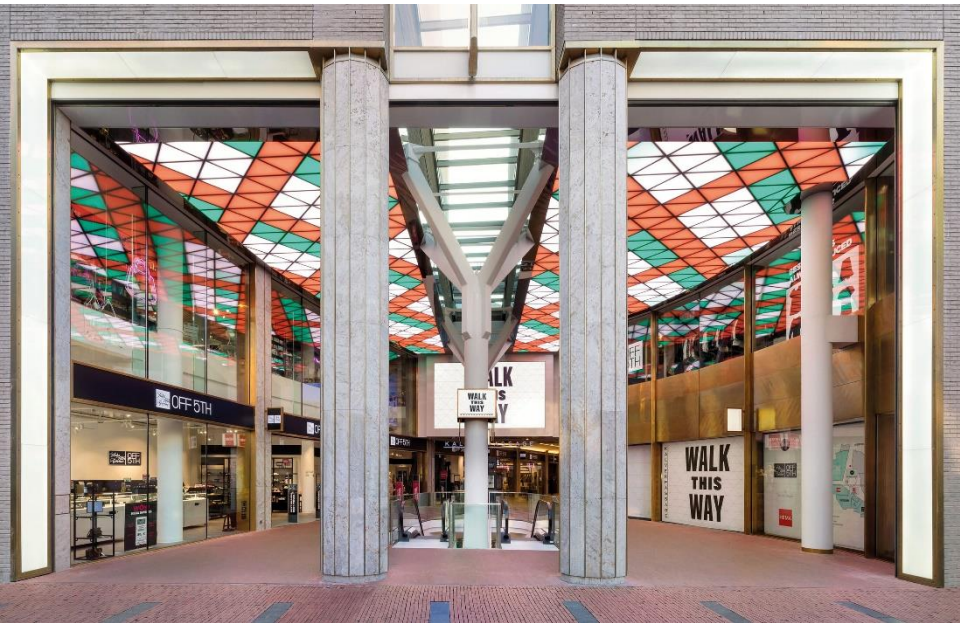
International House Sydney

Sydney, Australia



Kalverpassage

Amsterdam, The Netherlands



Expo 2020

Dubai, United Arab Emirates



Facebook

Nova Atria South, Dublin, Ireland



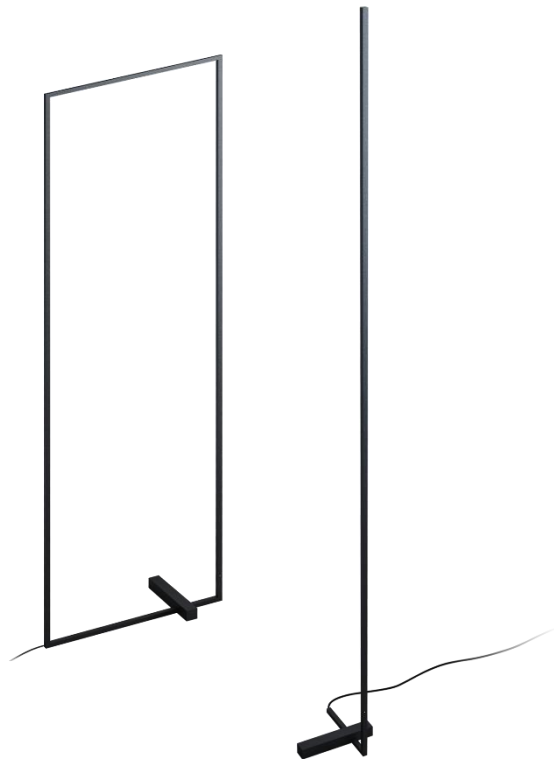
Ferrari

Maranello, Italy



Achievements & Future plans

Product awards



**GOOD
DESIGN
AWARD**
TOKYO



Product awards



reddot award 2019
winner lighting design



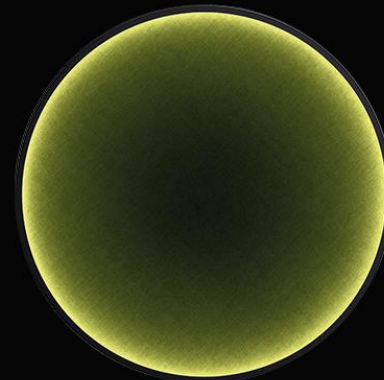
Product awards



THE MOST
PRESTI-
GIOUS
WORLD
DESIGN
AWARD



THE CHICAGO
ATHENAEUM
MUSEUM OF
ARCHITECTURE
AND DESIGN



Silver Gazela

Silver Slovenian
Gazela: Award for
the fastest growing
companies in
Slovenia



Marketing Excellence

Among 3 Top Companies
in B2B Category



Best digital tool: Intra Constructor



Websi – 1st Place
for Intra Constructor in
a Digital Tool
Category



Business Stars Award

Among 10 finalists for
Delo's Business Stars
Award



Entering the US and German market



New factory & Experience centre





all visible