

ALPHA MAGNETIC SPECTROMETER

RWTHAACHEN
UNIVERSITY



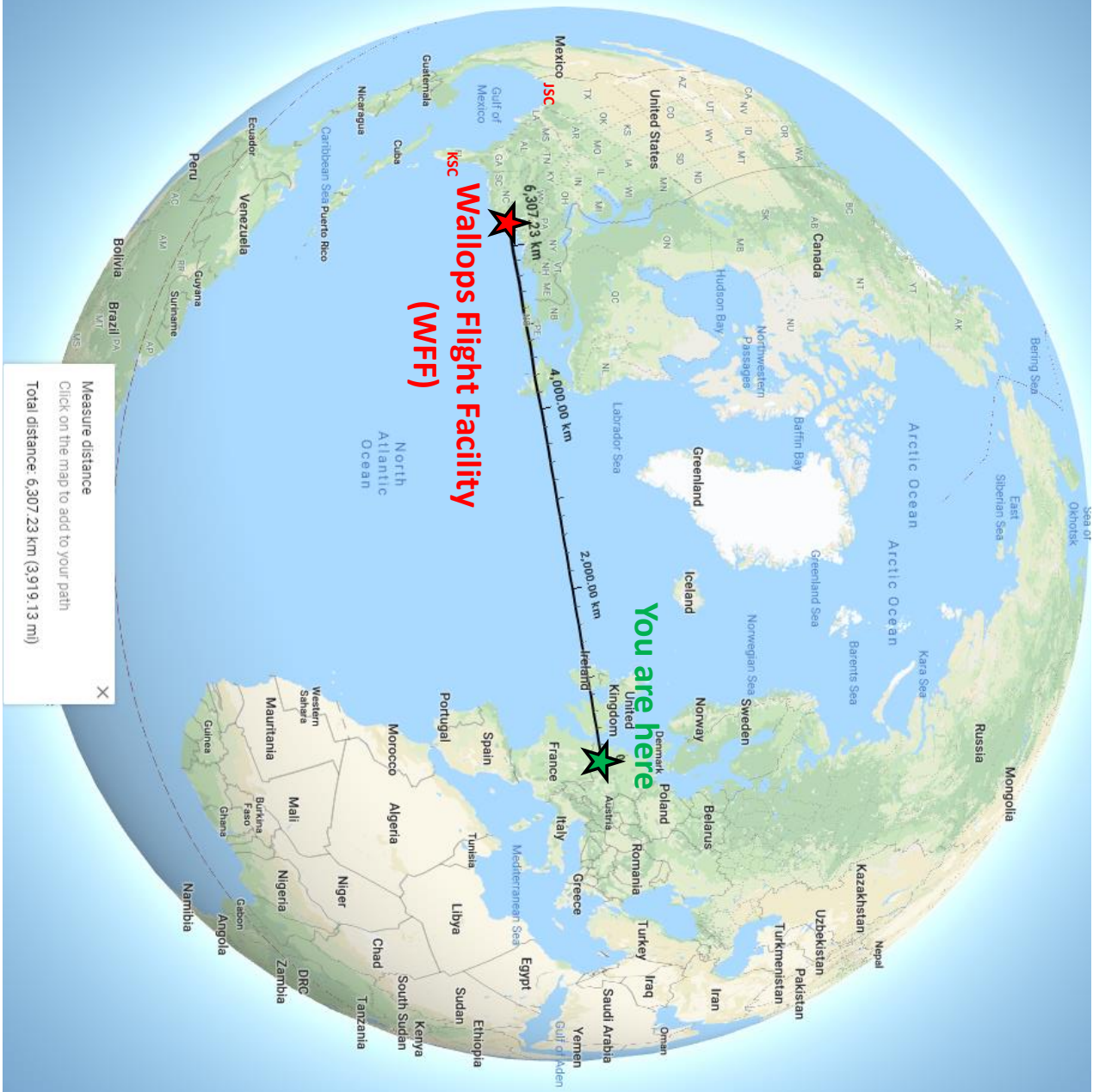
AMS UTTPS Processing at WFF

Ken Bollweg/EAS

NASA/JSC AMS Project Office (APO)

August 5, 2019 @ RWTH Aachen

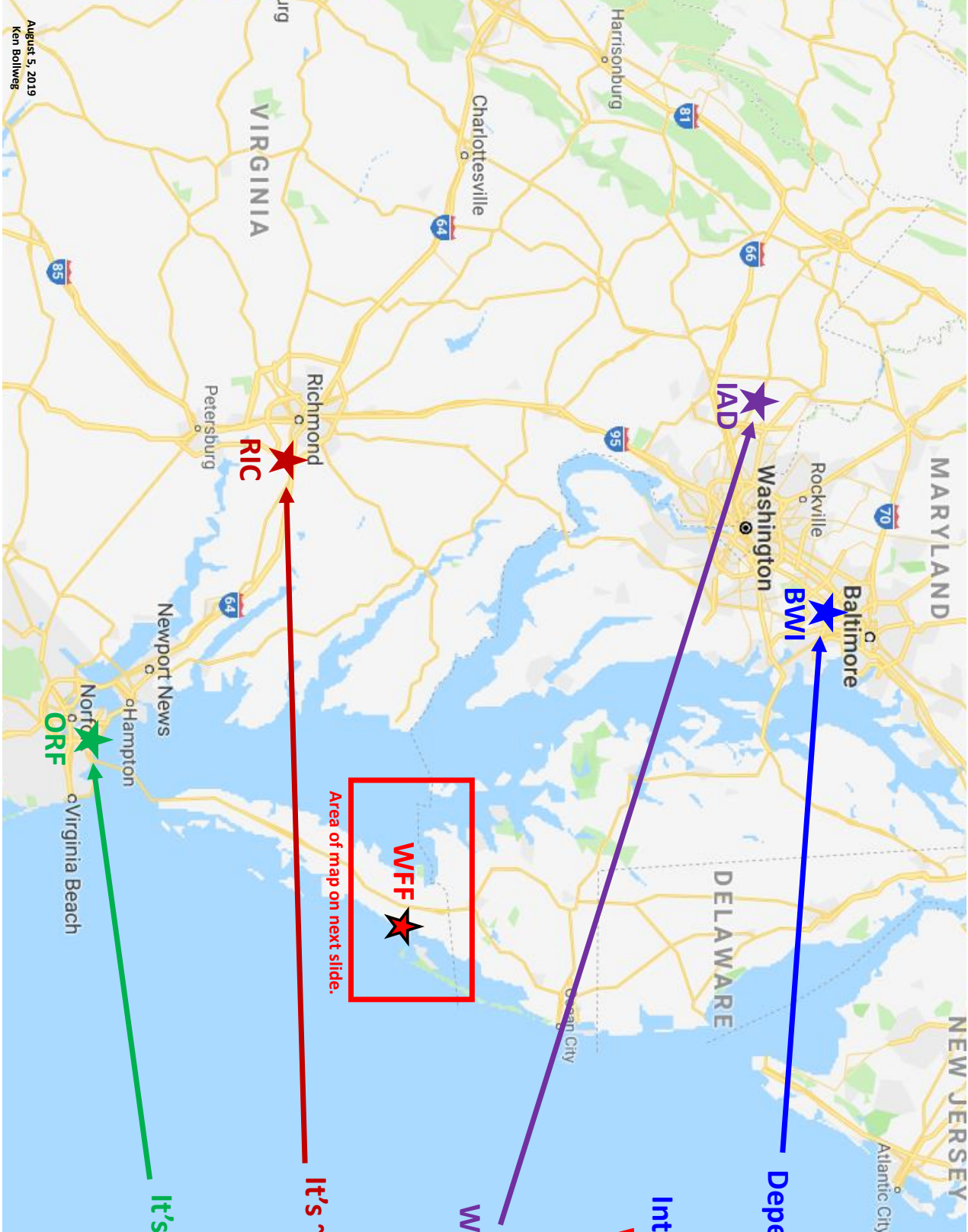




Wallops Flight Facility (WFF)

You are here

Measure distance
 Click on the map to add to your path
 Total distance: 6,307.23 km (3,919.13 mi)



Depending on traffic, it's a ~2.9 to 4.2 hour drive from the Baltimore/Washington International Airport (BWI) to the **Wallops Flight Facility (WFF).**

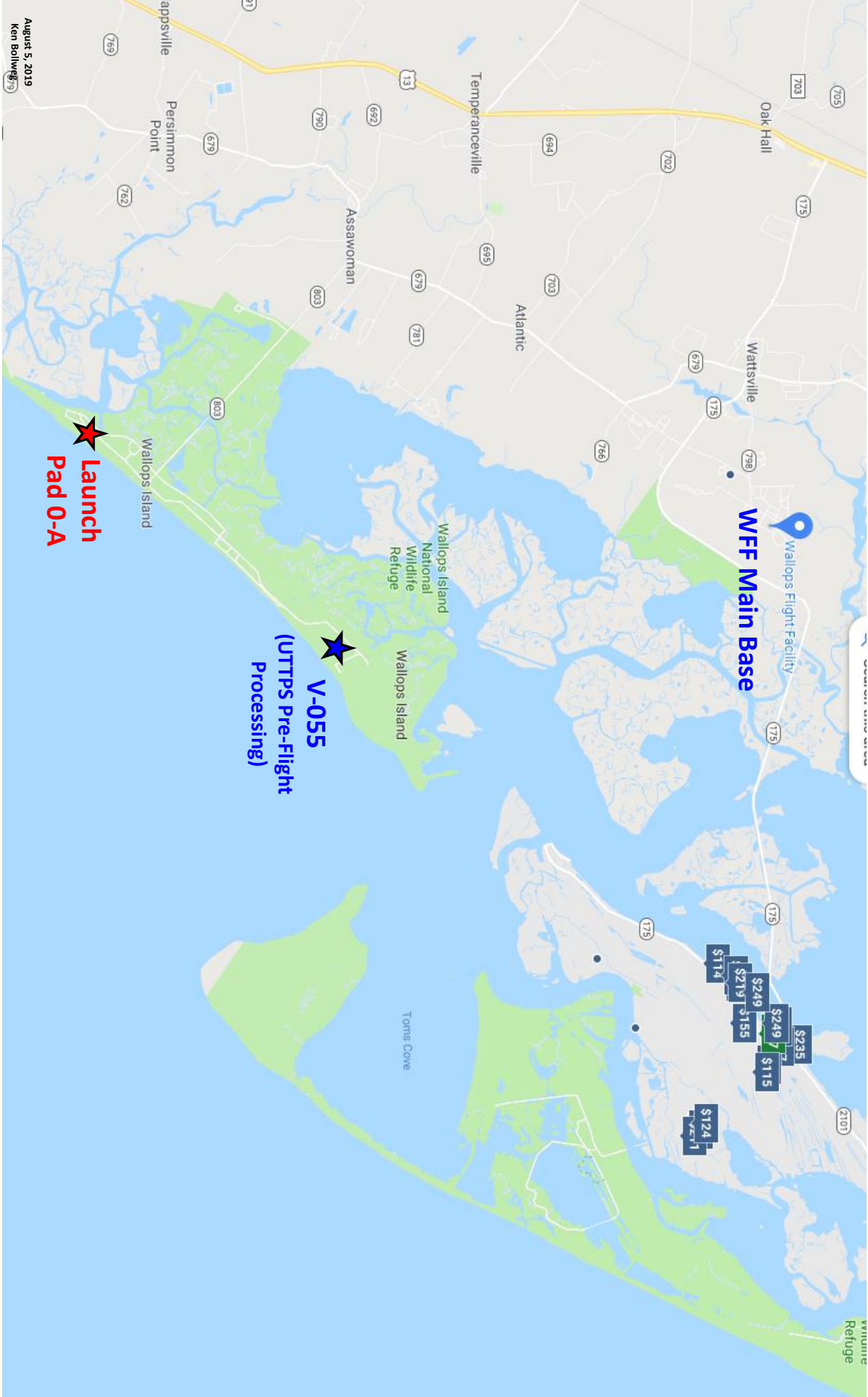
It's ~3.3 to 4.6 hours from Washington Dulles International Airport (IAD).

It's ~3.3 to 4.3 hours from Richmond International Airport (RIC).

It's ~1.8 to 2.6 hours from Norfolk International Airport (ORF).

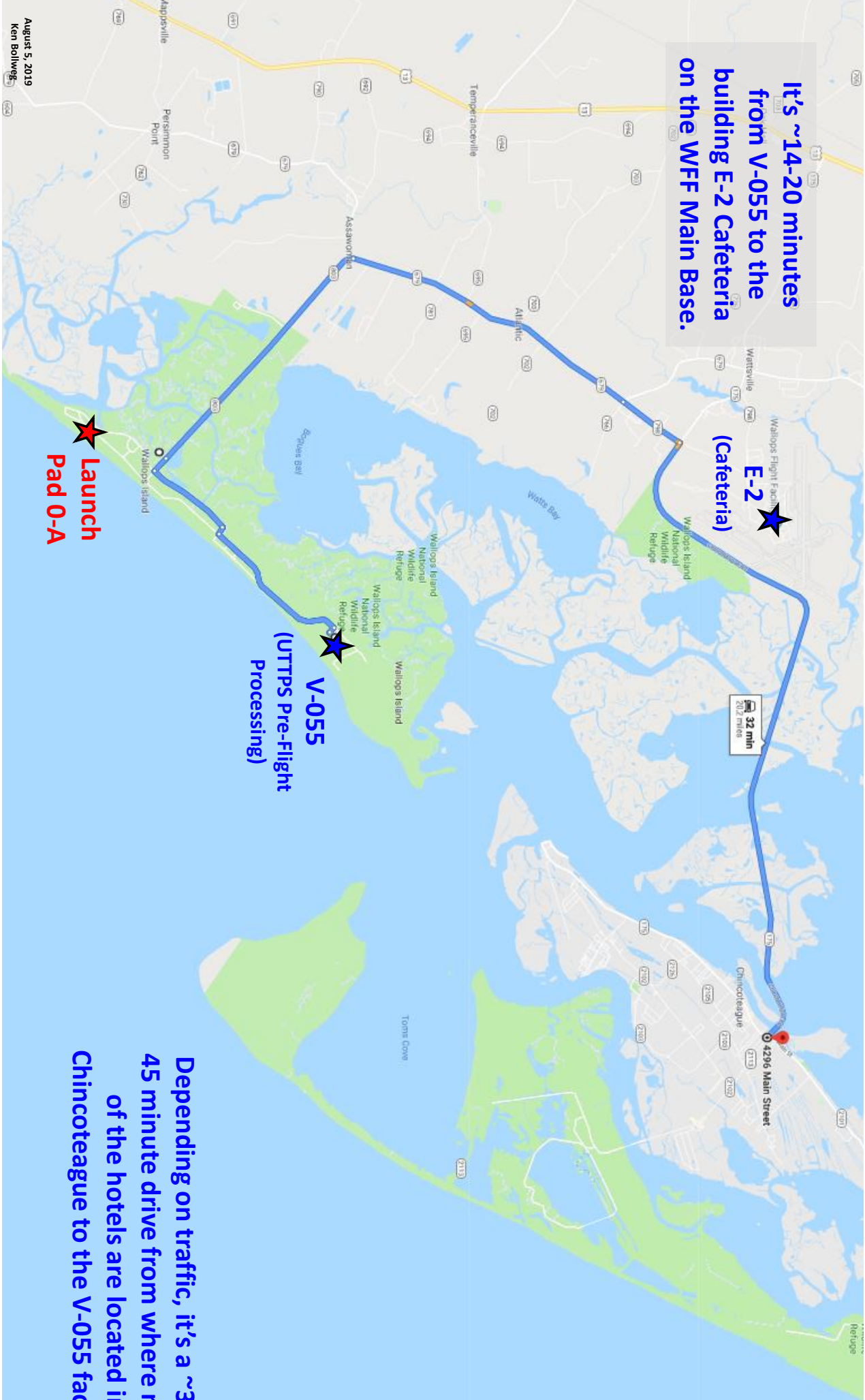


Area of map on next slide.



August 5, 2019
Ken Bollweg

**It's ~14-20 minutes
from V-055 to the
building E-2 Cafeteria
on the WFF Main Base.**

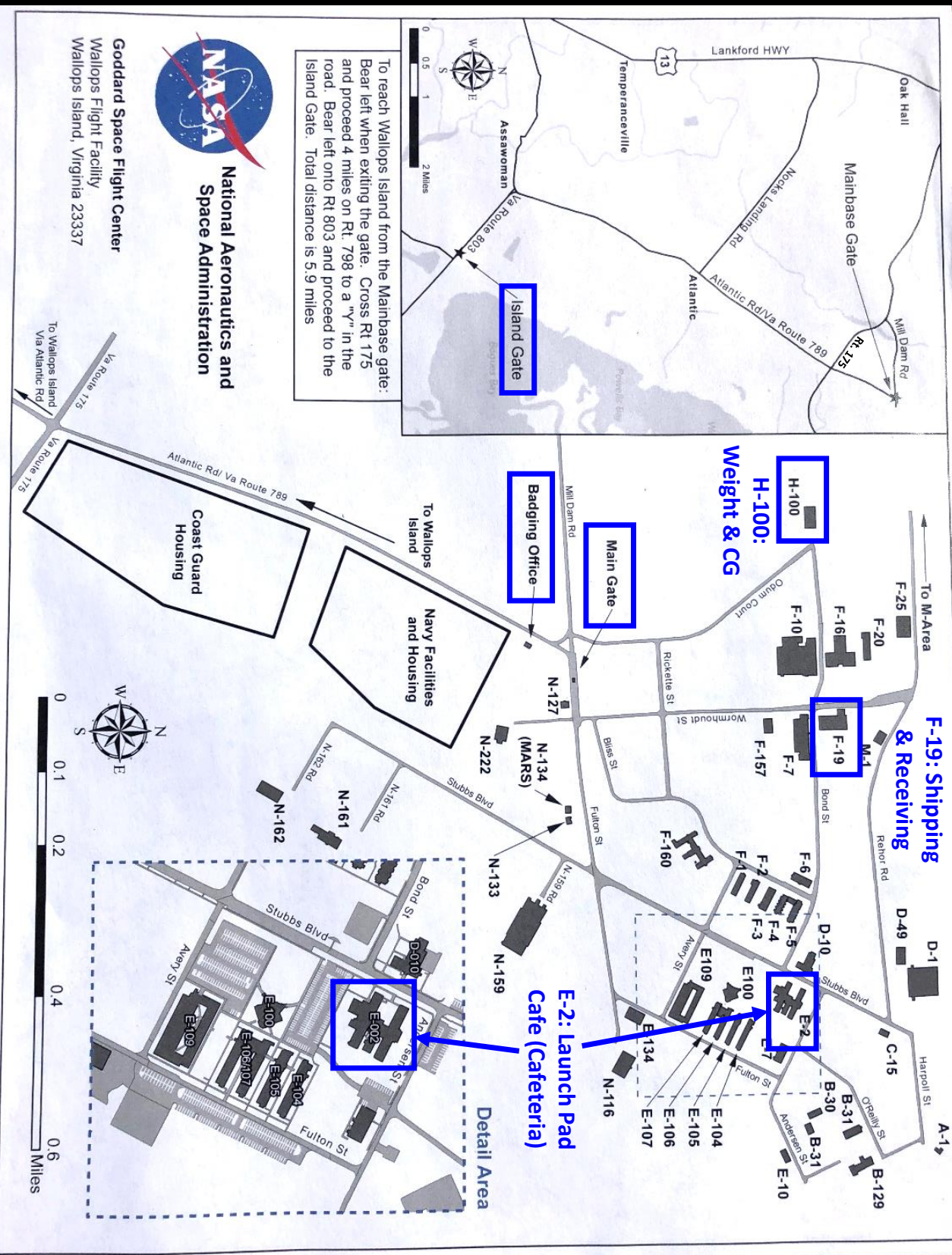


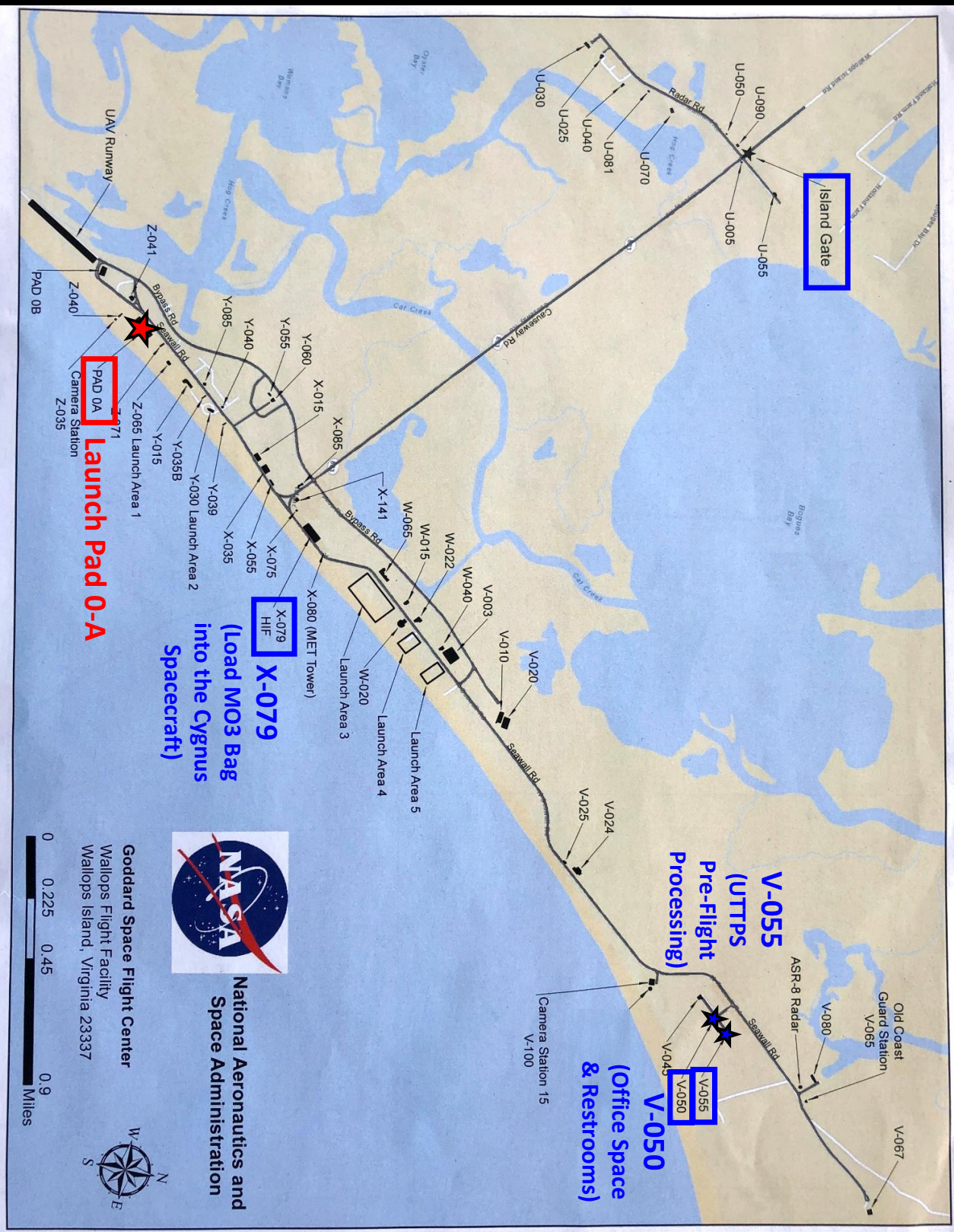
**Launch
Pad 0-A**

**V-055
(UTTPS Pre-Flight
Processing)**

**E-2
(Cafeteria)**

**Depending on traffic, it's a ~30 to
45 minute drive from where most
of the hotels are located in
Chincoteague to the V-055 facility.**







Launch Pad 0-A



Walllops Island

V-050 & V-055

Wildlife Refuge

V-055
(UTTPS Pre-Flight Processing)

~130 m

V-050
(Office Space & Restrooms)



The high bay clean work area
dimensions are ~20 x 13 m

August 5, 2019
Ken Bollweg

V-055 Facility





August 5, 2019
Ken Bollweg

V-055 Facility

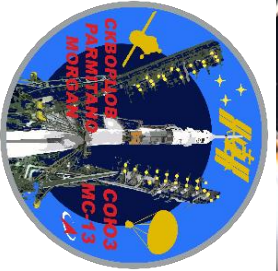




Drew Morgan of NASA, Alexander Skvortsov of Roscosmos, and Luca Parmitano of the European Space Agency launched on Soyuz 595 on July 20th and docked with ISS ~6.3 hours later.



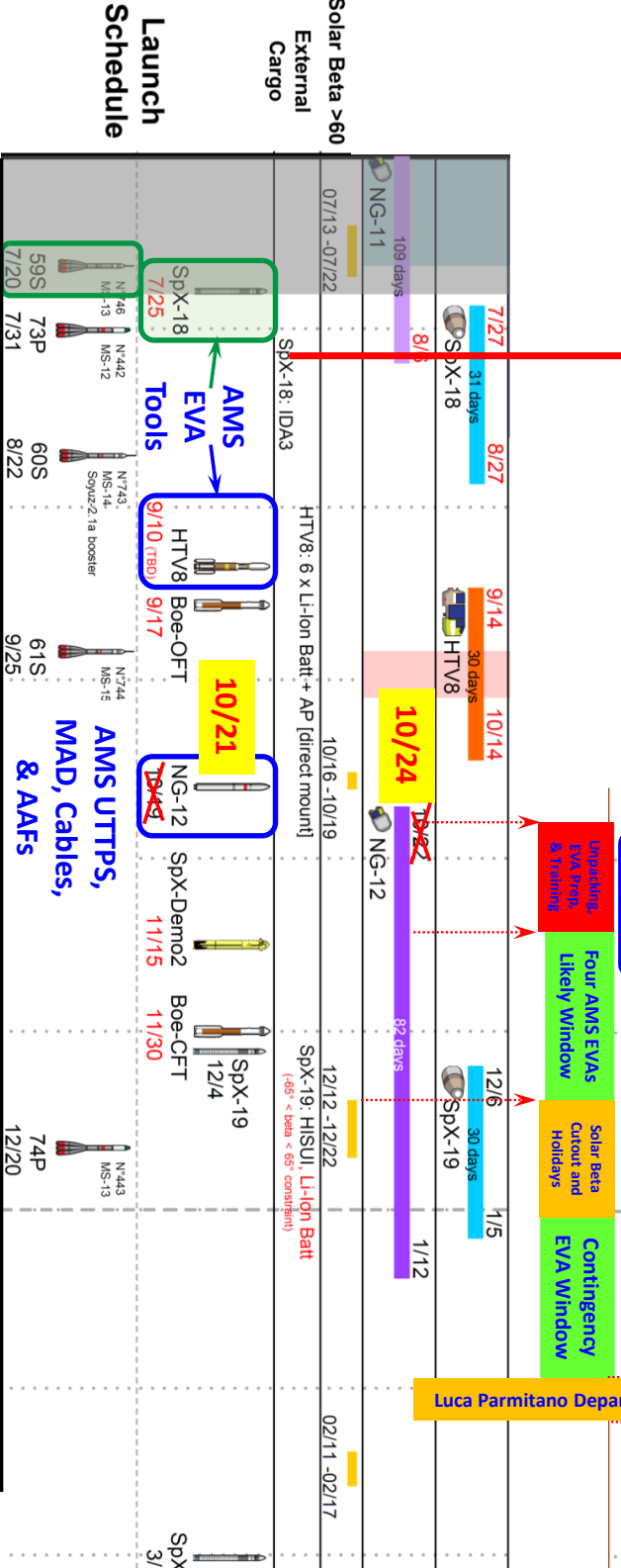
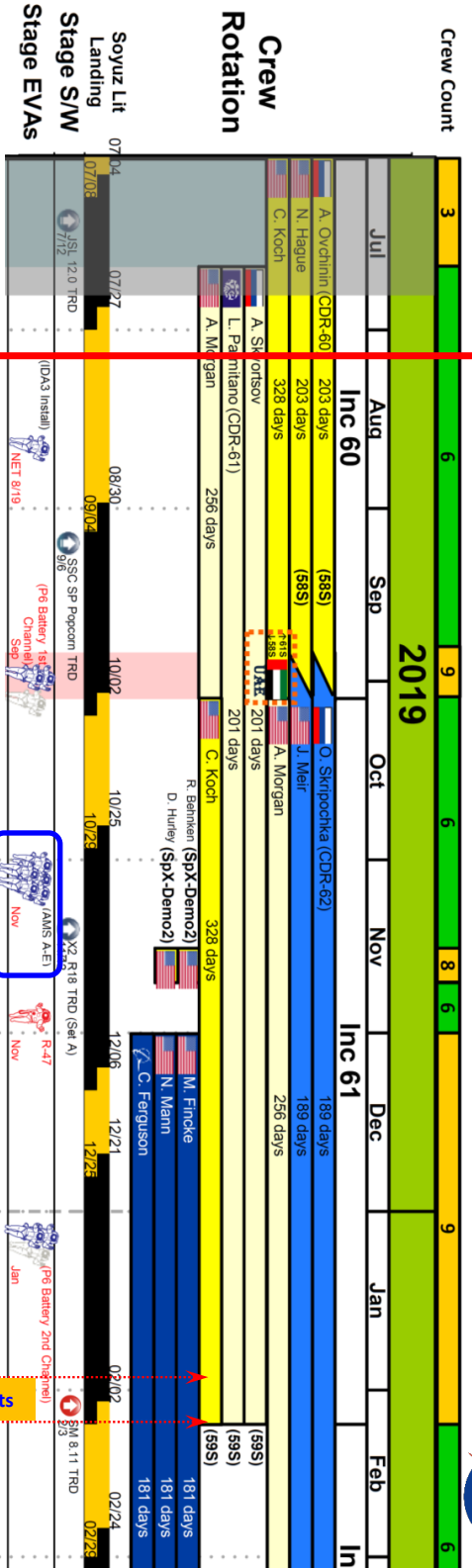
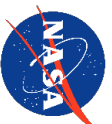
August 5, 2019
Ken Bollweg



July 25

Today, August 5th

4 Launches for the AMS EVAS



AMS EVA Crew

AMS UTTPS Processing Milestones at WFF

<u>Date</u>	<u>Day</u>	<u>Milestone</u>
Sep 3	Tue	AMS UTTPS Flight Hardware & GSE Arrival at F-19 on the WFF Main Base (Sep 2 nd is a holiday).
Sep 5	Thu	Personnel arrival.
Sep 6	Fri	Badging and orientation. UTTPS Flight Hardware & GSE Arrival at V-55 Facility on Wallops Island.
Sep 9	Mon	Unpack and setup UTTPS Flight Hardware & GSE in V-55 facility.
Sep 10	Tue	Begin Post-ship/Pre-flight functional tests.
Sep 13	Fri	Complete Post-ship/Pre-flight functional tests.
Sep 16	Mon	Disassemble test set-up and start packing GSE for return to RWTH Aachen.
Sep 17	Tue	JSC VITT & EVA inspections, complete GSE packing, & contingency.
Sep 18	Wed	GSE packing & contingency day.
Sep 19	Thu	Turnover from APO to CMC; pack UTTPS and other hardware into flight foam & MO3 bag. Pack anything else that needs to go back to RWTH Aachen or JSC.
Sep 20	Fri	Weight & CG at H-100? Turnover from CMC to NG.
Oct 1	Tue	UTTPS/AAF MO3 bag processed for loading into the Cygnus (~11 days later).
Oct 21	Mon	NG-12 Launch to ISS <i>(This was just moved by two days!)</i>

AMS Collaboration, APO & EVA Personnel at WFF

AMS Collaboration

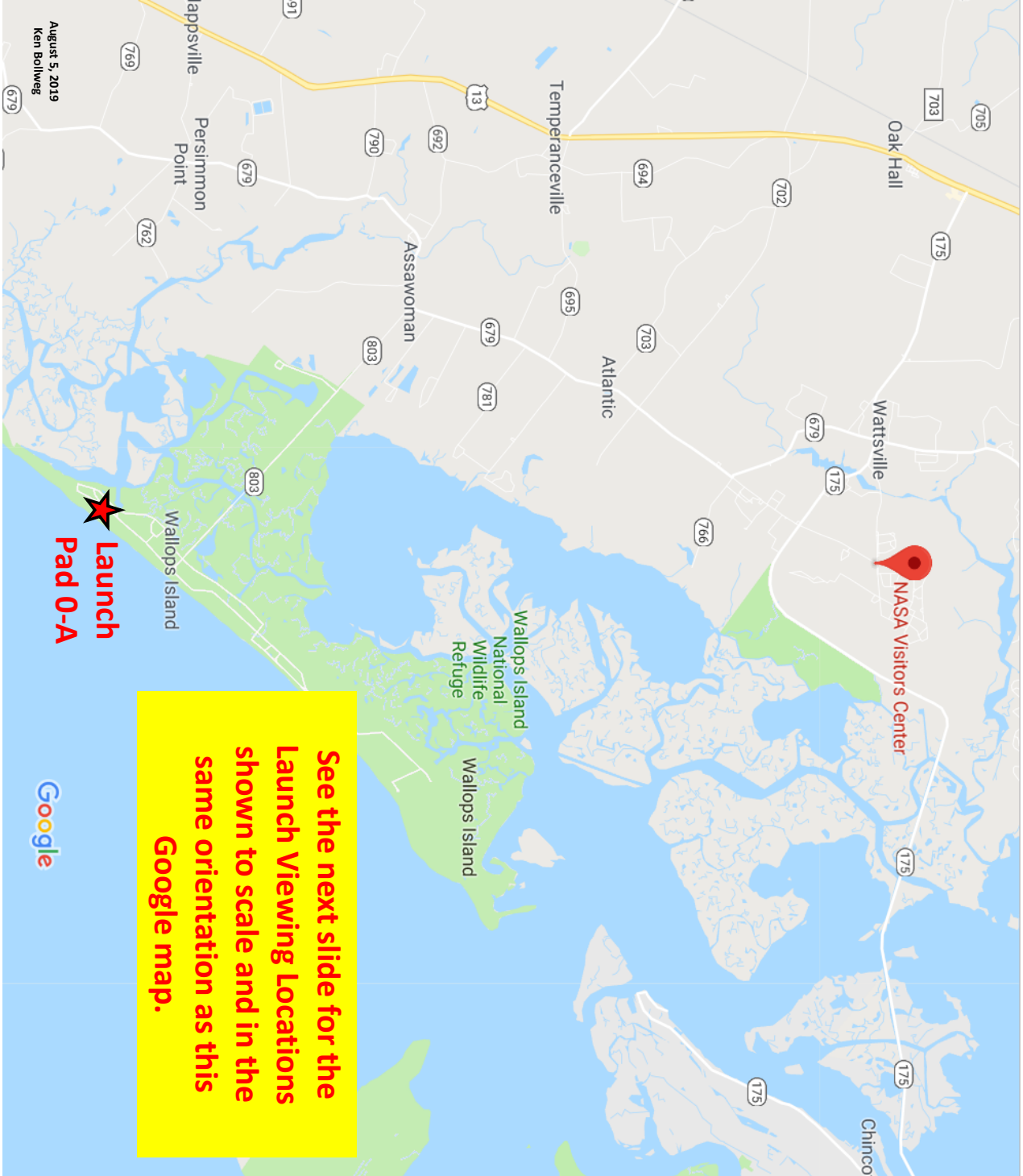
Prof. Sam Ting
Dr. Susan Ting
Mike Capell
Christine Titus
Xudong Cai
Vladimir Koutsenko
Carlos Solano
Zhan Zhang
Alexander Kulemzin
Chan Hoon Chung
Prof. Stefan Schael?
Prof. Klaus Luebelsmeyer?
Thorsten Siedenberg?
Georg Schwering?
Lorenzo Mussolin?
Bruna Bertucci?
Giovanni Ambrosi?

AMS Project Office (APO)

Ken Bollweg
Rick Hardy
Doni Dotson
Tim Urban
Phil Mott
Joe Kastelic
Craig Clark
Marc Granson
Molly Harwood
Eric Harvey?
Trent Martin?
John Heilig?
Hsing Ju?
John Hostetler?
Tomas Garcia?
Gabino Torres?

JSC EVA & VITT

Tara Jochim
Chris Cassidy
Jeremy Hansen
Anne Tripathi
Brian Mader
John Mularski
Ken Neiss
Hung Nguyen
Andrew Hood
Heather Bergman
TBD



See the next slide for the Launch Viewing Locations shown to scale and in the same orientation as this Google map.

Launch Viewing Locations

For more information call the Chamber of Commerce at 757-336-6161 or the Visitor Center at 757-824-1344.

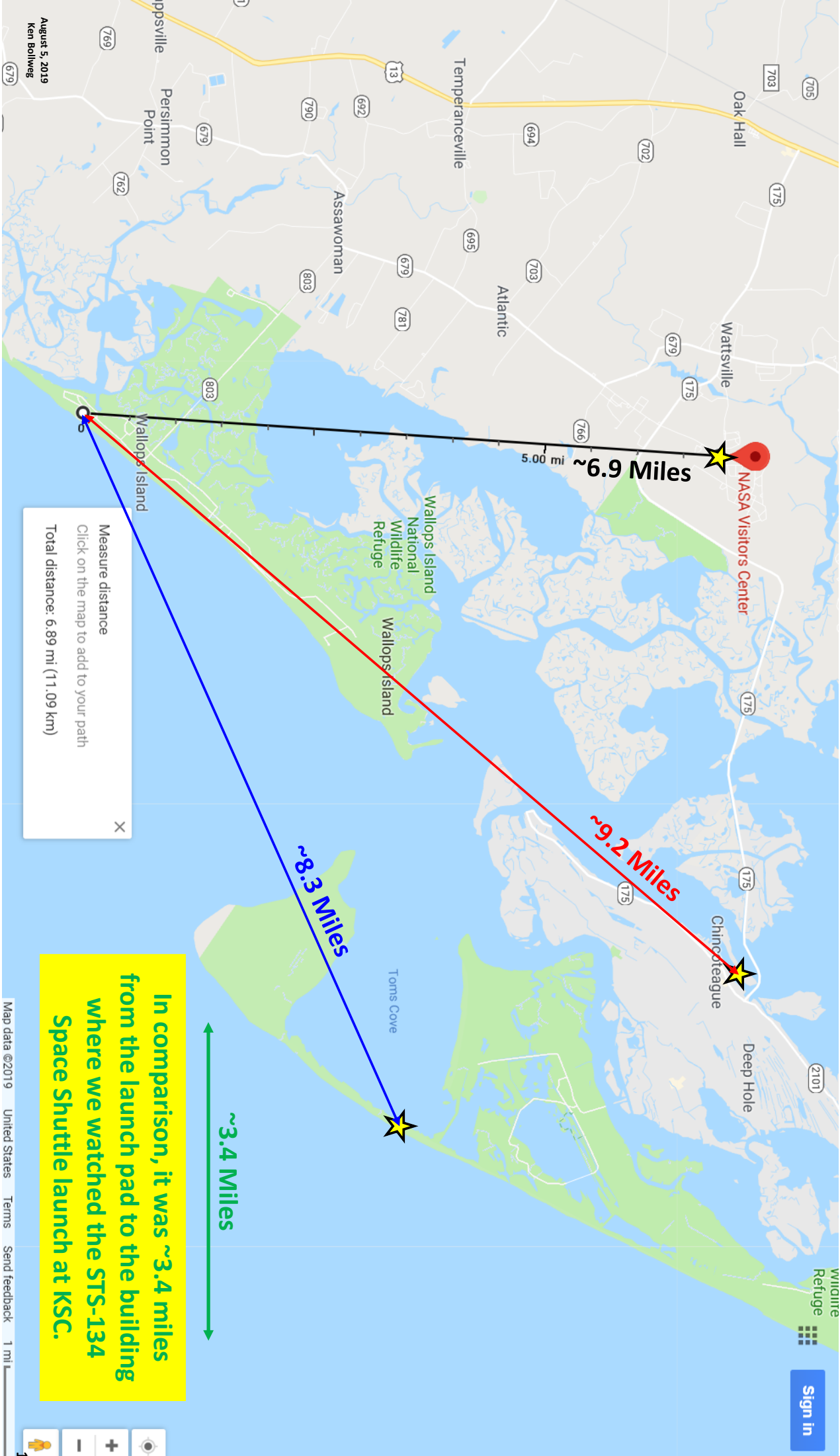
The National Park Service assists the U.S. Fish and Wildlife Service in the day-to-day management on the Toms Cove Hook portion of Chincoteague Refuge. Refuge regulations apply on the Hook.

0 1 2 Kilometers
0 1 2 Miles

North

[Sign In](#)

Map data ©2019 United States Terms Send feedback 1 mi 15

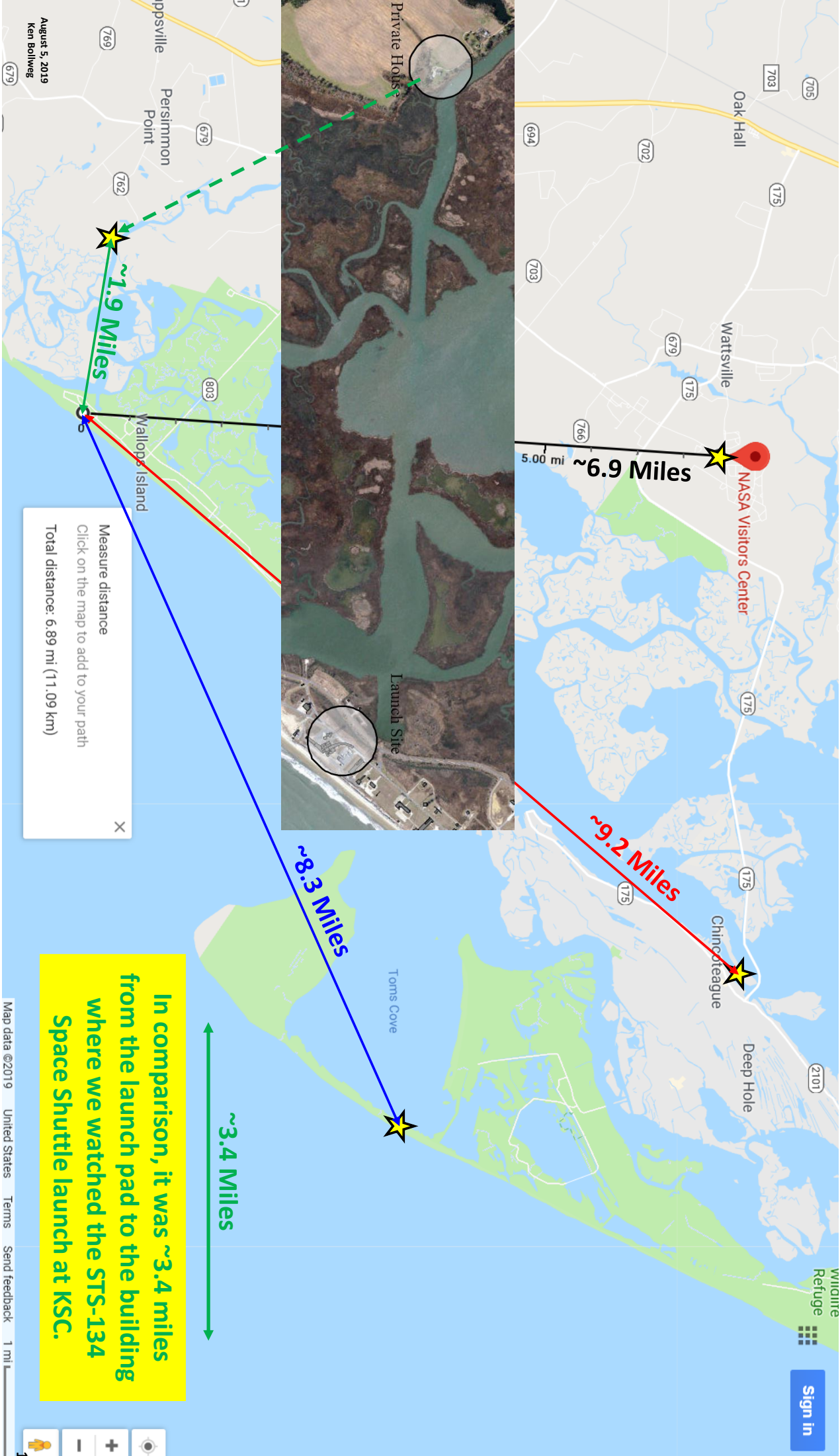


Measure distance
 Click on the map to add to your path
 Total distance: 6.89 mi (11.09 km)

In comparison, it was ~3.4 miles from the launch pad to the building where we watched the STS-134 Space Shuttle launch at KSC.

August 5, 2019
 Ken Bolwig

Map data ©2019 United States Terms Send feedback 1 mi



Measure distance
Click on the map to add to your path
Total distance: 6.89 mi (11.09 km)

In comparison, it was ~3.4 miles from the launch pad to the building where we watched the STS-134 Space Shuttle launch at KSC.