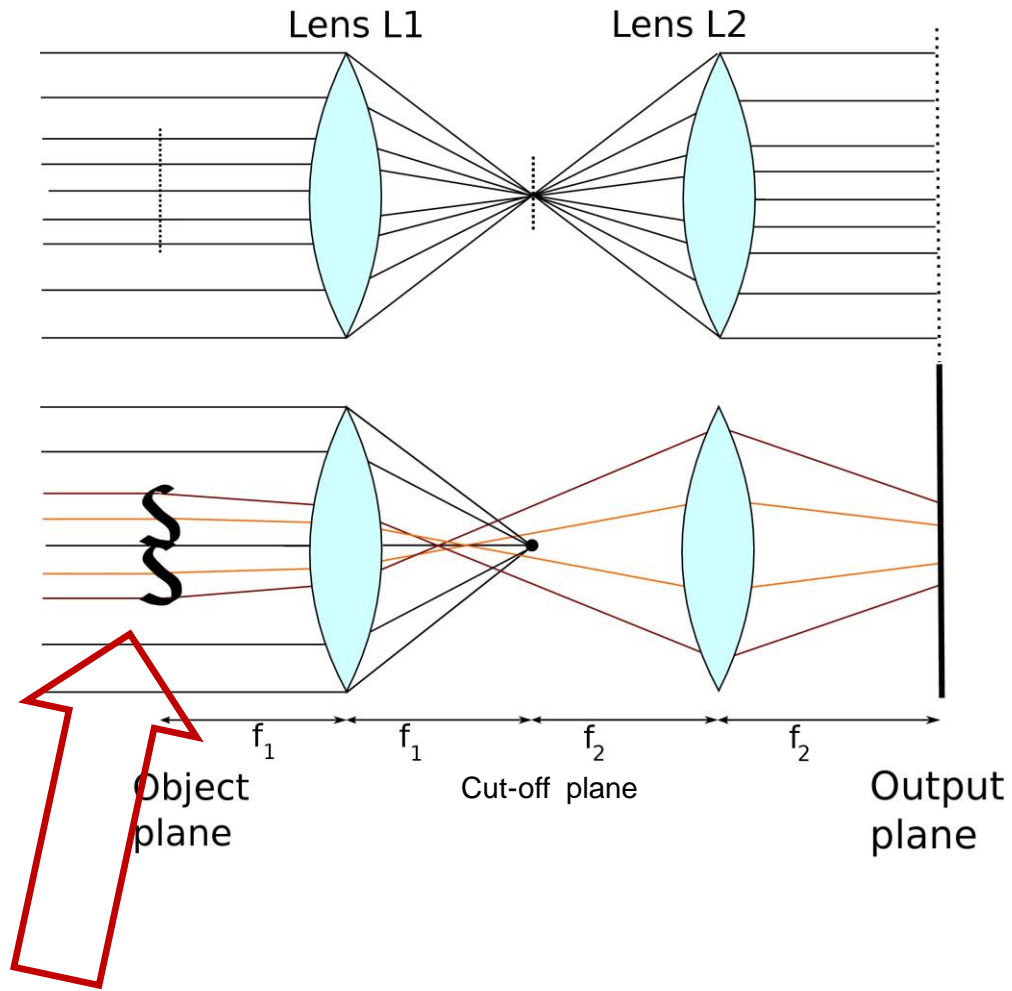


Schlieren Imaging

Principle



Basic Principle

- Blocking of non-deflected rays
- Imaging of deflected rays

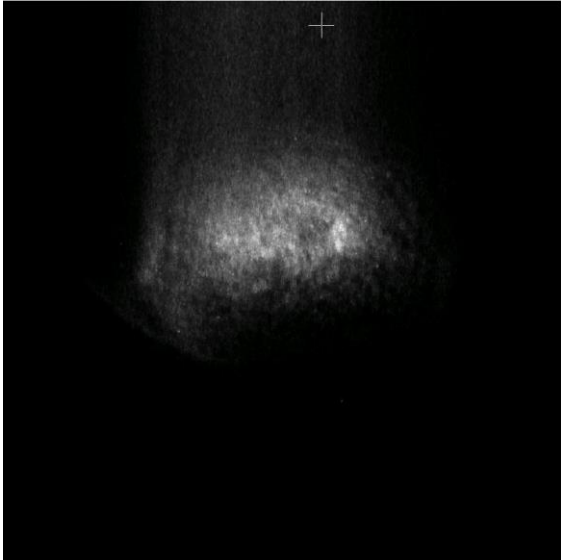
Plasma/Excited
Vapor - Column

$n_{pe} = 5e14cm^{-3}$
 $t = 0s$

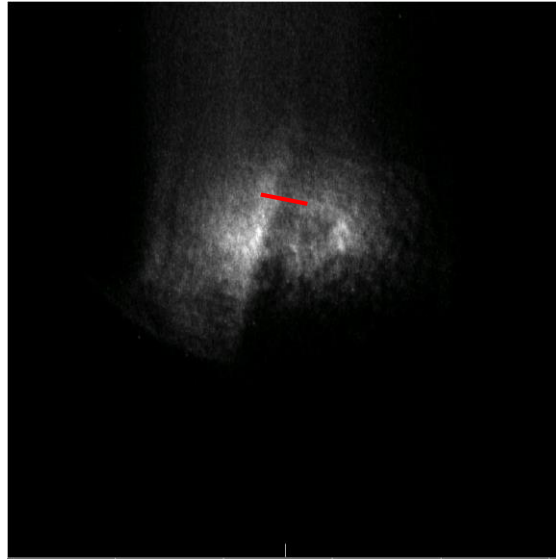
Schlieren Imaging

Ionizing Laser Energy Scan

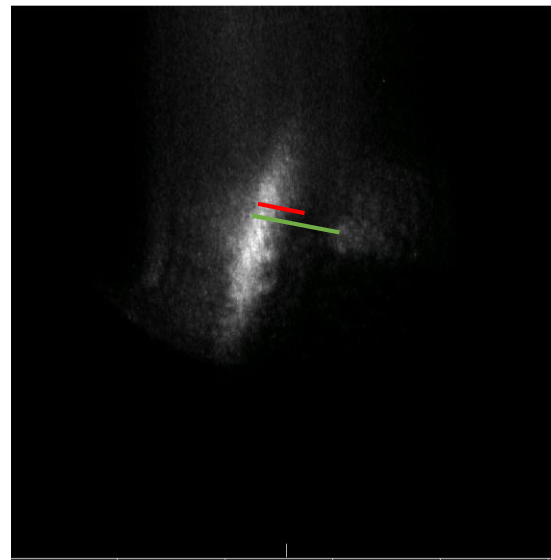
$E_L = 0mJ$



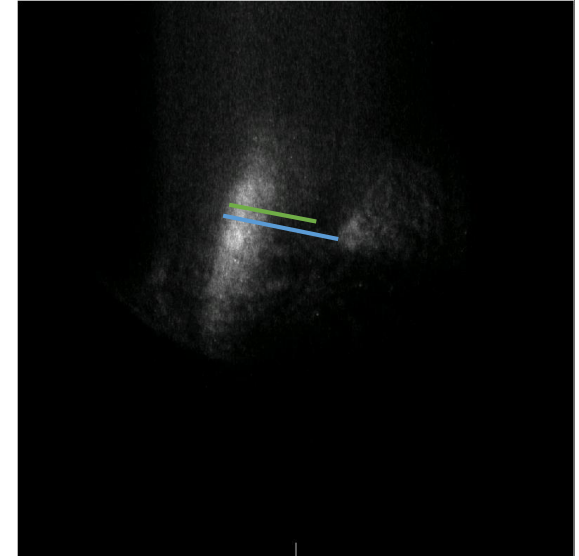
$E_L = 13mJ$



$E_L = 22mJ$



$E_L = 31mJ$

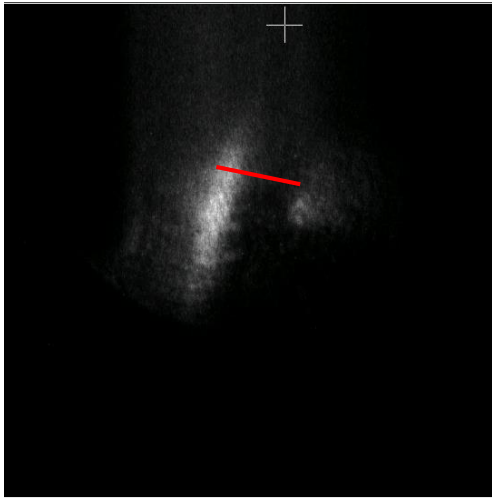


$n_{pe} = 5e14cm^{-3}$
 $E=20mJ$

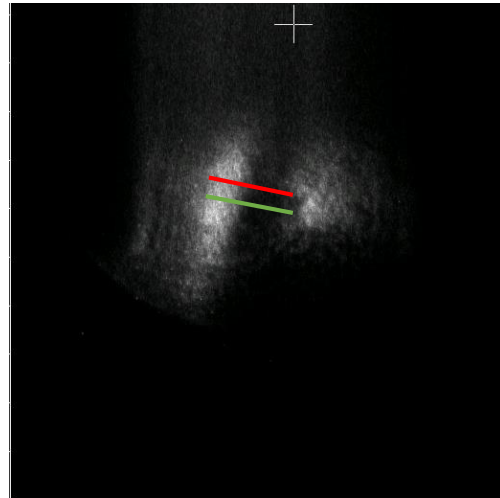
Schlieren Imaging

Time Evolution Plasma

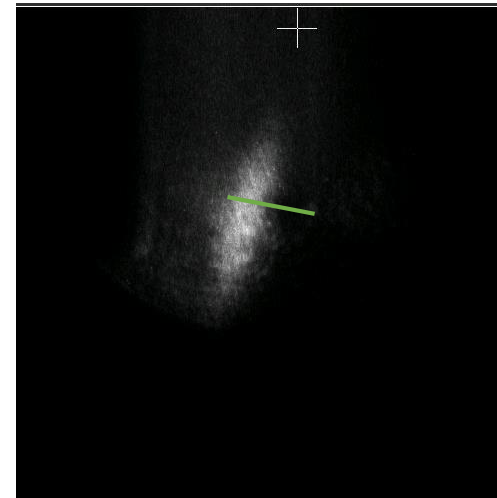
$t= 0s$



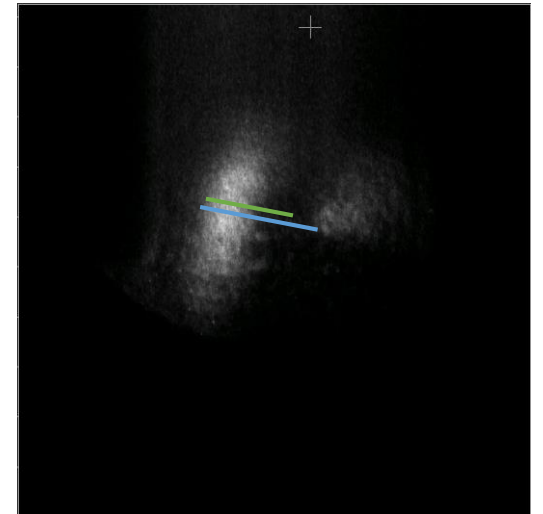
$t= 0.6\mu s$



$t= 1.7\mu s$



$t= 2.5\mu s$



$n_{pe} = 2e14cm^{-3}$
 $t = 0s$

Schlieren Imaging

