



Emittance Analysis Solenoid Mode



WARWICK
THE UNIVERSITY OF WARWICK

T. Lord

10/09/2019 / MICE Analysis Workshop / Warwick University

Changes

Started tuning full MC – higher momentum beams in progress

Implemented Chris's systematics MC prod.

- still needs to be included in analysis, for now errors are without systematics

Streamlined workflow for running analysis / changes

Running many settings with official MC, now updated with Chris's D1/D2 fields

Run Selection

Shown :

Cooling Channel tag : 2017-02-6

3,6,10-140 LH2-full, empty, LiH + None

- MC + Data

Ongoing :

Cooling Channel tag : 2017-02-6

3 – 170, 200, 240

LH2, LH2-empty, Empty, LiH

Cuts

US :

1 TOF0 & TOF1 SP

TOF01

1 Scifi track US

Scifi fiducial US

Chi2 US

TOF01 vs P – banana cut

P tot US

US aperture

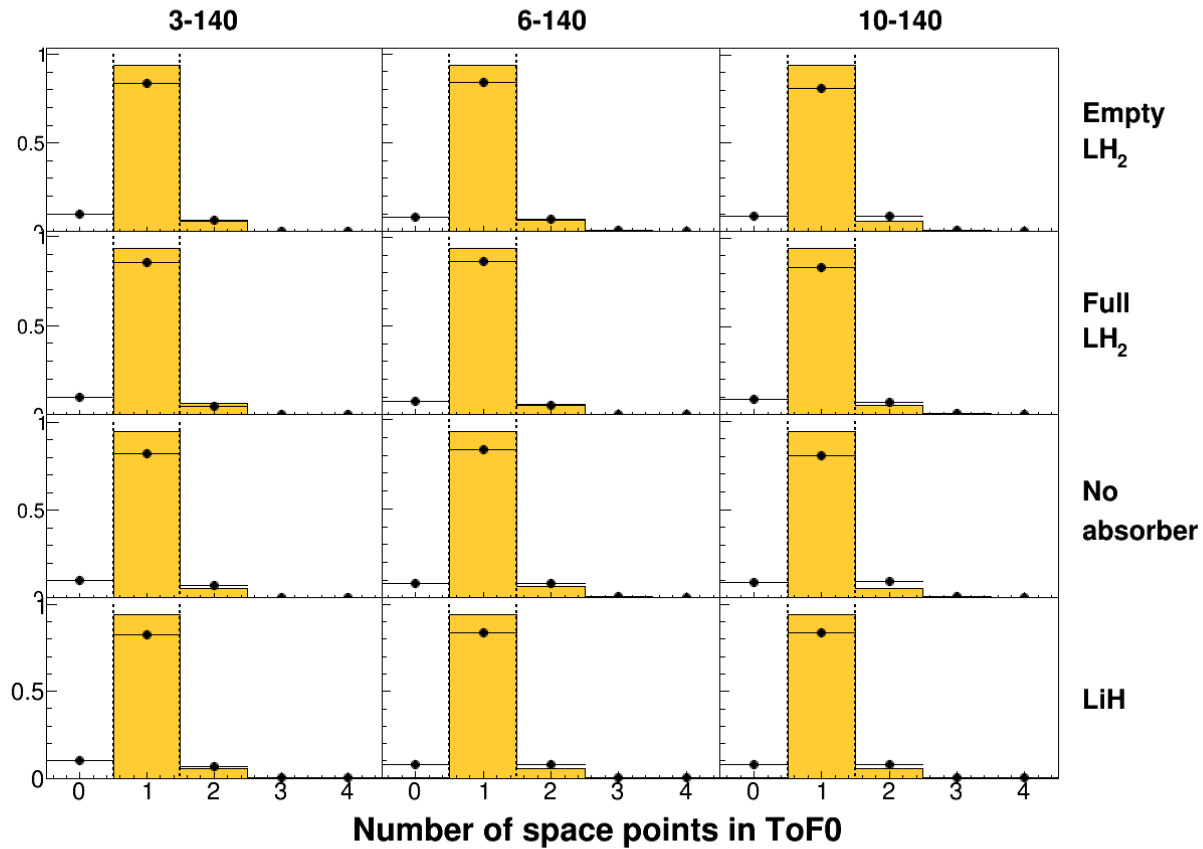
DS :

1 Scifi track DS

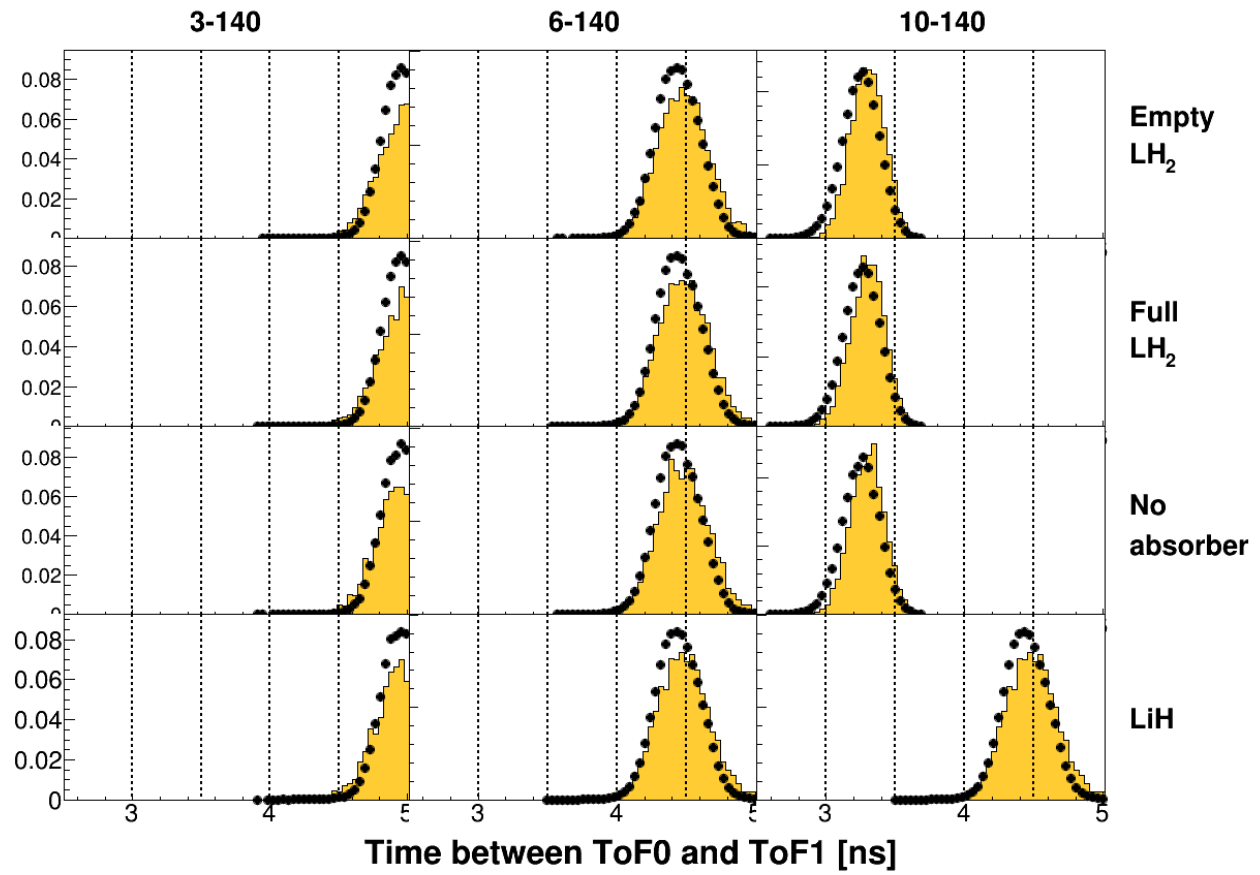
Chi2 DS

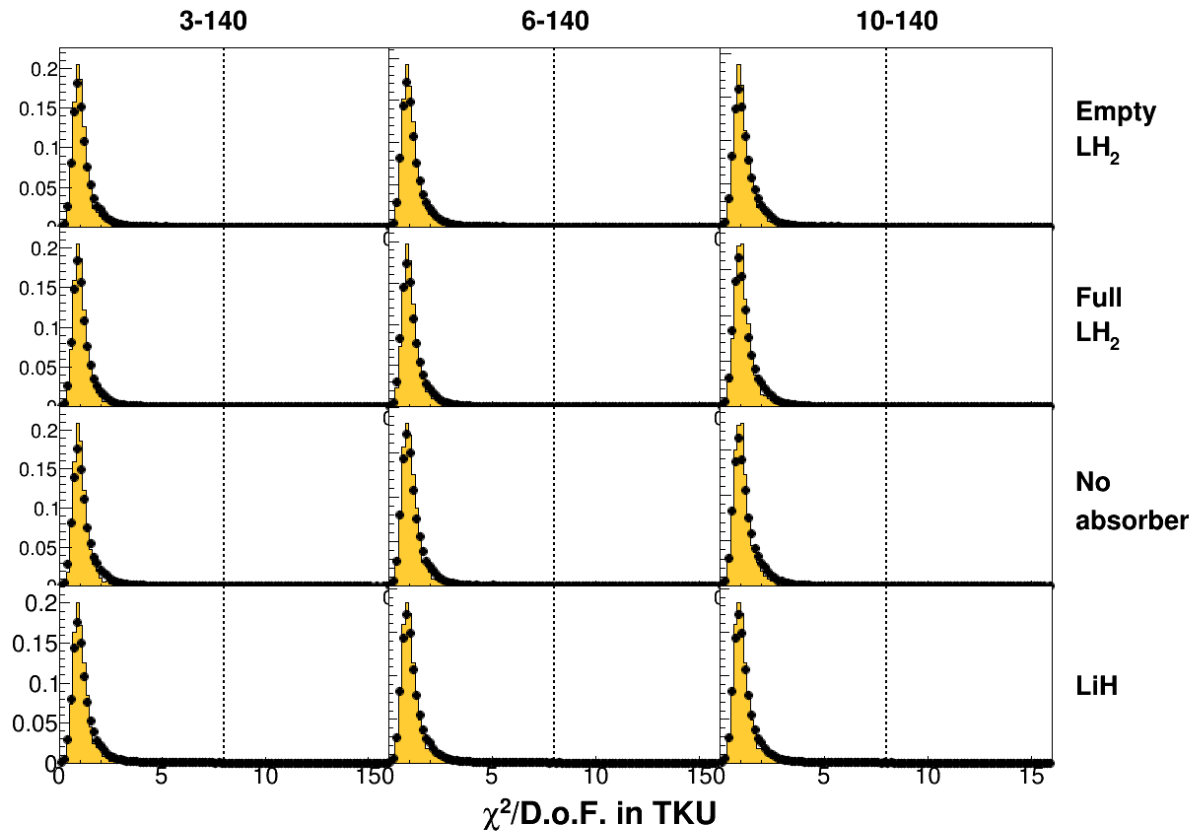
Scifi fiducial DS

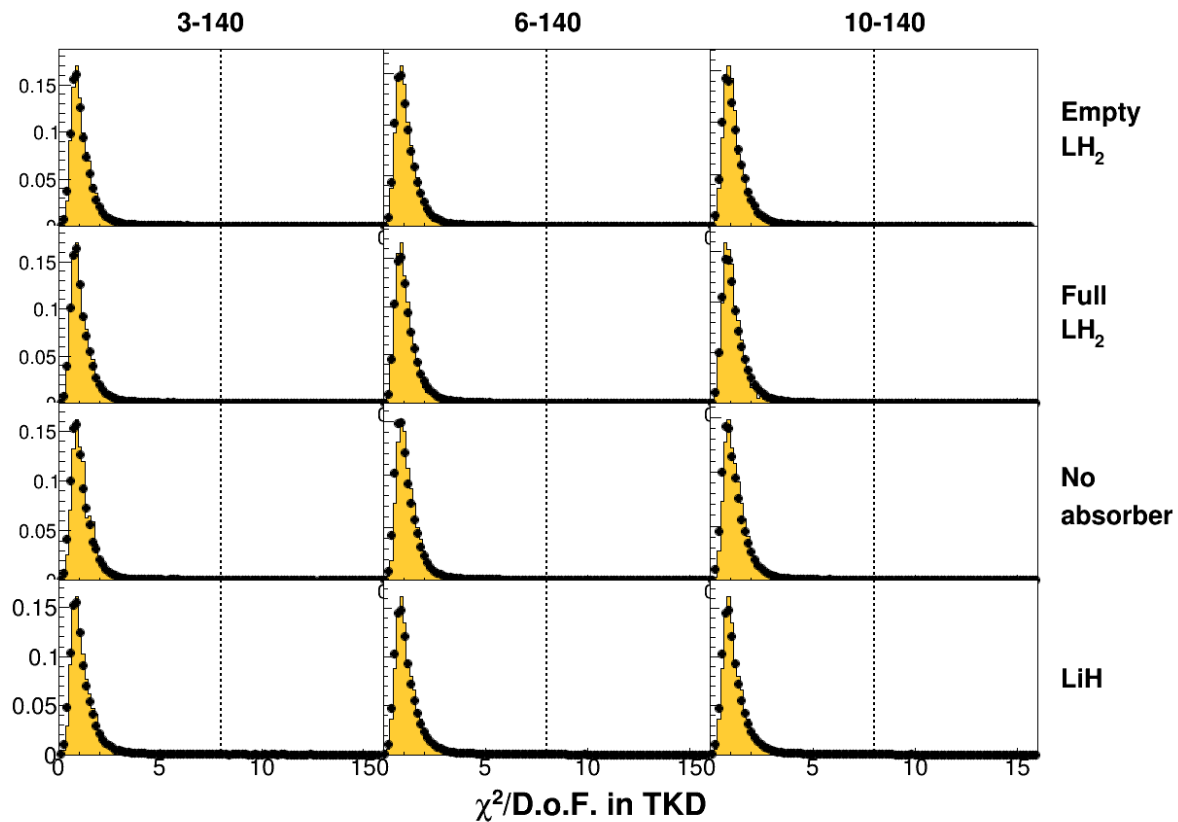
Sample Selection

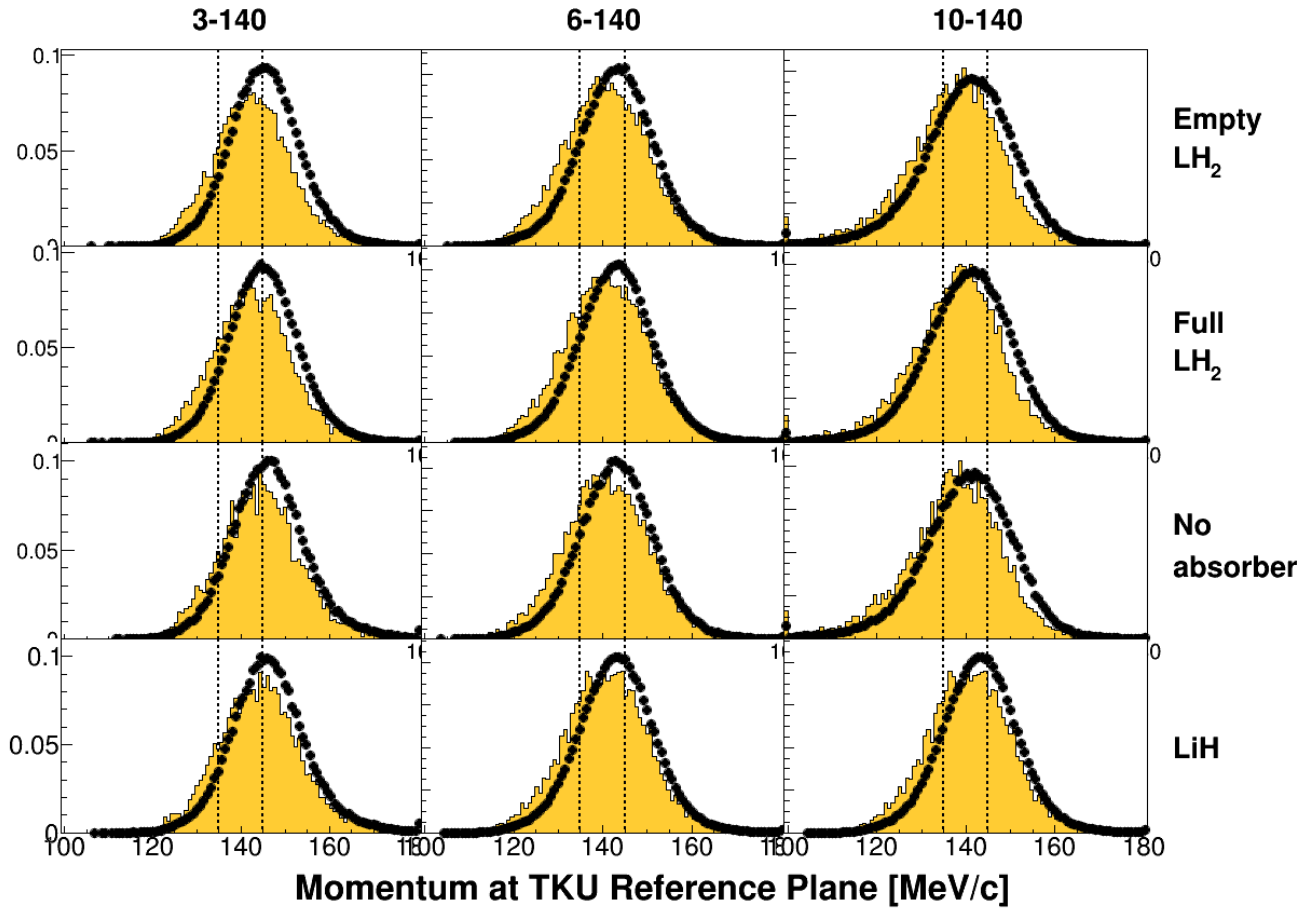


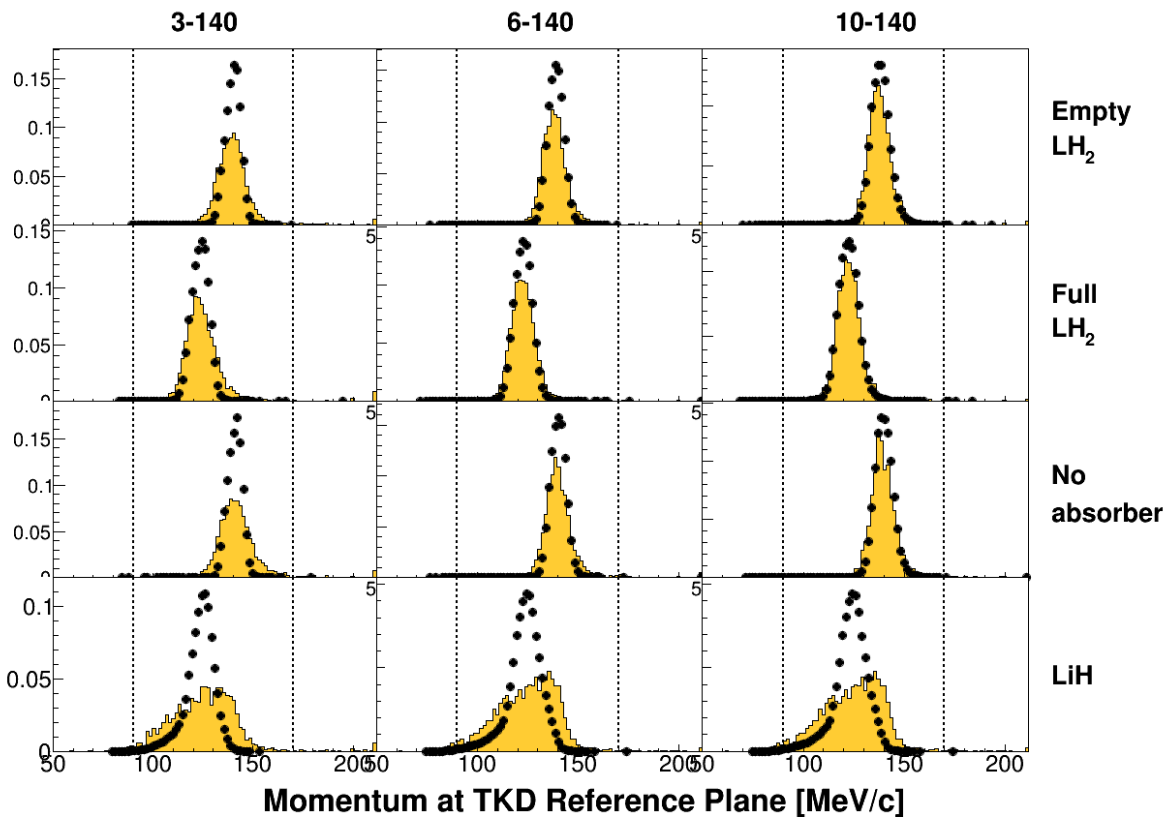
Sample Selection

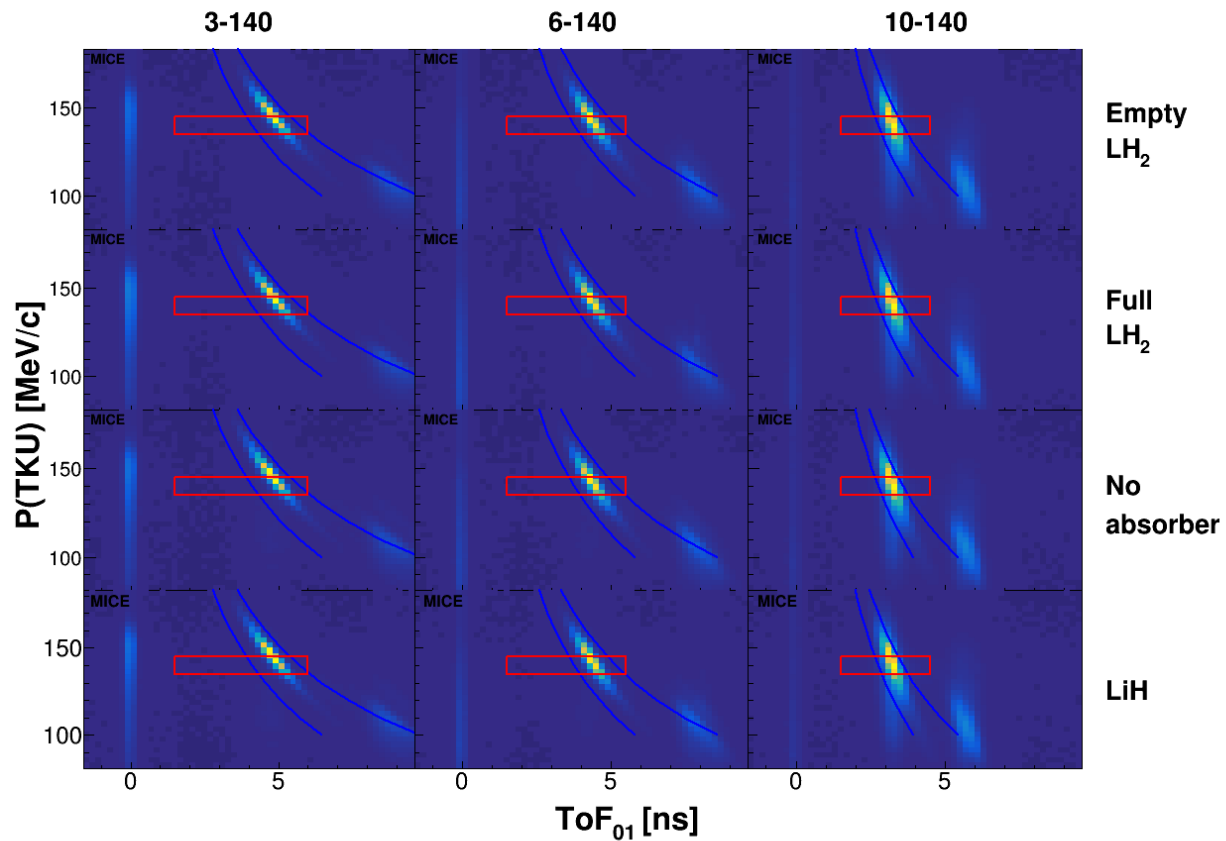




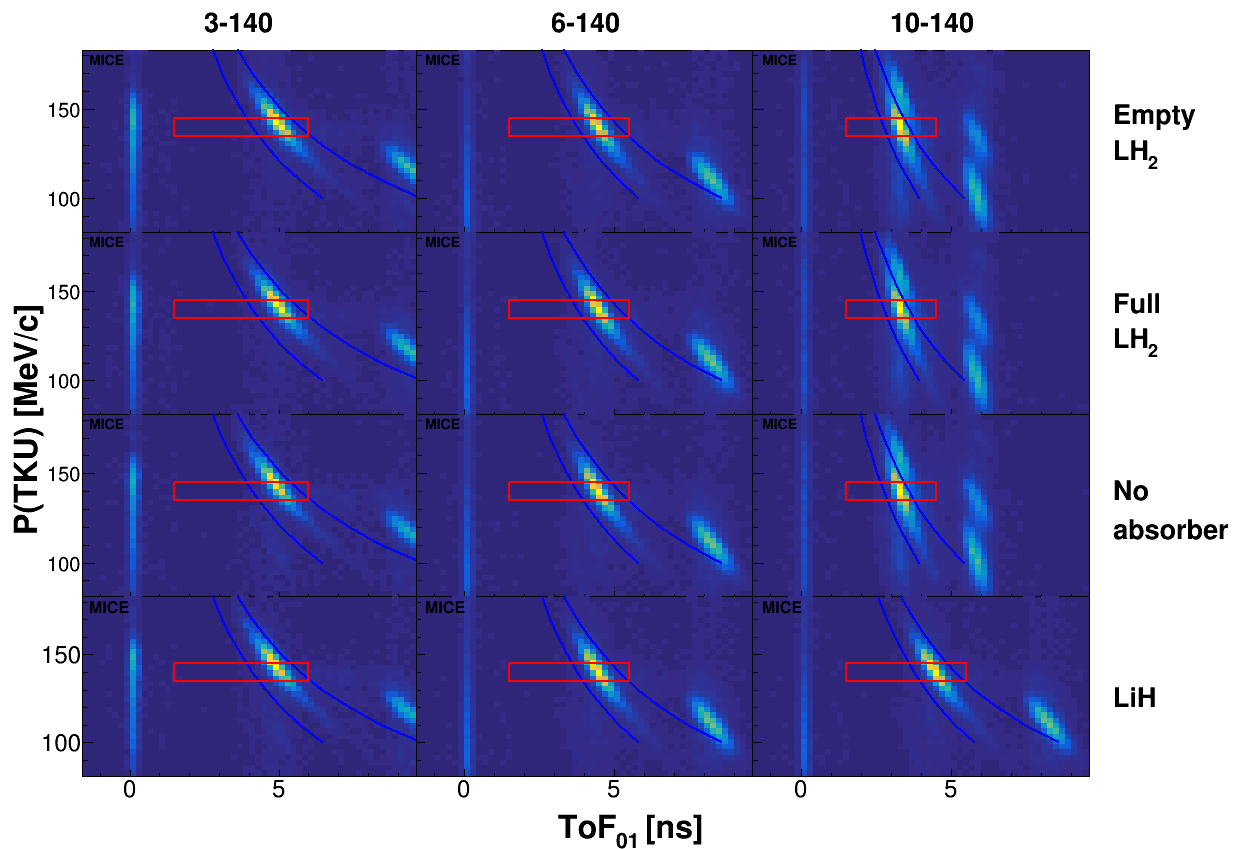




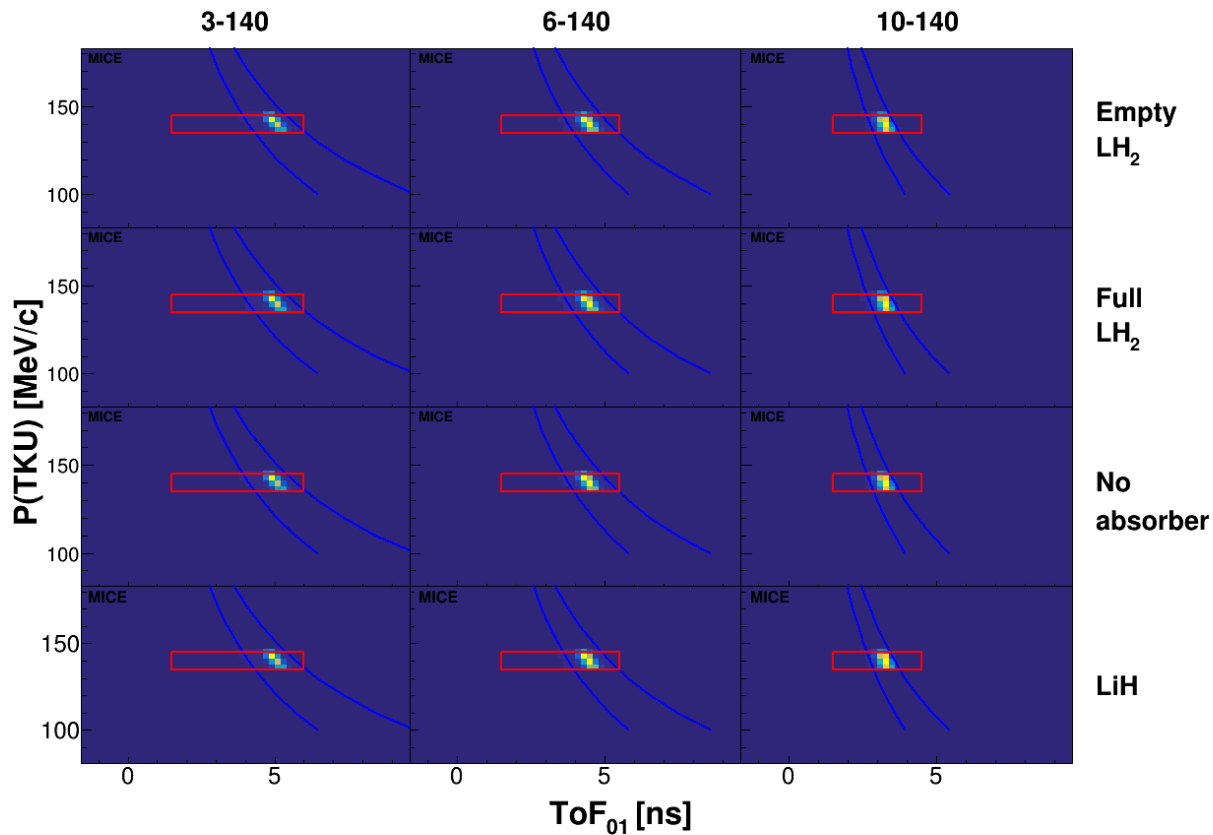




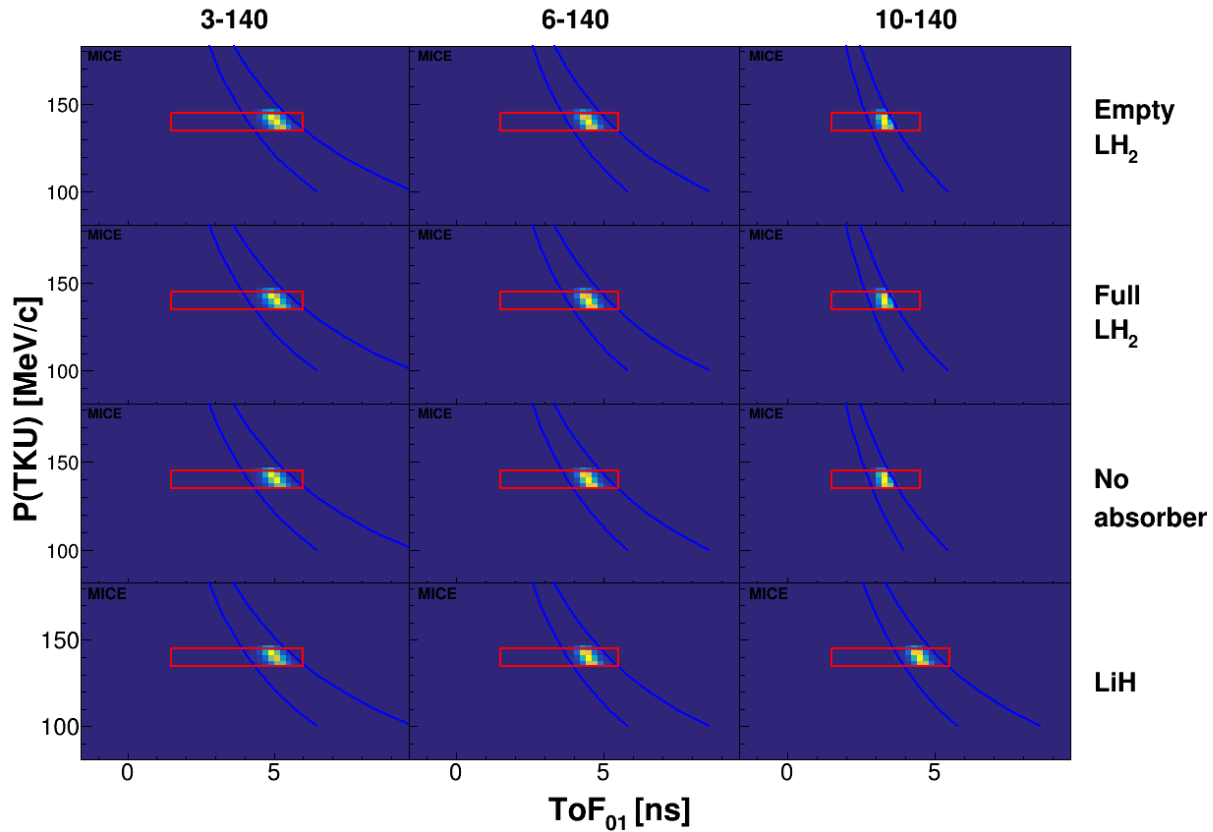
DATA
No cuts



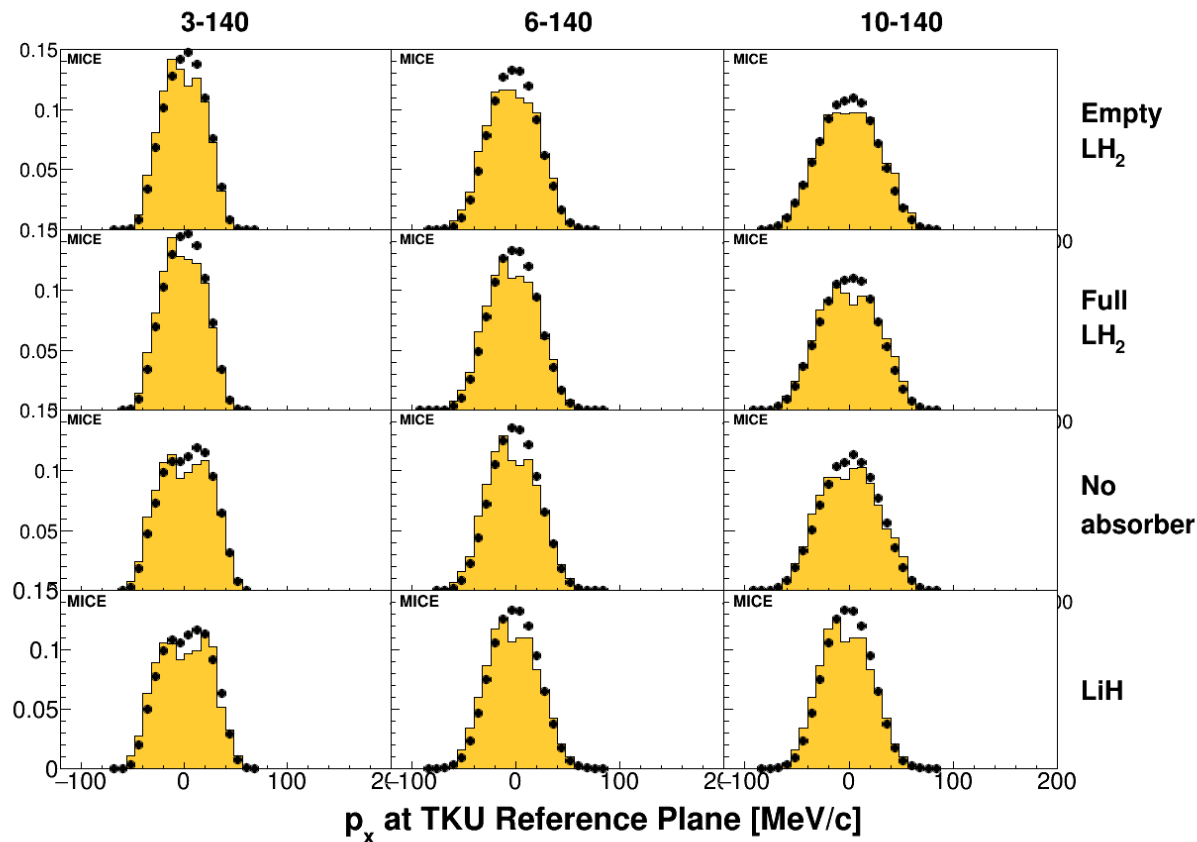
MC
No cuts

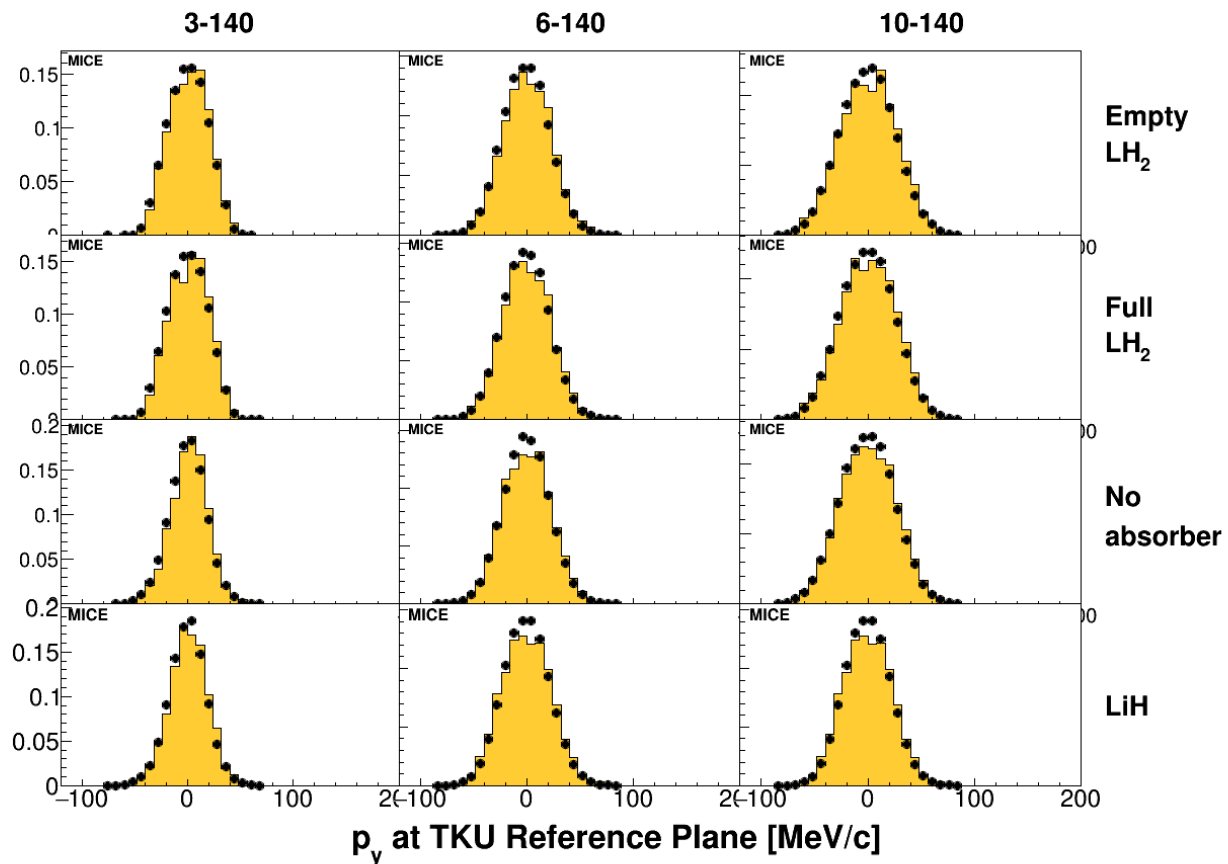


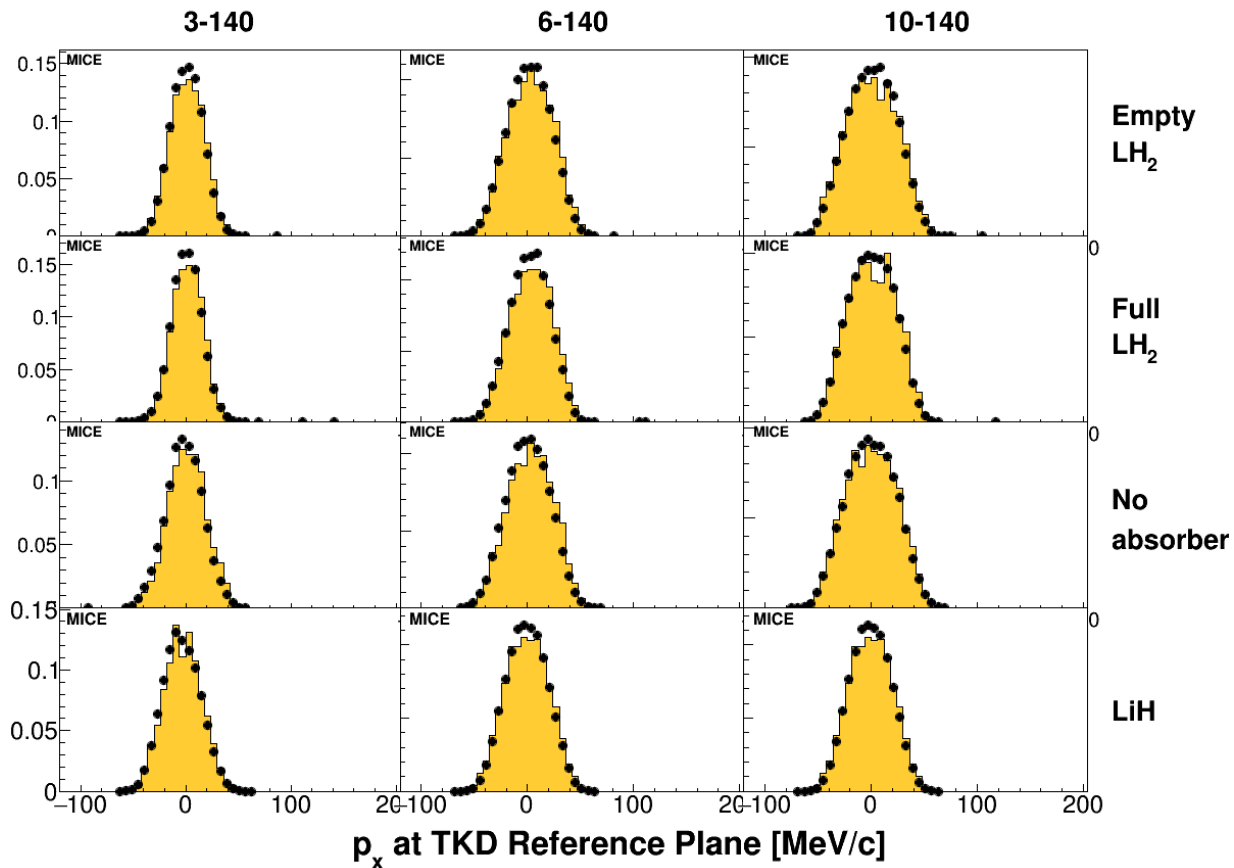
DATA
All cuts except p
vs Δ TOF01

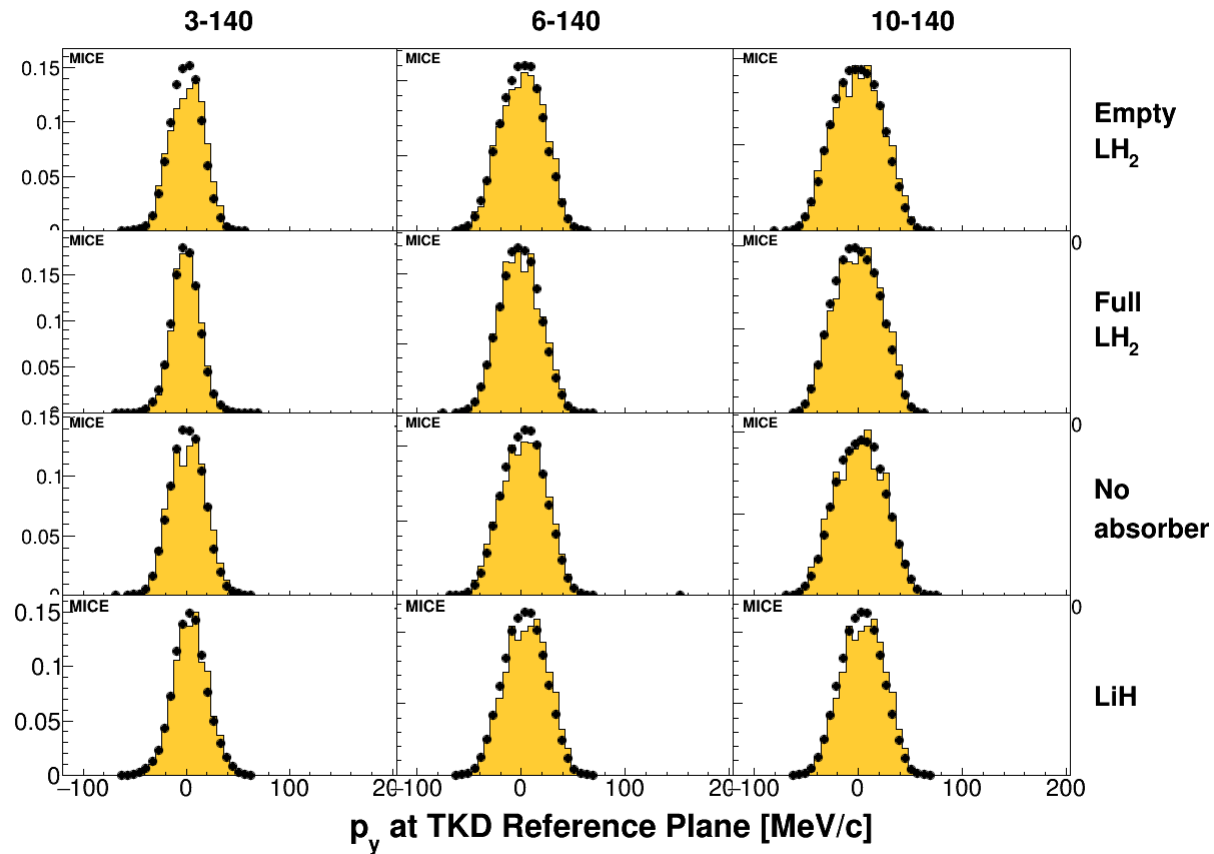


MC
All cuts except p
vs Δ TOF01









Backup Slides

Cuts

US :

1 TOF0 & TOF1 SP

TOF01

1 Scifi track US

Scifi fiducial US

Chi2 US

TOF01 vs P – banana cut

P tot US

US aperture

Events: 41233

DS :

1 Scifi track DS

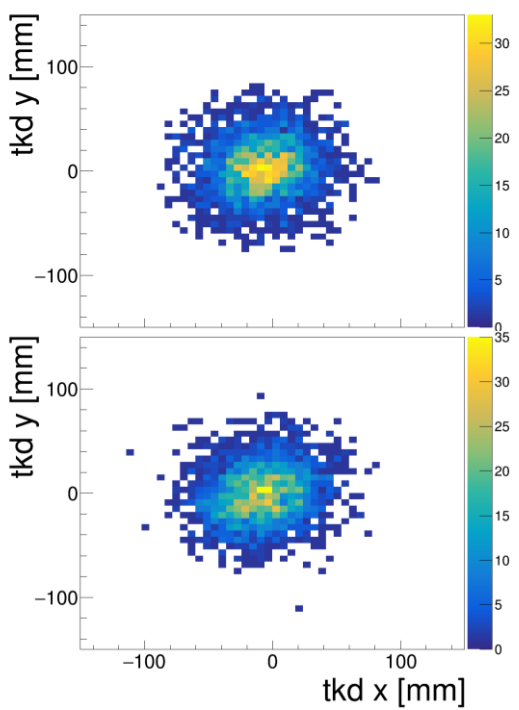
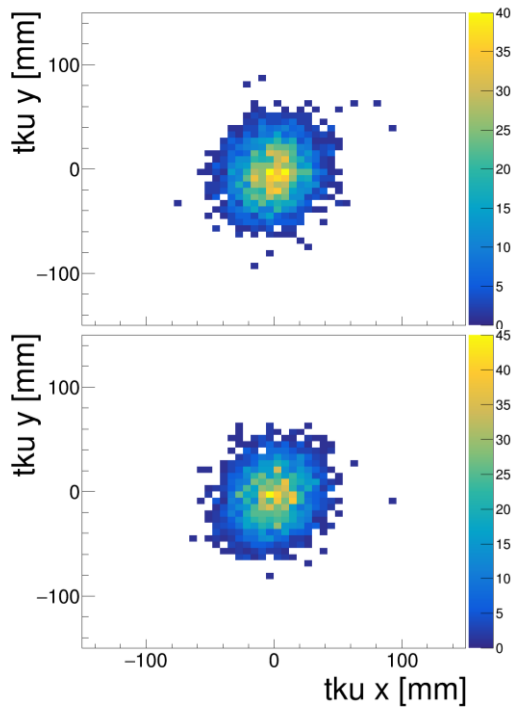
Chi2 DS

Scifi fiducial DS

Events: 35756

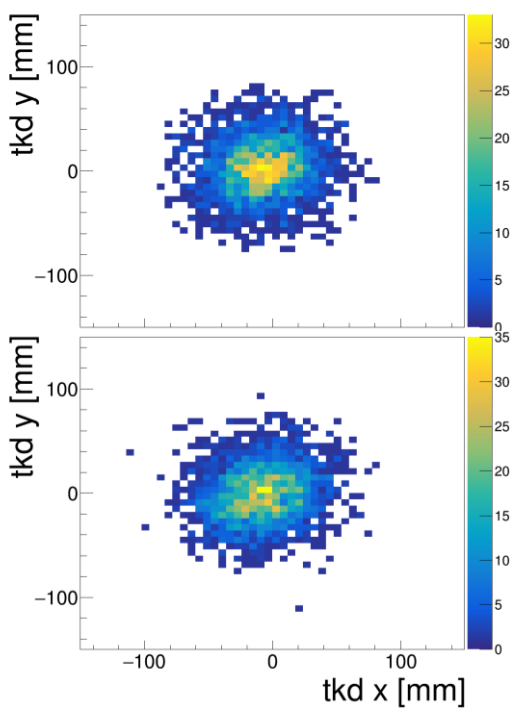
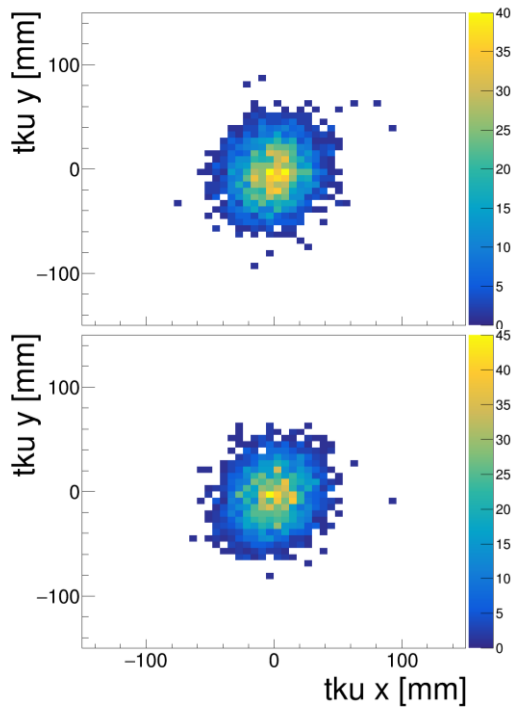
9883 2017-02-6 3-140 ABS-LH2

9883 2017-02-6 3-140 ABS-LH2

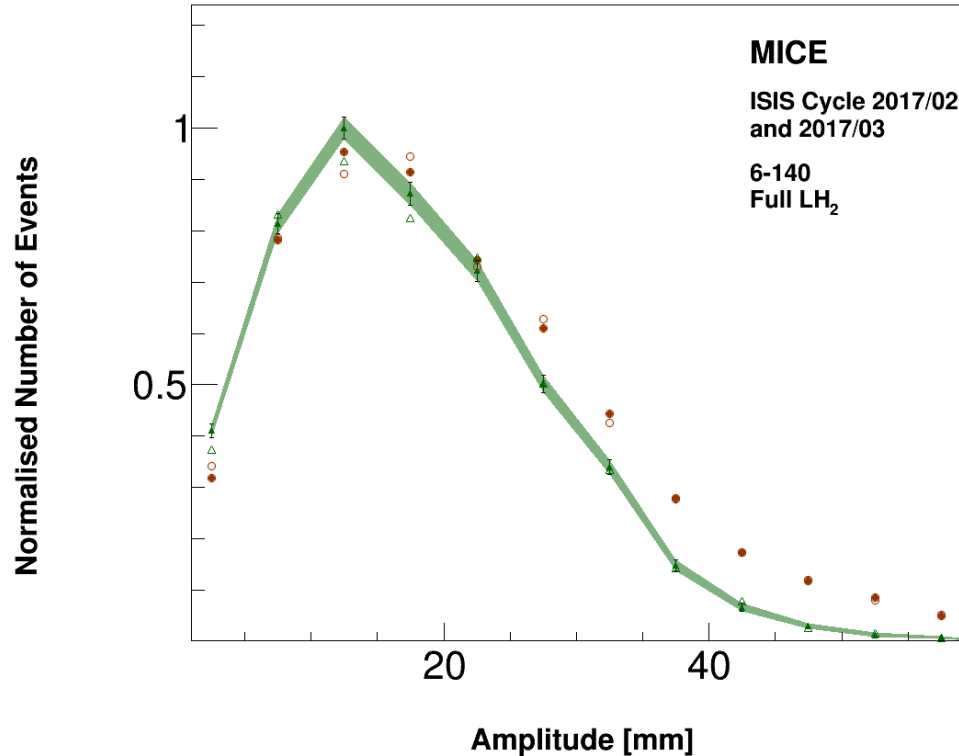


9883 2017-02-6 3-140 ABS-LH2

9883 2017-02-6 3-140 ABS-LH2



09885 – Amplitude Distributions - Data - PDF



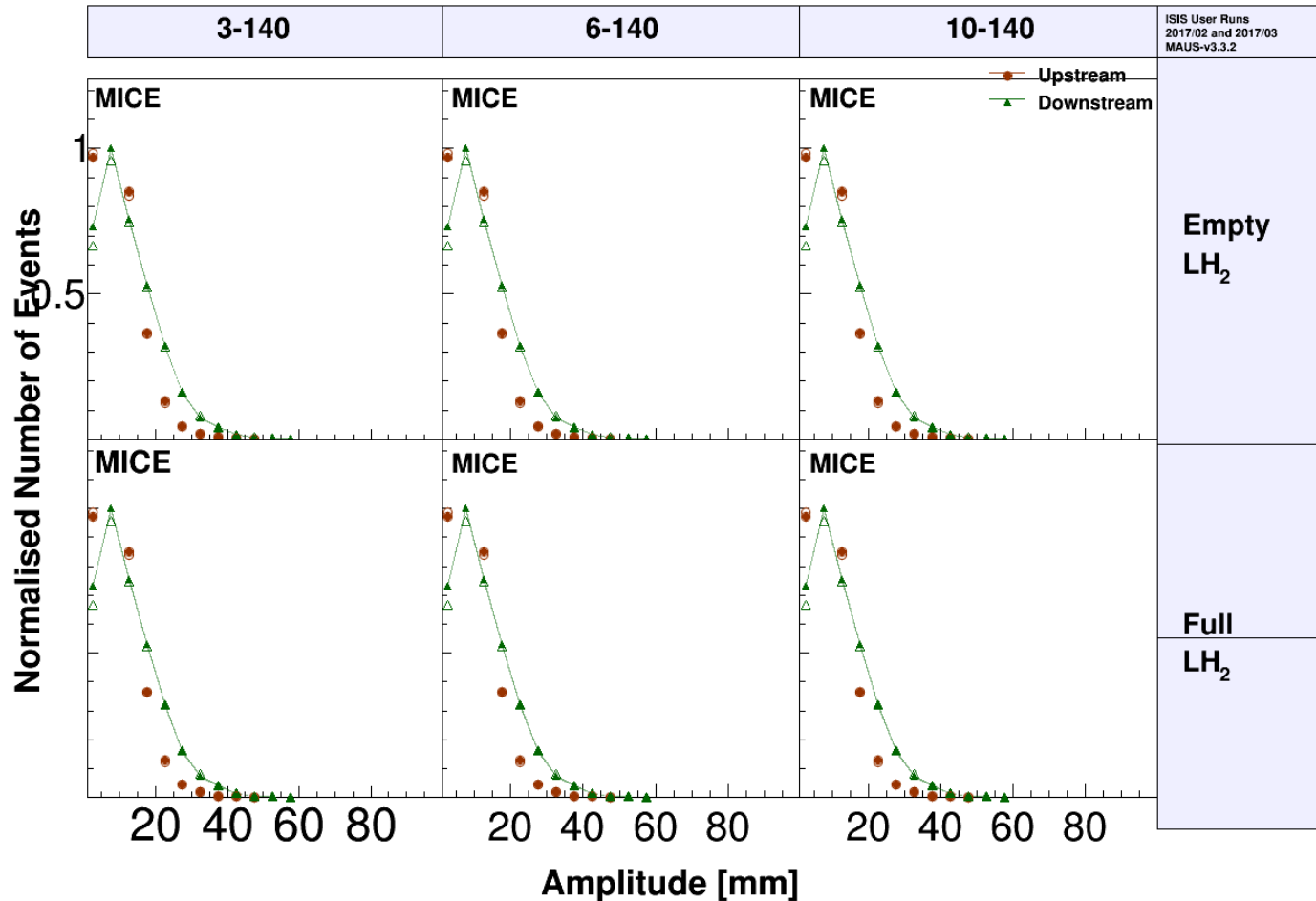
Red: US

Green: DS

Open points:
uncorrected

Filled points:
corrected

Amplitude Distributions - Data - PDF

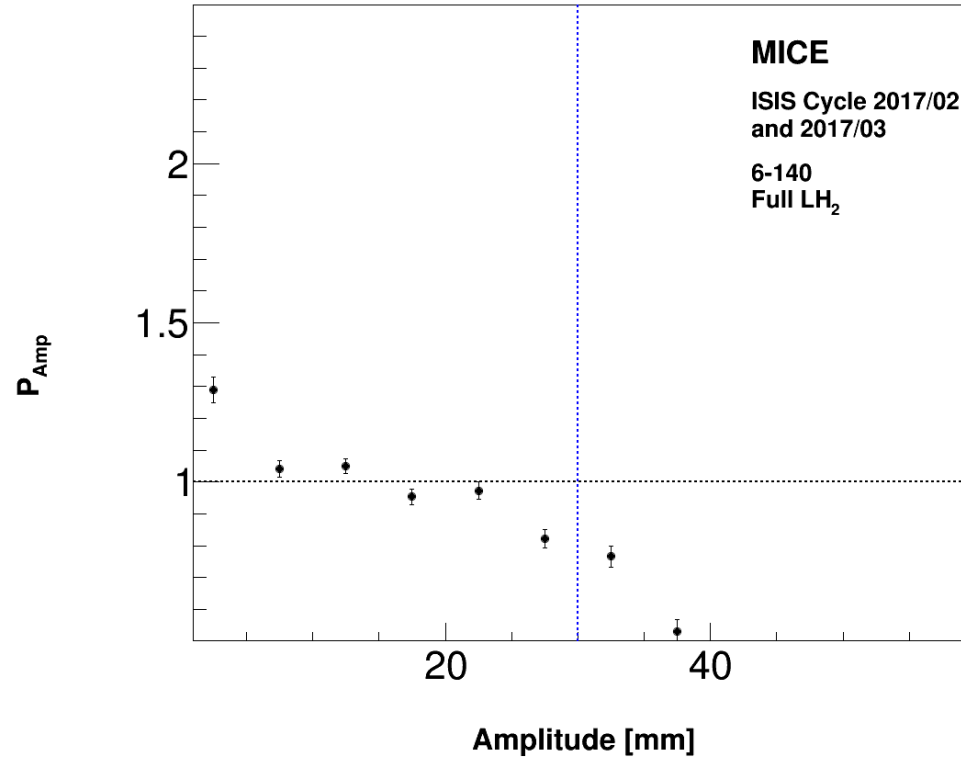


Red: US
Green: DS

Open points:
uncorrected

Filled points:
corrected

09885 – Amplitude Distributions - Data - PDF Ratio



09885 – Data vs MC - PDF Ratio

