

---

# **experiment dashboard**

**LCG site reliability**

**ATLAS specific job monitoring**

**ATLAS data management**

**ALICE data transfers**

Benjamin Gaidioz, Julia Andreeva  
on behalf of the dashboard team

# introduction

---

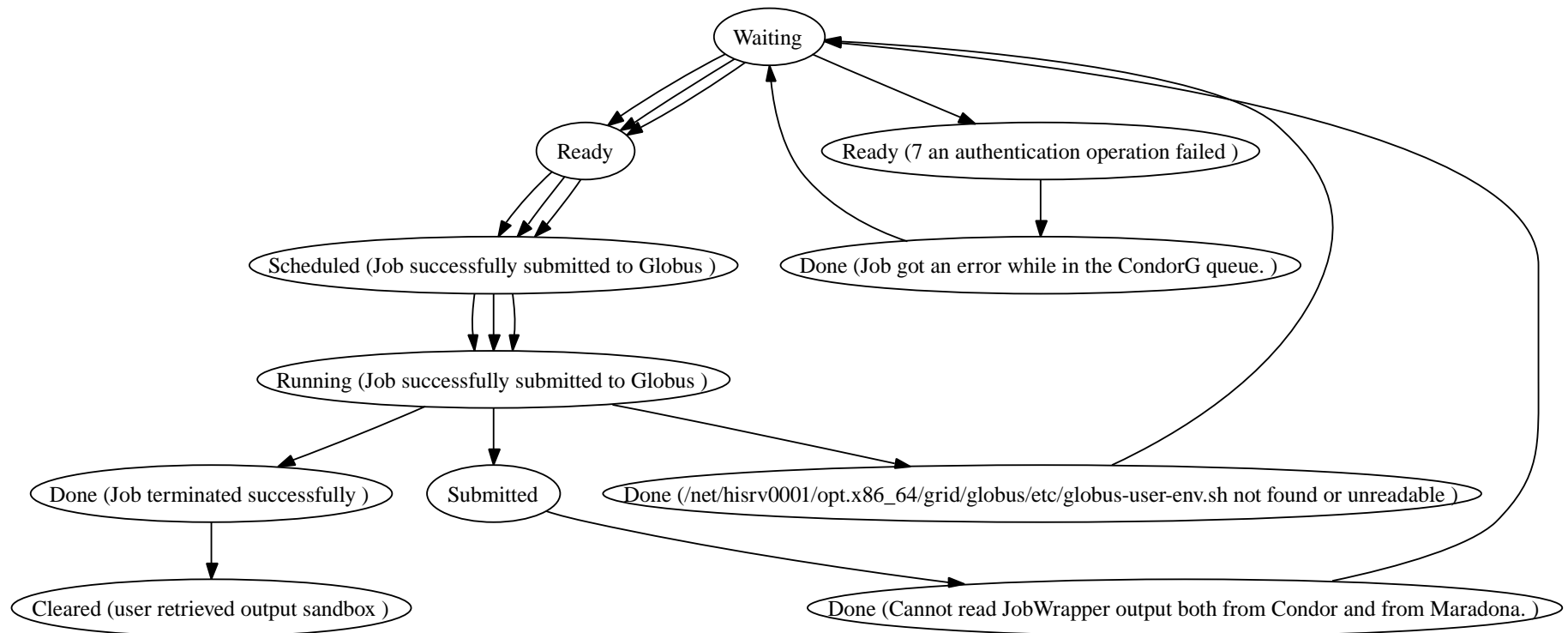
- LCG site reliability (Pablo Saiz)
  - complex processing of LCG/RGMA information (job execution steps) for guessing errors.
- ATLAS job monitoring (Benjamin Gaidioz, Dietrich Liko *et al.*)
- ATLAS data management (Ricardo Rocha)
  - monitoring of ATLAS distributed data management. Design/implementation close to DDM users and developers,
- ALICE data transfers (Pablo Saiz).

---

# LCG site reliability

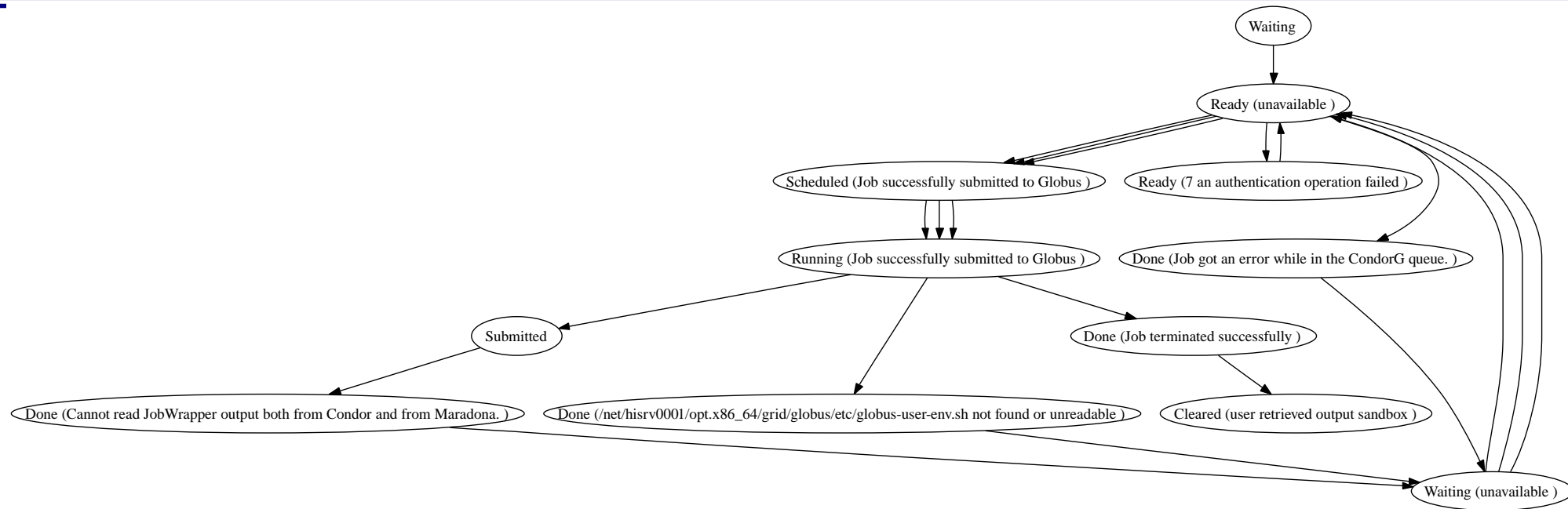
# an example

- successive steps of a job (info from RGMA).



- resubmission, system error messages,
- hidden error messages (authentication error),

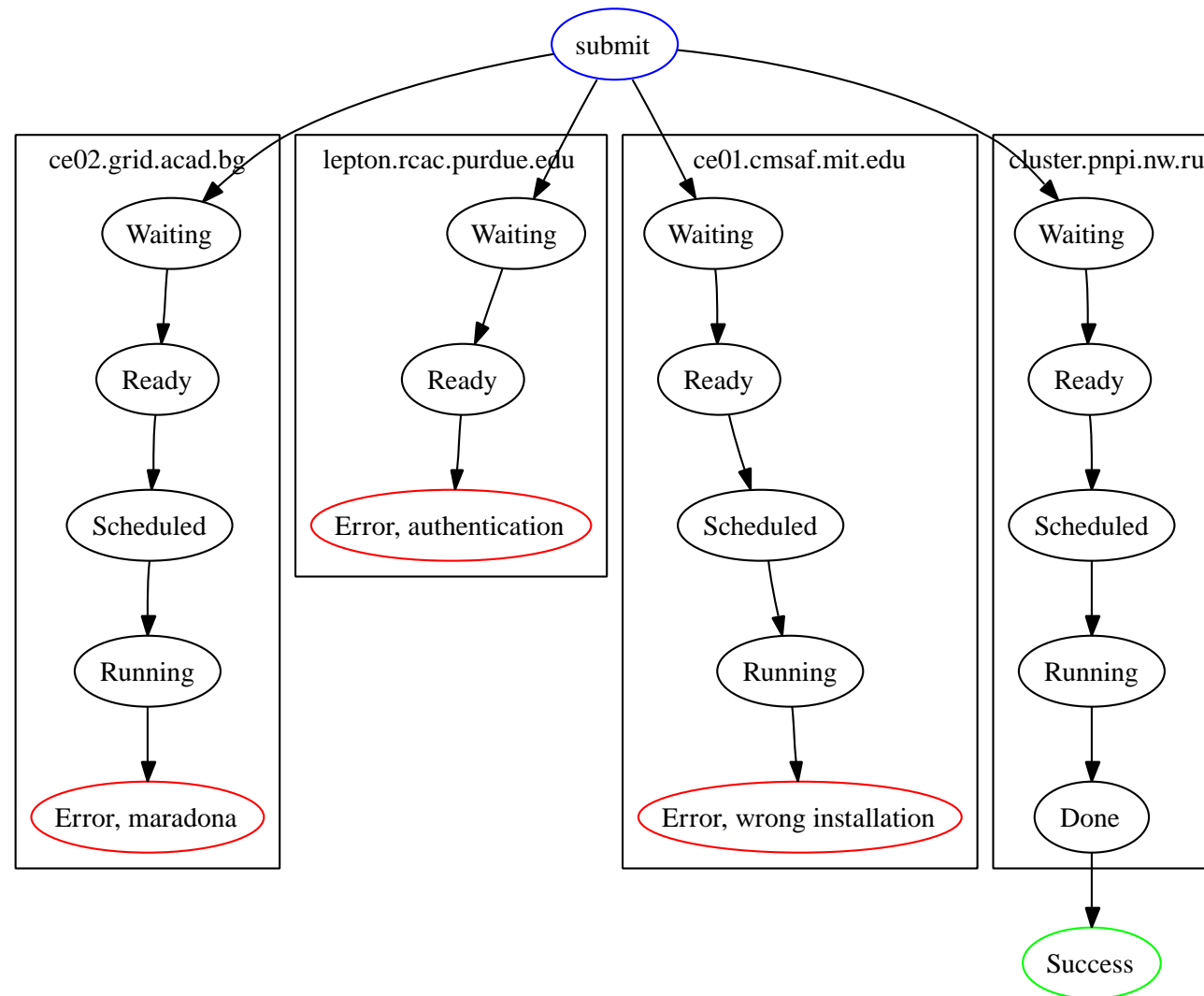
# another example



■ missing steps.

# split by CE

- split by CE, simplified.



# summaries

---

- execution is split in *attempts* (successful or not),
- we measure *reliability* as success/total (attempts, not job),
- grouped by site/ce,
- on each CE, jobs are grouped by *path* (jobs following *exactly* the same steps).
- objective: spot system errors in sites.

# web interface (daily view)

---

SiteName (click on any site)	Successful jobs	Failed jobs	Efficiency
CERN-PROD	197	626	23.94%
Taiwan-LCG2	231	184	55.66%
BUDAPEST	342	19	94.74%
INFN-LNL-2	656	19	97.19%



# web interface (daily view, CE)

SiteName (click on any site)	Successful jobs	Failed jobs	Efficiency
CERN-PROD	197	626	23.94%
ce106.cern.ch:2119/jobmanager-lcglsf-grid_cms	30	109	21.58%
ce106.cern.ch:2119/jobmanager-lcglsf-grid_2nh_cms	12	21	36.36%
ce105.cern.ch:2119/jobmanager-lcglsf-grid_2nh_cms	16	20	44.44%
ce105.cern.ch:2119/jobmanager-lcglsf-grid_cms	10	118	7.81%
ce101.cern.ch:2119/jobmanager-lcglsf-grid_cms	81	167	32.66%
ce102.cern.ch:2119/jobmanager-lcglsf-grid_2nh_cms	12	15	44.44%
ce101.cern.ch:2119/jobmanager-lcglsf-grid_2nh_cms	13	13	50.00%
ce102.cern.ch:2119/jobmanager-lcglsf-grid_cms	23	163	12.37%
Taiwan-LCG2	231	184	55.66%
BUDAPEST	342	19	94.74%
IN2P3-LCG2	658	10	98.48%

# web interface (daily view, CE, execution steps)

SiteName (click on any site)		Successful jobs		Fa
CERN-PROD		197		626
ce106.cern.ch:2119/jobmanager-lcglsf-grid_cms		30	109	21.58%
ce106.cern.ch:2119/jobmanager-lcglsf-grid_2nh_cms		12	21	36.36%
ce105.cern.ch:2119/jobmanager-lcglsf-grid_2nh_cms		16	20	44.44%
ce105.cern.ch:2119/jobmanager-lcglsf-grid_cms		10	118	7.81%
Jobids	# jobs	Successful?	Error message	
<a href="#">See all the jobids...</a>	1	Ignored	Job successfully submitted to Globus	
<a href="#">See all the jobids...</a>	56	No	Got a job held event reason: Globus error 131: the user proxy expired job is still running	
<a href="#">See all the jobids...</a>	18	No	cannot retrieve previous matches for _jobid_	
<a href="#">See all the jobids...</a>	15	No	Got a job held event reason: Proxy file missing or corrupted	
<a href="#">See all the jobids...</a>	13	No	Got a job held event reason: Globus error 158: the job manager could not lock the state lock file	
<a href="#">See all the jobids...</a>	4	No	Got a job held event reason: Globus error 158: the job manager could not lock the state lock file	
<a href="#">See all the jobids...</a>	2	No	Cannot download _file_ from _file_	
<a href="#">See all the jobids...</a>	2	No	Job got an error while in the CondorG queue.	

# web interface (daily view, CE, execution steps, details)

SiteName (click on any site)		Successful jobs		Failed jobs
CERN-PROD		197	109	626
ce106.cern.ch:2119/jobmanager-lcglsf-grid_cms		30	109	21.58%
ce106.cern.ch:2119/jobmanager-lcglsf-grid_2nh_cms		12	21	36.36%
ce105.cern.ch:2119/jobmanager-lcglsf-grid_2nh_cms		16	20	44.44%
ce105.cern.ch:2119/jobmanager-lcglsf-grid_cms		10	118	7.81%
Jobids	# jobs	Successful?	Error message	
<a href="#">See all the jobids...</a>	1	Ignored	Job successfully submitted to Globus	
<a href="#">See all the jobids...</a>	56	No	Got a job held event reason: Globus error 131: the user proxy expired job is still running.	
<a href="#">See all the jobids...</a>	18	No	cannot retrieve a job held event reason: Globus error 131: the user proxy expired job is still	
<a href="#">See all the jobids...</a>	15	No	Got a job held event reason: Globus error 131: the user proxy expired job is still	
<a href="#">See all the jobids...</a>	13	No	Got a job held event reason: Globus error 131: the user proxy expired job is still	
<a href="#">See all the jobids...</a>	4	No	Got a job held event reason: Globus error 158: the job manager could not lock the state lock file	
<a href="#">See all the jobids...</a>	2	No	Cannot download _file_ from _file_	
<a href="#">See all the jobids...</a>	2	No	Job got an error while in the CondorG queue.	

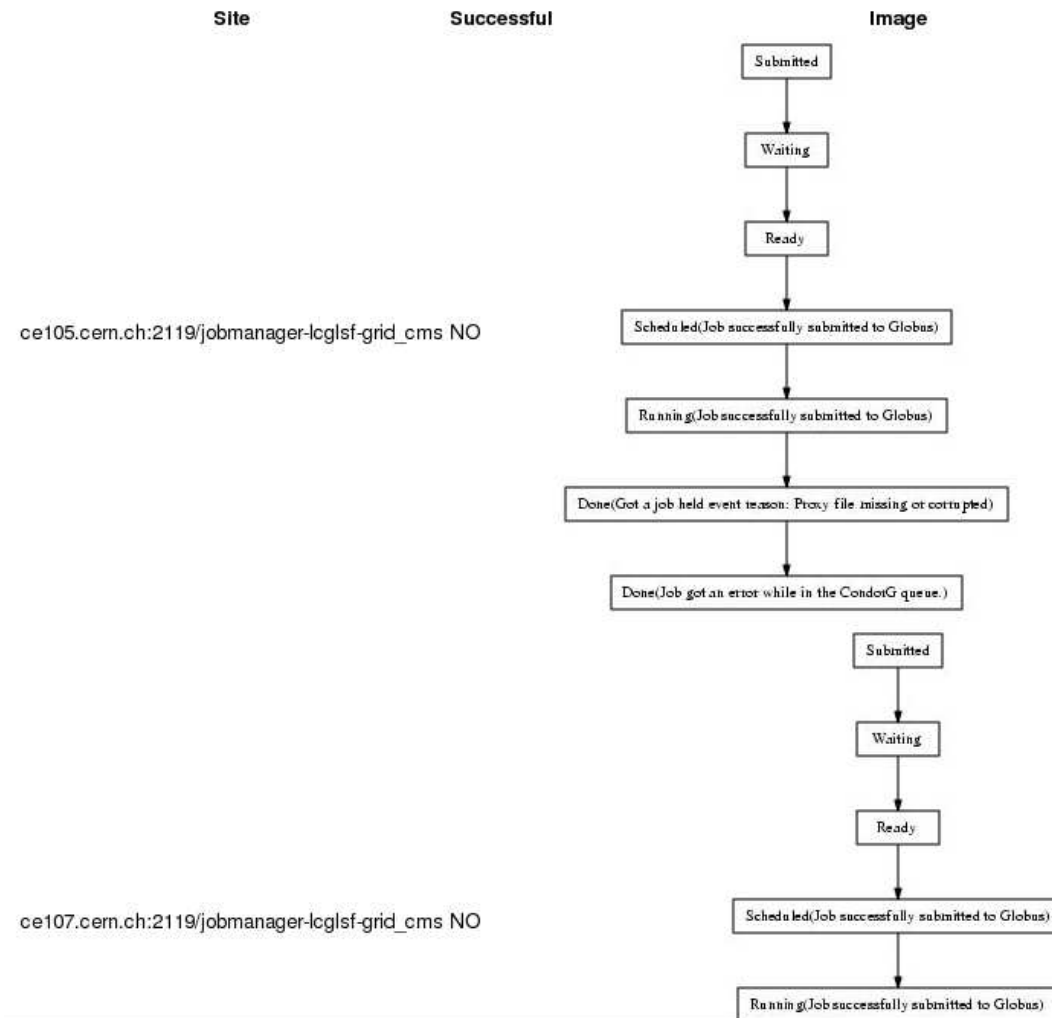


# web interface (job list)

JobId	# resubmission	Job successful?	Worker Node*
<a href="https://gdrb06.cern.ch:9000/38T9_zjAJal3p8MGnObSbQ">https://gdrb06.cern.ch:9000/38T9_zjAJal3p8MGnObSbQ</a>	3	NO	
<a href="https://gdrb06.cern.ch:9000/8nITDtM0ImQh8UFvw6JCjA">https://gdrb06.cern.ch:9000/8nITDtM0ImQh8UFvw6JCjA</a>	3	NO	
<a href="https://gdrb06.cern.ch:9000/A9glQbLFWG6L2xzbleE1Jw">https://gdrb06.cern.ch:9000/A9glQbLFWG6L2xzbleE1Jw</a>	3	NO	
<a href="https://gdrb06.cern.ch:9000/Mhgi4W-tpdQCgLCg6AHuA">https://gdrb06.cern.ch:9000/Mhgi4W-tpdQCgLCg6AHuA</a>	3	NO	
<a href="https://gdrb06.cern.ch:9000/S5QDD-MxG_zxzOwLGmnhlQ">https://gdrb06.cern.ch:9000/S5QDD-MxG_zxzOwLGmnhlQ</a>	3	NO	
<a href="https://gdrb06.cern.ch:9000/lto2-edlTGrfXjHRjCfA">https://gdrb06.cern.ch:9000/lto2-edlTGrfXjHRjCfA</a>	3	NO	
<a href="https://gdrb06.cern.ch:9000/a77LH4yQg1BIUg5OT6FPyA">https://gdrb06.cern.ch:9000/a77LH4yQg1BIUg5OT6FPyA</a>	3	NO	
<a href="https://gdrb06.cern.ch:9000/bXTH6FxWkZxe9eDqOE-2jg">https://gdrb06.cern.ch:9000/bXTH6FxWkZxe9eDqOE-2jg</a>	3	NO	
<a href="https://gdrb06.cern.ch:9000/eOcPdQhw9ZSvvHUSJGw65A">https://gdrb06.cern.ch:9000/eOcPdQhw9ZSvvHUSJGw65A</a>	3	NO	
<a href="https://gdrb06.cern.ch:9000/gbvGBdgoevSRtJO8XYd86Q">https://gdrb06.cern.ch:9000/gbvGBdgoevSRtJO8XYd86Q</a>	3	NO	
<a href="https://gdrb06.cern.ch:9000/jVonOSz1i3HtHqDizHMLeQ">https://gdrb06.cern.ch:9000/jVonOSz1i3HtHqDizHMLeQ</a>	3	NO	
<a href="https://gdrb06.cern.ch:9000/j_b5uqQOrrY4eCiCStt3UA">https://gdrb06.cern.ch:9000/j_b5uqQOrrY4eCiCStt3UA</a>	3	NO	
<a href="https://gdrb06.cern.ch:9000/jjy0UI6yK2l4UHJmOKWhNQ">https://gdrb06.cern.ch:9000/jjy0UI6yK2l4UHJmOKWhNQ</a>	3	NO	
<a href="https://gdrb06.cern.ch:9000/xzSgO5ptifqC_rq5DMUGGQ">https://gdrb06.cern.ch:9000/xzSgO5ptifqC_rq5DMUGGQ</a>	3	NO	
<a href="https://gdrb06.cern.ch:9000/yZAr_jR9JCE5eV_7-cWqNw">https://gdrb06.cern.ch:9000/yZAr_jR9JCE5eV_7-cWqNw</a>	3	NO	

# web interface (job view)

The job <https://gdrb06.cern.ch:9000/Mhgi4W-tpdQCgLJCg6AHuA> went through the following workflow:

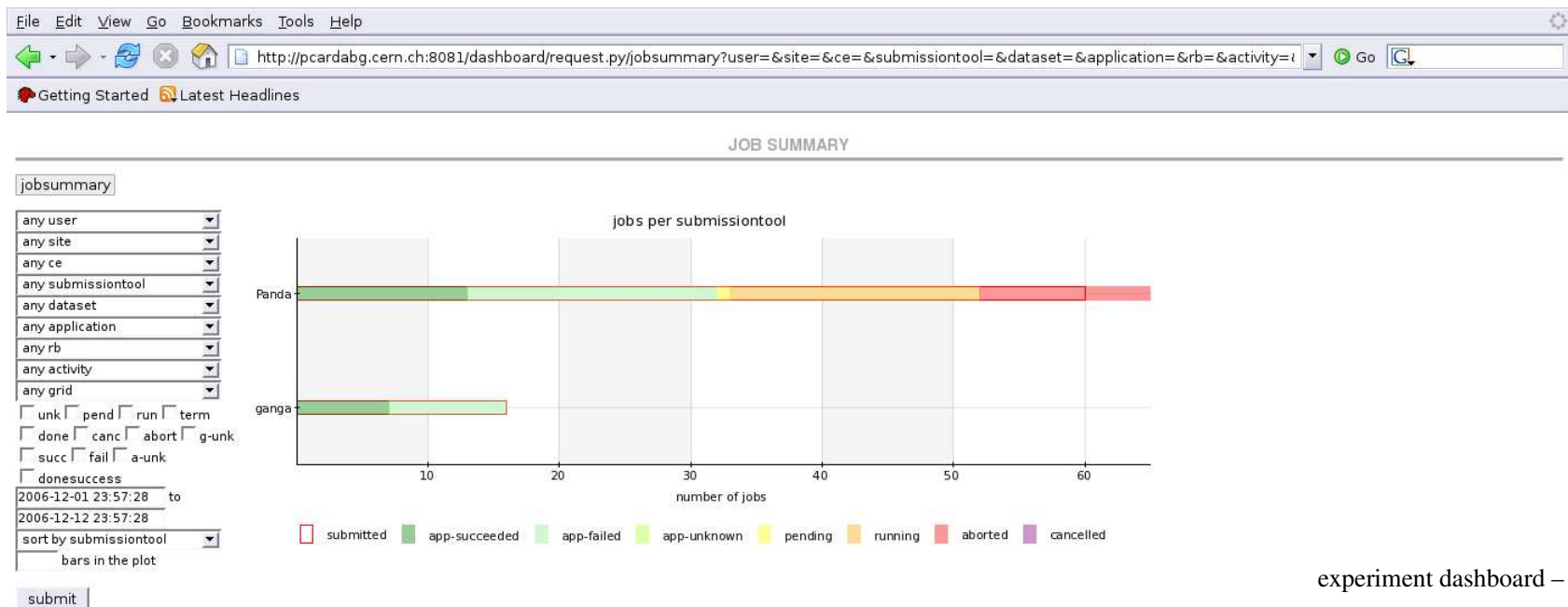


---

# **ATLAS specific job monitoring**

# ATLAS specific job monitoring

- Grid monitoring (RGMA, GridPP) is in place,
- using production job database for application level info (LCG, OSG, Nordugrid),
- current work: instrumentation of Ganga/ATLAS and Panda pilot jobs (OSG), for application and grid level info.



---

# **ATLAS data management monitoring**



# ATLAS data management monitoring

---

- dashboard application which is like a component of DDM.
  - DDM servers (running in VOboxes) are contacting the dashboard directly to report events (HTTP, already implemented in DDM),
  - data, interface, plots, actions, have been specified with developers and main users.
- the application handles a lot of data, very optimised database schema and queries,
- latest release before Christmas holidays, a lot of feedback since.

# main page

## Atlas Distributed Data Management

Overview

Dataset Info

Page Help

User Guide (soon)

Feedback

### OVERVIEW

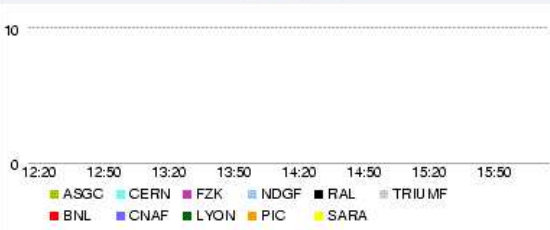
Overall Activity

Activity in Last Hour

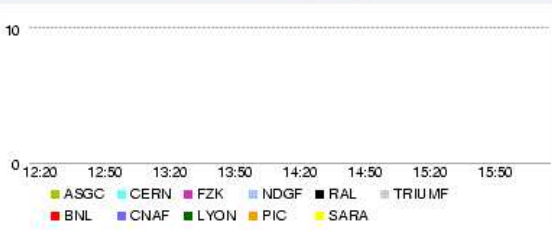
Activity in Last 4 Hours

Activity in Last 24 Hours

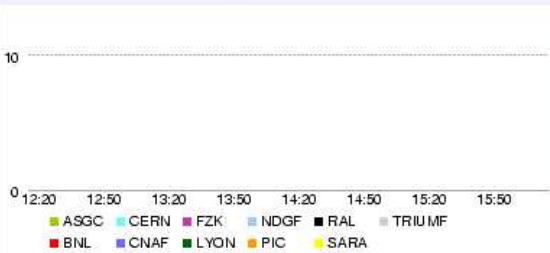
Throughput (mb/s)



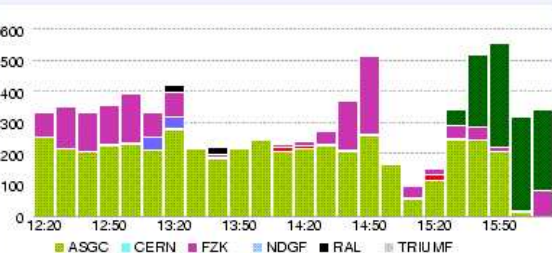
Data Transferred (GBytes)



Completed File Transfers



Total Number Errors



Activity Summary (Last 4 Hours)

Click on the cloud name to view list of sites

Cloud	Efficiency	Transfers			Errors			
		Avg Throughput	Files Done	Add DS Rep	File Transfer	Qry DS Files	Local Lkup	Rmt Lkup
ASGC	0%	0 mb/s	0	0	4687	0	0	0
BNL	0%	0 mb/s	0	0	80	0	0	0
CERN	0%	0 mb/s	0	0	4	0	0	0
CNAF	0%	0 mb/s	0	0	88	0	0	0
FZK	0%	0 mb/s	0	0	1518	0	0	0
LYON	0%	0 mb/s	0	0	1212	0	0	0

# main table (table)



# main page (cloud detail)



# datasets at a site

## Atlas Distributed Data Management

[Overview](#)[Dataset Info](#)[Page Help](#)[User Guide \(soon\)](#)[Feedback](#)

### ASGCDISK

[Dataset List](#)[Most Recent Events](#)[Most Recent Errors](#)[All Cloud Sites](#)[ASGCDISK](#)[ASGCTAPE](#)[AST2](#)[AU-UNIMELB](#)[TW-IPAS-T2](#)

Expected Date Format: 'YYYY-MM-DD HH:MM:SS'

☒ CANCELED☒ INCOMPLETE☒ COMPLETE☒ QUEUED

From:

To:

Limit: 30

[Reset](#)[Refresh](#)

Click on the 'Last Update' cell of each row to see dataset details

 30 to 60

Last Update	Dataset Name	State
2007-01-09 16:22:56	csc11.007216.singlepart_mu18.recon.CBNT.v11004103	INCOMPLETE
2007-01-09 16:21:53	csc11.005200.T1_McAtNlo_Jimmy.recotrig.AOD.v11000505	INCOMPLETE
2007-01-09 16:20:39	csc11.007004.singlepart_e_Et40.recon.ESD.v11004103	INCOMPLETE
2007-01-09 16:20:02	csc11.005621.Gmm_500_pythia_photos.recon.CBNT.v11004103	INCOMPLETE
2007-01-09 16:19:34	mc12.006353.AcerMC_Zbb_tautau.evgen.EVNT.v12000401_tid004431	INCOMPLETE
2007-01-09 16:19:05	csc11.005020.FJ1_pythia_jetjet.recon.CBNT.v11004103	INCOMPLETE
2007-01-09 16:18:41	alpgen205.008122.ZtautauPiZNp4	INCOMPLETE
2007-01-09 16:18:06	csc11.007043.singlepart_gamma_Et120.recon.CBNT.v11004103	INCOMPLETE
2007-01-09 16:17:41	csc11.007061.singlepart_e_E100.recon.ESD.v11004103	INCOMPLETE
2007-01-09 16:16:25	csc11.007211.singlepart_mu10.recon.CBNT.v11004103	INCOMPLETE
2007-01-09 16:14:41	csc11.005332.PythiaH120tautauhh.simul.HITS.v11004204_tid001783	INCOMPLETE
2007-01-09 16:12:50	csc11.005093.PythiaPhotonJet4.digit.log.v11004206_tid002554	INCOMPLETE
2007-01-09 16:11:44	csc11.005854.WH400bb_pythia.recon.CBNT.v11004103	INCOMPLETE
2007-01-09 16:11:09	csc11.005102.JimmyWtaunu.recon.AOD.v11004103	INCOMPLETE
2007-01-09 16:10:03	csc11.007007.singlepart_e_Et500.recon.CBNT.v11004103	INCOMPLETE
2007-01-09 16:09:47	csc11.005029.J3_pythia_jetjet_900.recon.CBNT.v11004206	INCOMPLETE
2007-01-09 16:09:27	csc11.005015.J6_pythia_jetjet.recon.ESD.v11004201	INCOMPLETE
2007-01-09 16:08:57	csc11.005144.PythiaZee.recon.CBNT.v11004201	INCOMPLETE
2007-01-09 16:06:00	csc11.005927.McAtNlo0310_JIMMY_Wtaunu_tautau.recon.AOD.v11004206	INCOMPLETE



# datasets at a site (detail)

## Atlas Distributed Data Management

[Overview](#)[Dataset Info](#)[Page Help](#)[User Guide \(soon\)](#)[Feedback](#)

### ASGCDISK

[Dataset List](#)[Most Recent Events](#)[Most Recent Errors](#)[All Cloud Sites](#)[ASGCDISK](#)[ASGCTAPE](#)[AST2](#)[AU-UNIMELB](#)[TW-IPAS-T2](#)

Expected Date Format: 'YYYY-MM-DD HH:MM:SS'

☒ CANCELED☒ INCOMPLETE☒ COMPLETE☒ QUEUED

From:

To:

Limit: 30

[Reset](#)[Refresh](#)

Click on the 'Last Update' cell of each row to see dataset details

 30 to 60

Last Update	Dataset Name	State
2007-01-09 16:22:56	csc11.007216.singlepart_mu18.recon.CBNT.v11004103	INCOMPLETE
2007-01-09 16:21:53	csc11.005200.T1_McAtNlo_Jimmy.recotrig.AOD.v11000505	INCOMPLETE
2007-01-09 16:20:39	csc11.007004.singlepart_e_Et40.recon.ESD.v11004103	INCOMPLETE
DUID: 00d428c0-41bb-da11-98c8-00034731f394 VUID: b52aedd9-12d1-489d-90cf-0908c3d15b06 CREATION: 2006-11-24 12:42:14 VERSION: 1		
2007-01-09 16:20:02	csc11.005621.Gmm_500_pythia_photos.recon.CBNT.v11004103	INCOMPLETE
2007-01-09 16:19:34	mc12.006353.AcerMC_Zbb_tautau.evgen.EVNT.v12000401_tid004431	INCOMPLETE
2007-01-09 16:19:05	csc11.005020.FJ1_pythia_jetjet.recon.CBNT.v11004103	INCOMPLETE
2007-01-09 16:18:41	alpgen205.008122.ZtautauPIZNp4	INCOMPLETE
2007-01-09 16:18:06	csc11.007043.singlepart_gamma_Et120.recon.CBNT.v11004103	INCOMPLETE
2007-01-09 16:17:41	csc11.007061.singlepart_e_Et100.recon.ESD.v11004103	INCOMPLETE
2007-01-09 16:16:25	csc11.007211.singlepart_mu10.recon.CBNT.v11004103	INCOMPLETE
2007-01-09 16:14:41	csc11.005332.PythiaH120tautauhh.simul.HITS.v11004204_tid001783	INCOMPLETE
2007-01-09 16:12:50	csc11.005093.PythiaPhotonJet4.digit.log.v11004206_tid002554	INCOMPLETE
2007-01-09 16:11:44	csc11.005854.WH400bb_pythia.recon.CBNT.v11004103	INCOMPLETE
2007-01-09 16:11:09	csc11.005102.JimmyWtaunu.recon.AOD.v11004103	INCOMPLETE
2007-01-09 16:10:03	csc11.007007.singlepart_e_Et500.recon.CBNT.v11004103	INCOMPLETE
2007-01-09 16:09:47	csc11.005029.J3_pythia_jetjet_900.recon.CBNT.v11004206	INCOMPLETE
2007-01-09 16:09:27	csc11.005015.i6_pythia_jetjet.recon.ESD.v11004201	INCOMPLETE

# files in a dataset

## Atlas Distributed Data Management

[Overview](#)[Dataset Info](#)[Page Help](#)[User Guide \(soon\)](#)[Feedback](#)

### ASGCDISK

[Dataset List](#)[Most Recent Events](#)[Most Recent Errors](#)[All Cloud Sites](#)[ASGCDISK](#)[ASGCTAPE](#)[AST2](#)[AU-UNIMELB](#)[TW-IPAS-T2](#)

Expected Date Format: 'YYYY-MM-DD HH:MM:SS'

From:

To:

Limit:

30

[Reset](#)[Refresh](#)Click on the *Last Update* cell of each row for details of file on site[+](#) 30 to 60

Last Update	Logical File Name	State
2007-01-09 15:51:22	csc11.007085.singlepart_gamma_E500.recon.ESD.v11004206__00016.pool.root.1	ASSIGNED
2007-01-09 15:51:22	csc11.007085.singlepart_gamma_E500.recon.ESD.v11004206__00053.pool.root.1	ASSIGNED
2007-01-09 15:51:22	csc11.007085.singlepart_gamma_E500.recon.ESD.v11004206__00080.pool.root.1	ASSIGNED
2007-01-09 15:51:22	csc11.007085.singlepart_gamma_E500.recon.ESD.v11004206__00091.pool.root.1	ASSIGNED
2007-01-09 15:51:22	csc11.007085.singlepart_gamma_E500.recon.ESD.v11004206__00117.pool.root.1	ASSIGNED
2007-01-09 15:51:22	csc11.007085.singlepart_gamma_E500.recon.ESD.v11004206__00004.pool.root.1	ASSIGNED
<div><div>GUID: 12683FF8-4C2B-DB11-8F08-00142272FD51</div><div>CREATION: 2006-11-24 11:49:31</div><div>SURL: srm://castor.sc.grid.sinica.edu.tw/castor/grid.sinica.edu.tw/sc/atlas/csc11/csc11.007085.singlepart_gamma_E500.recon.ESD.v11004206/csc11.007085.singlepart_gamma_E500.recon.ESD.v11004206__00004.pool.root.1</div></div>		
2007-01-09 15:51:22	csc11.007085.singlepart_gamma_E500.recon.ESD.v11004206__00126.pool.root.1	ASSIGNED
2007-01-09 15:51:22	csc11.007085.singlepart_gamma_E500.recon.ESD.v11004206__00143.pool.root.1	ASSIGNED
2007-01-09 15:51:22	csc11.007085.singlepart_gamma_E500.recon.ESD.v11004206__00007.pool.root.1	ASSIGNED
<div><div>GUID: A41C33CF-432B-DB11-9938-001422730FBA</div><div>CREATION: 2006-11-24 11:49:32</div><div>SURL: srm://castor.sc.grid.sinica.edu.tw/castor/grid.sinica.edu.tw/sc/atlas/csc11/csc11.007085.singlepart_gamma_E500.recon.ESD.v11004206/csc11.007085.singlepart_gamma_E500.recon.ESD.v11004206__00007.pool.root.1</div></div>		
2007-01-09 15:51:22	csc11.007085.singlepart_gamma_E500.recon.ESD.v11004206__00036.pool.root.1	ASSIGNED
2007-01-09 15:51:22	csc11.007085.singlepart_gamma_E500.recon.ESD.v11004206__00096.pool.root.1	ASSIGNED
2007-01-09 15:51:22	csc11.007085.singlepart_gamma_E500.recon.ESD.v11004206__00020.pool.root.1	ASSIGNED
2007-01-09 15:51:22	csc11.007085.singlepart_gamma_E500.recon.ESD.v11004206__00139.pool.root.1	ASSIGNED
2007-01-09 15:51:22	csc11.007085.singlepart_gamma_E500.recon.ESD.v11004206__00001.pool.root.1	ASSIGNED

# recent events in a site

## Atlas Distributed Data Management

[Overview](#)[Dataset Info](#)[Page Help](#)[User Guide \(soon\)](#)[Feedback](#)

### ASGCDISK

[Dataset List](#)[Most Recent Events](#)[Most Recent Errors](#)[All Cloud Sites](#)[ASGCDISK](#)[ASGCTAPE](#)[AST2](#)[AU-UNIMELB](#)[TW-IPAS-T2](#)

Expected Date Format: 'YYYY-MM-DD HH:MM:SS'

From: 2007-01-08 16:28:56

To:

Limit: 30

[Reset](#)[Refresh](#)Click on the *Placement Time* cell of each row for details 30 to 60

Placement Time	Logical File Name	State
2007-01-09 16:27:30	db0e2d75-0c98-412b-b8c1-c06923ec3a55	ASSIGNED
2007-01-09 16:27:30	324abe9a-21e7-42df-b472-c13e65d8506a	ASSIGNED
2007-01-09 16:27:30	13b3f2c9-7131-40a2-8717-e84a440c2412	ASSIGNED
2007-01-09 16:27:30	de6aa454-f853-4035-b2d0-2d75660e6d4a	ASSIGNED
2007-01-09 16:24:46	70029BF9-698E-DB11-8B30-000E0C09910C	PENDING
2007-01-09 16:22:56	4EA81DDB-9FA8-DA11-86D9-00123F20CBD1	ASSIGNED
2007-01-09 16:22:56	1c7c1eaa-cc35-4741-9ab2-1e13c057be52	ASSIGNED
2007-01-09 16:22:56	a48bdf87-8947-4a73-b901-cf41328e31d1	ASSIGNED
2007-01-09 16:22:56	1CF71417-73A8-DA11-8E02-00123F20CB86	ASSIGNED
2007-01-09 16:22:56	AAC41BC5-85A8-DA11-9A3F-00123F20AAC2	ASSIGNED
2007-01-09 16:22:56	cdb7d3f0-17d7-4cad-aebd-7ecf88300701	ASSIGNED
2007-01-09 16:22:56	001a564b-bf1b-4c4d-917a-92d4f42a7085	ASSIGNED
2007-01-09 16:22:56	785ce8ab-7080-4ebe-9546-0cd1fb3569ff	ASSIGNED
2007-01-09 16:22:56	6464b668-bfc4-41e7-94fd-1f58d55758a9	ASSIGNED
2007-01-09 16:22:56	b08efd1a-55e2-44b0-b28b-32080589f241	ASSIGNED
2007-01-09 16:22:56	4A247347-7AA8-DA11-9194-00123F20B86F	ASSIGNED
2007-01-09 16:22:56	f4861644-c14c-419f-a184-7d803b39b7d1	ASSIGNED
2007-01-09 16:22:56	aaa5261d-22ef-41ac-95a6-c30f0a6cf7b1	ASSIGNED
2007-01-09 16:22:56	9A122E65-7CA8-DA11-9AE3-00123F20D06F	ASSIGNED
2007-01-09 16:22:56	aa170f4e-7c29-4758-be31-a895c075822f	ASSIGNED



# recent events for a file

## Atlas Distributed Data Management

[Overview](#)[Dataset Info](#)[Page Help](#)[User Guide \(soon\)](#)[Feedback](#)

### ASGCDISK

[Dataset List](#)[Most Recent Events](#)[Most Recent Errors](#)

#### All Cloud Sites

[ASGCDISK](#)[ASGCTAPE](#)[AST2](#)[AU-UNIMELB](#)[TW-IPAS-T2](#)

Expected Date Format: 'YYYY-MM-DD HH:MM:SS'

From:

To:

Limit:

10

[Reset](#)[Refresh](#)Click on the *Placement Time* cell of each row for details

Placement Time	Logical File Name	State
2007-01-09 16:27:30	de6aa454-f853-4035-b2d0-2d75660e6d4a	ASSIGNED
2007-01-09 16:12:50	de6aa454-f853-4035-b2d0-2d75660e6d4a	PENDING
2007-01-09 03:50:29	de6aa454-f853-4035-b2d0-2d75660e6d4a	ASSIGNED
2007-01-09 03:43:49	de6aa454-f853-4035-b2d0-2d75660e6d4a	PENDING
2007-01-08 15:15:02	de6aa454-f853-4035-b2d0-2d75660e6d4a	ASSIGNED
2007-01-08 15:07:32	de6aa454-f853-4035-b2d0-2d75660e6d4a	PENDING
2007-01-08 02:38:41	de6aa454-f853-4035-b2d0-2d75660e6d4a	ASSIGNED
2007-01-07 15:23:49	de6aa454-f853-4035-b2d0-2d75660e6d4a	ASSIGNED
2007-01-07 13:54:20	de6aa454-f853-4035-b2d0-2d75660e6d4a	PENDING
2007-01-07 02:27:19	de6aa454-f853-4035-b2d0-2d75660e6d4a	ASSIGNED
2007-01-06 12:49:50	de6aa454-f853-4035-b2d0-2d75660e6d4a	ASSIGNED
2007-01-06 00:13:55	de6aa454-f853-4035-b2d0-2d75660e6d4a	ASSIGNED
2007-01-05 12:44:35	de6aa454-f853-4035-b2d0-2d75660e6d4a	ASSIGNED
2007-01-05 00:06:59	de6aa454-f853-4035-b2d0-2d75660e6d4a	ASSIGNED
2007-01-04 11:29:05	de6aa454-f853-4035-b2d0-2d75660e6d4a	ASSIGNED
2007-01-04 10:15:37	de6aa454-f853-4035-b2d0-2d75660e6d4a	PENDING
2007-01-03 21:46:36	de6aa454-f853-4035-b2d0-2d75660e6d4a	ASSIGNED
2007-01-03 10:13:56	de6aa454-f853-4035-b2d0-2d75660e6d4a	ASSIGNED
2007-01-03 09:00:46	de6aa454-f853-4035-b2d0-2d75660e6d4a	PENDING
2007-01-02 20:31:54	de6aa454-f853-4035-b2d0-2d75660e6d4a	ASSIGNED
2007-01-02 07:55:43	de6aa454-f853-4035-b2d0-2d75660e6d4a	ASSIGNED

# recent errors

## Atlas Distributed Data Management

[Overview](#)[Dataset Info](#)[Page Help](#)[User Guide \(soon\)](#)[Feedback](#)

### ASGCDISK

[Dataset List](#)[Most Recent Events](#)[Most Recent Errors](#)[All Cloud Sites](#)[ASGCDISK](#)[ASGCTAPE](#)[AST2](#)[AU-UNIMELB](#)[TW-IPAS-T2](#)

Expected Date Format: 'YYYY-MM-DD HH:MM:SS'

- ☒ **ADD\_DS\_REPLICA**
- ☒ **LOCAL\_FILE\_LOOKUP**
- ☒ **FILE\_TRANSFER**
- ☒ **QUERY\_FILES\_IN\_DS**
- ☒ **RMT\_FILE\_LOOKUP**

From: 2007-01-08 16:35:33

To:

Limit: 30

[Reset](#)[Refresh](#)Click on the *Error Time* cell of each row for error details

180 to 210

240 to 270

Error Time	Dataset / File Name	Error Type
2007-01-09 16:11:23	csc11.005854.WH400bb_pythia.recon.CBNT.v11004103_00046.root.2	FILE_TRANSFER_ERROR
2007-01-09 16:11:22	csc11.005854.WH400bb_pythia.recon.CBNT.v11004103_00040.root.2	FILE_TRANSFER_ERROR
2007-01-09 16:11:21	csc11.005854.WH400bb_pythia.recon.CBNT.v11004103_00031.root.2	FILE_TRANSFER_ERROR
2007-01-09 16:11:20	csc11.005854.WH400bb_pythia.recon.CBNT.v11004103_00021.root.2	FILE_TRANSFER_ERROR
GUID: 719f1023-7a3d-4463-b7d3-150afc342e43		
REASON: State from FTS: Failed; Retries: 1; Reason: No Channel found or VO not authorized for transferring between BN-LCG2 and TAIWAN-LCG2		
2007-01-09 16:11:19	csc11.005854.WH400bb_pythia.recon.CBNT.v11004103_00038.root.3	FILE_TRANSFER_ERROR
2007-01-09 16:11:08	csc11.005102.JimmyWtaunu.recon.AOD.v11004103_00009.pool.root	FILE_TRANSFER_ERROR
2007-01-09 16:11:07	csc11.005102.JimmyWtaunu.recon.AOD.v11004103_00005.pool.root	FILE_TRANSFER_ERROR
GUID: E691EEEE-9AB0-DA11-89B4-00304870E186		
REASON: State from FTS: Failed; Retries: 1; Reason: No Channel found or VO not authorized for transferring between BN-LCG2 and TAIWAN-LCG2		
2007-01-09 16:11:06	csc11.005102.JimmyWtaunu.recon.AOD.v11004103_00048.pool.root	FILE_TRANSFER_ERROR
2007-01-09 16:11:05	csc11.005102.JimmyWtaunu.recon.AOD.v11004103_00019.pool.root	FILE_TRANSFER_ERROR
2007-01-09 16:11:04	csc11.005102.JimmyWtaunu.recon.AOD.v11004103_00028.pool.root	FILE_TRANSFER_ERROR
2007-01-09 16:11:03	csc11.005102.JimmyWtaunu.recon.AOD.v11004103_00049.pool.root	FILE_TRANSFER_ERROR
2007-01-09 16:11:02	csc11.005102.JimmyWtaunu.recon.AOD.v11004103_00002.pool.root	FILE_TRANSFER_ERROR

---

# **ALICE data transfers**

# ALICE data transfers

---

- similar display we saw for *site reliability*,
- data is taken from ALICE monitoring database and exported to daily summaries.

# screenshot

- data transfers from CERN to ALICE T1.

Transfers done on: Wed 13 Dec 2006

Site (click on any site)	Successful transfers	Failed transfers	Efficiency
ALICE::RAL::CASTOR	1	530	0.19 %
ALICE::RAL::LOG	493	1052	31.91 %
Error message			Counter
The FTS transfer _transferid_ failed ( Failed to get proxy certificate from lcgrbp01.gridpp.rl.ac.uk . Reason is ERROR from server: Credentials do not exist)			559
			415
The FTS transfer _transferid_ failed ( Failed on SRM get: Cannot Contact SRM Service. Error in srm__ping: SOAP-ENV:Client - CGSI-gSOAP: Could not open connection !)			71
asking the SE: Inappropriate ioctl for device			3
The FTS transfer _transferid_ failed ( Transfer failed. ERROR an end-of-file was reached)			2
The FTS transfer _transferid_ failed ( Failed on SRM get: Failed SRM get on httpg://castorgridsc.cern.ch:8443/srm/managerv1			2
ALICE::CCIN2P3::LOG	1193	912	56.67 %
ALICE::CCIN2P3::TAPE	1205	788	60.46 %

---

# **conclusion**

# conclusion

---

- *VO-oriented* tool,
- used by CMS since more than a year,
- ported job monitoring to ATLAS year, plus DDM monitoring,
- specific applications: DDM, site reliability, data transfers,
- now moving to LHCb and ALICE,
- good feedback, collaboration with CMS and ATLAS.

future plans:

- software: increase deployment ease,
- alarms, recognition of pathologic patterns.