



Accounting Update

John Gordon, CCLRC-RAL
10/1/2007



Outline

- Update to December GDB was rushed
 - Time now for more discussion
 - [December Slides](#)
- Accounting issues were discussed at MB on December 19th and January 9th
 - Summary
- Storage Accounting
 - Repeat December info with latest news



Summary of MB Decisions - January 2007

1. Accounting should move to automatically-generated reports as soon as possible.
 - a) The APEL repository will be the source of data
 - b) The target is 1st March 2007 but sites should publish data back to 1/1/2007 if possible.
 - c) Sites can send an additional manual report until the end of May
 - d) If sites wish their non-Grid usage to be reported to CRRB then they should use the APEL publishing tools to add this data to the repository.
2. Tier2 Accounting
 1. Reports to C-RRB should include Tier2 data.
 2. The source of the data will be the APEL repository.
 3. Data will be reported from 1 April 07. All T2s should be publishing by 1 September to enable report to C-RRB in October.
3. User Level Accounting
 1. gLite 3.0.1u10 has encrypted DN included in UR but not published by default.
 2. Sites should install this release and configure it to publish encrypted user data. Target for T1s 1 June but everyone welcome to publish
 3. No DNs will be viewable until policy agreed.



Actions

- T1s compare recent APEL cpu data for their site with their recent manual reports
- T1s consider whether they should report their non-Grid use.
- T2s check they have been publishing into APEL reliably
 - T1s help their T2s with this.
- T1s start publishing user data
 - T2s follow suit if no problems.
- OSG T2s to pass cpu data to APEL
- OSG to publish user DN information



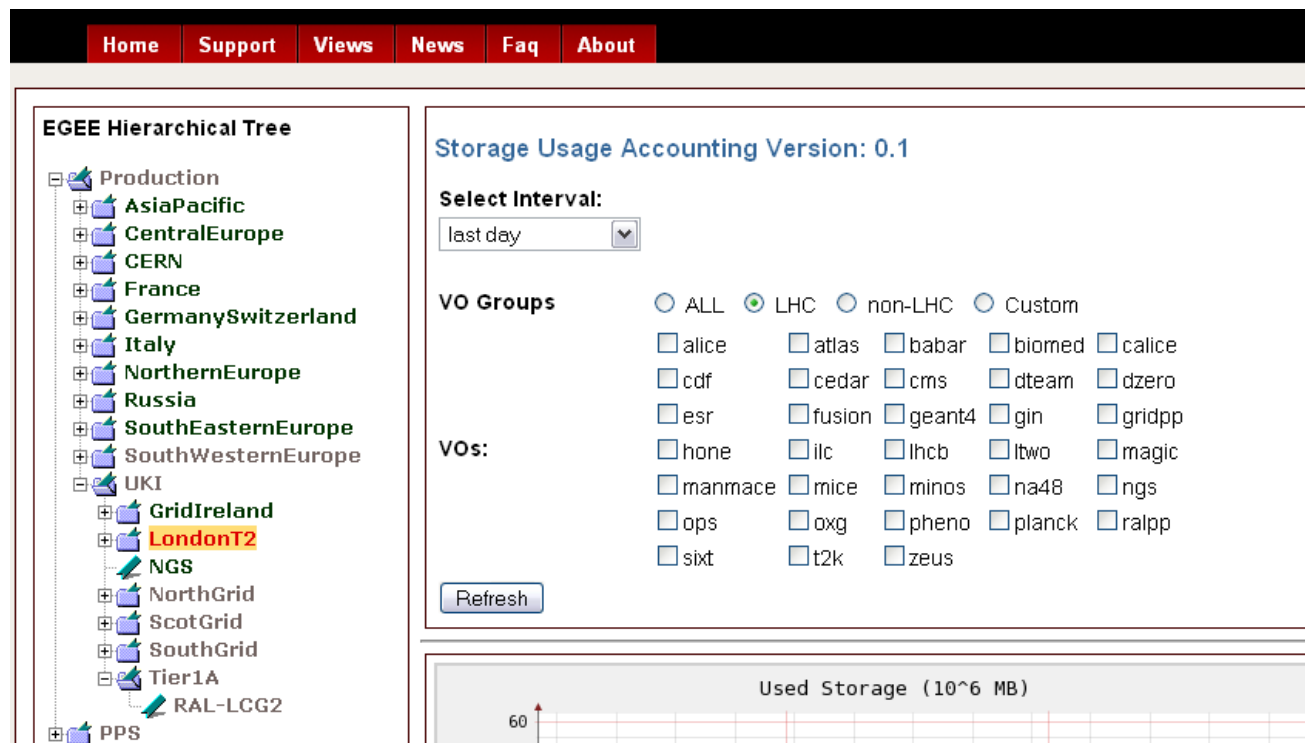
Storage Accounting

- A Storage Accounting schema has been defined
- A single storage accounting sensor at Edinburgh queries the BDII once per day to gather information on current storage usage from all EGEE sites
- This sensor populates an R-GMA archiver with the gathered information
 - StorageRecords table
- The information is aggregated per VO/Site/Month as in APEL
 - Value stored is average over the number of measurements
 - $\text{Sum}(\text{measurements})/\text{N}(\text{measurements})$
- APEL-like visualisation interface has been developed
 - Grids, countries, regions
 - Only tables for country and region implemented so far
 - <http://goc02.grid-support.ac.uk/accountingDisplay/>



Storage Accounting Display

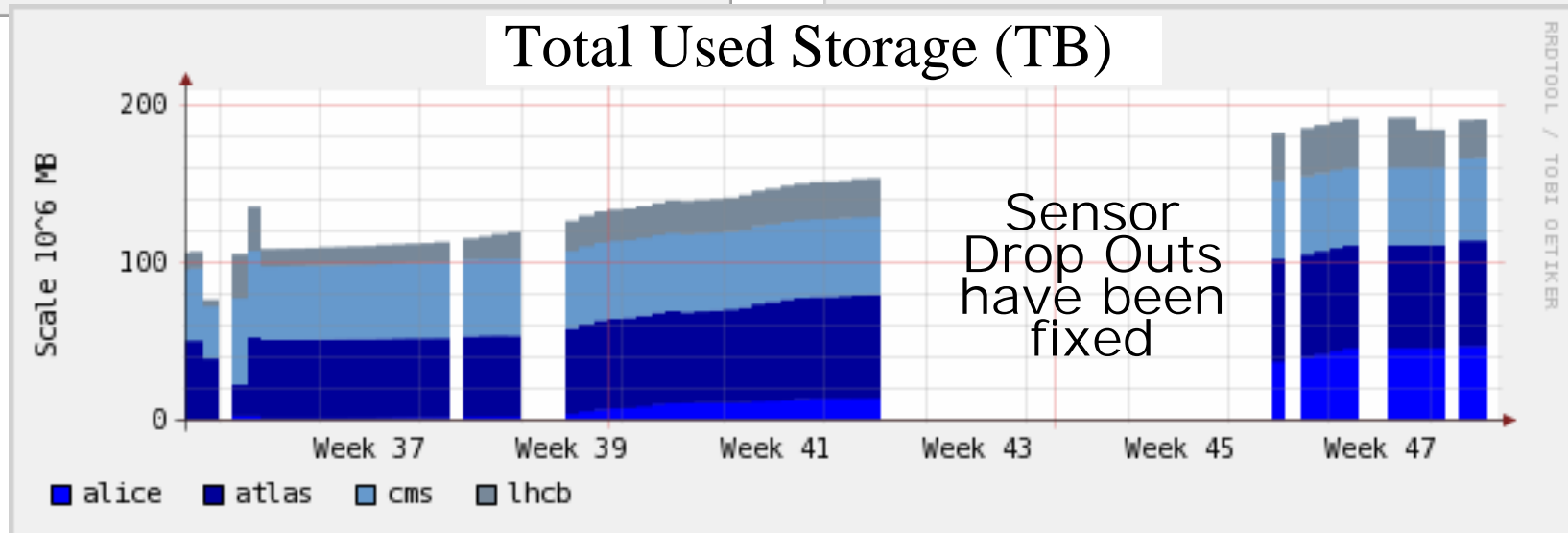
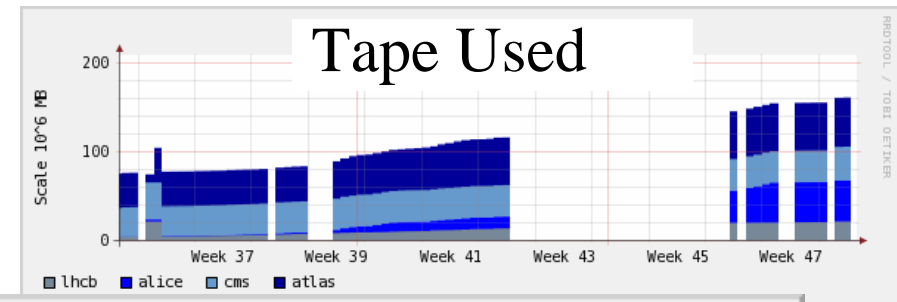
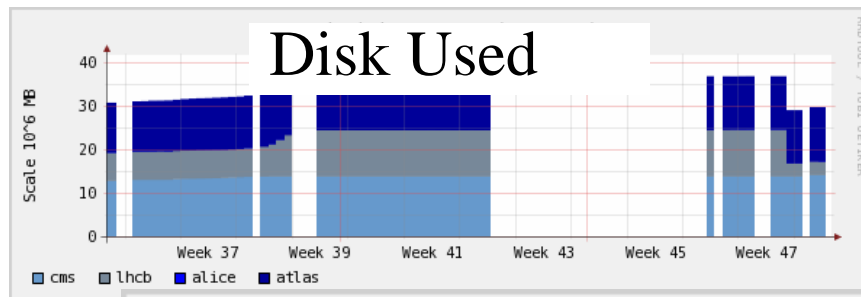
- Visualisation of Storage Used per VO for Disk and Tape
- <http://goc02.grid-support.ac.uk/accountingDisplay/view.php>
 - Select Resources via a Tree
 - Select time interval (last year, last month, last week, last day)





Storage Accounting Display

- Looking at data for RAL-LCG2
- Storage units are 1TB = 10^6 MB
- Tape Used + Disk Used = Total





Issues

- Data not complete. Still only a prototype so sometimes doesn't run.
- Need to check correctness of data
 - Can T1s look at their published data and see if it makes sense?
 - Is it ready for automatic reporting?
- UK using new GIPs for DPM and dCache which report more accurate VO usage.
 - Can these be made production versions?
- More work to be done on display
 - Comments welcome