



# Readiness of Sri Lankan Team for GE2/1 production

01.10.2019

**Balashangar Kailasapathy**

University of Colombo, Sri Lanka

# Plan for GE 2/1 Assembly by Sri Lankan Team

- Assembling **38** modules of GE2/1 chambers and QC Tests upto **QC5**
  - **Will be performed within the time frame made by the GEM management**
  - **Expecting to complete at least 2-4 chambers per month in average (Based on the availability of raw materials)**
- CERN lab facilities (at B-904) (Clean Room, QC3, QC4 and QC5 stands) will be used.

## Sri Lankan Team

University of Ruhuna, Sri Lanka

- Prof. W. G. D. Dharmaratna (**Dharma**)
- Dr. Nadeesha Manohari Wickramage (**Nadeesha**)
- Ms. Kalpanie Madara Liyanage (**Kalpanie**) (PhD Student)
- Mr. Nimantha Perera (**Nimantha**) (PhD Student)

University of Colombo, Sri Lanka

- Prof. Don Upul Jayasiri Sonnadara (**Upul**)
- Dr. Kithsiri Malagalage Jayananda (**Jayananda**)
- Mr. Balashangar Kailasapathy (**Bala**) (PhD Student)
- Mr. Dhammage Deshitha Chamikara Wickramarathna (**Deshitha**) (PhD Student)

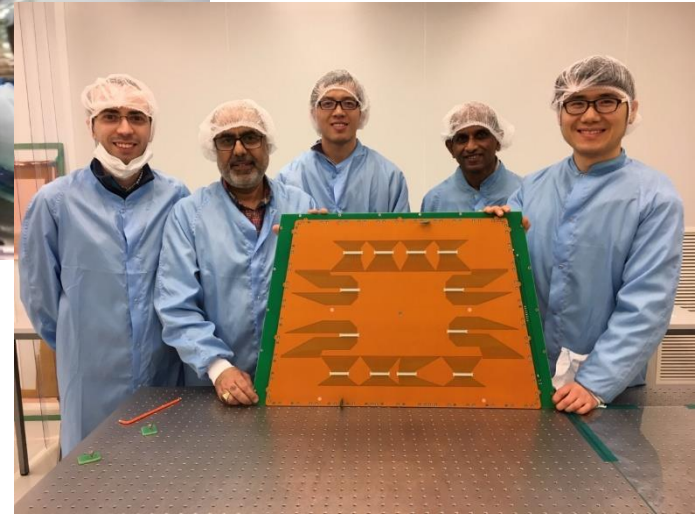
## Tentative Stay at CERN

Name	In 2020	In 2021
Dharma	2 Months	2 Months
Nadeesha	2 Months	2 Months
Upul	2 Months	2 Months
Jayananda	2 Months	2 Months
Bala	6 Months	6 Months
Deshitha	6 Months	6 Months
Nimantha	6 Months	6 Months
Kalpanie	6 Months	6 Months

**The dates of the 6 months stay of the students will be decided based on the arrival and availability of the raw materials**

# GE 2/1 Assembly Trainings

- Participated assembly training and QC tests (upto QC5) for all GE2/1 modules in 2018

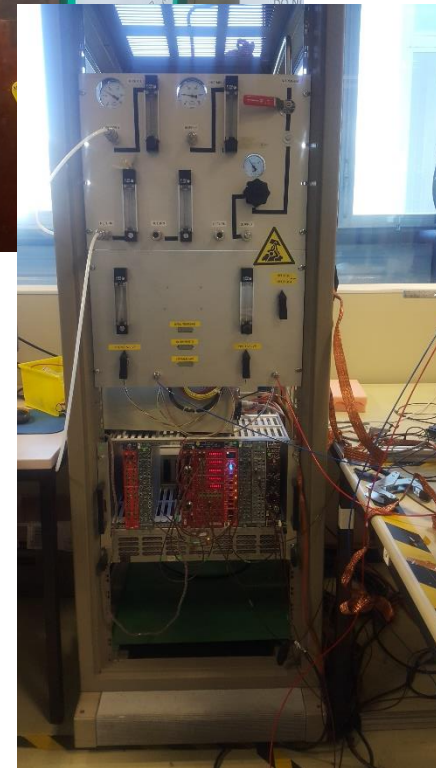
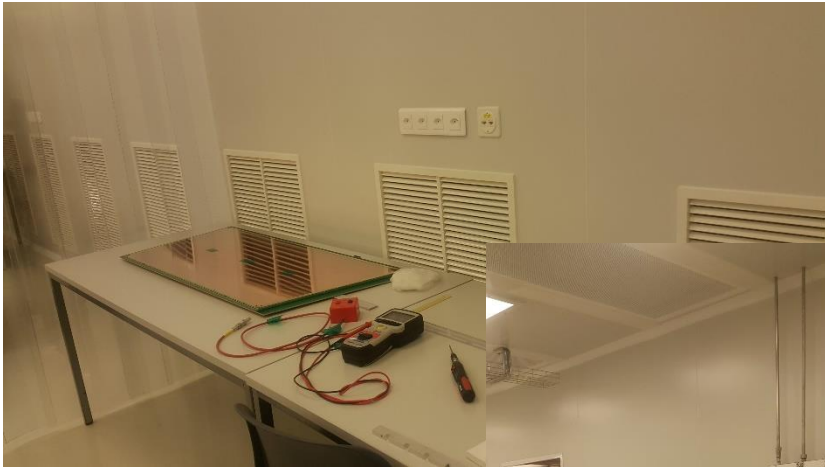


**Participation on QCs for GE1/1 chambers are an added experience for the QCs for GE2/1**

# CERN Facilities for Assembly and QC tests

Fully equipped clean room and QC facilities

Used for assembly and QC tests of all GE2/1 modules



# Summary

- Sri Lanka will use the CERN (904) facilities
- All team members are trained for GE2/1 assembly and QC tests
- Worked on GE1/1 QCs are additional experience for GE2/1 production