



# LCG-France

*Activities of the LCG tier-2 associated to tier-1 at CC-IN2P3*

Fabio Hernandez  
Frédérique Chollet

LCG Grid Deployment Board  
CERN, July 4th 2007



# Contents

- LCG-France project overview
- Planned vs. actual contribution
- Coordinated activities
- Current and future work
- Conclusions
- Questions



# LCG-France project overview

- **Goals**

- Setup, develop and maintain a LCG tier-1 and an Analysis Facility at CC-IN2P3
- Promote the creation of tier-2/tier-3 French sites and coordinate their integration into the WLCG collaboration

- **Funding**

- national funding for tier-1 and analysis facility
- Tier-2s and tier-3s are funded by universities, local/regional governments, hosting laboratories, ...

- **Organization**

- Started in June 2004
  - ♦ Scientific and technical leaders appointed, management (executive) and overview boards in place since then
- Formal coordination of tier-2 & tier-3s started on April 2006
  - ♦ Technical coordinator for tier-2s & tier-3s appointed

- **More information**

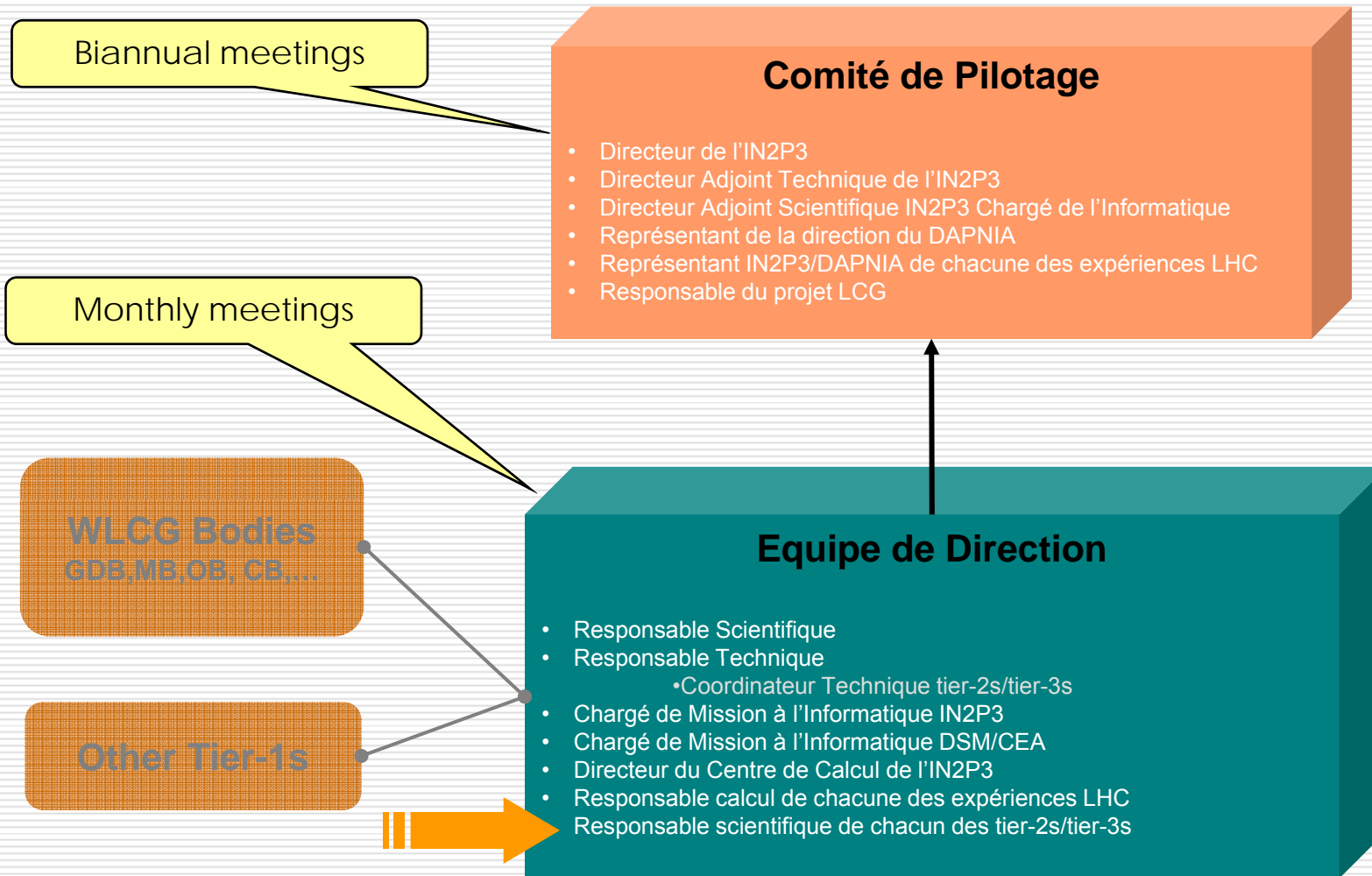
- Project web site: <http://lcg.in2p3.fr>
- Project charter: <https://edms.in2p3.fr/document/I-003682>



# Tier-2s & Tier-3s technical group

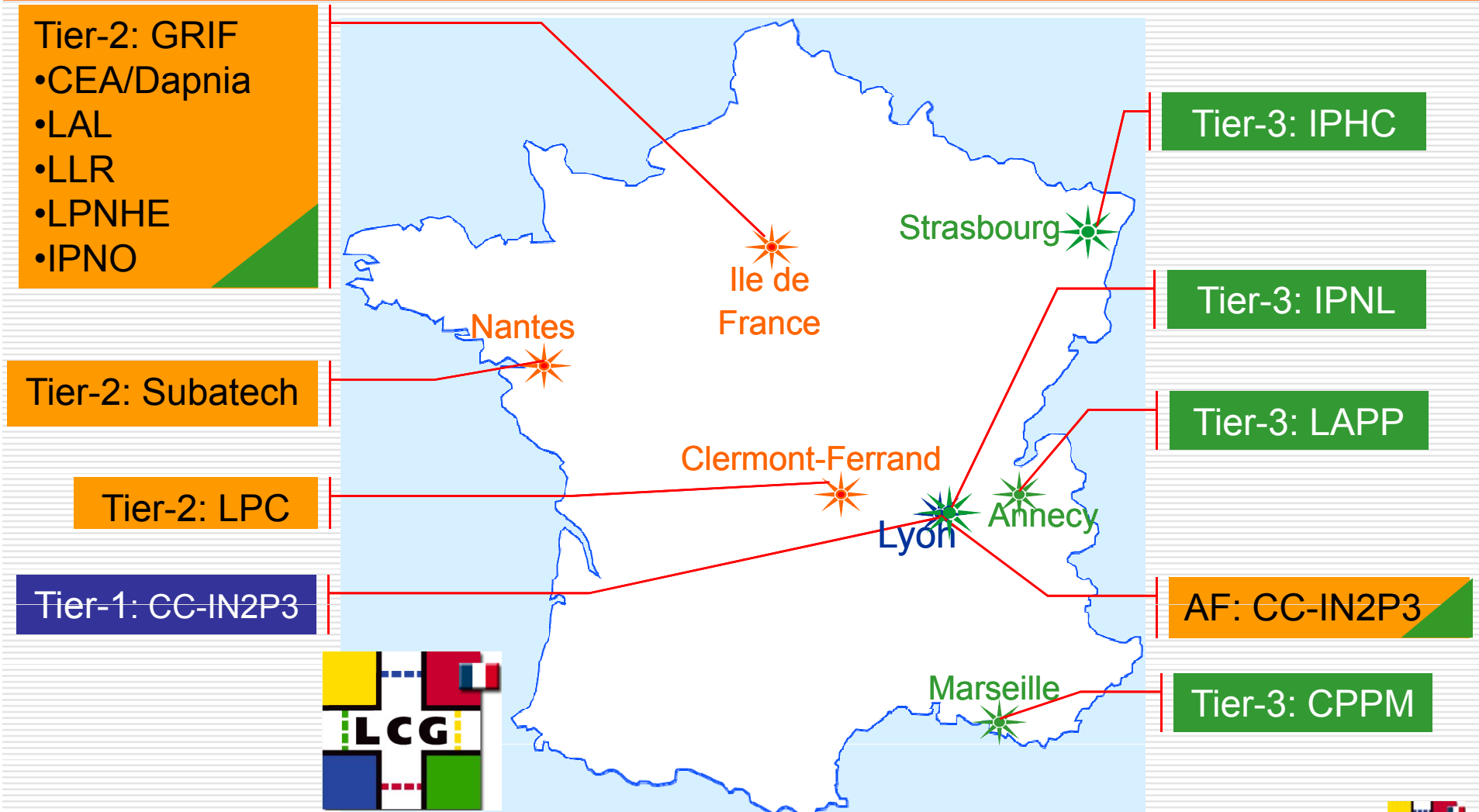
- Objectives
  - federate tier-2 & tier-3 technical teams and ensure their integration in the WLCG collaboration
  - coordinate the deployment of computing resources in tiers-2 & tiers-3 for simulation and analysis of LHC experiments
- Organization
  - Strong collaboration
    - ◆ with tier-1 at CC-IN2P3
    - ◆ with national experiment representatives
  - Monthly (remote) meetings with representatives of french sites
  - Separate, monthly (remote) meetings dedicated to foreign sites
  - Work in coordination with the EGEE operations organization in the region
    - ◆ Based at the tier-1, which acts as EGEE Regional Operations Centre
    - ◆ Includes non LHC sites (both academic and private)
  - Dedicated mailing list, wiki (<http://lcg.in2p3.fr/wiki/index.php/T2-T3>) and agenda category (<http://indico.in2p3.fr/categoryDisplay.py?categId=61>)

# LCG-France: project structure



Agendas: <http://indico.in2p3.fr/categoryDisplay.py?categId=59>

# LCG-France sites



# Foreign sites

- In close contact with some associated sites to the LCG-France tier-1
  - Europe
    - ◆ Belgium CMS Tier-2
    - ◆ Romanian Federation ATLAS Tier-2
  - Asia
    - ◆ IHEP China - ATLAS and CMS Tier2
    - ◆ ICEPP Japan - ATLAS Tier2

# Supported VOs

- Supported LHC experiments

- All sites also support other virtual organizations, including the EGEE official VOs and local users

		Alice	Atlas	CMS	LHCb
T1	CC-IN2P3	●	●	●	●
Tier-2	AF Lyon	●	●	●	●
	GRIF (Paris region)	●	●	●	●
	LPC (Clermont)	●	●		●
	Subatech (Nantes)	●			
Tier-3	CPPM (Marseille)		●		●
	IPHC (Strasbourg)	●		●	
	IPNL (Lyon)	●		●	
	LAPP (Annecy)		●		●

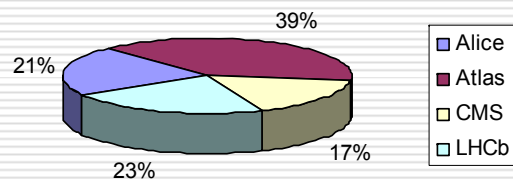


# Tier-2s Planned Contribution

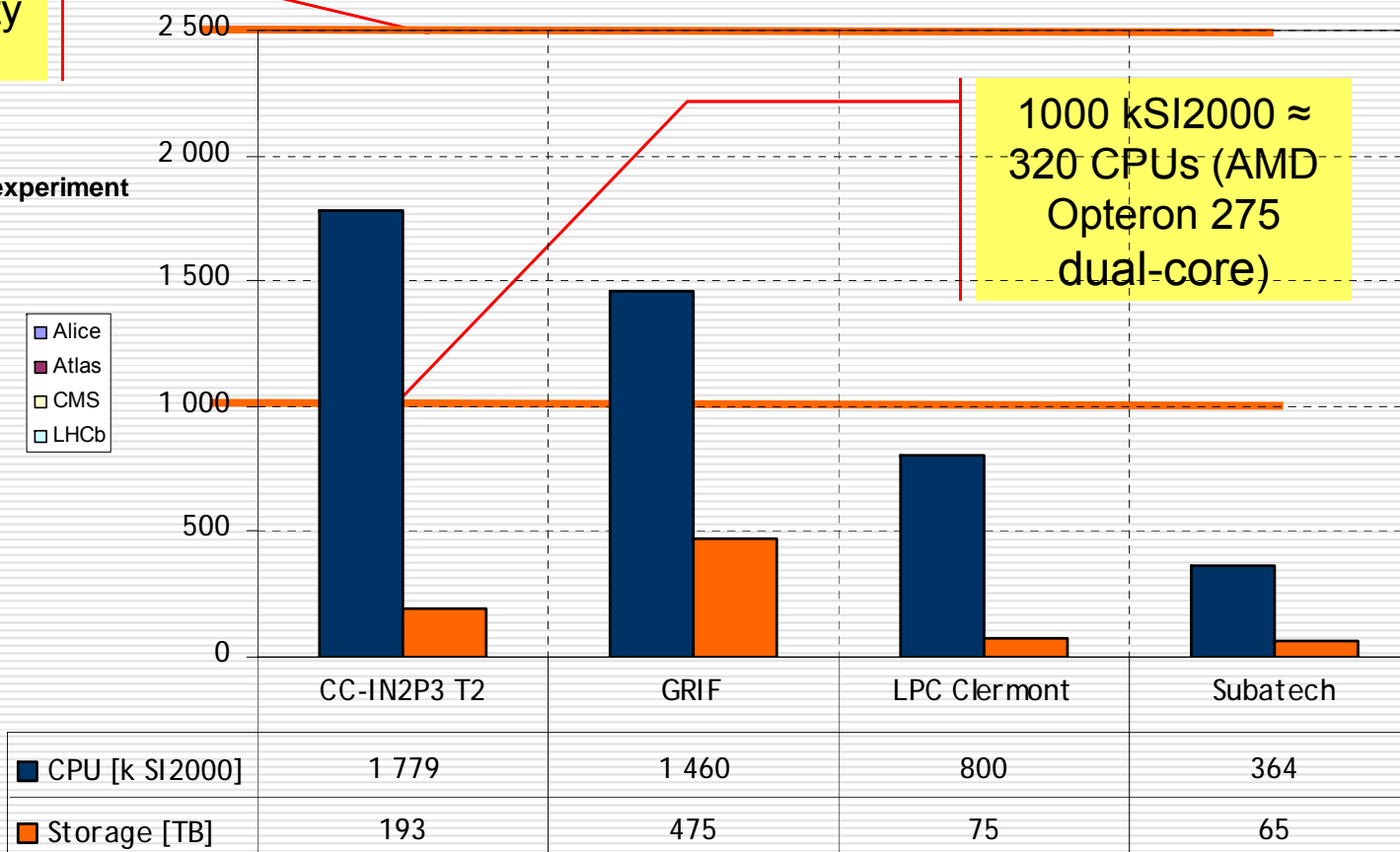
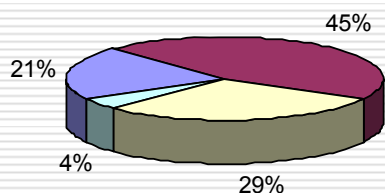
2.5 M SpecInt2000 :  
12/2006 CPU capacity  
of CC-IN2P3

Planned Capacity of LCG-France Tier-2 Sites in 2008

% of LCG-France resources per experiment  
CPU (2008)

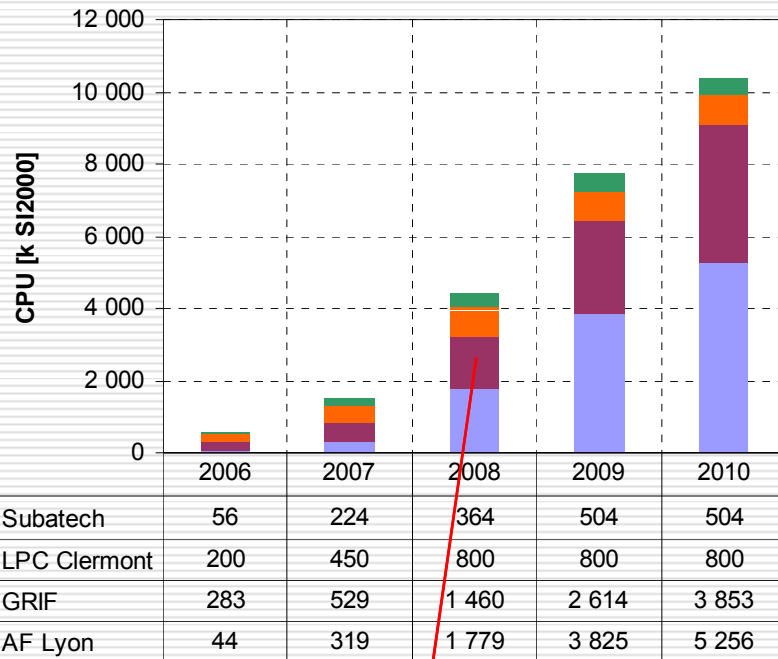


Disk (2008)

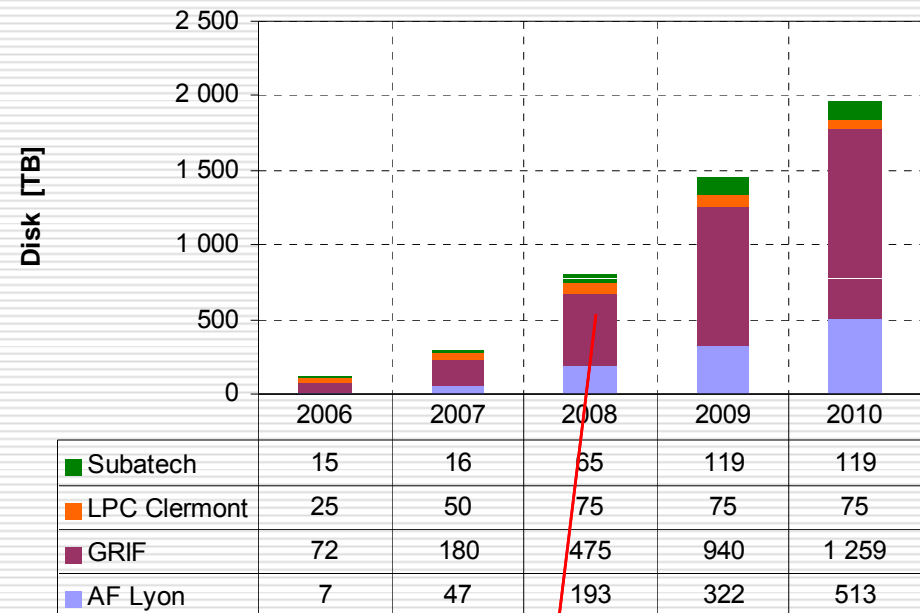


1000 kSI2000  $\approx$   
320 CPUs (AMD  
Opteron 275  
dual-core)

# Tier-2s Planned Contribution (cont.)

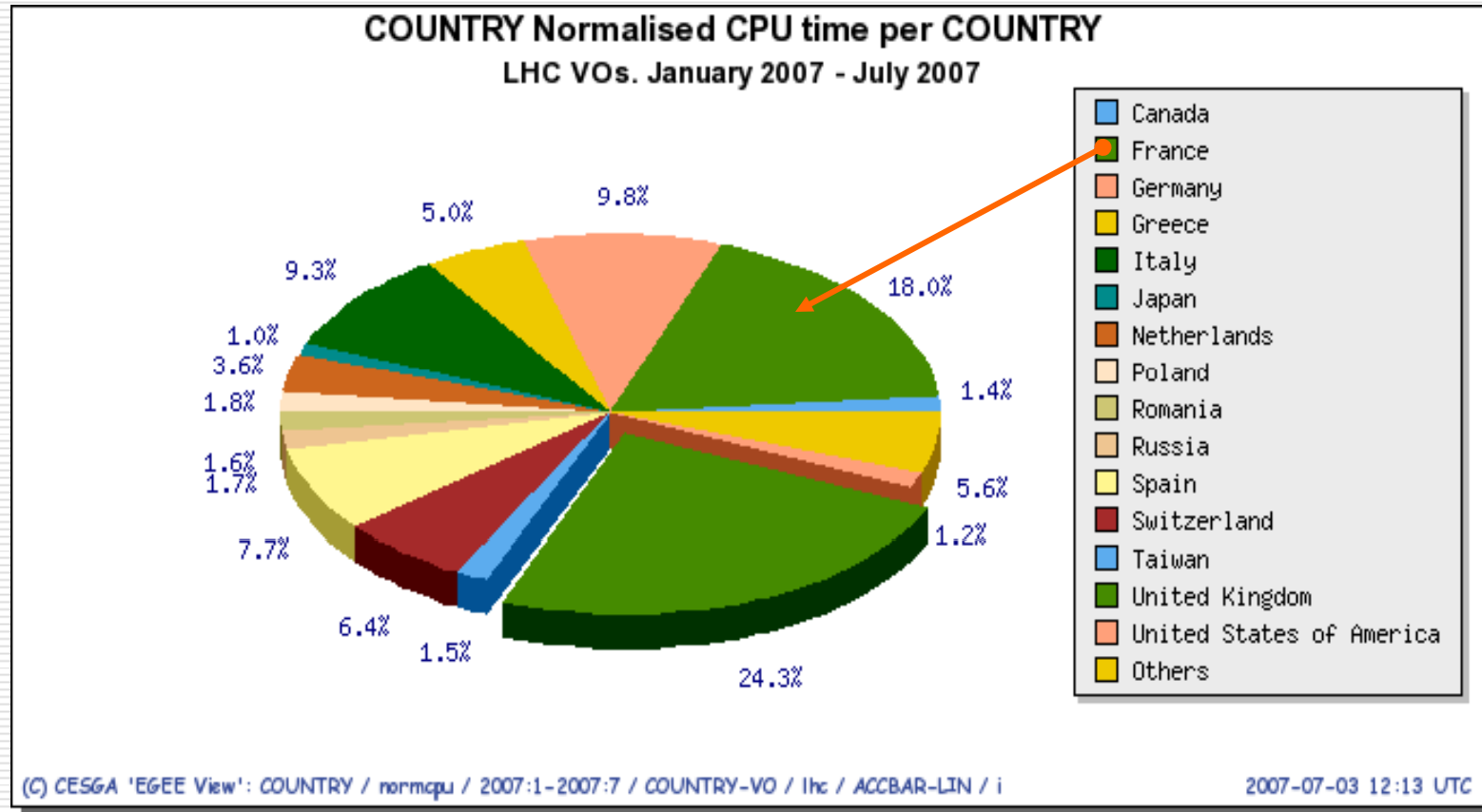


Roughly equivalent to the planned tier-1 CPU capacity the same year



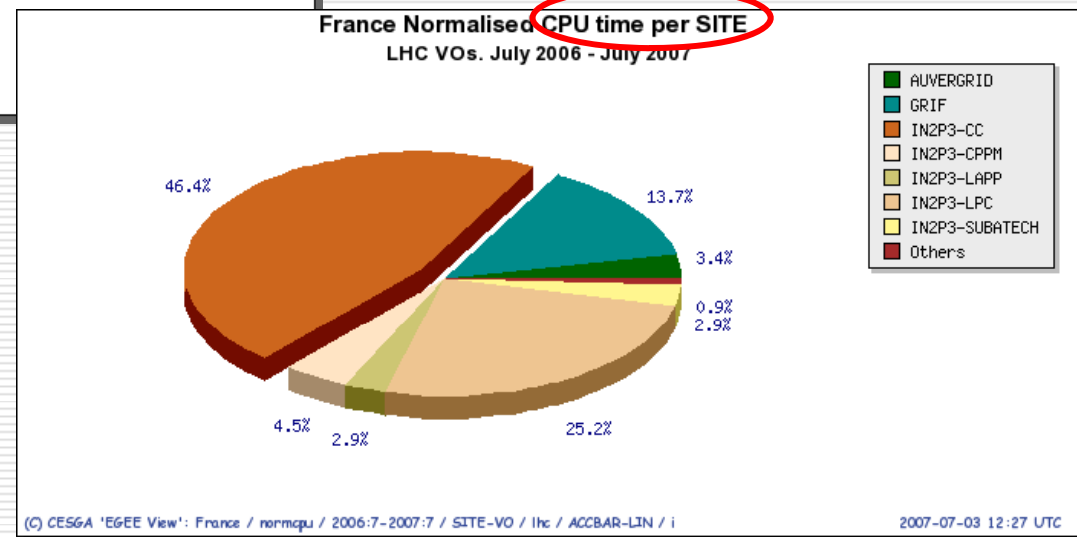
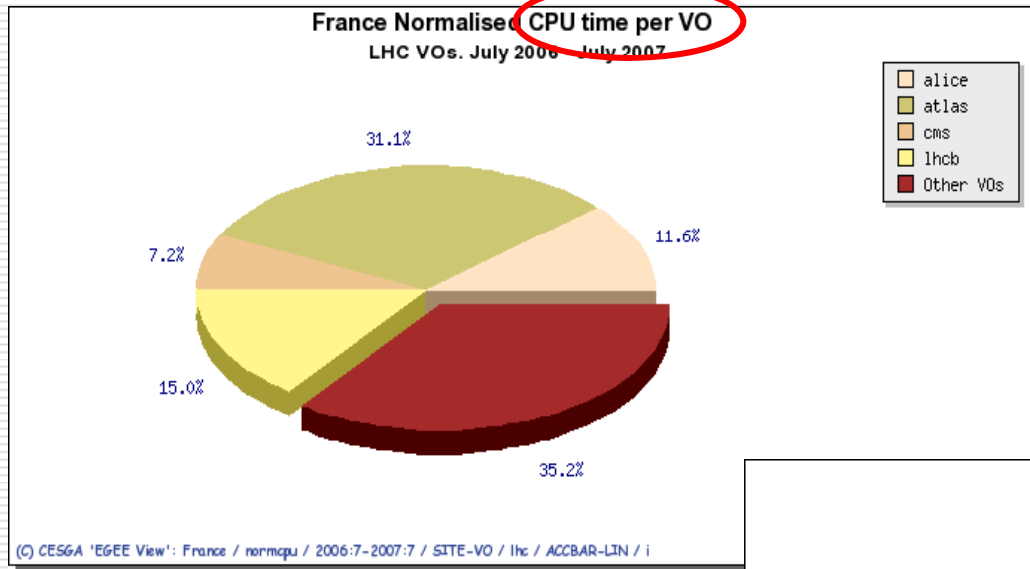
33% of the planned tier-1 disk capacity the same year

# Actual contribution



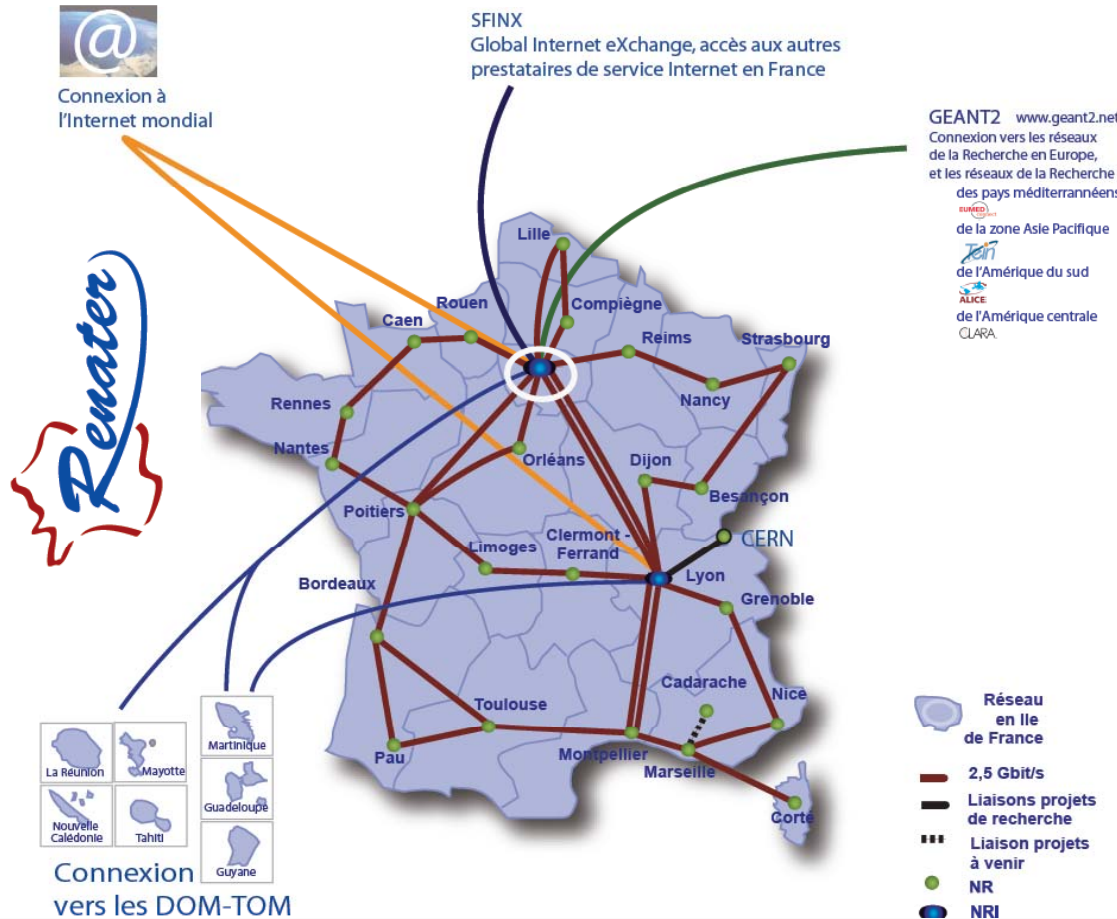
Source: [http://www3.egee.cesga.es/gridsite/accounting/CESGA/egee\\_view.html](http://www3.egee.cesga.es/gridsite/accounting/CESGA/egee_view.html)

# Actual contribution (cont.)



Source: [http://www3.egee.cesga.es/gridsite/accounting/CESGA/egee\\_view.html](http://www3.egee.cesga.es/gridsite/accounting/CESGA/egee_view.html)

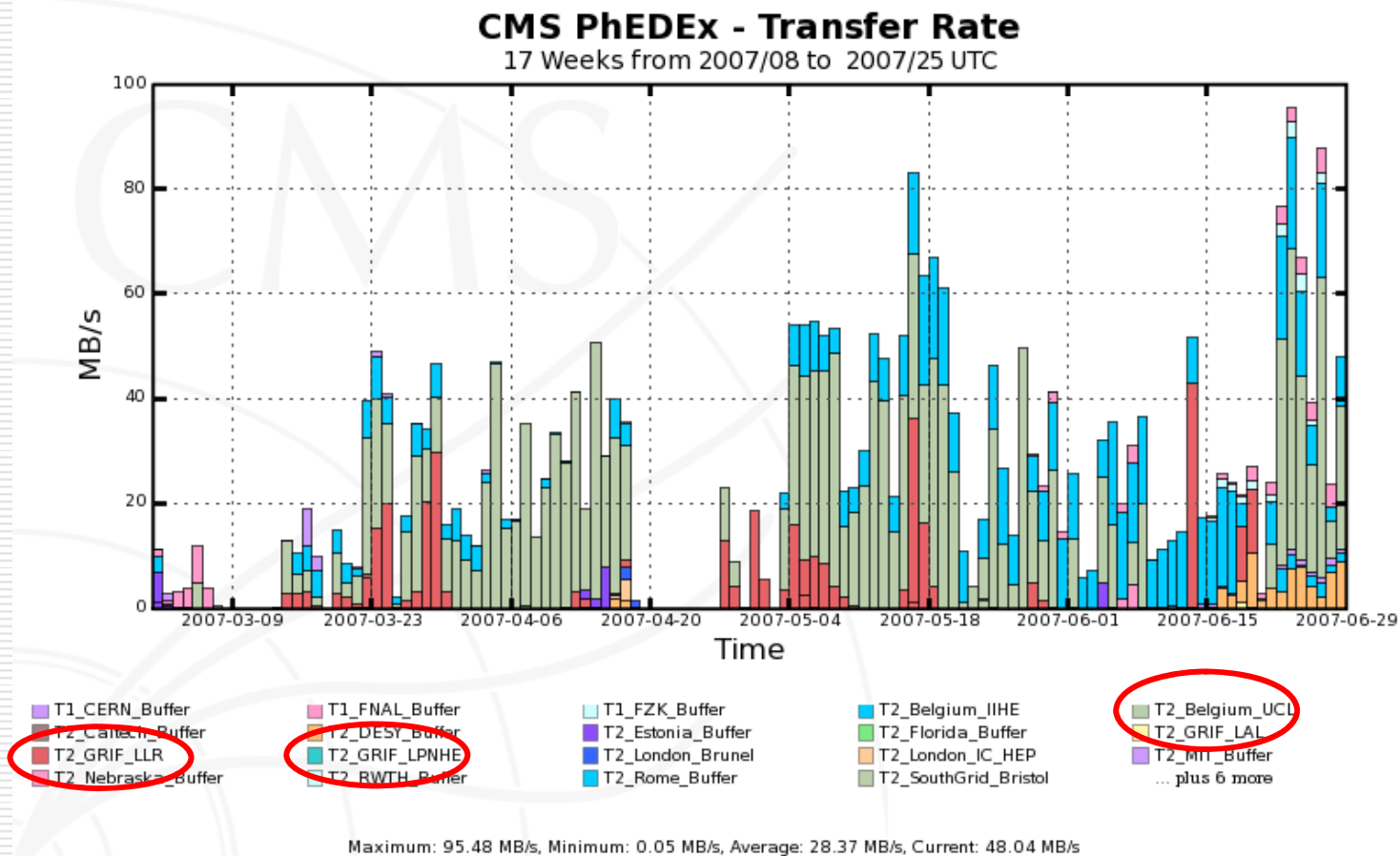
# Networking infrastructure



- Each tier-2 connected to RENATER backbone at 1 Gbps
- Separate circuit for connecting tier-1 and foreign sites (through GEANT) at 10 Gbps
  - In operation since June 20th

# Data transfers: CMS

- Data exchange
  - CC-IN2P3 → other CMS sites



Source: [Phedex](#)



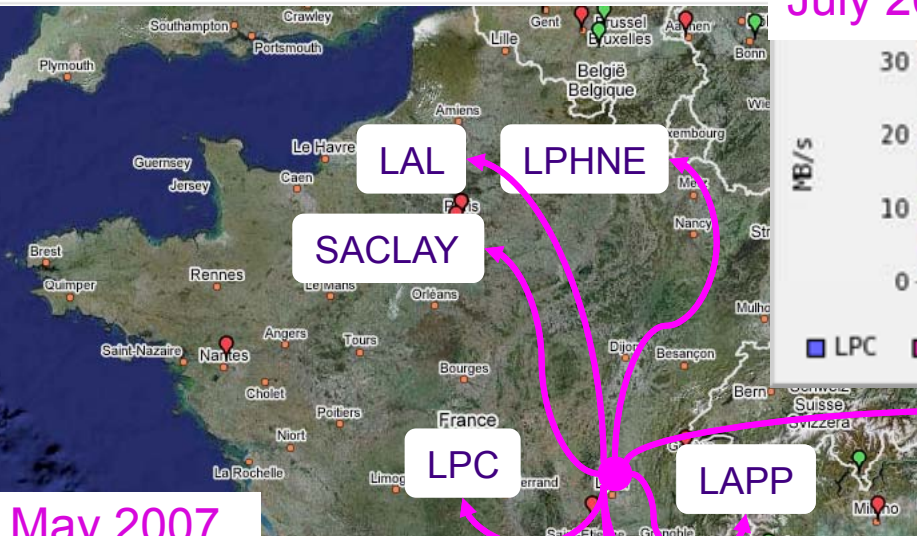
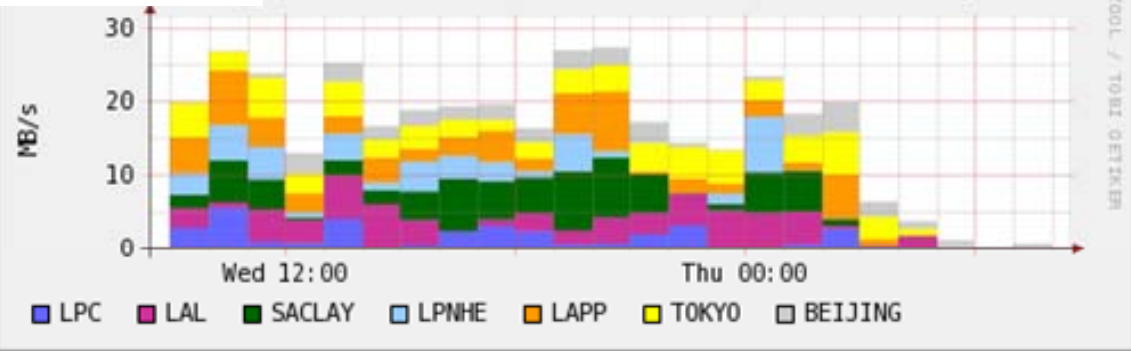


# Data transfers: Atlas

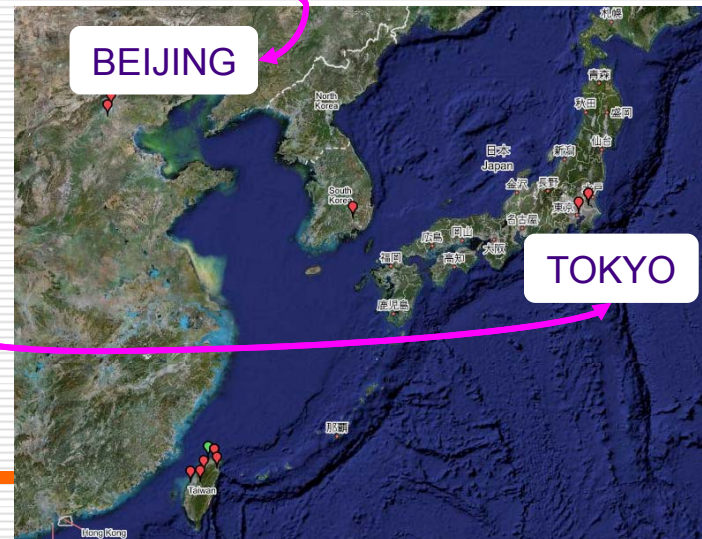
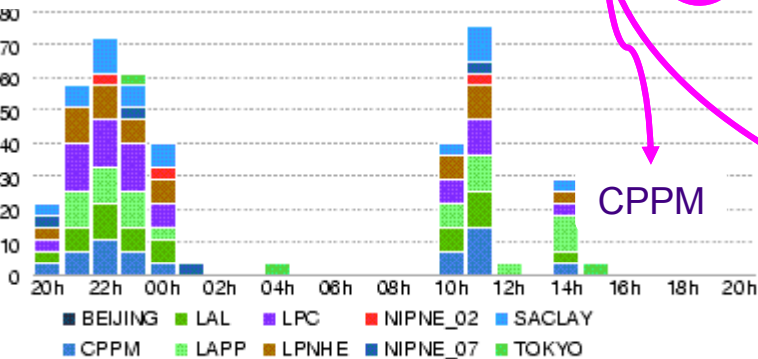
- Data Transfer exercise from T1 to T2-T3

July 2006

Input into LYON T2 sites in the last day



May 2007



# Coordinated activities

- Procurement
  - Meetings with potential hardware vendors for introducing the project, identifying representatives and getting similar commercial conditions for all sites
  - Sharing of technical (i.e. results of hardware evaluation) and commercial information between sites
  - Sharing of technical documents used for call for tenders
- Site management
  - Automated installation
    - ♦ Michel Jouvin (GRIF) leads the Quattor Working Group (<https://trac.lal.in2p3.fr/LCGQWG>)
    - ♦ Quattor is used by most of the LCG-France sites
  - Needs for grid services on SL4 for some sites sites (other than WN/UI)
    - ♦ DPM disk server : x86\_64 non official version
  - Management of clusters with Torque/Maui
    - ♦ Sharing technical information on how to configure Torque/Maui in the context of each particular site
  - Information exchange on DPM-based storage elements

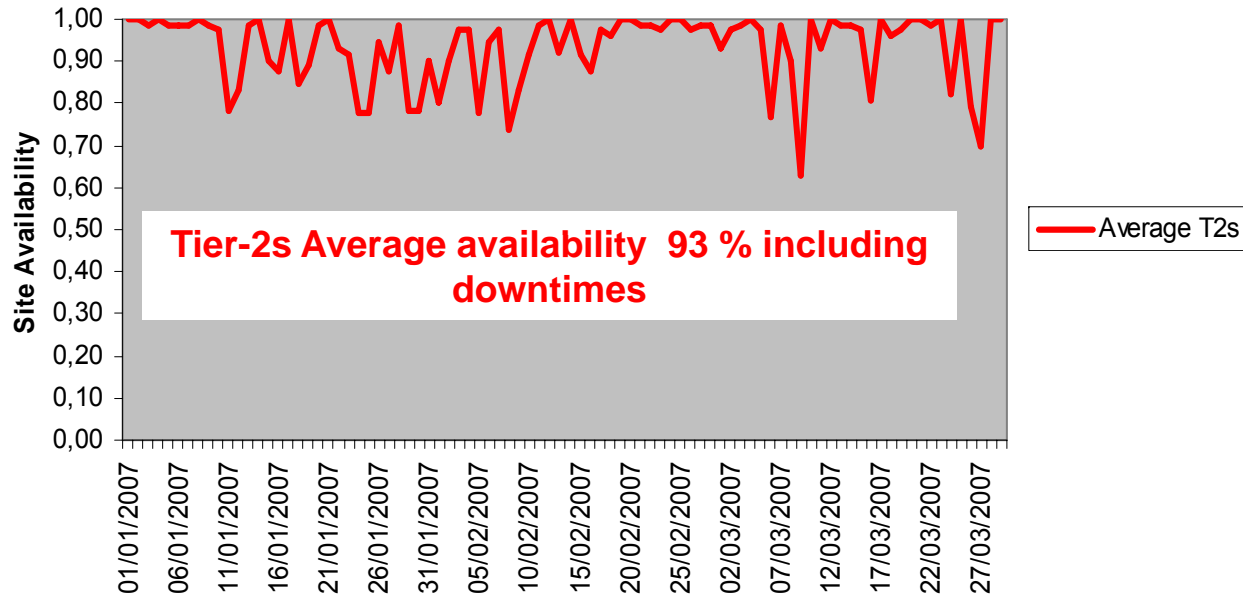


# Coordinated activities (cont.)

- Monitoring tier-2 availability (quarterly)
  - Target availability: 95%

2007 Q1 : January - March

T2s : Site Availability for OPS VO including downtimes



SAM -- 2006/11/28 - 08:47:37 - Mozilla Firefox

https://lcg-sam.cern.ch:8443/sam/sam.py?sensors=C

	NodeName	Status	atlas	
			ca	swdir
CG2	<a href="http://ce1.egee.fr.cgg.com">ce1.egee.fr.cgg.com</a>	OK	<a href="#">ok</a>	<a href="#">ok</a>
	<a href="http://grid10.lal.in2p3.fr">grid10.lal.in2p3.fr</a>	OK	<a href="#">ok</a>	<a href="#">ok</a>
	<a href="http://lpnce.in2p3.fr">lpnce.in2p3.fr</a>	OK	<a href="#">ok</a>	<a href="#">ok</a>
	<a href="http://node07.datagrid.cea.fr">node07.datagrid.cea.fr</a>	OK	<a href="#">ok</a>	<a href="#">ok</a>
	<a href="http://polgrid1.in2p3.fr">polgrid1.in2p3.fr</a>	OK	<a href="#">ok</a>	<a href="#">ok</a>
PC	<a href="http://cclcgceli02.in2p3.fr">cclcgceli02.in2p3.fr</a>	OK	<a href="#">ok</a>	<a href="#">ok</a>
PPM	<a href="http://marseillece01.mrs.grid.cnrs.fr">marseillece01.mrs.grid.cnrs.fr</a>	OK	<a href="#">ok</a>	<a href="#">ok</a>
APP	<a href="http://lapp-ce01.in2p3.fr">lapp-ce01.in2p3.fr</a>	OK	<a href="#">ok</a>	<a href="#">ok</a>
PC	<a href="http://clrcgce01.in2p3.fr">clrcgce01.in2p3.fr</a>	OK	<a href="#">ok</a>	<a href="#">ok</a>
PC	<a href="http://clrcgce02.in2p3.fr">clrcgce02.in2p3.fr</a>	OK	<a href="#">ok</a>	<a href="#">ok</a>
PC	<a href="http://clrcgce03.in2p3.fr">clrcgce03.in2p3.fr</a>	OK	<a href="#">ok</a>	<a href="#">ok</a>

lcg-sam.cern.ch:8443

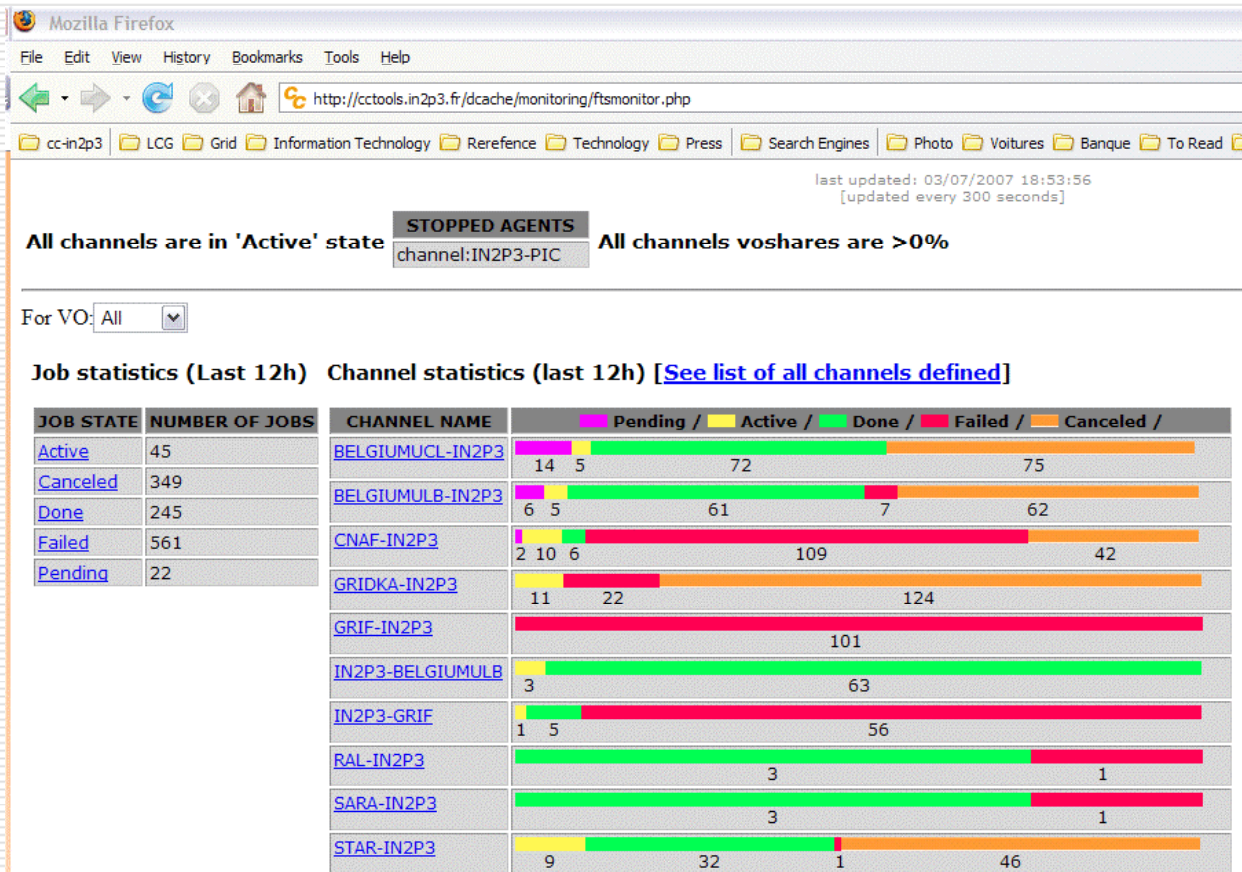
Source: : <https://lcg-sam.cern.ch:8443/sam/sam.py>

# Coordinated activities (cont.)

- Deployment of several regional top-level BDIIs
  - CC-IN2P3, GRIF, LAPP
  - With appropriate indexes for performance
  - Failover mechanism has been exercised during site downtimes
- Data transfer
  - Several campaigns of site-driven data exchange tests between tier-1 and tier-2s, both domestic and foreign
    - ♦ both at the network-level and at the application-level
  - Using filetransfer.py tool from GRIDPP
- Accounting
  - Ongoing work to systematically verify that local site accounting agrees with what is sent and stored in the APEL repository
  - Observed problems filling gaps with APEL publisher

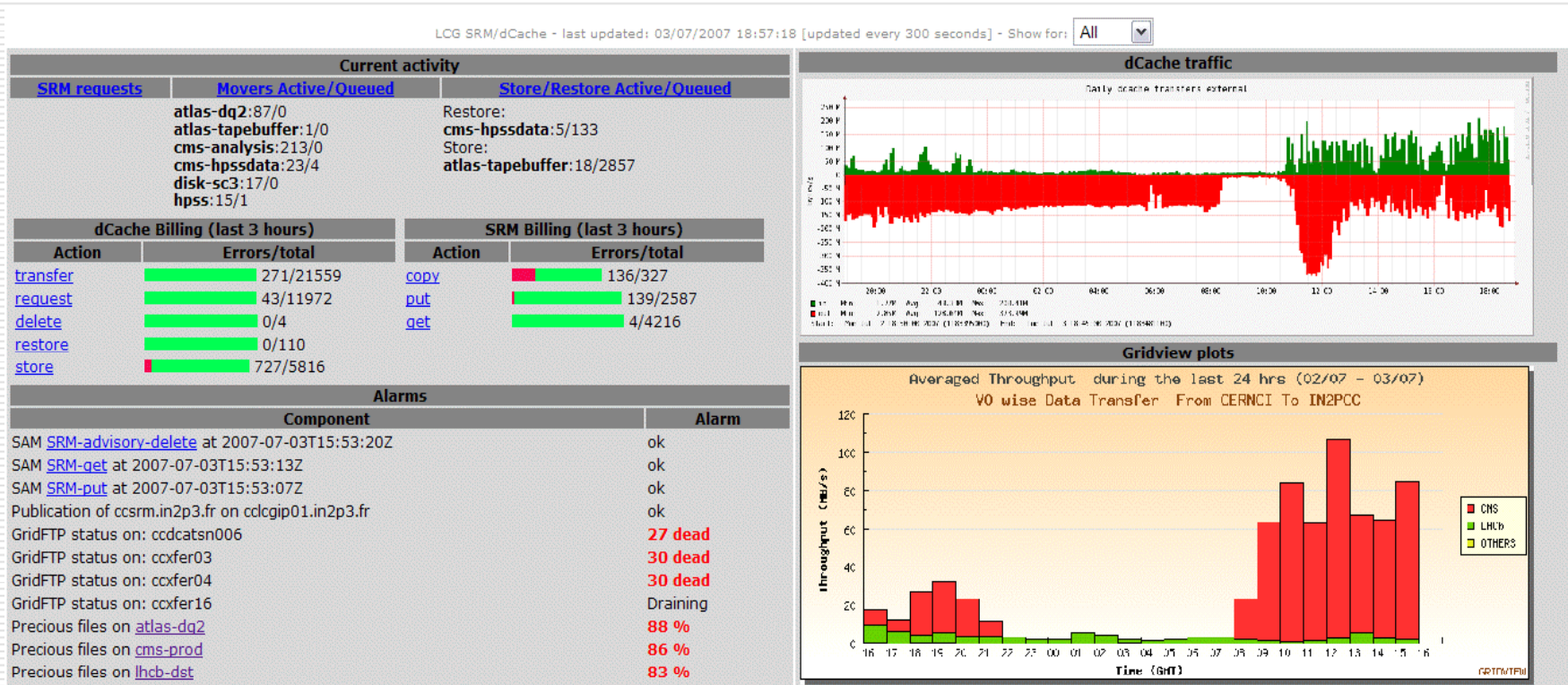
# Coordinated activities (cont.)

- Development of tools for monitoring data transfer activities
  - FTS: <http://cctools.in2p3.fr/dcache/monitoring/ftsmonitor.php>



# Coordinated activities (cont.)

- Development of tools for monitoring data transfer activities
  - dCache portal: <https://cctools.in2p3.fr/dcache/monitoring/lcg/portal.php>



[dCache service](#) - [dCap/Xrootd connections](#) - [Plots](#) - [pqFouine reports](#) - [Park](#) - [pNFS tree](#) - [Accounting](#)

# Current and future work

- Consolidate the accounting of resources
  - CPU: implement the proposed normalization based on SpecInt 2000 benchmark on all the sites of the region
  - Storage: make sure that what is accounted is what is actually provided
- Finalize the deployment of the tier-2 at CC-IN2P3
  - Understand what it takes to support a tier-1 and a tier-2 sites sharing the same infrastructure
- Follow the activities of the grid security, system management and grid service monitoring working groups



- LCG-France conferences
  - <http://indico.in2p3.fr/conferenceDisplay.py?confId=148>
  - <http://indico.in2p3.fr/conferenceDisplay.py?confId=82>
- Atlas tier-1 (and associated tier-2s) tour
  - <http://indico.in2p3.fr/conferenceDisplay.py?confId=239>
- Training sessions for EGEE users and site administrators
  - Deployment issues, DPM, batch operations, etc.
  - <http://indico.in2p3.fr/conferenceDisplay.py?confId=190>
  - <http://indico.in2p3.fr/conferenceDisplay.py?confId=CCa0713>

# Press & media, public relations

- Organization of several visits to CERN for VIPs, funding agencies, press, hardware vendors, etc.
- CERN Courier, June 4, 2007
  - <http://cerncourier.com/main/article/47/5/15/1>
- International science grid this week, May 9, 2007
  - <http://www.isgtw.org/?pid=1000414>
- Annual booths for the « Fête de la Science » since 2005
- LCG News, Sep. 2006
  - <http://lcg.web.cern.ch/LCG/LCGnews/LCGSepOct06.pdf>
- Creation of LCG-related communication supports
  - Flyers, brochures, etc.
- Several articles both in the national and regional press

# Conclusions

- Operating the grid services in their current status is complex and requires (highly competent and motivated) people
  - the available manpower for operating the tier-2 & tier-3 sites is limited
- LCG-France sites are operational but ramp up plans are rather aggressive
- Project has created a community
  - Involved sites sharing a common goal
  - Technological and scientific impact on the sites
- Visibility of the french contribution to WLCG
  - Involvement of physicists working together with engineers is instrumental for the success of this project
- Still a long way ahead!



# Questions/Comments

