



hm hospitales

we are health

2021



hm hospitales

who we are

we are physicians

➤ HM Hospitales was born in 1989 by a group of doctors who, led by **Dr. Juan Abarca Campal** and **Dr. Carmen Cidón Tamargo**, founded the "Hospital de Madrid"

Today, more than 30 years later, we are the National Reference Hospital Group with more than 40 care centres, 5,000 workers and more than 4,000 physicians associated with a clear vision of a comprehensive health model:

Health Care Providers



Teaching



Research



basic pillars

- ⊕ Patient
- ⊕ People & Talent
- ⊕ Long Term
- ⊕ Technology
- ⊕ Complexity
- ⊕ Business Orientation

we are health

mission



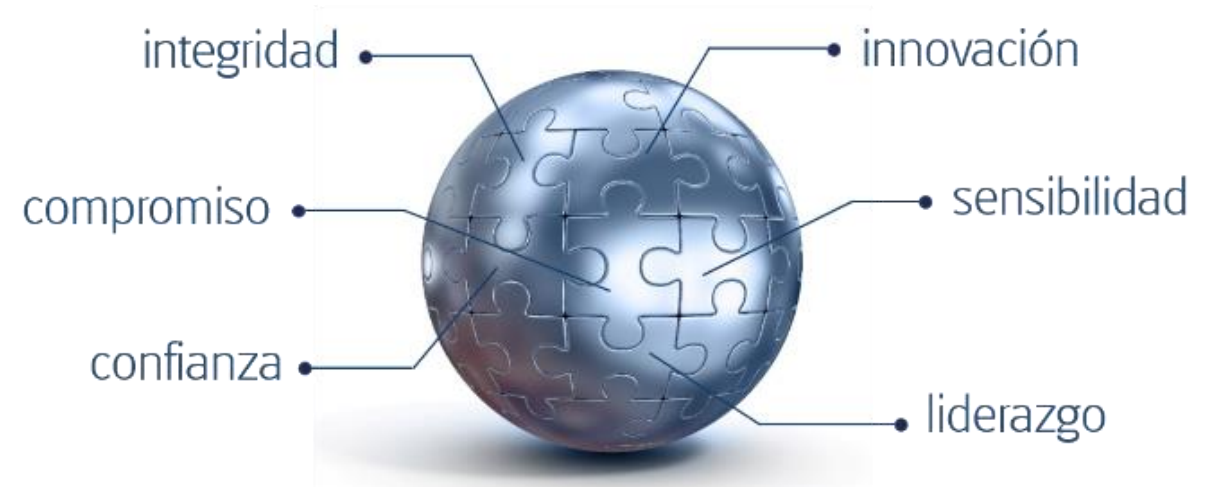
To provide health services for the **health and well-being** of our patients and their families, through a comprehensive health offer and an excellent quality of service, with the commitment to bring value to our customers, shareholders, employees and the whole of society

vision



To be national reference hospital group for health care, teaching and human-centered research

values



we are integration



we are hospitals

madrid

-  HOSPITAL UNIVERSITARIO
hm madrid
-  HOSPITAL UNIVERSITARIO
hm montepíncipe
-  HOSPITAL UNIVERSITARIO
hm torrelodones
-  HOSPITAL UNIVERSITARIO
hm sanchinarro
-  HOSPITAL UNIVERSITARIO
hm nuevo belén
-  HOSPITAL UNIVERSITARIO
hm puerta del sur
-  HOSPITAL
hm vallés
-  HOSPITAL
hm rivás





barcelona

-  HOSPITAL
hm delfos
-  HOSPITAL
hm sant jordi
-  HOSPITAL
hm nens

Integral centers

-  CENTRO INTEGRAL ONCOLÓGICO
hm CIOCC
-  CENTRO INTEGRAL DE ENFERMEDADES
CARDIOVASCULARES
hm CIEC
-  CENTRO INTEGRAL DE NEUROCIENCIAS
hm CINAC
-  MEDICINA DE LA REPRODUCCIÓN
hm fertility center

galicia

-  HOSPITAL
hm modelo
-  MATERNIDAD
hm belén
-  HOSPITAL
hm rosaleda
-  HOSPITAL
hm la esperanza

león

-  HOSPITAL
hm san francisco
-  HOSPITAL
hm regla

we are clinics

madrid



 POLICLÍNICO
hm arapiles

 CLÍNICA UNIVERSITARIA CEU
hm odontología

 POLICLÍNICO
hm suchil

 POLICLÍNICO
hm las tablas

 POLICLÍNICO
hm santander

 POLICLÍNICO
hm virgen del val

 POLICLÍNICO
hm gabinete velázquez

 POLICLÍNICO
hm telefónica

 POLICLÍNICO
hm torrelodones

 POLICLÍNICO
hm cruz verde

 POLICLÍNICO
hm la paloma

 POLICLÍNICO
hm moraleja

 POLICLÍNICO
hm sanchinarro

 POLICLÍNICO
hm getafe

barcelona



 POLICÍNICO
hm sant andreu

 POLICÍNICO
hm collblanc

 POLICLÍNICO
hm viladecans

toledo



 POLICLÍNICO
hm IMI toledo

galicia



 POLICLÍNICO
hm rosaeda lalín

 POLICLÍNICO
hm matogrande

 POLICLÍNICO
hm belén

león



 POLICLÍNICO
hm san francisco

we are data science

Digital transformation

➤ All HM Hospitals share the same IT platform

Data Science Department

Open data sets: COVID DATA SAVE LIVES- First open data set containing EHR of over 3000 COVID-19 hospitalized patients



**Massachusetts
Institute of
Technology**



COVID DATA SAVE LIVES *Initiative*

✉ coviddatasavelives@hmhospitales.com

we are teaching

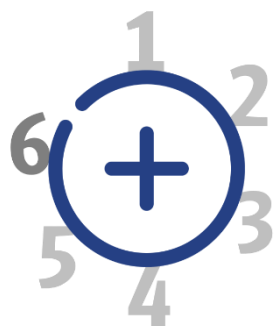
teaching

➤ HM Hospitales understands Teaching as a strategic area to support its healthcare activity, collaborating with multiple Universities and Institutes, among which the Universidad San Pablo CEU and Universidad Politecnica in Madrid, and the University of A Coruña

students in HM Hospitales

➤

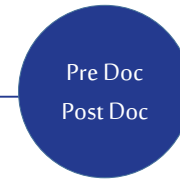
Alumnos	2015/16	2016/17	2017/18	2018/19	2019/20	2020/2021
Medicina	810	900	917	925	965	1001
Odontología	505	500	510	525	514	566
Fisioterapia	64	65	248	277	288	307
Enfermería	163	126	168	183	223	279
Psicología	40	40	164	152	175	200
Formación HM	395	485	580	660	680	760
Postgrado	135	251	290	332	450	481
TOTAL	2.112	2.367	2.877	3.054	3.295	3.594



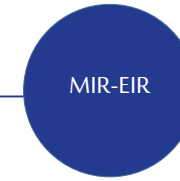
University Accreditation in collaboration with CEU San Pablo University



The HM Institute of Biosanitary Professionals HM Training, teaches 7 degrees of middle and higher degrees



Programs for Fellows, own titles, Official Masters, Expert Courses, Superspecialization Programs as International References



HM Hospitals is accredited for specialized medical training, MIR and also in 2020 the first place for EIR nursing is achieved in HM Nens

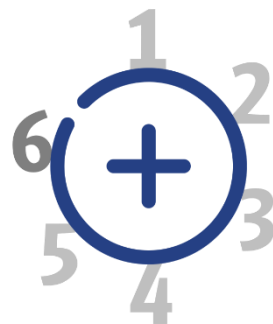
we are exploration

R&D

- ⊕ to lead health research within the framework of translational research
- ⊕ To encourage Research as a pillar of clinical and academic development for all healthworkers of HM Hospitales
- ⊕ Ultimately, to contribute to the health education of patients and society at large



- The **HM Hospitales Health Research Institute, IIS-HM**, aims to deepen the area of knowledge of massive analysis of biomedical data through technology applied to health by ensuring equal opportunities for individuals and populations, not to mention research in systems biology applied to health protection



- HM Hospitales has sponsored since 2003 a non-profit organization, the **HM Hospitales Research Foundation**, to which it has ceded all the research areas capable of generating resources on its own and with which it actively collaborates in the development of its own strategic plan

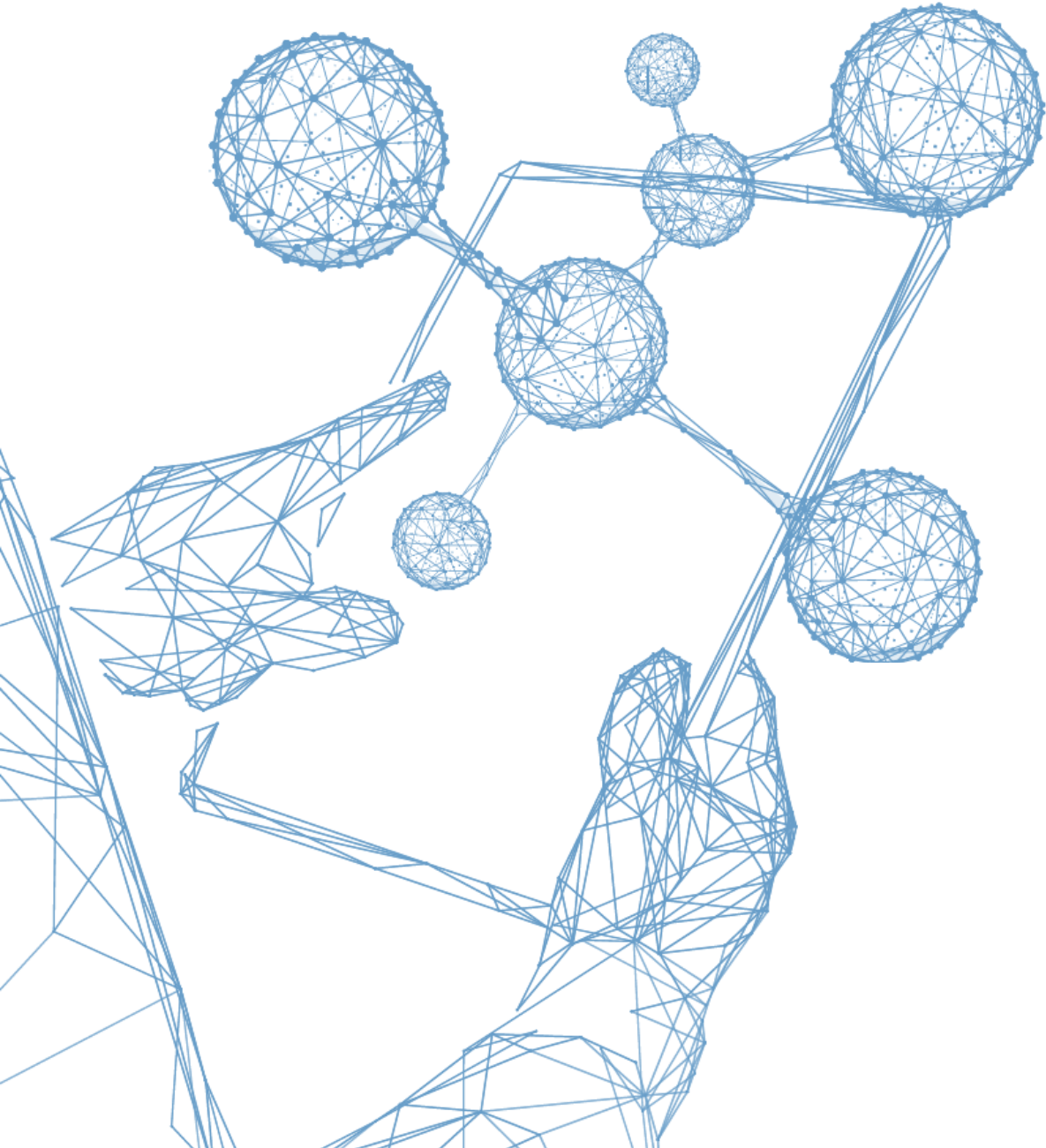


- The **Clinical Efficiency Validation Institute** is the platform for evaluating innovative health technologies. Develops studies to assess the cost and clinical effectiveness of new technologies, with the aim of facilitating strategic decision-making on the different sectors that shape healthcare

Más de 50 Instituciones colaboran con proyectos de investigación

HM Hospitales en





Fundación de
Investigación
HM Hospitales

we are research

Health care hand by hand with translational research

➤ **HM Hospitales Research Foundation** organizes scientific outreach activities and annually convenes a program of scholarships of studies in Health Sciences, scholarships for biosanitary specialization and the promotion of doctoral theses. In addition, HM Hospitals understands Research as a strategic area of support to its healthcare activity, collaborating with multiple pharmaceutical laboratories, universities and institutions



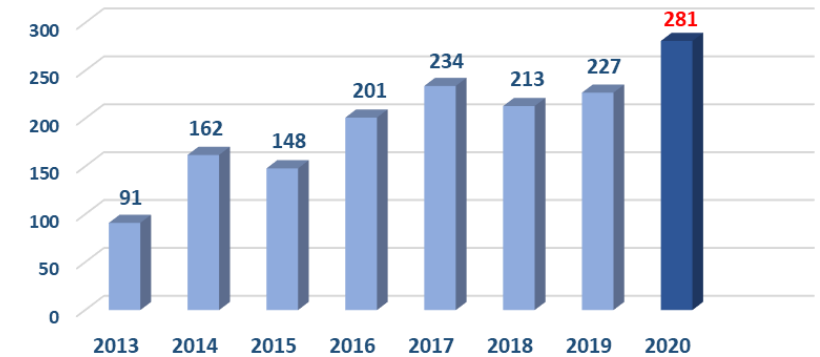
Scholarships

-
- ⊕ KLOCKNER de implantología Oral
 - ⊕ ORPEA en Geriátría Personalizada
 - ⊕ SIEMENS PET-RM
 - ⊕ HM HOSPITALES "Oto-acústica Evolutiva Y Paleontología"
 - ⊕ UCAM Cátedra Internacional de investigación en C.General y Digestivo.
 - ⊕ UCAM Cátedra Internacional de investigación en Oncología Molecular.
 - ⊕ UCAM Cátedra Internacional de investigación en Radioterapia.
 - ⊕ PROMEDE "Causalidad médico-legal"
 - ⊕ MEDIASET "Neurocinemática Aplicada"
 - ⊕ NOVO NORDISK En "Farmaco-economía de la Obesidad y Riesgo Cardiovascular"
 - ⊕ EQUIFAX "Inteligencia Artificial Aplicada al Sector Salud"

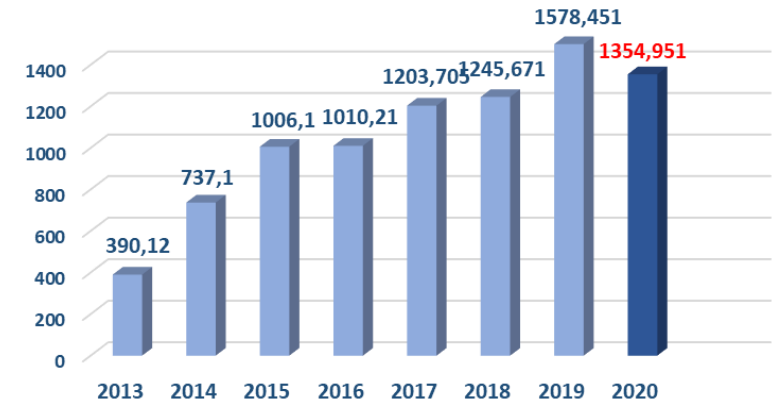
Academic activity

➤ Mean impact of 4,2 in 2020

NUMERO DE PUBLICACIONES



INDICE DE IMPACTO ACUMULADO



somos investigación

recursos investigación traslacional

- ⊕ Comisión Ejecutiva de I+D+i
- ⊕ CEIC
- ⊕ CEAS
- ⊕ Laboratorio de Dianas Terapéuticas
- ⊕ Banco de Muestras Biológicas
- ⊕ Unidad Central de Ensayos Clínicos
- ⊕ Unidad de Ensayos Clínicos Fases I en Oncología START Madrid- HM CIOCC
- ⊕ Unidad de Ensayos Clínicos Fases I en Voluntarios Sanos
- ⊕ Plataforma NSITE y red nacional de investigación clínica para pacientes pediátricos, RECLIP.



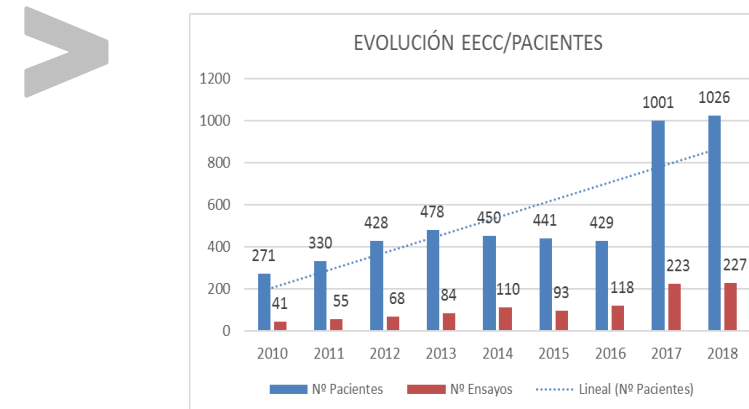
programas investigación traslacional

- ⊕ Programa de Oncología médica:
 - ⊕ Cirugía Oncológica
 - ⊕ Oncología Pediátrica
 - ⊕ Cáncer de mama
- ⊕ Programa de Cardiología
- ⊕ Programa de Neurociencias
- ⊕ Programa de Medicina Regenerativa
- ⊕ Programa de Pediatría
- ⊕ Programa de Odontología
- ⊕ Programa de Nanomedicina

ensayos

EECC ABIERTOS 2019	
Oncológicos FASE I	69
Oncológicos FASE II-IV	100
No oncológicos	66
Total	235

pacientes





hm hospitales



clinical activity



we are capacity

assistance capacity



HM Hospitales currently has some of the most recognized facilities in Spain and invests significantly in its centres to maintain its quality standards

2021	BEDS	ORs	Units	Policlínicos
HM Madrid	105	5	Medicina Interna y Traumatología	3
HM Montepíncipe + HM CIEC	184	11	Ginecología, Cardiología, Pediatría y Cirugía General	1
HM Torreldones	98	6	Ginecología y Traumatología	1
HM Sanchinarro + HM CIOCC	203	12	Traumatología, Cirugía General, Urología y Oncología	4
HM Nuevo Belén	60	5	Ginecología	1
HM Puerta del Sur + HM CINAC	153	11	Ginecología, Neurología, Psiquiatría, Pediatría y Cirugía General	2
HM Vallés	20	3	Oftalmología, Traumatología, Urología, Fertilidad	3
HM Modelo + Mat. HM Belén	140	11	Traumatología, Cardiología, Ginecología y Cirugía General	2
HM Rosaleda + HM La Esperanza/HM CIOCC	126	14	Oncología, Traumatología, Cirugía General	1
HM San Francisco	46	6	Obstetricia-Neonatología, C. Bariátrica, M. Nuclear, U del Sueño, Urología	1
HM Regla	75	2	Litotricia y Geriatría	0
HM Delfos (HM CIOCC-HM CINAC-HM CIEC)	160	11	Oncología, Cardiología y Neurología	3
HM Sant Jordi	25	2	Ginecología	0
HM Nens	26	4	Pediatría	0
TOTAL	1.421	103		22

we are volume



HM Hospitals Healthcare Activity Data for the
2020 financial year

2020	Madrid	Galicia*	León	Barcelona	TOTAL
HOSPITAL DISCHARGE	49.922	12.431	3.872	13.355	79.580
EMERGENCY VISITS	282.047	59.770	28.921	88.691	459.429
SURGERIES	23.202	7.677	2.247	11.430	44.556
OUTPATIENT SURGERIES	12.918	3.868	2.432	2.170	21.388
BIRTHS	4.670	981	105	42	5.798
LABORATORY ANALYSES	7.234.139	1.388.604	21.663	456.367	9.100.773
IMAGING STUDIES	499.577	139.567	64.344	116.828	820.316
ENDOSCOPIES	26.679	5.724	1.321	8.104	41.828
OUTPATIENTS	1.860.771	318.531	222.528	450.145	2.851.975

* Incluye HM Rosaleda- HM La Esperanza desde el 08/09/2020



hm hospitales

www.hmhospitales.com

