

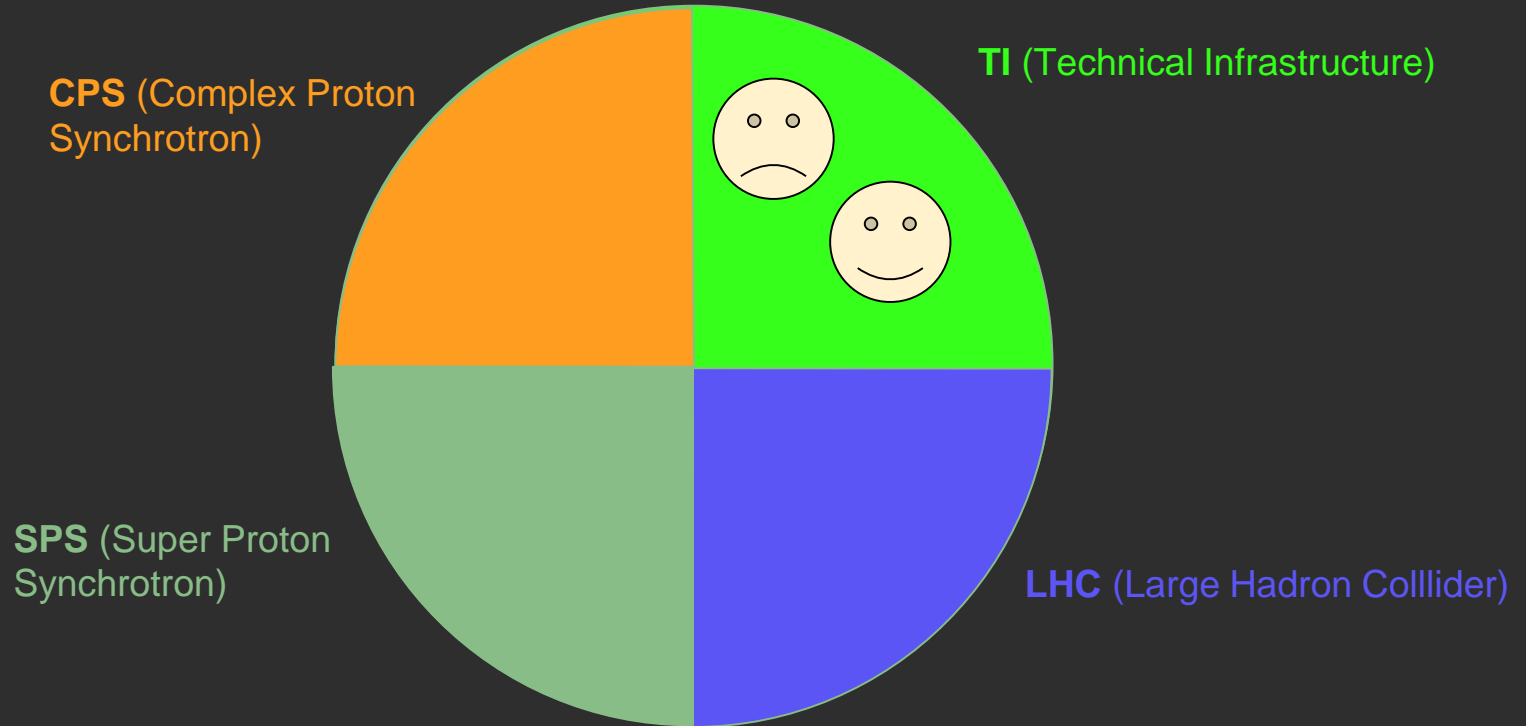
CCC

CERN Control Centre

Vores projekt

CERN technical infrastructure needs new monitoring for critical systems

Hvad laver CCC?



Lingo, Software, Kaffe og Croissant

- TIP (Technical Infrastructure Portal)

- Overviews



- Gratis kaffe, Croissant og Pain au Chocolat.



Første projekt: Copy, paste, copy, paste, copy, paste, copy, paste

Alarms CCC FSEG-3880

- DEFAULT MAJEUR STATION EAU GLACEE AWAKE
- DEFAULT MINEUR STATION EAU GLACEE AWAKE

Alarms CCC DISTRIBUTION SUITS

- DEFAULT MAJEUR DISTRIBUTION EAU GLACEE SUB
- DEFAULT MINEUR DISTRIBUTION EAU GLACEE SUB

Alarms CCC PRODUCTION EAU GLACEE

- DEFAULT MAJEUR PRODUCTION EAU GLACEE AWAKE
- DEFAULT MINEUR PRODUCTION EAU GLACEE AWAKE

Alarms CCC DISTRIBUTION TSG4

- DEFAULT MAJEUR DISTRIBUTION EAU GLACEE TSG4
- DEFAULT MINEUR DISTRIBUTION EAU GLACEE TSG4

Alarms CCC TEMPERATURE EAU GLACEE

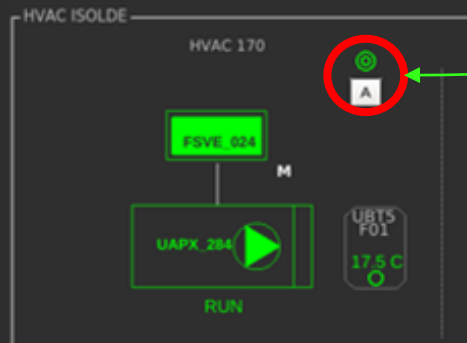
- DEFAULT TEMPERATURE EAU GLACEE AWAKE

objects_parampanels/CPC_OBJECTS/cpcSummaryAlarm.para.plt (CPC_OBJECTS_1) [X]

Please select devices with the filter button in enter area and press enter

- CV_LINAC4-RFQ_14_CIRCUIT1_FS1
- CV_LINAC4-RFQ_14_CIRCUIT1_FS2
- CV_LINAC4-RFQ_14_FILLINGS_AL2
- CV_LINAC4-RFQ_14_FT0005_FS
- CV_LINAC4-RFQ_14_FT0004_FS
- CV_LINAC4-RFQ_14_RF0004_FS1
- CV_LINAC4-RFQ_14_CIRCUIT1_AL

CV_LINAC4-RFQ_14_FT0005_AL2

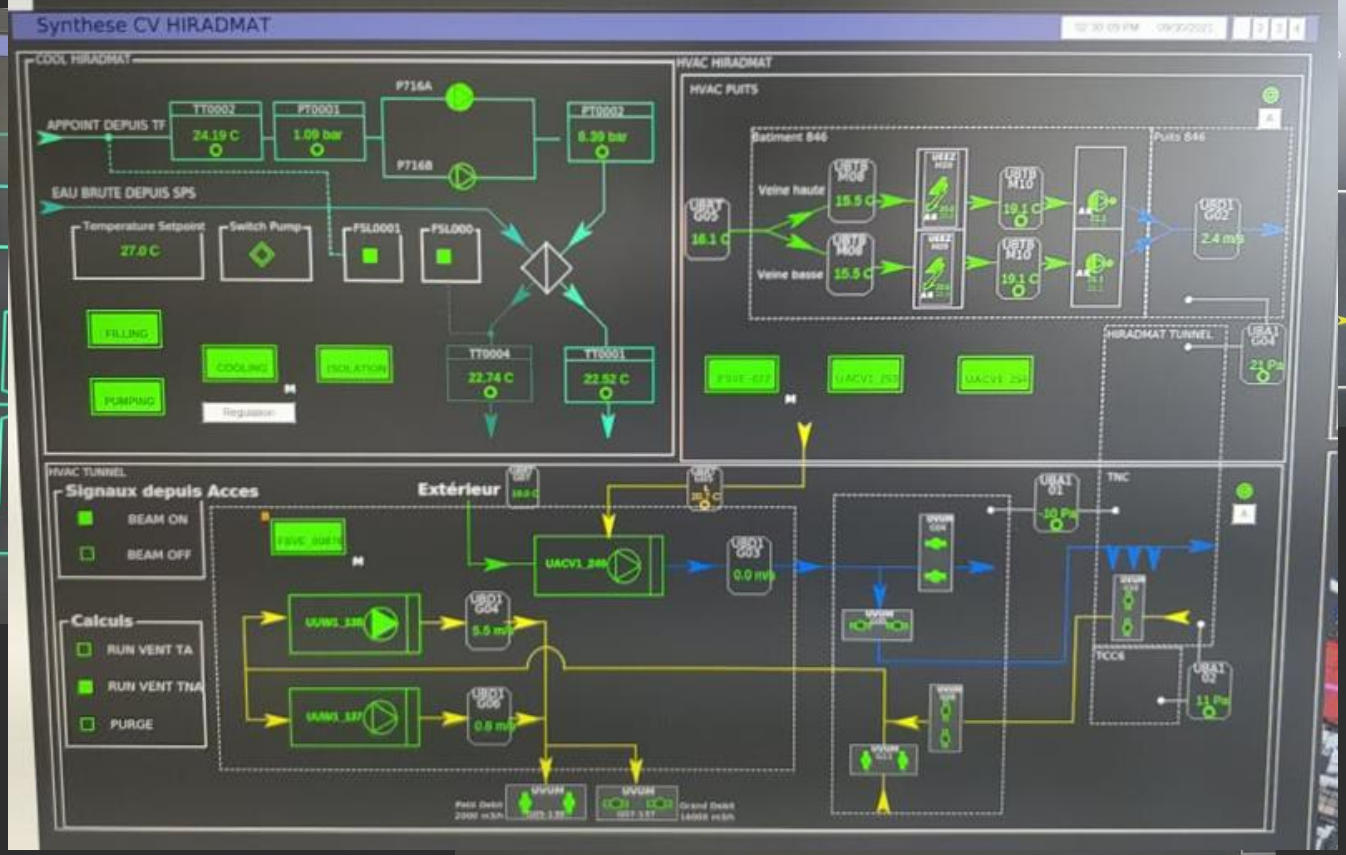
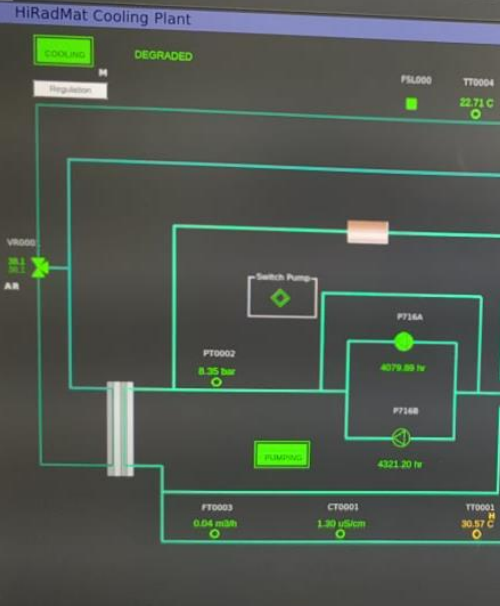


Andet projekt: HiRadMat

The screenshot displays the Siemens SIMATIC Manager software interface for a project titled "Synthese CV HIRADMAT". The main workspace shows a complex ladder logic diagram with various components and interconnections. The diagram is divided into several sections, including "PANNEL UNDER CONSTRUCTION", "APPOINT DEPUS SPS", "EAU BRUTE DEPUS SPS", "Signaux depus Acces", "Calculs", "Extérieur", "MACHIN", "MACHIN RUTS", and "HIRADMAT TUNNEL". The right-hand panel contains an "Application test selected" section with a list of alarms and their details.

Description	Alarm ID	Device	Location	Responsibility
No CCC alarm is selected				
Control: No CCC alarm is selected				
Alarm ID: No CCC alarm is selected				
Application: No CCC alarm is selected				
Device: No CCC alarm is selected				
Location: No CCC alarm is selected				
Responsibility: No CCC alarm is selected				

Andet projekt: HiRadMat



HiRadMat HVAC puits - OVERVIEW

9/28/18 PM

HIRADMAT puits 846

Batiment 846

UBAT 001 15.4 C

UBAT 002 19.1 C

UBAT 003 15.4 C

UBAT 004 19.1 C

UBAT 005 15.4 C

UBAT 006 19.1 C

UBAT 007 15.4 C

UBAT 008 19.1 C

UBAT 009 15.4 C

UBAT 010 19.1 C

UBAT 011 15.4 C

UBAT 012 19.1 C

UBAT 013 15.4 C

UBAT 014 19.1 C

UBAT 015 15.4 C

UBAT 016 19.1 C

UBAT 017 15.4 C

UBAT 018 19.1 C

UBAT 019 15.4 C

UBAT 020 19.1 C

UBAT 021 15.4 C

UBAT 022 19.1 C

UBAT 023 15.4 C

UBAT 024 19.1 C

UBAT 025 15.4 C

UBAT 026 19.1 C

UBAT 027 15.4 C

UBAT 028 19.1 C

UBAT 029 15.4 C

UBAT 030 19.1 C

UBAT 031 15.4 C

UBAT 032 19.1 C

UBAT 033 15.4 C

UBAT 034 19.1 C

UBAT 035 15.4 C

UBAT 036 19.1 C

UBAT 037 15.4 C

UBAT 038 19.1 C

UBAT 039 15.4 C

UBAT 040 19.1 C

UBAT 041 15.4 C

UBAT 042 19.1 C

UBAT 043 15.4 C

UBAT 044 19.1 C

UBAT 045 15.4 C

UBAT 046 19.1 C

UBAT 047 15.4 C

UBAT 048 19.1 C

UBAT 049 15.4 C

UBAT 050 19.1 C

UBAT 051 15.4 C

UBAT 052 19.1 C

UBAT 053 15.4 C

UBAT 054 19.1 C

UBAT 055 15.4 C

UBAT 056 19.1 C

UBAT 057 15.4 C

UBAT 058 19.1 C

UBAT 059 15.4 C

UBAT 060 19.1 C

UBAT 061 15.4 C

UBAT 062 19.1 C

UBAT 063 15.4 C

UBAT 064 19.1 C

UBAT 065 15.4 C

UBAT 066 19.1 C

UBAT 067 15.4 C

UBAT 068 19.1 C

UBAT 069 15.4 C

UBAT 070 19.1 C

UBAT 071 15.4 C

UBAT 072 19.1 C

UBAT 073 15.4 C

UBAT 074 19.1 C

UBAT 075 15.4 C

UBAT 076 19.1 C

UBAT 077 15.4 C

UBAT 078 19.1 C

UBAT 079 15.4 C

UBAT 080 19.1 C

UBAT 081 15.4 C

UBAT 082 19.1 C

UBAT 083 15.4 C

UBAT 084 19.1 C

UBAT 085 15.4 C

UBAT 086 19.1 C

UBAT 087 15.4 C

UBAT 088 19.1 C

UBAT 089 15.4 C

UBAT 090 19.1 C

UBAT 091 15.4 C

UBAT 092 19.1 C

UBAT 093 15.4 C

UBAT 094 19.1 C

UBAT 095 15.4 C

UBAT 096 19.1 C

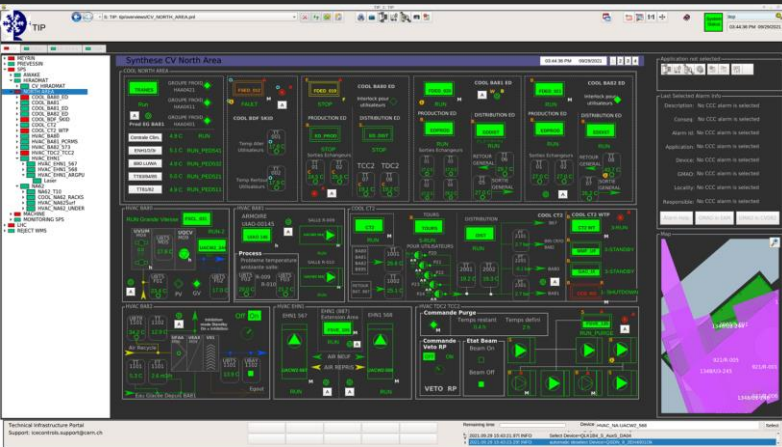
UBAT 097 15.4 C

UBAT 098 19.1 C

UBAT 099 15.4 C

UBAT 100 19.1 C

Tredje projekt: North Area; + det løse: Media Trends



Paneldesignere i deres naturlige omgivelser



