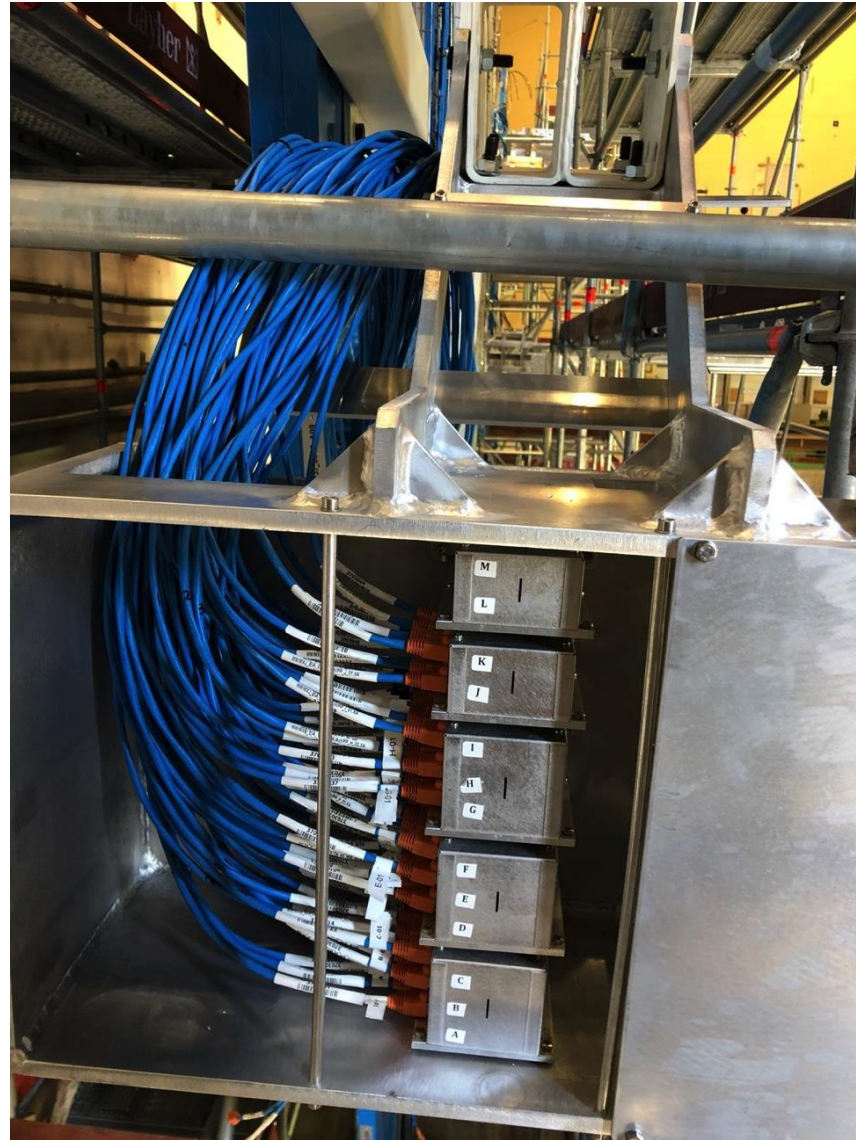


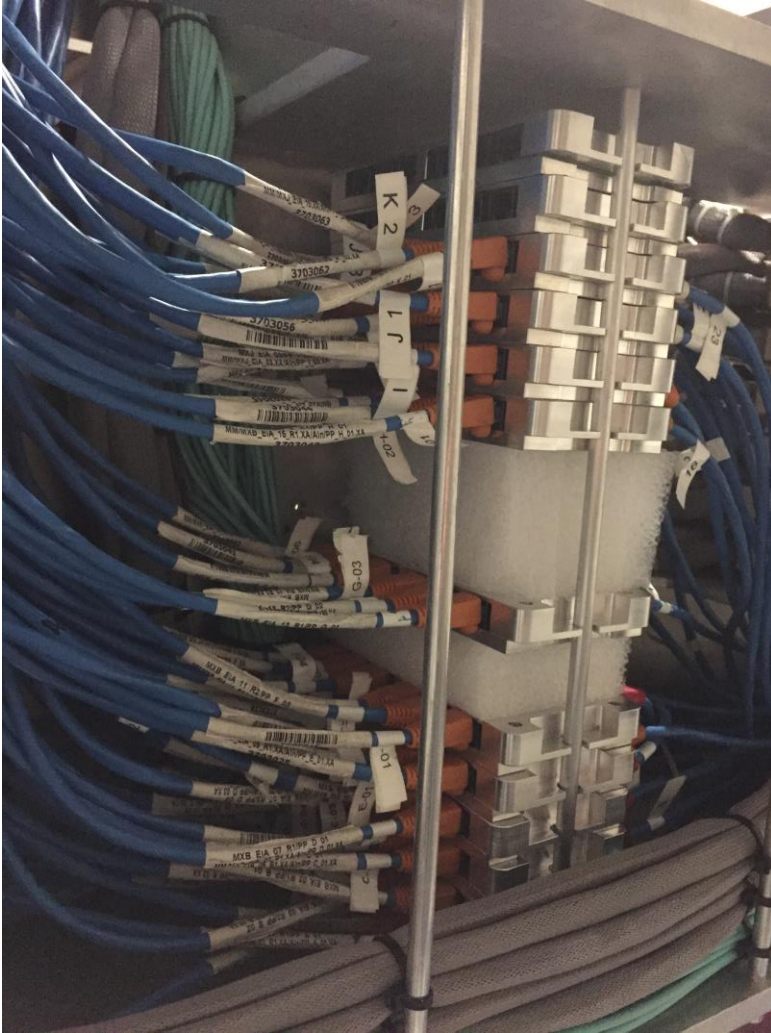
Update on activities

Repeaters old design

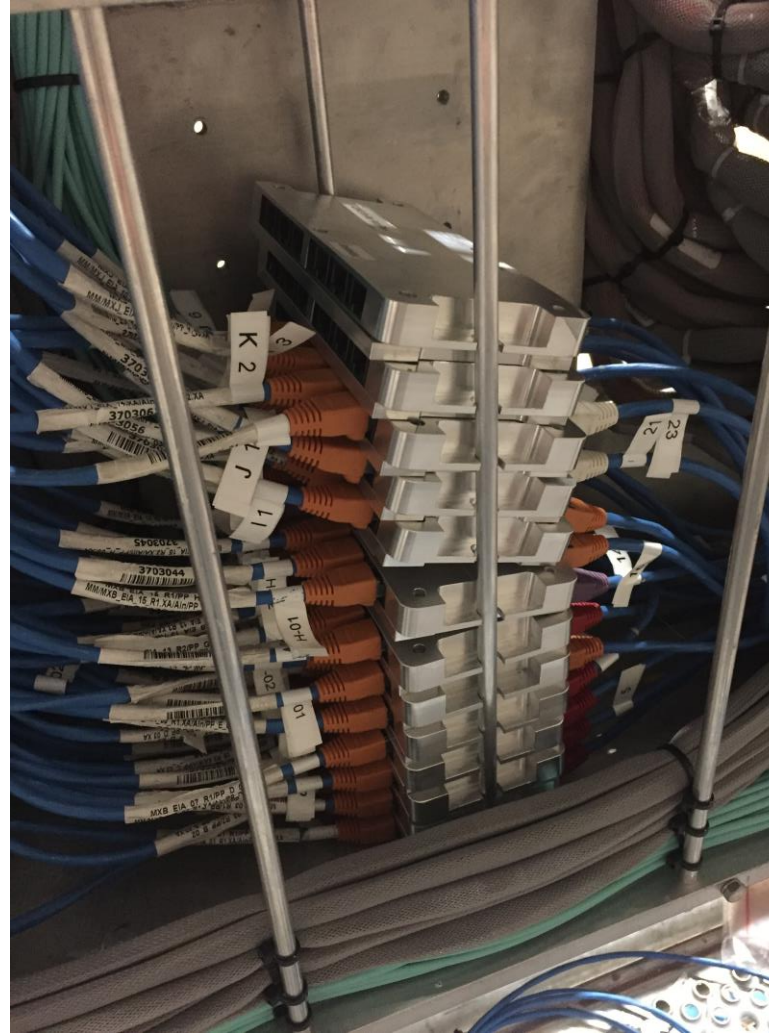


All other services (HV cables, sTGC fibers....) not shown.

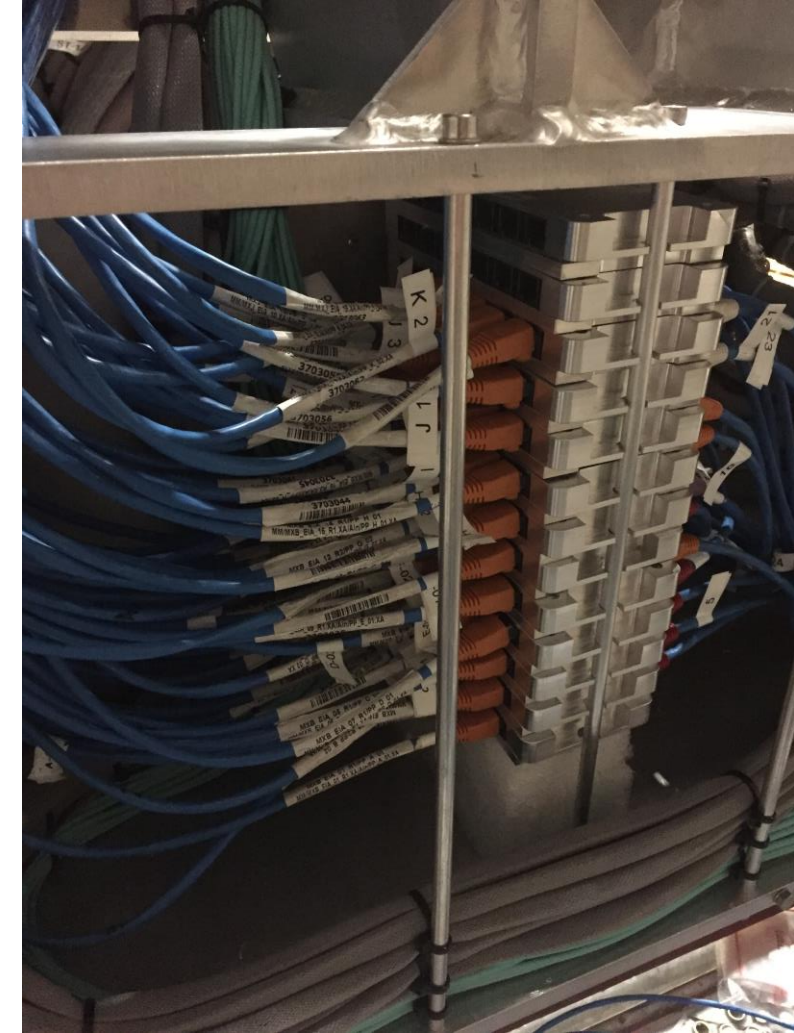
Repeaters new design. Wheel side A



Isolation of one repeater with two foam spacers .



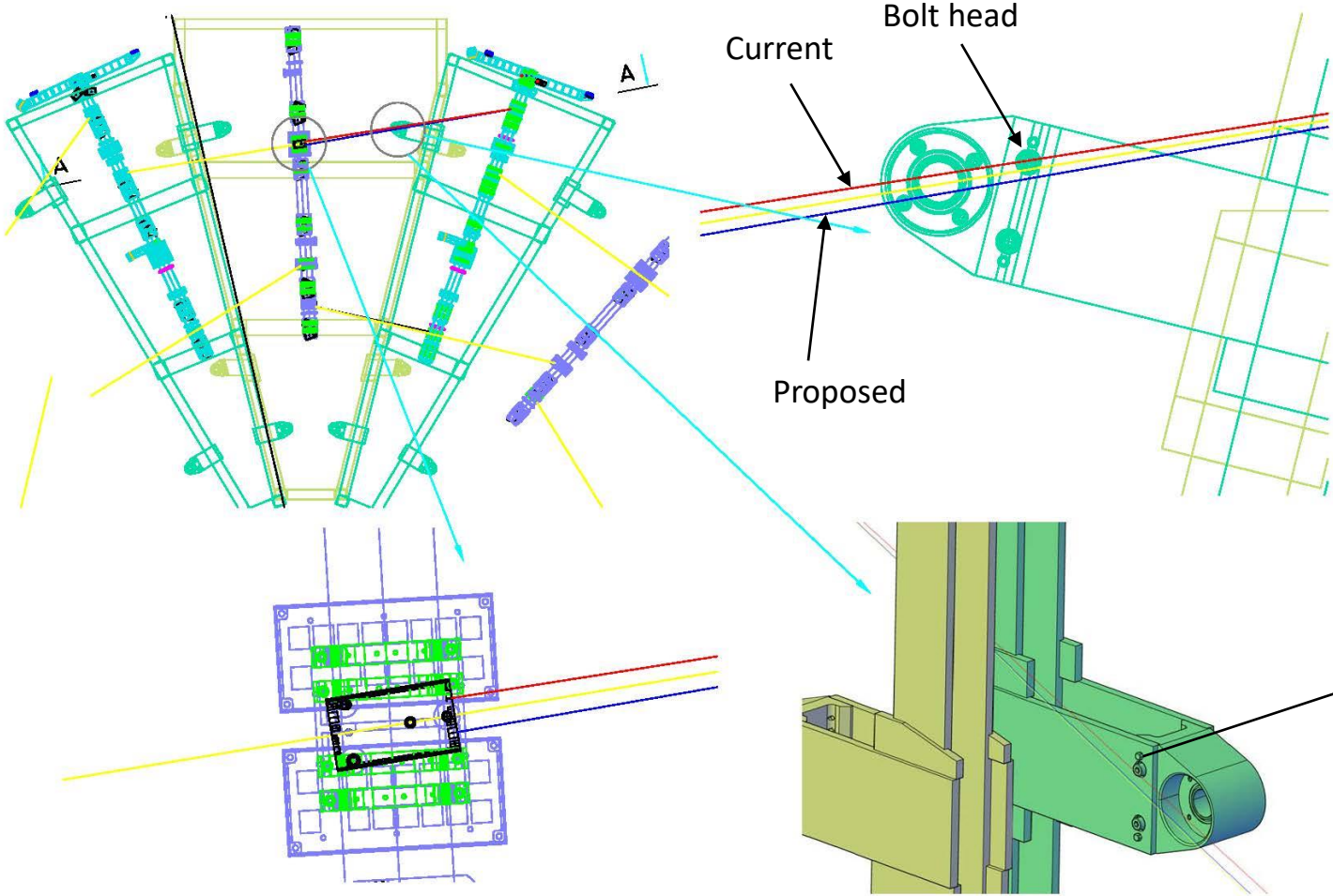
Cables a bit short for the upper four repeaters .



Run position of repeaters with both foam spacers at the bottom .

Exchange any repeater is easy so we might consider not having spare repeaters in the stack.

Potential problem with azimuthal line.

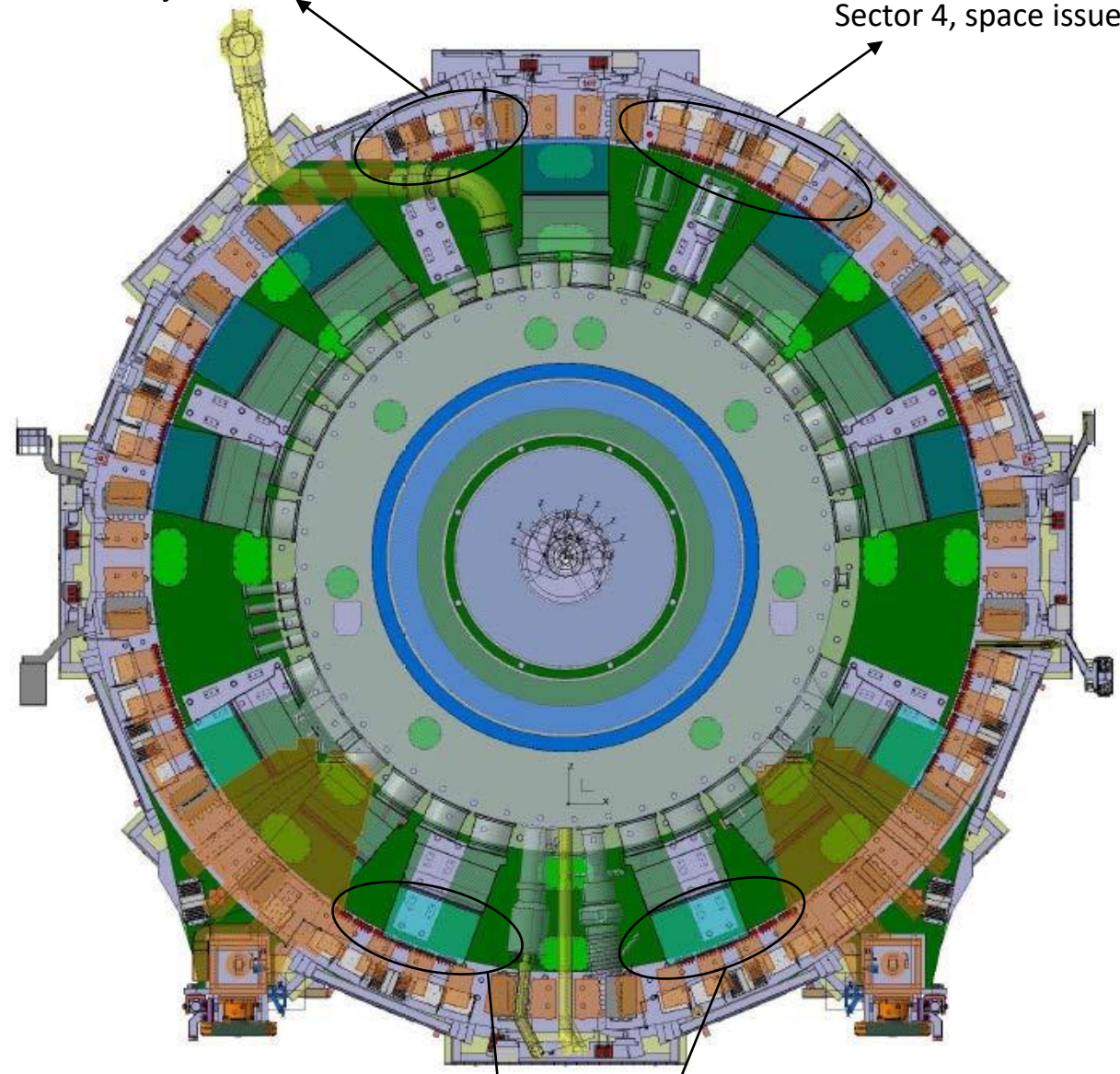


Small distance (about 3.5mm) from L-S azimuthal line to the bolt head. Replace D-BCAMs on all small bars with the different color ones.

External fibers routing issues.

Sector 6, missing two injectors

Sector 4, space issue

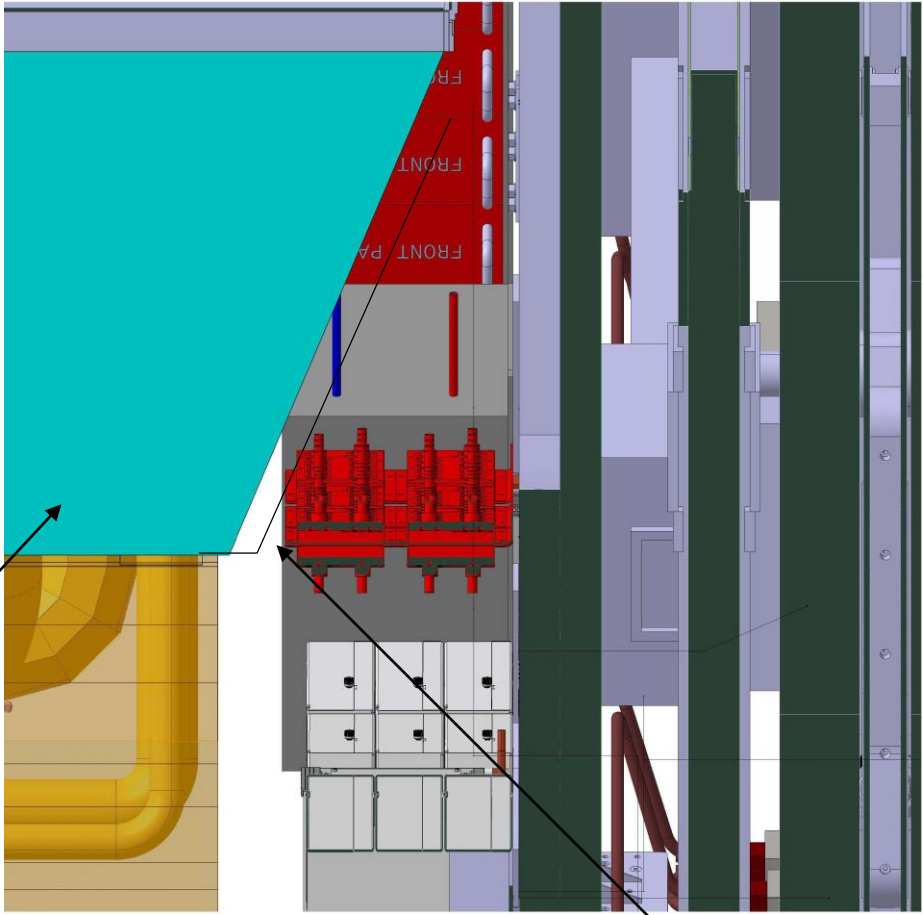


Sector 12 and 14, space issue

External fibers routing issues, continued



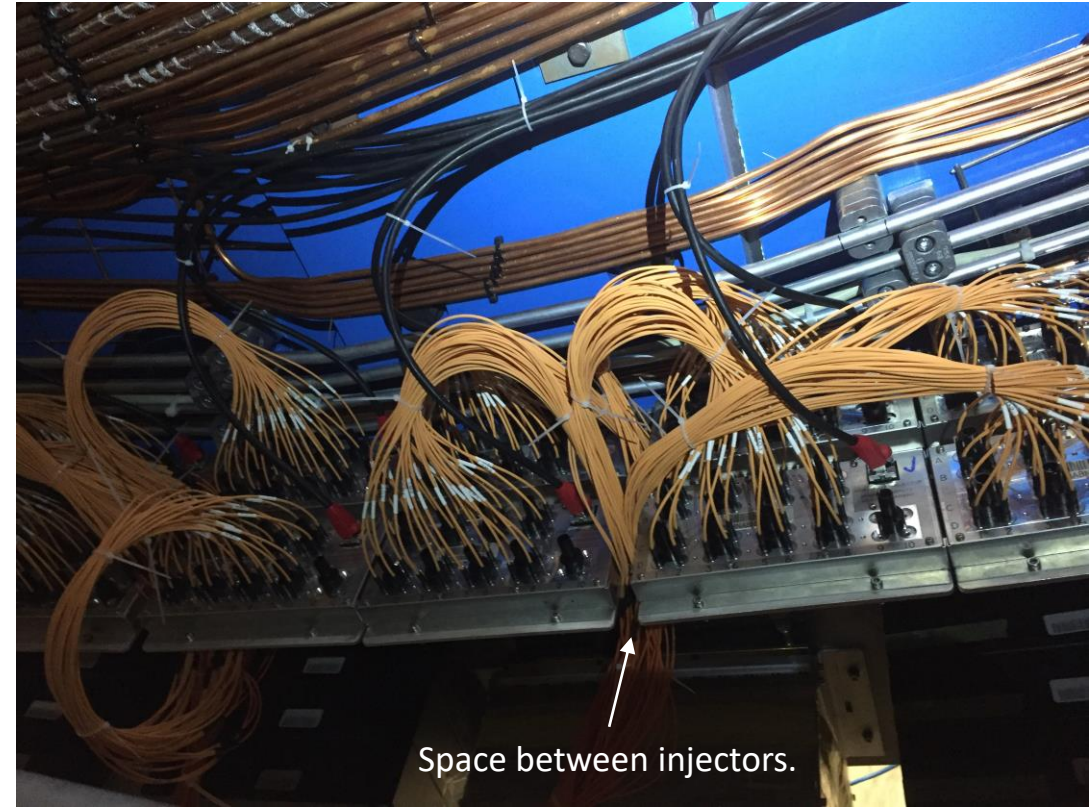
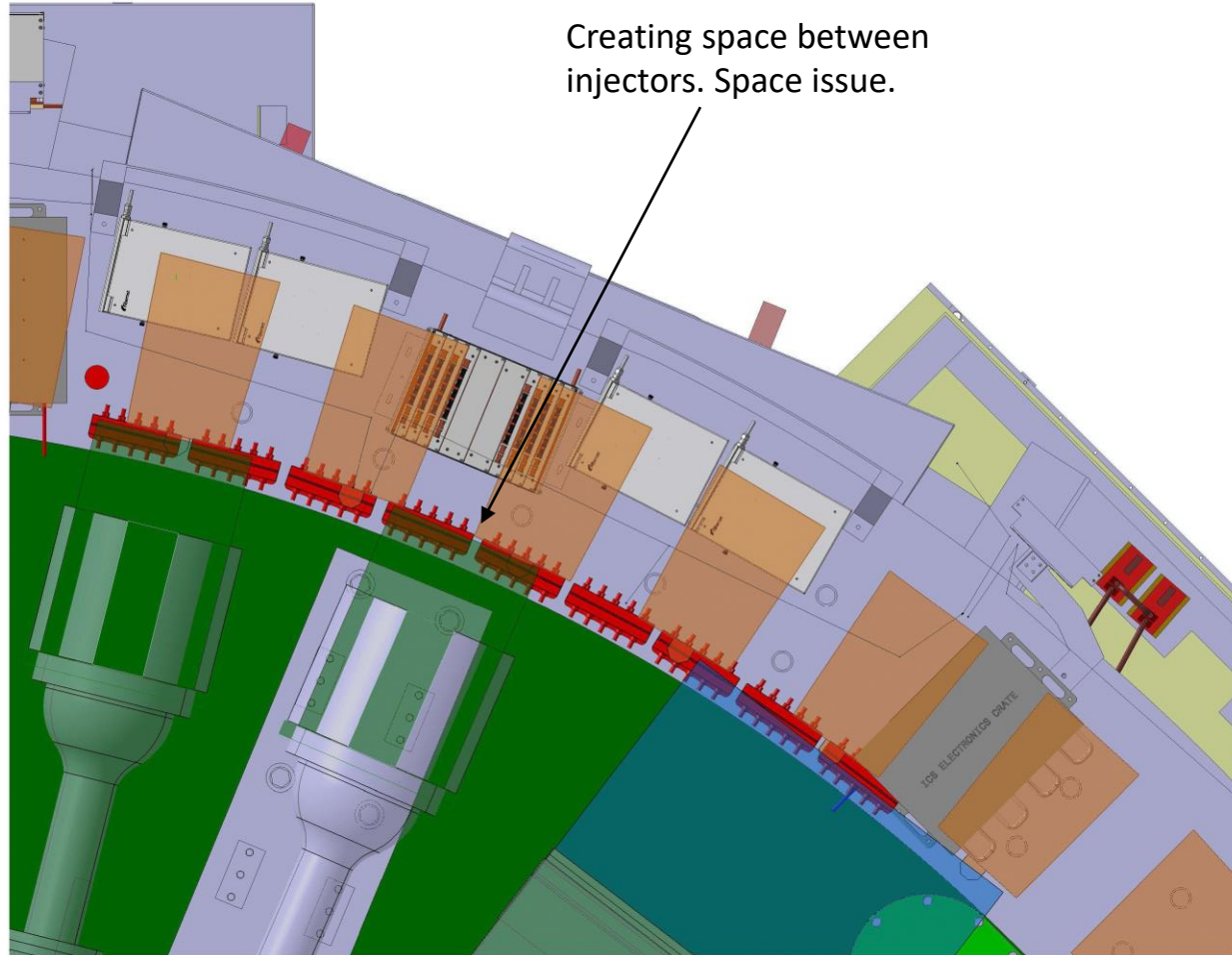
Negotiated with calorimeter people to redo those covers



Protecting cover in sectors 12 and 14 as of today

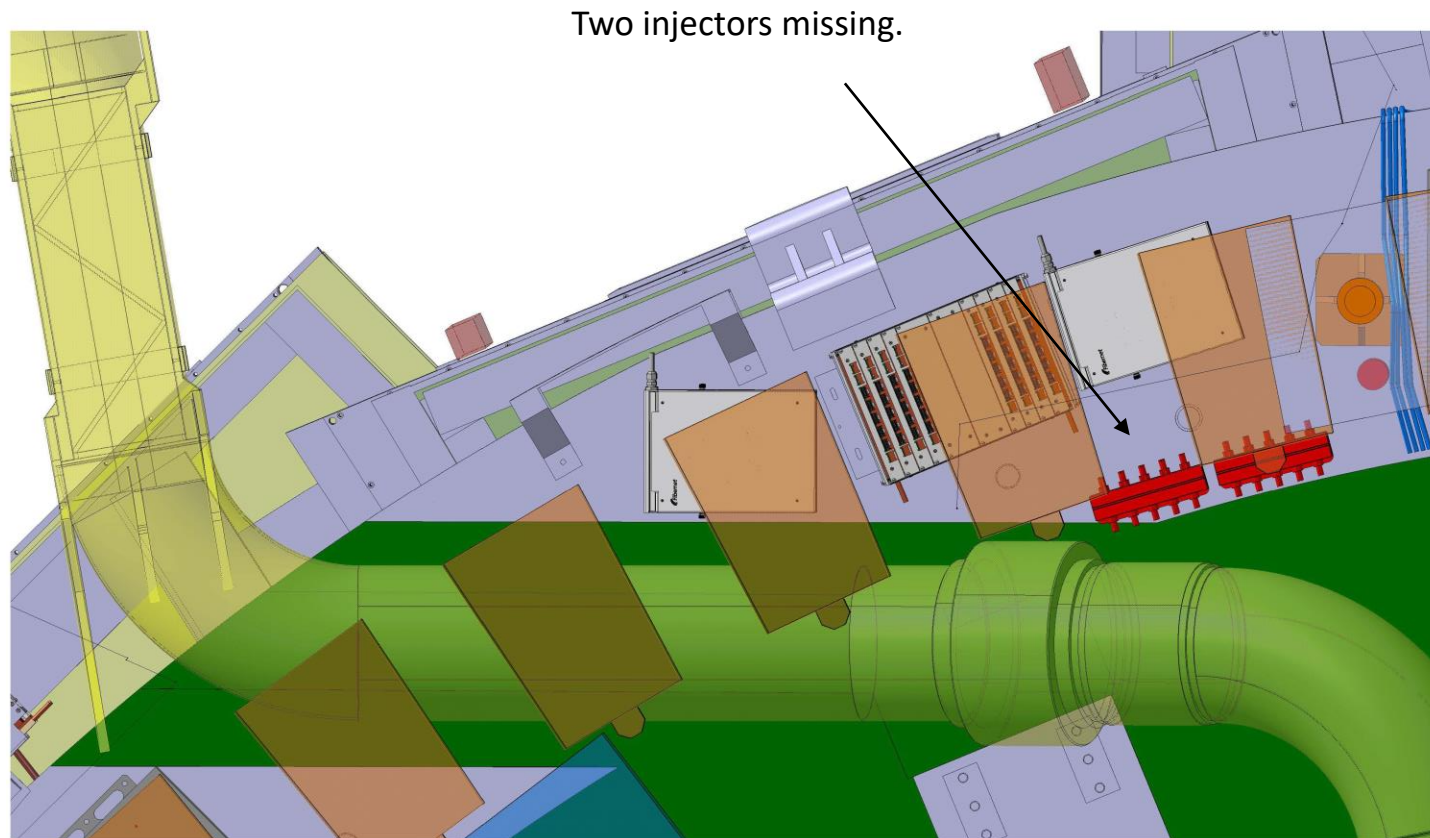
Covers in two sectors, 12 and 14, interfere with injectors. Will be rebuild by the calorimeter team.

External fibers routing issues, continued



Solution could be to stagger injectors radially to create space between them.

External fibers routing issues, continued



Kostas will look for a place for missing injectors and make a proposal.