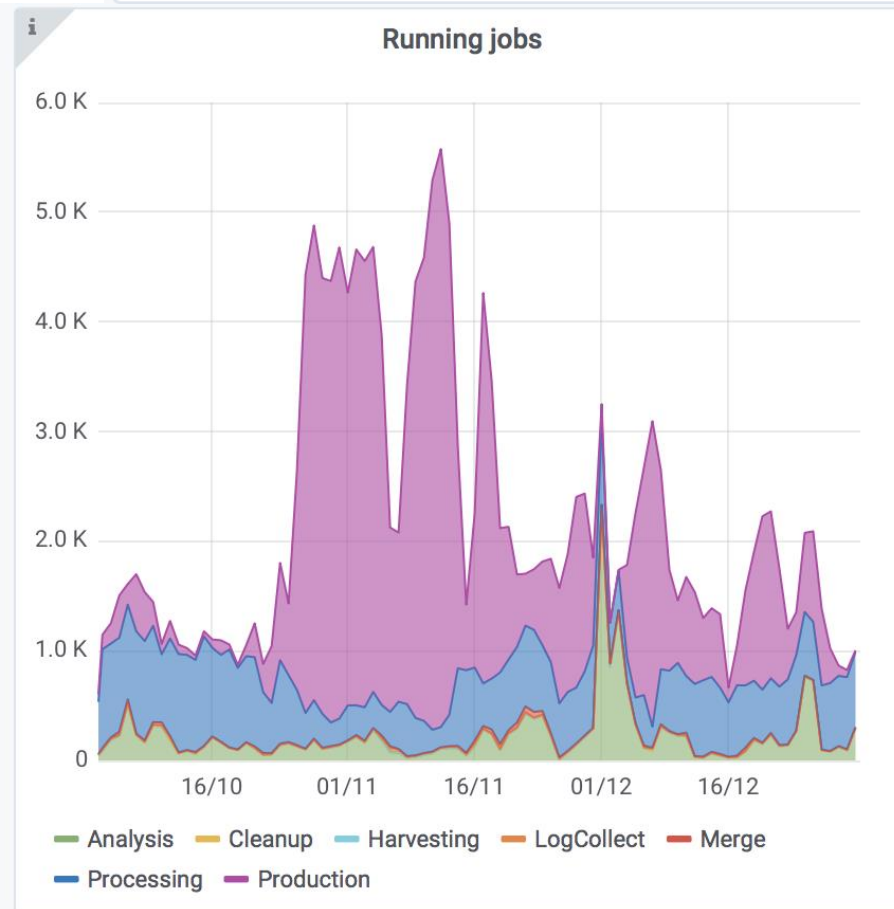
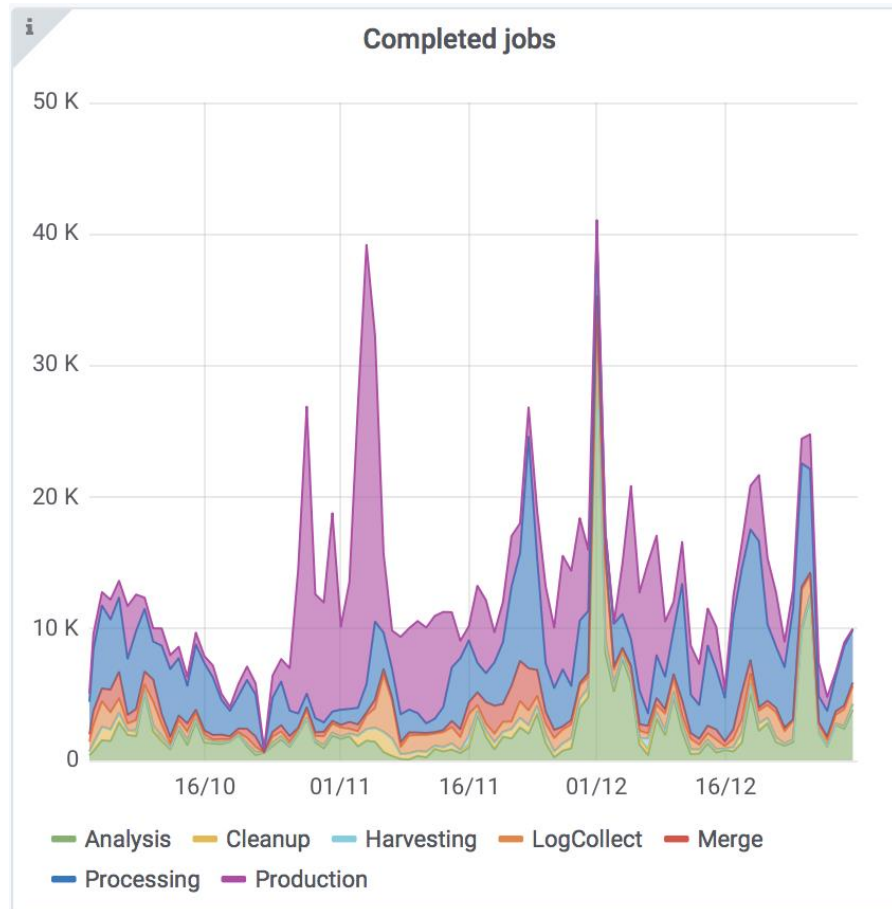
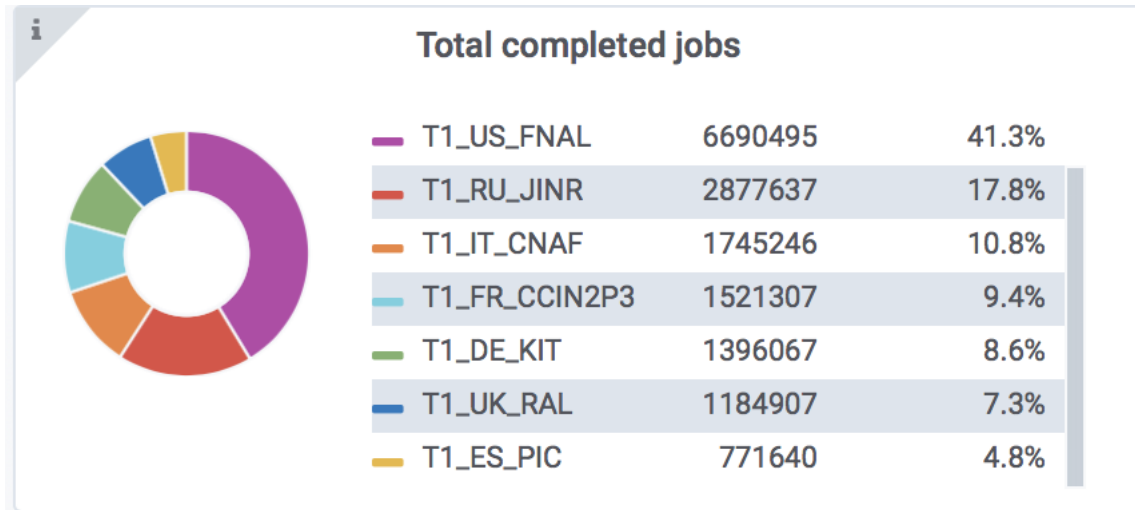


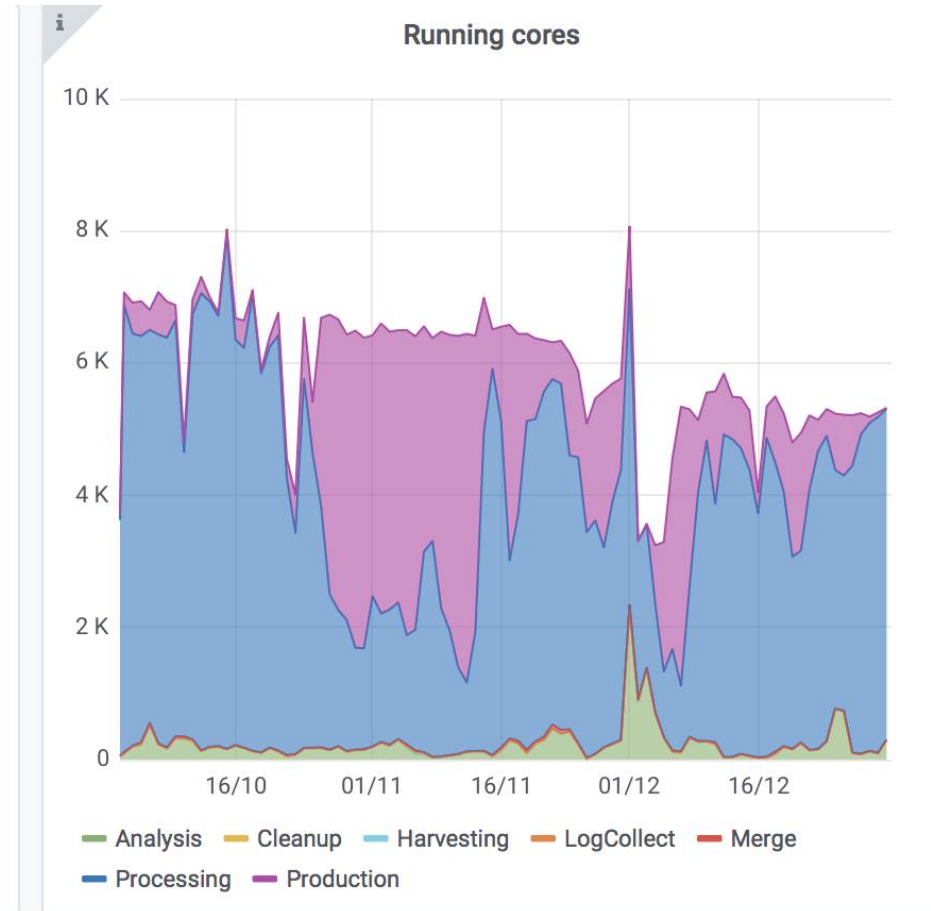
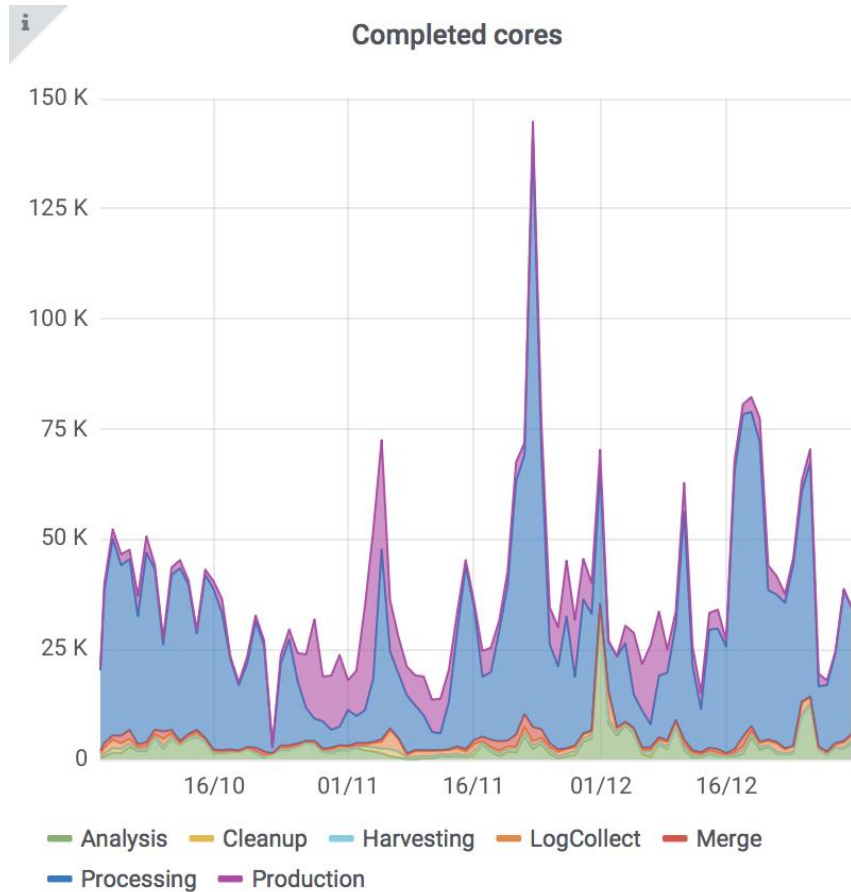
# CMS Tier-1 Experiment sign off for Q4 2019

Katy Ellis, 22 Jan 2020

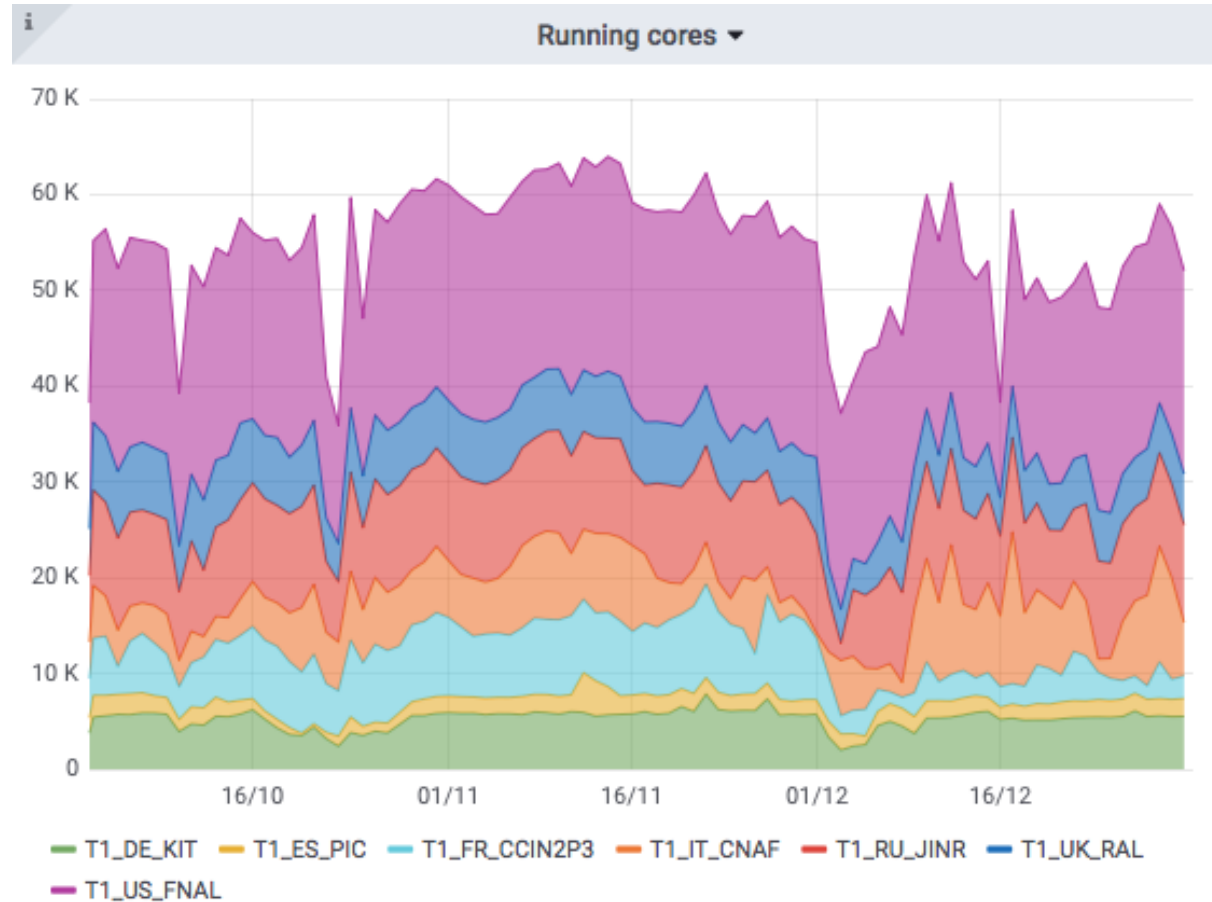
# Running jobs



# Running cores

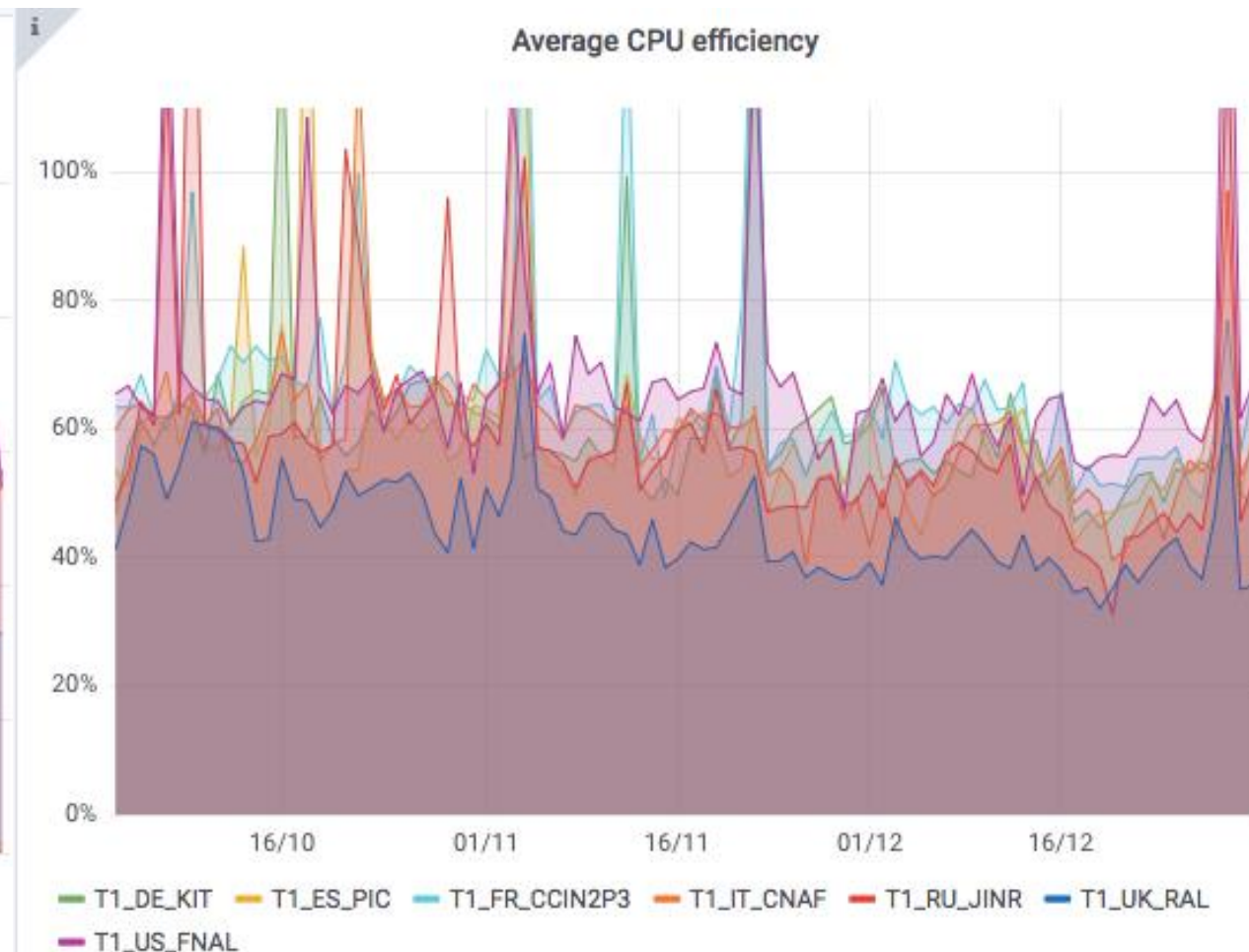
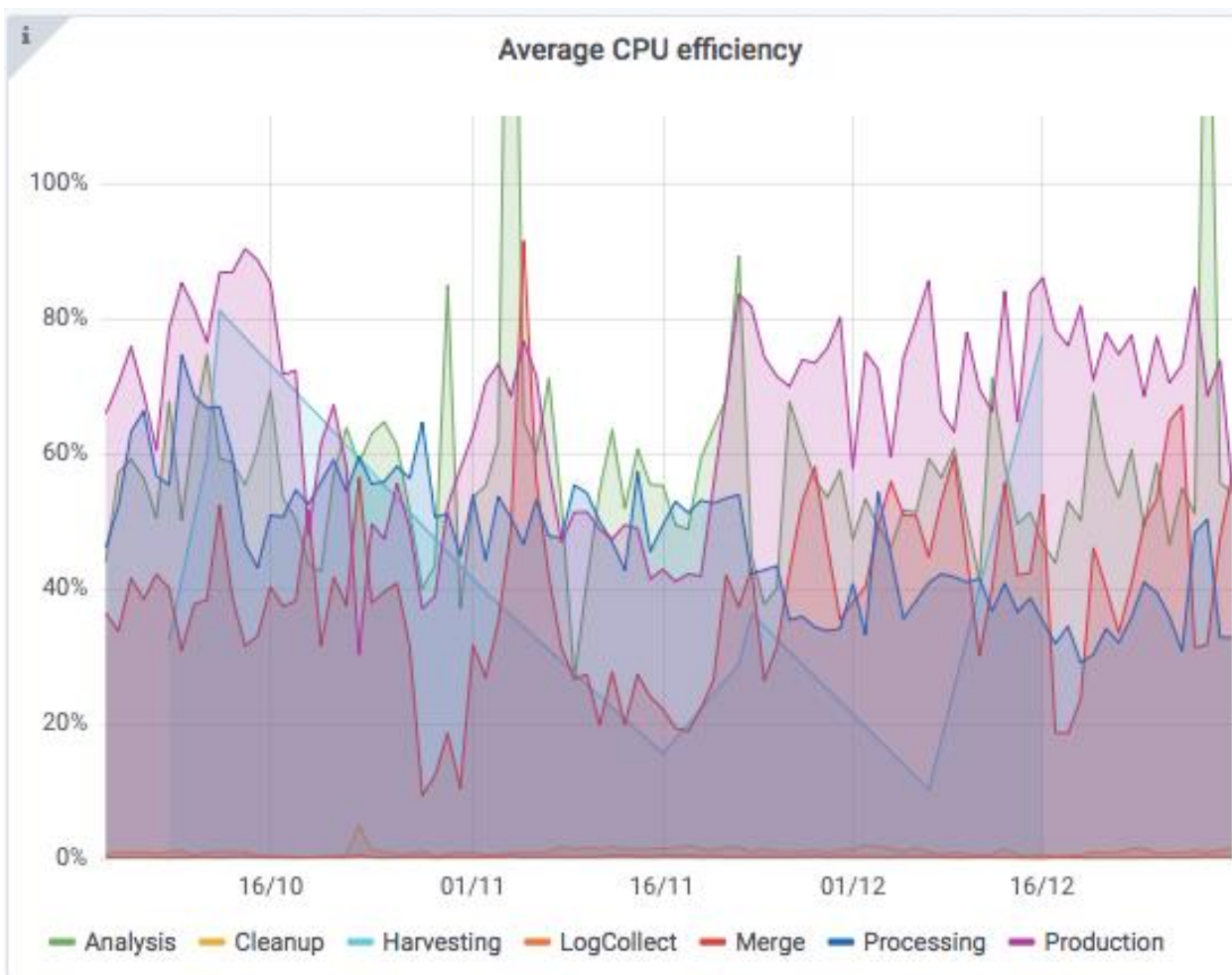


# CPU usage compared to CMS T1s



RAL pledge is 8% of CMS

# CPU efficiency – including failed jobs



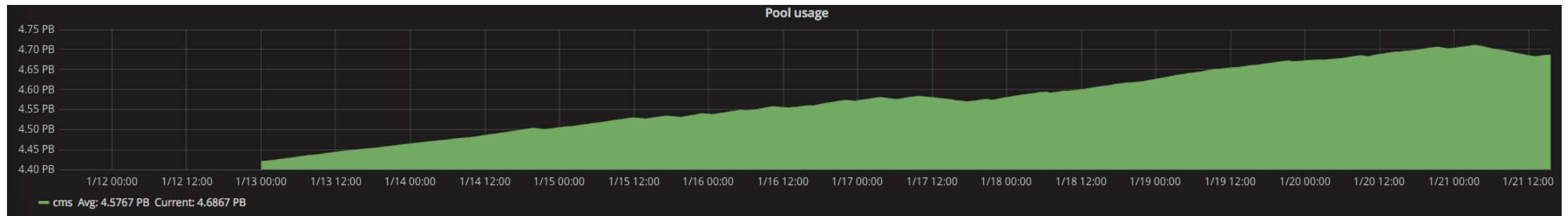
# Disk usage

Numbers are taken from the webpage \* on the last day of the month, disk used by Phedex as proportion of pledge for Phedex.

End month	Echo usage (TB)	Allocation (TB)	RAL %	FNAL %	IN2P3 %	PIC %	CNAF %	KIT %	JINR %
October	2169	5440	40	74	81	76	57	75	75
November	3161	5440	58	74	77	84	58	78	70
December	3680	5440	68	74	81	89	56	74	73

\* <http://cmsmonitoring.web.cern.ch/cmsmonitoring/storageoverview/2019/11/30/meeting.html>

Plot from the last week (13-21 Jan 2020) shows CMS usage finally returning to optimum (85-90% full):



# Tape usage

End month	Castor usage (TB)	Allocation (TB)	RAL %	FNAL %	IN2P3 %	PIC %	CNAF %	KIT %	JINR %
October	12533	17600	71	75	84	77	75	77	80
November	12770	17600	73	77	84	78	78	78	81
December	13183	17600	75	80	86	86	79	80	82