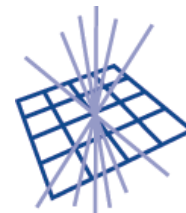




Science & Technology Facilities Council  
Rutherford Appleton Laboratory



**GridPP**  
UK Computing for Particle Physics

# ATLAS

## Tier-1 Experiment sign off for Q4 2019

Tim Adye

Rutherford Appleton Laboratory

RAL Tier1 Resource Review Meeting

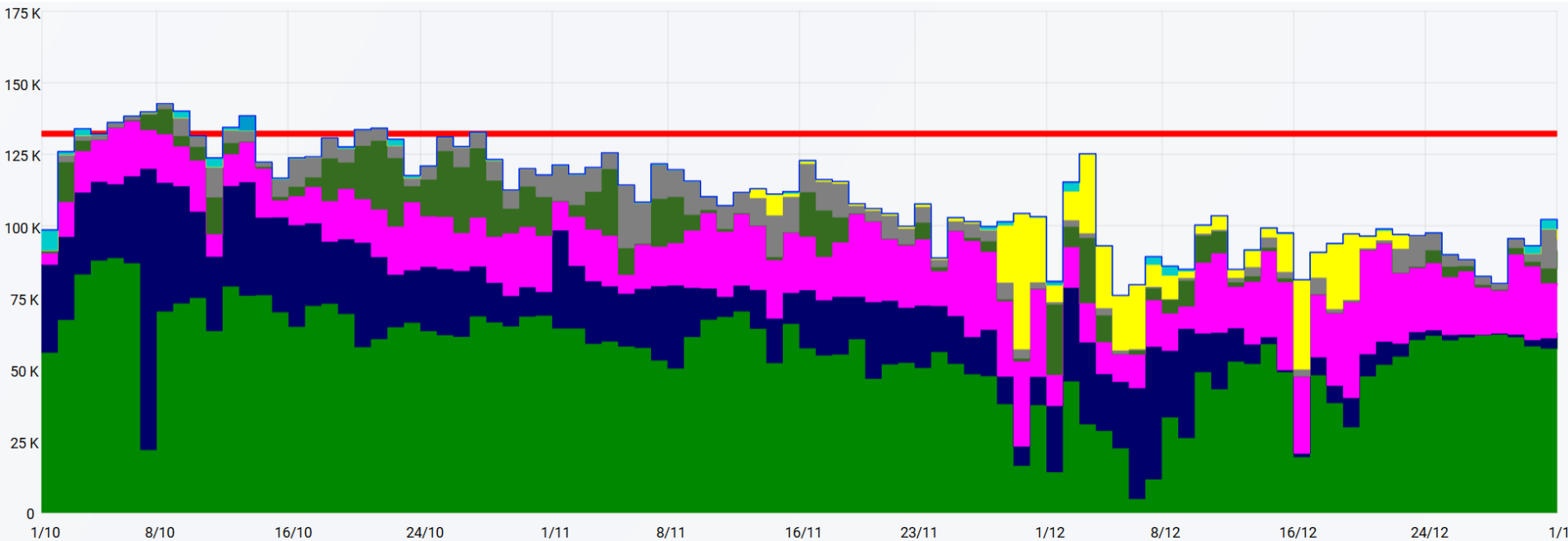
21<sup>st</sup> January 2020



ATLAS

# RAL Tier-1 ATLAS CPU use

Slots of running jobs (HEPSPEC06)



	min	max	avg	total
Pledges	132.1 K	132.1 K	132.1 K	48.7541 Mil
Group Production	4.8 K	88.8 K	55.7 K	5.1816 Mil
MC Reconstruction	200	98.0 K	19.4 K	1.8041 Mil
User Analysis	4.0 K	36.3 K	19.1 K	1.7764 Mil
MC Event Generation	7	24.5 K	6.3 K	589.3 K
Group Analysis	188	22.0 K	5.2 K	482.0 K
Data Processing	0	47.2 K	3.9 K	364.4 K
MC Simulation Full	0	6.8 K	520	48.3 K

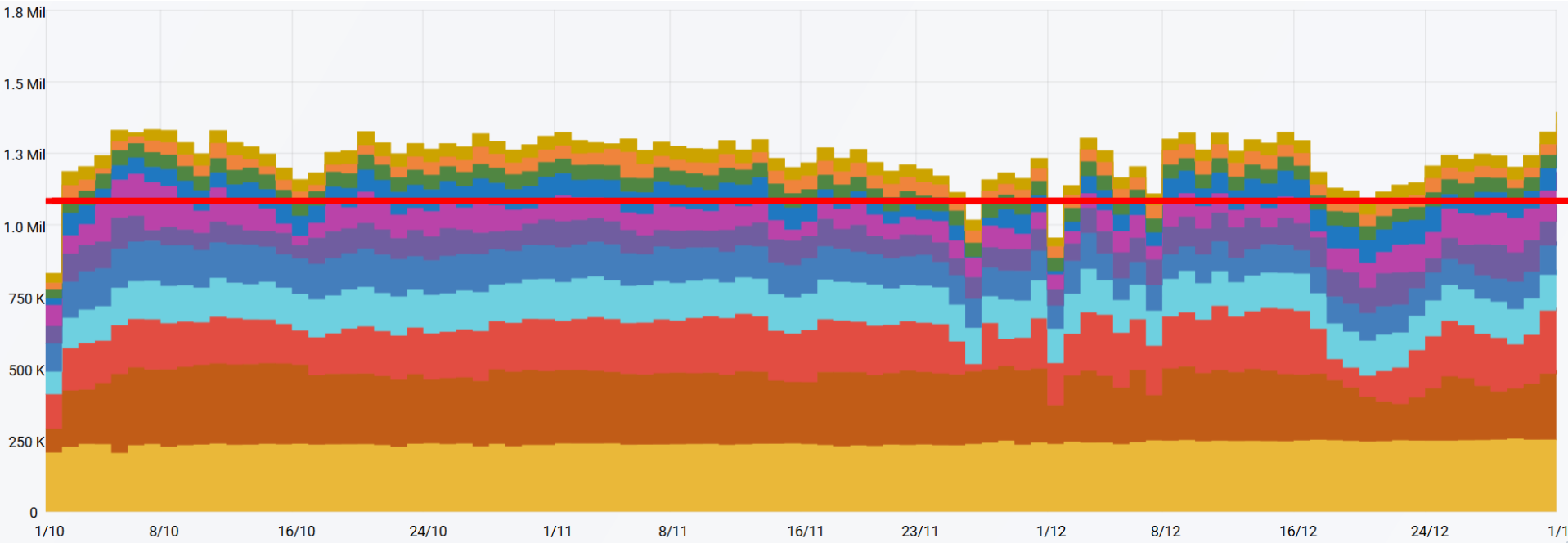
Total usage (all activities) = 110.3 kHS06 (“avg”), pledge = 132.1 kHS06 (“avg”), ie. 83.5%

We have dropped below our fairshare of the farm, mostly 89% of farm allocation.

James has tweaked the fairshare parameters and we should catch up the shortfall in the next months.

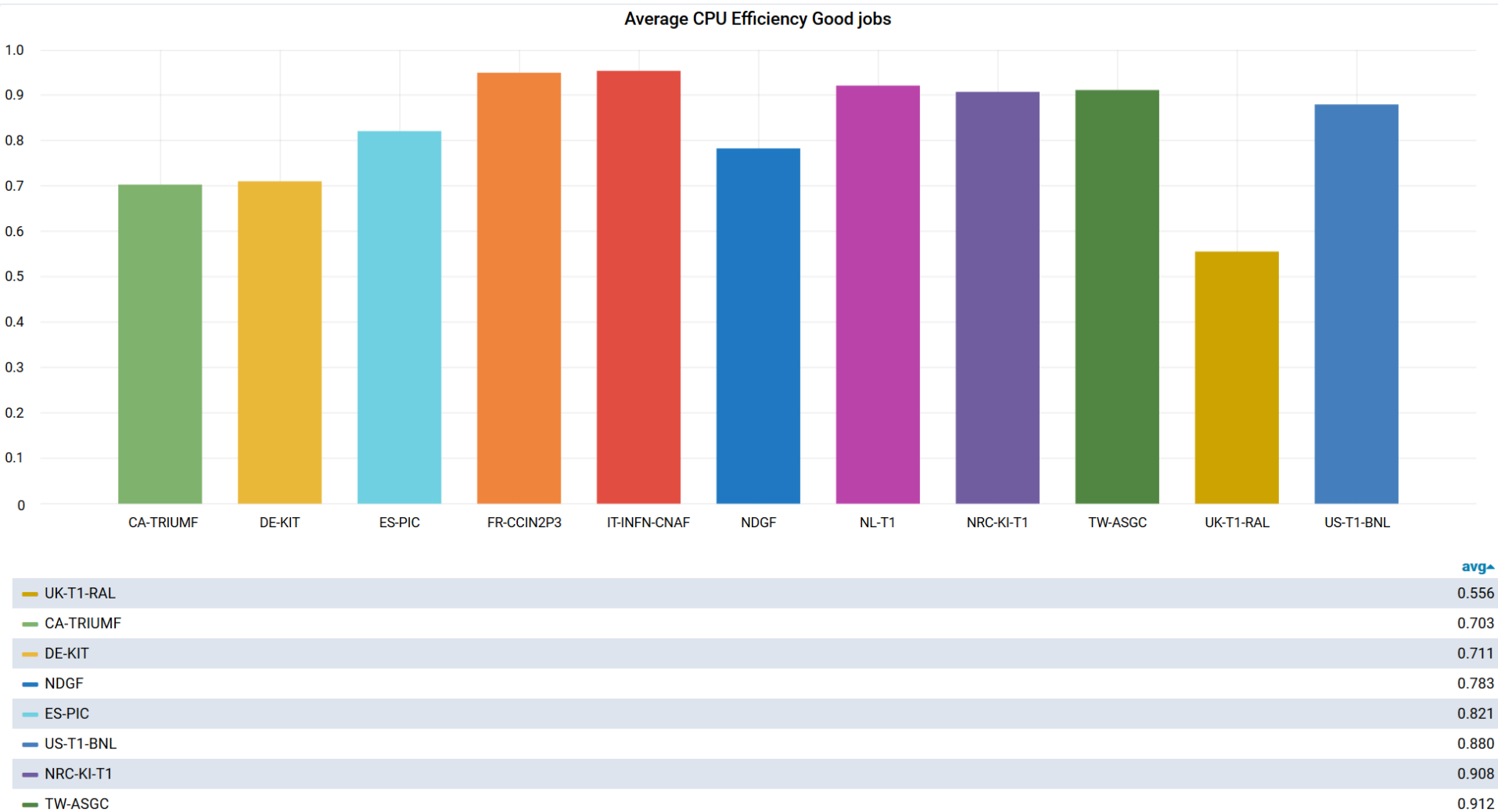
# ATLAS Tier-1s CPU use

Slots of running jobs (HEPSPEC06)



	min	max	avg	total
Pledges	1.084 Mil	1.084 Mil	1.084 Mil	399.863 Mil
CA-TRIUMF	205 K	255 K	238 K	22.169 Mil
US-T1-BNL	83 K	282 K	234 K	21.741 Mil
FR-CCIN2P3	26 K	227 K	166 K	15.463 Mil
DE-KIT	79 K	152 K	128 K	11.948 Mil
UK-T1-RAL	76 K	143 K	110 K	10.260 Mil
NL-T1	37 K	128 K	81 K	7.511 Mil
NDGF	20 K	168 K	80 K	7.481 Mil

# ATLAS Tier-1s CPU efficiency

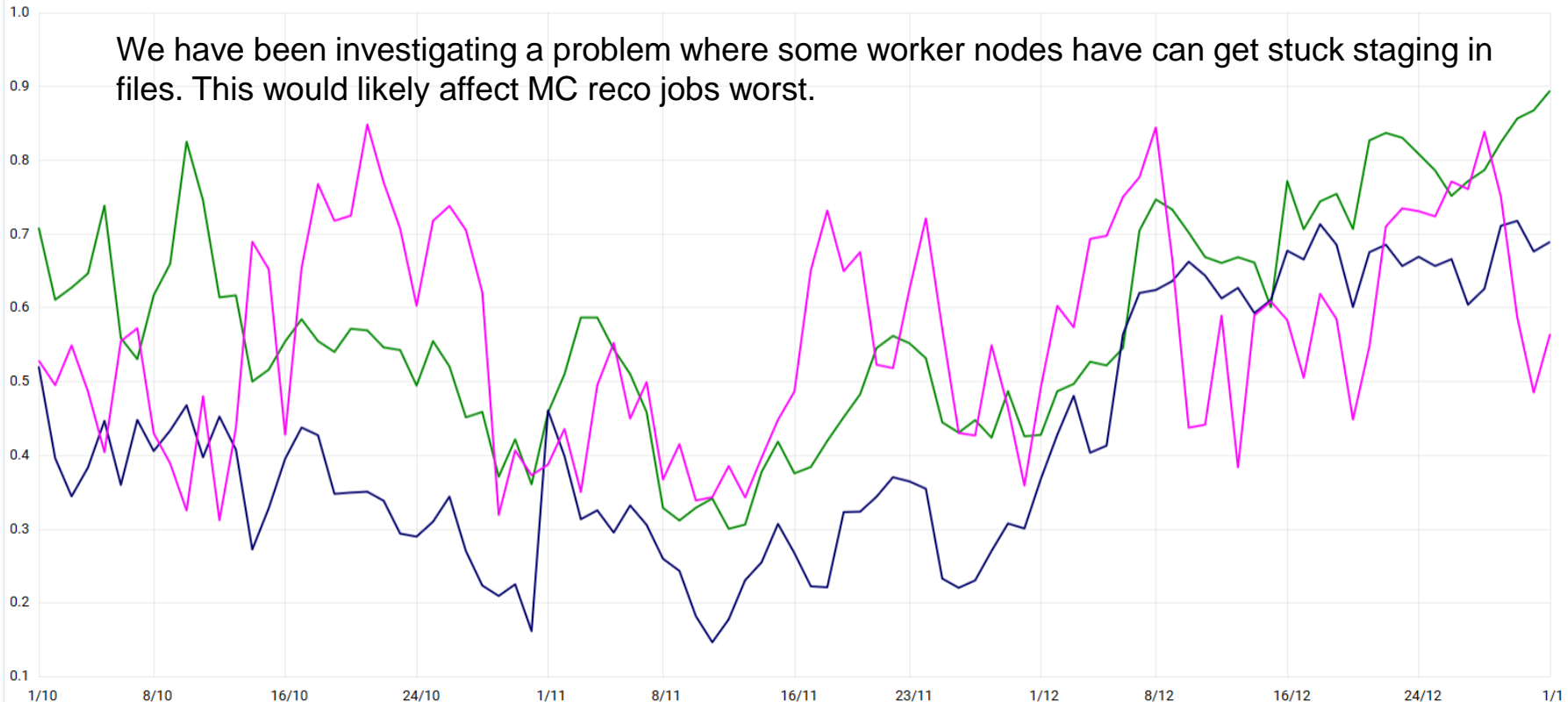


ATLAS haven't traditionally worried about efficiencies, since different sites have quite different definitions. Still, 56% doesn't look good.

# RAL Tier-1 ATLAS CPU efficiency

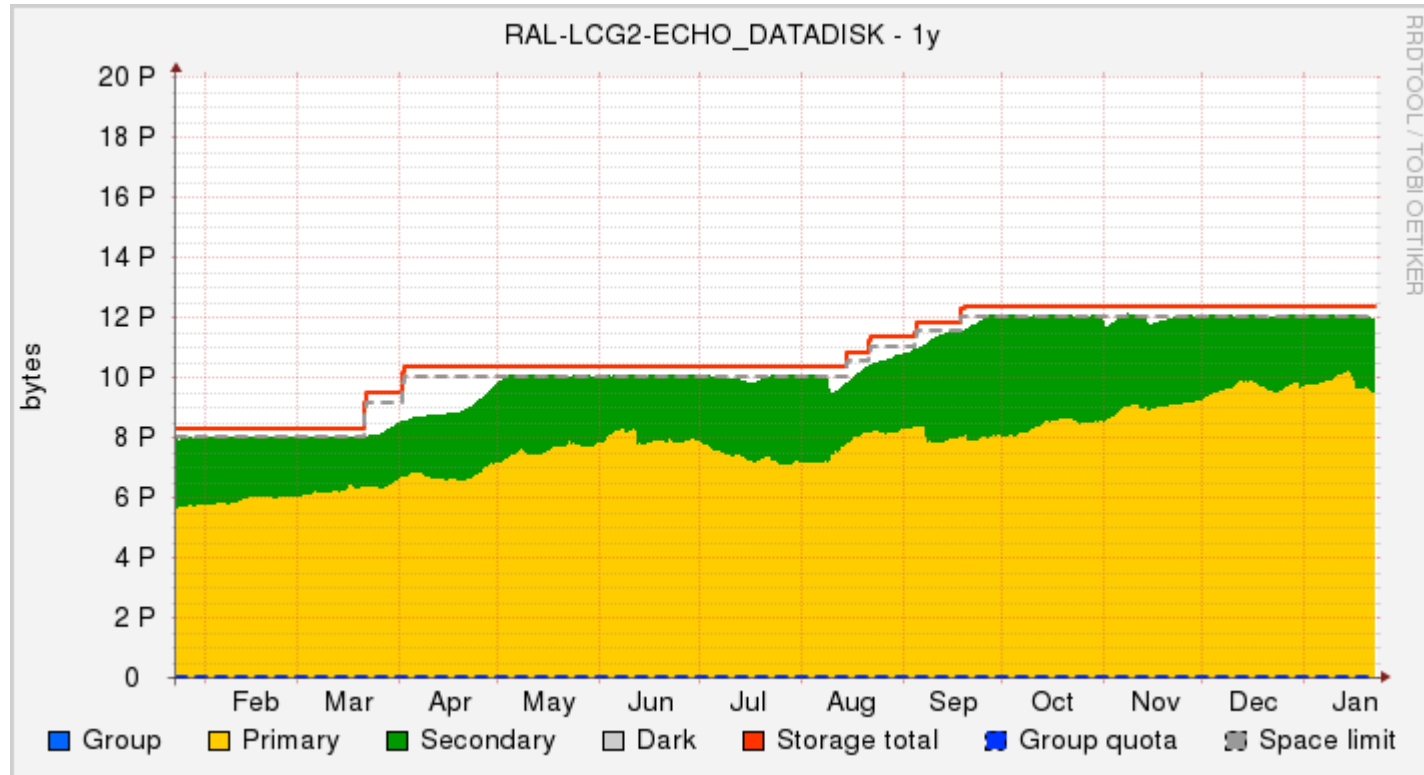
CPU Efficiency: Good jobs

We have been investigating a problem where some worker nodes have can get stuck staging in files. This would likely affect MC reco jobs worst.



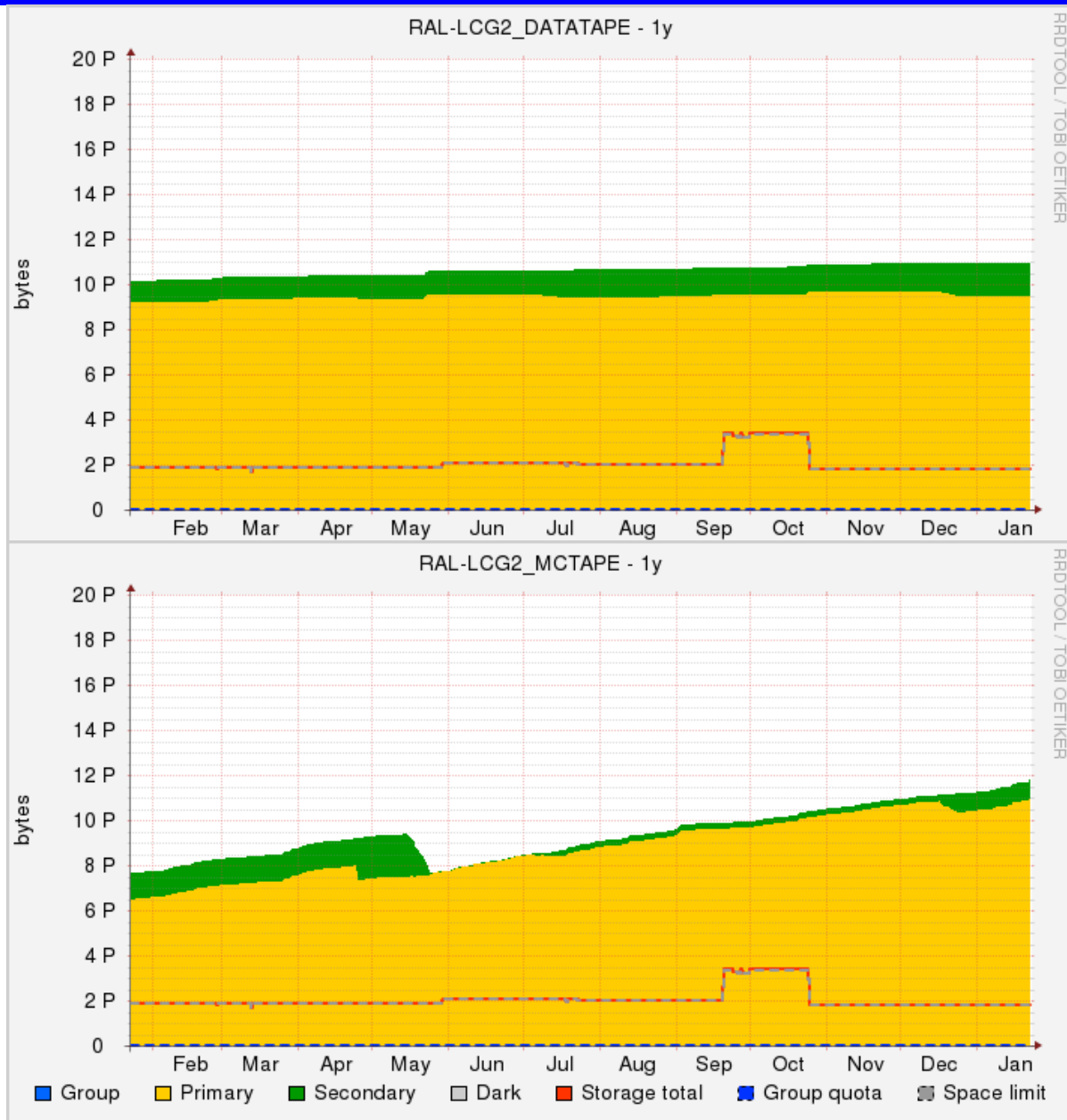
	min	max	current
Data Processing	0	0.912	0
Group Analysis	0.211	0.968	0.849
Group Production	0.301	0.894	0.894
MC Event Generation	0	1.882	0.989
MC Reconstruction	0.147	0.718	0.689
MC Simulation	0	0.547	0.523
MC Simulation Fast	0	0.992	0.917
MC Simulation Full	0	0.979	0.978
Others	0	0.765	0.283
Testing	0.155	0.781	0.691
User Analysis	0.312	0.848	0.565

# RAL Disk usage



RAL Echo quota increased on request in Aug/Sep to provide 2020 quota early.

# RAL tape usage



SRM quotas don't seem to be used for RAL tape. No problem, as we are still well below our allocation. We should keep an eye on this.