



European Institute of  
Innovation & Technology

The EIT is a body of the European Union



# Making Innovation Happen

Geneva, 15 November 2019

# THE EIT – UNIQUE INNOVATION INSTRUMENT

- Enhances Europe's **innovation capacity, competitiveness & quality of life**
- **Innovation ecosystems** to increase cooperation and integration between business, education and research
- Addresses **societal challenges**
- **Unique features:** pan-European, long-term (7-15 years), financial sustainability



Student to  
entrepreneur

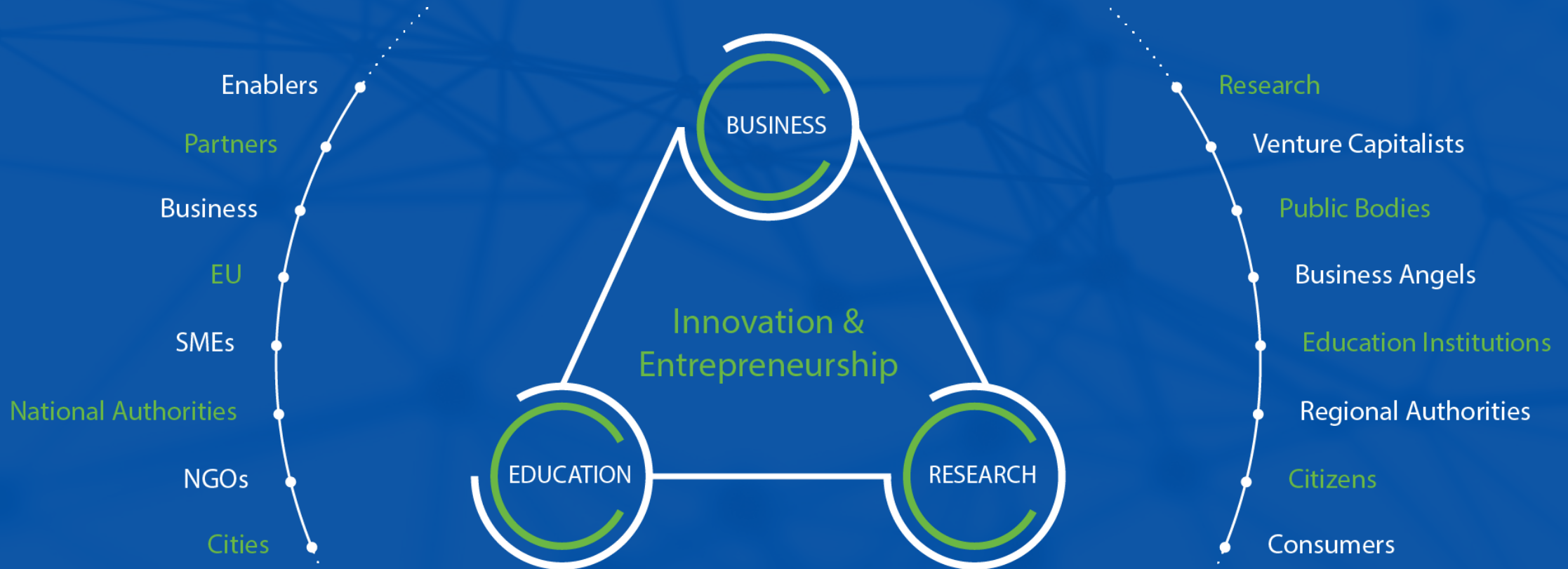


Idea to  
product



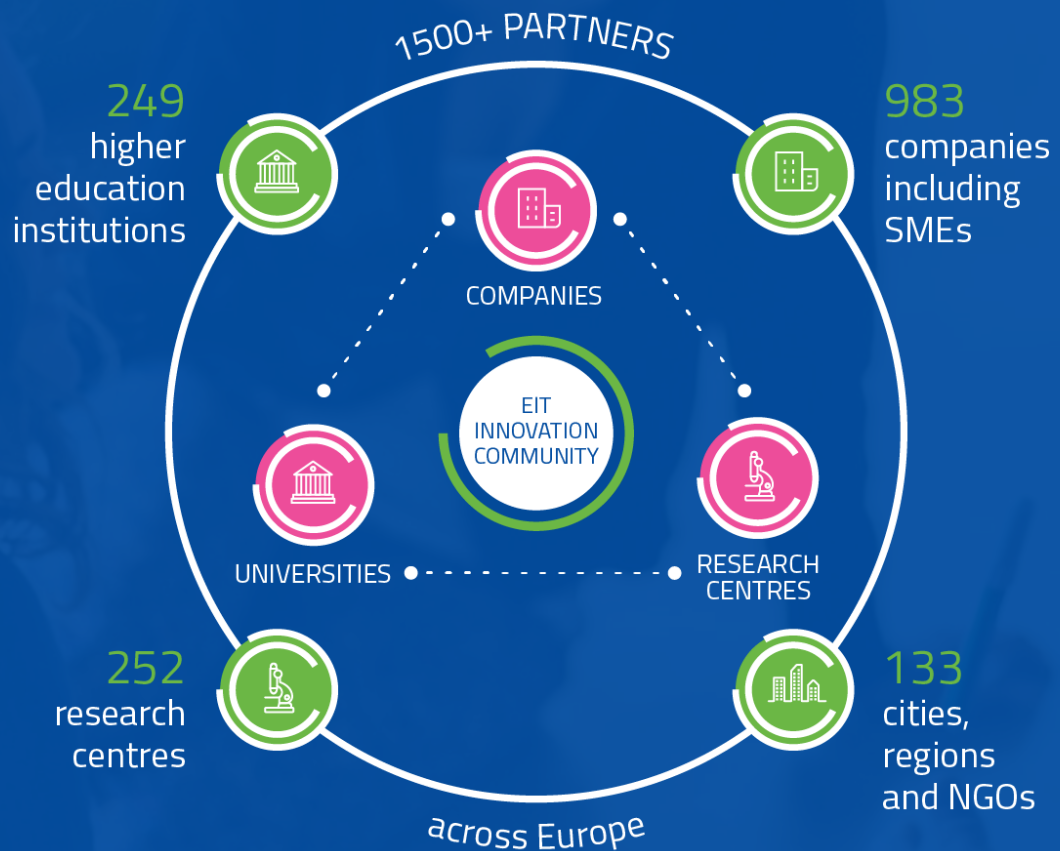
Lab to  
customer

# EIT INNOVATION MODEL

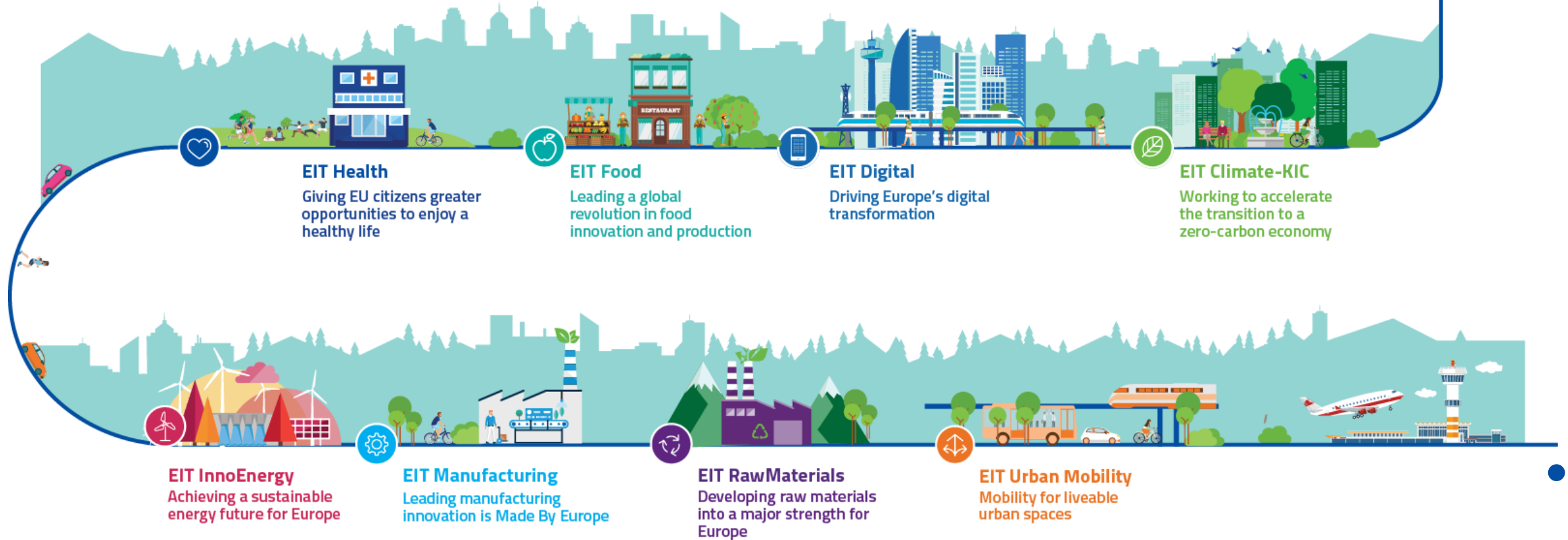




# EUROPE'S LARGEST INNOVATION COMMUNITY

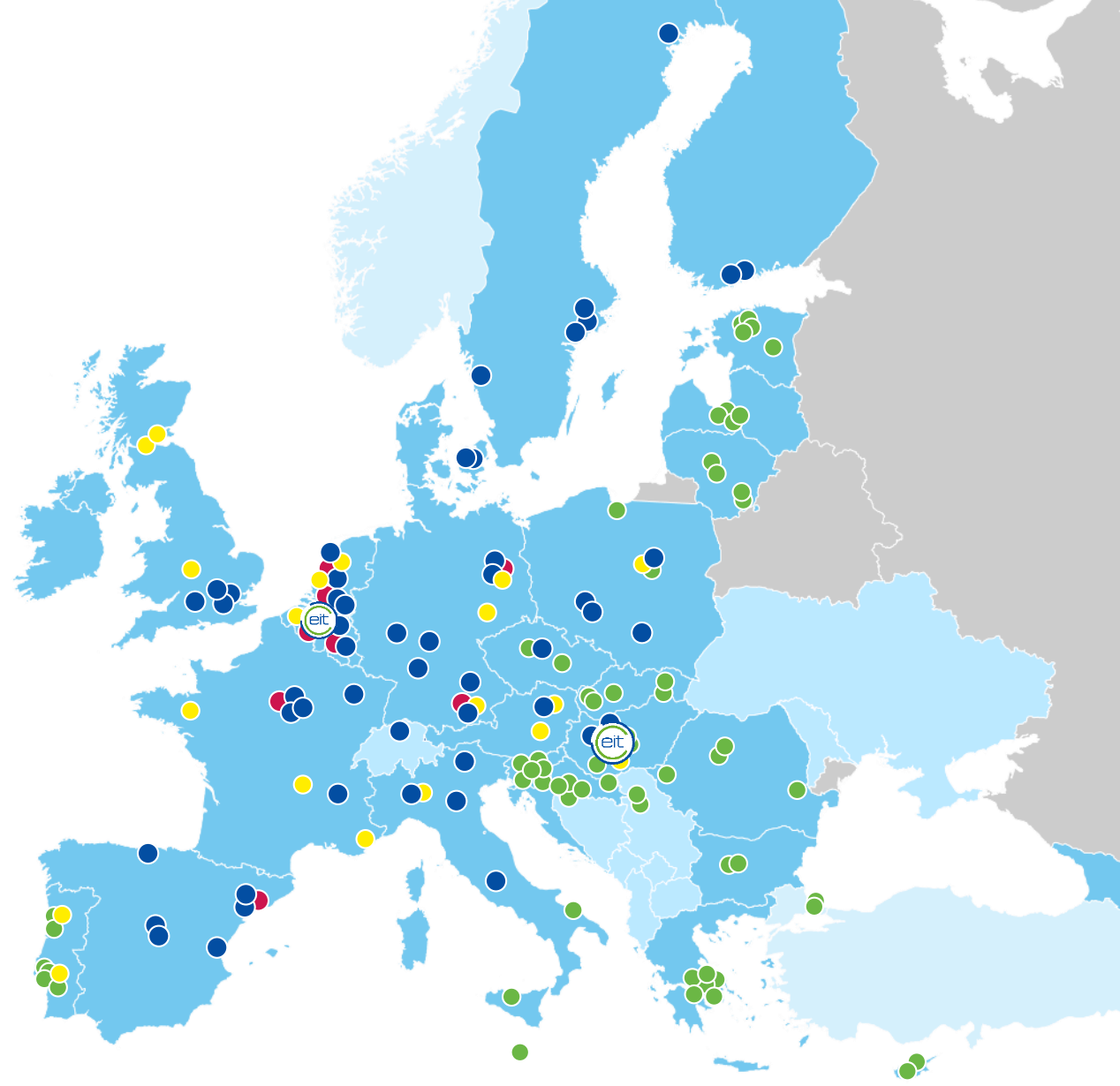


# EIT INNOVATION COMMUNITIES

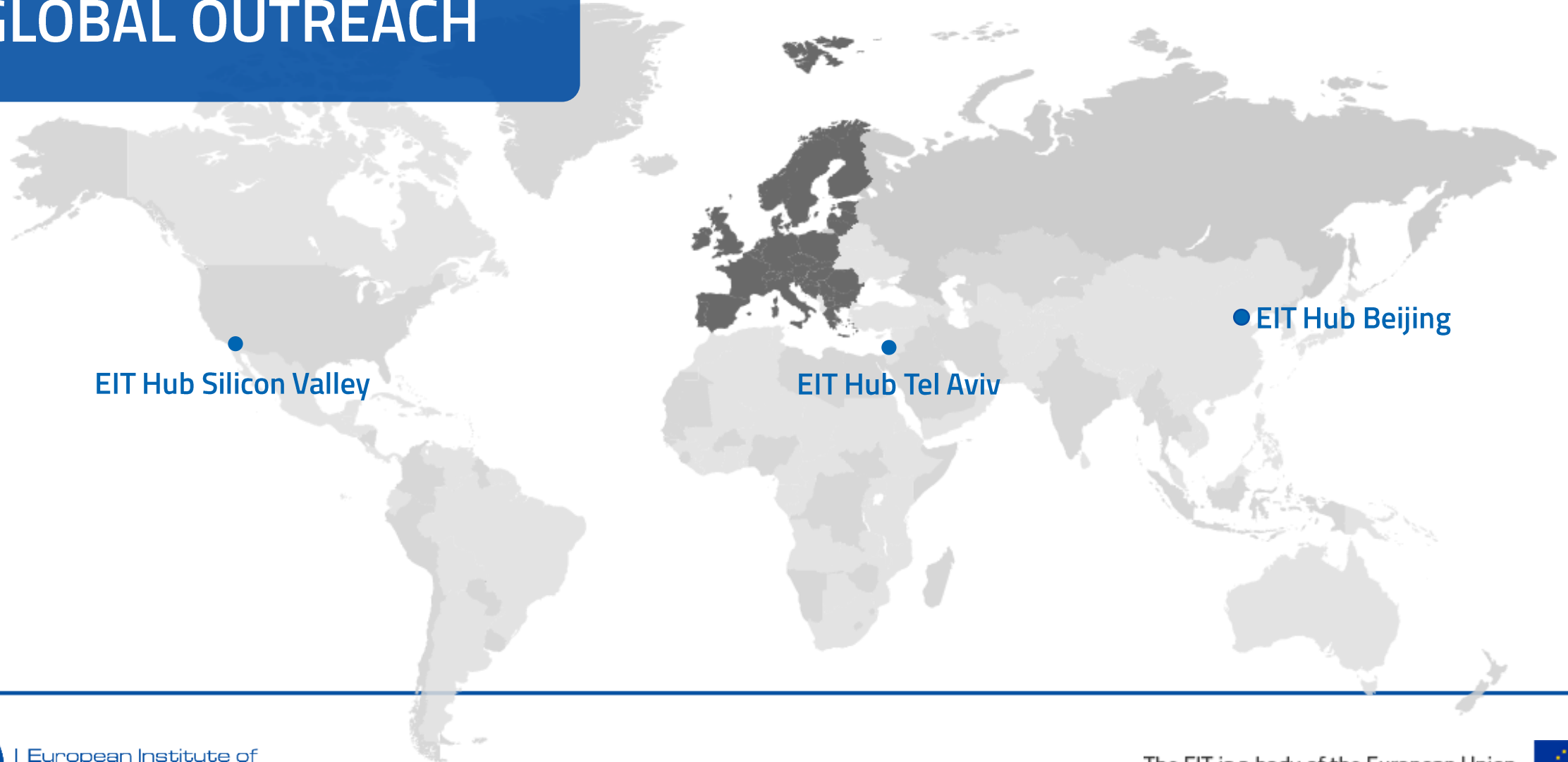


# EIT COMMUNITY ACROSS EUROPE

- Headquarters
- Innovation Hubs (Co-Location Centres)
- Offices
- EIT Hubs under EIT Regional Innovation Scheme



# EIT COMMUNITY GLOBAL OUTREACH



European Institute of  
Innovation & Technology

The EIT is a body of the European Union





# EIT REGIONAL INNOVATION SCHEME CREATING A EUROPEAN INNOVATION COMMUNITY

## Objective

- Contribute to enhancing of the innovation capacity in **moderate and modest innovators\*** Member States and Horizon 2020 Associated Countries

## Approach

- Share and transfer good practices and experience **emerging from the EIT Community's activities**
- **Widen participation in EIT Innovation Communities** and facilitate access to wider networks
- Support collaboration in regions and countries in line with the priorities set out in **Smart Specialisation Strategies (RIS3)**

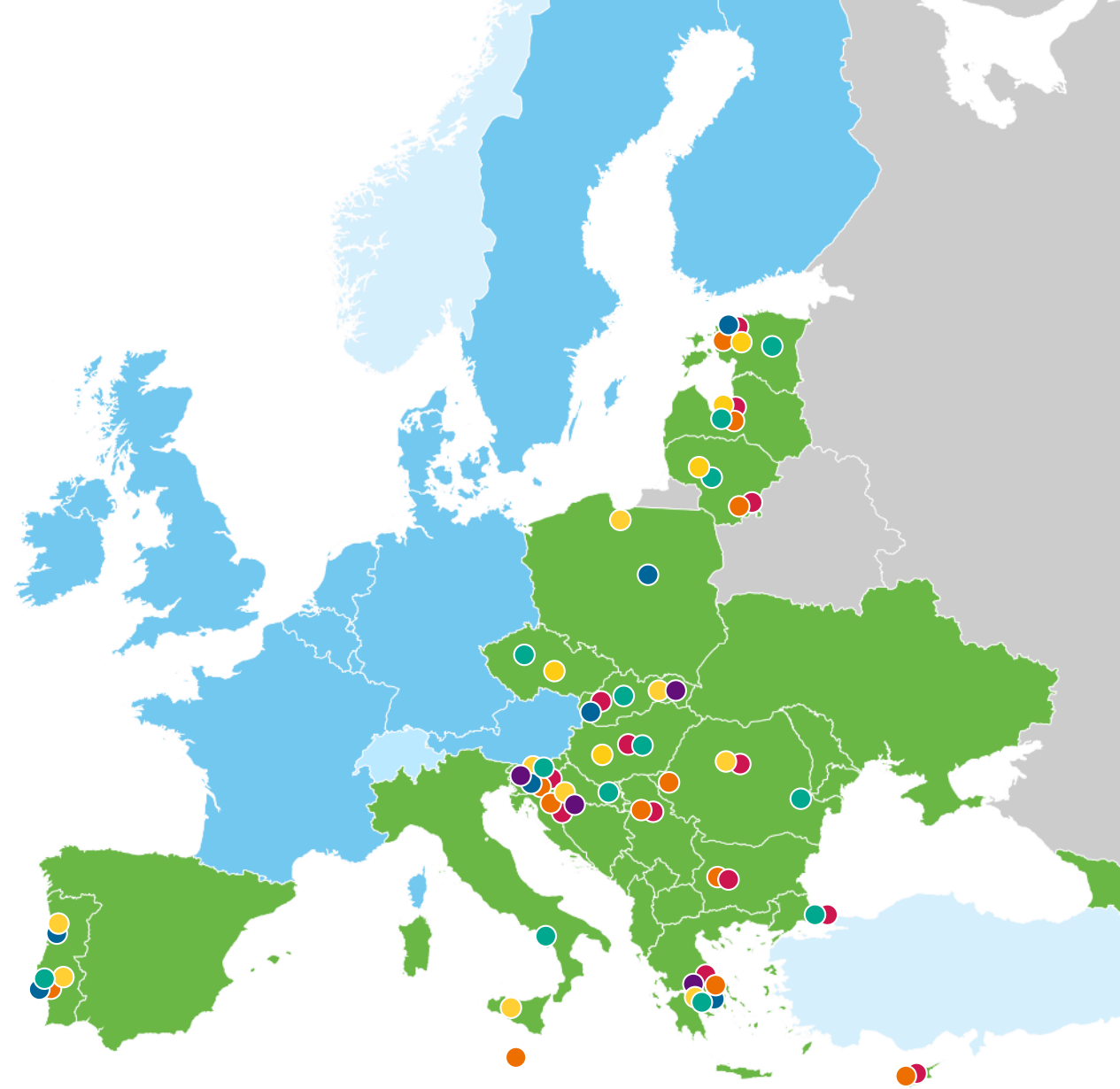
*\* European Innovation Scoreboard*





# EIT REGIONAL INNOVATION SCHEME HUBS

-  EIT Climate-KIC
-  EIT Digital
-  EIT Food
-  EIT Health
-  EIT InnoEnergy
-  EIT RawMaterials



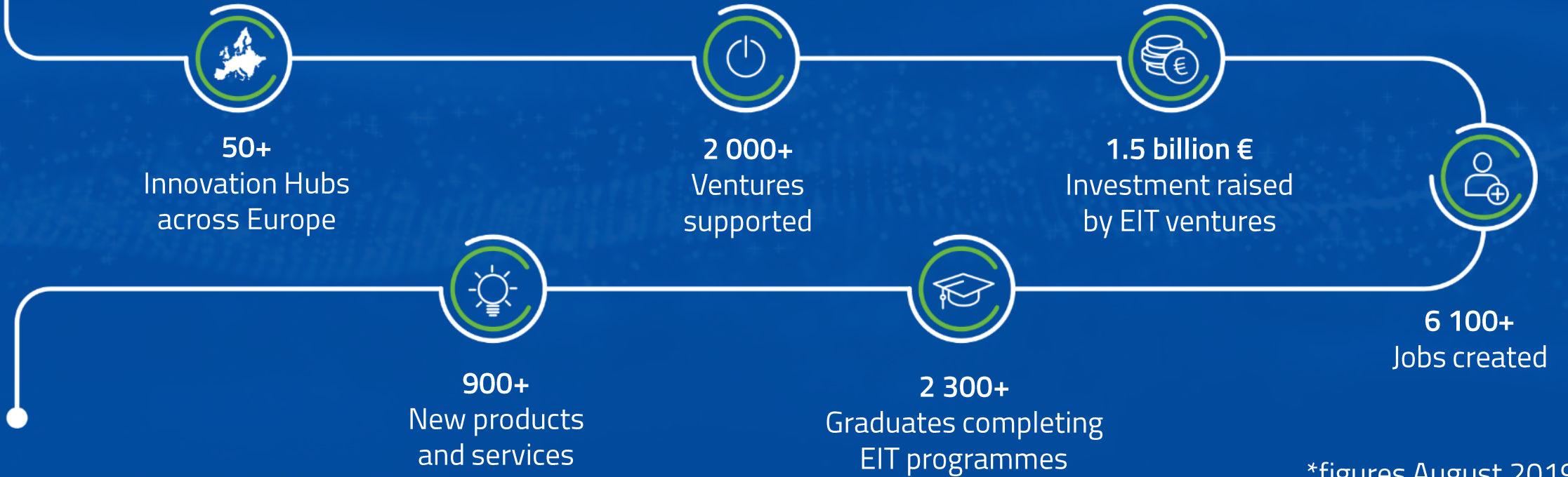
# EIT REGIONAL INNOVATION SCHEME: BUILDING BLOCKS





# EIT RESULTS

## EUROPE'S TRIED, TESTED AND PROVEN INNOVATION ENGINE



\*figures August 2019

# northvolt®

- **Country:** Sweden
- **Description:** High quality lithium-ion battery
- **Aim:** Build the world's greenest battery, with a minimal carbon footprint and the highest ambitions for recycling, to enable the European transition to renewable energy
- **EIT Connection:** EIT InnoEnergy investment
- **Team:** 250+
- **Funding raised:** € 1.3 billion

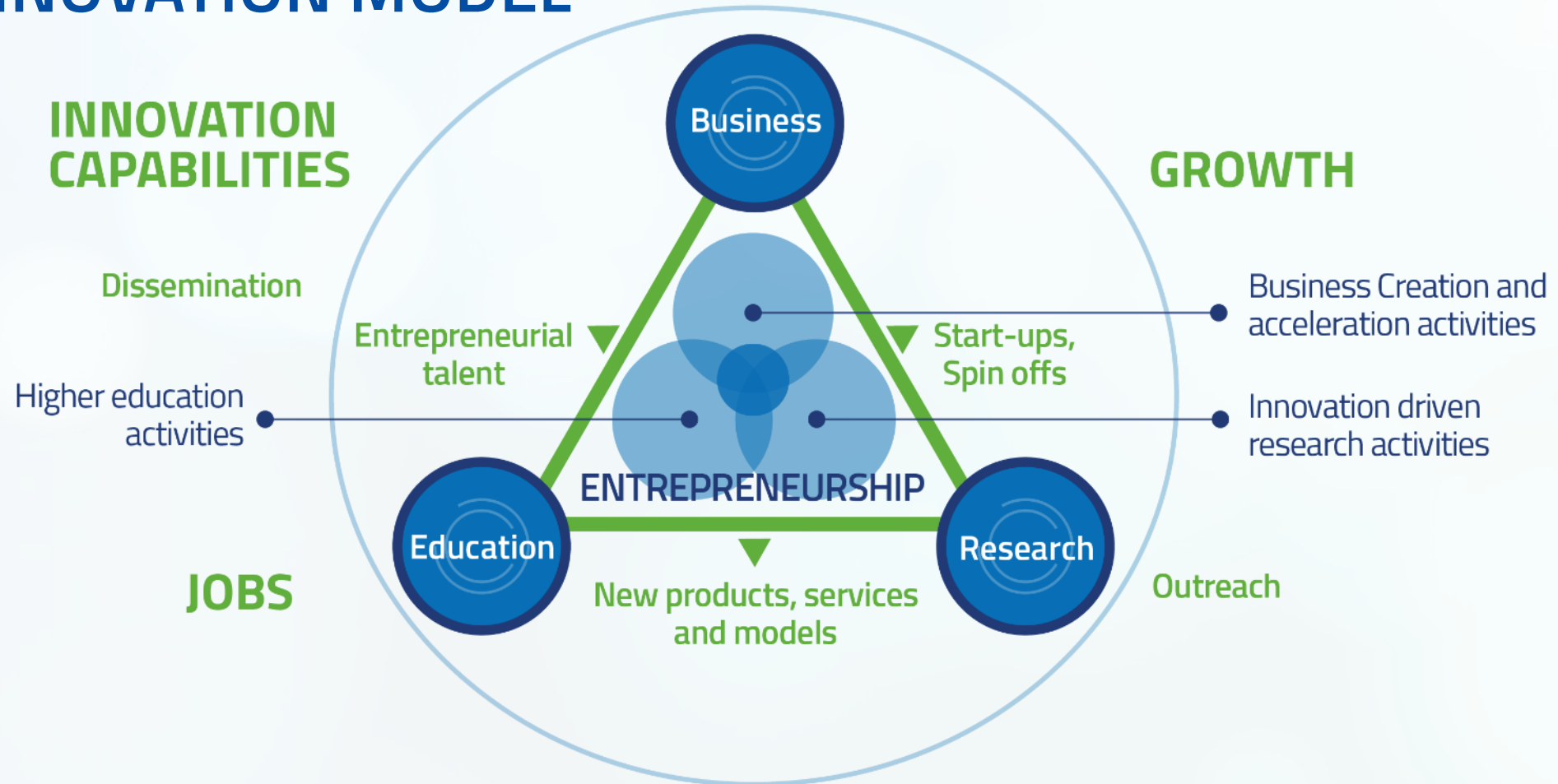


EIT InnoEnergy is the gateway to the largest and most valuable innovation ecosystem in Europe. EIT InnoEnergy's network has the power to support us for years to come.

**Peter Carlsson, CEO & co-founder Northvolt**



# EIT INNOVATION MODEL



# EIT INNOVATION COMMUNITY MODEL

- **Independent legal entity:** gathering world-class partners
- **Autonomy & flexibility:** to determine organisational structure and activities
- **Long-term strategic approach:** set up for a minimum of 7 years to eventually become financially sustainable
- **Smart funding & high degree of partner commitment:** 25% - 75%
- **Effective governance:** run by a CEO and a lean management team
- **Innovation Hubs:** 5-8 per Innovation Community
- **Results & high impact oriented activities:** 7-year Strategy and Annual Business Plans
- **Culture:** strong entrepreneurial mind-sets at national, European and international levels





# EIT INNOVATION HUBS



Bring ideas and people together in new ways



Contribute to the development of a regional entrepreneurial culture



Build trust and openness among their partners



Create opportunities for new and existing organisations to access leading European teams

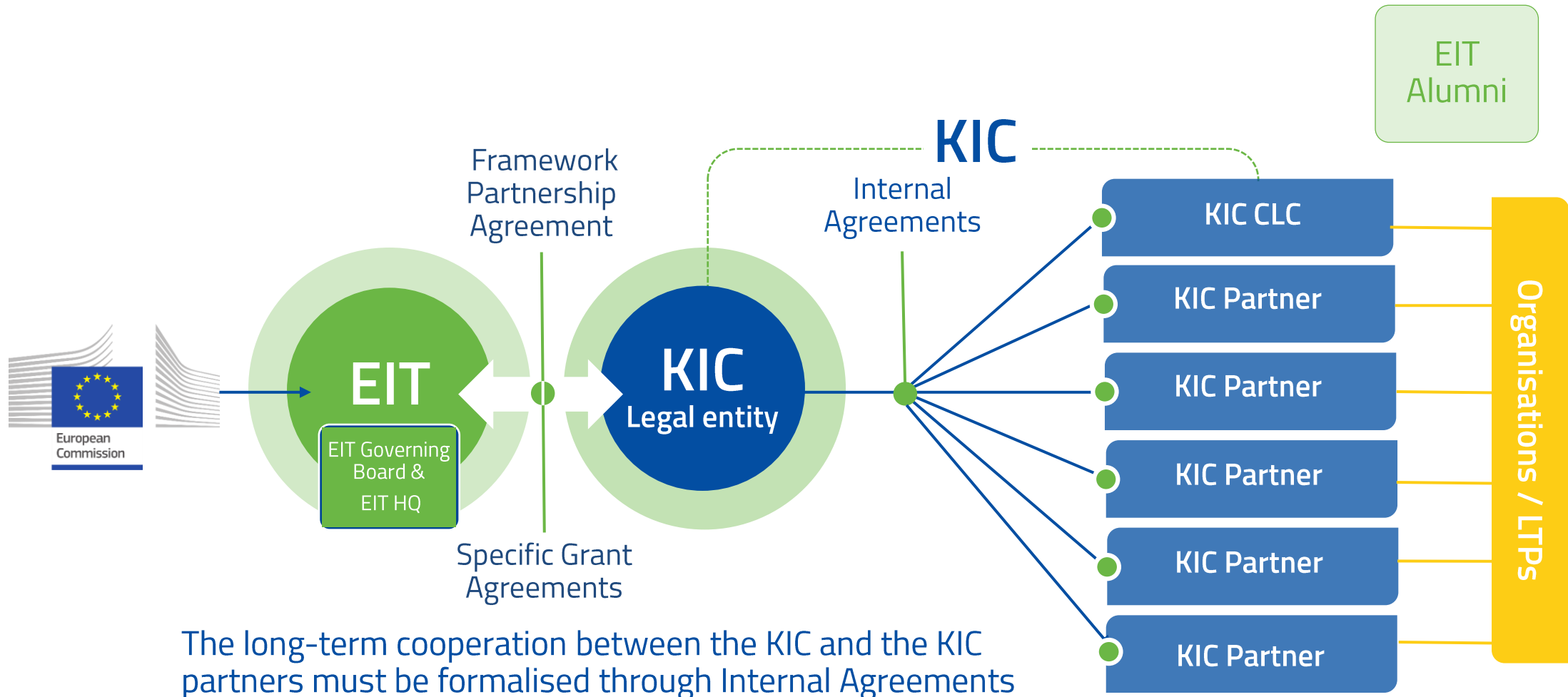


Seek synergies and complementarities with regional, national and EU policies & programmes to boost innovation and entrepreneurship



Facilitate the exchange of ideas and interactions between partners and other stakeholders

# Engaging with EIT Community: contractual relations





# EIT FUNDING MODEL: CREATING LEVERAGE

**KAVA**  
(KIC Added Value Activities)  
Education, research, business creation and innovation activities in the Business Plan of and carried out by the EIT Innovation Community)

**EIT funds (25%)**

**1**  
Non-EIT funds  
(cash co-financing)

**KCA**  
(KIC Complementary Activities)  
(Thematically linked education, research and innovation activities carried out by the EIT innovation Partner organisations)

**2**  
Non-EIT funds  
(private/partner, regional, national or other EU funds)

- 3** Investment attracted by Start-ups
- 4** Revenues Generated by KICs  
(Private/partner, regional, national, or other EU funds)



## INNOVATION DRIVEN RESEARCH PROJECTS

### EIT powered activities:

- Focus on commercialisation
- Facilitation of co-creation and cooperation
- Linking innovation players from different innovation ecosystems

→ successful with over 900 products put on the market that tackle global challenges

Transdisciplinary & multicultural teams working together on solutions to global challenges

New products, services, processes & business models for Europe





- **Country:** France
- **Description:** Artificial intelligence to improve type 1 diabetes management for children
- **Aim:** To develop an automated type 1 diabetes management solution specifically designed for children
- **EIT Connection:** EIT Health
- **Milestones:** Winner of the 2019 EIT Innovators Award
- **Funding raised:** € 16 million +





# EIT BUSINESS CREATION & ACCELERATION

## EIT powered activities:

- **Tailored support for entrepreneurs:** business coaching & mentoring, access to market and customers, access to new technologies and testbeds, access to talent, access to finance...
- **Sourcing start-ups and scale-ups:** venture and ideas competitions, referrals
- **Venture support** within thematic specialisations of each Innovation Community

→ **Very successful: over 2000 start ups supported which attracted 1.5 BEUR of external investment**

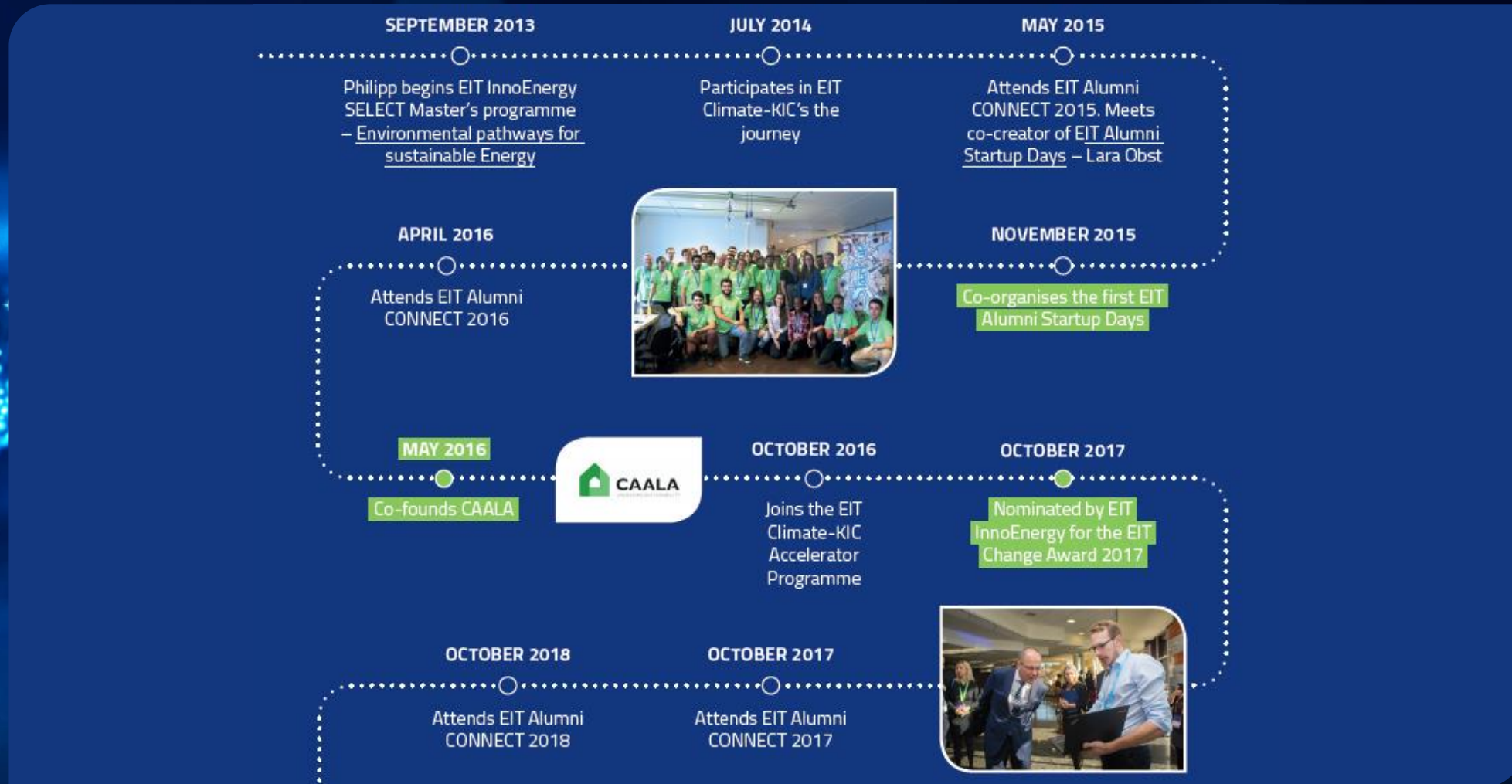


## Benefits for start-ups & scale-ups:

- Market orientation
- Shorter time-to-market
- Access to Europe's largest innovation network
- Proximity to finance sources



# ENTREPRENEUR'S JOURNEY THROUGH THE EIT COMMUNITY - PHILIPP HOLLBERG



# EIT EDUCATION

- EIT labelled master and doctoral programmes
  - International cooperation, industry involvement
  - Training on specific skills and competences
  - Mobility, internships and scholarships/ fellowships

→ over 60 universities participate

- Executive training and post-doctoral courses
- Continuous professional development courses/ modules
- Learning modules and MOOCs; alumni and outreach activities
- Innovation activities

→ Over 210 universities participate



Educating the next generation of entrepreneurs, innovators & change-makers



## EIT LABEL – FLAGSHIP EDUCATION INITIATIVE

- The EIT Label is a **quality seal** awarded to excellent master and doctoral programmes with strong focus on innovation and entrepreneurial education.
- EIT educational programmes are **carried out by universities & their faculties** aligned with the EIT specific learning outcomes and other quality criteria required for the EIT Label.
- A student graduating within the validity period of an EIT-labelled programme is awarded an **EIT Label certificate**.





# EIT ALUMNI: THRIVING COMMUNITY OF 6000+ ALUMNI



EIT Manufacturing and EIT Urban Mobility are currently setting up activities





# HORIZON EUROPE PREPARATIONS: FORGING SYNERGIES

## Horizon Europe

EIC	Cohesion Policy (ERDF/ESF)
European Innovation Ecosystems	InvestEU
European Research Council	Digital Europe Programme
Marie Skłodowska-Curie Actions	Erasmus+
Clusters under the Global Challenges & Industrial Competitiveness Pillar	European University Network Pilot
Sharing Excellence	Instrument for Pre-Accession Assistance
Missions	Creative Europe, European Defence Fund etc (new themes)

## Other EU Policies/Programmes



[eit.europa.eu](http://eit.europa.eu)



EITnews



EIT



European Institute of  
Innovation & Technology



EITeu



eiteu

The EIT is a body of the European Union

