

LS2 planning meeting

A.Tauro



TPC moved to UX25 cavern!



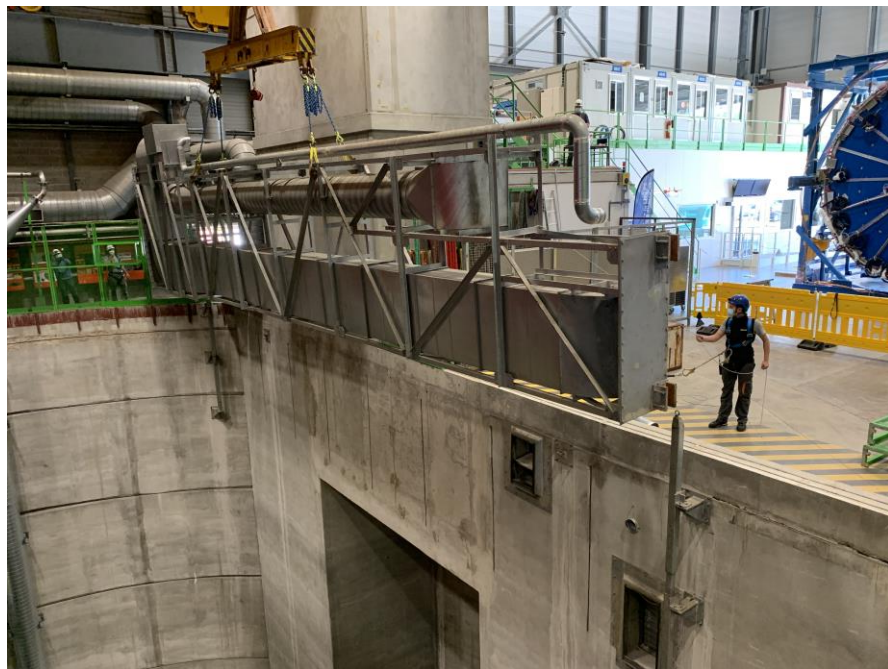
TPC transportation to UX25



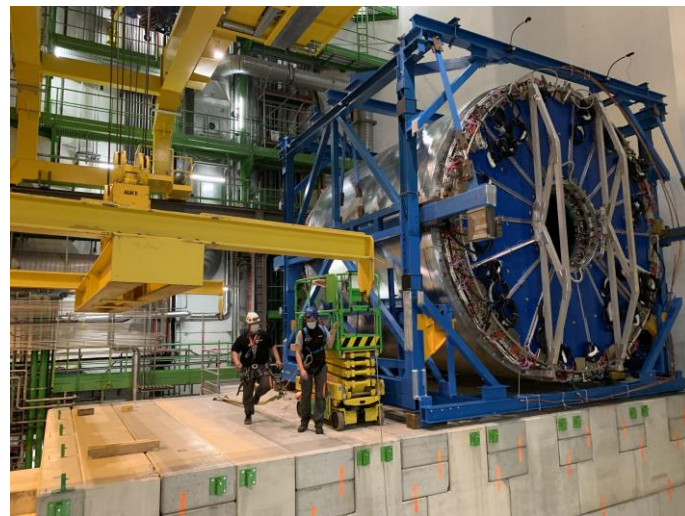
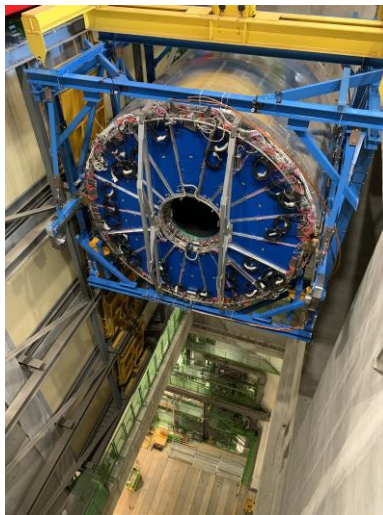
TPC transportation to UX25



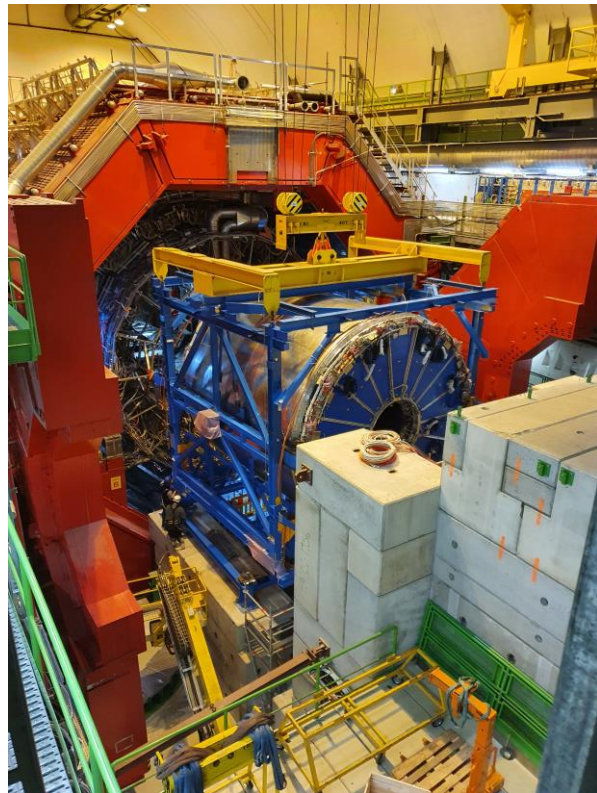
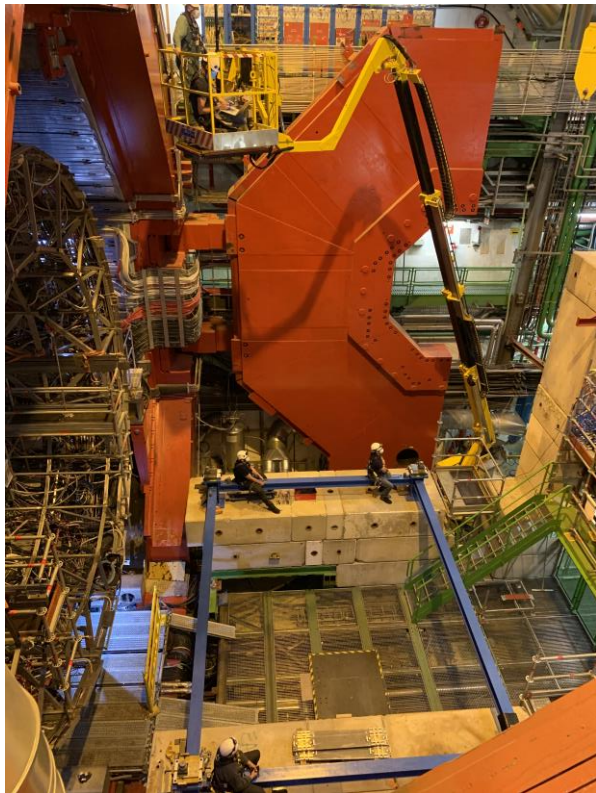
TPC transportation to UX25



TPC transportation to UX25



TPC transportation to UX25



Safety files

- HSE memo and instructions:
 - HSE Covid-19 directive EDMS 2370902
 - HSE Covid-19 directive contractors EDMS 2373120

DO/2020-103 5 May 2020

EDMS : 2370902

MEMORANDUM

From: Fabiola Gianotti, Director-General, *Fabiola Gianotti*
Doris Forstel-Wirth, Head of the HSE Unit *Doris Forstel-Wirth*

To: Extended Directorate,
Technical Conditions of the large LHC experiments,

Cc: SAPOCO Chair, President of SA, HSE-MB members, Chair of ACCU

Ref: COVID-19-related health and safety measures for the period covering the restart of CERN's activities

Date: 5th May 2020

The present memorandum defines the general principles and responsibilities regarding the COVID-19-related health and safety measures applicable during the period of CERN's gradual restart following CERN's safe mode in response to the COVID-19 pandemic. It is complemented by detailed instructions given in Annex 1, which will be regularly updated and regular measures for

05.05.2020 EDMS : 2373120 v.1

CERN Instruction on COVID-19 Health and Safety Measures for contractors

CERN has defined specific COVID-19 related health and safety measures (the "COVID-19 measures") applicable during the period of CERN's gradual restart following CERN's safe mode in response to the COVID-19 pandemic.

In accordance with the CERN Safety Policy, the COVID-19 measures aim at ensuring the best possible protection in health and safety matters of all persons, independently of their status, participating in the Organization's activities or present on its site. They take account of relevant regulations and recommendations issued by authorities or other competent bodies of CERN host States or the European Union or by international bodies, such as the World Health Organization.

The COVID-19 measures will apply as from the 5th of May 2020 until they're revoked. They will be regularly reviewed to take account of the evolution of the pandemic and of scientific and regulatory developments related to COVID-19.

Contractors that ensure that the COVID-19 measures are taken into account in the planning and execution of their activities at CERN and all relevant contractual safety documents shall be updated accordingly. Contractors shall ensure that their activities and personnel comply with the COVID-19 measures. Compliance shall be monitored by CERN in accordance with the applicable procedures, it being understood that compliance with the COVID-19 measures shall be without prejudice to compliance with all other applicable safety rules and procedures and with applicable national regulations, as the case may be.

1. Individual Responsibility

Each person present on the CERN site shall comply with COVID-19 measures set out hereunder and any instruction given by CERN in relation to their implementation.

1.1 Access to CERN

a) Contractor personnel shall come on-site only upon agreement with CERN.

1.2 Hygiene measures

- Masks¹ shall be worn indoors when other persons are present (shared workspaces) or can be encountered (public spaces). Masks shall also be worn outdoors if the physical distance of two metres cannot be respected. Masks are considered Personal Protective Equipment (PPE) and shall be used and disposed of in accordance with the relevant instructions.
- Hand-shaking and other close contacts with colleagues are not allowed;

¹ Unless otherwise specified, or where a risk assessment has concluded differently, masks to be worn shall be at minimum surgical masks of type 1 according to EN 14989 standard

CERN EP/PP/20-1.08 (v.01) - Released under Public
CERN COVID-19 Instructions, contractors, EN.pdf modified 2020-05-16 16:06

DO/2020-103 EDMS : 2370902

MEMORANDUM

De : F. Gianotti, directrice générale
D. Forstel-Wirth, chef de l'unité HSE

À : Directeur(e) et/ou
Coordonnateurs techniques des grandes expériences LHC

Cc : Président du SAPOCO, Présidente de l'Association du personnel,
membres de HSE-MB, Président de l'ACCU

Objet : Mesures de santé et de sécurité relatives au COVID-19 pour la période de reprise des activités du CERN

Date : 5 mai 2020

Le présent memorandum définit les principes généraux et les responsabilités concernant les mesures de santé et de sécurité relatives au COVID-19 applicables au cours de la période de reprise progressive des activités à la suite de la mise en mode sécurisé du CERN en réponse à la pandémie de COVID-19. Il est complété par les instructions détaillées figurant à l'annexe 1, qui seront réexaminées régulièrement pour tenir compte de l'évolution de la pandémie et des évolutions scientifiques et réglementaires. Une fois le redémarrage du CERN mené à bien, les mesures de santé et de sécurité

05.05.2020 EDMS : 2373120 v.1

Instructions du CERN concernant les mesures de santé et de sécurité relatives au COVID-19 pour ce qui concerne les entreprises contractantes

Le CERN a défini des mesures spécifiques de santé et de sécurité relatives au COVID-19 (c-à-d « mesures COVID-19 ») applicables au cours de la période de reprise progressive des activités à la suite de la mise en mode sécurisé du CERN en réponse à la pandémie de COVID-19.

Conformément à la Politique de sécurité du CERN, les mesures COVID-19 ont pour but d'assurer la meilleure protection possible en matière de santé et de sécurité de toutes les personnes, quel que soit leur statut, qui participent aux activités de l'Organisation ou sont présentes sur son domaine. Ces mesures tiennent compte des réglementations et recommandations pertinentes émises par les autorités ou d'autres organes compétents des États hôtes du CERN, ou encore par l'Union européenne ou par des organismes internationaux tels que l'Organisation mondiale de la santé.

Les mesures COVID-19 s'appliquent à compter du 5 mai 2020 et jusqu'à ce qu'elles soient abrogées. Elles seront réexaminées régulièrement pour tenir compte de l'évolution de la pandémie et des évolutions scientifiques et réglementaires liées au COVID-19.

Les entreprises contractantes doivent veiller à ce que les mesures COVID-19 soient prises en compte lors de la planification et de l'exécution de leurs activités au CERN. Tous les documents de sécurité contractuels concernés doivent être adaptés en ce sens. Les entreprises contractantes doivent veiller à ce que leurs activités et leur personnel se conforment aux mesures COVID-19. Le respect de ces règles sera vérifié par le CERN conformément aux procédures applicables, étant entendu que l'application des mesures COVID-19 est sans préjudice du respect des autres règles et procédures de sécurité ainsi que des réglementations nationales applicables, le cas échéant.

1. Responsabilité individuelle

Toute personne présente sur le domaine du CERN doit se conformer aux mesures COVID-19 énoncées ci-après, ainsi qu'aux instructions données par le CERN concernant leur mise en œuvre.

1.1 Accès au CERN

a) Le personnel des entreprises contractantes ne peut venir sur le domaine qu'avec l'accord du CERN.

1.2 Mesures d'hygiène

a) Le port du masque est obligatoire¹ en intérieur quand d'autres personnes sont présentes (espaces de travail partagés) ou peuvent être croisées (espaces publics). Le

¹ sauf indication contraire, ou si une évaluation des risques a abouti à une conclusion différente, les masques à porter sont au minimum des masques chirurgicaux de type 1 conformes à la norme EN 14989.

CERN EP/PP/20-1.08 (v.01) - Released under Public
CERN COVID-19 Instructions, contractors, FR.pdf modified 2020-05-16 16:06



EN versions

FR versions



7.8.2020

LS2 planning meeting

Safety files

- HSE memo and instructions:
 - HSE Covid-19 directive EDMS 2370902
 - HSE Covid-19 directive contractors EDMS 2373120
- **HSE FAQ: <https://hse.cern/content/faq-covid-19>**

Health and Safety

Hygiene

How do I eliminate my waste linked to COVID-19?

+

How should workstations that are used successively be cleaned (in labos or workshops for example)?

+

How often do we need to clean/disinfect workshops and laboratories?

+

For machines and devices, what disinfectant should be used to avoid damaging material, paint, plastic? How do I apply it?



+

What SCEM code should I use to order these bins?

+

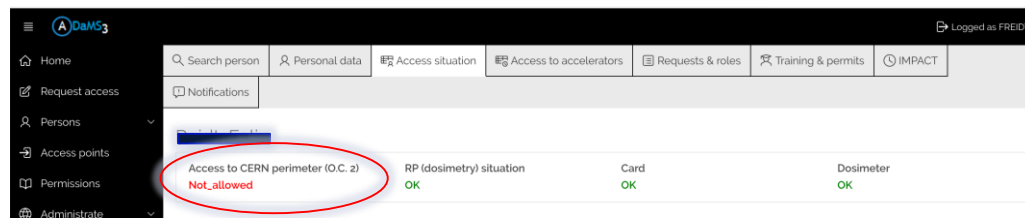
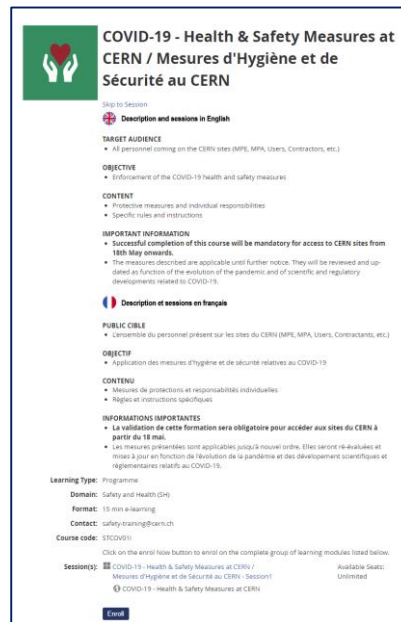
Safety files

- HSE memo and instructions:
 - HSE Covid-19 directive EDMS 2370902
 - HSE Covid-19 directive contractors EDMS 2373120
- HSE FAQ: <https://hse.cern/content/faq-covid-19>
- **ALICE specific instructions:**
 - **EDMS 2369007**

 		ALICE TC - Safety Office	
EDMS Document No: 2369007		Created: 06.05.2020	Page: 1 of 7
		Modified:	Rev. No.: 0.8
<p><i>Implementation of the General Safety Instructions and Guidelines related to the COVID19 Hazard for the ALICE activities</i></p>			
Prepared by: K. Barth, EP-AIO	Checked by: A. Augustinus, EP A. Tauro, EP C. Garglulo, EP	Approved by: W. Riegler, EP	
Distribution List ALICE Members			

Safety files

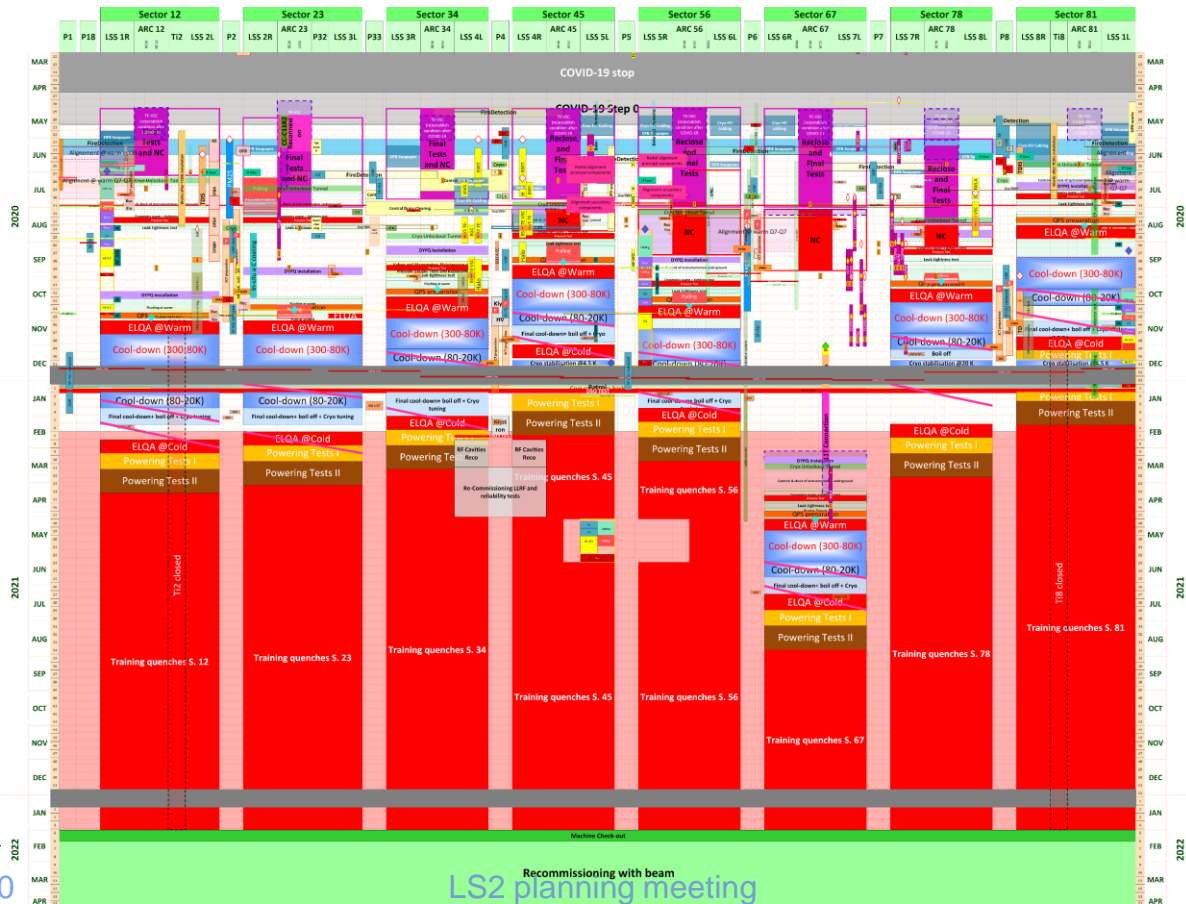
- HSE memo and instructions:
 - HSE Covid-19 directive EDMS 2370902
 - HSE Covid-19 directive contractors EDMS 2373120
- HSE FAQ: <https://hse.cern/content/faq-covid-19>
- ALICE specific instructions:
 - EDMS 2369007
- **Mandatory to come to CERN:**
 - **Covid-19 safety course**
<https://learninghub.cern.ch>
 - **Valid IMPACT**
 - **Being in ALICE white list (check O.C. 2 in ADAMS)**



LHC LS2 Baseline V3.0 12th June LHC-PM-MS-0018 v.3.0



RELEASED

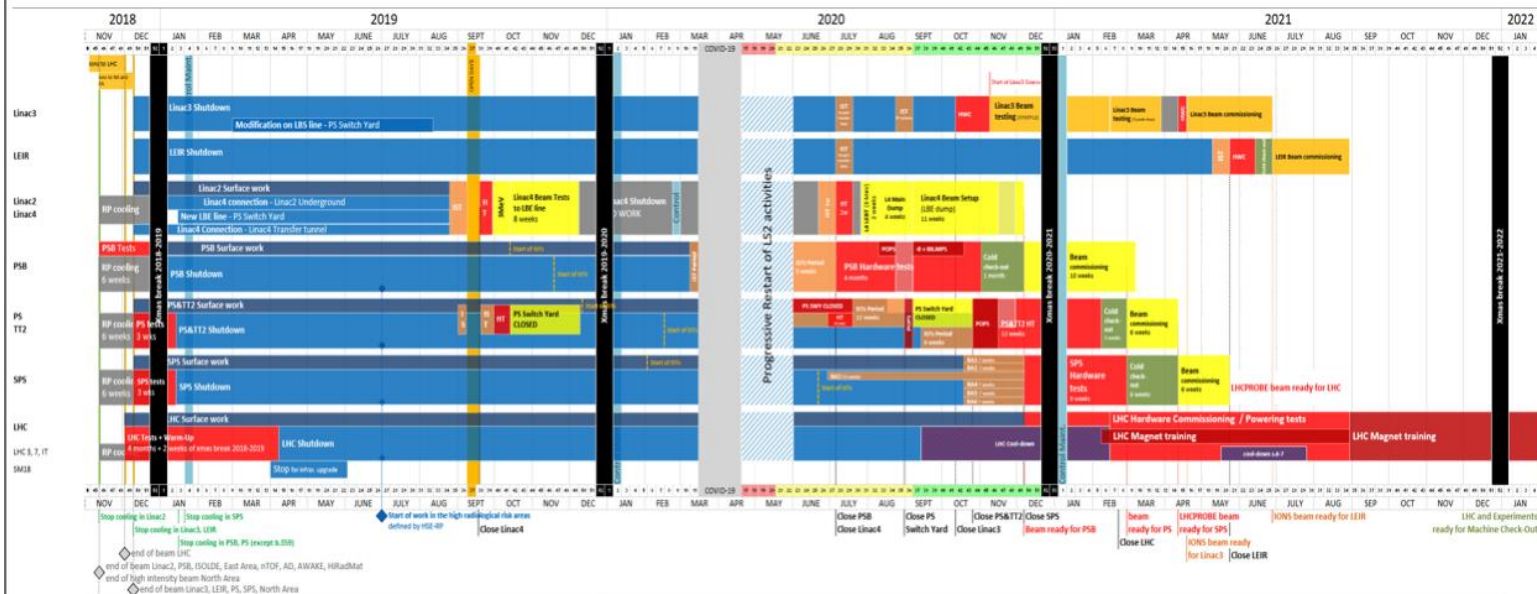


7.8.2020

LS2 planning meeting

12

LS2 Master Schedule v2.7 approved on 12th June 2020



ACC-PM-MS-0002 v.2.7

EDMS: 1687788

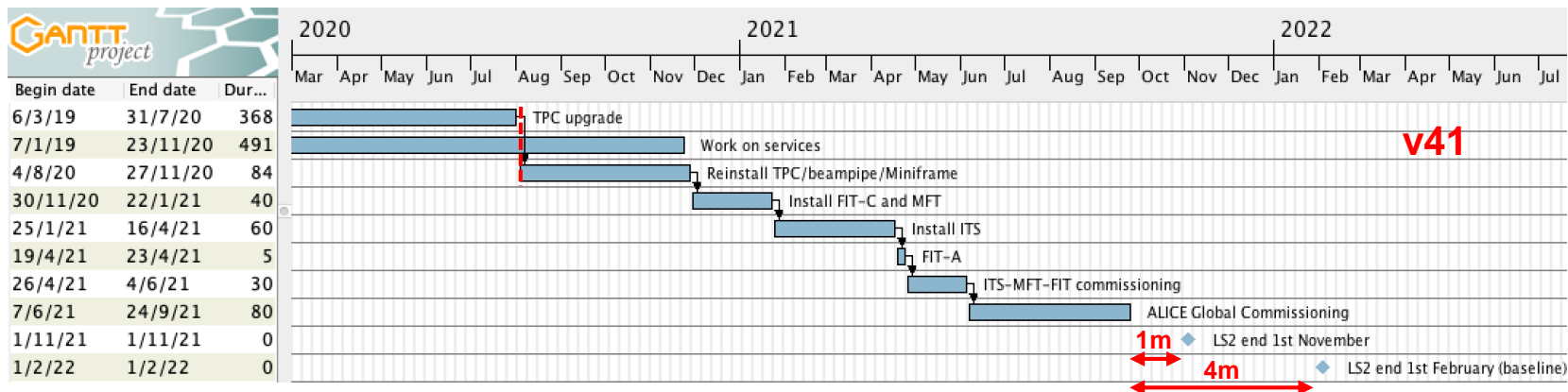


Update on the re-start plan
Frédéric Bordry
29th June 2020

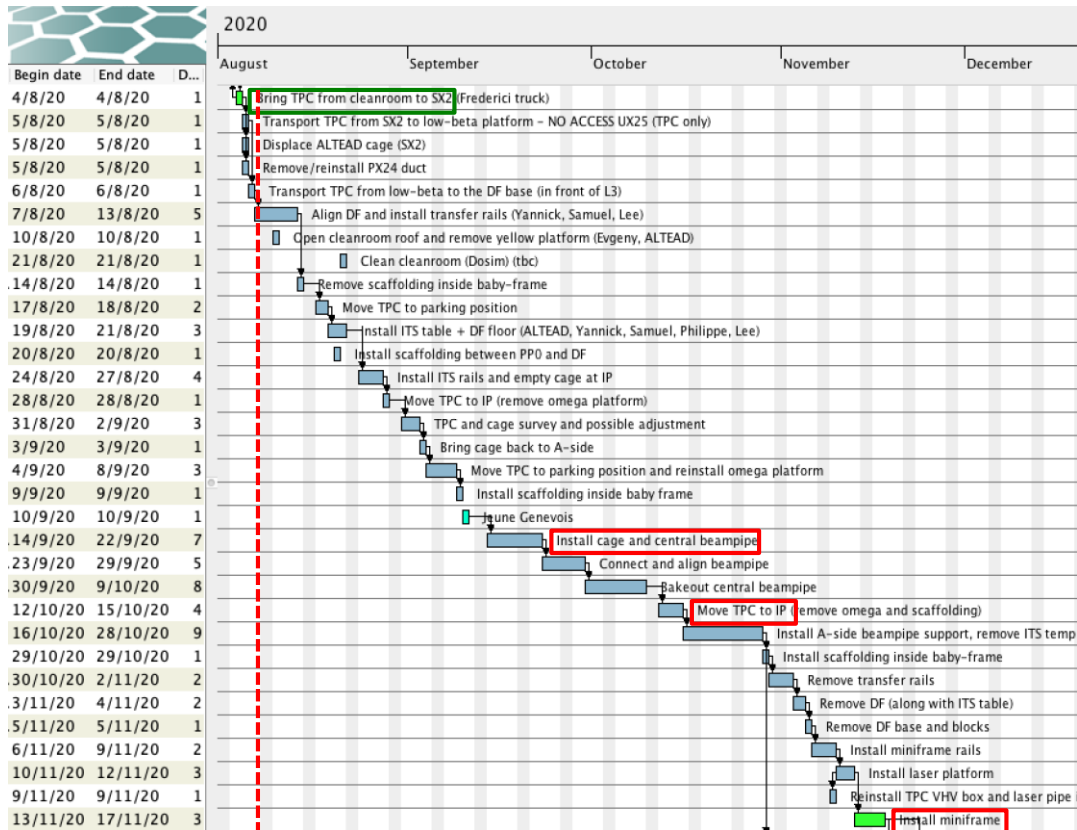
23

Detector installation sequence v41

- **Schedule v41:**
 - TPC moved to SX2 on August 4th
 - Cage insertion test will be done in the UX25 cavern (instead of SXL2 cleanroom)
 - 16w global commissioning at the end (7 June to 24 September 2021)
- RB24 beampipe reinstalled by end May 2021 → OK to inject low intensity beam by September 2021
- This plan foresees 1 and 4 months contingency with respect to the LS2 end date of 1st November 2021 and 1st February 2022 respectively



TPC/beampipe/Miniframe reinstallation sequence (v41)



Aug 4th – transportation TPC to SX2

Aug 5th – Sep 9th – reinstall TPC cage insertion test, TPC moved to IP, adjusted and put back to parking position

Sep 14th – Oct 9th install cage and central beampipe

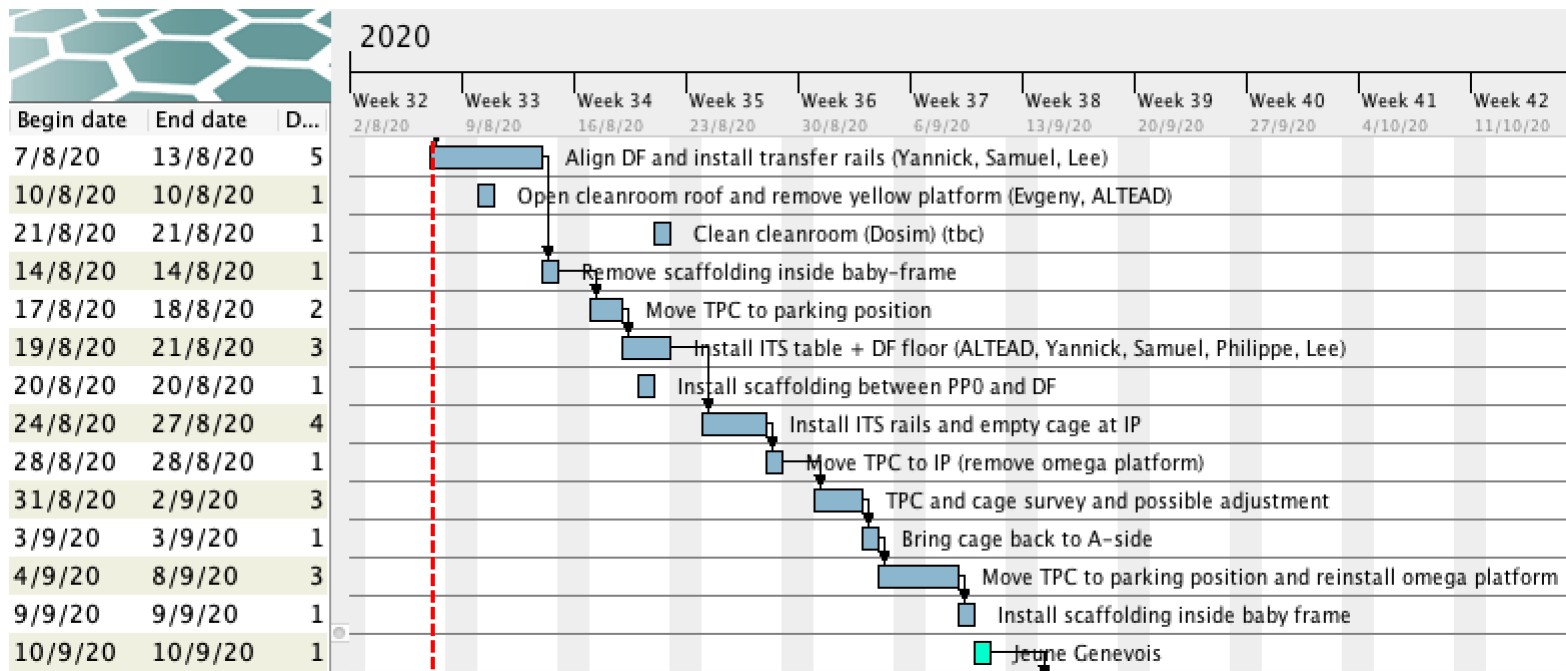
Oct 12th – 15th – move TPC to IP – start connection TPC

Oct 16th – Nov 12th – prepare miniframe installation

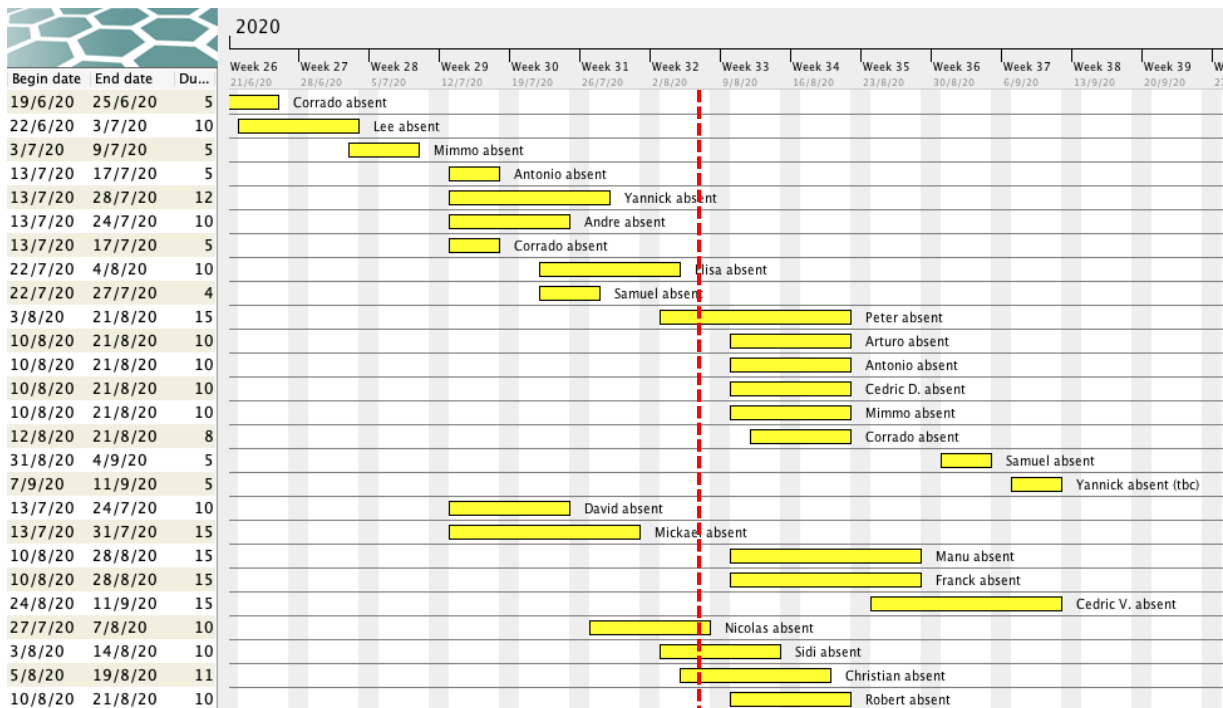
Nov 13th – 17th – reinstall miniframe



Zoom on coming weeks



Holidays

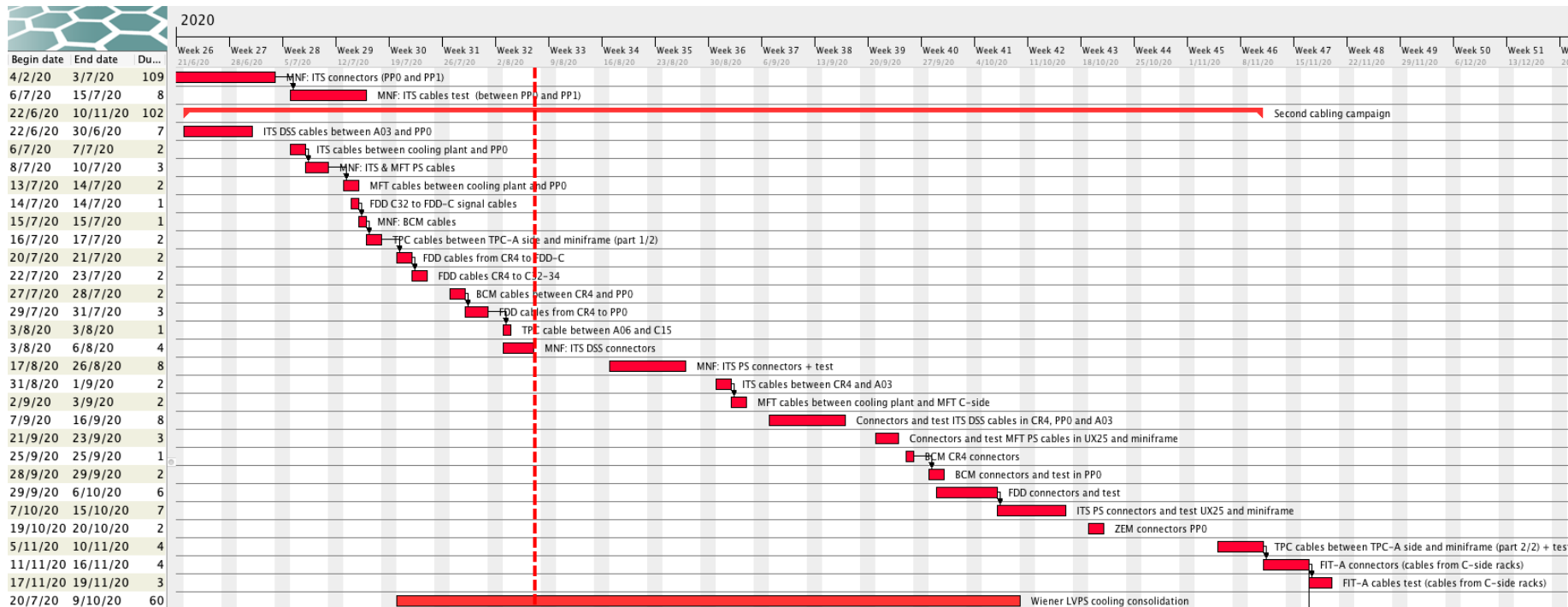


Key dates



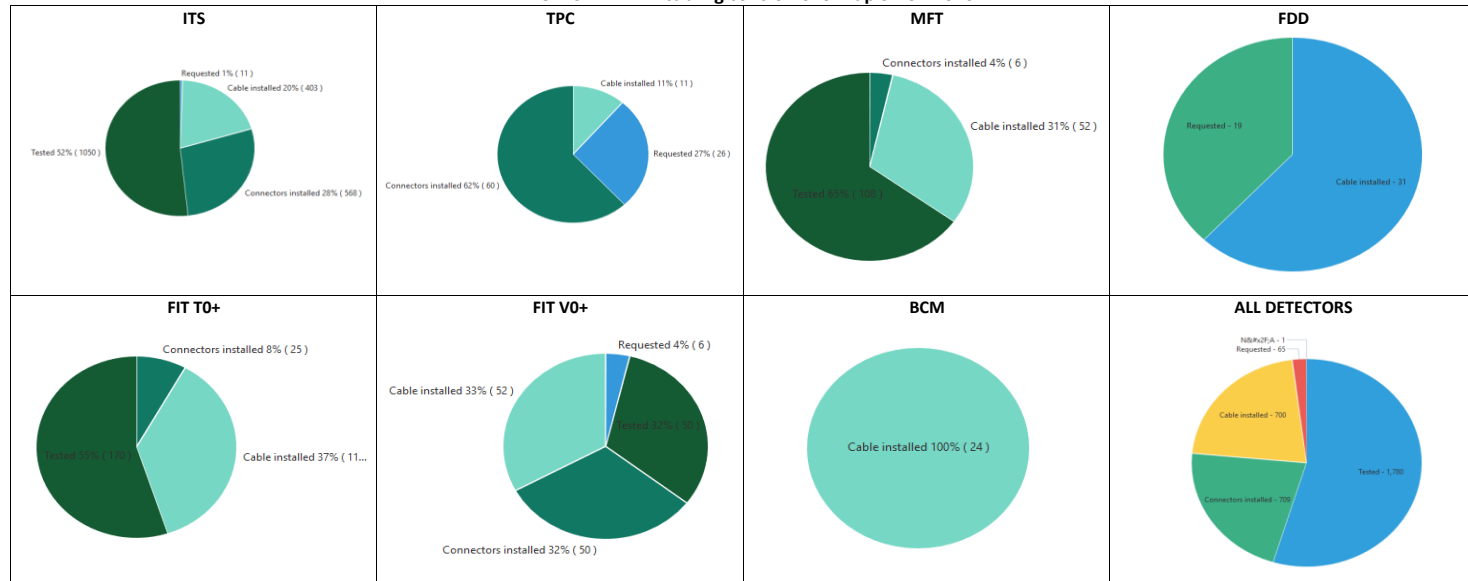
Activity	v41
Open cleanroom roof, cage insertion test	-
Move TPC to SX2	4 Aug
Install TPC (parking position)	5 Aug – 9 Sep
Install cage and central beampipe	14 Sep – 9 Oct
Move TPC to IP	12 – 15 Oct
Install Miniframe	13 – 17 Nov
FDD-C installation	4 – 15 Jan 2021
FDD-A installation	4 – 15 Jan 2021
MFT & FIT-C installation and checks	30 Nov – 22 Jan Disconnect MFT 26 Oct
ITS installation and checks	25 Jan – 16 Apr Disconnect ITS 12 Oct or 26 Oct (+2w installation)
FIT-A installation	19 – 23 Apr
ITS & MFT commissioning time	1 ½ months (6w)
ALICE global commissioning time	3.5 months (16w)
End of LS2 – stop UX25 access - baseline (contingency baseline option)	1 Feb 2022 (4 months)
End of LS2 – stop UX25 access - option 1 (contingency option 1)	1 Nov 2021 (1 month)

Cabling planning



Cabling progress

ALICE LS2 - EN-EA cabling control follow-up 31-07-2020



3254 cables in total:
 Tested: 55%
 Connectors wo test: 22%
 Cable only: 22%
 Cables to be installed: 2%

EN-EL interventions

- 18kV, 3.3kV and LV network maintenance: 20-24 Jan 2020 – Done
- AUG P2: Monday 27 Jan 2020 – Done
- Auto transfer test: 20 Jul 2020 → Done
- Test secours (10 min at 6:00 AM): 30 Jul 2020 → Done
- Maintenance 66kV transformer (P2): 3-7 Aug 2020 → Done – will be repowered on Mon 10 Aug
- AUG Meyrin (zone administrative): 4 Sep 2020 (tbc)

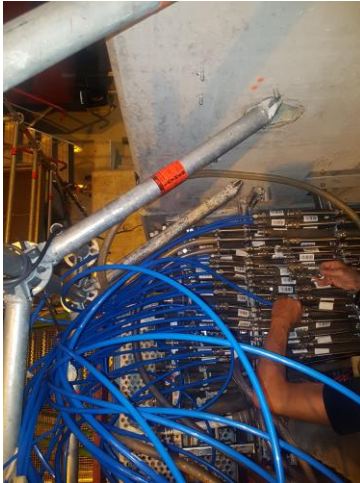
Optical fibers (EN-EL)

- Done:
 - Installation and test **TPC** fibers between CR4 and CR1
 - Installation and test fibers for **IT** (for upgraded network) from CR2 starpoint to CR1 and to CR3
 - Procurement 2 x **FDD** optical cables (requested in March 2020) → fibers ordered but not yet received
 - Optical measurement fibers SR2-SX2
- To be done:
 - Test **HMPID** fibers → Giacinto to assess situation
 - Installation 6 trunk cables between IT1-IT2 (CR0) → 1st week Nov
 - Cleaning **TRD trigger fibers** connectors and replacement of damaged ones → Anastasia to assess situation
 - Installation TPC optical fiber in the cavern between A and C-sides → September
 - Unfold and connect **ITS** and **TPC** trunk cables → after Miniframe installation in November



ITS and MFT inox pipes

- Things to be done:
 - Cross check correct labels are installed on both extremities of pipes → done
 - Installation of 8 MFT pipes (MFT RO crates)
 - P test of all lines → ongoing (Philippe, Cedric)
 - Connections to ITS cooling plant will be done by Rampower after installation of ITS cooling plant



EN-CV interventions

- **Big maintenance:**

- SF: from Nov 2019 to mid Jan 2020. NO impact on ALICE as both magnets will be OFF – done
- UW: **stop UX mixed water** for 2 days in week 41/2019 (October) – Tue 8 and Wed 9 Oct – done
- SU: various small perturbations + 1 day **stop all cooling UX** + 1 day **stop all cooling SXL2** in week 16/2020 (April) – **not done**

- **Small maintenance:**

- UW: from w34 to w37 2020. **Stop mixed water UX** for 1 day in week 37/2020 (September).
- SF+SU: weeks 44-47/2020: cleaning towers (stop SF 1 week) + 1 day **stop all cooling UX** + 1 day **stop SXL2 cleanroom ventilation**

- **Ventilation:**

- ARC: done
- SG2:
- UX25 cavern:
- MCH and MTG:
- L3: replace extractor → done w31/2020 (cut flammable gas)
- ITS: → will be done before end October

CR3 status (A.Augustinus)

- February
 - Modify water circuit (add TA valves CR3 and CR4) – kept DCS up and running – DONE (10.02 – 21.02)
 - Additional rack installed for extension of main network starpoint outside CR2
 - Arrival of new racks (25.02)
 - Installation 1st row of racks (26.02)
- March, April, May
 - *COVID closure*
 - Arrival of new servers (28.04, originally foreseen end of March)
 - Installation of the servers in the new racks – DONE (finished 15.05)
 - Remove TOF cluster – DONE (26.05), last racks removed – DONE (28.05)
- June
 - Installation of 2nd row of new racks - DONE (03.06)
 - Re-installation TOF cluster – DONE and tested (08.06)
 - Installation network fibres for network – DONE (25.06)
- July – August – September
 - Adapt electrical installation for (extended) starpoint outside CR2 – DONE week 28
 - Reconnection new racks to electricity – DONE week 30
 - Installation of network infrastructure (some network interruptions to be foreseen, details to be defined with IT-CS) – dates t.b.c.
 - Temporary, network solution available, start commissioning new servers in August
 - Migration from old servers to new servers (first central systems, then detector systems)
- October – November
 - Removal of old servers and last old racks

Racks status

- Racks currently powered on:
 - HMPID: I01, I02
 - PHOS-CPV: A16, A17
 - CTP: C21, C22, C24, C25, C26, C27 (CTP) (and VME crates on)
 - MCH: C08, C09, C10, C11, C36, C37, C38, C39
 - TOF: O03, O04, O05, O30, O31, O32, I03, I04, I05, I30, I31, I32
 - TRD: O06, O08, O26-29, I06, I08, I26-29, C16-19, C29
 - Dcal, EMcal: A14, O12
- Detectors can be powered, compatible with current activities inside L3

Consolidation Wiener LVPS

- 193 water cooled power supplies in total (LV and VME)
- 22 LV supplies done (MCH, TRD)
- Rework in batches (~15 units/week), to be started next week (wk 32):
 1. Disconnection and deinstallation → detectors
 2. Conditioning → ALTEAD + P2tech
 3. Transport to EN-EA (Meyrin)
 4. Rework and test → EN-EA + P2tech (Evgeny and Philippe)
 5. Transport to P2
 6. Reinstallation → detectors
- Preliminary plan is drafted, first batches (TRD) are prepared. All supplies would be done by mid-October
 - Andre will contact each detector to establish a detailed planning

	LV	VME
CTP		11
EMC	8	
FIT (AD,T0,V0)		6
HMPID		2
MCH	17	
MTR	8	2
PHOS	9	1
Spare VME		2
TOF		3
TPC	22	
TRD	101	1
	165	28



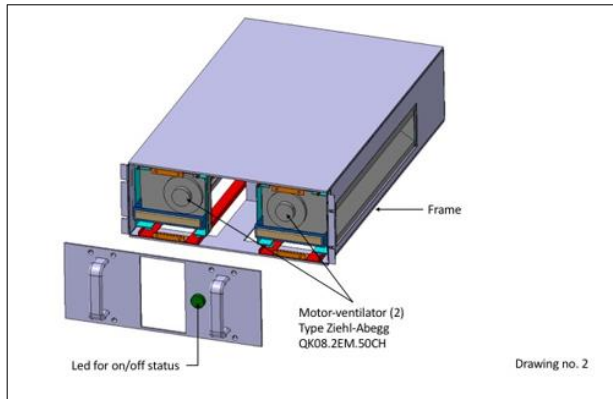
6 modules Wiener LVPS



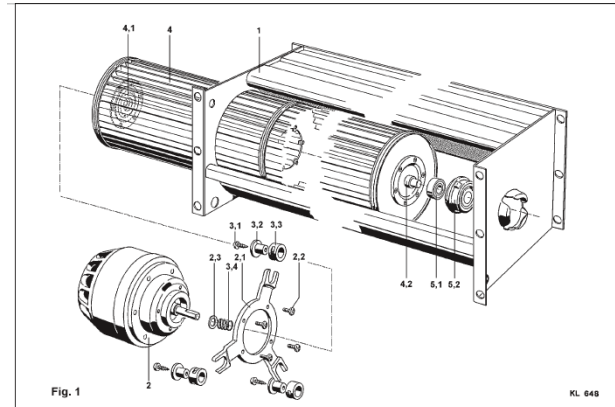
TRD batch already prepared

New rack turbines

- All 85 units (200kCHF) ordered: <https://edh.cern.ch/Document/SupplyChain/MAG/8289388>
- Technical specifications: EDMS 1963491
- ALICE units will be made available in October 2020
- Installation immediately afterwards, transparent for users (ALTEAD + P2 tech.)



Ventilation unit front view



Pluggable motor

IMPACT list (1/2)

Activity	Status	Resp. Group	Facility	System	Title
158572 ↓ →	In progress	EP-DT-FS	Alice	GAS	ALICE TPC Gas power supply work
158552 ↓ →	In progress	EP-UAI	Alice	HLT	CR0 - network installation and tests
158493 ↓ →	In progress	EN-CV-LHC	Alice	SPD	MFT - Visite sur site pour travaux fin aout
158384 ↓ →	In progress	EP-DT-FS	Alice	GAS	ALICE TPC pompe demontage et transport
158352 ↓ →	In progress	EP-AID-DA	Alice	Other	TPC descent FB live repérage and recording
158325 ↓ →	Approved	EN-HE-HEM	Alice	Lifts	PX24 L3 AUGUST LIFT MAINTENANCE
158324 ↓ →	Approved	EN-HE-HEM	Alice	Lifts	PX24 ALICE AUGUST LIFT MAINTENANCE
158113 ↓ →	In progress	EP-UAI	Alice	Muon Tracker	ALICE MUON TRACKING: work in cavern (from 03/08 to 14/08)
158089 ↓ →	In progress	EP-UAI	Alice	DAQ	Installation of DAQ services
157869 ↓ →	In progress	EN-EA-DC	Alice	Tech. Infrastructure	EN-EA CAD Support
157698 ↓ →	Approved	EP-UAI	Alice	TPC	TPC laser maintenance
157668 ↓ →	In progress	EP-AIO	Alice	Other	MFT crate fit check C-side
156968 ↓ →	In progress	EP-UAI	Alice	TPC	TPC Upgrade. Preparation for TPC installation. Heat screen work (C...
156960 ↓ →	In progress	EP-UAI	Alice	TPC	TPC/TRD installation and maintenace in LS2
156563 ↓ →	In progress	EP-UAI	Alice	TPC	TPC Upgrade in the SXL2 cleanroom (Covid Restart Phases 1 and 2)
156549 ↓ →	Approved	BE-ICS-AS	Alice	S - General Safety	Annual Maintenance Red Emergency Phones (Point 2 - ALICE)
156519 ↓ →	In progress	EN-EA-AS	Alice	Tech. Infrastructure	ALICE - Cabling activities EA - connectors assembly
156248 ↓ →	In progress	EN-EA-AS	Alice	Tech. Infrastructure	ALICE - Cabling activities EA - tests HV cables TPC miniframe-UX25...
155550 ↓ →	In progress	EP-AIO	Alice	DAQ	CR1 Network Equipment reception
155340 ↓ →	In progress	EP-AIO	Alice	Other	Miniframe modification TC technicians

IMPACT list (2/2)

Activity	Status	Resp. Group	Facility	System	Title
154732 ↓ ⇒	In progress	EP-UAI	Alice	Other	the data analysis
154510 ↓ ⇒	In progress	EP-AIO	Alice	Other	TSO access to bldg 301/160/161
154490 ↓ ⇒	In progress	EP-UAI	Alice	TRD	TRD Wiener PSUs labelling and disconnection
154395 ↓ ⇒	In progress	EP-UAI	Alice	TPC	CR1 access during TPC Upgrade in the cleanroom (Covid Restart Ph...
154283 ↓ ⇒	In progress	EP-ADE-TK	Alice	X - Experimental and...	FASER Tracker Plane Commissioning
153997 ↓ ⇒	In progress	EP-UAI	Alice	Other	MFT activities (Covid Restart Phase 1)
153825 ↓ ⇒	In progress	EN-EA-AS	Alice	TRD	Montage/démontage échafaudages en UX25.
153782 ↓ ⇒	In progress	EP-DT-EO	Alice	ITS (all)	Cage interface verification in the SXL2 (Covid Restart Phase 1)
147211 ↓ ⇒	In progress	EN-SMM-ESA	Alice	Other	ALICE - SURVEY LS2 - 2020
147068 ↓ ⇒	In progress	EP-AID-DC	Alice	DCS	DCS/DSS support interventions LS2 (2020)
146929 ↓ ⇒	In progress	SMB-SSL-CS	Alice	Other	Nettoyage caverne Alice et sanitaires
145419 ↓ ⇒	In progress	EN-HE-HH	Alice	Lifting equipment	Activites transport UX25
130410 ↓ ⇒	In progress	EP-AID-DA	Alice	DAQ	CR1 FLP team access
130340 ↓ ⇒	In progress	EP-UAI	Alice	TPC	TPC Upgrade in the SXL2 cleanroom (CORE)
122717 ↓ ⇒	In progress	EP-AIO	Alice	Other	RP Survey ALICE Cavern during LS2 2018-2021
107531 ↓ ⇒	In progress	EP-DT-EO	Alice	Other	P2 coordination and technicians activities
11042 ↓ ⇒	⚠ In progress	EP-AIO	Alice	ITS (all)	Cavern supervision

Other activities

2020:

- Renovation PX24 access system (PAD-MAD): w33-34 (10-21 Aug) → access with CSA guardian and “access” briefcase
- Renovation PM25 access system (PAD-MAD): w41-43 (5-23 Oct)
- LASS functional test: ~~no access to UX25 on Friday 30 Oct 2020 whole day (weekend 31 Oct /1 Nov as contingency)~~
- LASS global verification of entire LHC: ~~1 day no access to UX25 (date tbc)~~
- BIW test: ~~no access underground on 5 and 6 Oct 2020 from 18:00 to 00:00~~

2021:

- For powering permit: w1 2021 (tbc) (needed to start LHC powering test)
- For RF recommissioning LSS4: w7 2021
- For powering permit, following UPR53 installation: date tbd
- For beam permit: date tbd
- LHC sector test (beam through ALICE): ~~no access to UX25 from 26 to 29 March 2021~~

Day-by-day sequence w32



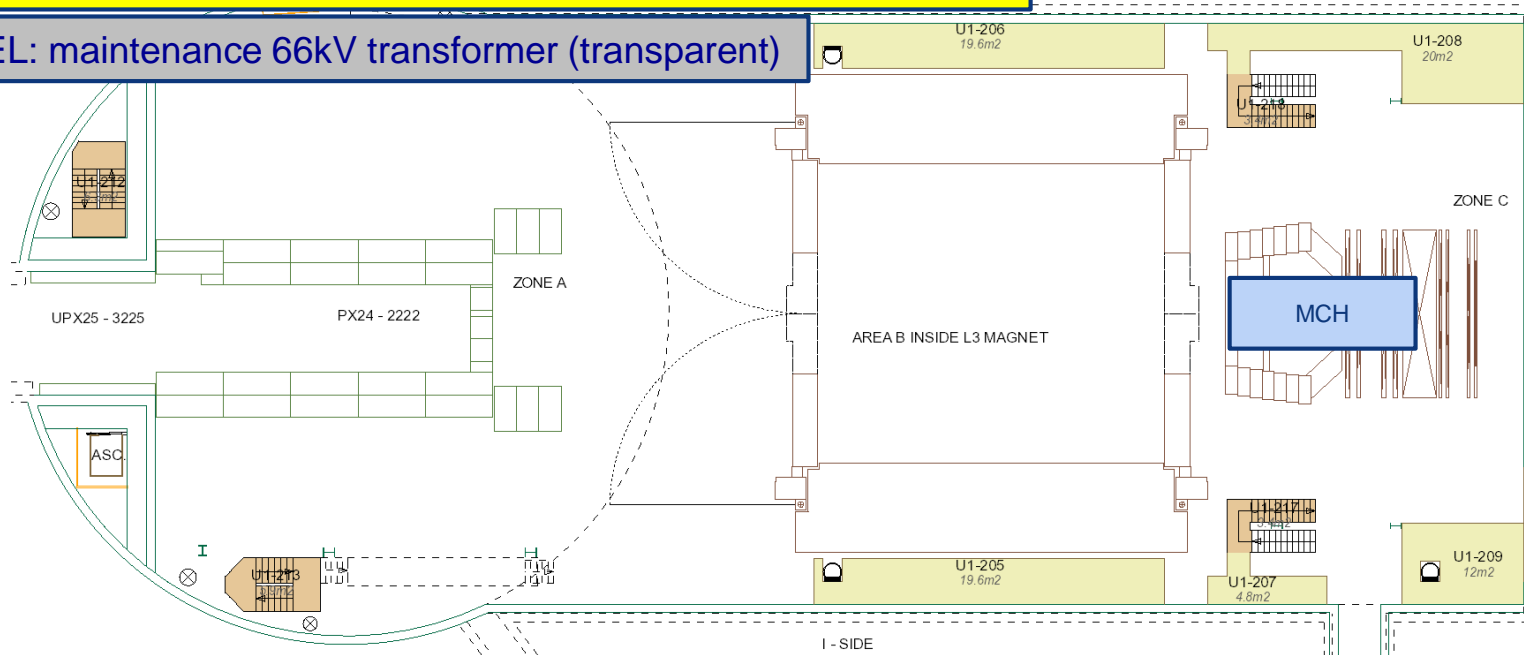
UX25 activities w32 – Mon 3 Aug 2020

Replacement PM25 lift (until 4 August) → LHC access via ALICE (PX24)

IR-ECO: preparation for Facebook live (install cameras) at 9:30

Fence off P2 parking areas in view of TPC transportation (Franck)

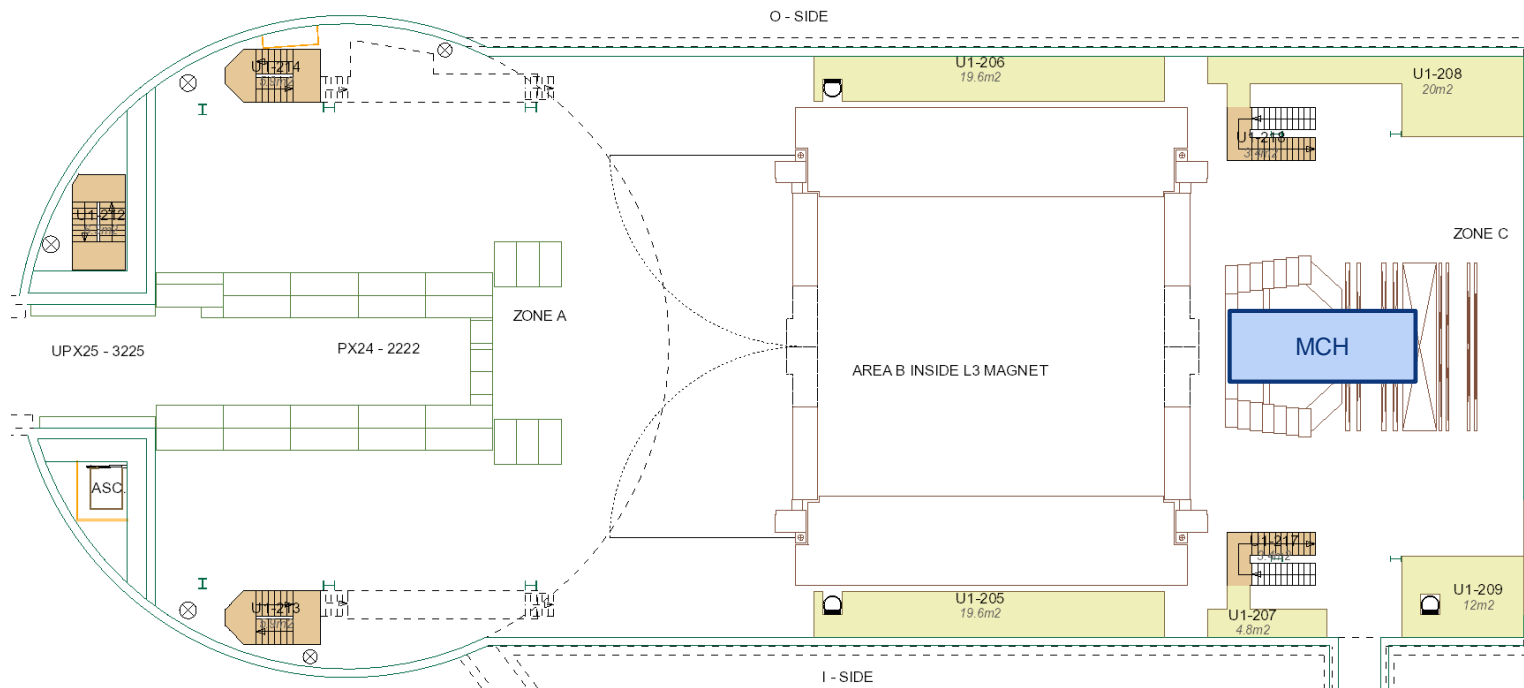
EN-EL: maintenance 66kV transformer (transparent)



UX25 activities w32 – Tue 4 Aug 2020

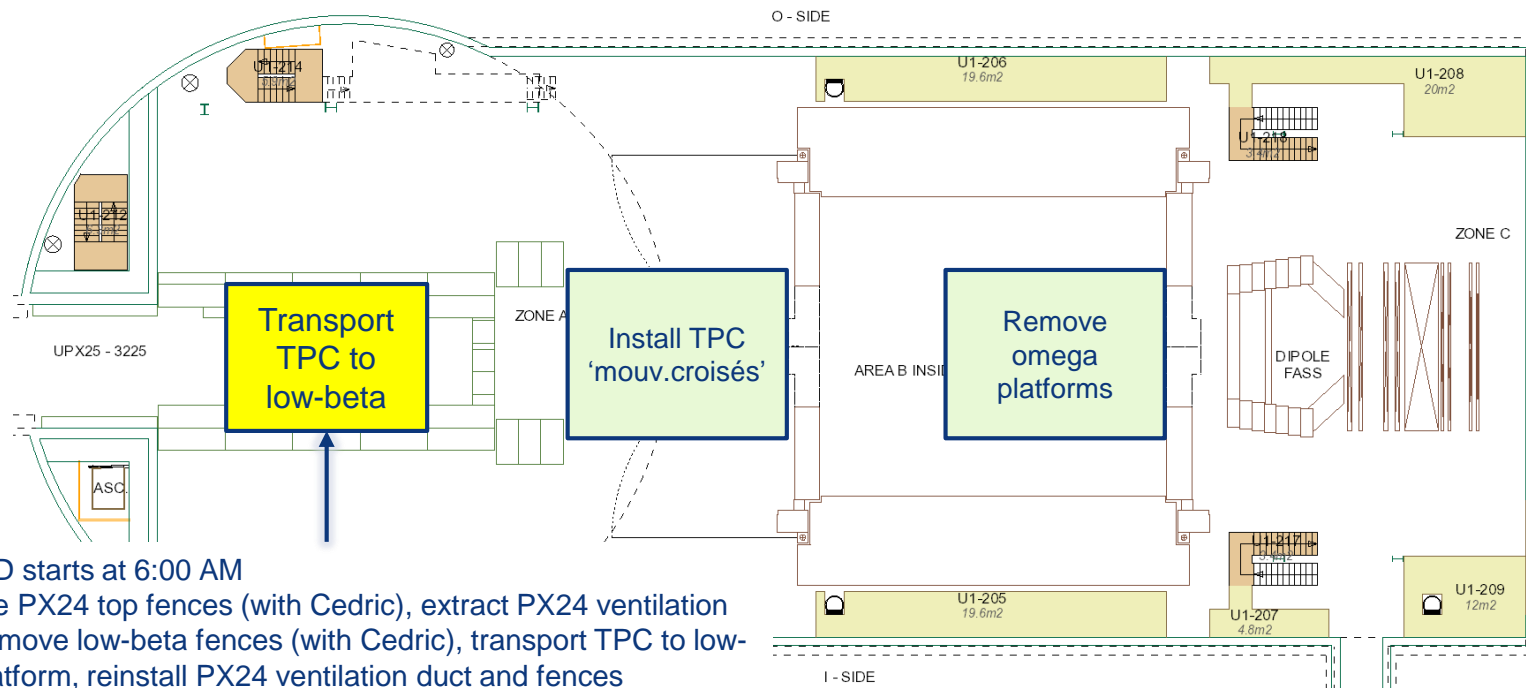
Cleaning cavern (Topnet): 13:00 to 15:00

LHC tunnel access: switch back to access via PM25 lift (PM)



UX25 activities w32 – Wed 5 Aug 2020

No access to UX25 entire day (except transport, P2tech and TPC)



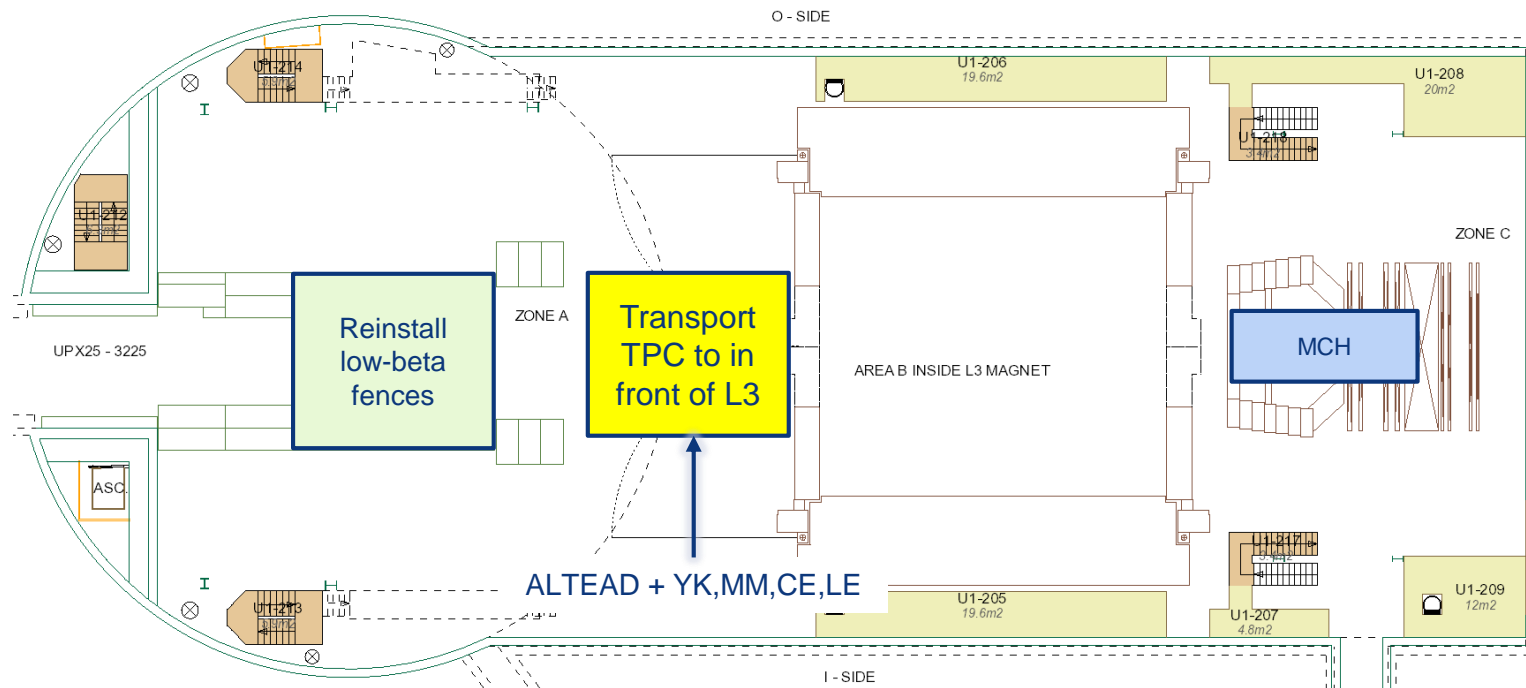
ALTEAD starts at 6:00 AM

Remove PX24 top fences (with Cedric), extract PX24 ventilation duct, remove low-beta fences (with Cedric), transport TPC to low-beta platform, reinstall PX24 ventilation duct and fences

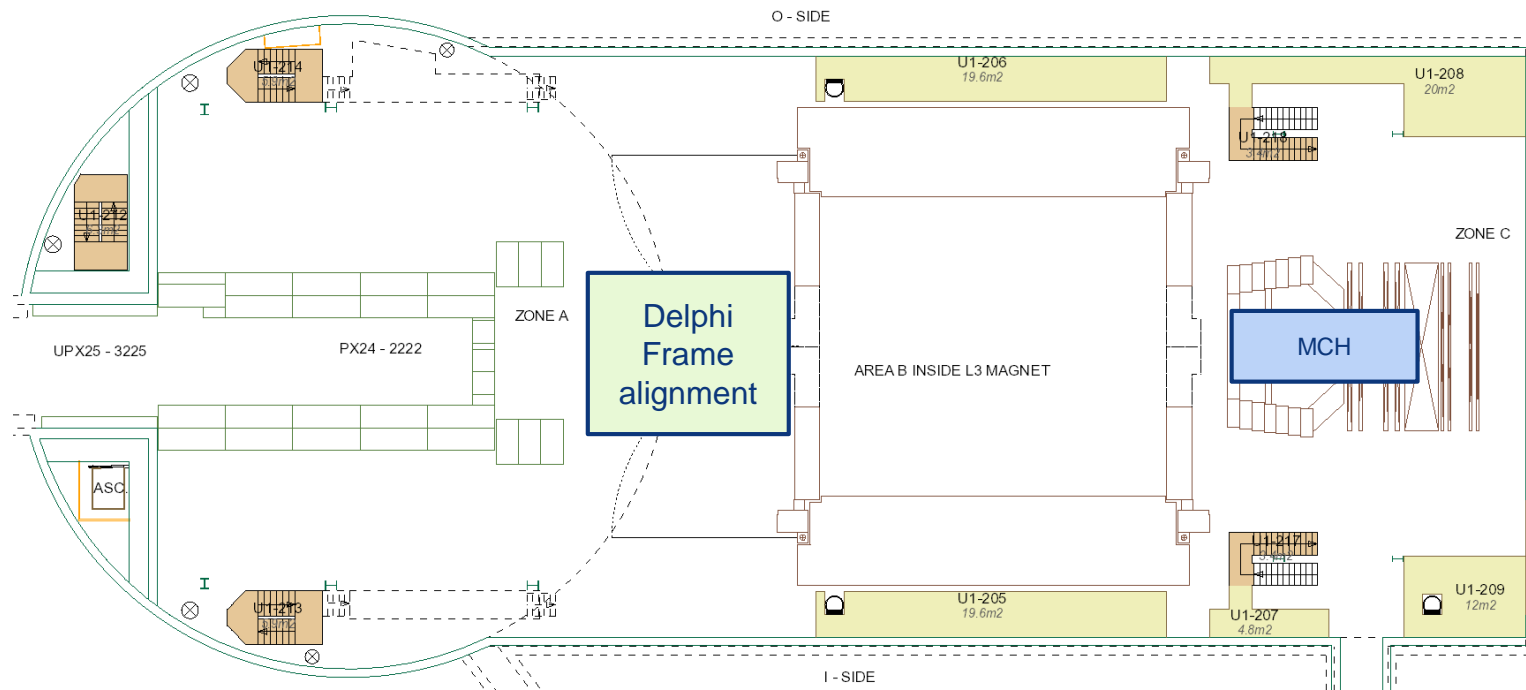
UX25 activities w32 – Thu 6 Aug 2020

No access to UX25 – A-side

EN-EL: cabling new IT starpoint in SX2

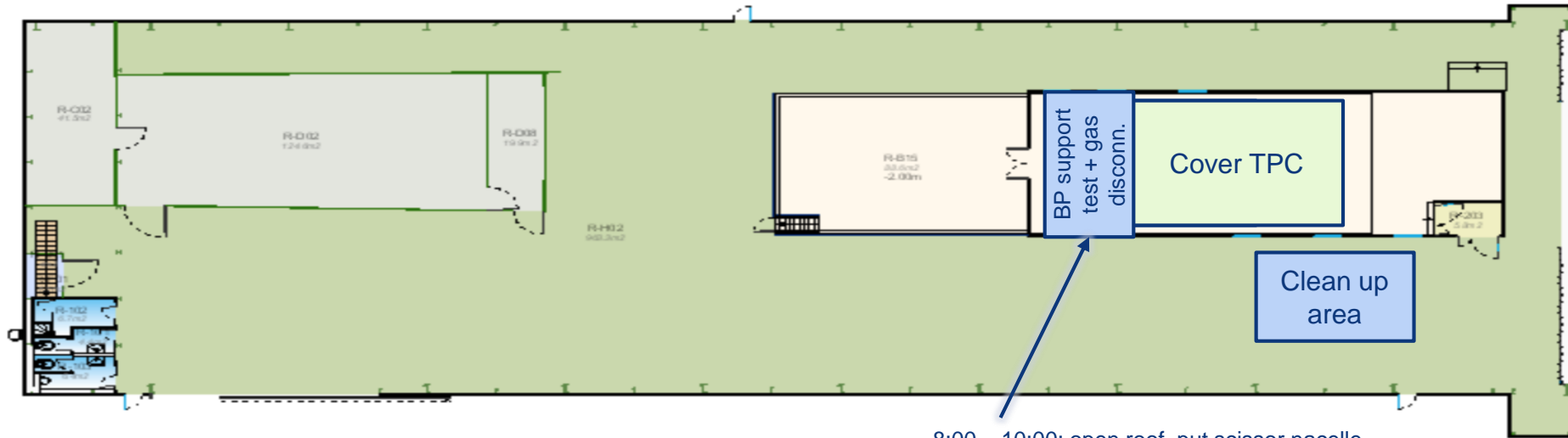


UX25 activities w32 – Fri 7 Aug 2020



SXL2 activities w32 – Mon 3 Aug 2020

Stop cleanroom ventilation (8:00 AM): Christian to call Dominique

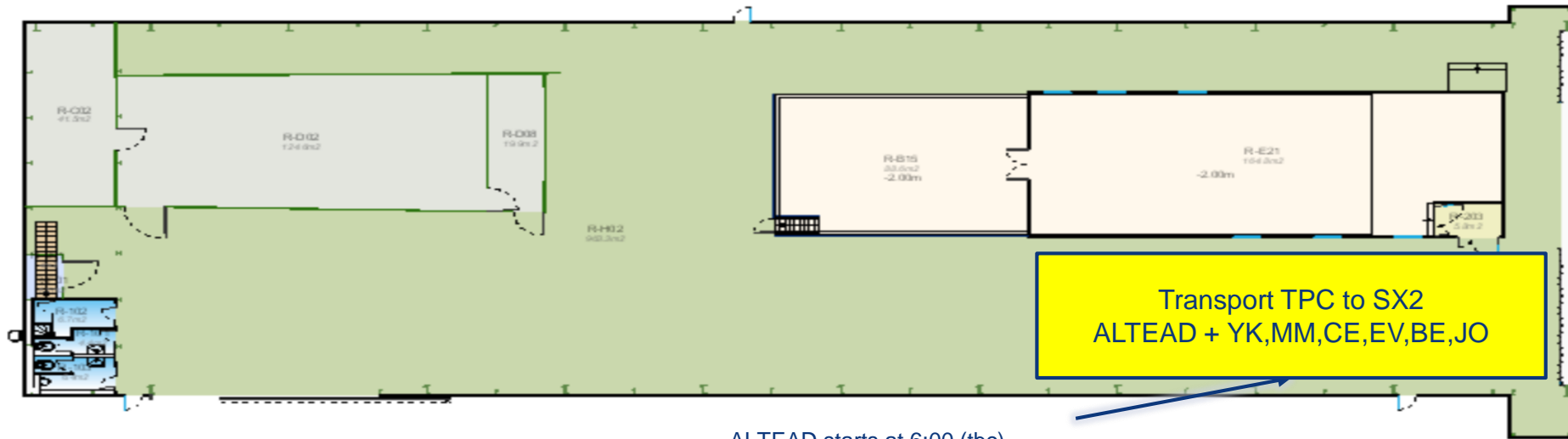


8:00 – 10:00: open roof, put scissor nacelle

10:00 – 12:00: fix A-side beampipe support to TPC (integration test) (Lee, Tariq)

14:00 – 16:00: disconnect TPC drift gas (Chilo)

SXL2 activities w32 – Tue 4 Aug 2020



ALTEAD starts at 6:00 (tbc)

Frederici truck arrives at 8:00 AM

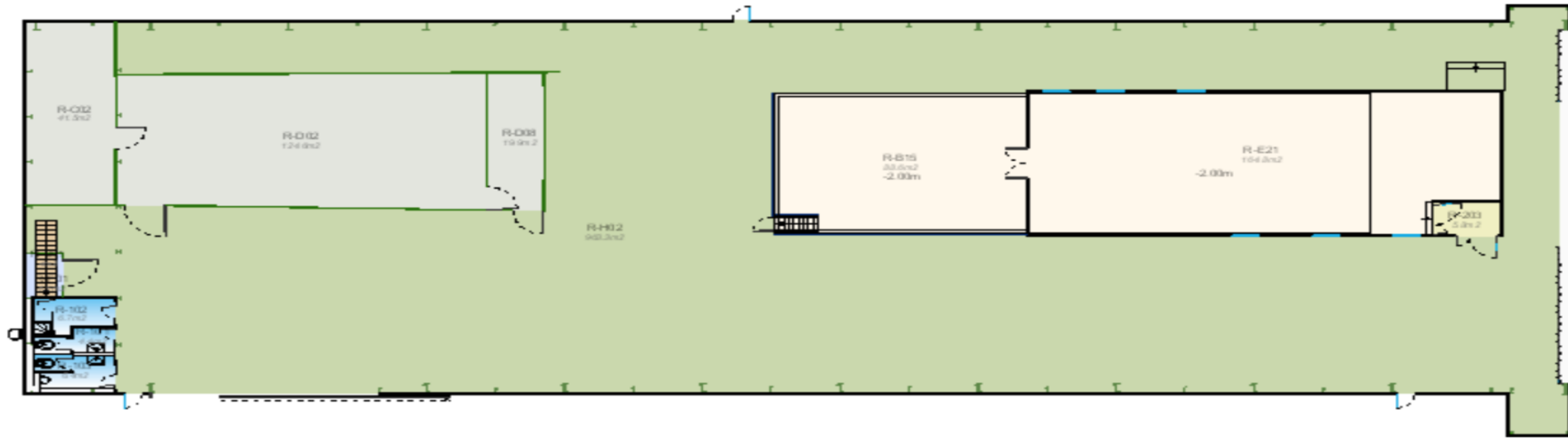
Remove roof back panels, extract TPC, transport TPC to SX2, unload TPC in SX2

Extract also 2 HV racks and Heinzinger power supply

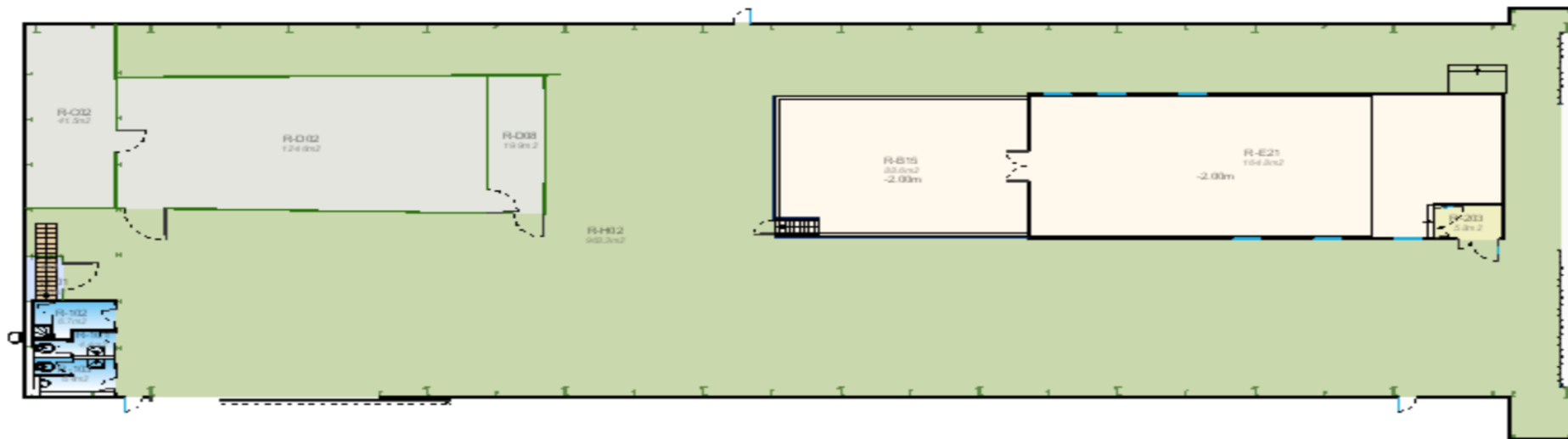
Move laser to a better position

Remove 'mouv.croisés' (Evgeny)

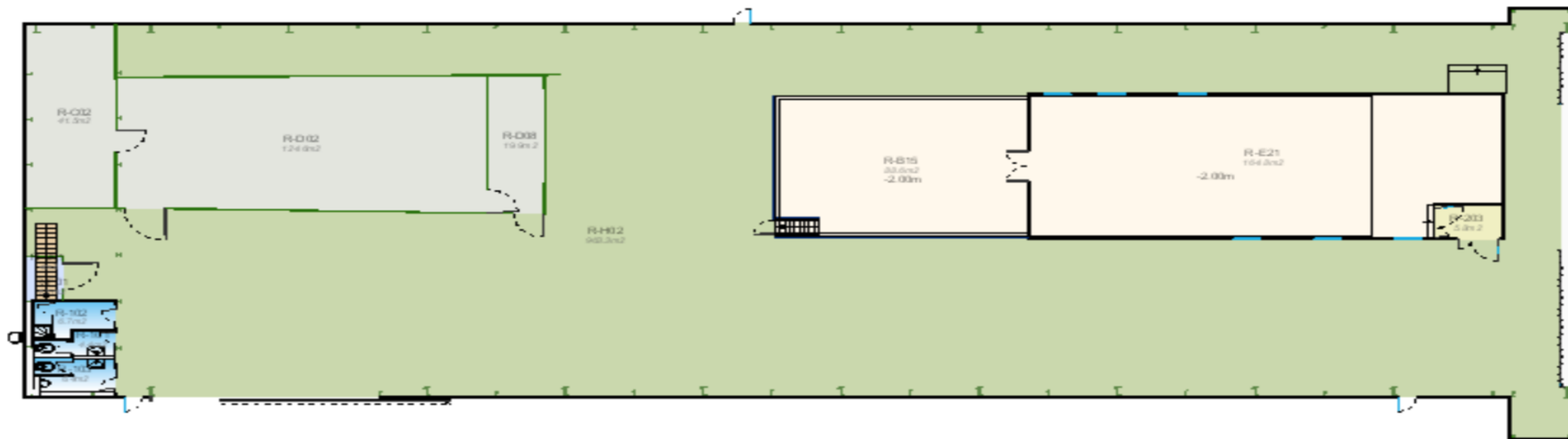
SXL2 activities w32 – Wed 5 Aug 2020



SXL2 activities w32 – Thu 6 Aug 2020

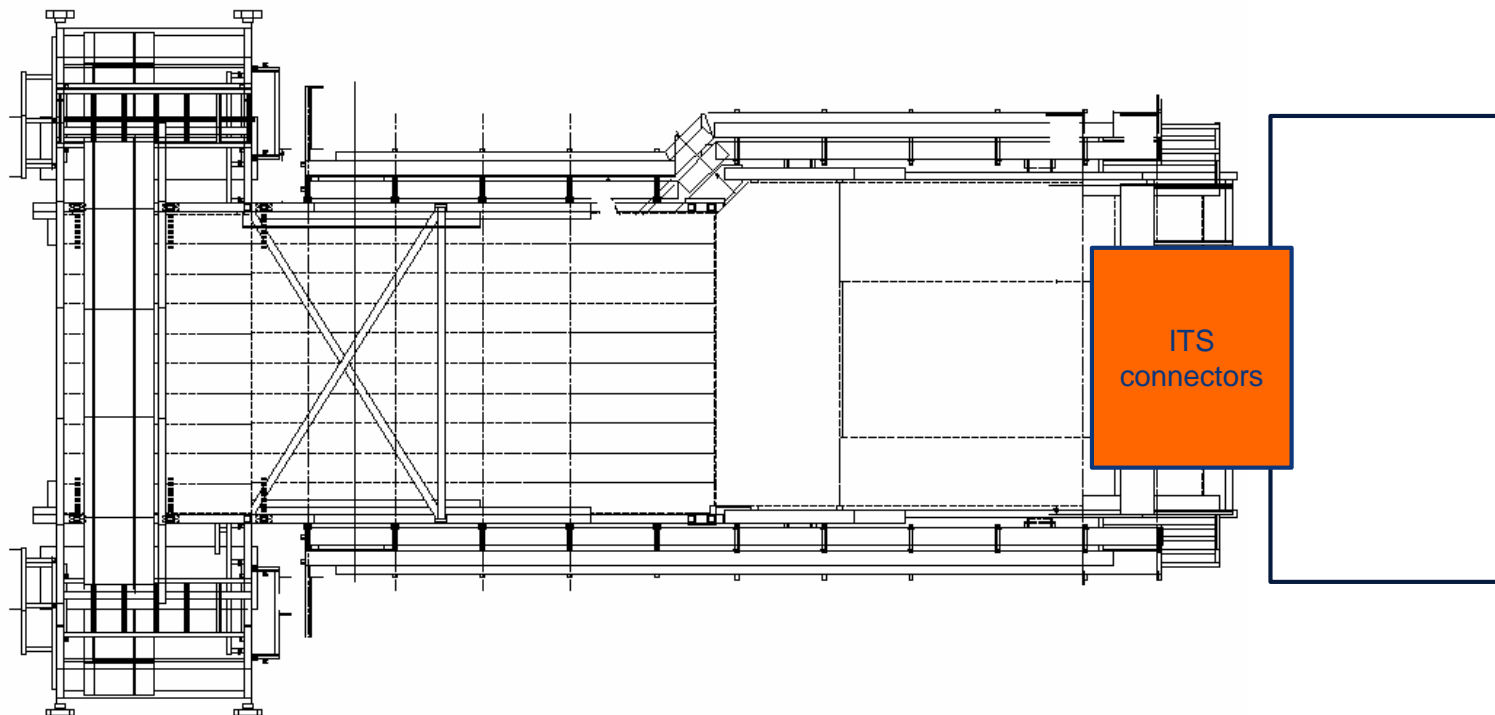


SXL2 activities w32 – Fri 7 Aug 2020

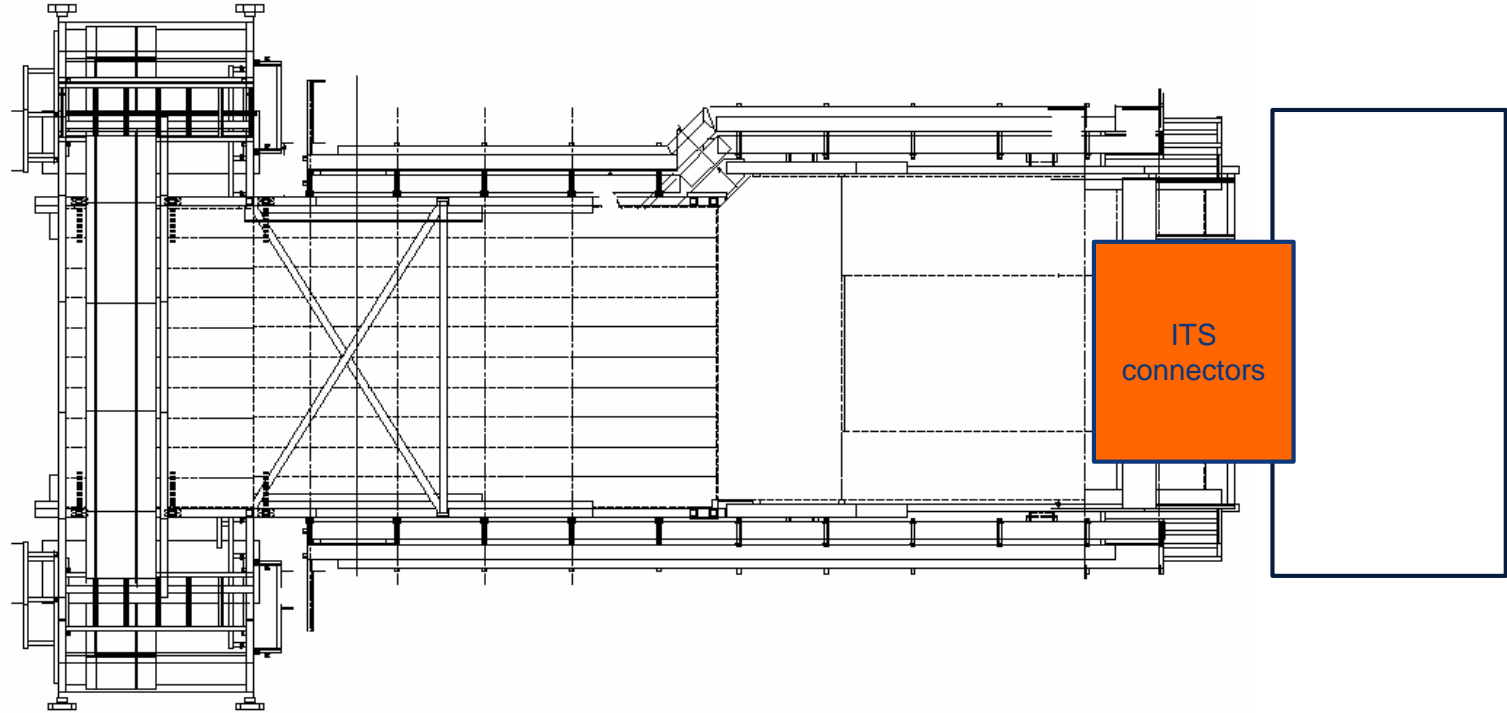


Miniframe activities w32 – Mon 3 Aug 2020

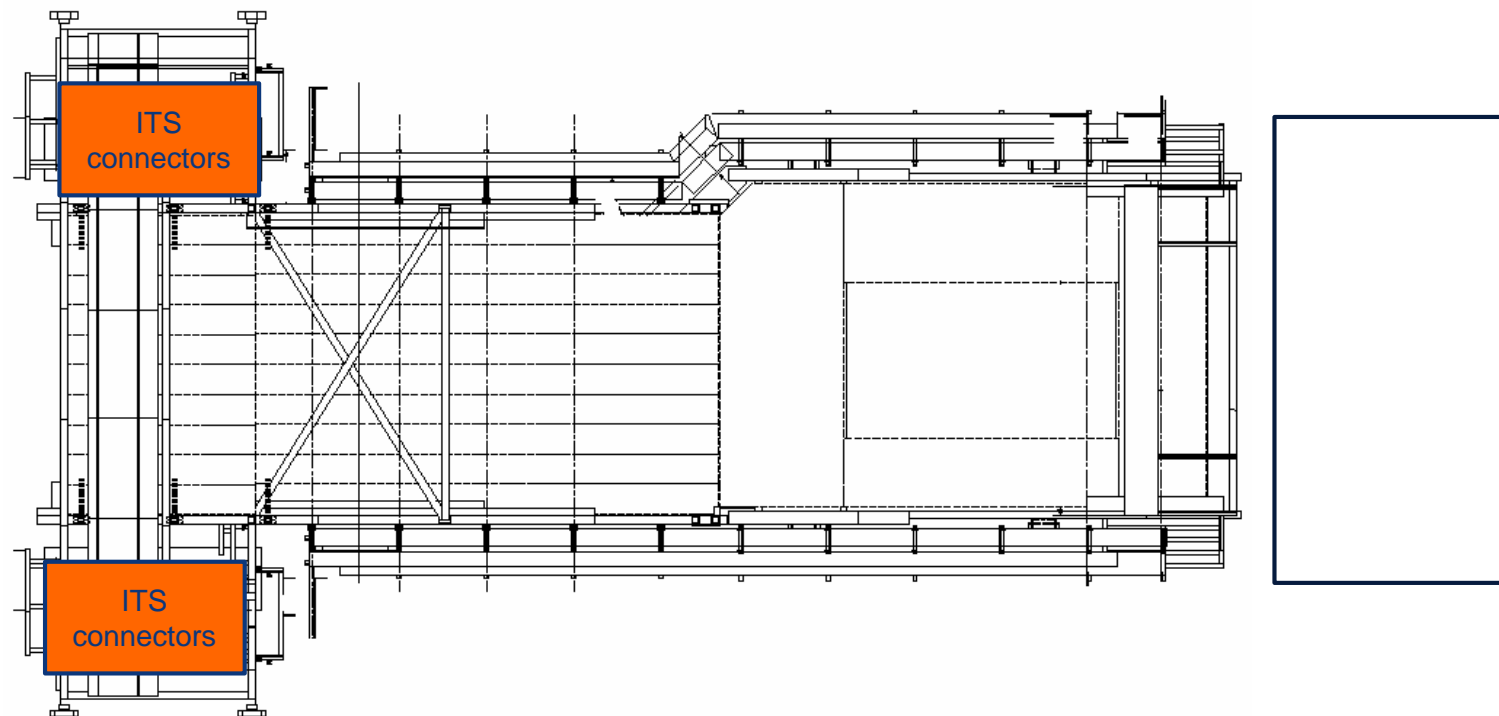
Cleaning Miniframe (Elior)



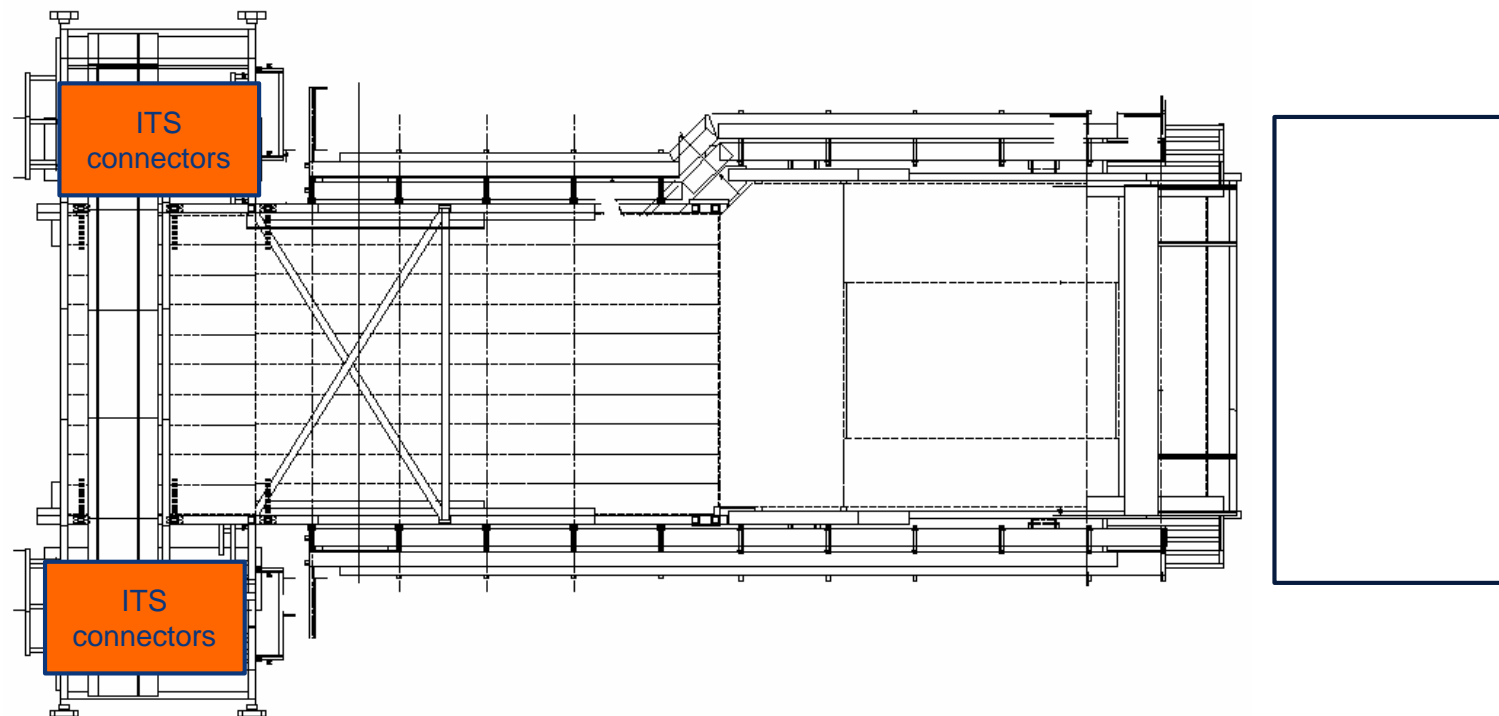
Miniframe activities w32 – Tue 4 Aug 2020



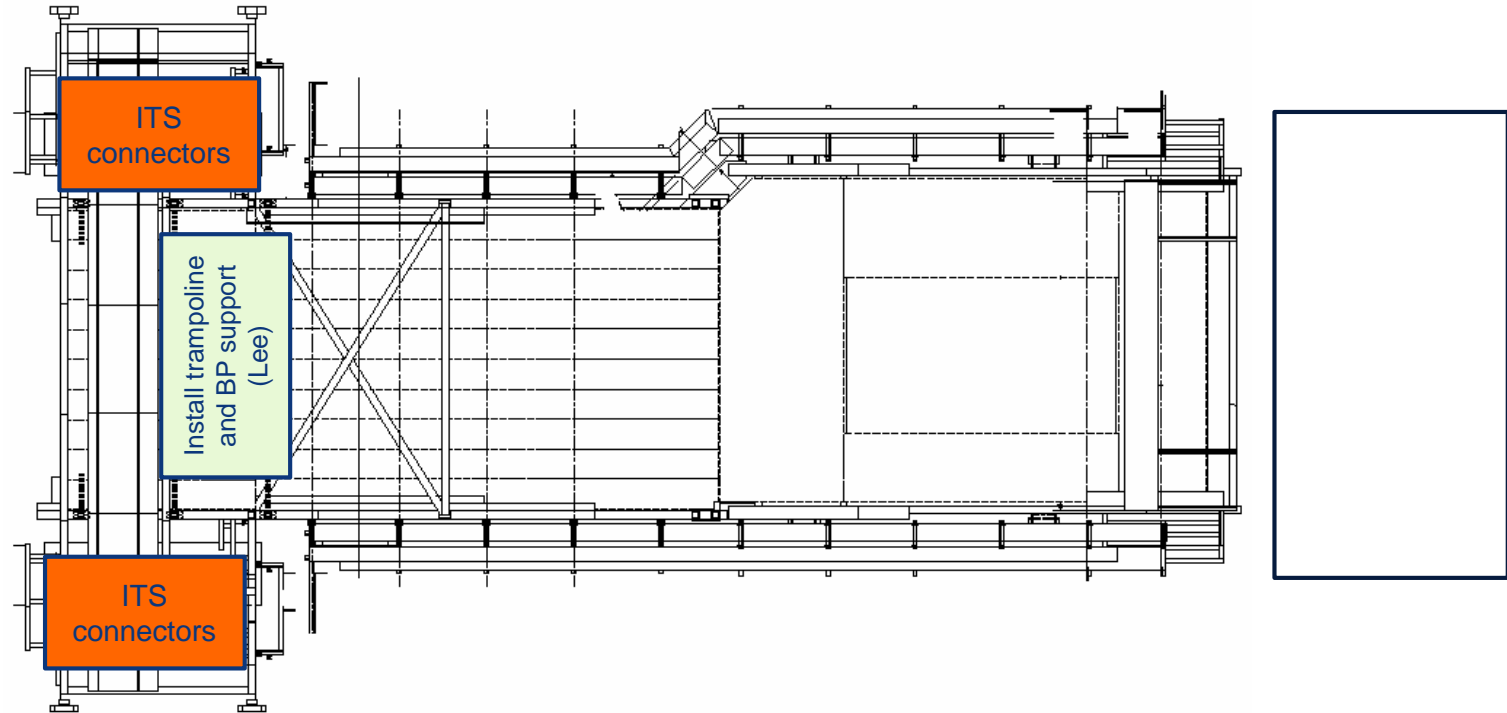
Miniframe activities w32 – Wed 5 Aug 2020



Miniframe activities w32 – Thu 6 Aug 2020



Miniframe activities w32 – Fri 7 Aug 2020



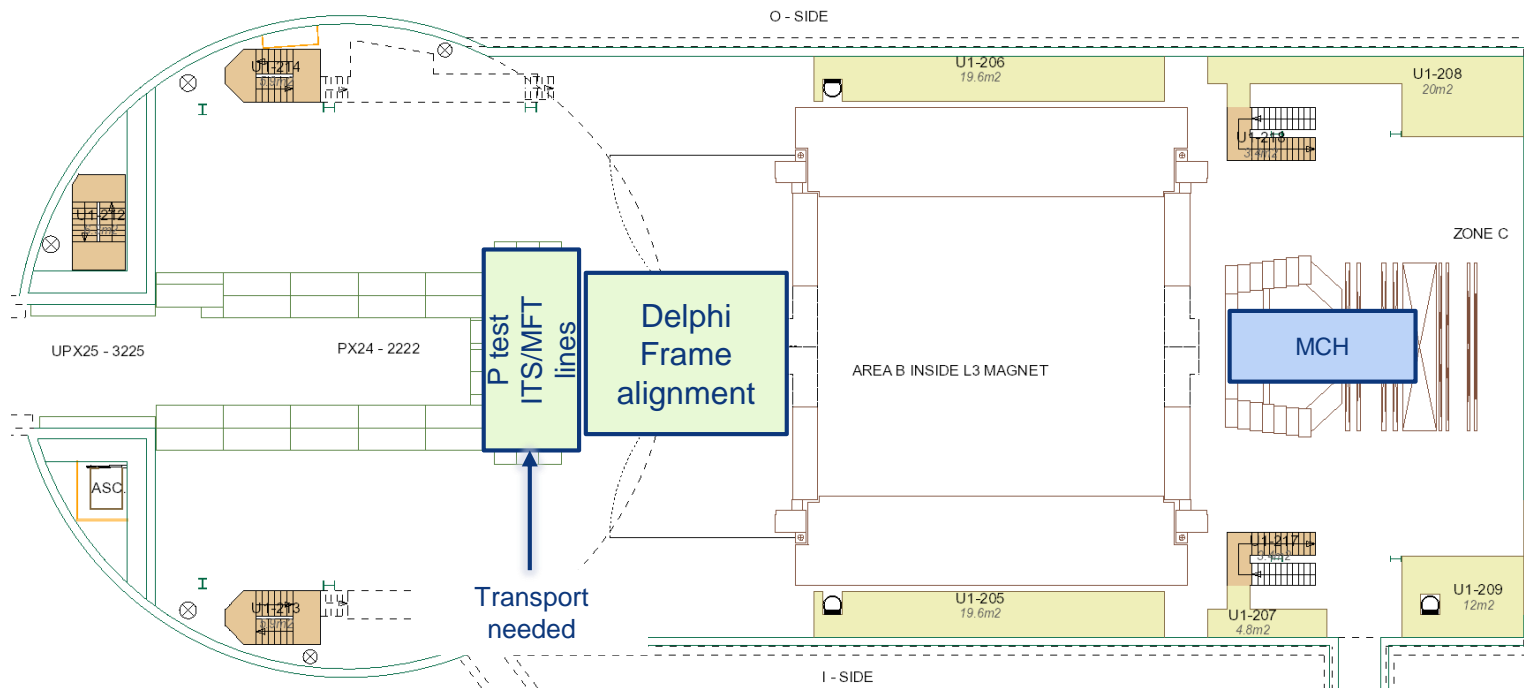
Day-by-day sequence w33



UX25 activities w33 – Mon 10 Aug 2020

Renovation PX24 access system (PAD-MAD): w33-34 access with CSA guard and “access” briefcase

ALTEAD: bring DF floor from SU to UX25

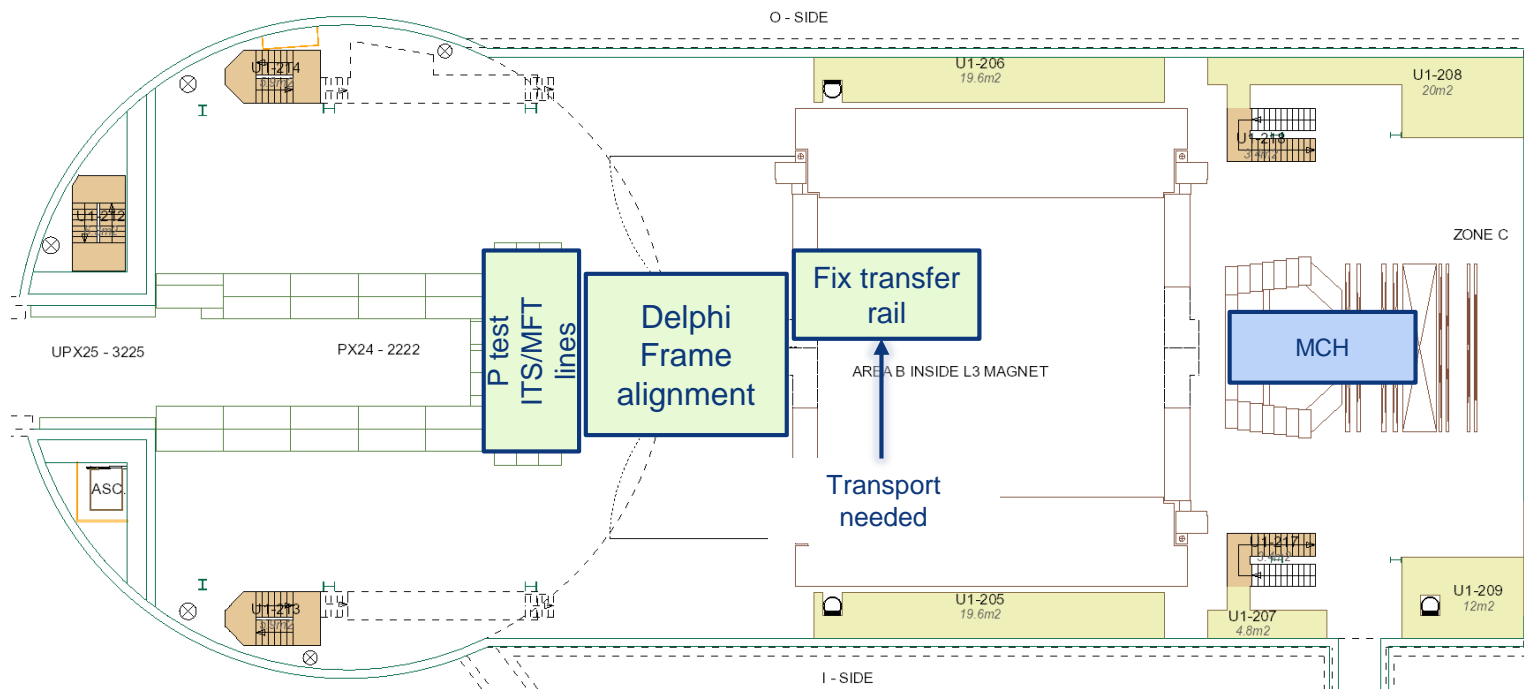




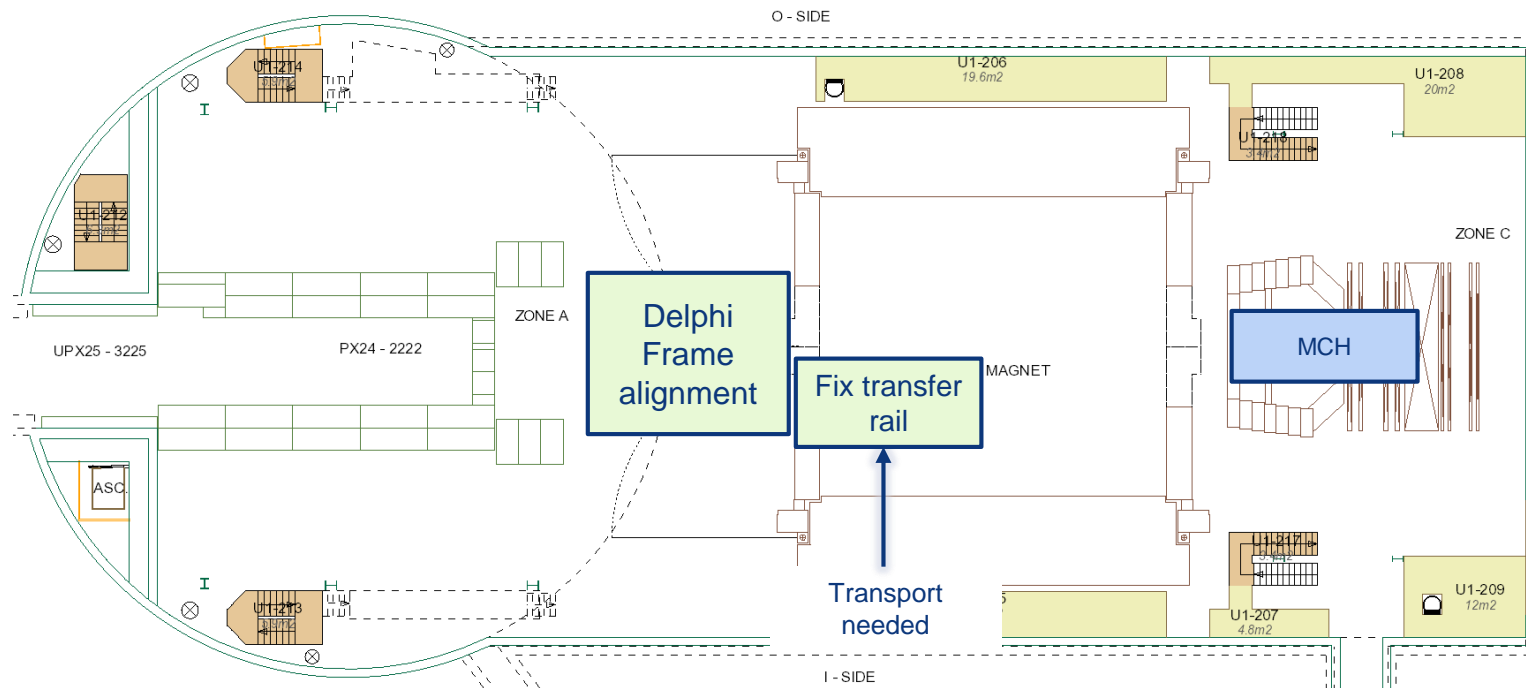
ALTEAD: extract TPC pump in CR5 (maintenance)



UX25 activities w33 – Wed 12 Aug 2020

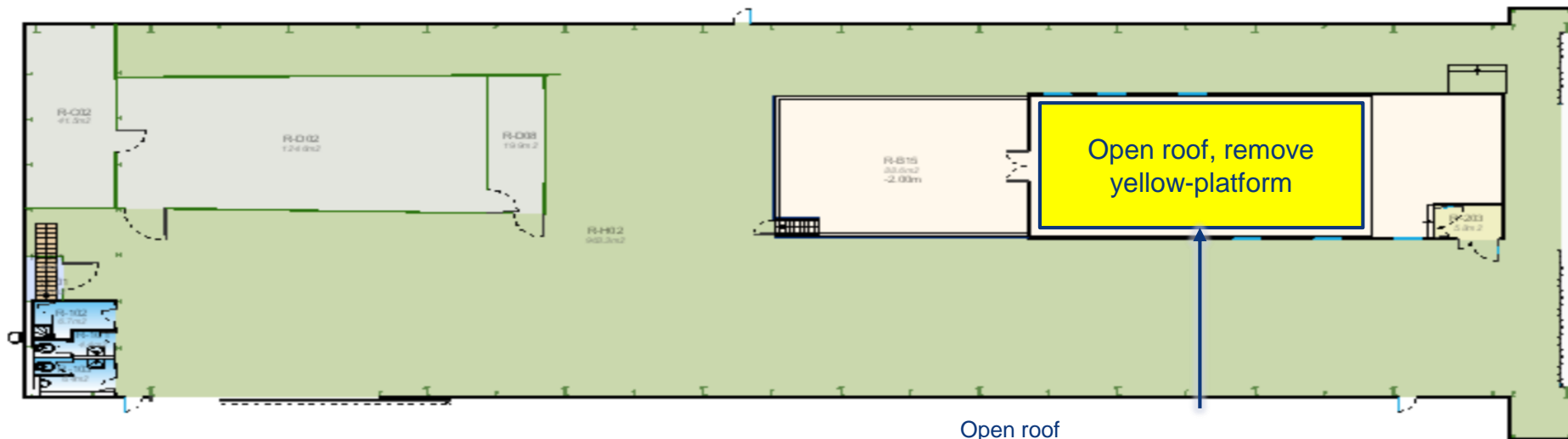


UX25 activities w33 – Thu 13 Aug 2020





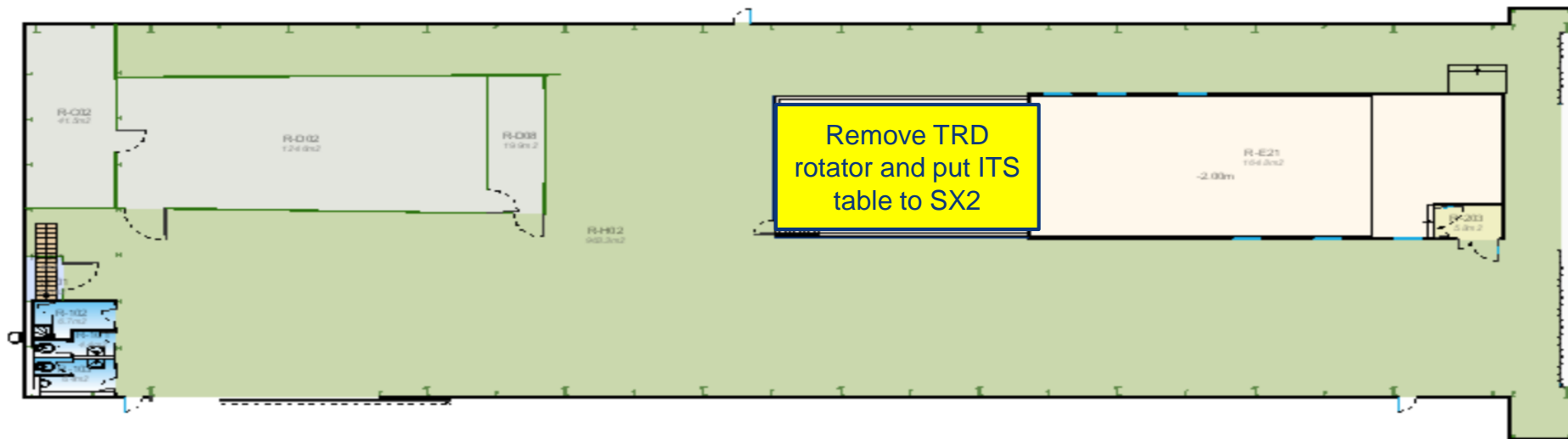
SXL2 activities w33 – Mon 10 Aug 2020



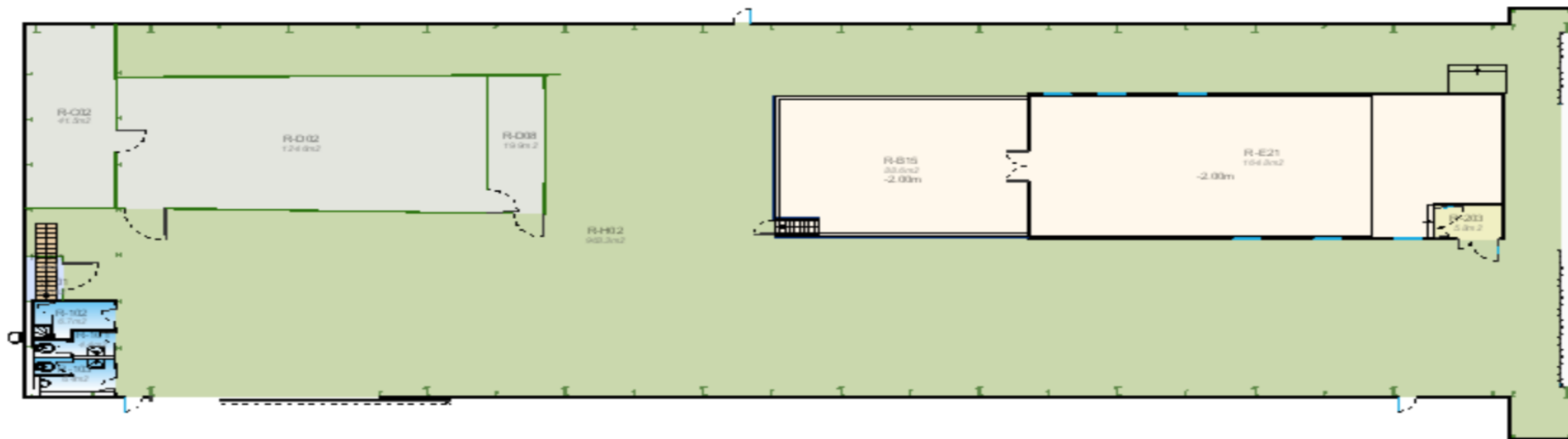
Open roof
Remove Yellow Platform and green crane
Take out laser (TPC people!)
Remove laser concrete blocks
Close roof

SXL2 activities w33 – Tue 11 Aug 2020

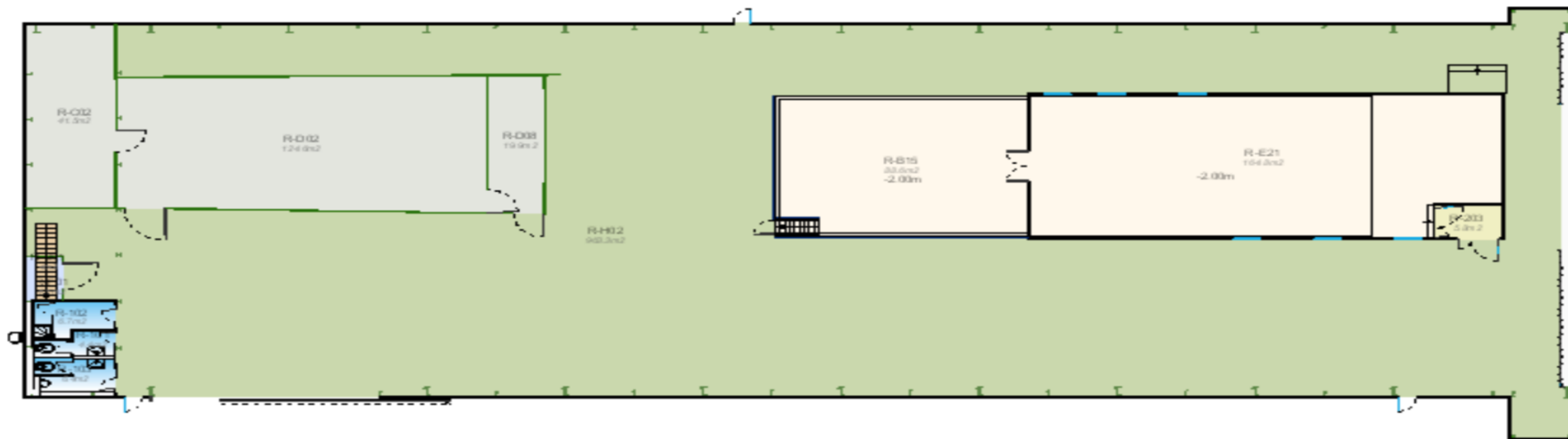
Borge at CERN (tbc)



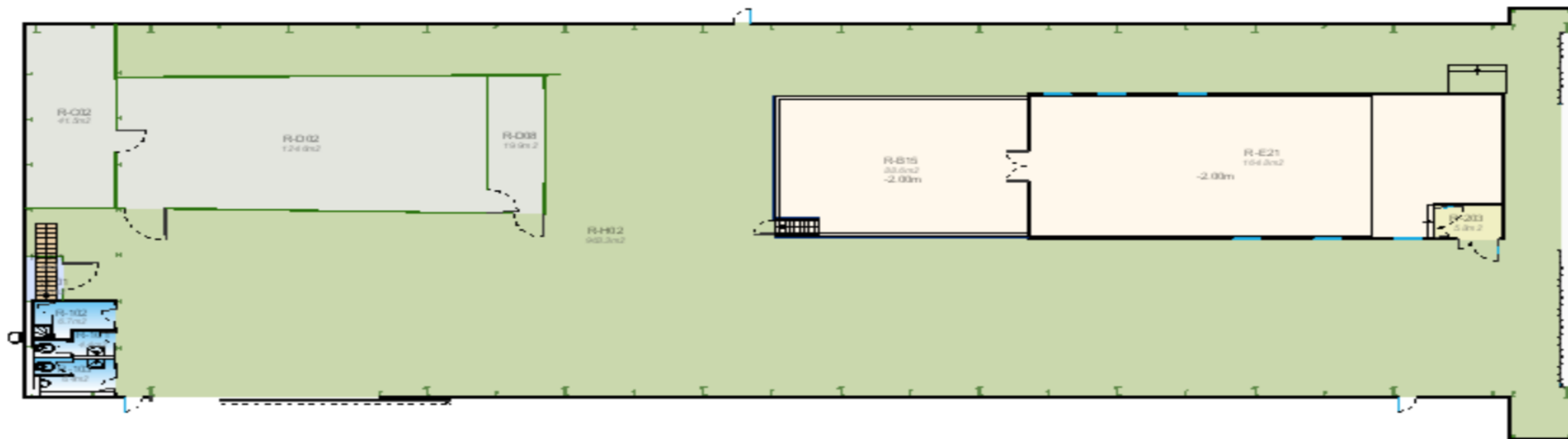
SXL2 activities w33 – Wed 12 Aug 2020



SXL2 activities w33 – Thu 13 Aug 2020



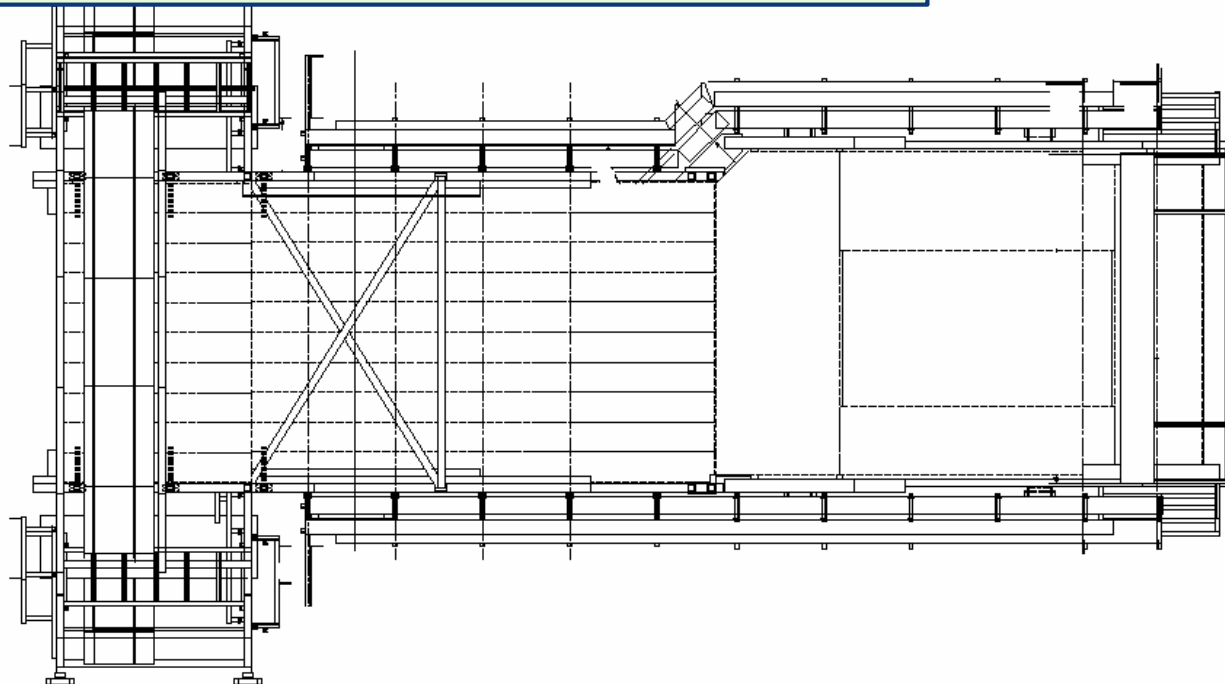
SXL2 activities w33 – Fri 14 Aug 2020



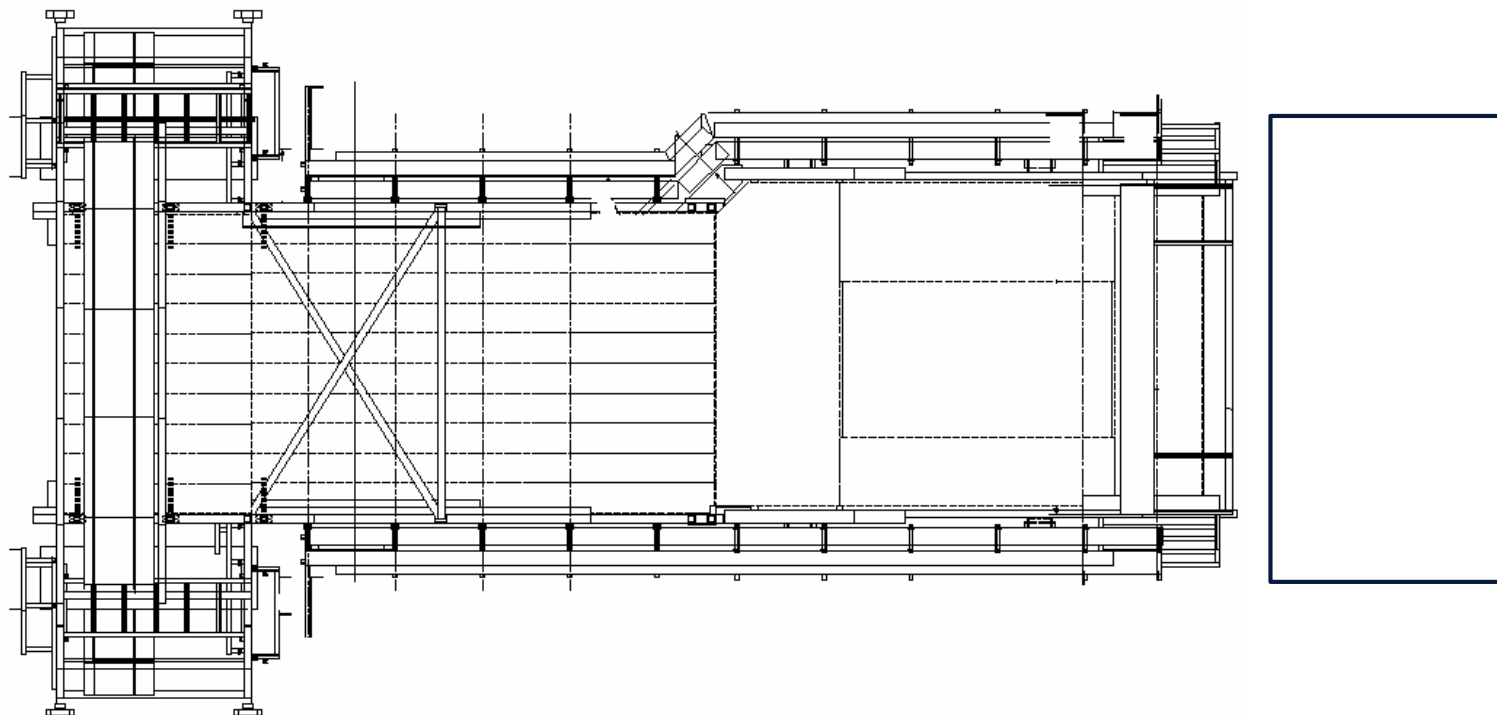
Miniframe activities w33 – Mon 10 Aug 2020

Cleaning Miniframe (Elior)

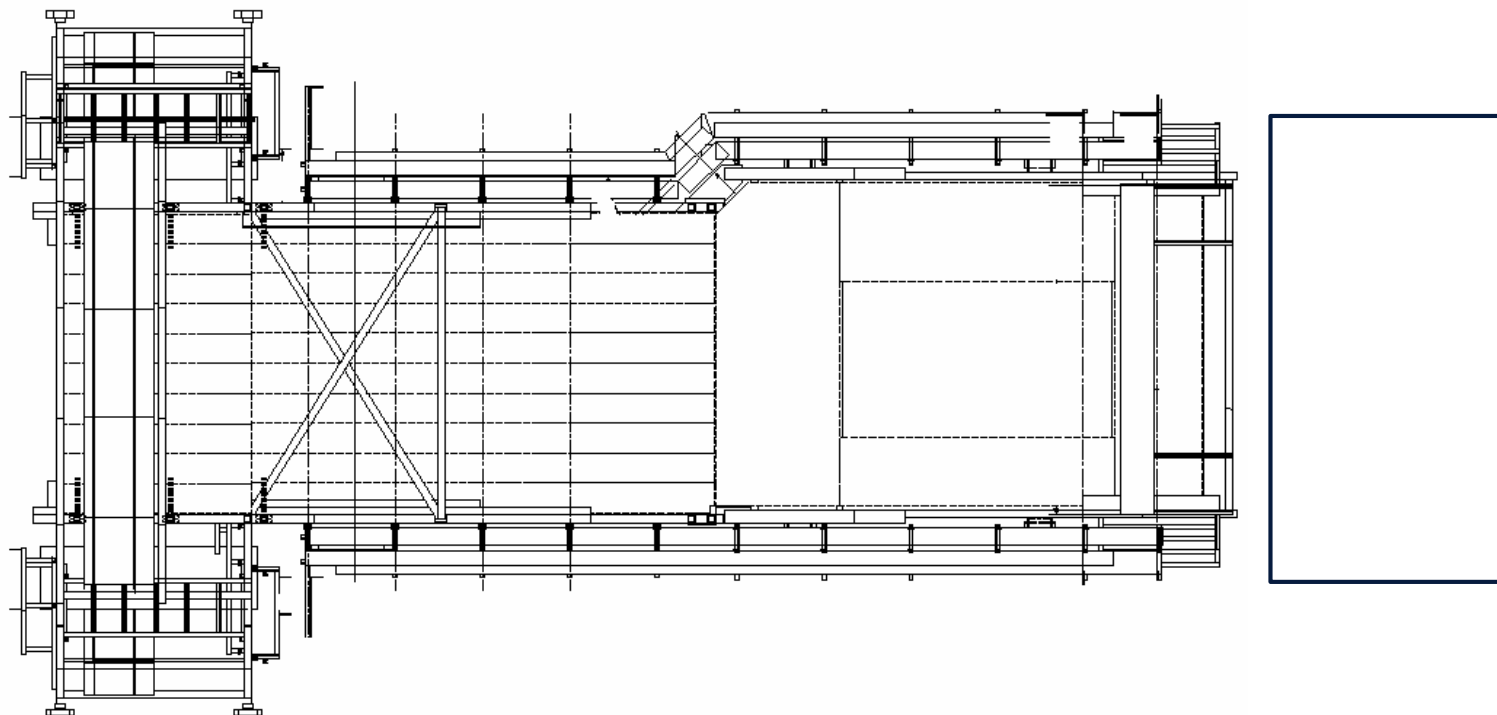
Rework ITS/MFT cooling lines (PP1) (whole week) (Philippe)



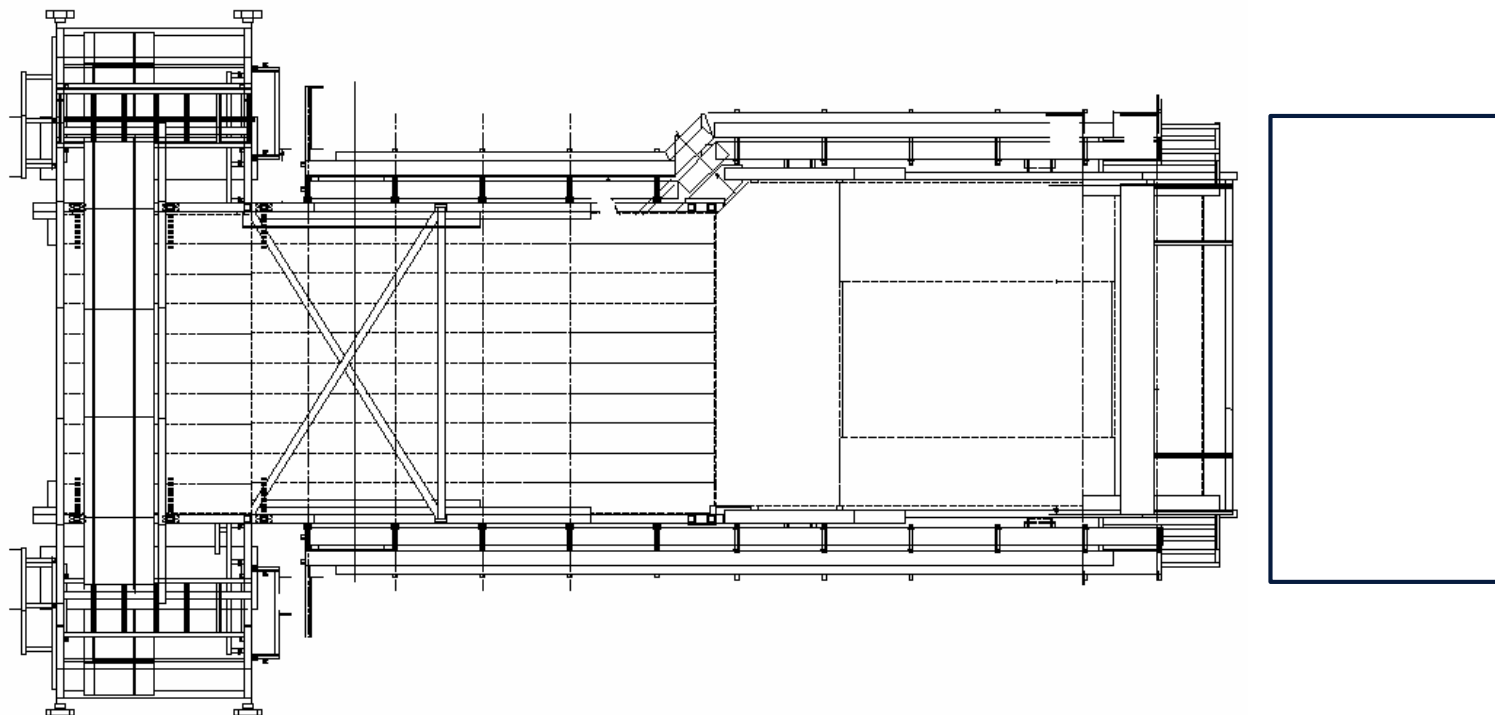
Miniframe activities w33 – Tue 11 Aug 2020



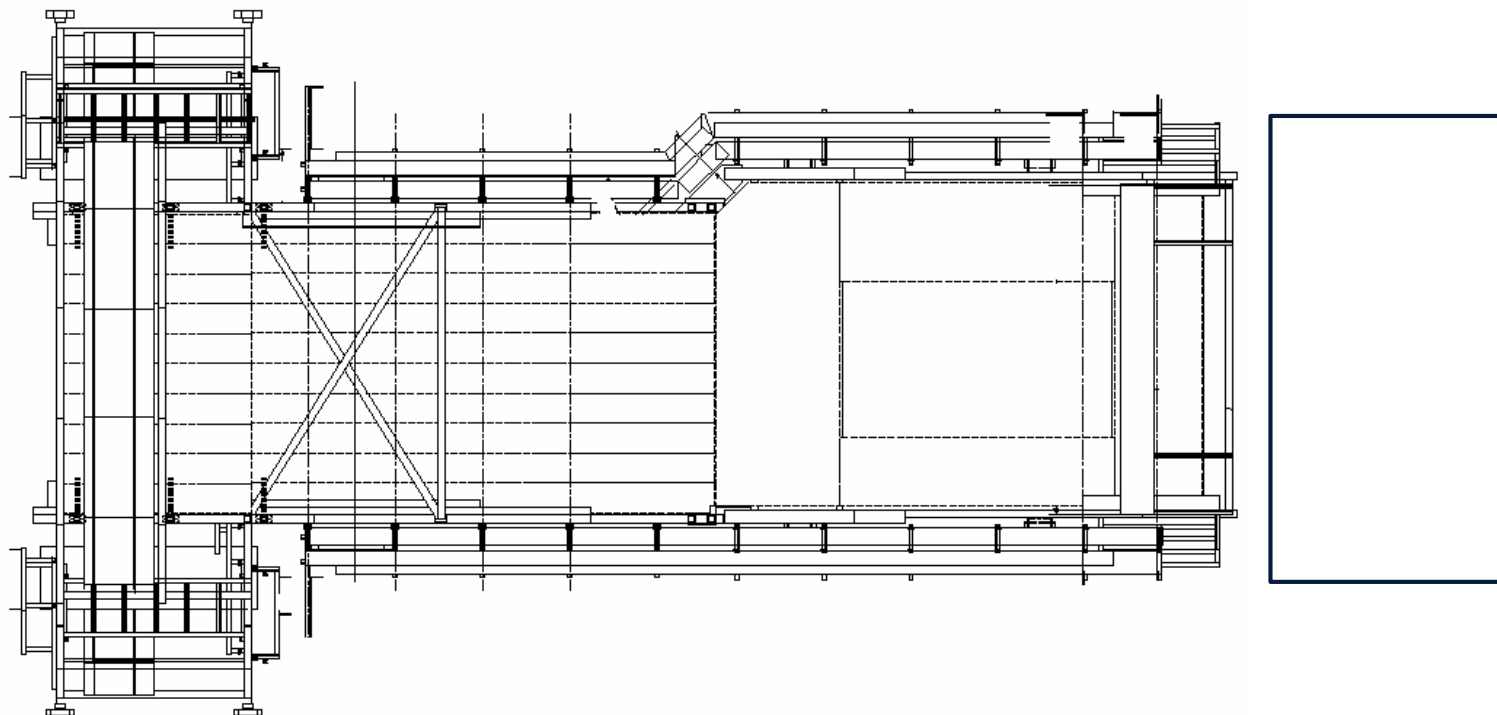
Miniframe activities w33 – Wed 12 Aug 2020



Miniframe activities w33 – Thu 13 Aug 2020



Miniframe activities w33 – Fri 14 Aug 2020

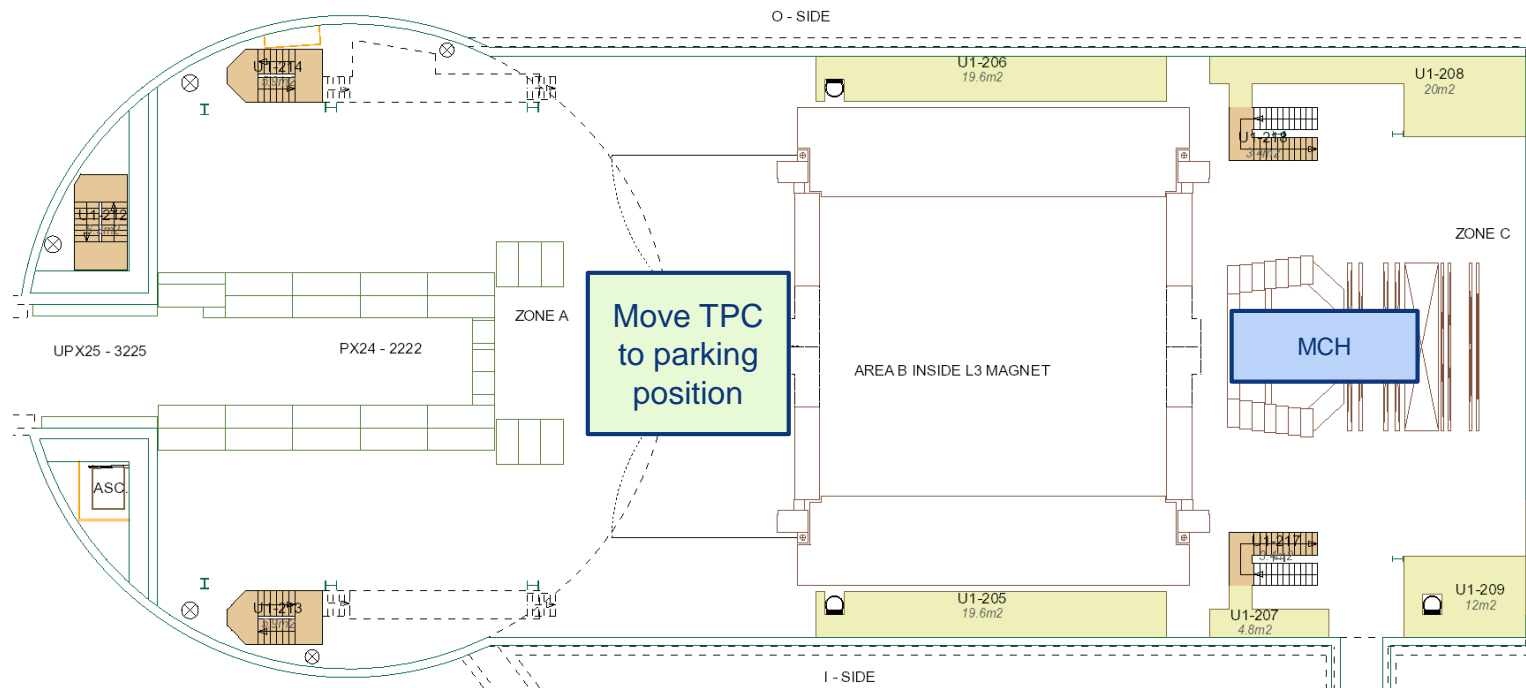


Day-by-day sequence w34



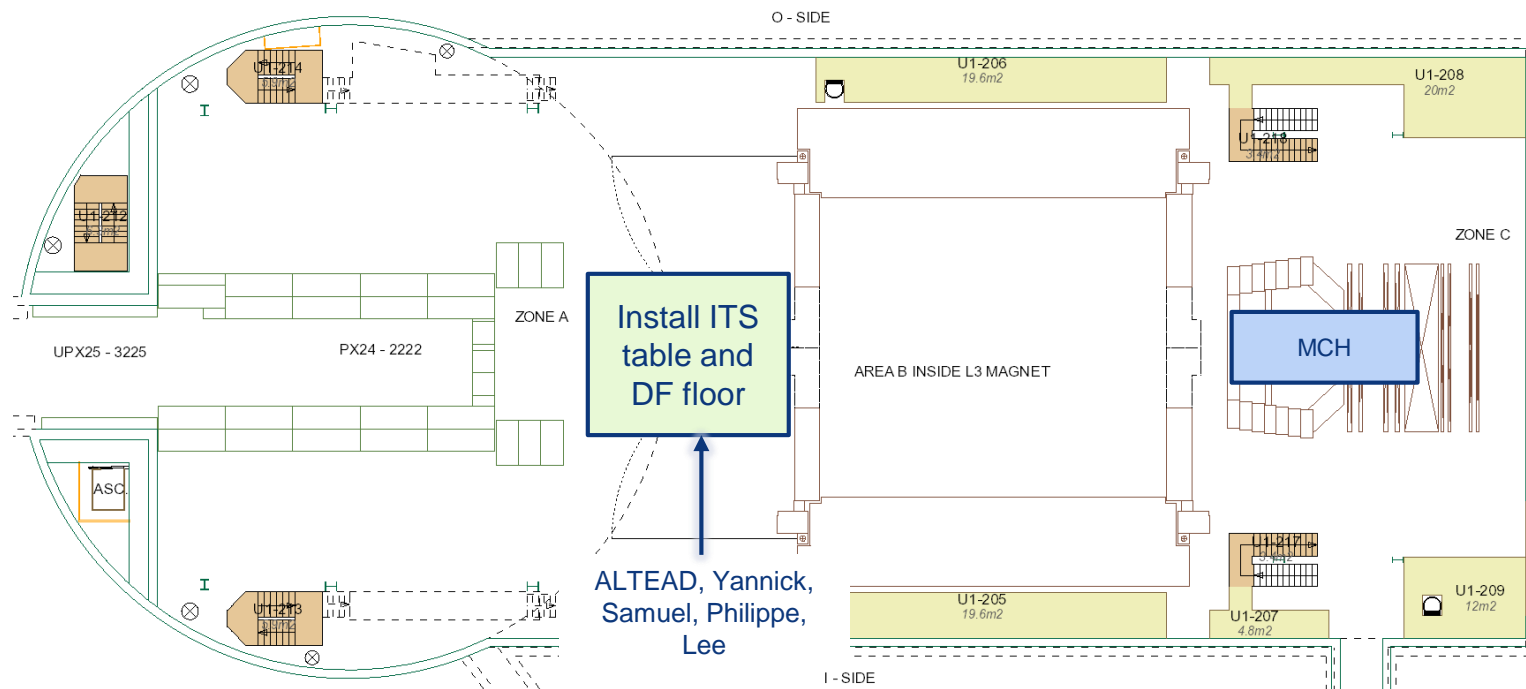
UX25 activities w33 – Mon 17 Aug 2020

Renovation PX24 access system (PAD-MAD): w33-34 access with CSA guard and “access” briefcase



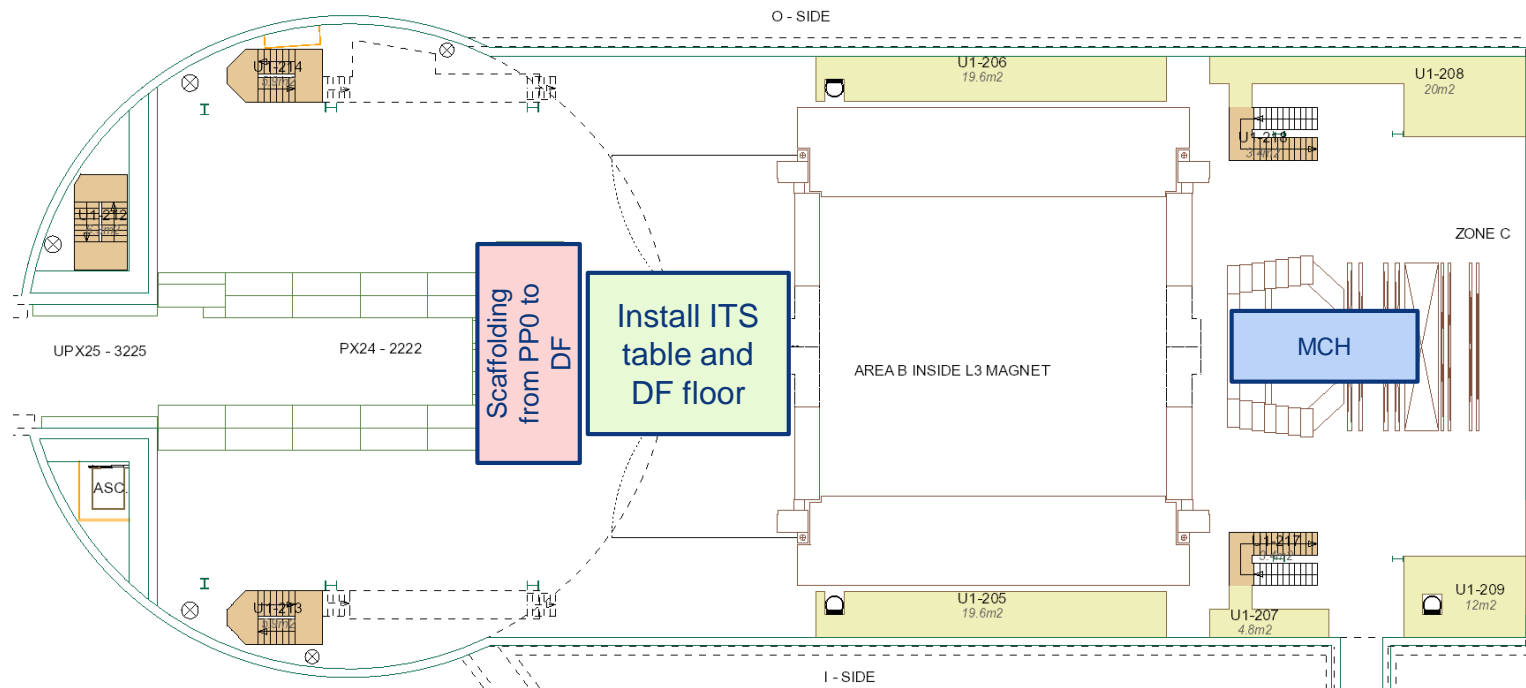


UX25 activities w34 – Wed 19 Aug 2020

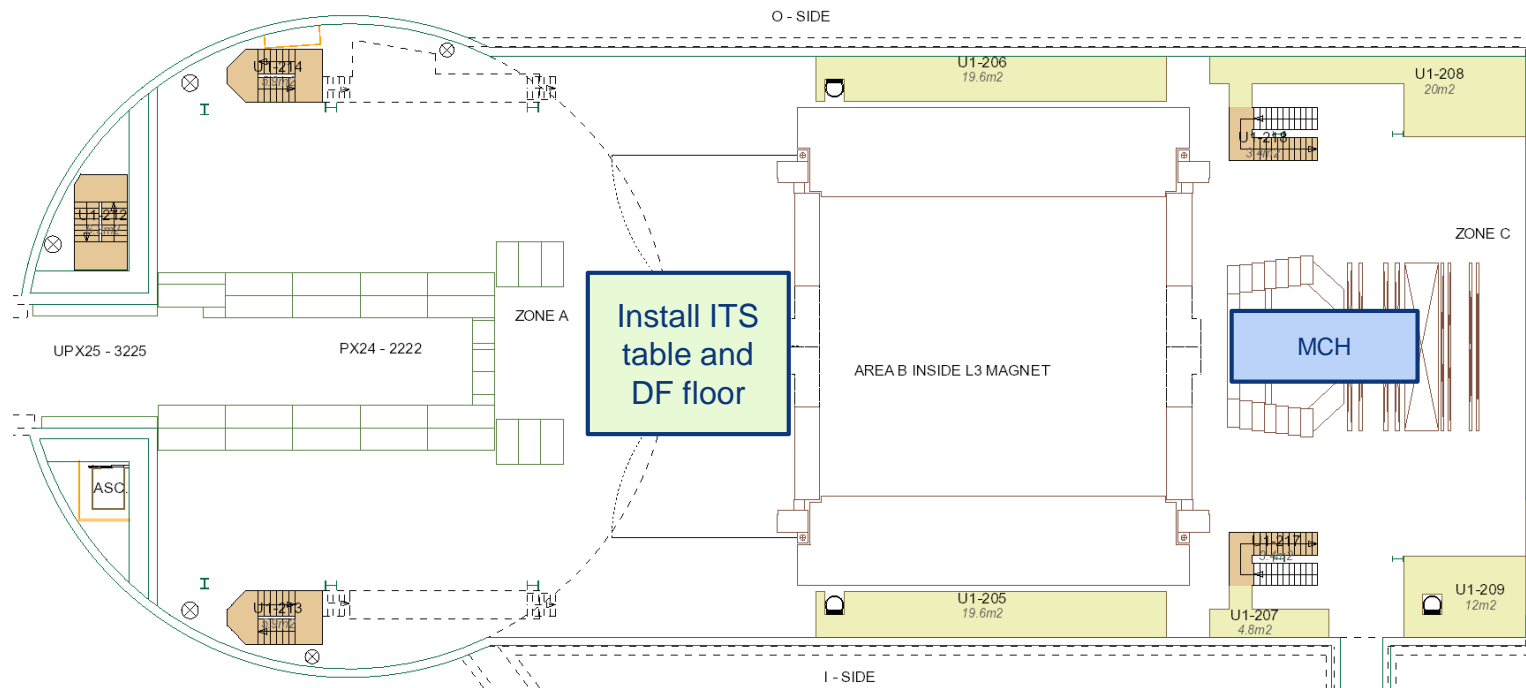


UX25 activities w34 – Thu 20 Aug 2020

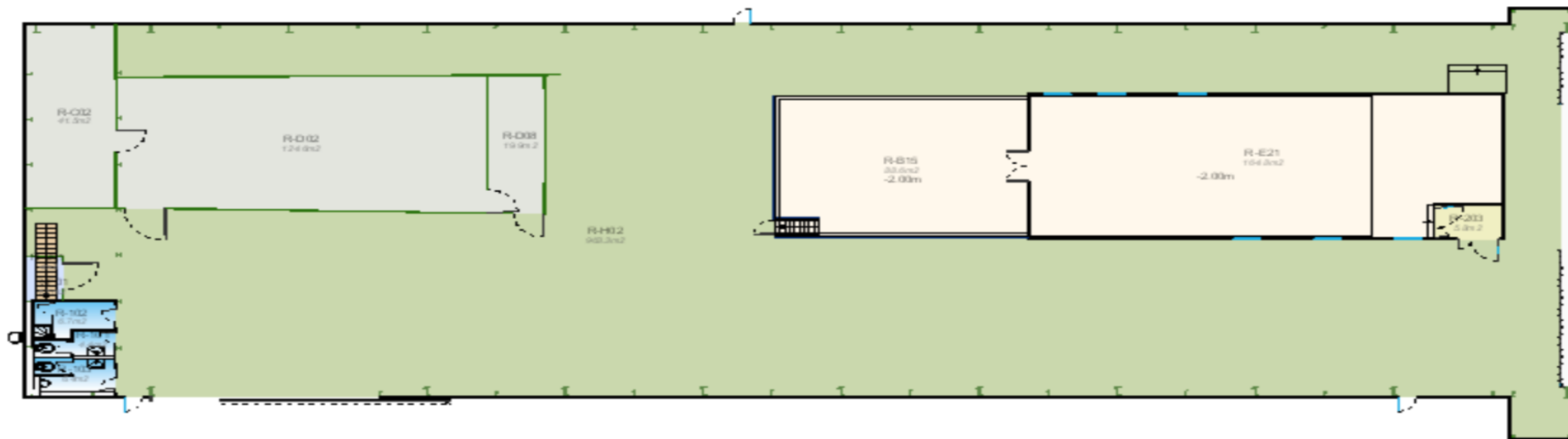
Transport ITS cage from b.167 to P2 (install box in UX25 cavern)



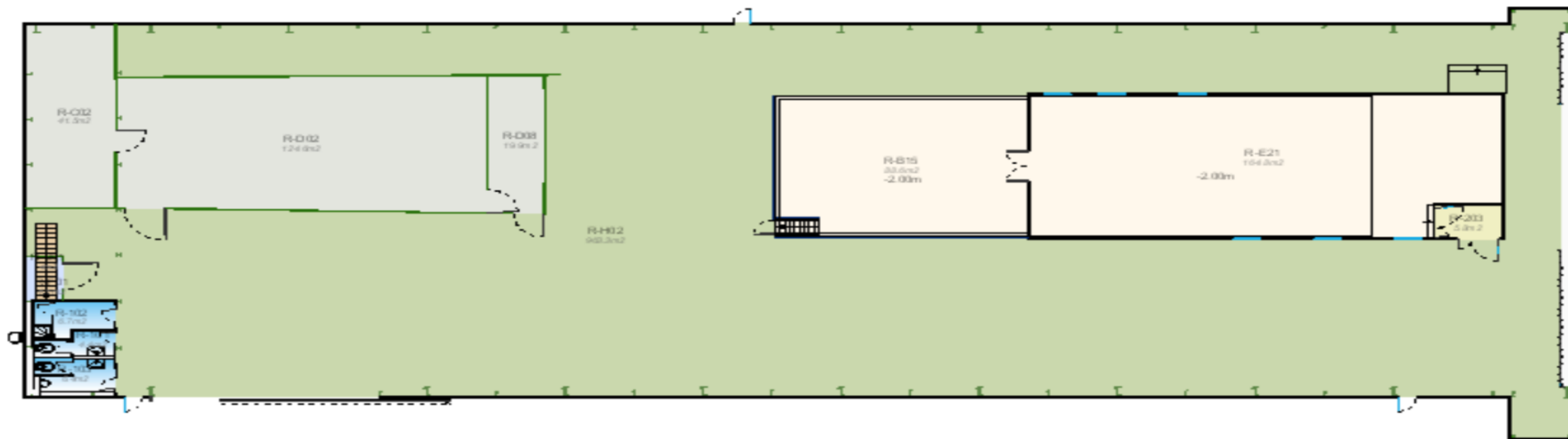
UX25 activities w34 – Fri 21 Aug 2020



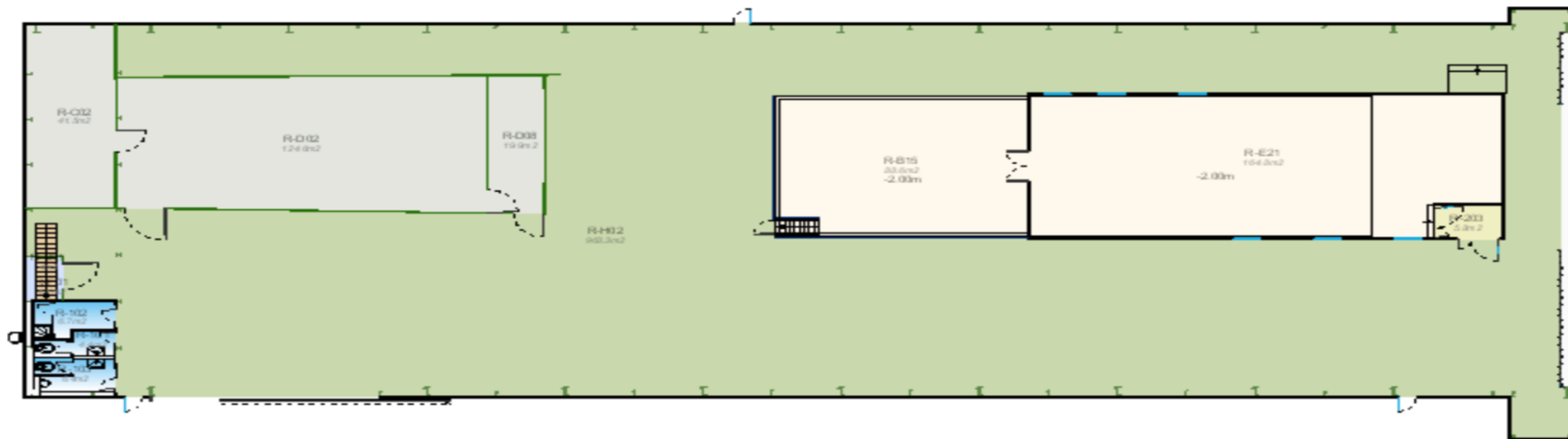
SXL2 activities w34 – Mon 17 Aug 2020



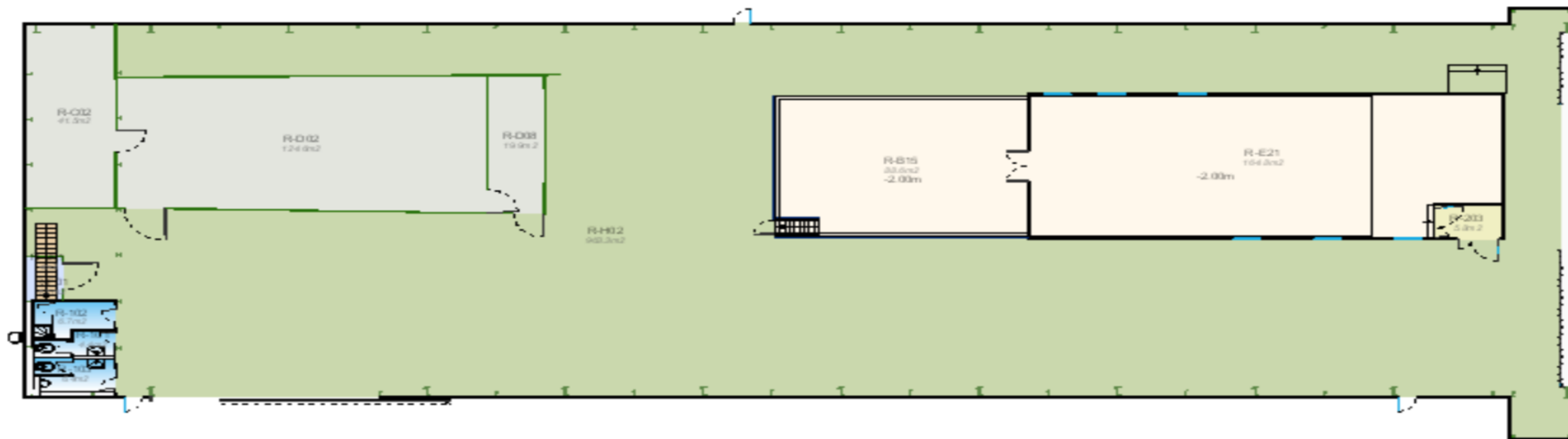
SXL2 activities w34 – Tue 18 Aug 2020



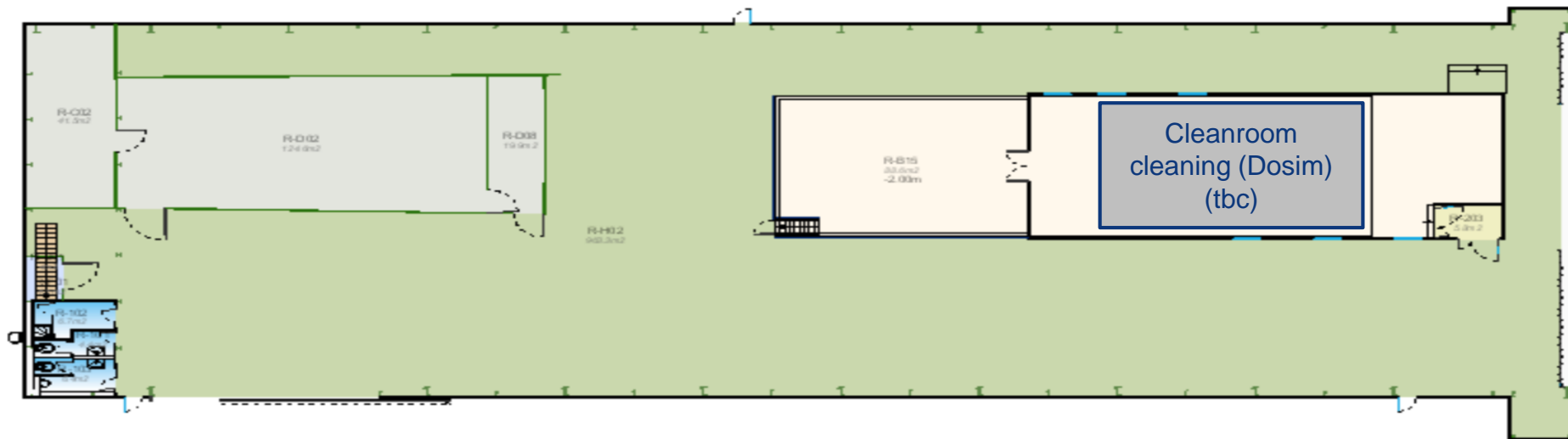
SXL2 activities w34 – Wed 19 Aug 2020



SXL2 activities w34 – Thu 20 Aug 2020

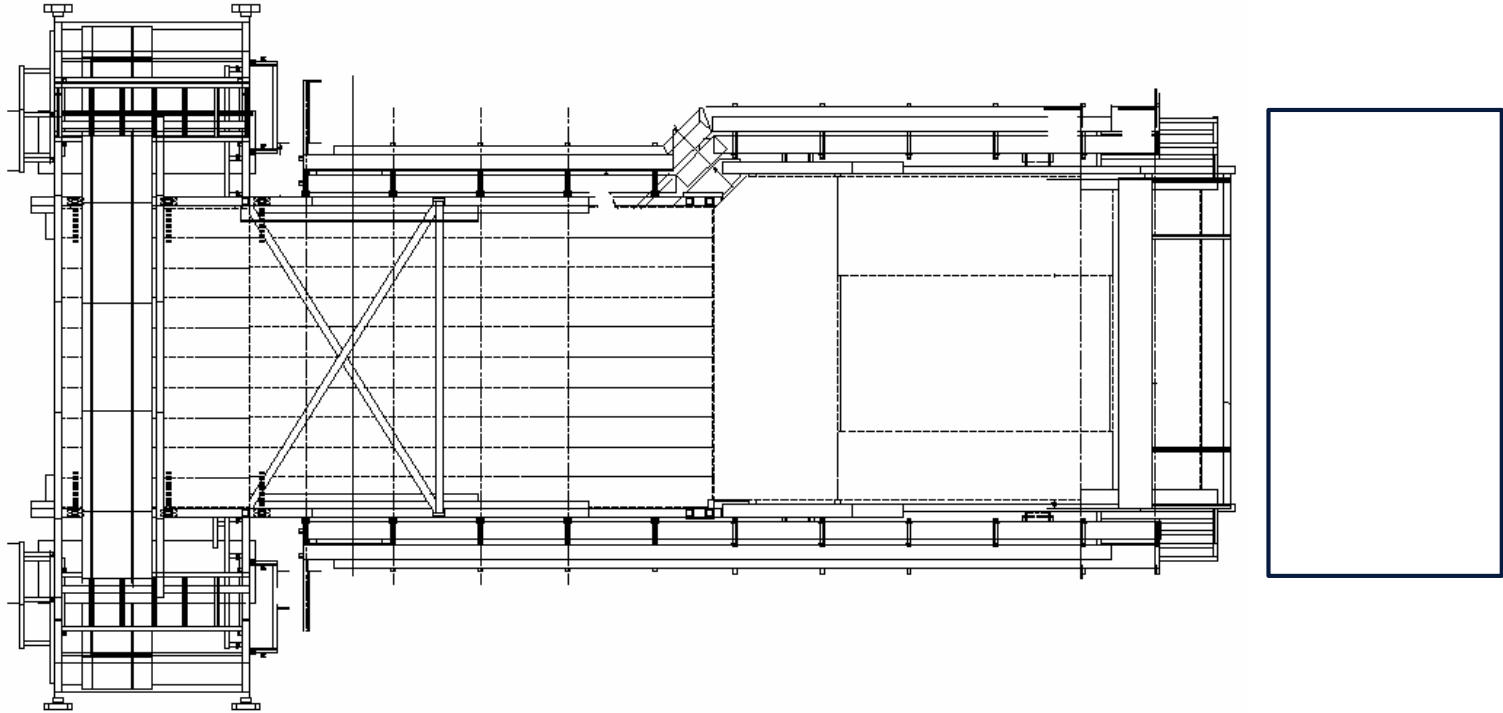


SXL2 activities w34 – Fri 21 Aug 2020

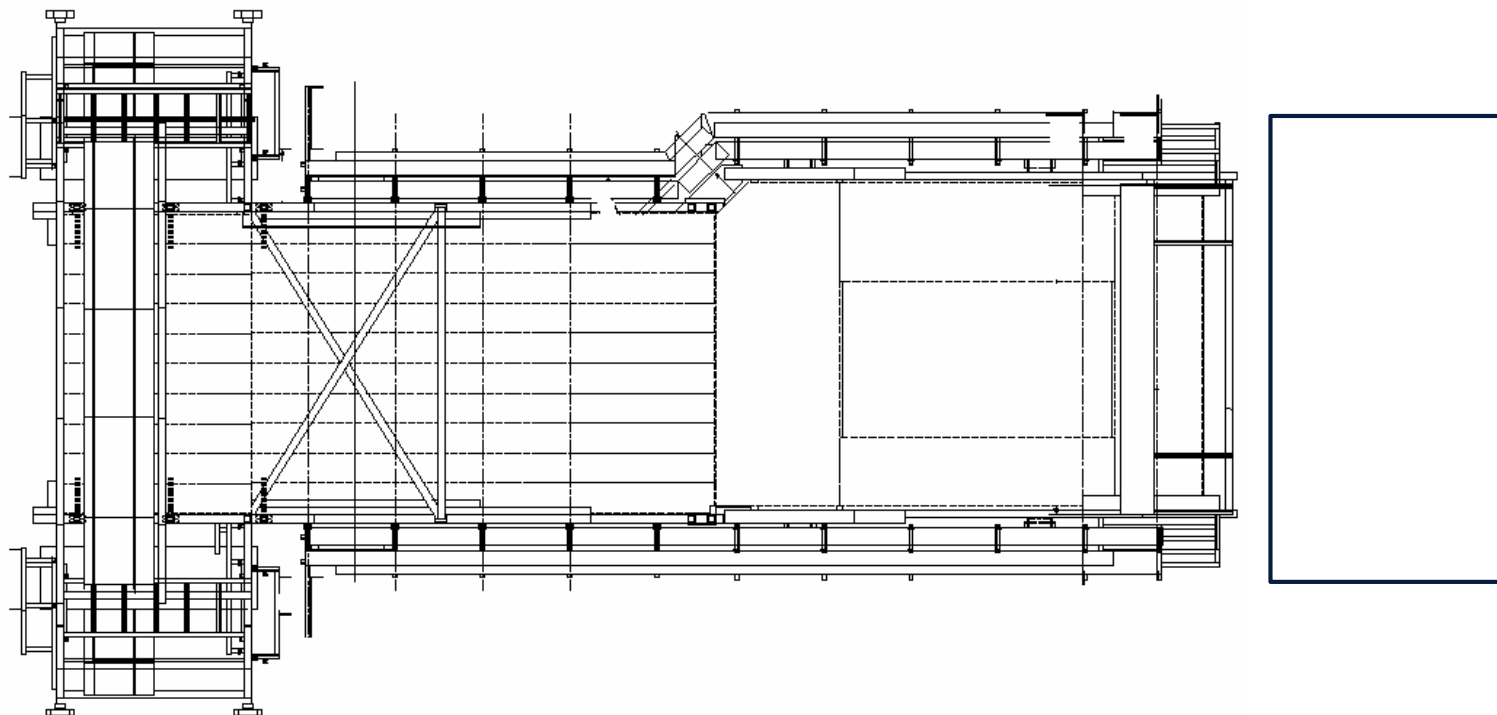


Miniframe activities w34 – Mon 17 Aug 2020

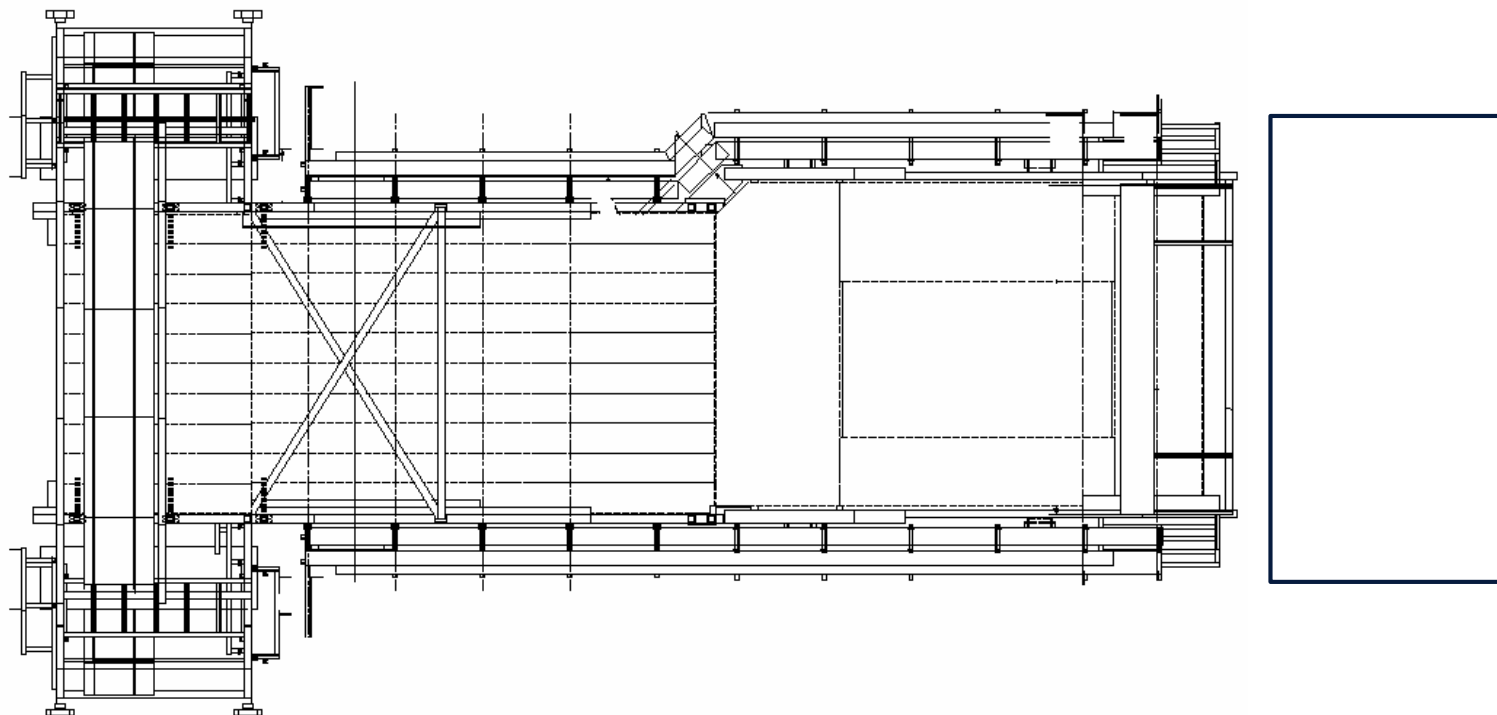
Cleaning Miniframe (Elior)



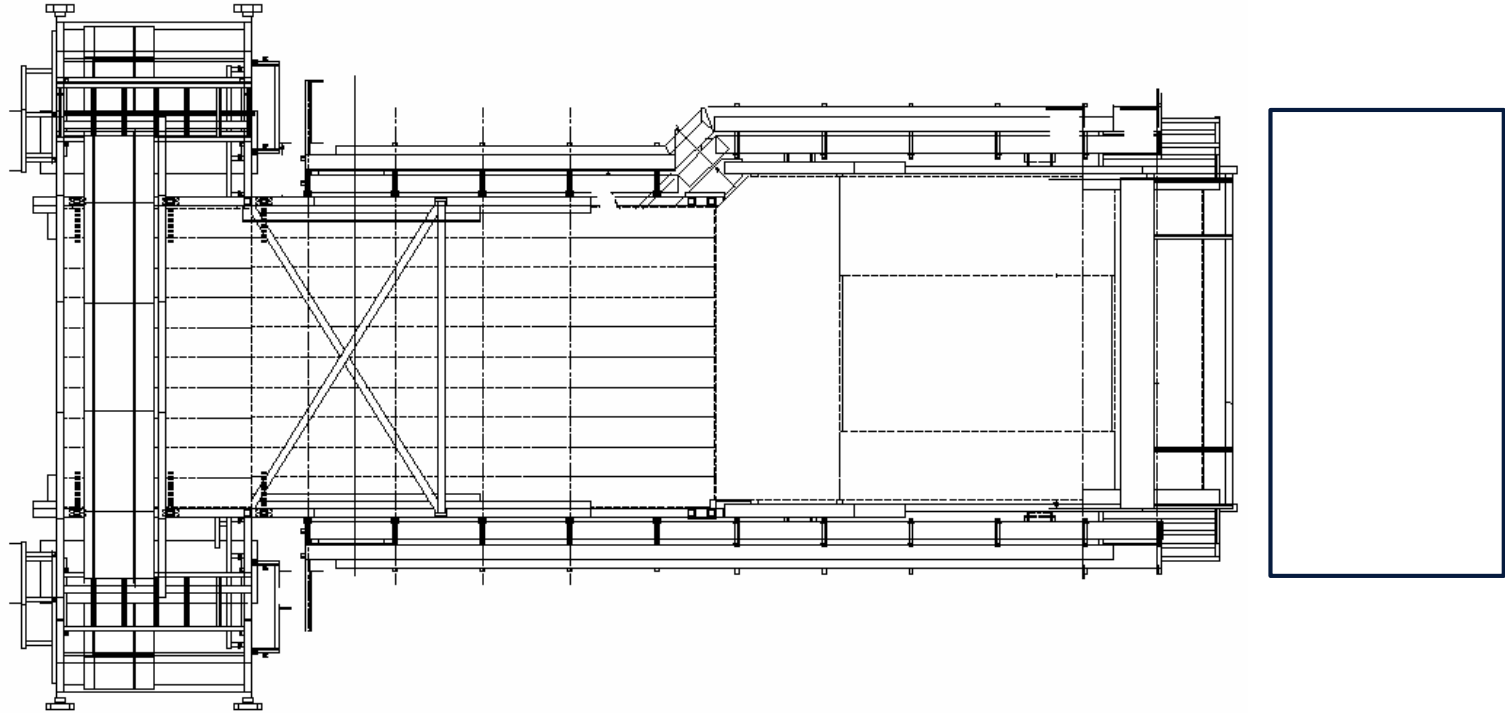
Miniframe activities w34 – Tue 18 Aug 2020



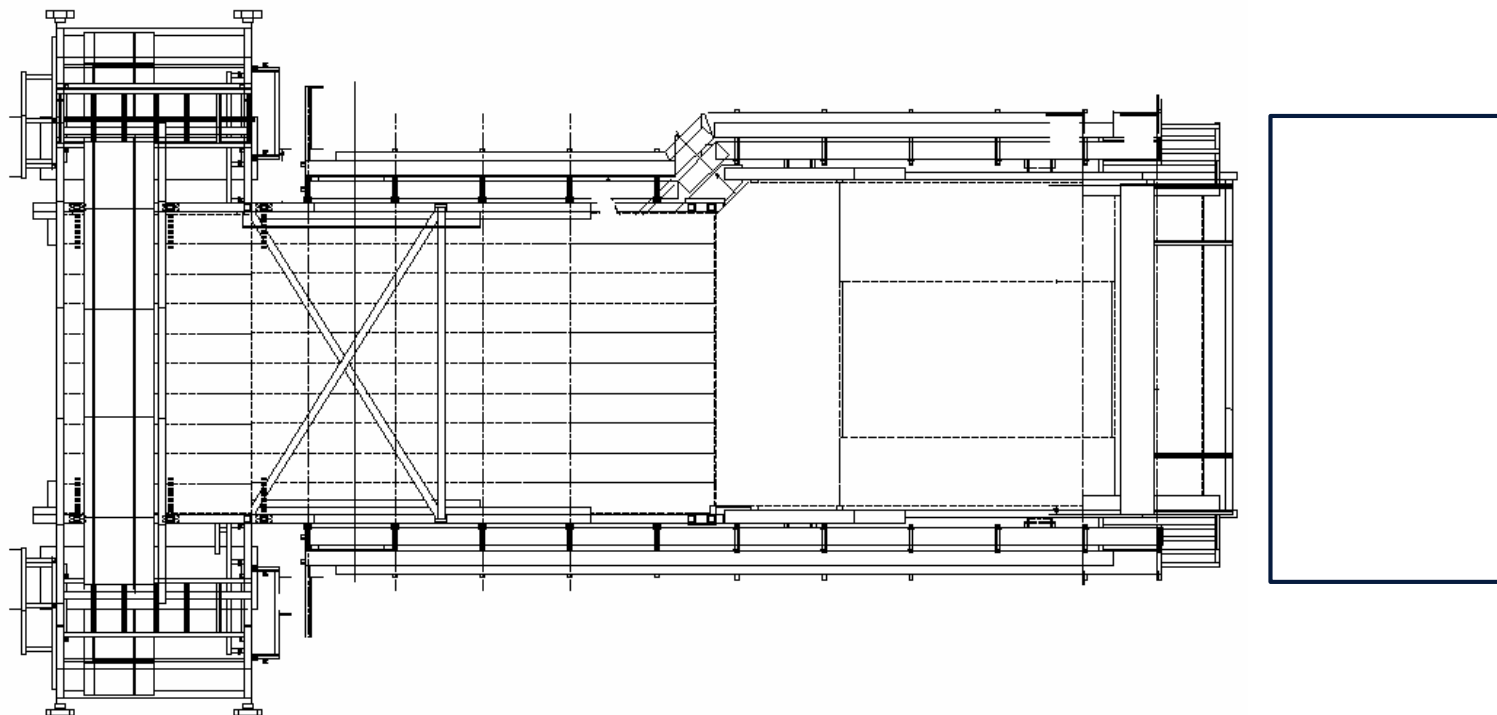
Miniframe activities w34 – Wed 19 Aug 2020



Miniframe activities w34 – Thu 20 Aug 2020



Miniframe activities w34 – Fri 21 Aug 2020



- Next LS2 planning meeting on Friday August 28st