



CERN Phonebook

Rocio Alot Barajas


Building 5,
2nd floor
office 025


R = ground floor (rez de chaussee)
S = basement (sous-sol)

People

Exact Results | Similar Results

Alot Barajas, Rocio

 HR-TA-SR

 5/2-025

63583



rocio.alot@cern.ch



C09110

Bienvenue Welcome

Rocio ALOT

Recruitment and
Sourcing Specialist

HR Department

Erwin MOSSELMANS

Learning Specialist

HR Department



Welcome at CERN



Logistics - language



Classroom courses

cern.ch/learninghub

A screenshot of the CERN Learning Hub website. The header includes the CERN logo, 'Learning Hub', and navigation links for 'MY LEARNING' and 'CATALOGUES'. The main content area is titled 'CATALOG: LANGUAGE' and includes a breadcrumb 'Top > Language'. Under 'Sub Catalogues', there are two buttons: a pink one labeled 'EN' for 'English courses' and a purple one labeled 'FR' for 'French courses'.

Tandem

[link](#)

Find a partner
to practice speaking
each other's language



Logistics - slides



Available at any time

direct link : <https://indico.cern.ch/category/10150/>

Programme of the morning

Welcome by James Purvis, Head HR Department

09.10 Quiz – CERN as organization

Coffee and croissants and networking

10.00 Quiz – daily life at CERN

10.25 Meet colleagues from your department
Transfer to department

11.00 Welcome in department (for BE : 14.00)

Many questions, answers are ...



Your departmental secretariat
Your supervisor, your colleagues



Specific question for personal situation?
→ Make appointment with the **expert services**
Pension Fund, Health Insurance, Installation Service,
Housing Service, Social Service, ...



HR Website > Welcome > my first week

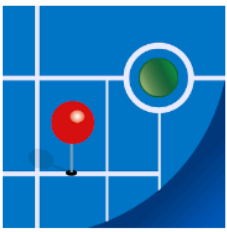
Bienvenue Welcome

James PURVIS

Chef du département des ressources humaines
Head, Human Resources Department



Link to [video on Indico](#)



MapCERN





<https://visit.cern/globe/history-globe>



CERN MoP
> 17 200

Contractors
> 4 500



Employed MPE
> 3 300

Associated MPA
> 13 900

Staff
> 2 500

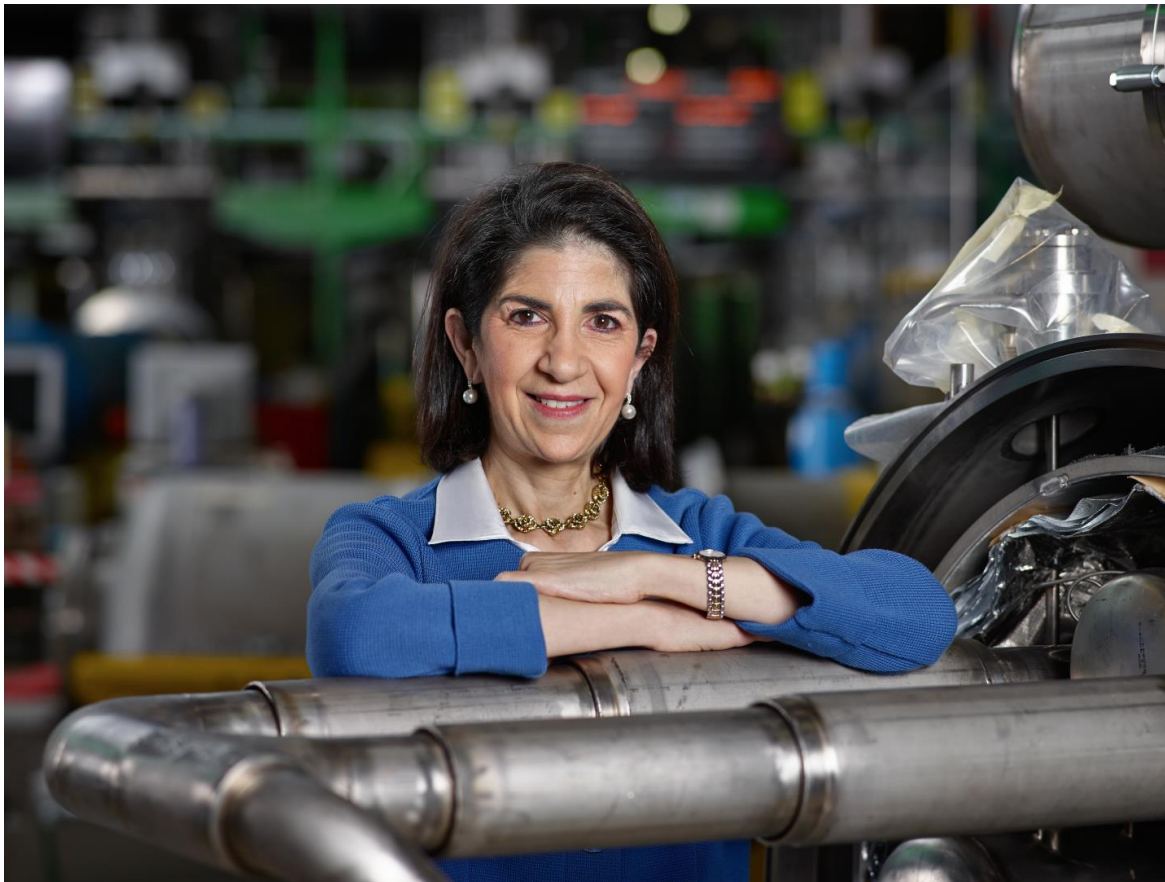
Fellows
> 800

Users
> 12 500

Associates
> 700

Students
> 700





[Link to biography](#)

© CERN Photo, 2015

Working at CERN when Nobel prize

- 1992 : Georges Charpak
- 1988 : Carlo Rubbia & Simon van der Meer
- 1984 : Jack Steinberger (with Lederman and Schwartz)

Working at CERN after Nobel prize

- 1952 : Felix Bloch
- 1976 : Sam Ting

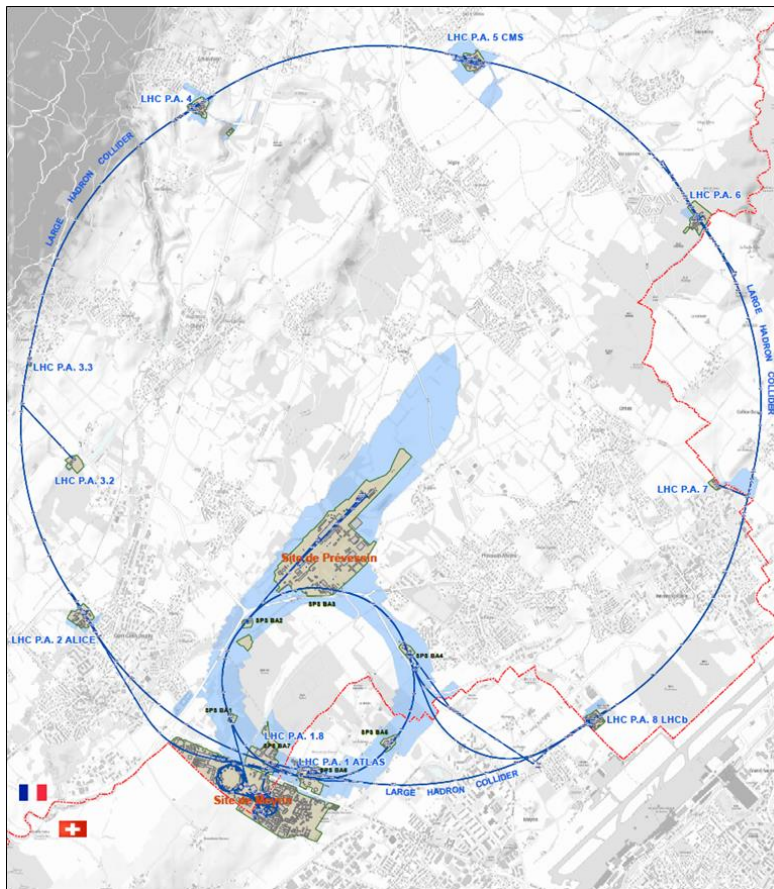
Nobel prize thanks to discoveries at CERN

- 2013 : Peter Higgs & Francois Englert

Quiz part 2

Daily life at CERN





625 ha

fenced : 220



515 ha

110 ha



... **700+** buildings
accounting for
500.000 m²



6 180 parking spots



30 km
roads



101 ha
green
spaces

Restaurants

2 in Meyrin (resto 1 & 2)

1 in Preveessin (resto 3)

Cafeteria (snacks)

Building 13, 30, 40, 54, ...



Meyrin, Restaurant 1



© CERN Photo

Preveessin, Restaurant 3

Meet new people during lunch!

<https://lunchcollider.ch/>



Welcome to LunchCollider

Have no plans for lunch or want to get to know somebody new?

Go for a lunch with a random person from CERN!

CERN Service Desk

 **Phone:** 77777 (+41 22 76 77777 from outside CERN)
By visiting: building 55 (entrance B)
 **Email:** service-desk@cern.ch



CERN Service Portal

Services

Service overview in a glance



Online forms

Report an incident, submit a request



Knowledge articles

Find your answer!



Feedback

Your feedback matters!



<https://cern.ch/service-portal>

Accident on site – different cases

In all cases

Inform **supervisor**

In case of

- Injury
- Environmental hazard
- Disruption traffic
- 3rd party involved

CERN Fire & Rescue 74444
(+ 41 22 767 44 44)

+

Internal accident report (EDH)

+

European Union Car Accident form

CERN Fire and Rescue Service

assisted by local **First Aiders**

Find out who
are closest to
your office / usual work places



© CERN Photo

First Aider door sticker



Your safety contacts : <http://safety.cern.ch/FirstAid.html>

CERN Mobility Centre

Located next to the Globe at end of parking

<https://smb-dep.web.cern.ch/en/Mobility>



CERN Mobility Centre

Located between the Globe and the Globe parking

Services offered

- ✓ Bike rental
- ✓ Car rental
- ✓ Car sharing



MOBILITY CENTER



Phone: + 41 22 767 2228

Email: mobility.service@cern.ch✉

Location: 6167

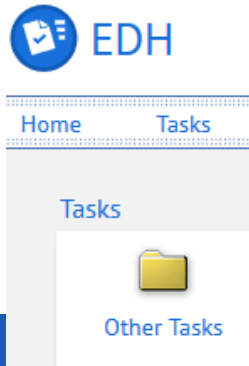
Open Monday to Friday from 8 a.m. to 12 p.m. and from 1 p.m. to 5 p.m.

CERN Car

Requires

CERN driving authorization :

- Valid driving licence
- OK Department Head



Private vehicle

- ✓ Not requiring registration
 - ✓ Bike, ...
 - ✓ Requiring registration
 - Registered in member state or EU country
 - “Tourist” cars only
- Not allowed :**
Scooter, moto, lorry, bus, ...



To see the shuttle timetable, please click on one of below circuits. 5 circuits are available:

1

Meyrin

2

Prévessin via FH Schuman

3

Shift ALICE / CMS / LHCb / COMPASS / NA61 / NA62

4

Meyrin - Airport - Meyrin

5

Prévessin

https://smb-dep.web.cern.ch/en/Mobility_Shuttle

<https://smb-dep.web.cern.ch/en/Mobility>

Mobility at CERN

TO SEE THE RECOMMENDED TRANSPORT OPTIONS, SELECT WHERE YOU WANT TO GO:

- Any -

- Any -

Airport/Aéroport

Official travel (outside the CERN perimeter)/Voyages officiels (hors périmètre CERN)

Shift work/Astreinte

Trips on or between CERN sites/Trajets sur ou entre sites du CERN

CERN Staff Association

- A. is one of the unions to defend your rights
- B. an association, only open for staff members
- C. oversees the CERN Clubs
- D. runs a Crèche and a School on the CERN site
- E. was the previous name of CERN Alumni

Several correct answers → Click **OK**



Staff Association

Defends all personnel
on a collective and on an individual basis

Become member : [Website](#)



Network of people who work(ed) at CERN





Become member : [Website](#)



© CERN Photo

Code of Conduct



Gates	Days				
Meyrin A	Mon-Fri	6-22		7-19	
Porte Jura Bldg 33		24/24			
Meyrin B (Main entrance)		24/24			
Meyrin C	Mon-Fri	6-22		7-19	
<i>Meyrin D (goods only)</i>	<i>Mon-Fri</i>				08-12 13-16
Meyrin E	Mon-Fri	In : 7-9.30 Out : 16.30-20			
<i>Intersites tunnel (restrictions)</i>	<i>Mon-Fri</i>			7-18	
Prevessin Main entrance		24/24			
Prevessin Route du Maroc		24/24			
Prevessin Moulin des Ponts		24/24			

CERN access card

Visitors badge

Validity :
2 working days

CERN access card

Building 55

Working days

from 7:30 to 17:30, non stop

Also

- vehicle registration
- biometrics registration



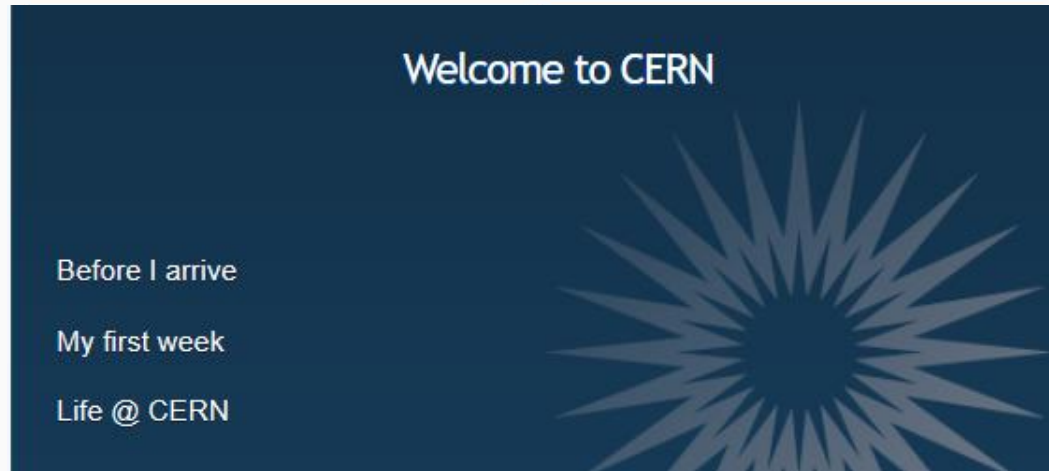
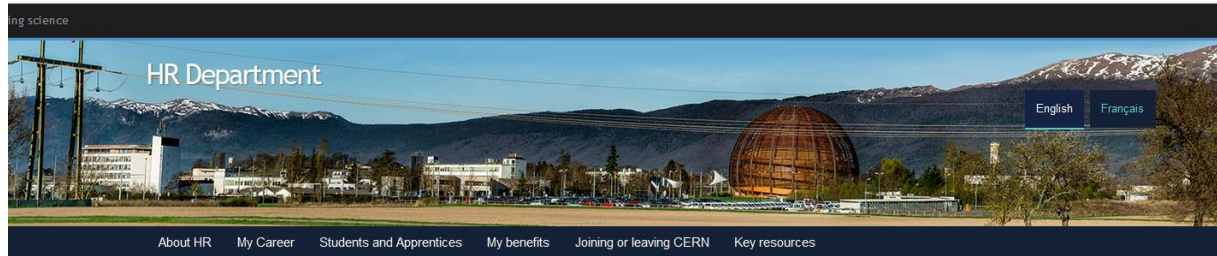
First week - optional

- Register vehicles to enter site
- Register personal devices on CERN network
- Download employment attestation HRT

- Staff & Fellows who are married/partnership : complete SHIPID (EDH)

Newcomers website

<https://hr-dep.web.cern.ch/>



Recap from quiz - recommended

- Download **CERN map** on your smartphone
- Enter full number **Fire and rescue** service in your phone
- Find out who are closest **first-aiders**



+ 41 22 76 74444



Onboarding continues with ...

On invitation

- **Induction sessions** by contract type
- **Quarterly session** : 8 April 2020
For staff, fellows, doctoral students and users
- **Spouse Welcome** : 24 March 2020
For staff, fellows and doctoral students

Voluntary registration

- **Guided CERN tour**
every month, English or French
open for your family

Before joining your Department

Unit

Directorate Services



Health, Safety and Environment

Sector

Accelerator and Technology

Finance and Human Resources

International Relations

Research and Computing

Department

Beams

Finance and Administrative Processes

Experimental Physics

Technology

Industry, Procurement and Knowledge Transfer

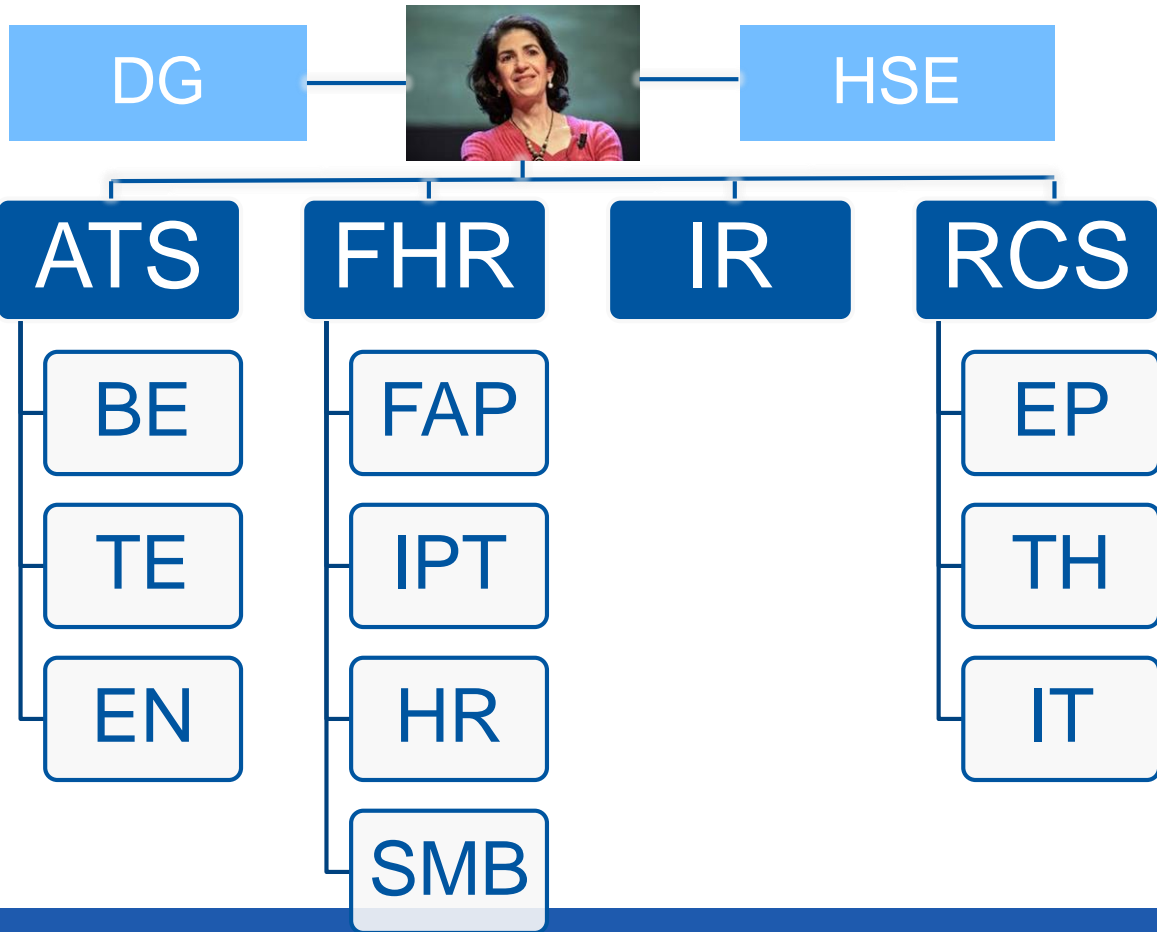
Theoretical Physics

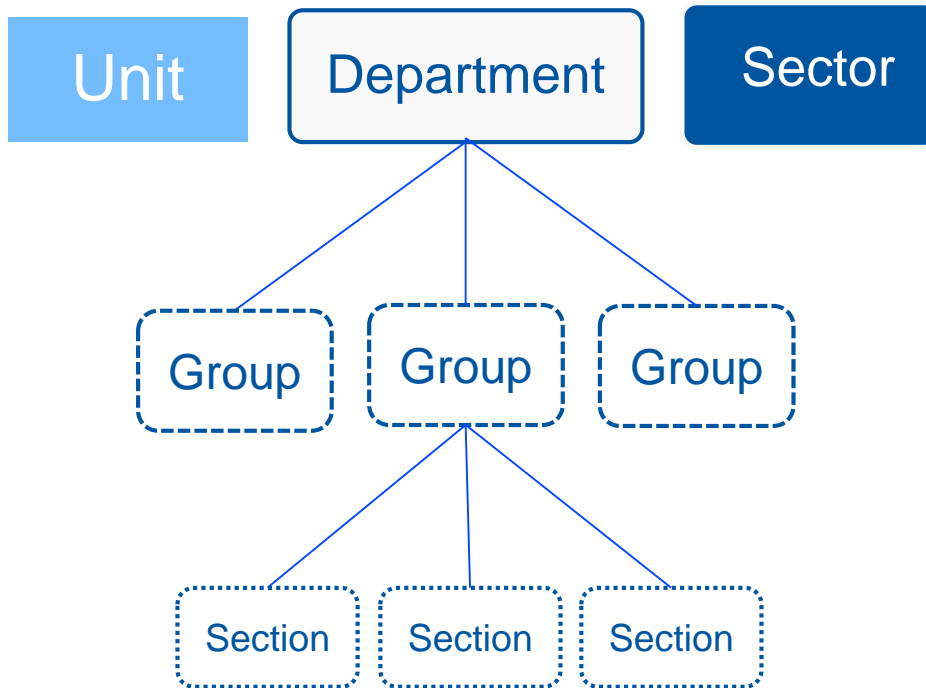
Engineering

Human Resources

Information Technology

Site Management and Buildings





Time to join your Department !

1. Go to the flag of your Department.
Introduce yourself to your colleagues
Instructions and map where to go

BEAMS department



2. Challenge : Organise yourself
as a group so everyone gets there
in time

All other
departments



A pragmatic example...

Newcomers working for TE

- Find out who else will be working in your group!
- Find the building you have to go to **on the map**
- Find the way of transport

