

# Report: #23

## Activity: PS complex

*Jose A. Ferreira*

*2<sup>nd</sup> March 2020*



**LS2**



# Performed activities during last 4 weeks

## ➤ LINAC4

- Pumpdown of stripping foils

## ➤ AD&ELENA

- Pumpdown LNE05 for activation test

## ➤ PSB

- BT10 and BT20 pumpdown and leak test
- BT.SMV10 and BT.SMV20 bakeout
- BR10 and BR30 pumpdown and leak test
- Repair of BHZ112 and BHZ152
- VacSeal on BHZ151 after heating
- Installation of SEMgrids
- Installation of stripping foils in 1L1

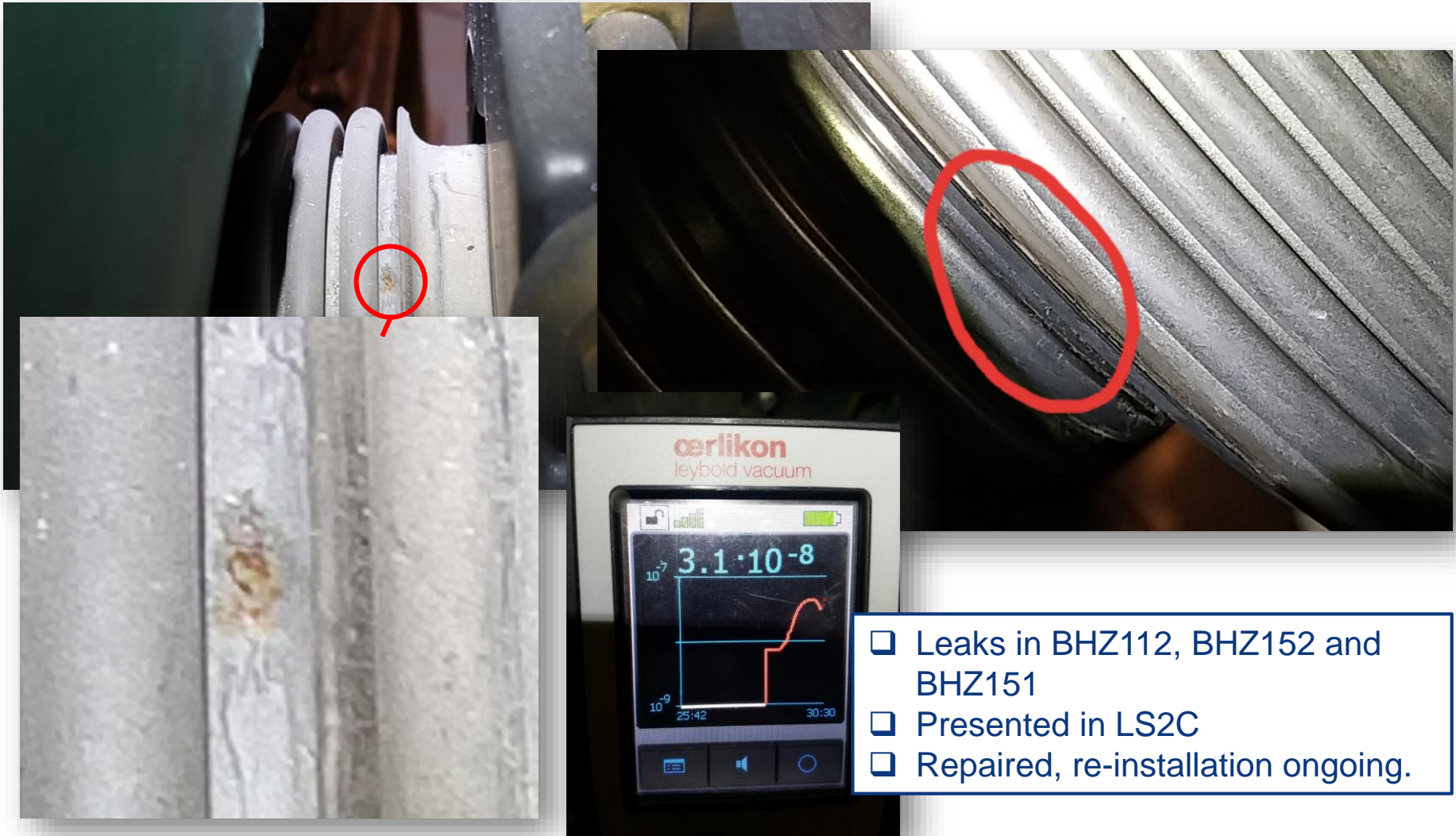
## ➤ ISOLDE

- Installation of full range gauges in experimental areas





# Technical issues and difficulties

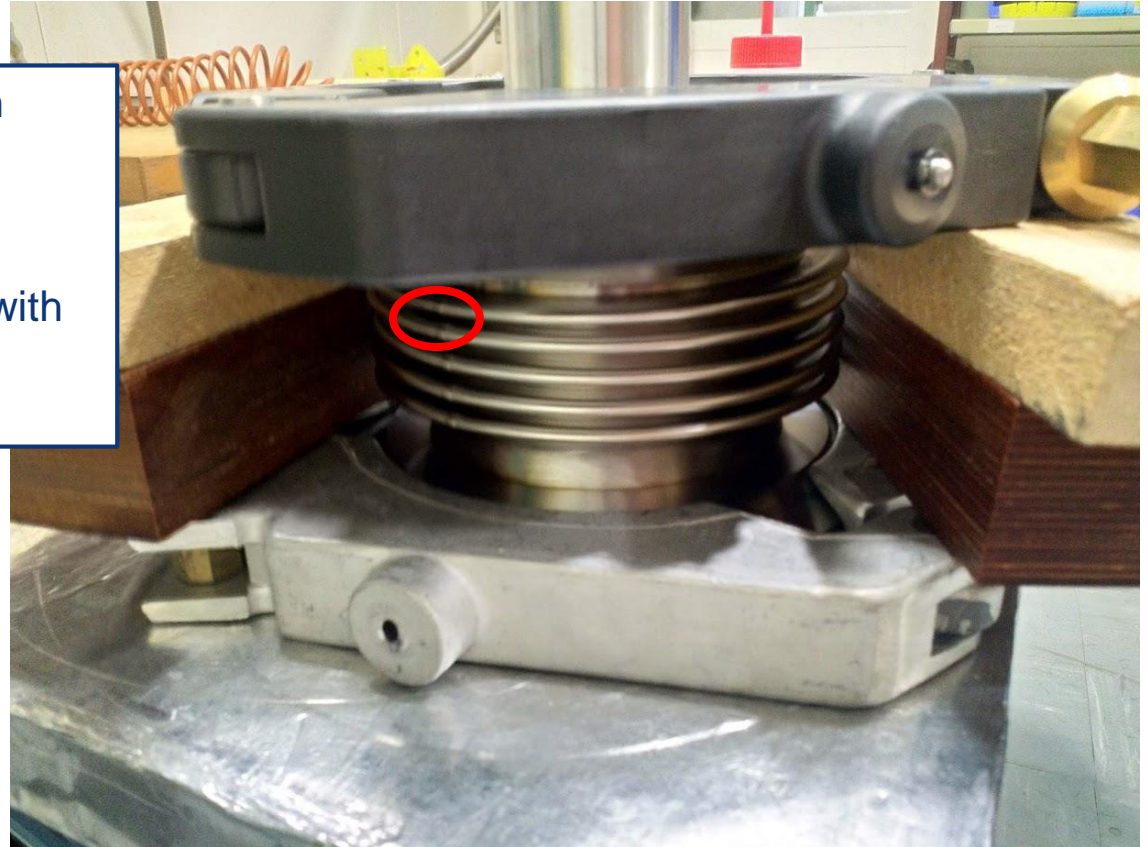


- Leaks in BHZ112, BHZ152 and BHZ151
- Presented in LS2C
- Repaired, re-installation ongoing.



# Technical issues and difficulties

- Two bellows from same batch failed after pumpdown
- Both in same positions
- Deeper analysis ongoing
- Several chambers produced with them!
- Spares available



# Planned activities for next 2 weeks

- **AD&ELENA:**
  - Magnet consolidation
  - Finish FINEMET assembly
  - Continue test LNE05
- **LINAC4**
  - Close RFQ in LINAC4 ?
- **PSB:**
  - Leak detections BR10, BR30 after BHZ repair
  - Bakeout BE.SMH
  - Alignment BTM
- **PS:**
  - Repair and leak test LBS
  - Bakeout PR30
  - Close PR60
  - Close PR90
  - Start closing TT2
  - Installation of chamber inside Q74
  - Close PR80
- **ISOLDE:**
  - Replacement of elastomer seals of FE in bat. 179
  - Installation of FrontEnd10?
- **nTOF**
  - Preparation of sweeping magnet chamber installation

# Resources distribution

- ❑ Russian team :
  - ❑ PSB ring and PS ring.
- ❑ Paul and Guillermo: Coordination of PS and PSB works, preparation of interventions. Pumping group consolidation
- ❑ Alex: AD& ELENA
- ❑ Alice and Nico: Lab and LINACs
  - ❑ Leak test LBS
  - ❑ Acceptance test
- ❑ Claude: ISOLDE and nTOF
  - ❑ FrontEnd leak detection
  - ❑ Installation of full range gauges

# Dashboard and work evolution

Fri 08-06-18 - Wed 10-03-21

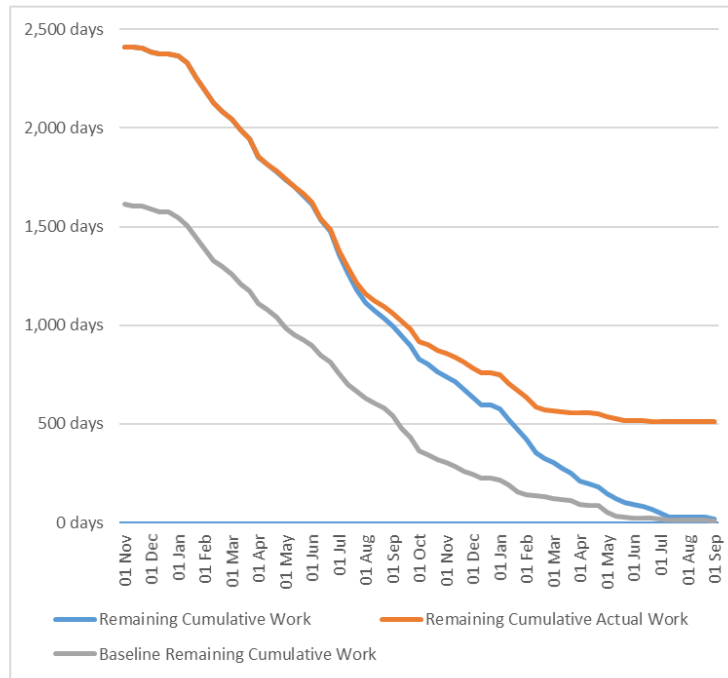
## BURNDOWN

% Complete

76%

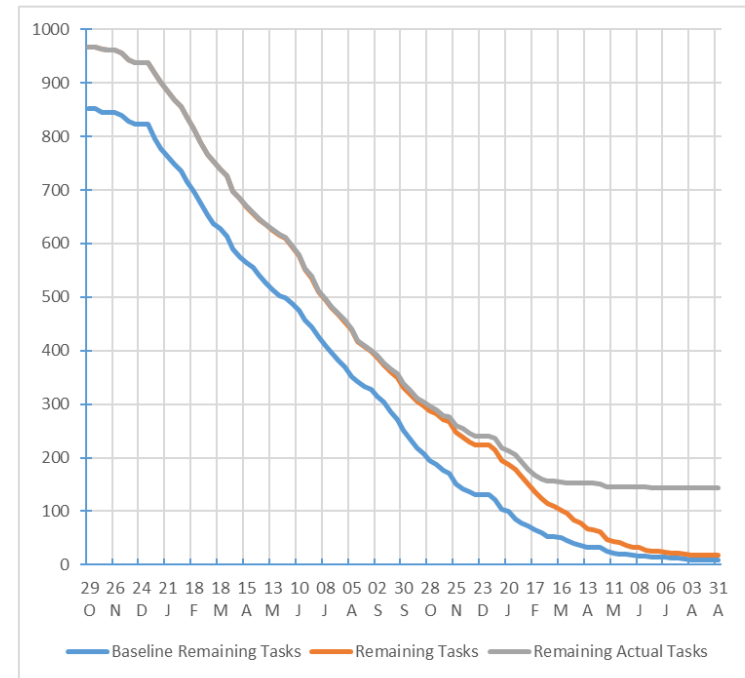
Remaining Work

511.77 days



### WORK BURNDOWN

Shows how much work you have completed and how much you have left. If the remaining cumulative work line is steeper, then the project may be late. Is your baseline zero?



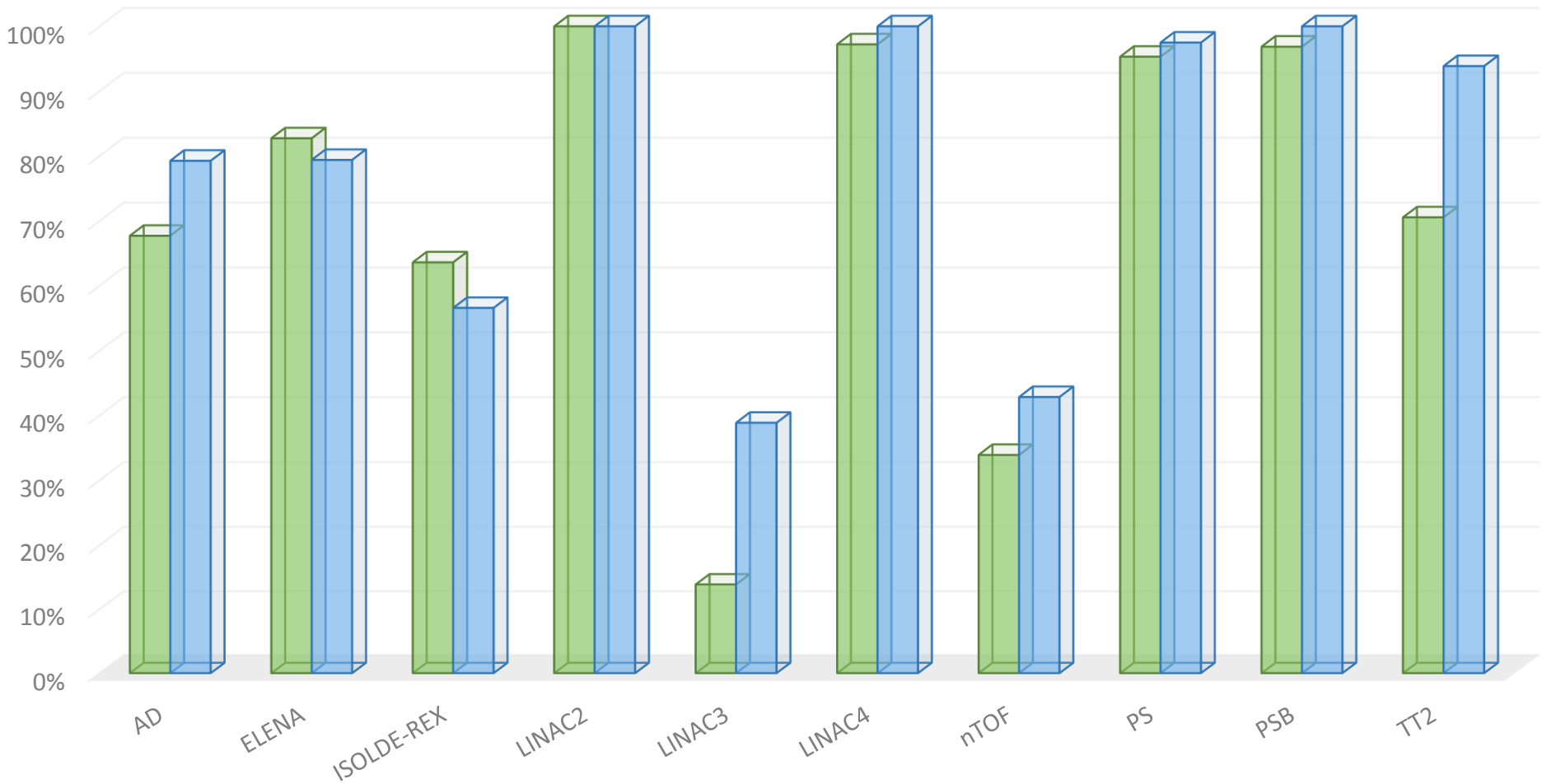
### TASK BURNDOWN

Shows how many tasks you have completed and how many you have left. If the remaining tasks line is steeper, then your project may be late.



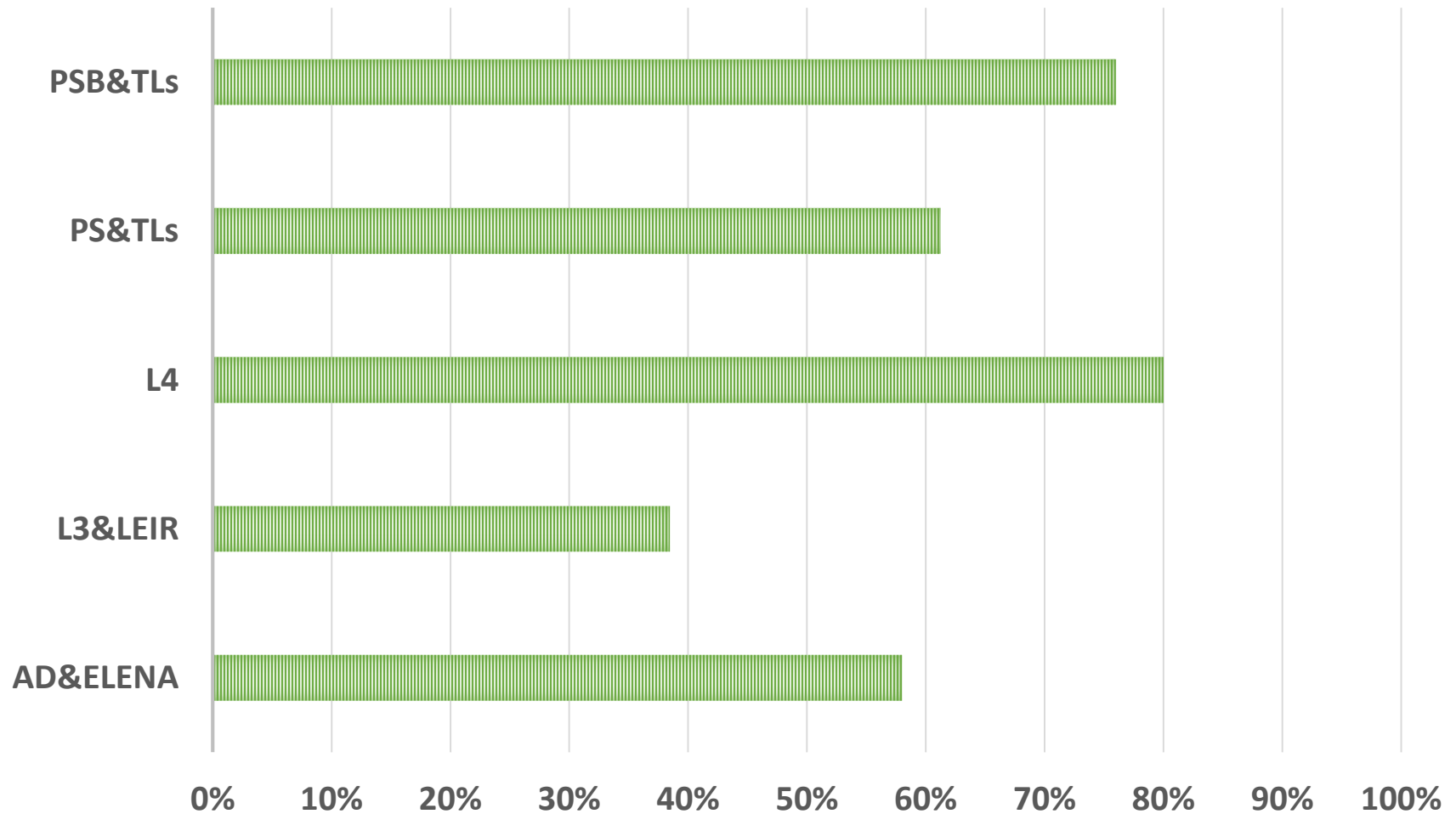
# Dashboard by Machine (March)

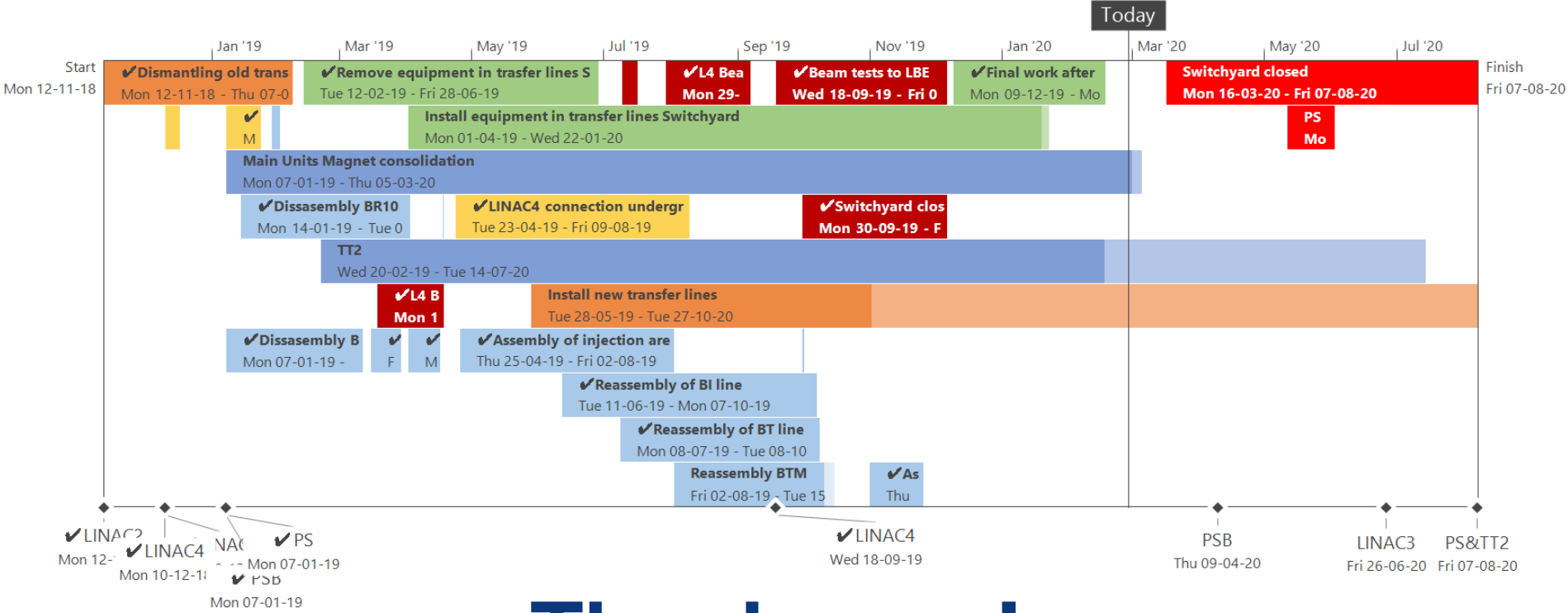
% Completed % Baseline



# Sectors under vacuum

SECTORS UNDER VACUUM





# Thank you !



# LS2

