



SU7000

Sample run on Large Cu Metal block sample
on Hitachi High Performance UHR VP FE-SEM **SU7000**
for STFC



December 2019
Yukari Dan
Hitachi High-Technologies Europe GmbH, UK

Results

Large Cu Metal Block

- Observation Condition

Accelerating Voltage : 30 kV

Signal : SE(UD,LD), PDBSE(COMPO,TOPO)

Magnification : 800x

- EDX analysis Condition

Accelerating Voltage : 30 kV (SU7000 + OXFORD Ultimex170)

6 kV (Regulus FE-SEM + Bruker FQ)

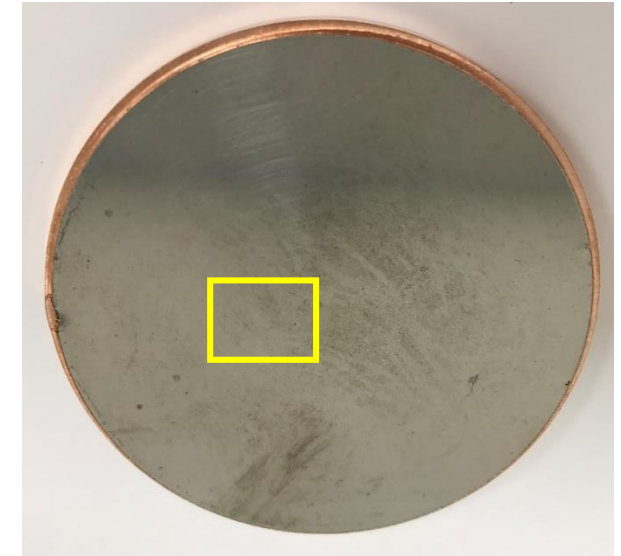
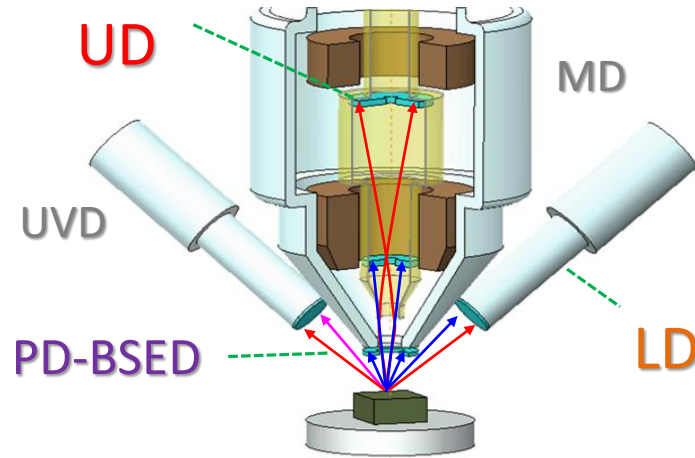
Signal : PDBSE(COMPO)



Large Cu Metal Block

Accelerating Voltage : 15 kV

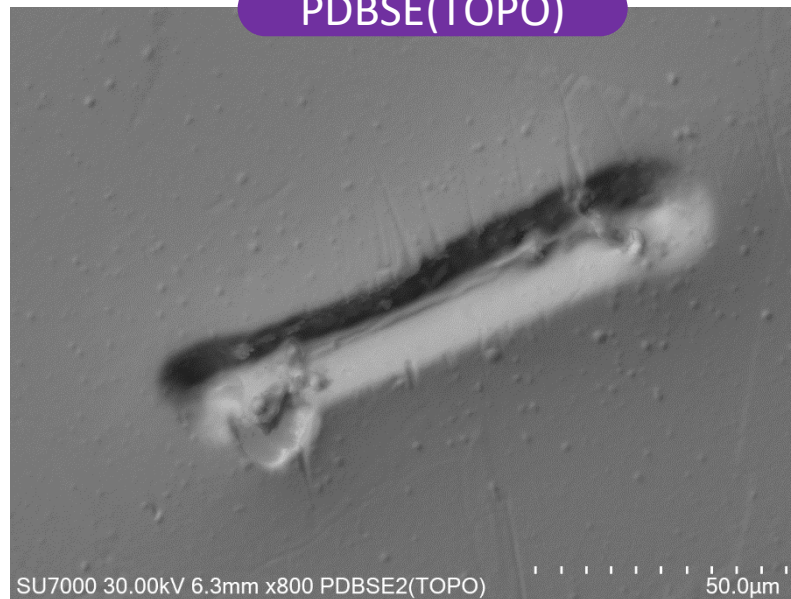
SE(UD)



PDBSE(COMPO)



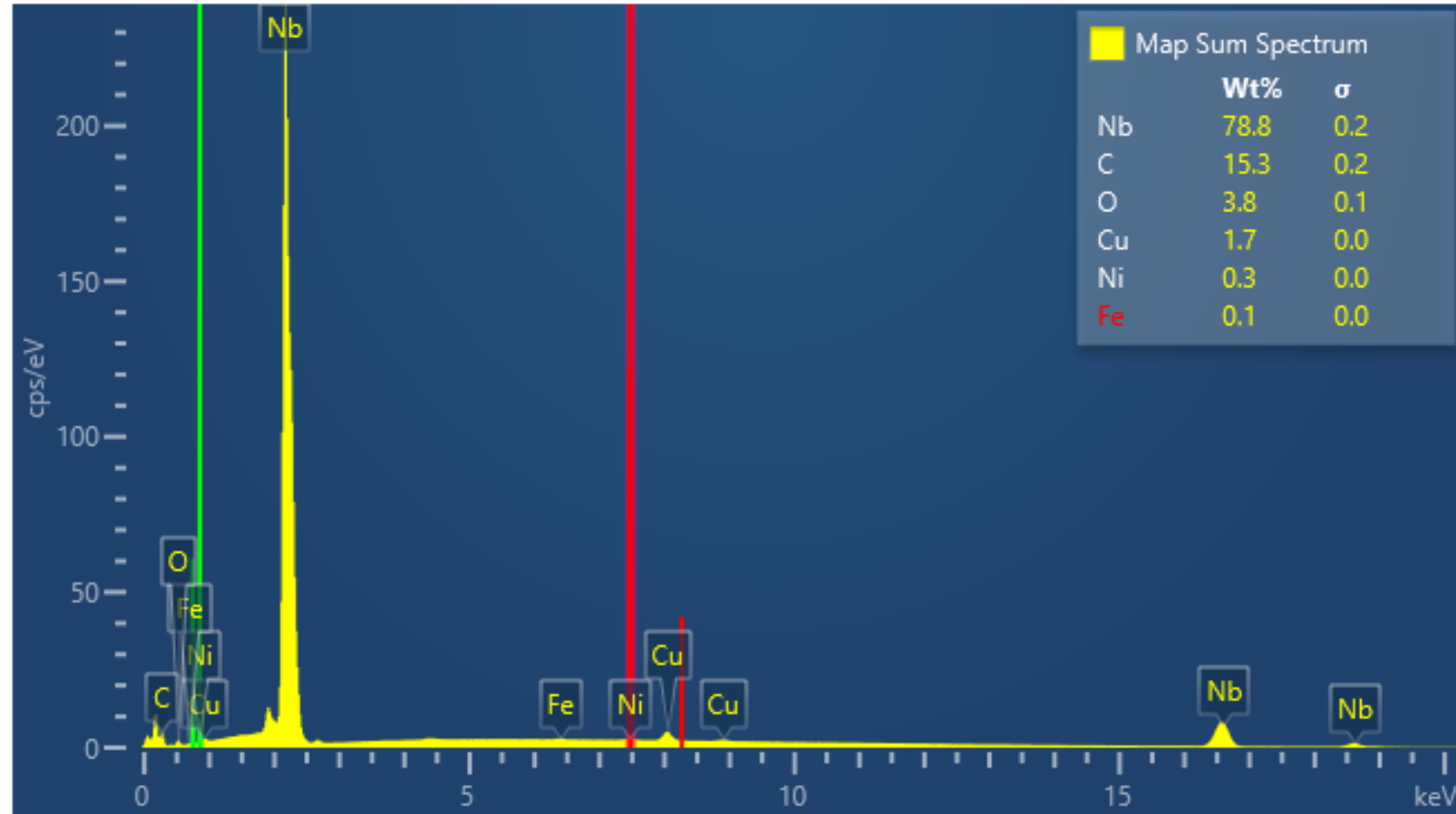
PDBSE(TOPO)



SE(LD)



Electron Image 23



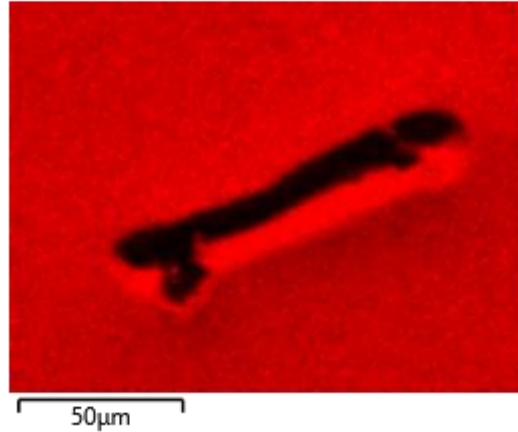
Large Cu Metal Block

OXFORD EDX Mapping area13 30 kV

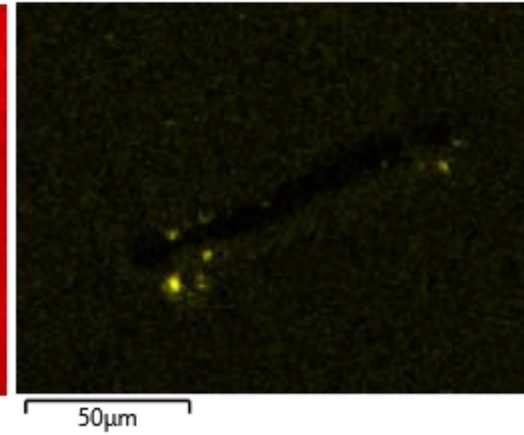
Electron Image 23



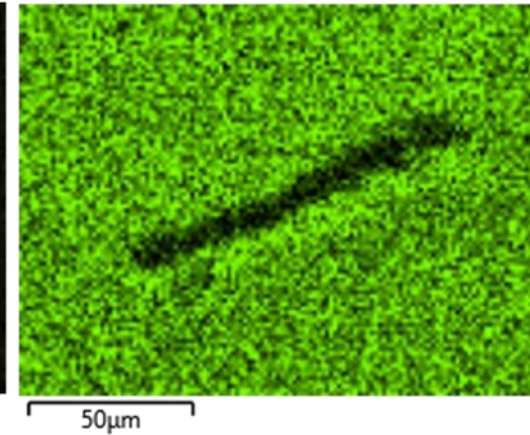
Nb Lα1



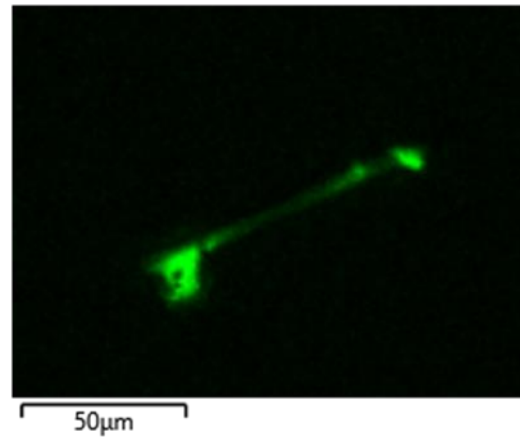
Fe Kα1



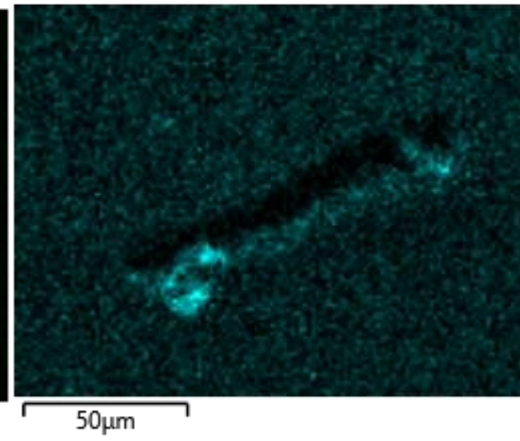
Ni Kα1



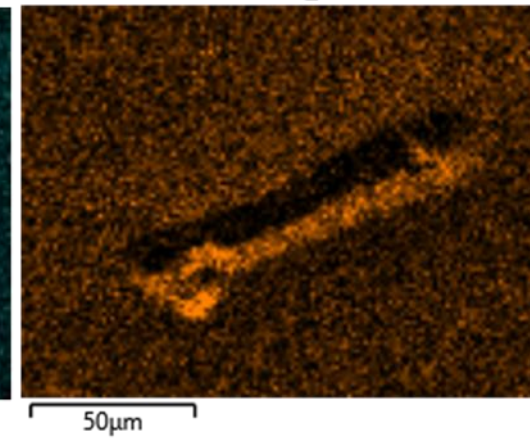
Cu Kα1



O Kα1

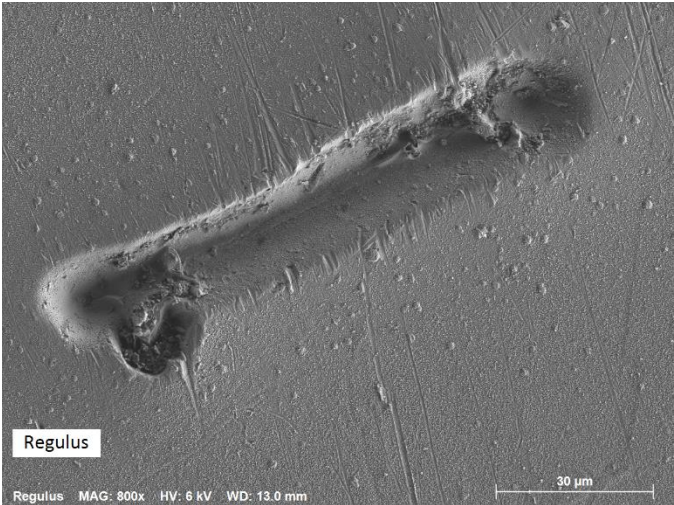
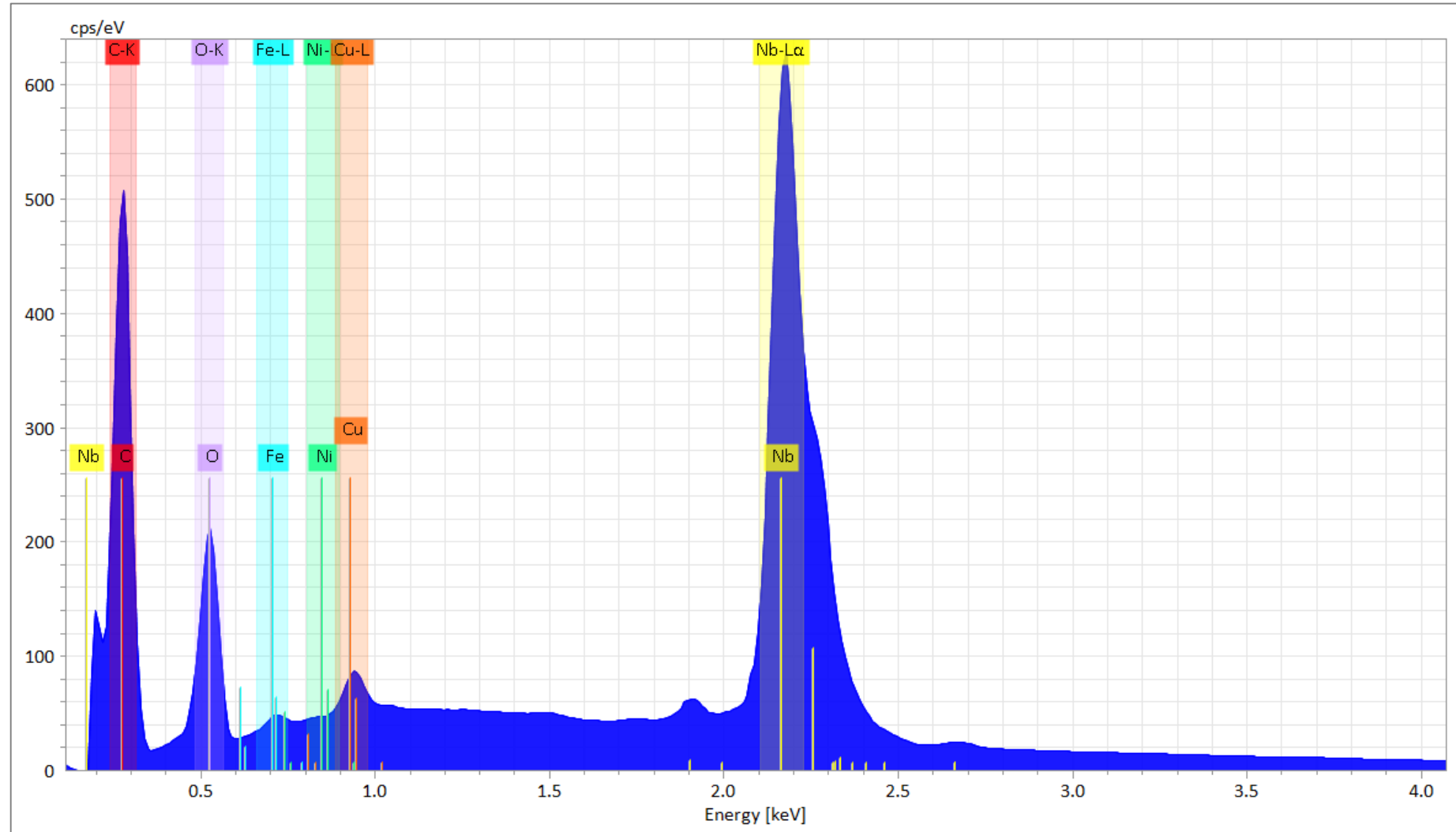


C Kα1_2



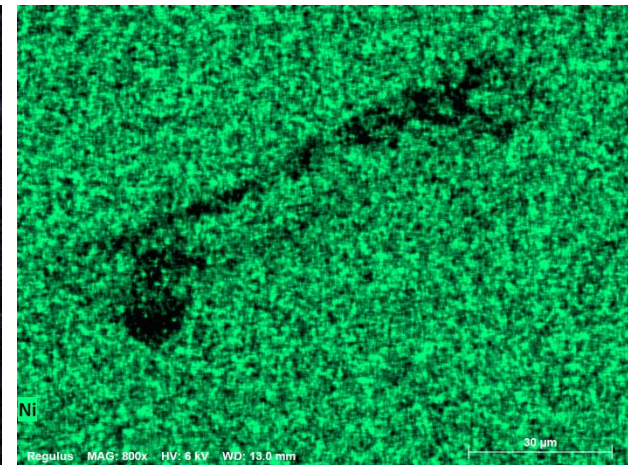
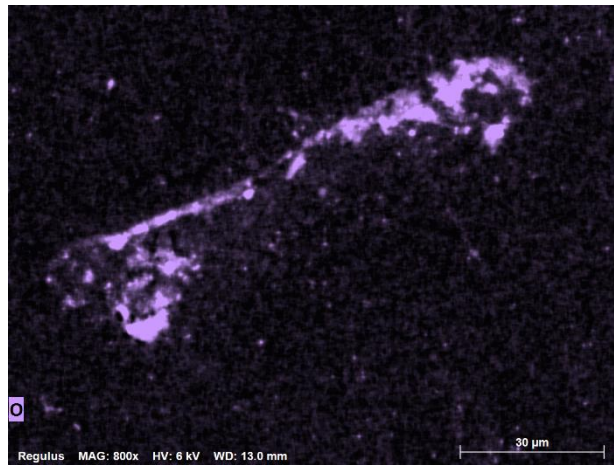
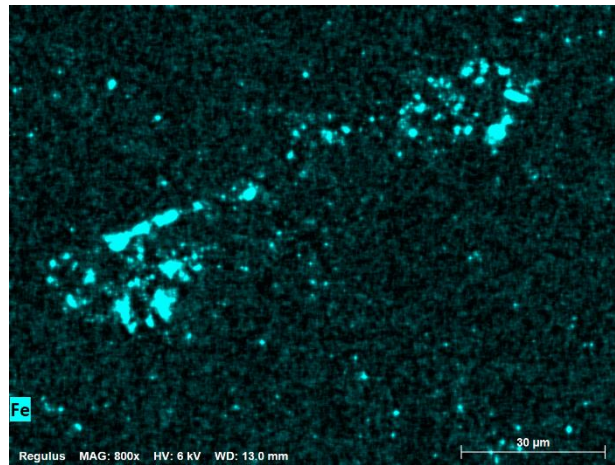
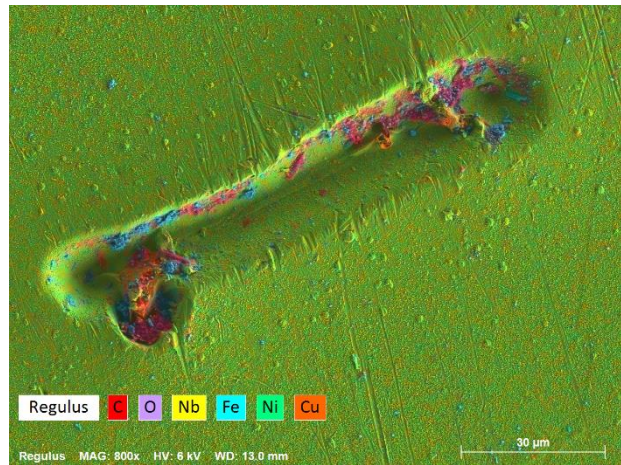
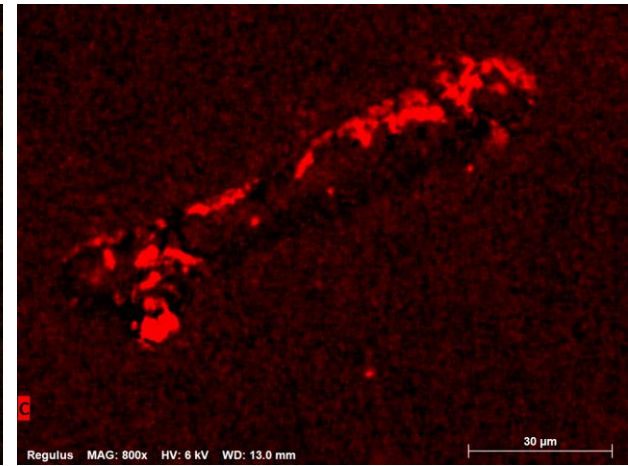
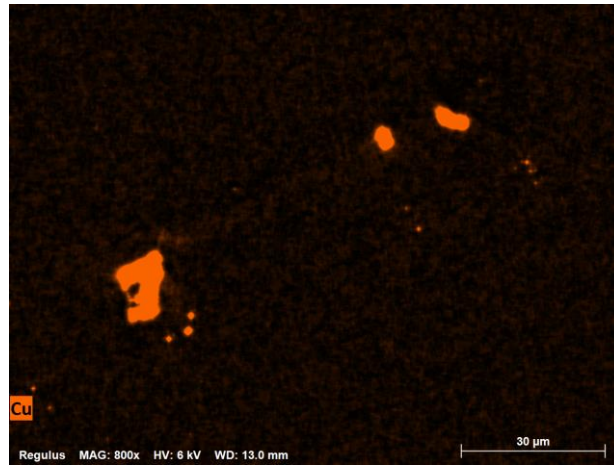
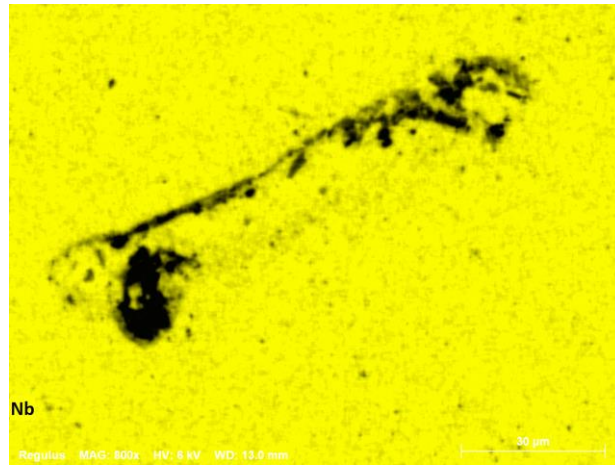
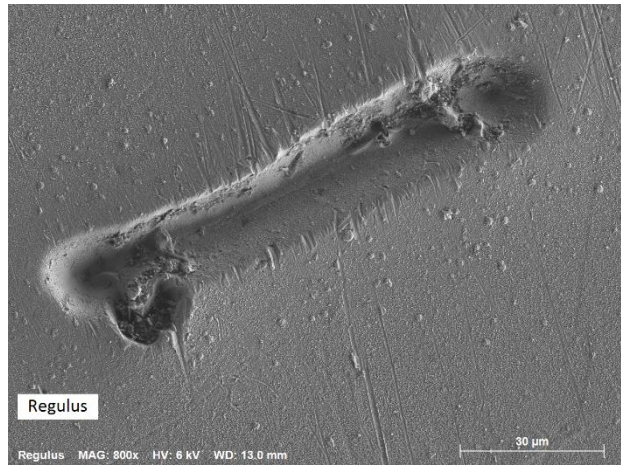
Large Cu Metal Block

Bruker FQ EDX Mapping spectrum 6 kV



Large Cu Metal Block

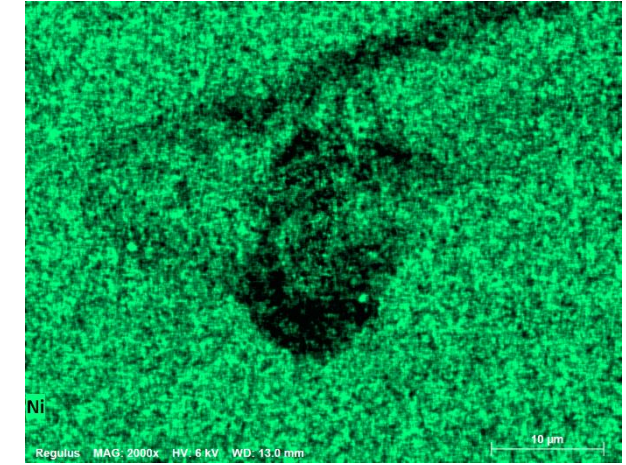
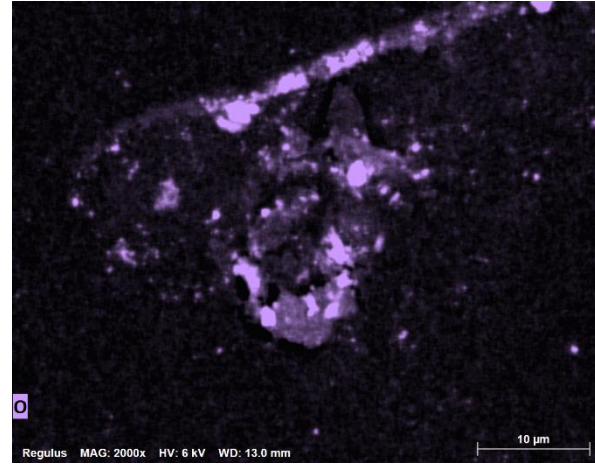
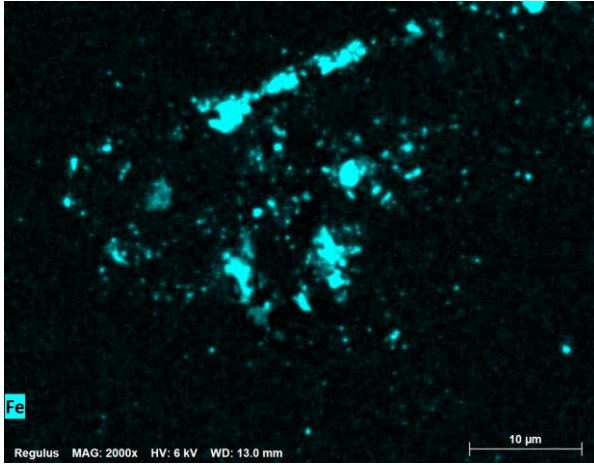
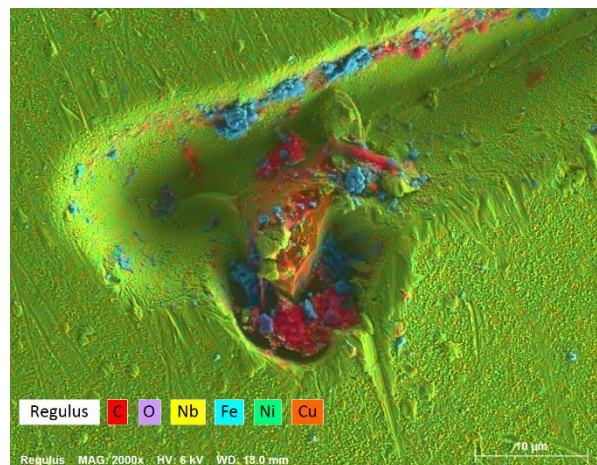
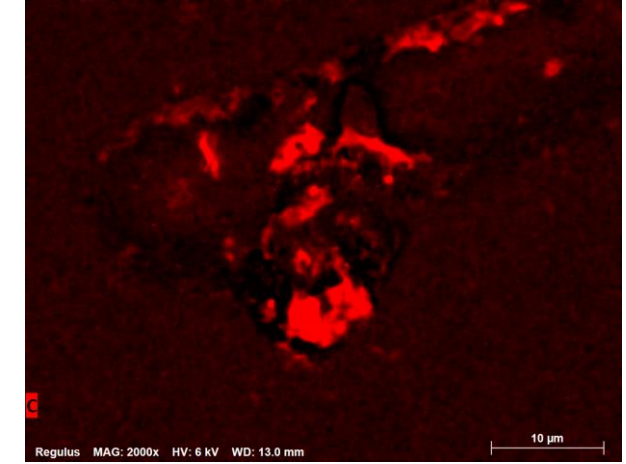
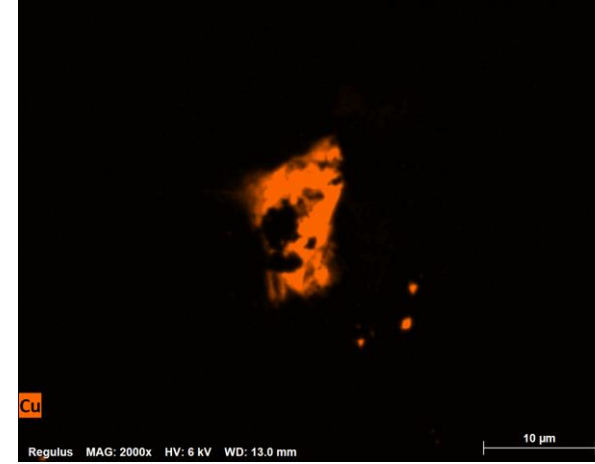
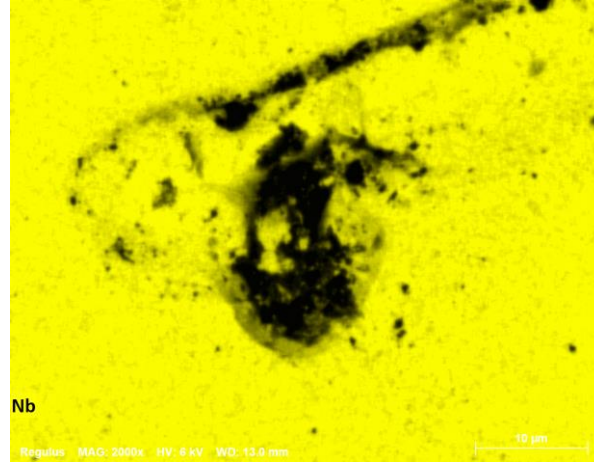
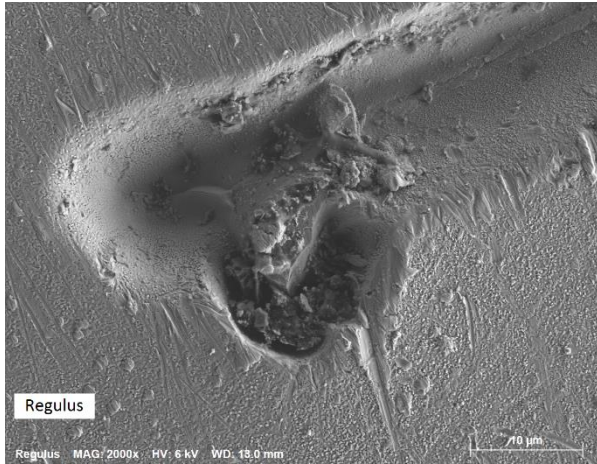
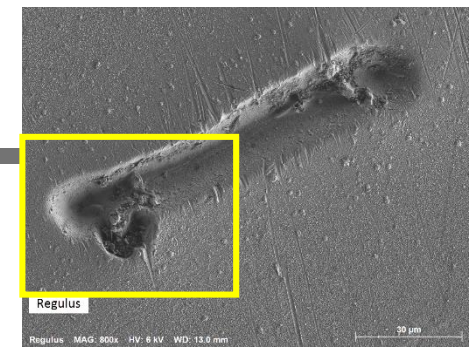
Bruker FQ EDX Mapping 6 kV



Large Cu Metal Block

Bruker FQ EDX Mapping 6 kV

HITACHI
Inspire the Next





SU7000

Demo report

End

December 2019

Yukari Dan

Hitachi High-Technologies Europe GmbH, UK

